

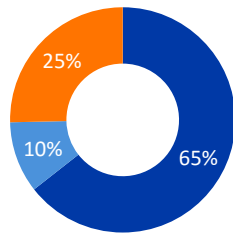


**461,664** Individuals  
**73,467** Households



**931** Locations assessed  
**+68** additional villages assessed

### Displacement overview



**297,380** Internally Displaced Persons

**116,979** Returnees

**47,305** Out-of-camp Refugees



**50.7%** Male  
**49.3%** Female

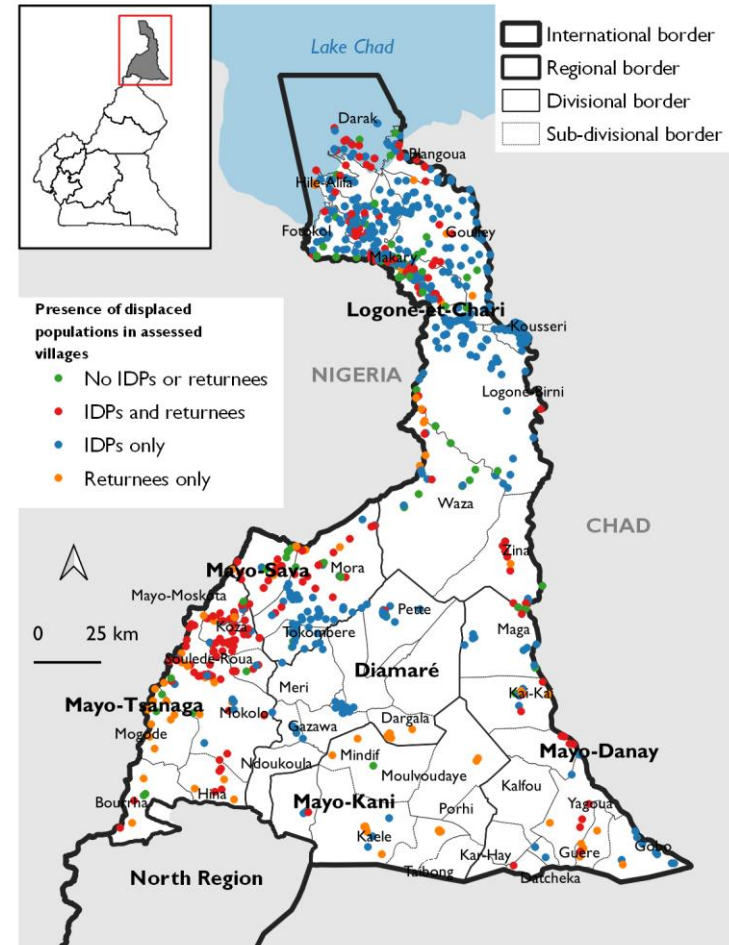


**64%** Minors



**7.8** Average Household Size

### Location of assessed villages

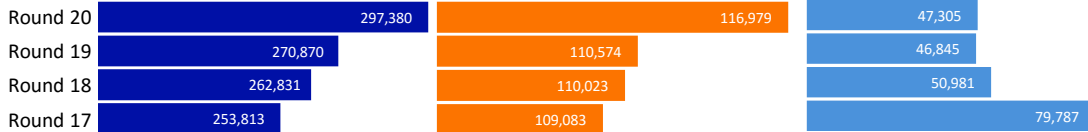


### Number of displaced populations over the last four rounds

#### Internally Displaced Persons

#### Returnees

#### Out-of-camp Refugees

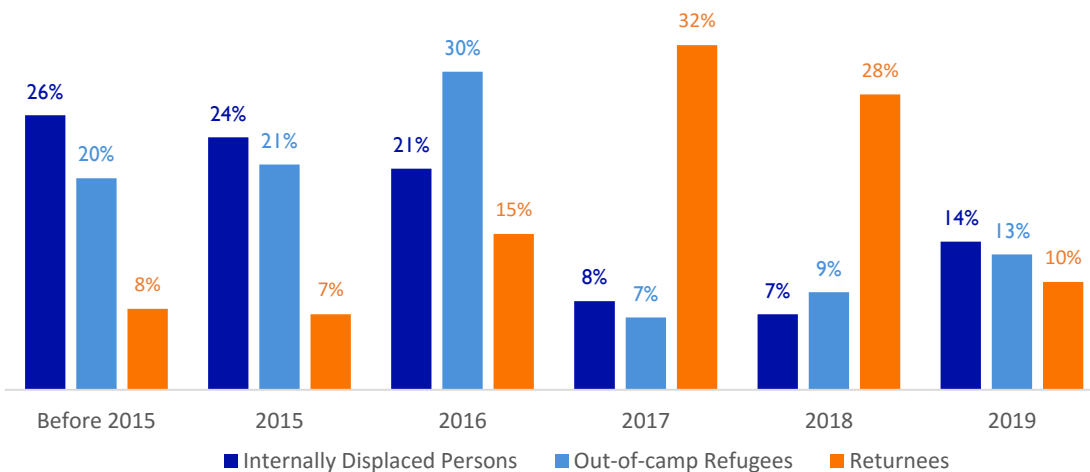


**+10%** since Round 19 (August 2019)

**+6%** since Round 19 (August 2019)

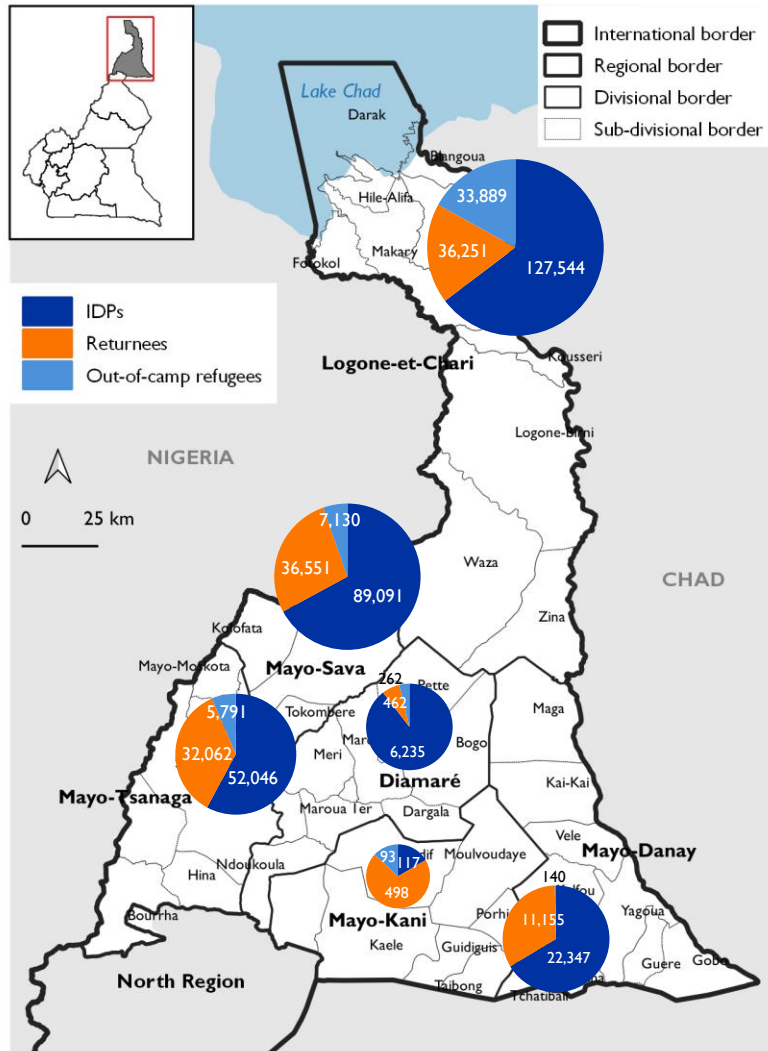
**+1%** since Round 19 (August 2019)

### Number of displacements by population category and period of displacement



*This map is for illustrative purposes only. Representations and the use of boundaries and geographical names on this map do not imply official recognition or acceptance by IOM.*

### Distribution of displaced populations by divisions



This map is for illustrative purposes only. Representations and the use of boundaries and geographical names on this map do not imply official recognition or acceptance by IOM.

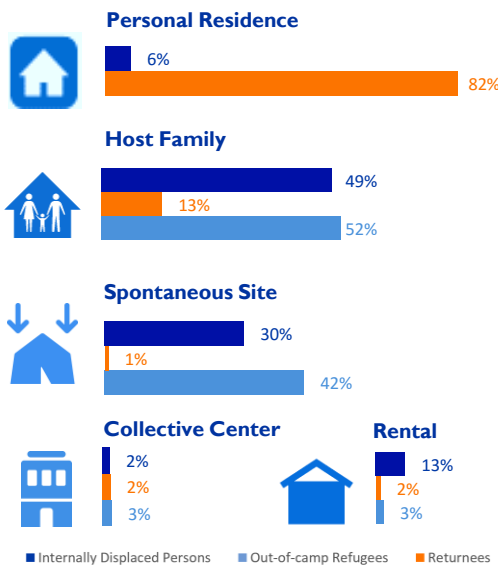
### Reasons for displacement



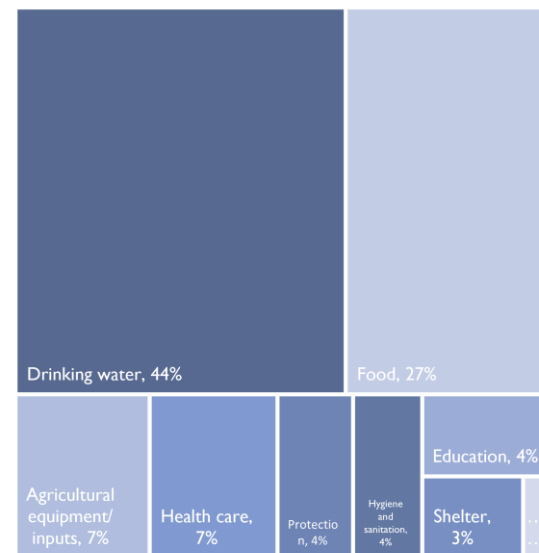
### Reasons for return



### Shelter types



### Priority needs of displaced populations



Refers to the most pressing needs of displaced persons as reported by key informants