



METHODOLOGY : Data are collected through key informants in departure and host locations by phone and by physical observations

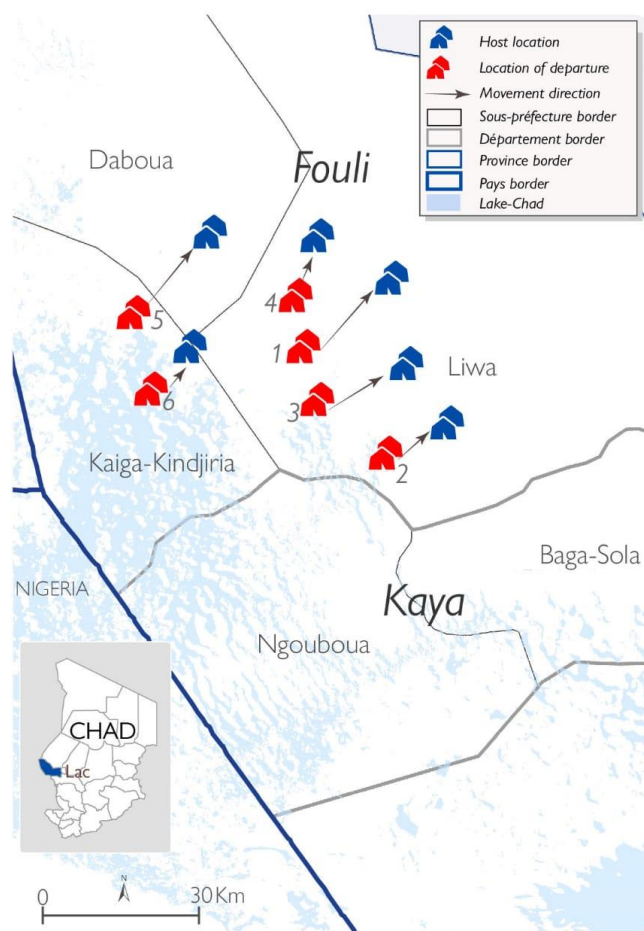


1,168 Displaced Households
4,550 Displaced Individuals

6 Movements

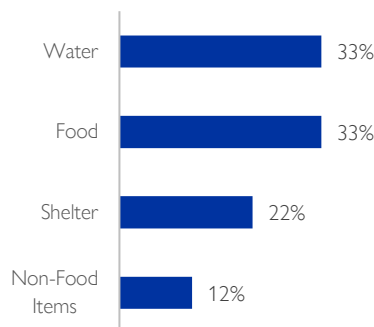
The objective of the Emergency Tracking Tool (ETT) is to collect information on large and sudden population movements as well as on security and climate emergencies. This dashboard provides information on movements which occurred on **14, 22, 27 July, 05, 08 and 09 August 2023** in six sites in Lake Province.

- Following the kidnappings of individuals in the villages of Kolina and Dla (situated in Liwa sous-préfecture, Fouli department), two movements occurred in Liwa sous-préfecture: first, **298 households (1,250 individuals)** of local communities, preventively left the locality of Kolina to seek refuge in **Djigou 2 site** (point 1 on the map). Then, a total of **420 households (1,750 individuals)** of local communities, preventively left the village of Dla and took refuge on 22 July 2023 in **Héra site** (point 2 on the map).
- Following armed attacks perpetrated by non-state armed groups on **22 July, 01, 06 and 07 August 2023** in the villages of Tchoukou Tchella, Kirna Tchoulouma (sous-préfecture of Liwa), Djilom and Tambou (sous-préfecture of Kaiga-Kindjiria), several movements occurred:
 - 20 households (85 individuals)** of local communities, left the village of Tchoukou Tchella and took refuge on 27 July 2023 in the **Koubourom site** (situated in the same sous-préfecture) (point 3 on the map).
 - 120 households (485 individuals)** of IDPs, left the village of Kirna-Tchoulouma (sous-préfecture of Liwa) and sought refuge on 05 August 2023 in the **site of Filla** (same sous-préfecture) (point 4 on the map).
 - 40 households (180 individuals)** of local communities, left the locality of Djilom (Kaiga-Kindjiria sous-préfecture) to take refuge on 08 August 2023 in the **site of Toukoul 1** (sous-préfecture of Daboua) (point 5 on the map).
 - 270 households (800 individuals)** of local communities, left the village of Tambou (Kaiga-Kindjiria sous-préfecture) and sought refuge on 08 August 2023 in the **Bouta Kadi site**, situated in the same sous-préfecture (point 6 on the map).

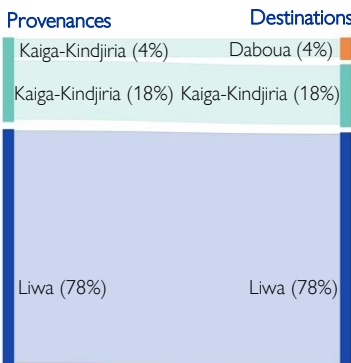


This map is for illustration purposes only. The depiction and use of boundaries, geographic names and related data shown on maps and included in this report are not warranted to be error free nor do they imply judgment on the legal status of any territory, or any endorsement or acceptance of such boundaries by IOM.

PRIORITY NEEDS



DEPARTURE AND HOST SOUS-PRÉFECTURES



DISPLACEMENT INFORMATION

#	Arrival date of the host location	Displaced population	Departure location	Population category	Host sous-préfecture	Host location	Reason for movement	Means of transportation	Priority needs		
									Shelter	Food	Water
1	14/07/2023	298 households, 1,250 individuals	Kolina (Liwa)	IDPs	Liwa	Djigou 2	Preventive displacement after kidnapping	By foot and riding animals	Shelter	Food	Water
2	22/07/2023	420 households, 1,750 individuals	Dla (Liwa)	IDPs	Liwa	Héra	Preventive displacement after kidnapping	By foot and riding animals	Non-Food Items (NFI)	Food	Water
3	27/07/2023	20 households, 85 individuals	Tchoukou Tchella (Liwa)	IDPs	Liwa	Koubourom	Displacement due to armed attack	By foot and riding animals	Water	Food	Shelter
4	05/08/2023	120 households, 485 individuals	Kirna-Tchoulouma (Liwa)	IDPs	Liwa	Filla	Displacement due to armed attack	By foot and riding animals	Non-Food Items (NFI)	Food	Water
5	08/08/2023	40 households, 180 individuals	Djilom (Kaiga-Kindjiria)	IDPs	Daboua	Toukoul 1	Displacement due to armed attack	By foot and riding animals	Eau	Vivres	Abris
6	09/08/2023	270 households, 800 individuals	Tambou (Kaiga-Kindjiria)	IDPs	Kaiga-Kindjiria	Bouta kadi	Displacement due to armed attack	By foot and riding animals	Eau	Vivres	Abris