



METHODOLOGY : Data are collected through key informants in departure and host locations by phone and by physical observations

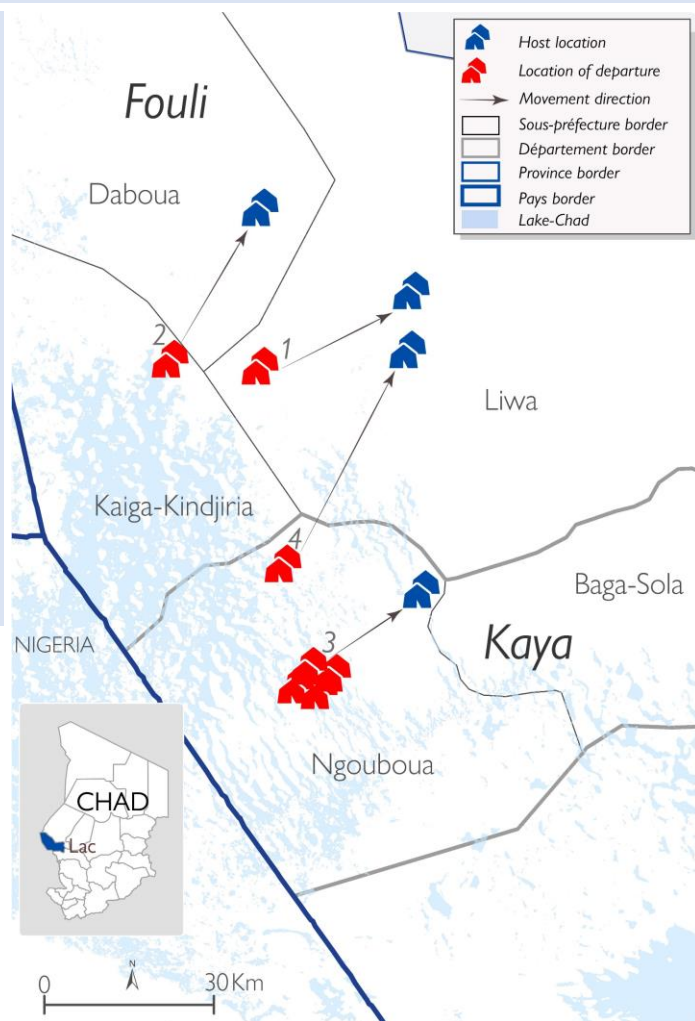


1,059 Displaced Households
6,390 Displaced Individuals

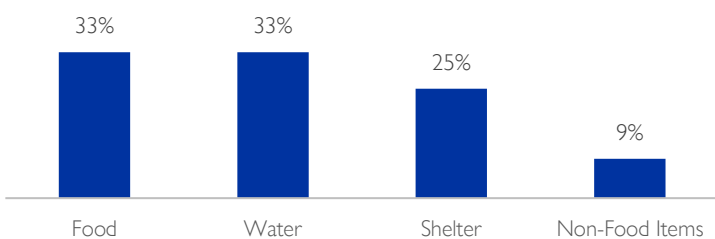
4 Movements

The objective of the Emergency Tracking Tool (ETT) is to collect information on large and sudden population movements as well as on security and climate emergencies. This dashboard provides information on movements which occurred on **02, 03 and 08 May 2023** in four sites in Lake Province.

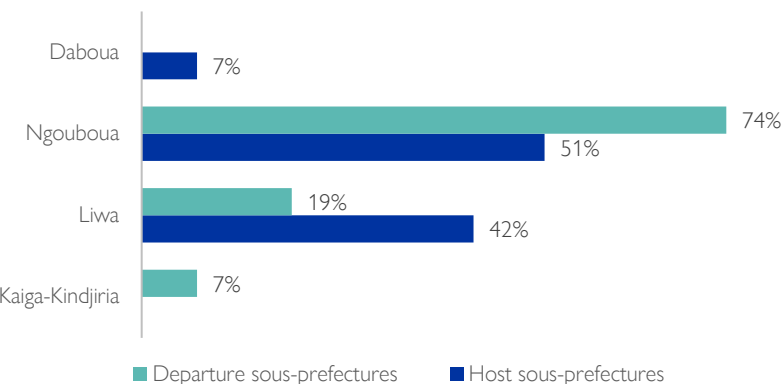
- Following armed attacks perpetrated by non-state armed groups on 25 April and 06 May 2023 in Tchoukou-Kapi (sub-prefecture of Ngouboua, department of Kaya) and Tchoukou-Martheye (sub-prefecture of Liwa, department of Fouli) sites, two movements occurred: first, **229 households (1,200 individuals)** left the site of Tchoukou-Martheye and took refuge on 02 May 2023 in Bouradjaram site (situated in the same sub-prefecture) (*point 1 on the map*). Then, a total of **350 households (1,500 individuals)** left Tchoukou-Kapi site (sub-prefecture of Ngouboua) and sought refuge on 8 May 2023 in Nguilourou site (situated in the sub-prefecture of Liwa) (*point 4 on the map*).
- Following threats from non-state armed groups in the villages of Kabirom Kanlli, Kabirom Koura and Klakamia (situated in Ngouboua sub-prefecture), **360 households (3,240 individuals)** preventively left these localities to settle in the newly established site of Wawillom (same sub-prefecture) (*point 3 on the map*).
- After a theft of livestock in Konguyo (sub-prefecture of Kaiga-Kindjiria), **120 households (450 individuals)** left this locality preventively and took refuge on 3 May 2023 in Guidallom site in Daboua sub-prefecture (*point 2 on the map*).



PRIORITY NEEDS



DEPARTURE AND HOST SOUS-PREFECTURES



This map is for illustration purposes only. The depiction and use of boundaries, geographic names and related data shown on maps and included in this report are not warranted to be error free nor do they imply judgment on the legal status of any territory, or any endorsement or acceptance of such boundaries by IOM.

DISPLACEMENT INFORMATION

#	Arrival date on the host location	Displaced population	Departure location	Population category	Host sous-prefecture	Host location	Reason for movement	Means of transportation	Priority needs		
1	02/05/2023	229 households, 1200 individuals	Tchoukou-Martheye (Liwa)	IDPs	Liwa	Site of Bouradjaram	Displacement due to armed attack	On foot and riding animals	Water	Food	Non-Food Items
2	03/05/2023	120 households, 450 individuals	Konguyo (Kaiga-Kindjiria)	IDPs	Daboua	Site of Guidallom	Preventive displacement	On foot and riding animals	Food	Shelter	Water
3	03/05/2023	360 households, 3 240 individuals	Litiri, Kabirom Kanlli et Klakamia (Ngouboua)	IDPs	Ngouboua	Site of Wawillom	Preventive displacement	On foot and by canoe	Food	Shelter	Water
4	08/05/2023	350 households, 1 500 individuals	Tchoukou-Kapi (Ngouboua)	IDPs	Liwa	Site of Nguilourou	Displacement due to armed attack	On foot and riding animals	Food	Shelter	Water