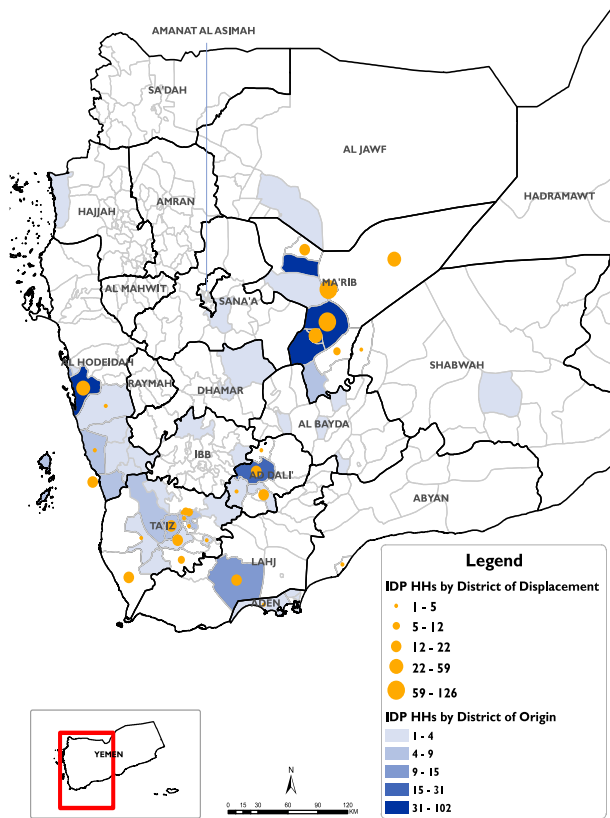


RAPID DISPLACEMENT TRACKING (RDT)

Reporting Period : 13 - 19 Sep 2020

Published on: 20 September 2020

Displaced Households by District of Displacement and Origin	Number of Displaced Households (IDP HHs) per Governorate			
	Governorate of Displacement	IDP HH Displaced during the week	IDP HH who left displaced location within the week	Total IDP HH
		13 to 19 Sep		01 Jan to 19 Sep
	Hajjah	N/A	N/A	N/A
	Al Dhale'e	41	0	2,397
	Al Hudaydah	83	0	2,792
	Taizz	90	1	1,959
	Amanat Al Asimah	N/A	N/A	N/A
	Ibb	N/A	N/A	N/A
	Marib	353	0	10,570
	Amran	N/A	N/A	N/A
	Sana'a	N/A	N/A	N/A
	Shabwah	2	0	659
	Lahj	14	0	836
	Aden	2	7	149
	Sa'ada	N/A	N/A	N/A
	Abyan	3	0	777
	Dhamar	N/A	N/A	N/A
	Hadramaut	7	0	1,112
	Al Bayda	0	0	138
	Al Jawf	0	0	1,561
	Raymah	N/A	N/A	N/A
	Al Mahwit	N/A	N/A	N/A
	Socotra	0	0	0
	Al Maharah	0	0	569
	Total	595	8	23,519



*Based on data collected during 13 - 19 Sep, 2020

DISPLACEMENT TRACKING

DTM's Rapid Displacement Tracking (RDT) tool collects and reports on numbers of households forced to flee on a daily basis, allowing for regular reporting of new displacements in terms of numbers, geography and needs. In the first eight months of 2020, conflict and natural disasters have resulted in new patterns of displacement, particularly in Marib, Al Hudaydah, Al Dhale'e, Taizz and Al Jawf governorates.

WEEKLY UPDATE

Between 13 and 19 September, newly displaced households were recorded in Marib (353 HH), Taizz (90 HH), and Al Hudaydah (83 HH). Most of these displacements were the result of increased fighting in Marib (352 HH), Al Hudaydah (118 HH) and Taizz (33 HH).

IDP HH WHO LEFT DISPLACED LOCATIONS

Since the beginning of 2020, DTM also identified other 1,188 previously displaced households who left the displaced location and moved to either their place of origin or some other displaced location.

Displaced People
23,519 Households
141,114 Individuals
*Reported during Jan 01 - Sep 19, 2020

UPDATE: Additional **19** HHs were displaced between Sep 06 - Sep 12, 2020, and have been added in the total households.

Returned People
1,515 Households
9,090 Individuals
*Reported during Jan 01 - Sep 19, 2020

