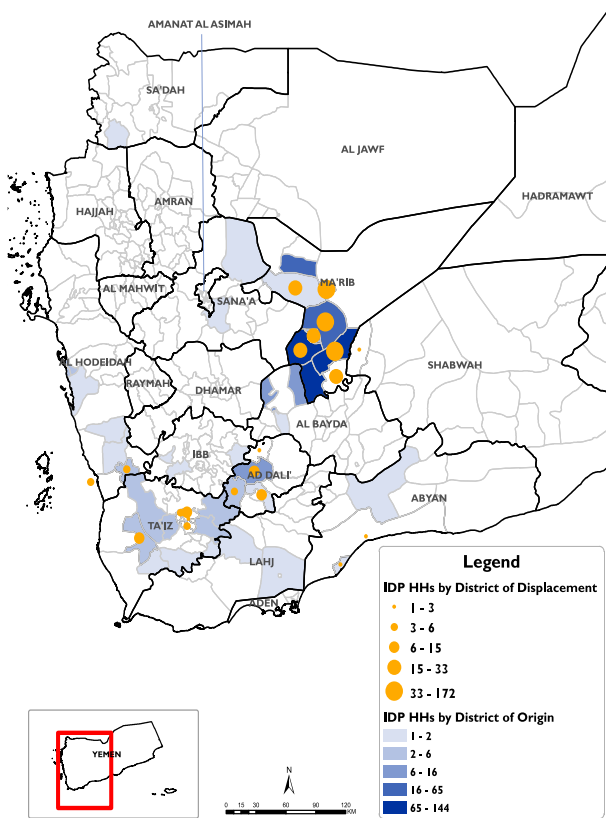


Number of Displaced Households (IDP HHs) per Governorate

Displaced Households by District of Displacement and Origin

Governorate of Displacement	IDP HH Displaced during the week	IDP HH who left displaced location within the week	Total IDP HH
	06 to 12 Sep		01 Jan to 12 Sep
Hajjah	N/A	N/A	N/A
Al Dhale'e	29	0	2,354
Al Hudaydah	11	0	2,709
Taizz	30	0	1,869
Amanat Al Asimah	N/A	N/A	N/A
Ibb	N/A	N/A	N/A
Marib	461	0	10,200
Amran	N/A	N/A	N/A
Sana'a	N/A	N/A	N/A
Shabwah	3	0	657
Lahj	0	0	822
Aden	0	5	147
Sa'ada	N/A	N/A	N/A
Abyan	3	5	774
Dhamar	N/A	N/A	N/A
Hadramaut	3	0	1,105
Al Bayda	0	0	138
Al Jawf	0	0	1,561
Raymah	N/A	N/A	N/A
Al Mahwit	N/A	N/A	N/A
Socotra	0	0	0
Al Maharah	1	0	569
Total	541	10	22,905



*Based on data collected during 06 - 12 Sep, 2020

DISPLACEMENT TRACKING

DTM's Rapid Displacement Tracking (RDT) tool collects and reports on numbers of households forced to flee on a daily basis, allowing for regular reporting of new displacements in terms of numbers, geography and needs. In the first eight months of 2020, conflict and natural disasters have resulted in new patterns of displacement, particularly in Marib, Al Hudaydah, Al Dhale'e, Taizz and Al Jawf governorates.

WEEKLY UPDATE

Between 6 and 12 September, newly displaced households were recorded in Marib (461 HH), Taizz (30 HH), and Al Dhale'e (29 HH). Most of these displacements were the result of increased fighting in Marib (448 HH), Taizz (27 HH) and Al Dhale'e (22 HH).

IDP HH WHO LEFT DISPLACED LOCATIONS

Since the beginning of 2020, DTM also identified other 1,180 previously displaced households who left the displaced location and moved to either their place of origin or some other displaced location.

Displaced People
 22,905 Households
 137,430 Individuals

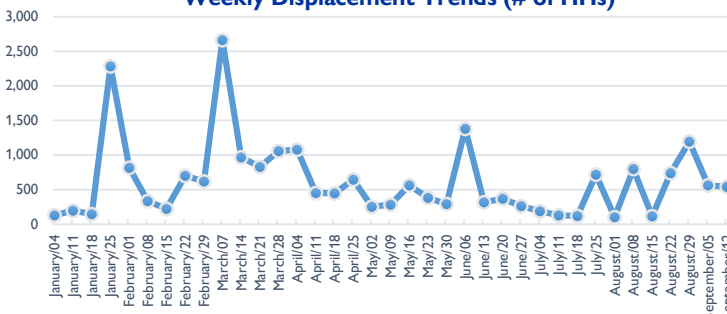
*Reported during Jan 01 - Sep 12, 2020

UPDATE: Additional 22 HHs were displaced between Aug 30 - Sep 05, 2020, and have been added in the total households.

Returned People
 1,496 Households
 8,976 Individuals

*Reported during Jan 01 - Sep 12, 2020

Weekly Displacement Trends (# of HHs)



IDPs Shelter Types

- With Host Families who are Relatives (no rental fee)
- In Isolated/dispersed settlements (detached from a location)
- In Rented Accommodation
- With Host Families who are not Relatives (no rental fee)
- In Other Private Building

