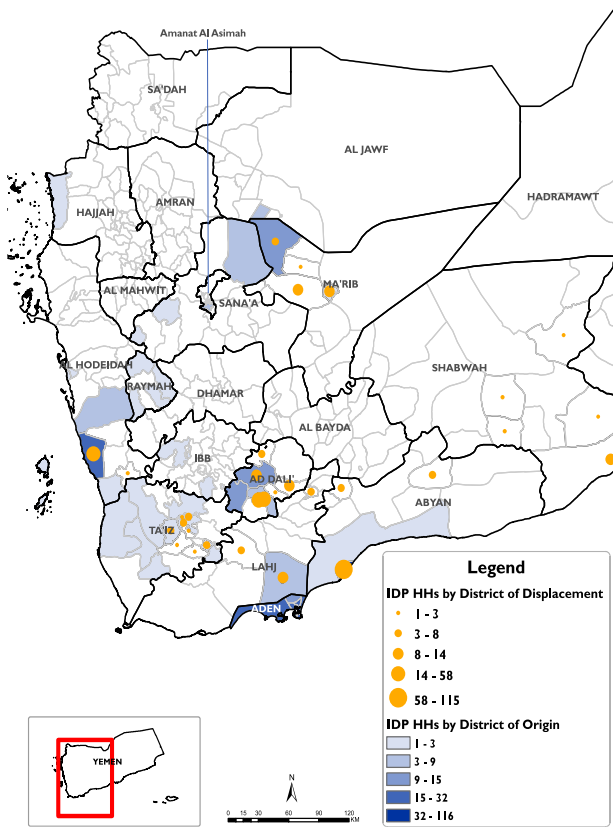


RAPID DISPLACEMENT TRACKING (RDT)

Reporting Period : 10 - 16 May 2020

Published on: 17 May 2020

Displaced Households by District of Displacement and Origin



*Based on data collected during 10 - 16 May, 2020

Governorate	Number of Displaced Households (IDP HHs) per Governorate		
	IDP HH Displaced during the week 10 to 16 May	IDP HH who left displaced location within the week	Total IDP HH 01 Jan to 16 May
Hajjah	N/A	N/A	N/A
Al Dhale'e	138	0	1,372
Al Hudaydah	36	0	929
Taizz	32	0	1,205
Amanat Al Asimah	N/A	N/A	N/A
Ibb	N/A	N/A	N/A
Marib	28	0	8,122
Amran	N/A	N/A	N/A
Sana'a	N/A	N/A	N/A
Shabwah	20	0	119
Lahj	22	0	113
Aden	0	0	12
Sa'ada	N/A	N/A	N/A
Abyan	127	0	395
Dhamar	N/A	N/A	N/A
Hadramaut	17	0	820
Al Bayda	0	0	135
Al Jawf	0	0	211
Raymah	N/A	N/A	N/A
Al Mahwit	N/A	N/A	N/A
Socotra	0	0	0
Al Maharah	0	0	137
Total	420	0	13,570

DISPLACEMENT TRACKING

DTM's Rapid Displacement Tracking (RDT) tool collects and reports on numbers of households forced to flee on a daily basis, allowing for regular reporting of new displacements in terms of numbers, geography and needs. In the first nine months of 2019, conflict has resulted in new patterns of displacement, particularly in within Hajjah, Al Hudaydah, Al Dhale'e, Taizz governorates.

WEEKLY UPDATE

Between 10 and 16 May, newly displaced households were recorded in Al Dhale'e (138 HH), Abyan (127 HH), and Al Hudaydah (36 HH). Most of these displacements were the result of increased fighting in Aden (149 HH), Abyan (117 HH), and Al Hudaydah (43 HH).

IDP HH WHO LEFT DISPLACED LOCATIONS

0 IDP households left their location of displacement and moved either to their place of origin or to some other displaced location.

*Reported during 10 - 16 May, 2020

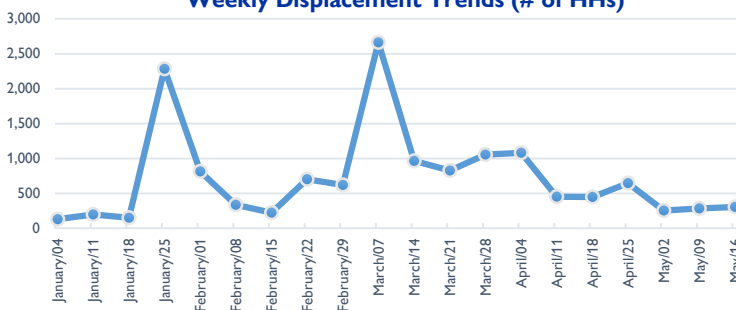
Displaced People
13,570 Households
81,420 Individuals

*Reported during Jan 01 - May 16, 2020

Returned People
533 Households
3,198 Individuals

*Reported during Jan 01 - May 16, 2020

Weekly Displacement Trends (# of HHs)



IDPs Shelter Types (within reporting period)

- With Host Families who are Relatives (no rental fee)
- In Settlements (Grouped of Families) Urban and Rural
- In Rented Accommodation
- With Host Families who are not Relatives (no rental fee)
- In Isolated/dispersed settlements (detached from a location)

