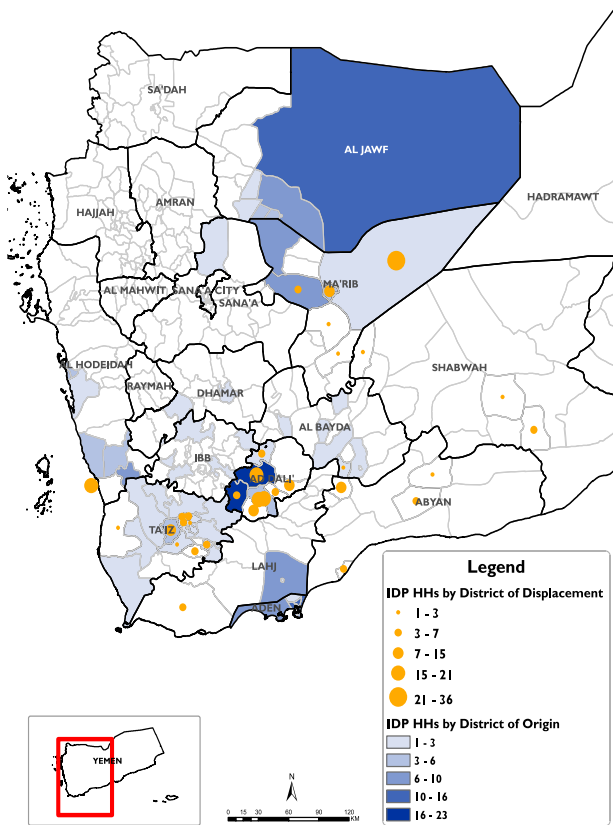


RAPID DISPLACEMENT TRACKING (RDT)

Reporting Period : 03 - 09 May 2020

Published on: 11 May 2020

Displaced Households by District of Displacement and Origin



*Based on data collected during 03 - 09 May, 2020

Number of Displaced Households (IDP HHs) per Governorate

Governorate	IDP HH Displaced during the week	IDP HH who left displaced location within the week	Total IDP HH
	03 to 09 May		01 Jan to 09 May
Hajjah	N/A	N/A	N/A
Al Dhale'e	100	3	1,234
Al Hudaydah	17	0	893
Taizz	43	0	1,173
Amanat Al Asimah	N/A	N/A	N/A
Ibb	N/A	N/A	N/A
Marib	56	0	8,094
Amran	N/A	N/A	N/A
Sana'a	N/A	N/A	N/A
Shabwah	9	1	99
Lahj	4	0	91
Aden	0	0	12
Sa'ada	N/A	N/A	N/A
Abyan	29	1	268
Dhamar	N/A	N/A	N/A
Hadramaut	3	0	803
Al Bayda	2	0	135
Al Jawf	0	0	211
Raymah	N/A	N/A	N/A
Al Mahwit	N/A	N/A	N/A
Socotra	0	0	0
Al Maharah	6	0	137
Total	269	5	13,150

DISPLACEMENT TRACKING

DTM's Rapid Displacement Tracking (RDT) tool collects and reports on numbers of households forced to flee on a daily basis, allowing for regular reporting of new displacements in terms of numbers, geography and needs. In the first nine months of 2019, conflict has resulted in new patterns of displacement, particularly in within Hajjah, Al Hudaydah, Al Dhale'e, Taizz governorates.

WEEKLY UPDATE

Between 3 and 9 May, newly displaced households were recorded in Al Dhale'e (100 HH), Marib (56 HH), and Taizz (43 HH). Most of these displacements were the result of increased fighting in Aden (72 HH), Al Dhale'e (50 HH), and Al Jawf (35 HH).

IDP HH WHO LEFT DISPLACED LOCATIONS

5 IDP households left their location of displacement and moved either to their place of origin or to some other displaced location.

*Reported during 03 - 09 May, 2020



Displaced People

13,150 Households
78,900 Individuals

*Reported during Jan 01 - May 09, 2020

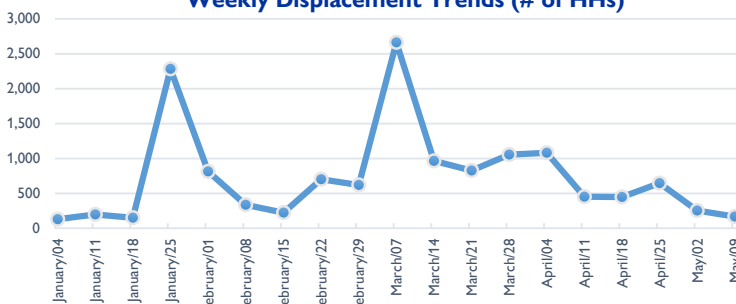


Returned People

528 Households
3,168 Individuals

*Reported during Jan 01 - May 09, 2020

Weekly Displacement Trends (# of HHs)



IDPs Shelter Types (within reporting period)

- With Host Families who are Relatives (no rental fee)
- In Isolated/dispersed settlements (detached from a location)
- In Rented Accommodation
- In Settlements (Grouped of Families) Urban and Rural
- With Host Families who are not Relatives (no rental fee)

