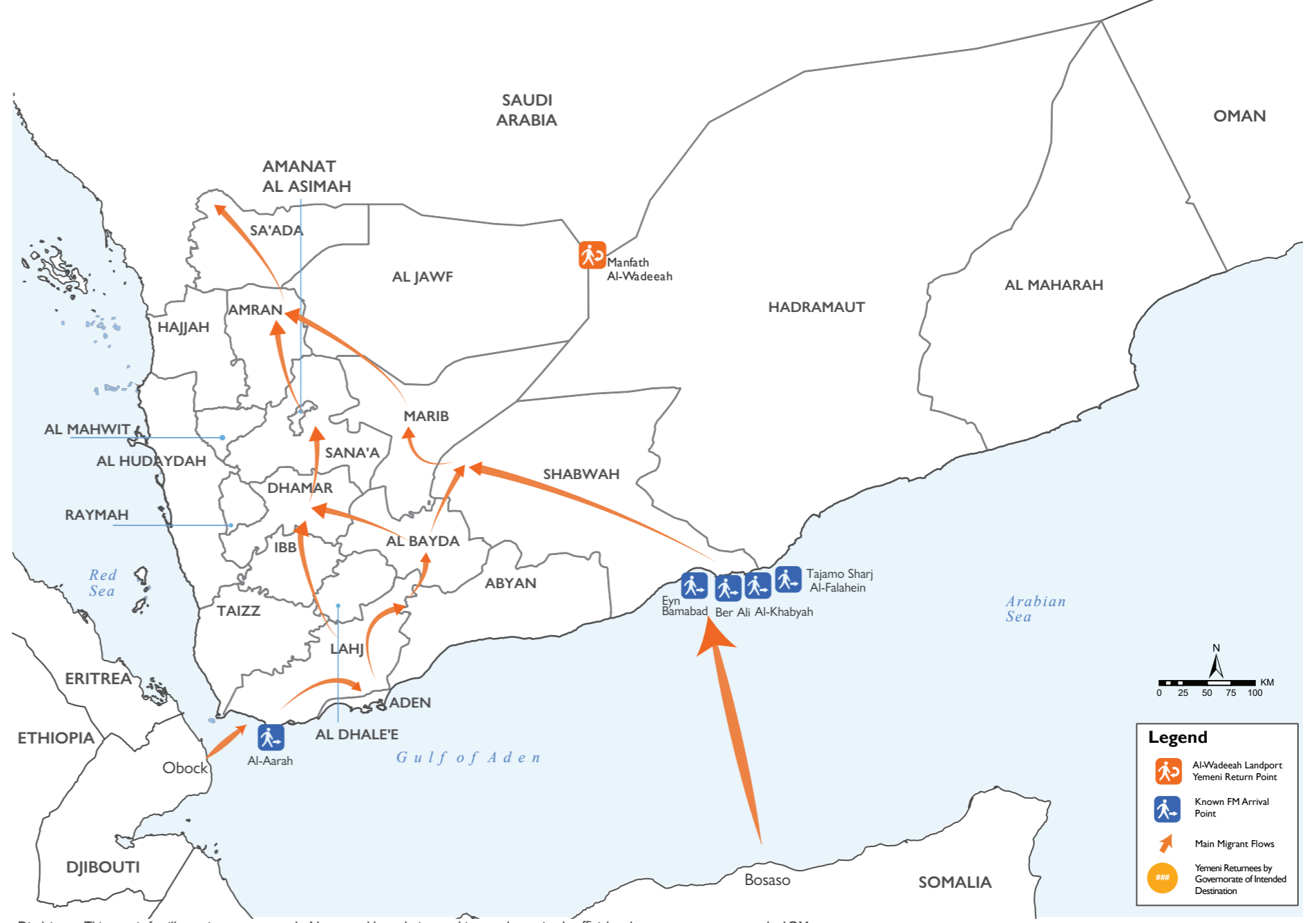
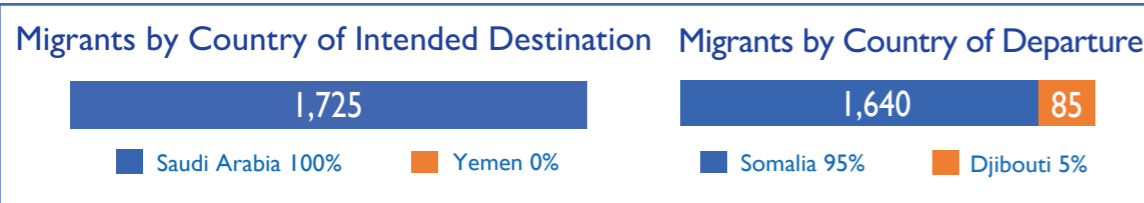
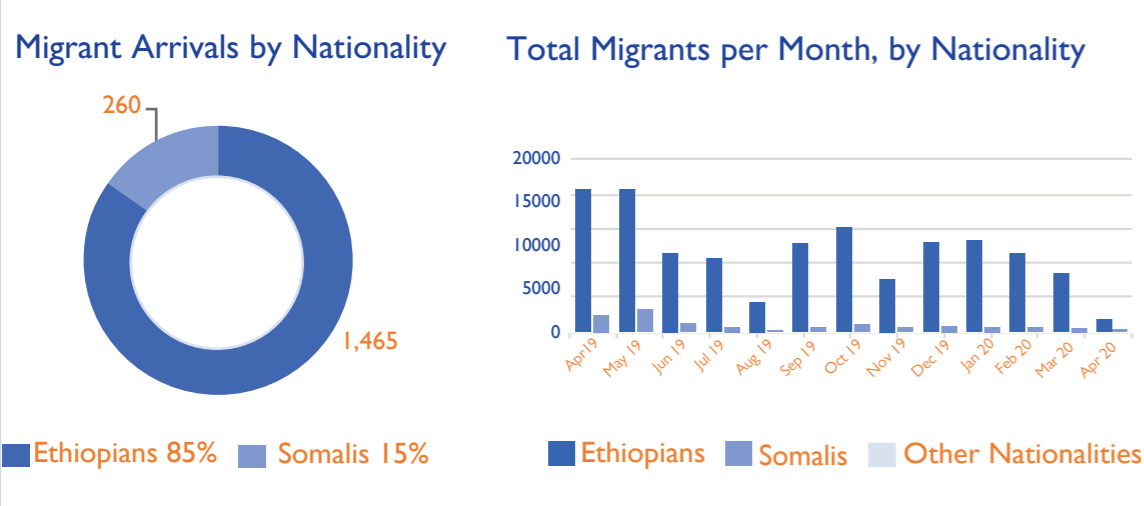
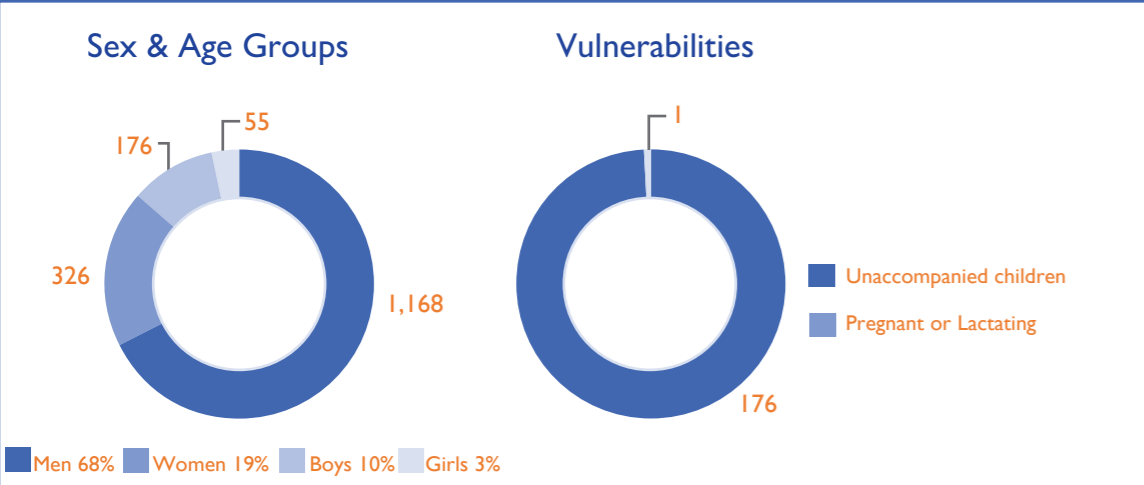


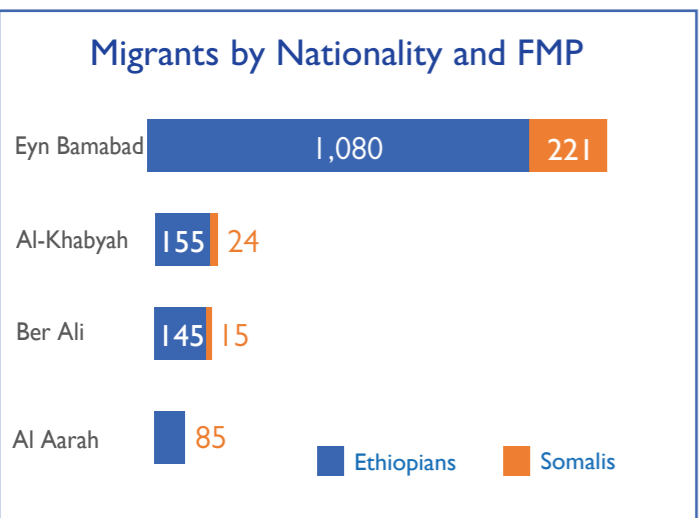
Flow Monitoring Points | Migrant Arrivals and Yemeni Returns from Saudi Arabia in April 2020

The International Organization for Migration (IOM) Displacement Tracking Matrix (DTM) monitors key migrant arrival and Yemeni return locations on Yemen's northern border with the Kingdom of Saudi Arabia (KSA) and southern coastal border. Enumerators placed at Flow Monitoring Points (FMPs) record arrivals of migrants and Yemeni nationals' returns in order to identify different patterns and types of migration, including quantitative estimates to help define the population of irregular migrants entering the country. Access constraints limit the ability to collect data at some migrant arrival points. IOM estimates that 1,725 migrants entered Yemen and no Yemeni returns from KSA during April 2020 bringing the number of migrants who have arrived in Yemen in 2020 to 29,673 and the number of Yemeni returnees from KSA still as 10,965.

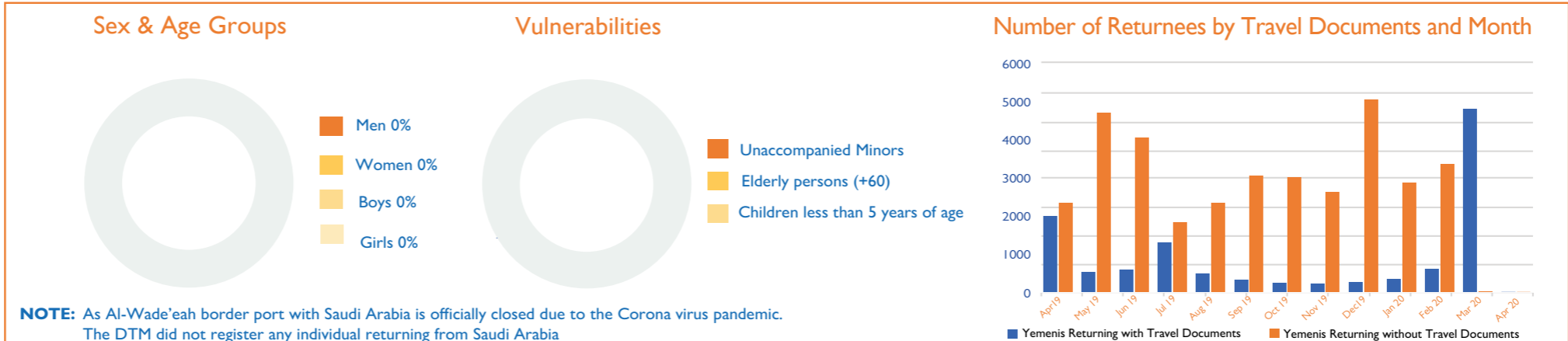
APRIL 2020 MIGRANT ARRIVALS: 1,725



Disclaimer: This map is for illustration purposes only. Names and boundaries on this map do not imply official endorsement or acceptance by IOM.



APRIL 2020 YEMENI RETURNS FROM SAUDI ARABIA: 0



NOTE: As Al-Wade'eah border port with Saudi Arabia is officially closed due to the Corona virus pandemic. The DTM did not register any individual returning from Saudi Arabia

Flow Monitoring Activities are supported by



Disclaimer: Flow mentoring activities are not representative of all flows in the geographic region covered by the exercise and should be understood as only indicative of the individuals captured at the flow monitoring points during the time-frame indicated.