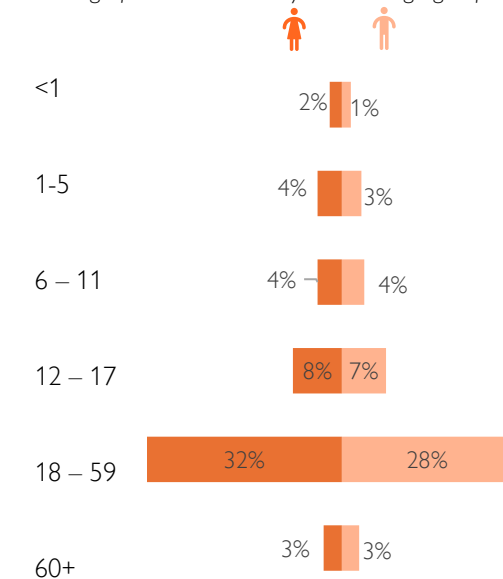
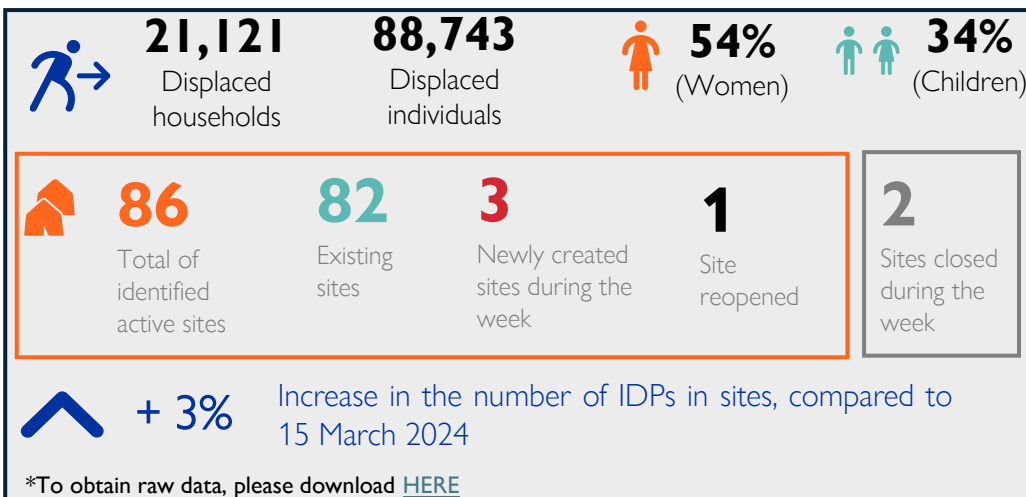
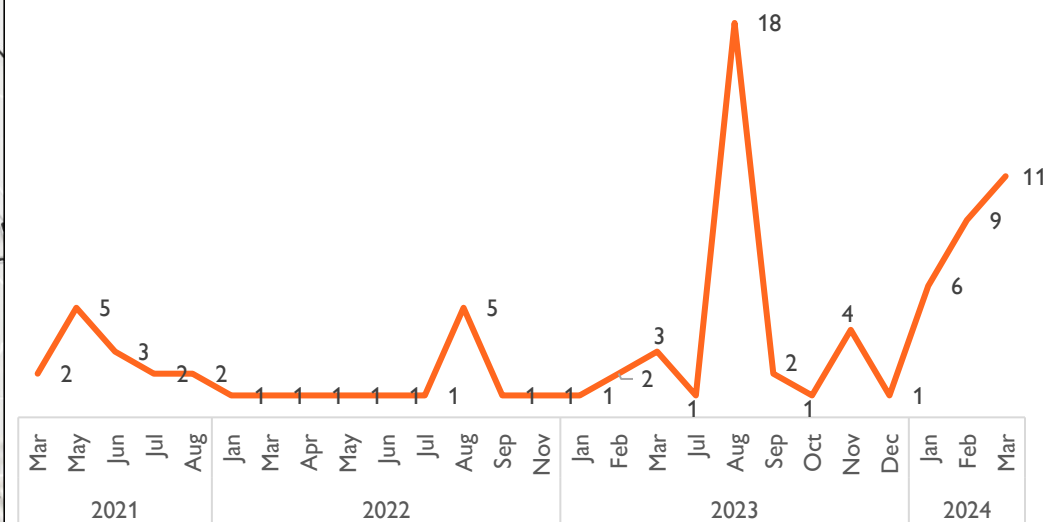
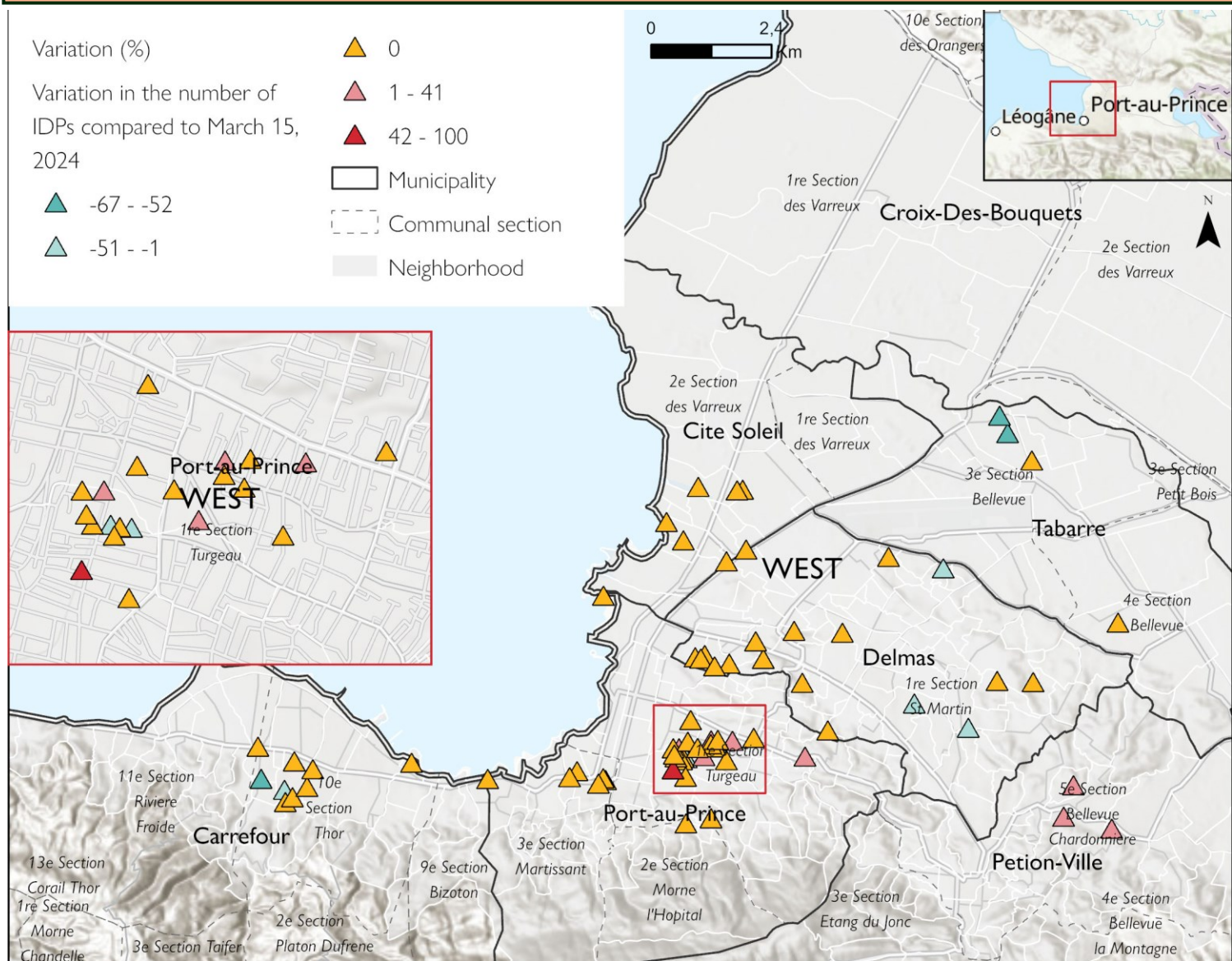


## Key figures on IDPs in sites of MAPAP





**Map 3: Variation in the number of IDPs in sites**



*Sites having experienced significant variations compared to the previous week*

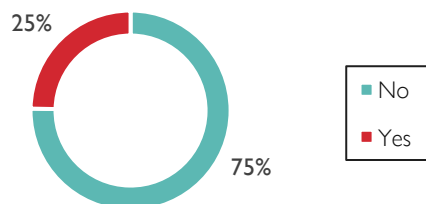
Nom commune	Nom du quartier	Nom Site	Variation du nombre des PDI par rapport au 15 mars 2024
Tabarre	Croix-des-Missions	Sit marekaj	-67%
Tabarre	Croix-des-Missions	Ecole Mixte Vision Nouvelle	-57%
Carrefour	Brochette	Institution mixte le Luxe	-52%
Carrefour	Waney	Eglise Tabernacle de la grace	-13%
Pétion-Ville	Meyotte	Ecole nationale Joseph Bernard de frères	+9%
Port-au-Prince	Bois Verna	Faculté linguistique	+9%
Port-au-Prince	Bourdon	École National République du Colombie	+13%
Port-au-Prince	Bas Peu de Chose	College Die-virtus (Nouveau local du Lycée Pétion)	+22%
Port-au-Prince	Bois Verna	École Nationale Darius Denis	+24%
Port-au-Prince	Bois Verna	Lycée Antenor Firmin	+39%
Pétion-Ville	Kay Colette	Premiere Eglise indépendante de frere	+41%
Port-au-Prince	Delmas 2 - Saint-Martin - Tokyo	Airport Ciné	+98%
Port-au-Prince	Bas Peu de Chose	Radio Mélodie	+100% (Reopened site)

**Closed sites :**

1. Collège Louis Joseph Janvier
2. Eglise Baptiste Beracca

## Threats of eviction and site density

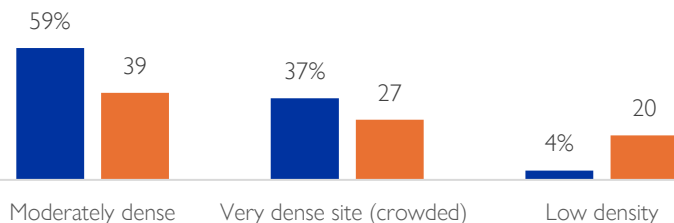
Percentage of IDPs threatened with eviction in the sites



**36** sites threatened with eviction *+7 sites compared to 15 March*

Density in sites (Direct observation)

■ % of IDPs ■ # of sites



## Lighting in sites

"Is there lighting on the site at night?"  
(% of sites)



## People with specific needs on sites



**10,799**

IDPs on site are females  
heads of households



**938**

IDPs in sites are children  
heads of households



**889**

IDPs in sites are  
breastfeeding women



**520**

IDPs in sites are pregnant  
women



**261**

IDPs in sites are presumed  
unaccompanied children

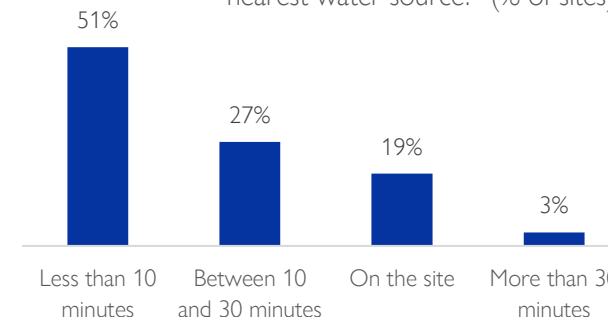


**177**

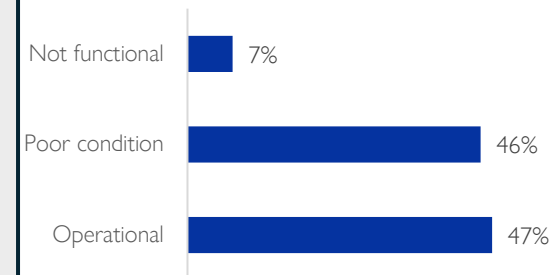
IDPs in sites are injured  
individuals

## Key figures on Water, Sanitation, and Hygiene

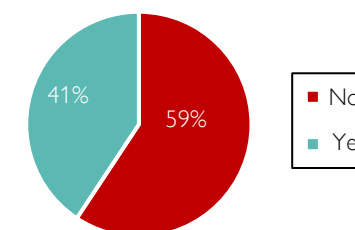
"How long do displaced people walk to access the  
nearest water source?" (% of sites)



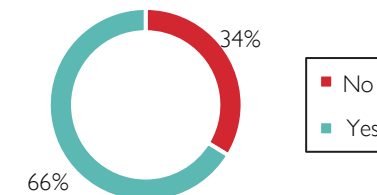
"What is the condition of the majority of  
latrines?" (% of sites)



Existence of a water evacuation  
system (% of sites)



"Are there latrines at this  
displacement site?" (% of sites)



**29** sites do not have latrines. For sites  
that have them, the average is 3  
latrines per site.

Visible evidence of open defecation?  
(observation) (% of sites)



Existence of a garbage collection  
system (% of sites)

