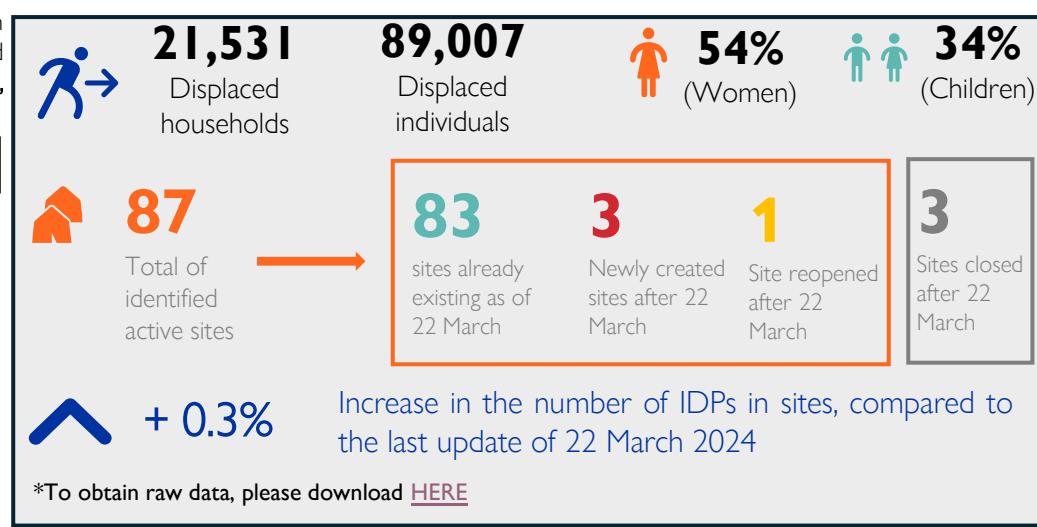


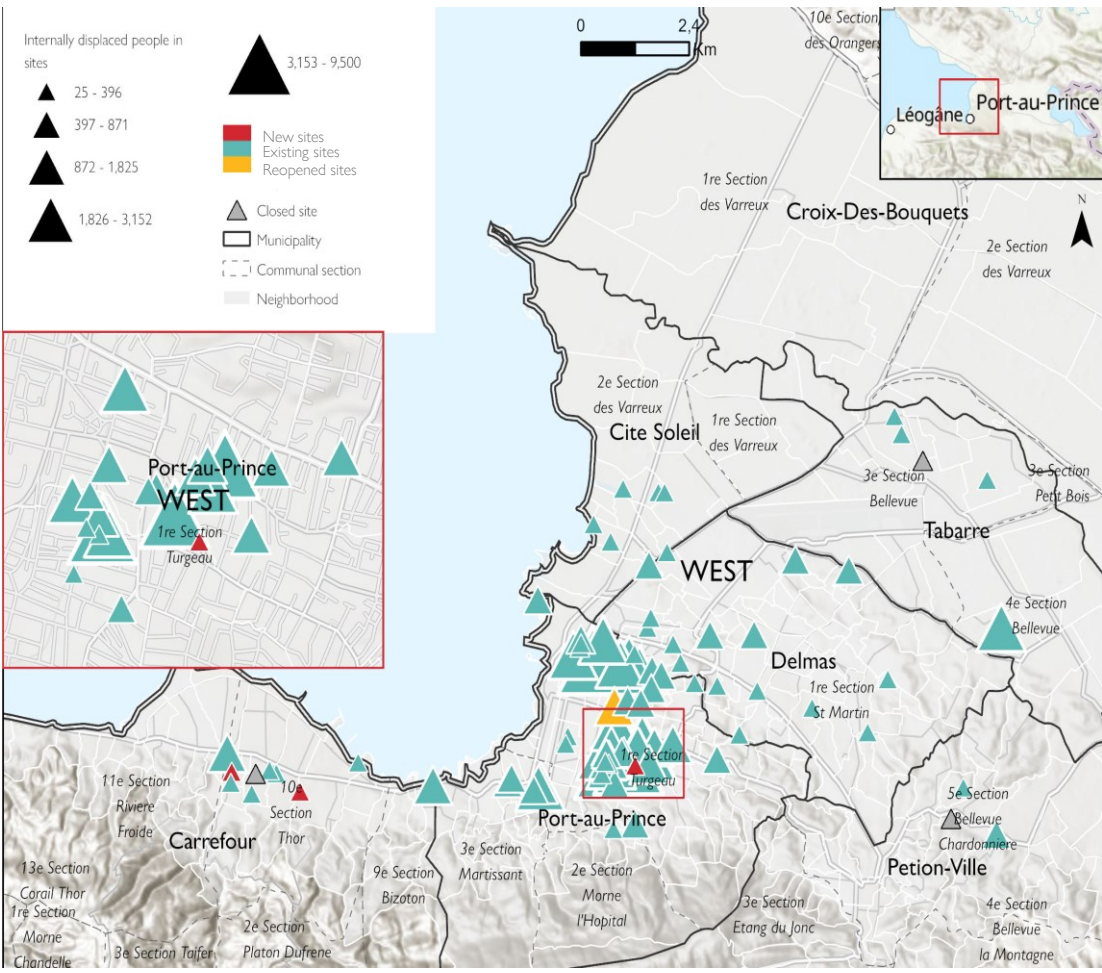
Methodology

Site assessments are carried out through group interviews with key informants, including committees of displaced people in sites. Data collection teams, composed in particular of “brigadiers” (field agents) from the General Directorate of Civil Protection (DGPC), visit all accessible sites and interview key informants (on average 3 key informants per site). Sites not accessible due to security constraints are assessed by phone. **For this update, 279 key informants were interviewed. In 72% of sites interviews were conducted in person/on site and in 28% by phone.**

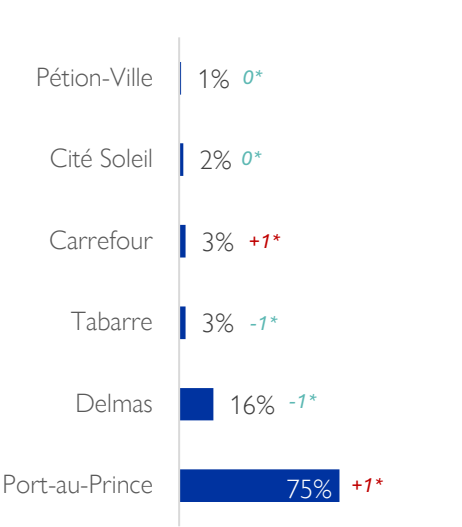
Key figures on IDPs in sites of MAPAP



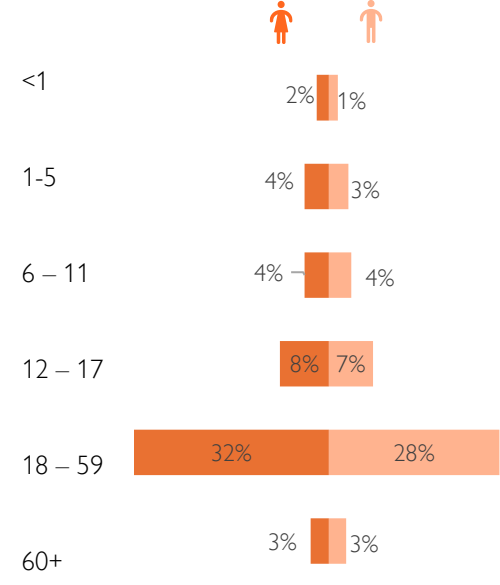
Map 1: Displacement situation in sites of the Metropolitan Area of Port-au-Prince (MAPAP)



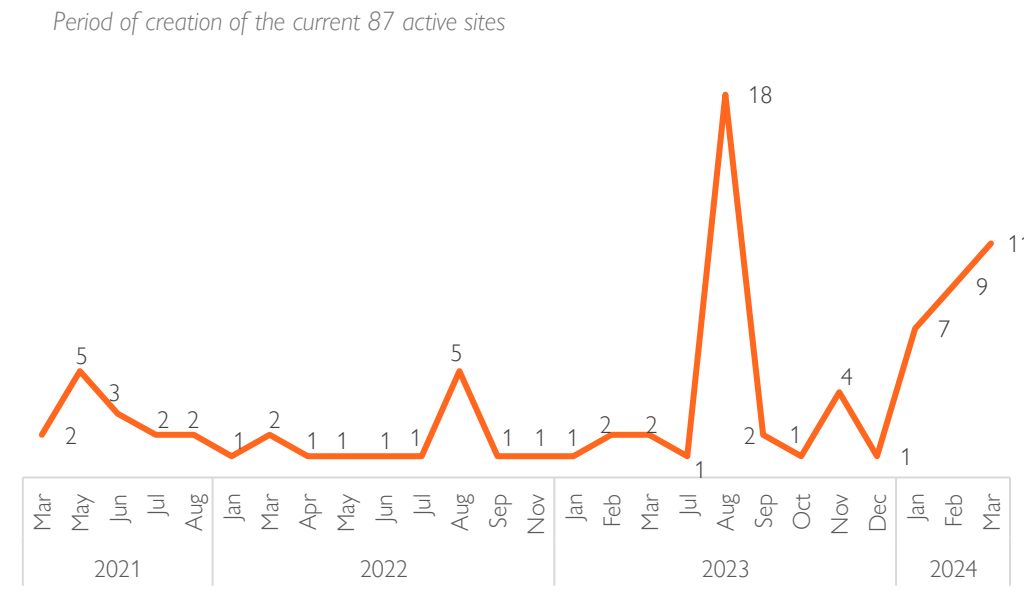
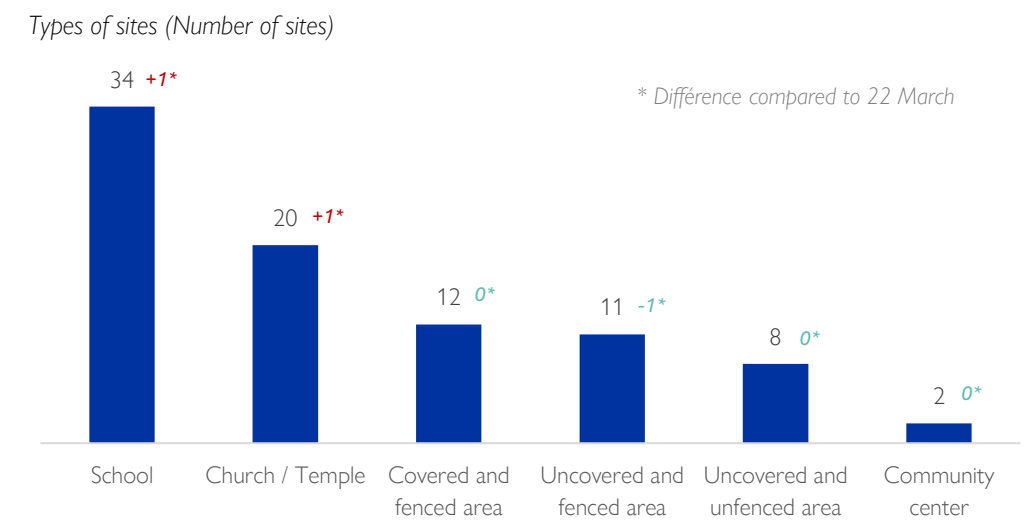
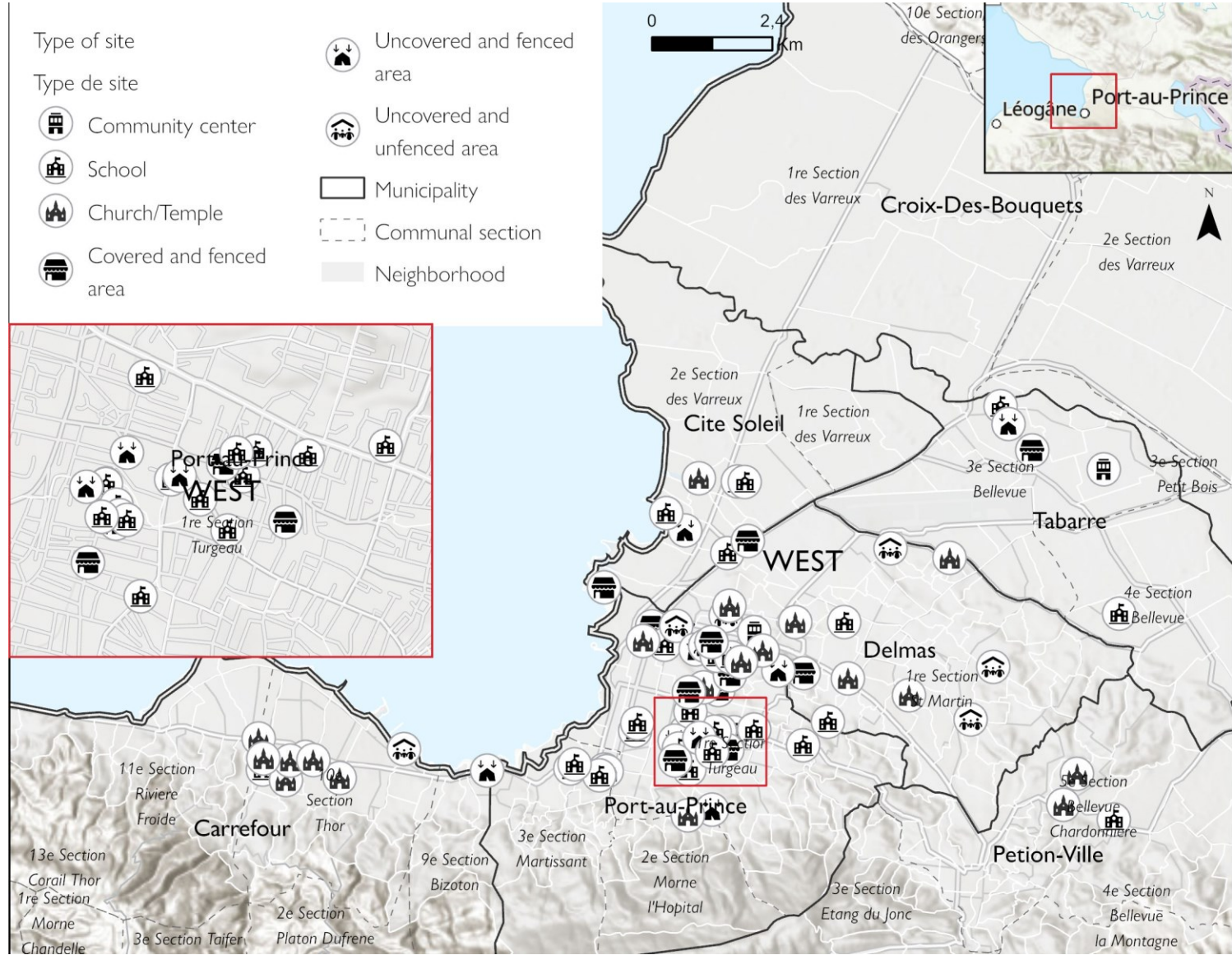
Host municipalities of IDPs in sites (% of IDPs)



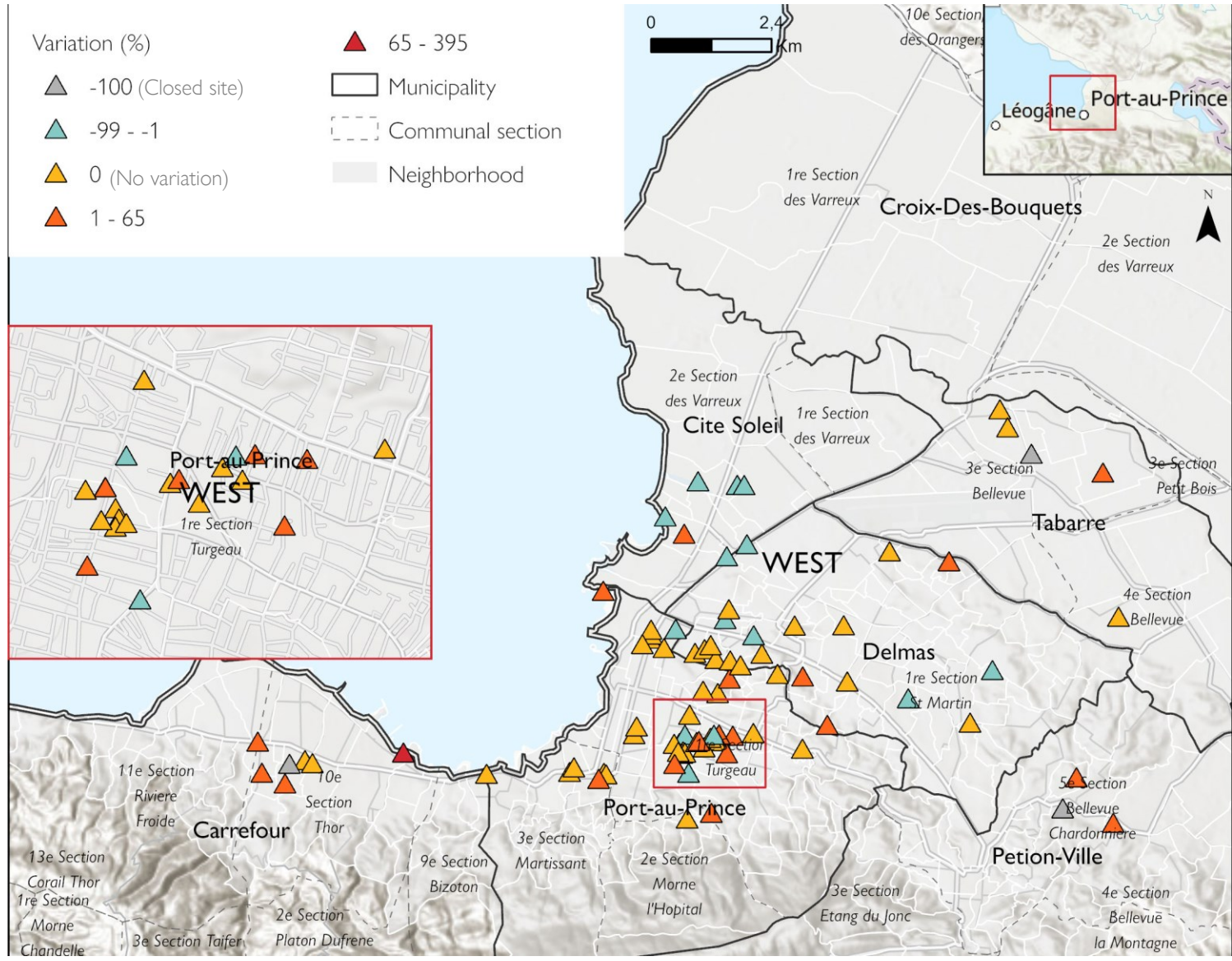
Demographic distribution by sex and age groups



Map 2: Types of IDPs' sites in the Metropolitan Area of Port-au-Prince



Map 3: Variation in the number of IDPs in sites



Sites having experienced significant variations compared to 22 March

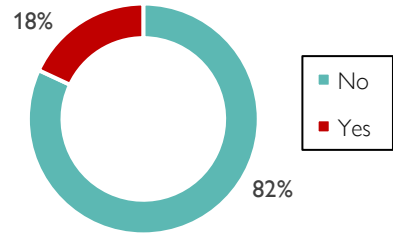
Municipality	Neighborhood	Site name	Number of IDPs	Variation compared to 22 March
Carrefour	St-Charles - Lamentin	Paroisse Saint Charles	1,436	+36%
Carrefour	Waney	Eglise Tabernacle de la grace	152	+36%
Delmas	Delmas 32	École communautaire de St Michel	233	+41%
Port-au-Prince	Bas Peu de Chose	Radio Mélodie	285	+44%
Cité Soleil	Wharf Jeremie	Nan Martelly	755	+48%
Port-au-Prince	Bas Peu de Chose	Ecole Nationale Virginie sampeur	871	+66%
Port-au-Prince	Poste Marchand	Centre d'Urgence de la Sante (Lakou Mouzin)	1,056	+100% (Reopened site)
Carrefour	Bas Thorland	Nan Tchavez	396	+395%

Closed sites :

- Eglise de Dieu la sainteté de Waney 97
- CAMEP
- Première Eglise indépendante de frères

Threats of eviction and site density

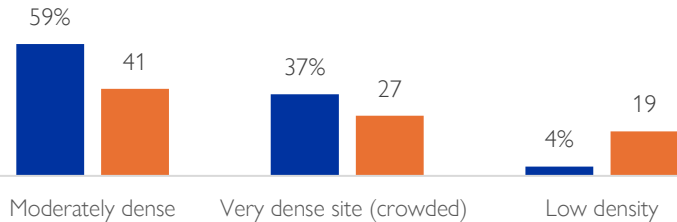
Percentage of IDPs threatened with eviction in the sites



23 sites threatened with eviction

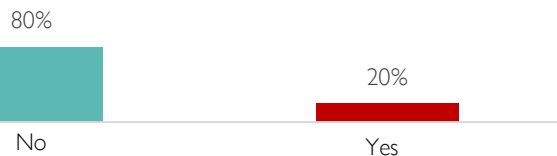
Density in sites (Direct observation)

■ % of IDPs ■ # of sites



Lighting in sites

"Is there lighting on the site at night?"
(% of sites)



People with specific needs on sites*

10,829
IDPs on site are females
heads of households

961
IDPs in sites are children
heads of households

893
IDPs in sites are
breastfeeding women

511
IDPs in sites are pregnant
women

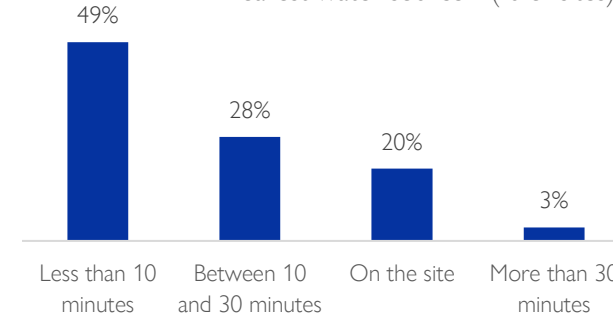
261
IDPs in sites are presumed
unaccompanied children

176
IDPs in sites are injured
individuals

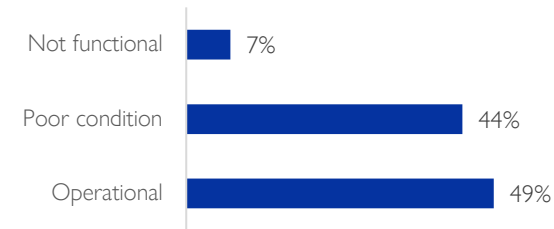
**This is only an overview of certain groups for people with specific needs. Protection cluster partners regularly carry out protection assessments to identify people with specific needs in order to provide assistance that is appropriate for them.*

Key figures on Water, Sanitation, and Hygiene

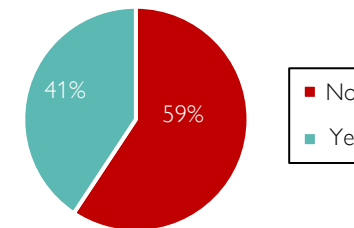
"How long do displaced people walk to access the
nearest water source?" (% of sites)



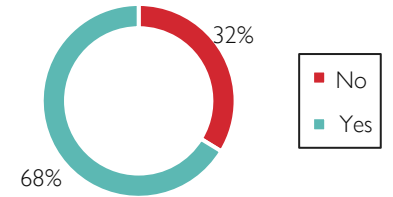
What is the condition of the majority of
latrines? (% of sites)



Existence of a water evacuation
system (% of sites)

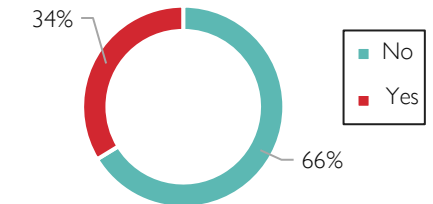


"Are there latrines at this
displacement site?" (% of sites)



29 sites do not have latrines. For sites
that have them, the average is **3**
latrines per site.

Visible evidence of open defecation?
(observation) (% of sites)



Existence of a garbage collection
system (% of sites)

