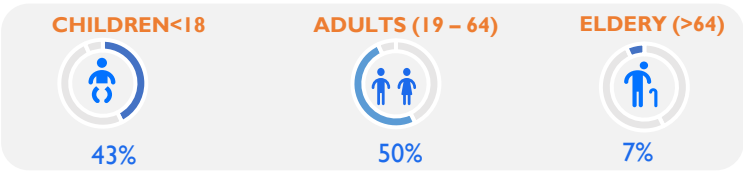


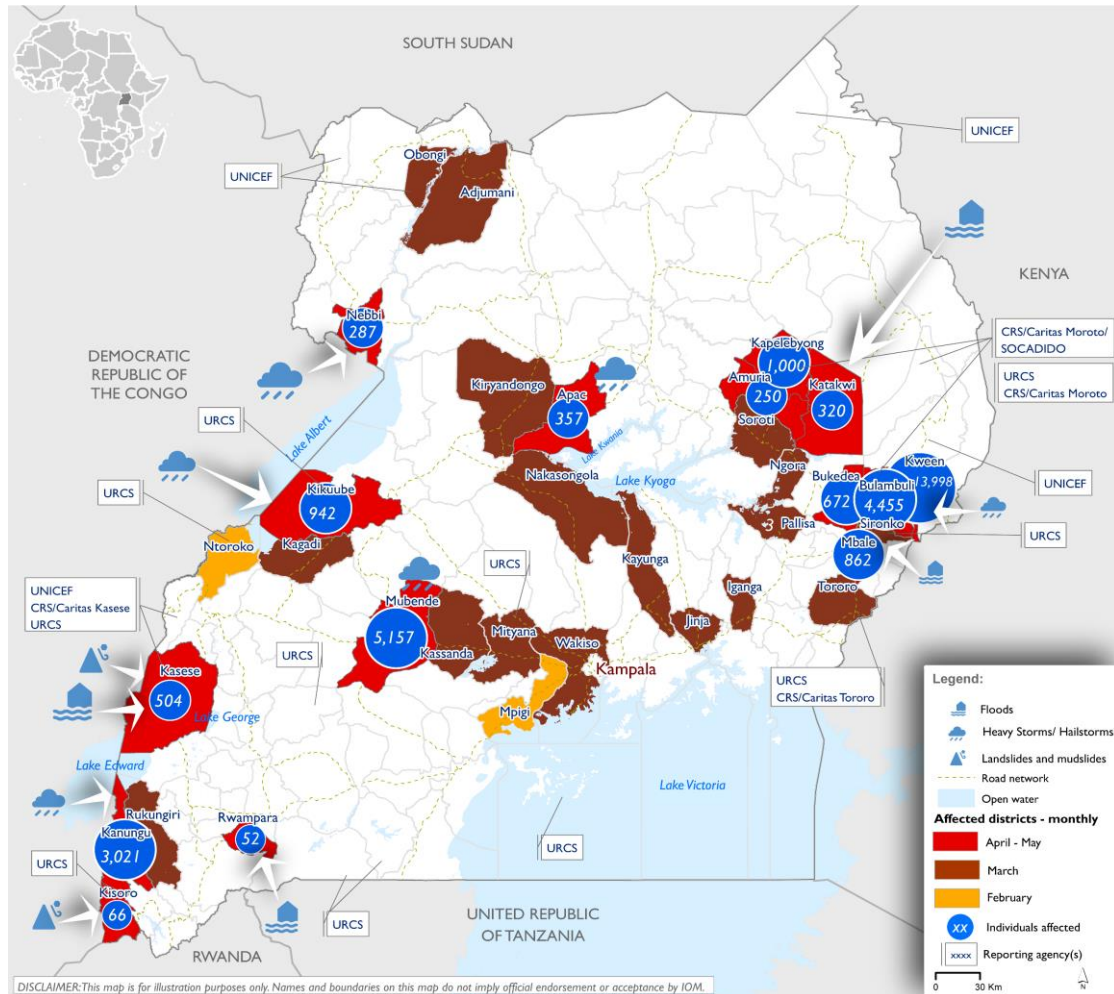
Overview of affected population



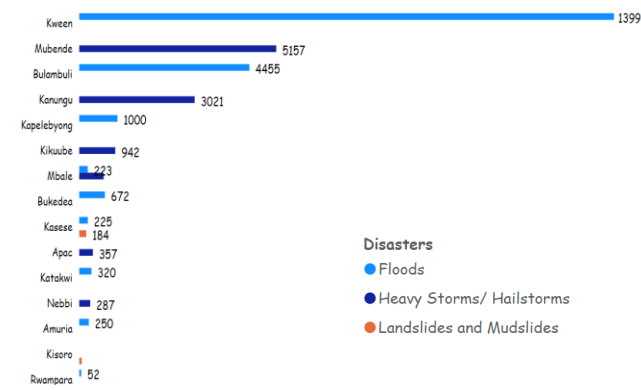
April and May 2022 observations

- During the period from 01 April to the date of reporting (24 May), Uganda has experienced floods, landslides/mudslides and hailstorms/windstorms.
- A total of 31,848 individuals were affected, representing 6,568 households. 1,236 individuals from 988 households were internally displaced by disasters.
- Adults (19-64) were the most affected population group (50%), followed by children <18 (43%) and the elderly >64 (7%).
- The most pressing needs are health, water supply, food assistance, education, sanitation and hygiene related.
- So far in 2022, 46,519 individuals have been affected by disasters, representing 11,368 households. A total of 4,434 individuals representing 1,521 households have been Internally displaced.
- As the March, April and May (MAM) rainy season comes to an end, light rainfall (averaging less than 50 mm) is expected across the nation in the month of June. Therefore, a reduction in disasters triggered by rainfall is anticipated.

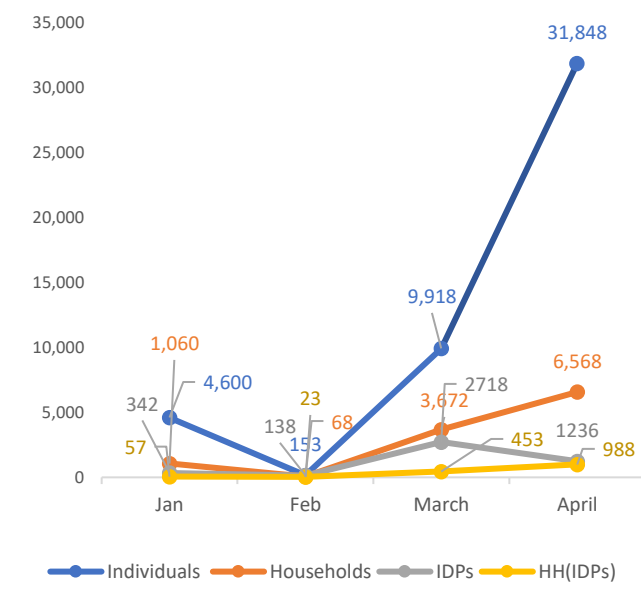
Affected Districts by Disasters – April/May 2022



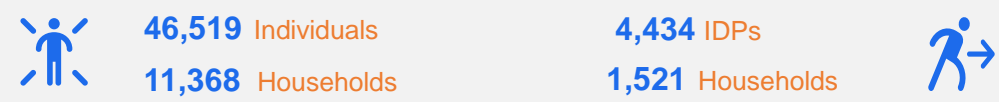
Most affected districts in April/May



2022 Monthly observations



2022 Cumulative observations



Data Sources

Needs rank assessment per Subcounty

District	Subcounty	Health	Water supply	Sanitation	Hygiene promotion	Shelter	Food assistance	Nutrition	Education	NFI	Protection	Child protection	SGBV	Livelihood
Rwampara	Bugamba	3	1	2	3	3	3	1	1	1	2	3	5	1
Nebbi	Nyaravur	1	1	1	1	1	1	1	1	1	1	1	1	1
Mubende	Kasambya	2	2	2	2	2	1	2	1	3	3	4	2	2
Mbale	Namabasa	1	1	2	1	1	1	1	1	1	2	1	2	1
	Bukiende	1	1	2	2	1	1	1	1	2	2	1	1	2
	Namabasa	1	2	2	1	1	1	1	1	1	1	1	1	1
	Kirundo	2	4	4	3	3	3	4	3	4	5	3	5	4
Kikuube	Kyangwali	1	2	3	2	2	2	2	2	2	2	2	2	2
Katakwi	Magoro	2	2	2	2	2	1	2	1	2	2	1	2	2
	Karusandara	1	1	2	1	1	1	1	2	2	2	2	2	2
Kasese	Kitholhu	3	4	4	2	2	2	4	4	4	4	2	4	4
Kapelebyong	Kapelebyong	2	2	2	2	2	1	2	1	2	2	1	2	2
	Okungur	2	1	1	2	2	1	1	1	2	2	1	1	2
Kanungu	Kihihi	3	3	2	1	1	1	2	1	2	1	1	1	1
Bulambuli	Bunambutye	1	1	1	1	1	1	1	1	2	1	1	2	2
Bukedea	Kolir	1	1	1	2	1	1	2	1	2	2	1	2	1
Apac	Akokoro	1	2	4	3	3	3	3	3	3	3	3	3	3
Amuria	Willa	2	1	2	2	2	1	1	1	2	2	1	2	2

HIGH MEDIUM LOW NOT NOT APPLICABLE

PRIORITY	1	2	3	4	5
----------	---	---	---	---	---

Data Sources



UGANDA NATIONAL METEOROLOGICAL AUTHORITY

