

POPULATION COUNT

Bentiu IDP Camp

Data collection: October 2022

Population overview (October 2022): 102,811 individuals.

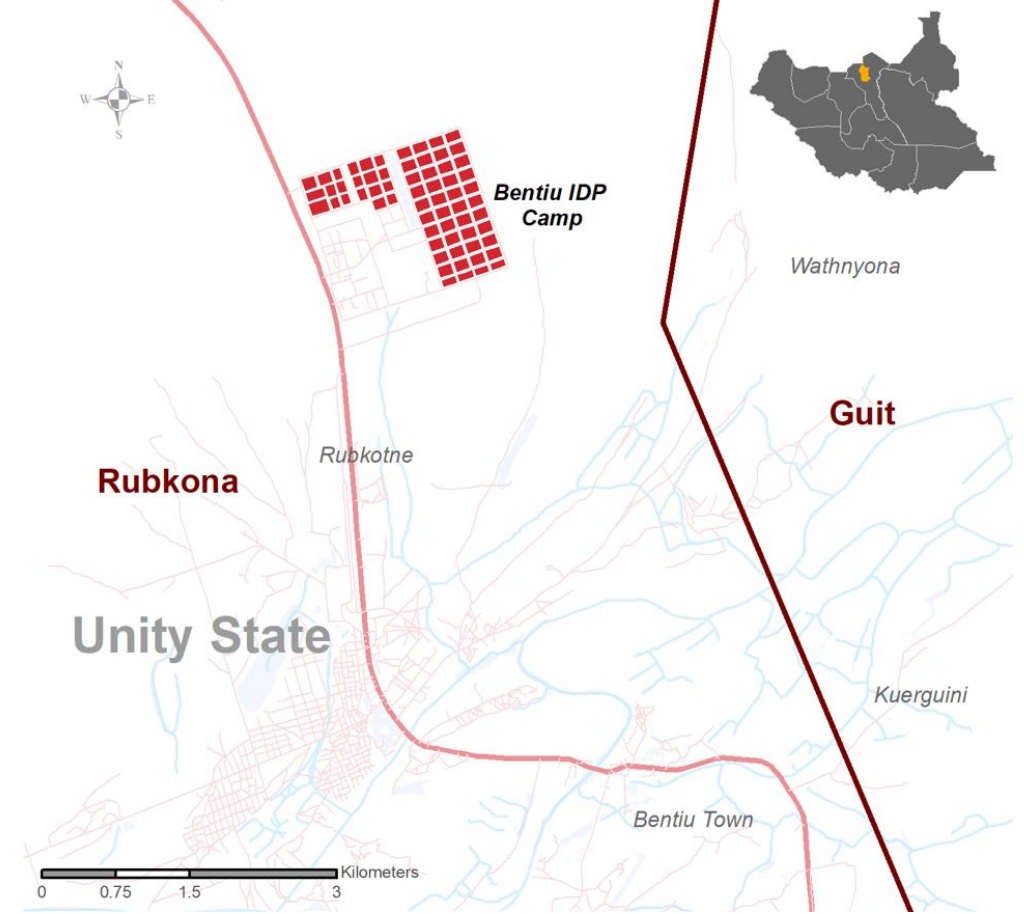
Between 1 August and 31 October 2022, 137,879 individuals (31,072 households) are biometrically registered as active beneficiaries in the site, representing an increase of two per cent of individuals since January following the latest biometric registration maintenance in Bentiu IDP Camp.

Recognizing that there have been significant population changes since the last overall biometric registration / verification, IOM DTM conducts regular population counts to monitor population dynamics and displacement trends. This exercise shows that the actual number of persons currently living at Bentiu IDP camp remains lower than the registered total.

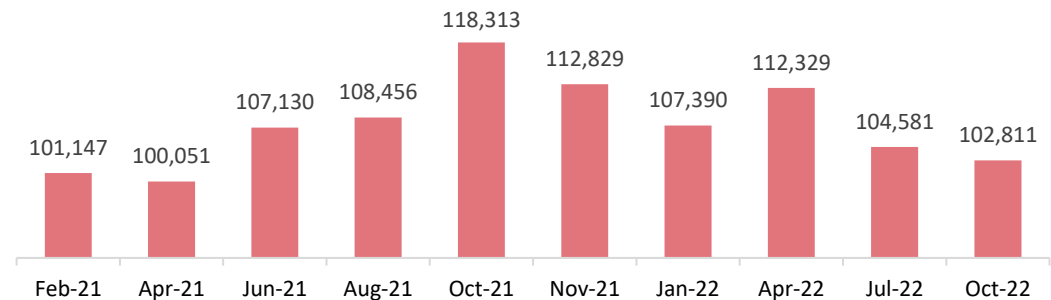
As per October 2022 population count findings, the Bentiu IDP camp population stands at 102,811 individuals (16,706 households) in 11,737 inhabited shelters (on average of 9 individuals per shelter). This represents a two per cent decrease compared to July 2022.

Looking at the daily mobility dynamic, IOM DTM's daily gate count of individual entries and exits through the camp's gate shows slightly more exits (525,840 individuals) than entries (480,590 individuals) through gate count findings between 1 August and 31 October 2022.

Between 1 August and 31 October 2022, Displacement Site Flow Monitoring (DSFM) at points of entry in Bentiu IDP camp recorded 128 interviews accounting for 882 individuals permanently exiting the camp. The majority of exits during this period departed to locations within Unity State (48%), with most leaving to Rubkona (23%), Leer (9%), Koch (9%), Guit (5%), Mayendit and Panyijar (2%). Twenty-one per cent moved to Juba, Central Equatoria state. The remaining 31 per cent moved to Kampala (12%), Nairobi (5%), Jonglei (5%), North Kordofan (4%) and other (5%). The recorded permanent exits were mainly driven by the need to look for better education opportunities (38%), be with family (21%), access to livelihood or work opportunities (20%) and improved living conditions at destination (9%).



Monthly population trends at Bentiu IDP Camp, February 2021 – October 2022*



*In February, March, May, June, August, and September 2022, IOM was unable to conduct population counts.

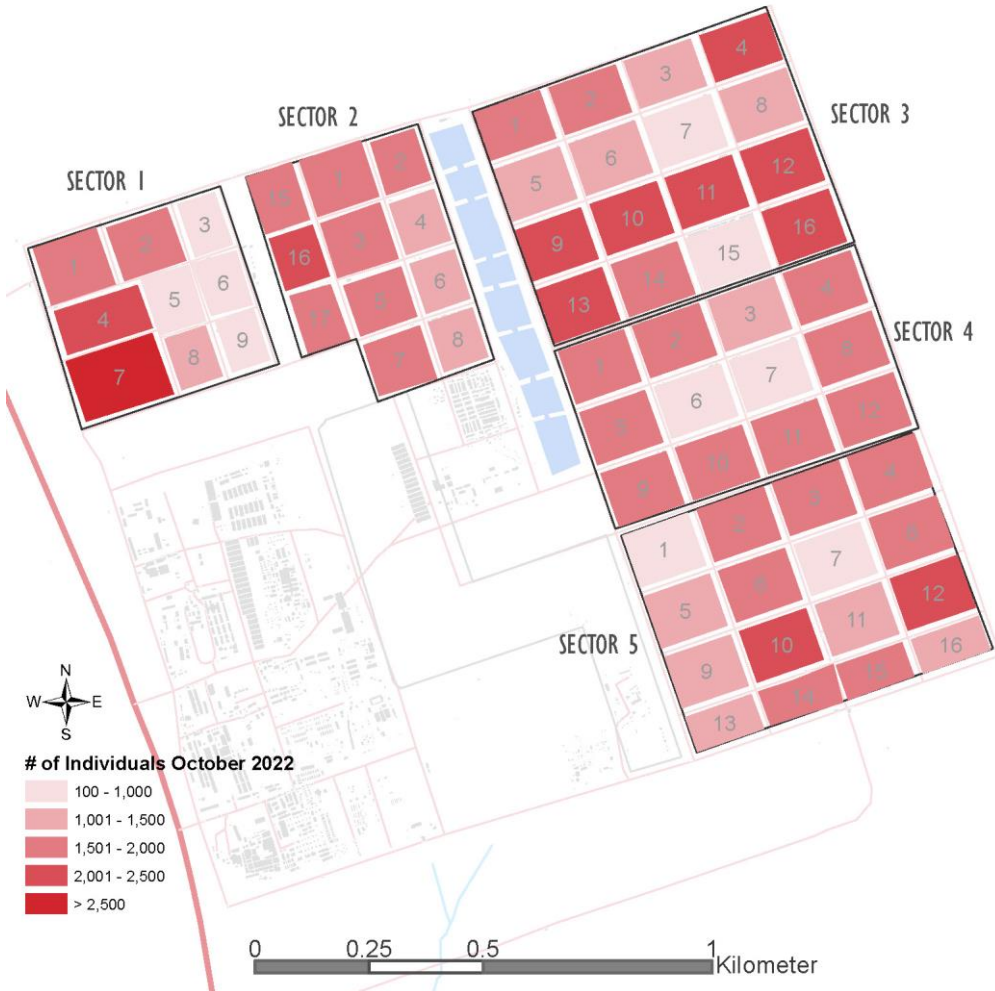


Population in Bentiu IDP Camp (October 2022): 102,811 ind.

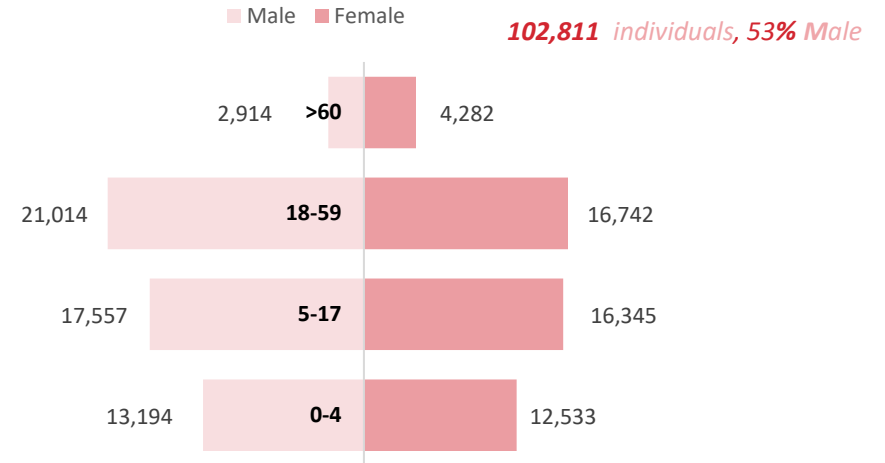
SECTOR 3 28,213	SECTOR 5 24,716	SECTOR 4 18,379	SECTOR 2 18,155	SECTOR 1 13,348
--------------------	--------------------	--------------------	--------------------	--------------------

The most populous sectors were Sectors 3 hosting 27 per cent of the overall population, followed by sector 5 (24%), sector 4 (18%), sector 2 (18%), and Sector 1 (13%).

The blocks with the largest populations were recorded across the following sectors: **Sector 1** Block 7 (3,231 individuals), **Sector 3** Block 4 (2,468 individuals), **Sector 5** Block 12 (2,456 individuals), **Sector 3** Block 9 (2,417 individuals) and **Sector 1** Block 4 (2,398 individuals).



Bentiu IDP Camp, Population by age and sex (October 2022)



For further information, contact southsudandtm@iom.int & visit <https://displacement.iom.int/south-sudan>.

DTM IS SUPPORTED BY

