



**DISPLACEMENT TRACKING MATRIX (DTM) AMHARA, ETHIOPIA  
ROUND 12: JULY/AUGUST 2018**

*Summary of key findings*

**DATE OF PUBLICATION:**



Funded by  
European Union  
Humanitarian Aid

# DISPLACEMENT TRACKING MATRIX (DTM) AMHARA, ETHIOPIA ROUND 12: JULY/AUGUST 2018



DTM
IOM • OIM

THE UN MIGRATION AGENCY

## OVERVIEW OF DISPLACEMENT

### AMHARA REGION

### DTM Round 12

### FROM JULY 2 - 31, 2018

**Sites by causes of displacement**

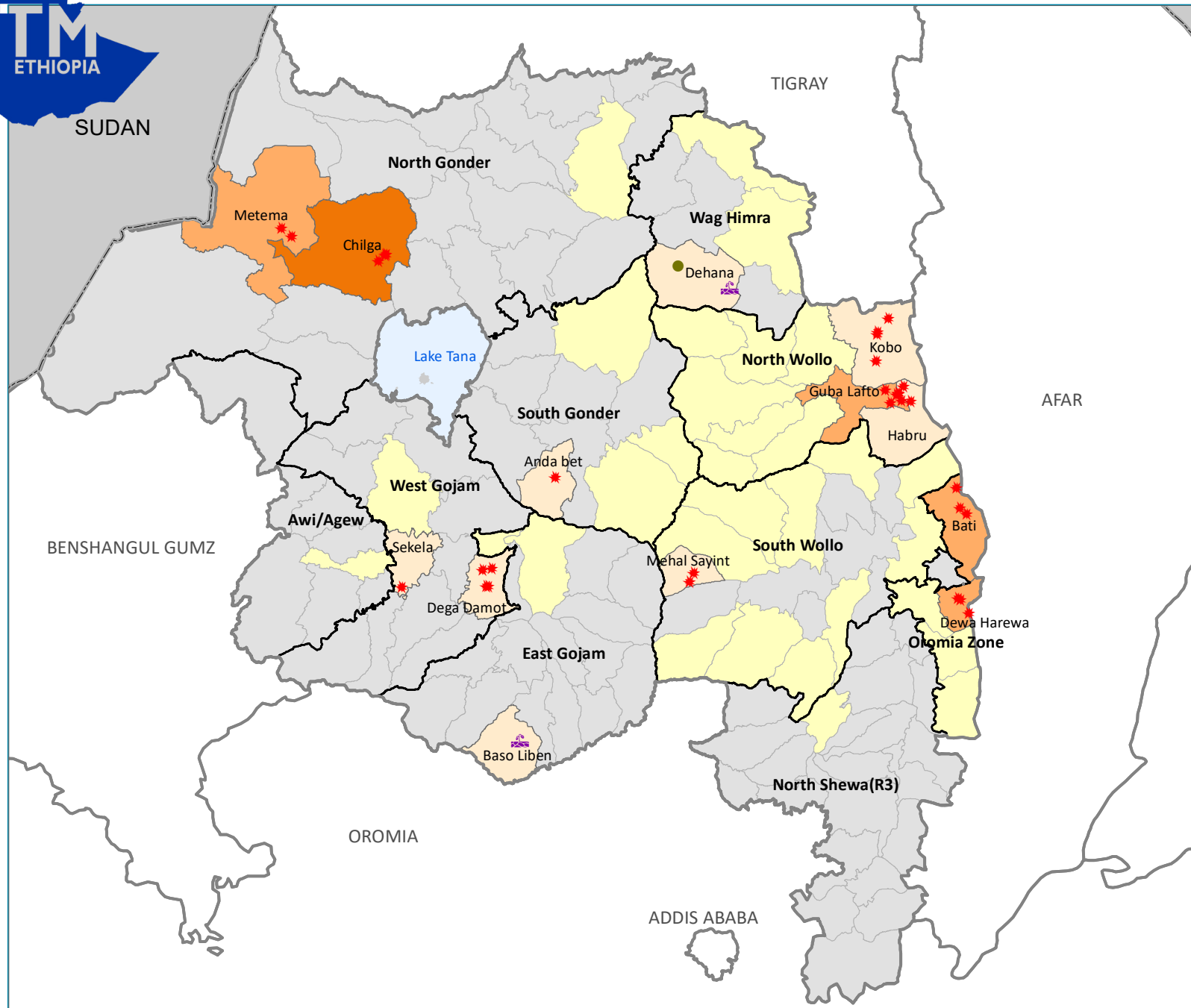
- ★ Conflict
- ✿ Climate induced
- Others

**IDPs in assessed woredas**

|   |  |
|---|--|
| <span style="background-color: #f4b084; border: 1px solid black; display: inline-block; width: 15px; height: 10px;"></span> 181 - 500     | <span style="border-bottom: 1px dashed black; width: 15px; display: inline-block;"></span> Boundaries            |
| <span style="background-color: #e69d00; border: 1px solid black; display: inline-block; width: 15px; height: 10px;"></span> 501 - 1,000   | <span style="border-bottom: 1px solid black; width: 15px; display: inline-block;"></span> International Boundary |
| <span style="background-color: #d9534f; border: 1px solid black; display: inline-block; width: 15px; height: 10px;"></span> 1,001 - 1,020 | <span style="border-bottom: 1px solid black; width: 15px; display: inline-block;"></span> Regional Boundary      |
| <span style="background-color: #ffff99; border: 1px solid black; display: inline-block; width: 15px; height: 10px;"></span> No IDPs       | <span style="border-bottom: 1px solid purple; width: 15px; display: inline-block;"></span> Zonal Boundary        |
| <span style="background-color: #cccccc; border: 1px solid black; display: inline-block; width: 15px; height: 10px;"></span> Not assessed  | <span style="border-bottom: 1px solid black; width: 15px; display: inline-block;"></span> Woreda Boundary        |

**Sources :** IOM **Map production date :** 18 Sep 2018  
 This map is for illustration purposes only. Names and boundaries on this map do not imply official endorsement or acceptance by IOM.  
 Map Data Source: Boundary shapefile - CSA 2008

[www.displacement.iom.int/ethiopia](http://www.displacement.iom.int/ethiopia)  
[dtmethiopia@iom.int](mailto:dtmethiopia@iom.int)



**Note:**  
 The newly created zones and woredas boundaries in this region are not available in our Geodatabase; hence their boundaries and figures are combined with their mother zones and woredas.



# DISPLACEMENT TRACKING MATRIX (DTM) AMHARA REGION ETHIOPIA

## ROUND 12: JULY - AUGUST 2018

### AMHARA REGION - KEY FINDINGS

**LOCATION AND CAUSE OF DISPLACEMENT:** 5,783 displaced individuals comprising 1,500 households in 34 displacement sites were identified in Amhara region. These figures represent a decrease of -1,027 in the total individuals (-15.08%) a decrease of -113 households (-7.01%) and an increase of 2 sites (6.25%) since round 11 (May/June 2018). 40.77% sites opened in 2017 and 6.30% opened in 2018. Conflict was the primary cause of displacement for an estimated 90% of the displaced population.

**DEMOGRAPHICS:** 50% of displaced individuals were female and 50% were male. 46% were younger than 18 years old. 3% were over 60 years old.

**SHELTER:** 5 sites reported that over 25% of households were living in shelters that were below regional and cultural standards.

**WASH:** Only 0 sites meet SPHERE standards of access to over 15 liters of water per person per day. 12 (35%) displacement sites reported having no latrines.

**FOOD, NUTRITION AND LIVELIHOODS:** 19 (56%) sites, representing 3861 individuals, reported no access to food. 94% of sites reported that IDPs did not have access to income generating activities.

**HEALTH:** Malaria was the primary health concern in this round of data collection with 12 sites reporting this.

**EDUCATION:** In 3% of sites 50% or less of the children on site are attending formal primary school. Formal primary school education is available at 23 sites. Alternative basic education (ABE) is available at 2 sites.

**COMMUNICATION:** 44% of sites reported that Local Leader were IDPs primary source of information followed by Families/Friends at 41% of sites.

Figure 1 illustrates trends in stock totals of displacement in the region over time compared to recent displacement. Figure 2 shows IDP numbers disaggregated by cause over time.

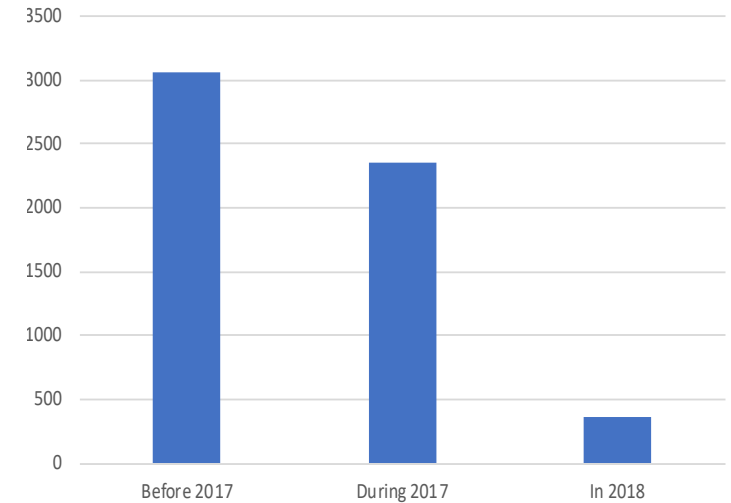


Figure 1: Trends in stock totals of displacement and new displacements from 2017 and 2018

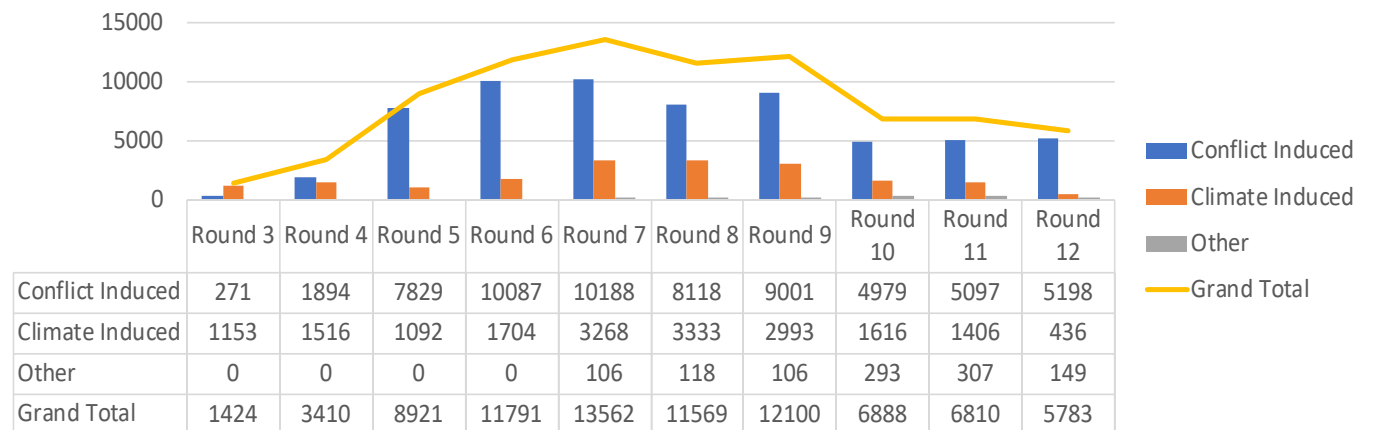


Figure 2: IDPs by cause of displacement by round



## DISPLACEMENT TRACKING MATRIX (DTM) AMHARA REGION ETHIOPIA ROUND 12: JULY - AUGUST 2018

### MOBILITY TRENDS AND CAUSE OF DISPLACEMENT

Conflict has consistently been reported as the primary cause of displacement in Oromia region (as indicated by figures 3 & 4). IDPs displaced in 2018, in 2017 and before 2017 reported being displaced by conflict.

10.30% (595) of IDPs had reportedly been previously displaced. IDPs from 10 (29%) sites were leaving the site. Of these, IDPs from 1 sites were going to the nearest village and IDPs from 1 sites intended to return to their place of origin.

6.30% of all sites identified opened in 2018 while 40.77% opened between January and December 2017. 52.91% of sites opened before 2017.

60.50% of IDPs in the region are internally displaced from the region, within the region. Of the IDPs displaced within the region, 47.50% were displaced within their zone of origin.

Figure 3 shows the number of IDPs displaced by zone and cause of displacement. Figure 4 shows the distribution of IDPs by driver of displacement and time of displacement.

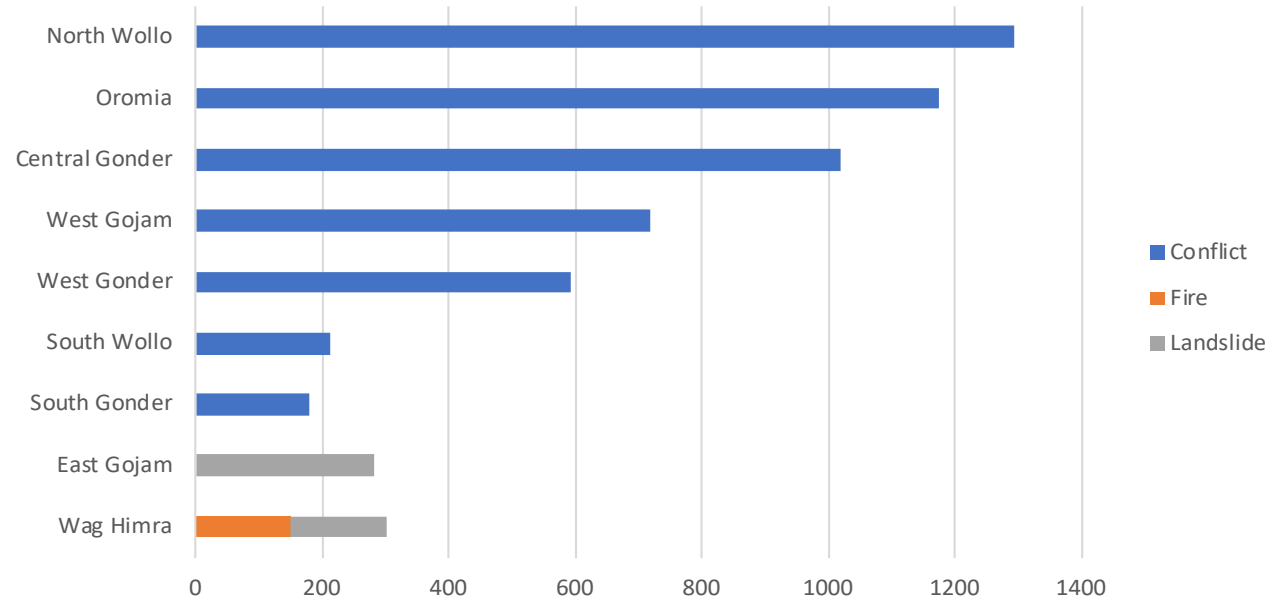


Figure 3: IDPs displaced by zone and cause of displacement

| Duration    | Conflict Induced | Climate Induced | Other |
|-------------|------------------|-----------------|-------|
| Before 2017 | 2,776            | 284             | 0     |
| During 2017 | 2,206            | 152             | 0     |
| In 2018     | 216              | 0               | 149   |

Figure 4: Distribution of IDPs by cause of displacement and time of displacement



# DISPLACEMENT TRACKING MATRIX (DTM) AMHARA REGION ETHIOPIA

## ROUND 12: JULY - AUGUST 2018

### DURABLE SOLUTIONS, VOULNERABILITIES AND DEMOGRAPHICS

At 61.76% of sites IDPs foresaw a resolution to their displacement, while IDPs at 35.29% of sites did not. At the remaining sites key informants either did not know (2.94%), or were not asked the question in a previous round.

At 44.12% of sites IDPs prefer reintegration as a durable solution to their displacement while at 14.71% sites they prefer return. 41.18% of sites reported that IDPs prefer relocation.

Figure 5 shows the percentage of sites reporting various obstacles to returns, while figure 6 shows support IDPs need to return or reintegrate.

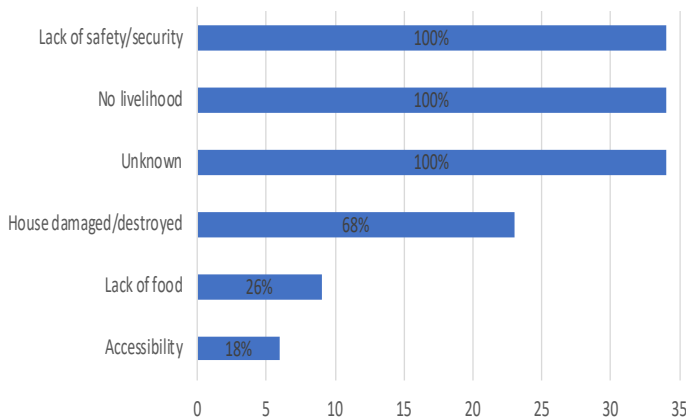


Figure 5: % Sites reporting obstacles to return

The demographic breakdown is shown in figure 7. Individuals with specific vulnerabilities were also reported at displacement sites and are represented in figure 8.

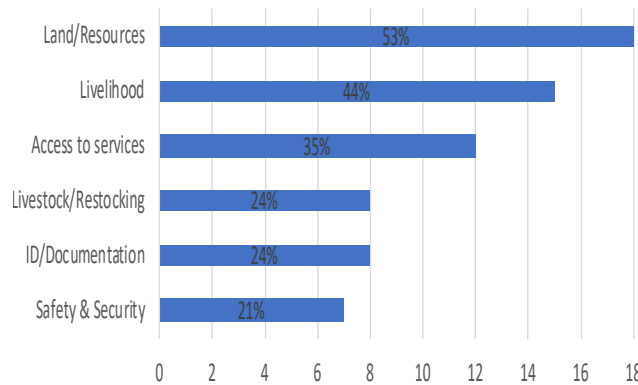


Figure 6: % Sites by support needed to return or reintegrate

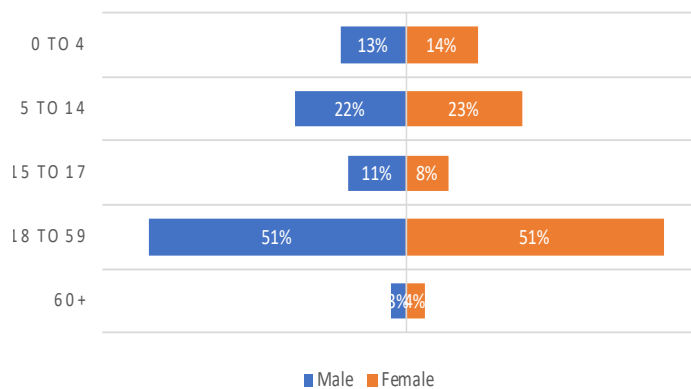


Figure 7: Demographic breakdown

| Vulnerabilities  | Individuals |
|--|-------------|
| Breastfeeding Mothers #                                | 32          |
| Child headed Households                                | 0           |
| Elderly headed Households                              | 6           |
| Elderly Persons without care givers                    | 8           |
| Members of ethnic minorities #                         | 0           |
| Members of religious minorities #                      | 0           |
| Orphaned Children                                      | 2           |
| Persons w/ Chronic Diseases/Serious Medical Conditions | 9           |
| Persons w/ Disabilities # over 18                      | 10          |
| Persons w/ Disabilities # under 18                     | 6           |
| Pregnant girls # under 18                              | 1           |
| Pregnant Women # over 18                               | 28          |
| Separated Children                                     | 3           |
| Single-female headed Households                        | 29          |
| Single-male headed Households                          | 18          |
| Unaccompanied Children                                 | 0           |

Figure 4: Voulnerable populations



## DISPLACEMENT TRACKING MATRIX (DTM) AMHARA REGION ETHIOPIA

### ROUND 12: JULY - AUGUST 2018

#### Round 11 - 12 Comparison Table

|           |                  |
|-----------|------------------|
| INCREASE  | NEW              |
| DECREASE  | UNCOVERED/CLOSED |
| NO CHANGE |                  |

| Zone                        | Woreda                       | Displacement Reason | Round 12   |              |           | % change in estimated # of HHs | Round 11   |              |          |
|-----------------------------|------------------------------|---------------------|------------|--------------|-----------|--------------------------------|------------|--------------|----------|
|                             |                              |                     | HHs        | Individuals  | Sites     |                                | HHs        | Individuals  | Sites    |
| Central Gonder              | Aykel City Administrarion    | Conflict            | 216        | 866          | 2         | 0.0%                           | 216        | 866          | 2        |
| Central Gonder              | Chilga                       | Conflict            | 31         | 154          | 1         | 0.0%                           | 31         | 154          | 1        |
| <b>Central Gonder Total</b> |                              |                     | <b>247</b> | <b>1,020</b> | <b>3</b>  | <b>0.0%</b>                    | <b>247</b> | <b>1,020</b> | <b>3</b> |
| East Gojam                  | Baso Liben                   | Climate Induced     | 72         | 284          | 1         | -7.69%                         | 78         | 309          | 1        |
| <b>East Gojam Total</b>     |                              |                     | <b>72</b>  | <b>284</b>   | <b>1</b>  | <b>-7.69%</b>                  | <b>78</b>  | <b>309</b>   | <b>1</b> |
| North Wollo                 | Gazo                         | Other               |            |              |           | -100.00%                       | 24         | 120          | 1        |
| North Wollo                 | Guba Lafto                   | Conflict            | 215        | 677          | 6         | +39.61%                        | 154        | 590          | 5        |
| North Wollo                 | Habru                        | Conflict            | 79         | 181          | 2         | 0.0%                           |            |              |          |
| North Wollo                 | Kobo                         | Conflict            | 104        | 437          | 4         | 0.0%                           |            |              |          |
| <b>North Wollo Total</b>    |                              |                     | <b>398</b> | <b>1,295</b> | <b>12</b> | <b>+123.60%</b>                | <b>178</b> | <b>710</b>   | <b>6</b> |
| Oromia                      | Bati                         | Conflict            | 107        | 565          | 3         | 0.0%                           | 107        | 557          | 3        |
| Oromia                      | Dewa Harewa                  | Conflict            | 109        | 611          | 3         | -12.10%                        | 124        | 620          | 3        |
| Oromia                      | Kemissie City Administration | Climate Induced     |            |              |           | -100.00%                       | 179        | 895          | 1        |
| <b>Oromia Total</b>         |                              |                     | <b>216</b> | <b>1,176</b> | <b>6</b>  | <b>-47.32%</b>                 | <b>410</b> | <b>2,072</b> | <b>7</b> |
| South Gonder                | Anda Bet                     | Conflict            | 51         | 181          | 1         | +4.08%                         | 49         | 175          | 1        |
| <b>South Gonder Total</b>   |                              |                     | <b>51</b>  | <b>181</b>   | <b>1</b>  | <b>+4.08%</b>                  | <b>49</b>  | <b>175</b>   | <b>1</b> |
| South Wollo                 | Mehal Sayint                 | Conflict            | 150        | 214          | 2         | +172.73%                       | 55         | 209          | 2        |



## DISPLACEMENT TRACKING MATRIX (DTM) AMHARA REGION ETHIOPIA

### ROUND 12: JULY - AUGUST 2018

| Zone                     | Woreda     | Displacement Reason | Round 12     |              |           | % change in estimated # of HHs | Round 11     |              |           |
|--------------------------|------------|---------------------|--------------|--------------|-----------|--------------------------------|--------------|--------------|-----------|
|                          |            |                     | HHs          | Individuals  | Sites     |                                | HHs          | Individuals  | Sites     |
| <b>South Wollo Total</b> |            |                     | <b>150</b>   | <b>214</b>   | <b>2</b>  | <b>+172.73%</b>                | <b>55</b>    | <b>209</b>   | <b>2</b>  |
| Wag Himra                | Dehana     | Climate Induced     | 25           | 152          | 1         | -28.57%                        | 35           | 202          | 1         |
| Wag Himra                | Dehana     | Other               | 33           | 149          | 1         | -38.89%                        | 54           | 187          | 2         |
| <b>Wag Himra Total</b>   |            |                     | <b>58</b>    | <b>301</b>   | <b>2</b>  | <b>-34.83%</b>                 | <b>89</b>    | <b>389</b>   | <b>3</b>  |
| West Gojam               | Dega Damot | Conflict            | 110          | 381          | 4         | -61.27%                        | 284          | 977          | 6         |
| West Gojam               | Sekela     | Conflict            | 75           | 338          | 1         | -25.00%                        | 100          | 430          | 1         |
| <b>West Gojam Total</b>  |            |                     | <b>185</b>   | <b>719</b>   | <b>5</b>  | <b>-51.82%</b>                 | <b>384</b>   | <b>1,407</b> | <b>7</b>  |
| West Gonder              | Metema     | Conflict            | 123          | 593          | 2         | 0.0%                           | 123          | 519          | 2         |
| <b>West Gonder Total</b> |            |                     | <b>123</b>   | <b>593</b>   | <b>2</b>  | <b>0.0%</b>                    | <b>123</b>   | <b>519</b>   | <b>2</b>  |
| Climate Induced Sum      |            |                     | 97           | 436          | 2         | -66.78%                        | 292          | 1,406        | 3         |
| Conflict Sum             |            |                     | 1,370        | 5,198        | 31        | +10.22%                        | 1,243        | 5,097        | 26        |
| Other Sum                |            |                     | 33           | 149          | 1         | -57.69%                        | 78           | 307          | 3         |
| <b>Grand Total</b>       |            |                     | <b>1,500</b> | <b>5,783</b> | <b>34</b> | <b>-7.01%</b>                  | <b>1,613</b> | <b>6,810</b> | <b>32</b> |



## DISPLACEMENT TRACKING MATRIX (DTM) AMHARA REGION ETHIOPIA ROUND 12: JULY - AUGUST 2018

### ABOUT DTM

#### DTM GLOBAL

The Displacement Tracking Matrix (DTM) is a system to track and monitor displacement and population mobility. It is designed to regularly and systematically capture, process and disseminate information to provide a better understanding of the movements and evolving needs of displaced populations, whether on site or en route. More information is available at [www.globaldtm.info](http://www.globaldtm.info).

#### DTM IN ETHIOPIA

In Ethiopia, data is collected at zone, woreda and site level. Since September 2016, twelve rounds of assessments have been completed. The DTM programme is implemented in close collaboration with the National Disaster Risk Management Commission, regional, zonal and woreda counterparts and DTMs implementing partner, the Danish Refugee Council (DRC).

#### METHODOLOGY

IOM's DTM team composed of enumerators from IOM and DRC were deployed across the country to collect the data. The process involved the following steps:

Zone level: Interviews with key informants from

the Disaster Prevention and Preparedness Office (DPPO), community representatives, and the education and health offices collect information including (among others) estimated caseload of displaced population, identification of woredas within the zone that host displaced populations, reason for displacement, time of arrival of IDPs and location of origin.

Woreda level: Information is collected from key woreda informants and includes (among others) estimated length of stay, number of displaced households and individuals at woreda level, displaced population by type of temporary settlements and approximate locations of identifiable displacement sites. The information is used to plan site assessments.

Site assessments: In-depth IDP site assessments capture detailed information through key informant interviews, direct observation and focus group discussions with male, female, elderly, children and IDP representatives. Data on available services by sector, accessibility constraints, exact type, location and name of the site, place of origin of IDPs, estimated size and type of the site and most common type of shelter are captured. Age and gender disaggregation for the site is extrapolated using a demographic calculator

tool based on the age range and sex of the household members of 20 randomly selected households from the site.

*For more information:*

*Mr. Daniel Salamon  
DTM Programme coordinator  
[dsalmon@iom.int](mailto:dsalmon@iom.int)*

*Ms. Nikki Herwanger  
DTM Information Management Officer  
[NHerwanger@iom.int](mailto:NHerwanger@iom.int)*



Humanitarian Aid  
and Civil Protection







**Boundaries**

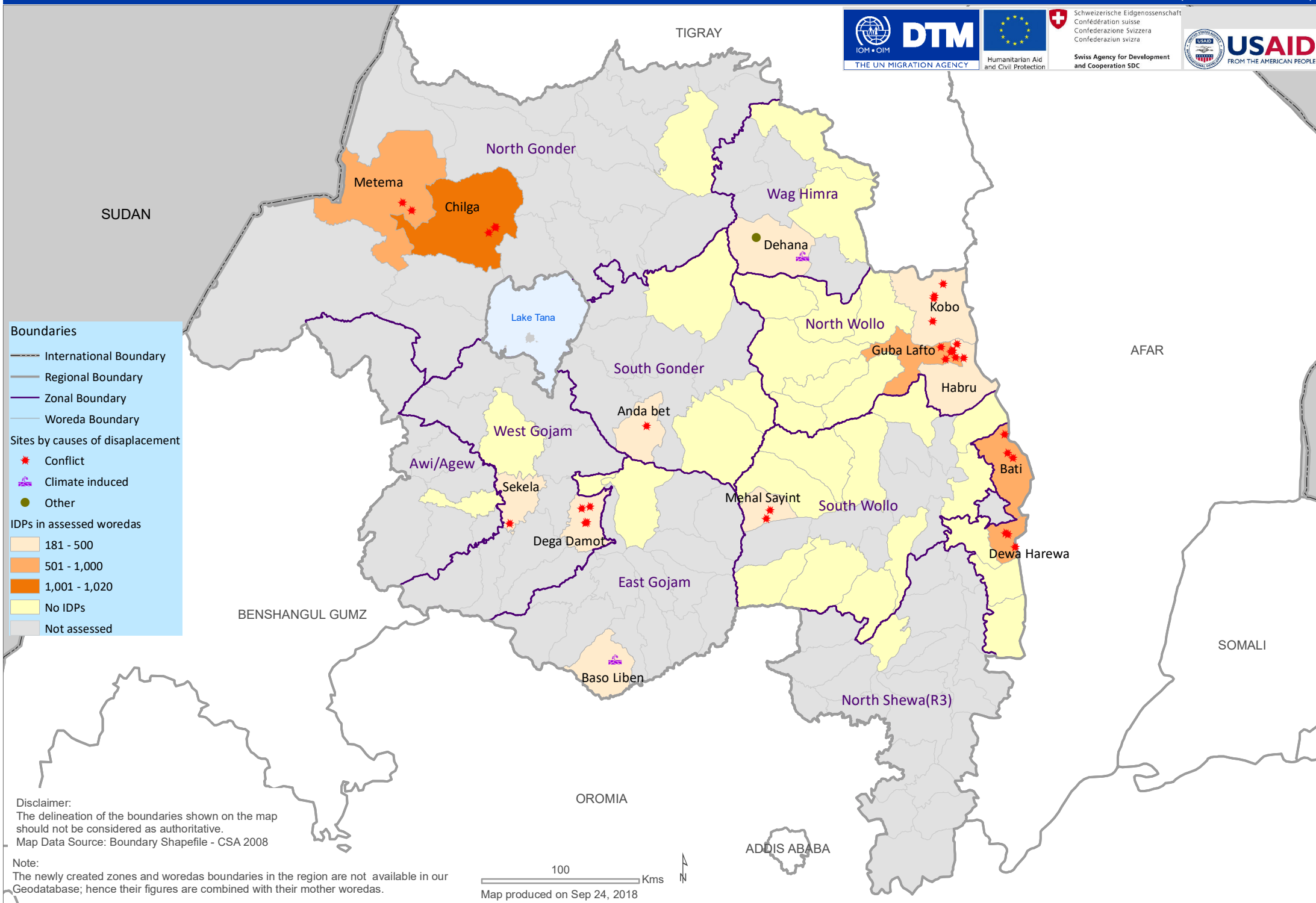
- International Boundary
- Regional Boundary
- Zonal Boundary
- Woreda Boundary

**Sites by causes of displacement**

- Conflict
- Climate induced
- Other

**IDPs in assessed woredas**

- 181 - 500
- 501 - 1,000
- 1,001 - 1,020
- No IDPs
- Not assessed

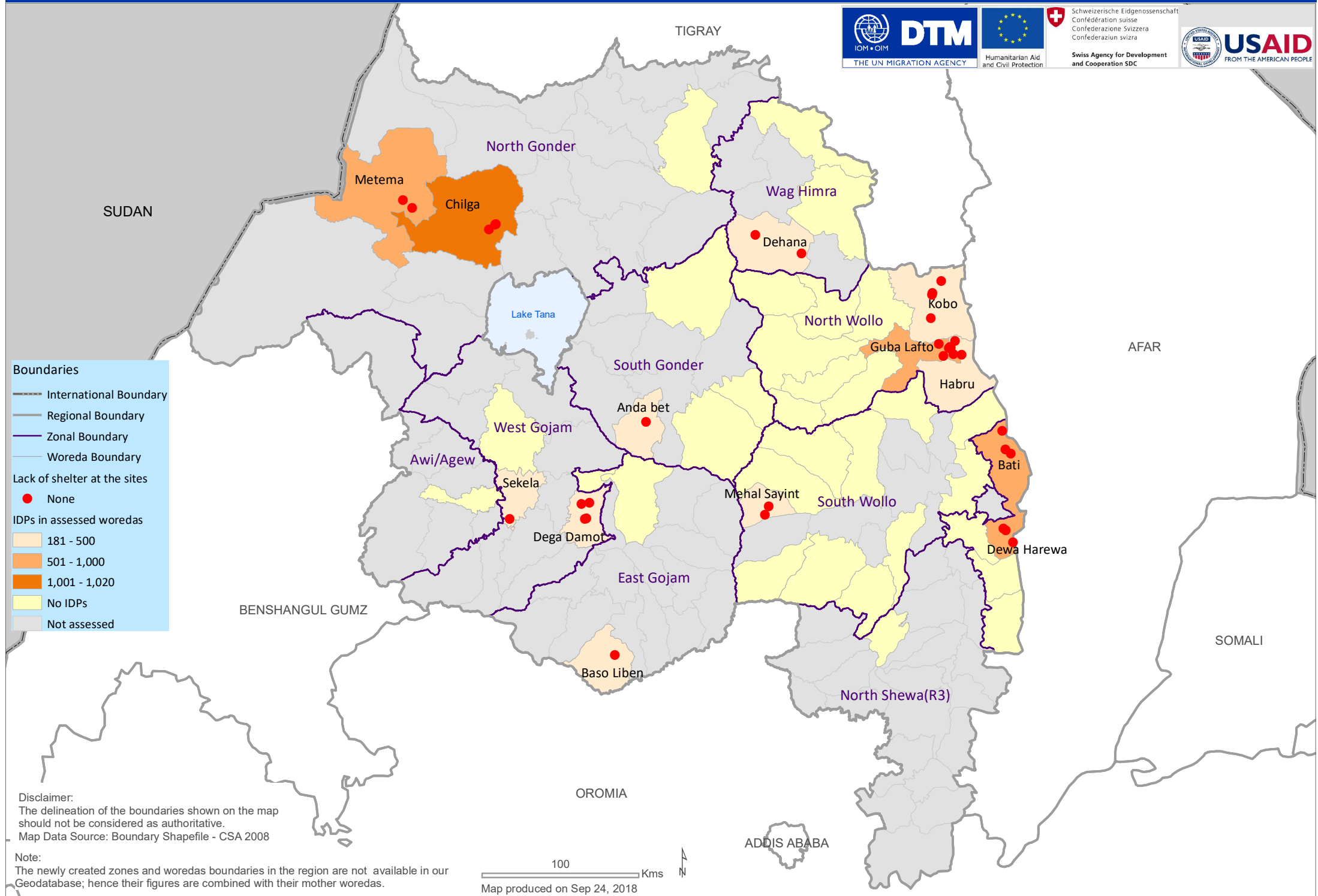


Disclaimer:  
The delineation of the boundaries shown on the map should not be considered as authoritative.  
Map Data Source: Boundary Shapefile - CSA 2008

Note:  
The newly created zones and woredas boundaries in the region are not available in our Geodatabase; hence their figures are combined with their mother woredas.



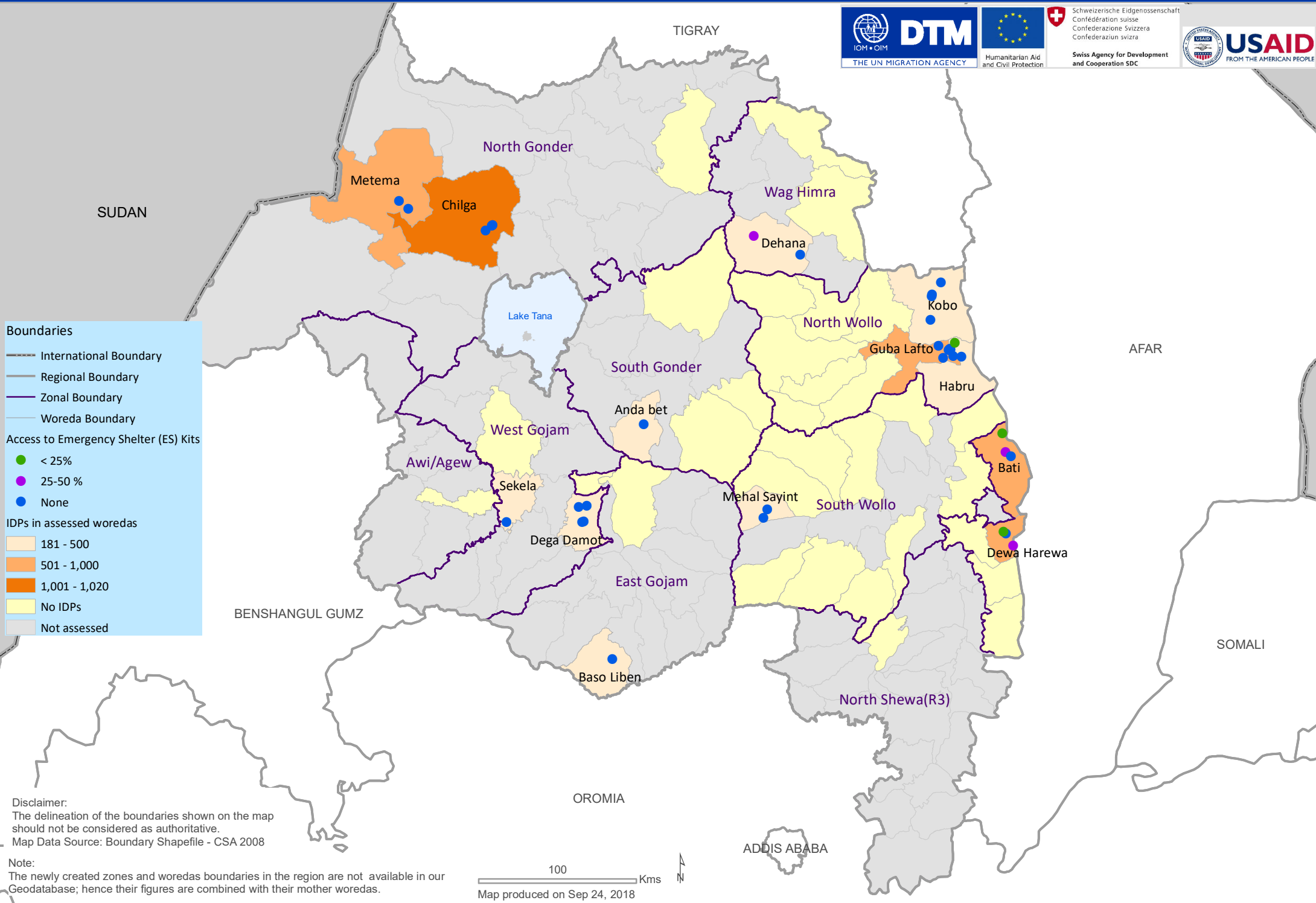
# Annex III - Amhara region households reporting lack of shelter at the sites and IDPs in assessed woredas DTM round twelve (02/07 - 31/07, 2018)



Disclaimer:  
The delineation of the boundaries shown on the map should not be considered as authoritative.  
Map Data Source: Boundary Shapefile - CSA 2008

Note:  
The newly created zones and woredas boundaries in the region are not available in our Geodatabase; hence their figures are combined with their mother woredas.





**Boundaries**

- International Boundary
- Regional Boundary
- Zonal Boundary
- Woreda Boundary

**Access to Emergency Shelter (ES) Kits**

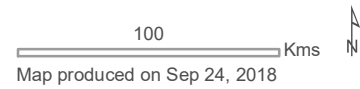
- < 25%
- 25-50 %
- None

**IDPs in assessed woredas**

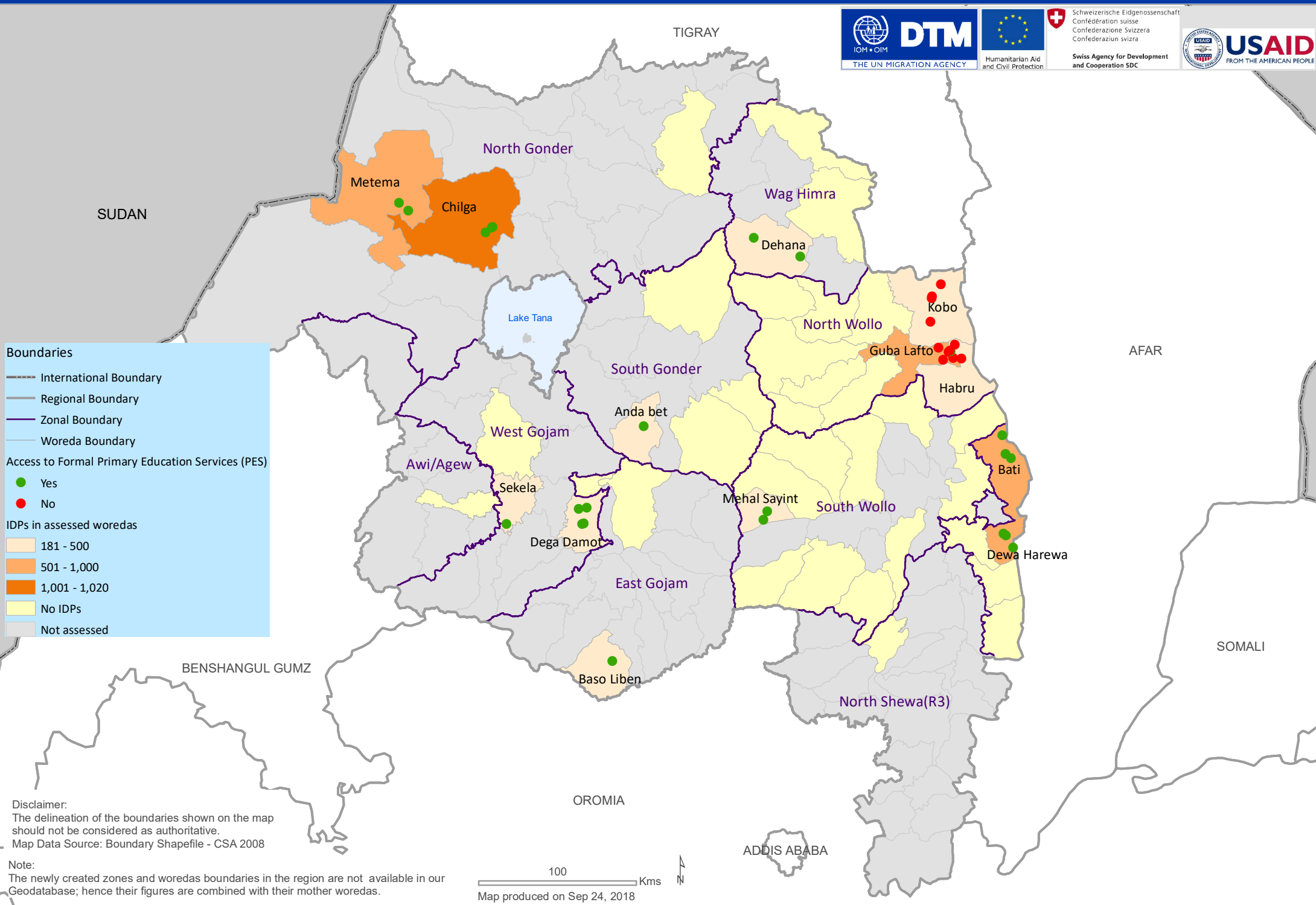
- 181 - 500
- 501 - 1,000
- 1,001 - 1,020
- No IDPs
- Not assessed

Disclaimer:  
The delineation of the boundaries shown on the map should not be considered as authoritative.  
Map Data Source: Boundary Shapefile - CSA 2008

Note:  
The newly created zones and woredas boundaries in the region are not available in our Geodatabase; hence their figures are combined with their mother woredas.

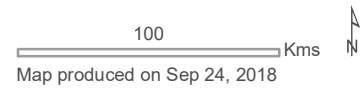


ADDIS ABABA



Disclaimer:  
The delineation of the boundaries shown on the map should not be considered as authoritative.  
Map Data Source: Boundary Shapefile - CSA 2008

Note:  
The newly created zones and woredas boundaries in the region are not available in our Geodatabase; hence their figures are combined with their mother woredas.



# Annex V - Amhara region sites reporting access to water and IDPs in assessed woredas DTM round twelve (02/07 - 31/07, 2018)



**Boundaries**

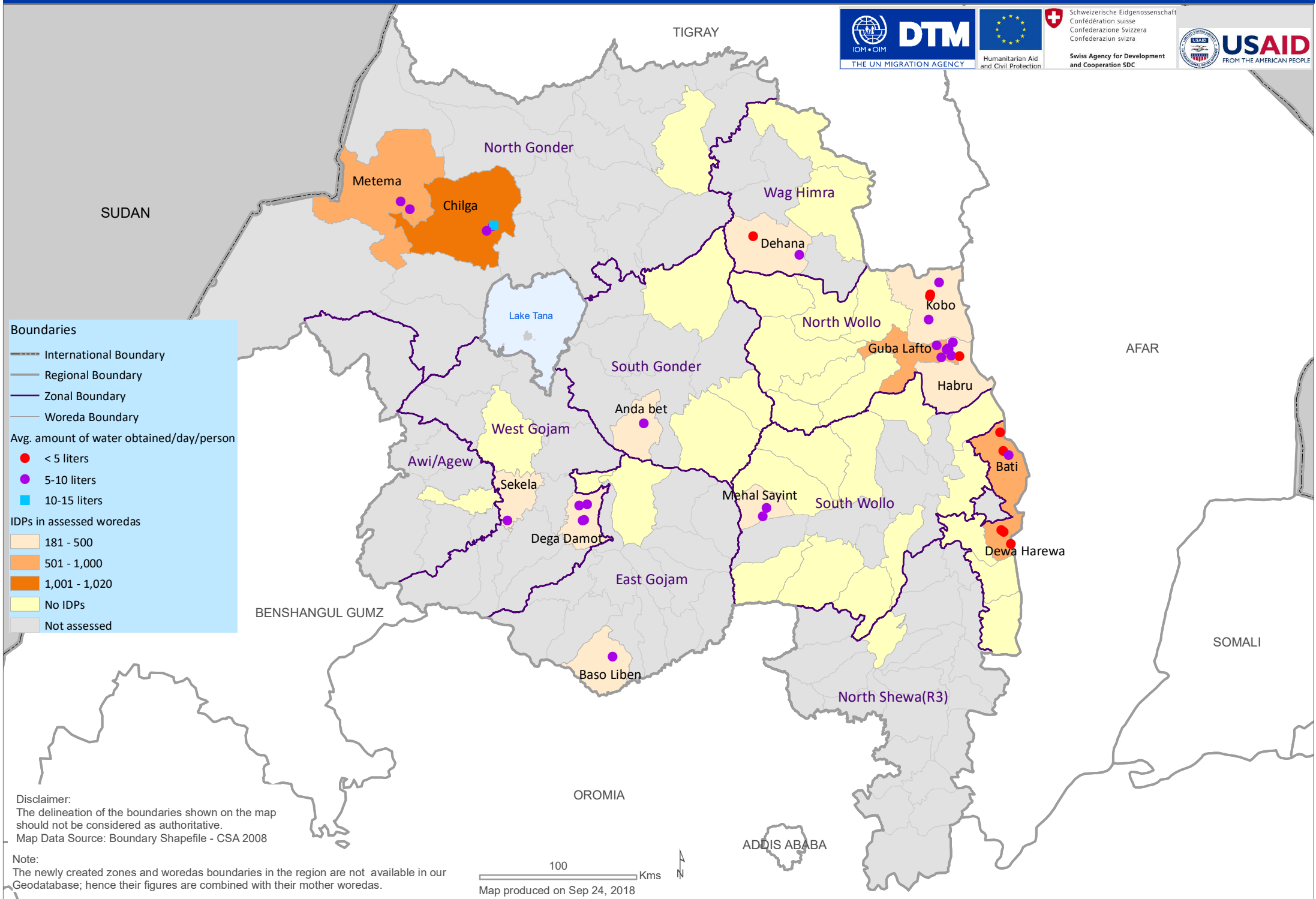
- International Boundary
- Regional Boundary
- Zonal Boundary
- Woreda Boundary

**Avg. amount of water obtained/day/person**

- < 5 liters
- 5-10 liters
- 10-15 liters

**IDPs in assessed woredas**

- 181 - 500
- 501 - 1,000
- 1,001 - 1,020
- No IDPs
- Not assessed

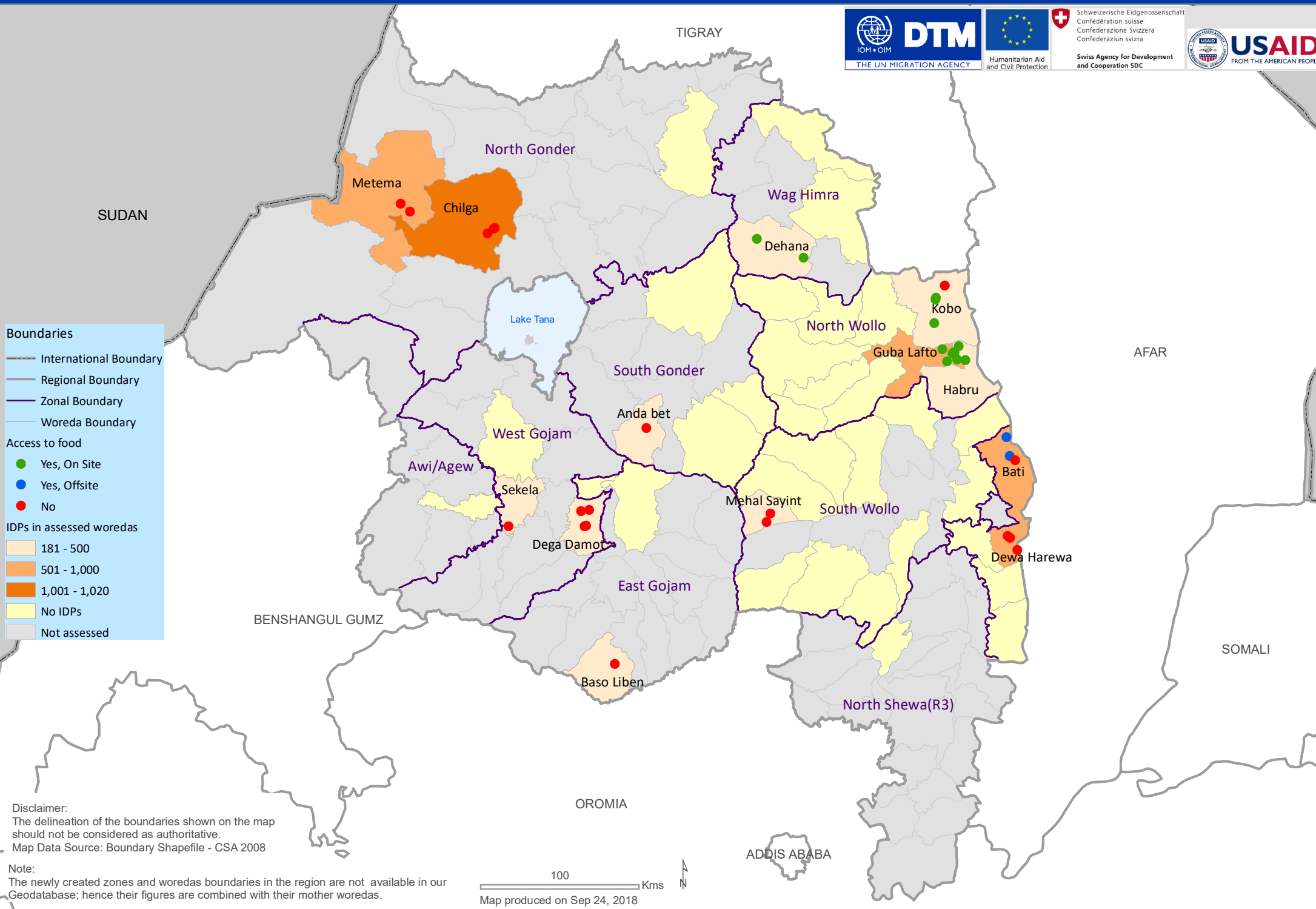


Disclaimer:  
The delineation of the boundaries shown on the map should not be considered as authoritative.  
Map Data Source: Boundary Shapefile - CSA 2008

Note:  
The newly created zones and woredas boundaries in the region are not available in our Geodatabase; hence their figures are combined with their mother woredas.



# Annex VI - Amhara region sites reporting access to food and IDPs in assessed woredas DTM round twelve (02/07 - 31/07, 2018)



Disclaimer:  
The delineation of the boundaries shown on the map should not be considered as authoritative.  
Map Data Source: Boundary Shapefile - CSA 2008

Note:  
The newly created zones and woredas boundaries in the region are not available in our Geodatabase; hence their figures are combined with their mother woredas.





**Boundaries**

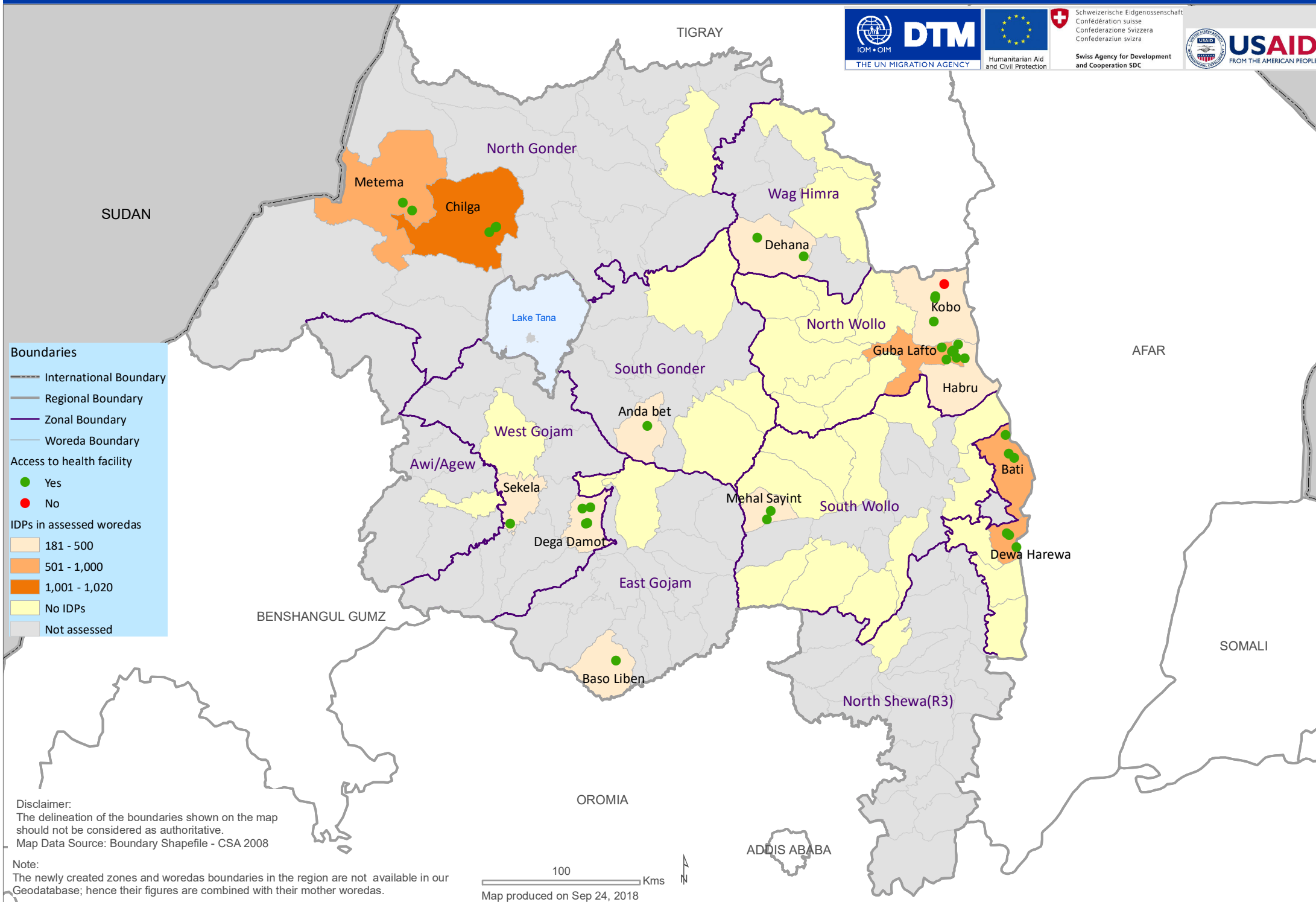
- International Boundary
- Regional Boundary
- Zonal Boundary
- Woreda Boundary

**Access to health facility**

- Yes
- No

**IDPs in assessed woredas**

- 181 - 500
- 501 - 1,000
- 1,001 - 1,020
- No IDPs
- Not assessed



Disclaimer:  
The delineation of the boundaries shown on the map should not be considered as authoritative.  
Map Data Source: Boundary Shapefile - CSA 2008

Note:  
The newly created zones and woredas boundaries in the region are not available in our Geodatabase; hence their figures are combined with their mother woredas.





**Boundaries**

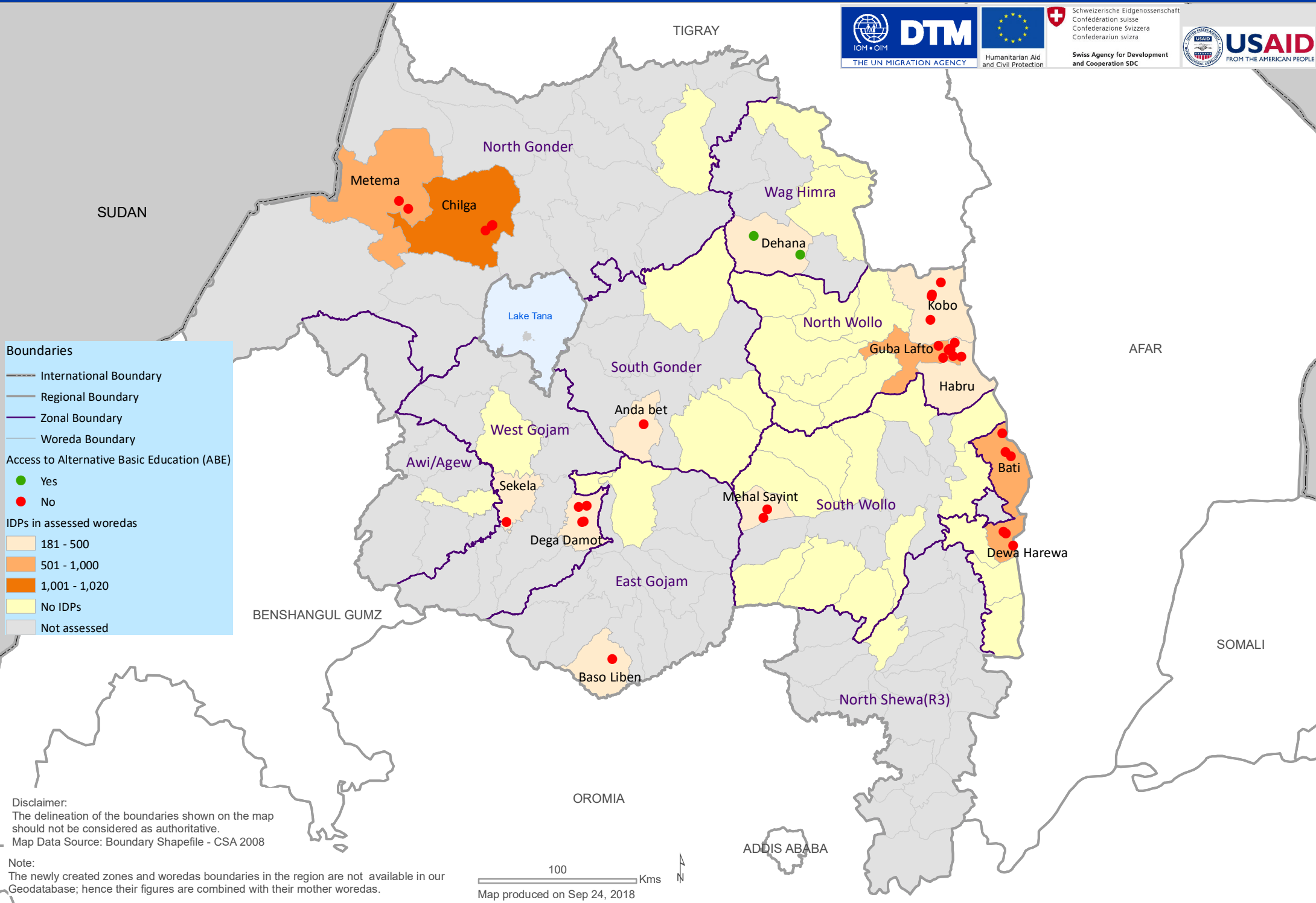
- International Boundary
- Regional Boundary
- Zonal Boundary
- Woreda Boundary

**Access to Alternative Basic Education (ABE)**

- Yes (Green dot)
- No (Red dot)

**IDPs in assessed woredas**

- 181 - 500 (Light orange)
- 501 - 1,000 (Orange)
- 1,001 - 1,020 (Dark orange)
- No IDPs (Yellow)
- Not assessed (Grey)



Disclaimer:  
The delineation of the boundaries shown on the map should not be considered as authoritative.  
Map Data Source: Boundary Shapefile - CSA 2008

Note:  
The newly created zones and woredas boundaries in the region are not available in our Geodatabase; hence their figures are combined with their mother woredas.

