



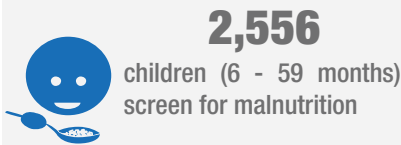
Displacement Tracking Matrix - Nigeria Emergency Tracking Tool (ETT) - Quarterly (January - March 2020)

DTM Emergency Tracking Tool (ETT) is deployed to track and provide up-to-date information on sudden displacement and other population movements

MOVEMENTS



NEW ARRIVALS SCREENING BY NUTRITION PARTNERS



MUAC category of screened children



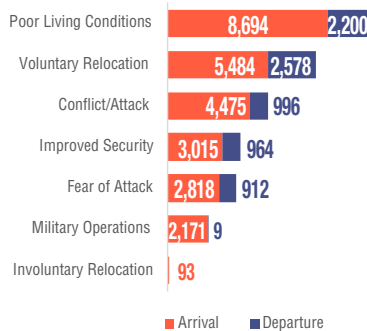
From January to March 2020, a total of 33,409 movements were recorded, composed of 26,750 arrivals and 7,659 departures. Arrivals were recorded at locations in Askira/Uba, Bama, Biu, Chibok, Damboa, Dikwa, Gwoza, Hawul, Jere, Konduga, Mafa, Maiduguri Metropolitan Council, Mobbar, Monguno and Ngala Local Government Areas (LGAs) of Borno state. Arrivals were also recorded in Demsa, Fufore, Girei, Gombi, Hong, Madagali, Maiha, Mayo-Belwa, Michika, Mubi North, Mubi South, Numan, Song, Yola North, and Yola South LGAs of Adamawa state.

Departures were recorded in Askira/Uba, Bama, Chibok, Dikwa, Gwoza, Hawul and Kala/Balge LGAs of Borno state; Demsa, Fufore, Girei, Gombi, Hong, Madagali, Maiha, Michika, Mubi North, Mubi South, Numan, Song, Yola North and Yola South LGAs of Adamawa state also recorded departures.

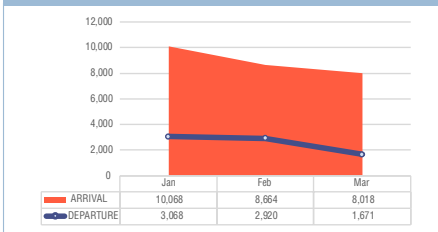
Out of the 33,409 movements recorded, 4,442 movements were recorded from neighbouring countries which composed of 3,725 IDPs and 717 Returnees. Of these arrivals, 3,903 were from Cameroon, 401 from Republic of Niger and 138 from Chad. Sixty-two per cent of the new arrivals reported to have relocated due to poor living conditions, 36 per cent relocated voluntarily, 1 per cent relocated due to fear of attack, and the remaining 1 per cent relocated due to conflict/attack and improved security.

ETT assessments identified the following movement triggers: poor living conditions (31.7%), voluntary relocation (23.4%), conflict/attack (15.9%), improved security (11.6%), fear of attack (10.8%), military operations (6.3%) and involuntary relocation (0.3%).

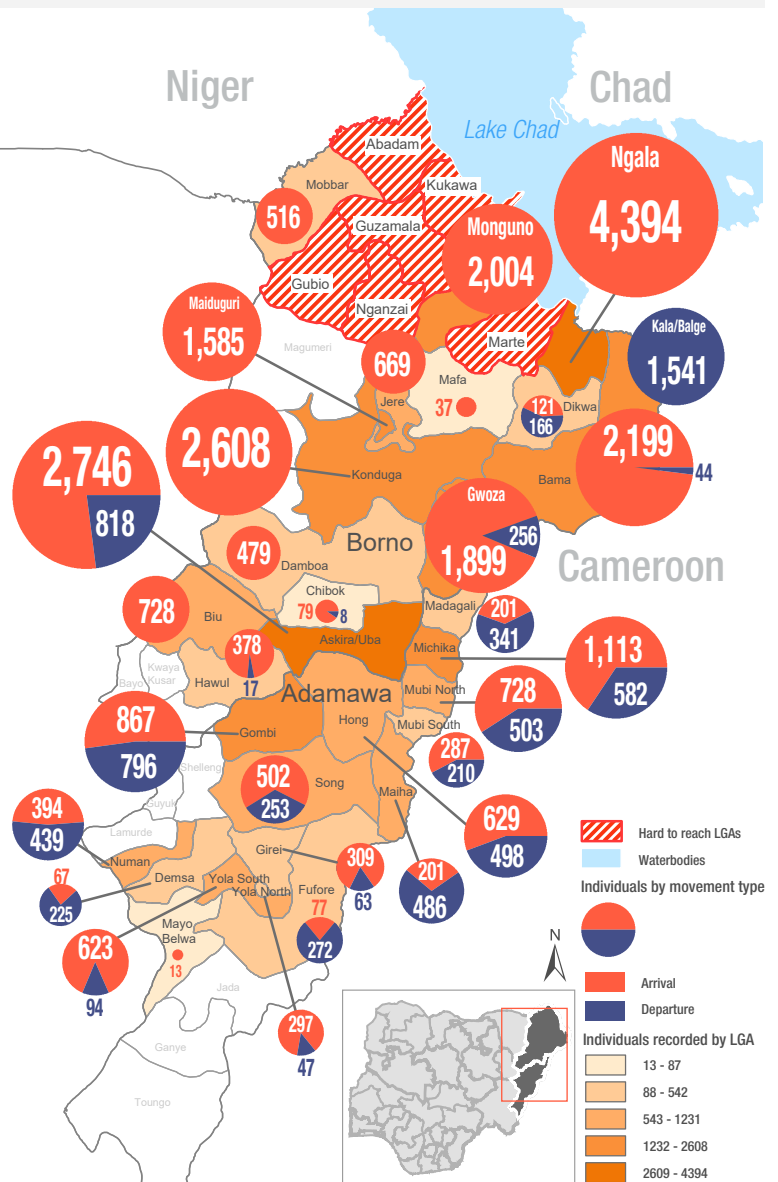
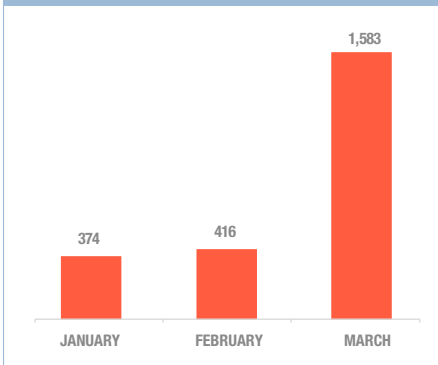
NUMBER OF INDIVIDUALS BY MOVEMENT TRIGGER



NUMBER OF ARRIVALS AND DEPARTURES BY MONTH

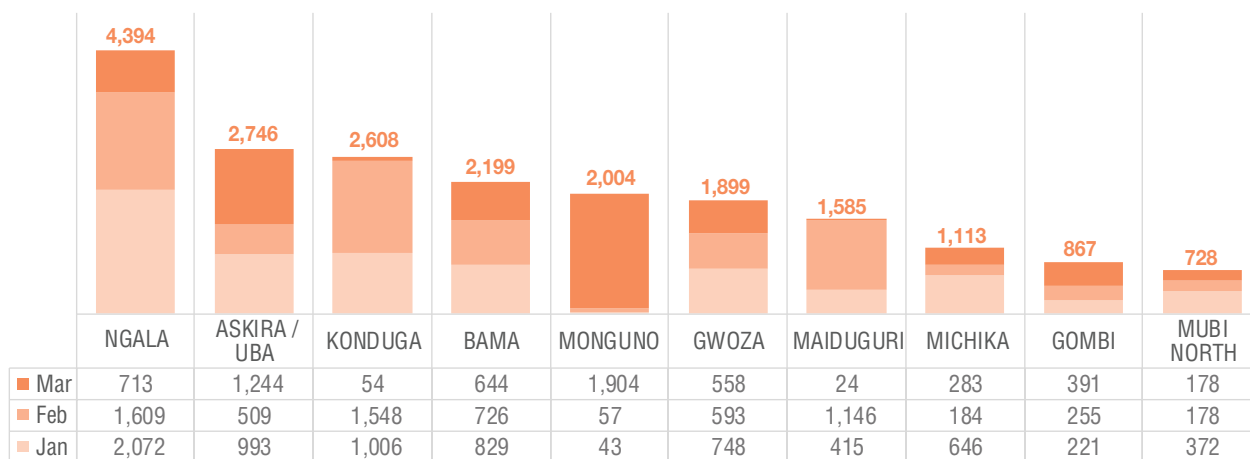


NUMBER OF ARRIVALS FROM INACCESSIBLE AREAS

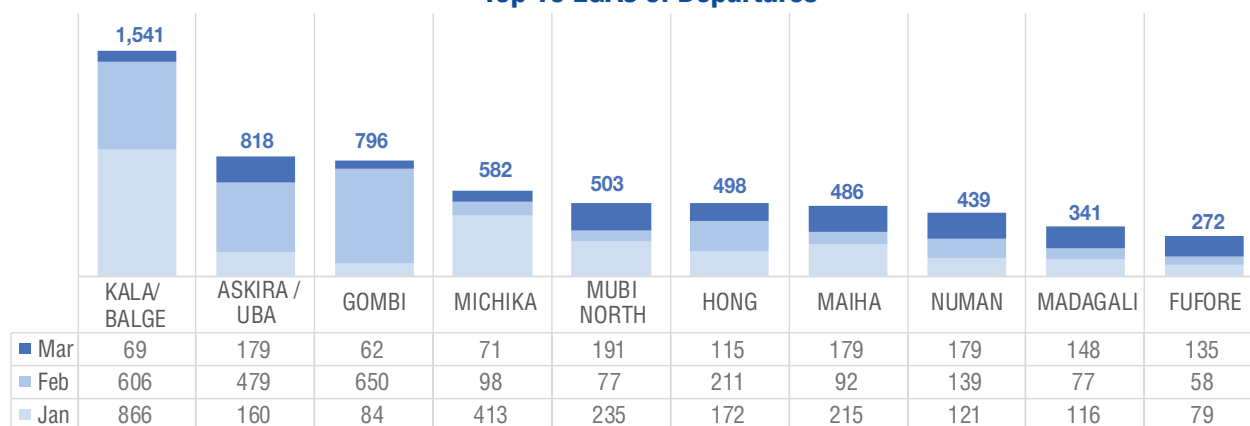


The depiction and use of boundaries, geographic names, and related data shown on maps and included in this report are not warranted to be error free nor do they imply judgment on the legal status of any territory, or any endorsement or acceptance of such boundaries by IOM.

Top 10 LGAs of Arrivals



Top 10 LGAs of Departures

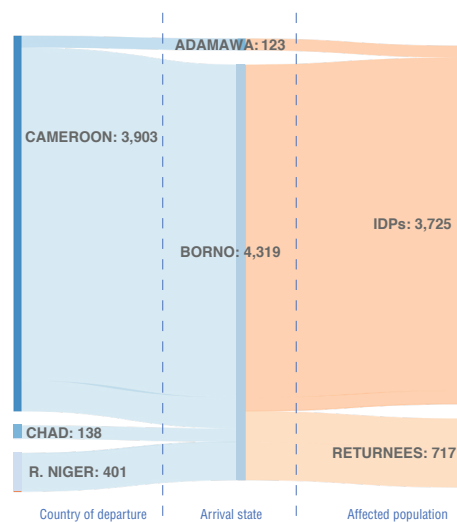


Cross-border Movements

- 4,442** cross-border movements were recorded
- 88%** arrived from Cameroon
- 9%** arrived from Niger
- 3%** arrived from Chad

84% returned as IDPs

16% returned to their original abodes



Emergency Tracking Tool Reports Released on Movements Tracked within January to March 2020

Report 153 (6 - 12 January 2020)	Report 158 (10 - 16 February 2020)	Report 163 (16 - 22 March 2020)
Report 154 (13 - 19 January 2020)	Report 159 (17 - 23 February 2020)	Report 164 (23 - 29 March 2020)
Report 155 (20 - 26 January 2020)	Report 160 (24 February - 1 March 2020)	Report 165 (30 March - 5 April 2020)
Report 156 (27 January - 2 February 2020)	Report 161 (2 - 8 March 2020)	
Report 157 (3 - 9 February 2020)	Report 162 (9 - 15 March 2020)	

Click Report title to view the published report & details on Google map

Note: This report includes few movements captured after the reports were published. MUAC data: as provided by UNICEF

