

Top LGAs with variation	
Round 37	Round 36

Bade
 28,274 +6,751 IDPs
 21,523

Yunusari
 8,256 +6,504 IDPs
 1,752

Geidam
 3,784 -12,323 IDPs
 16,107

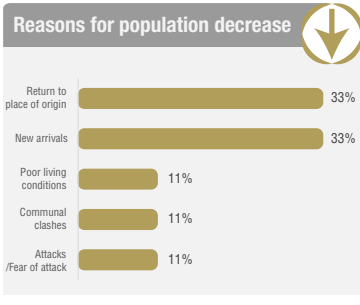
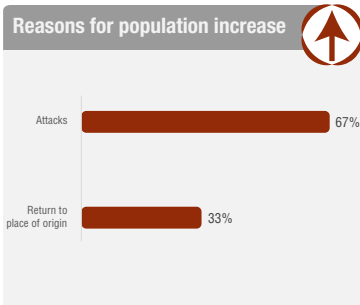
Jalingo
 8,287 -6,990 IDPs
 15,277

Bade: The increase of the IDP population in Bade LGA was a result of new arrivals from Geidam and Yunusari LGAs due to continued attacks by NSAGs on the communities in the mentioned LGAs.

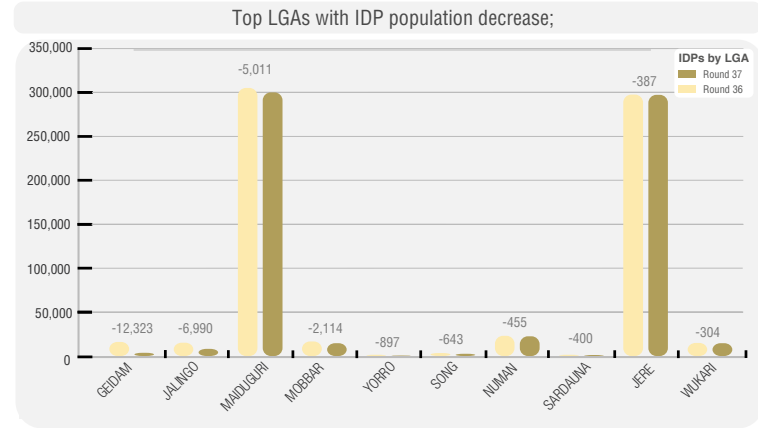
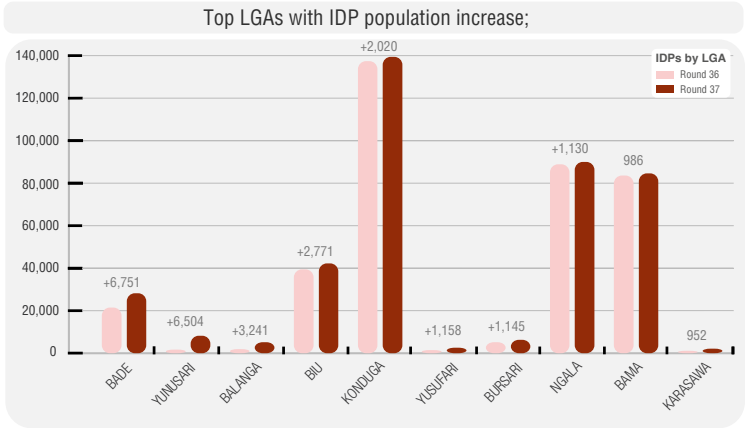
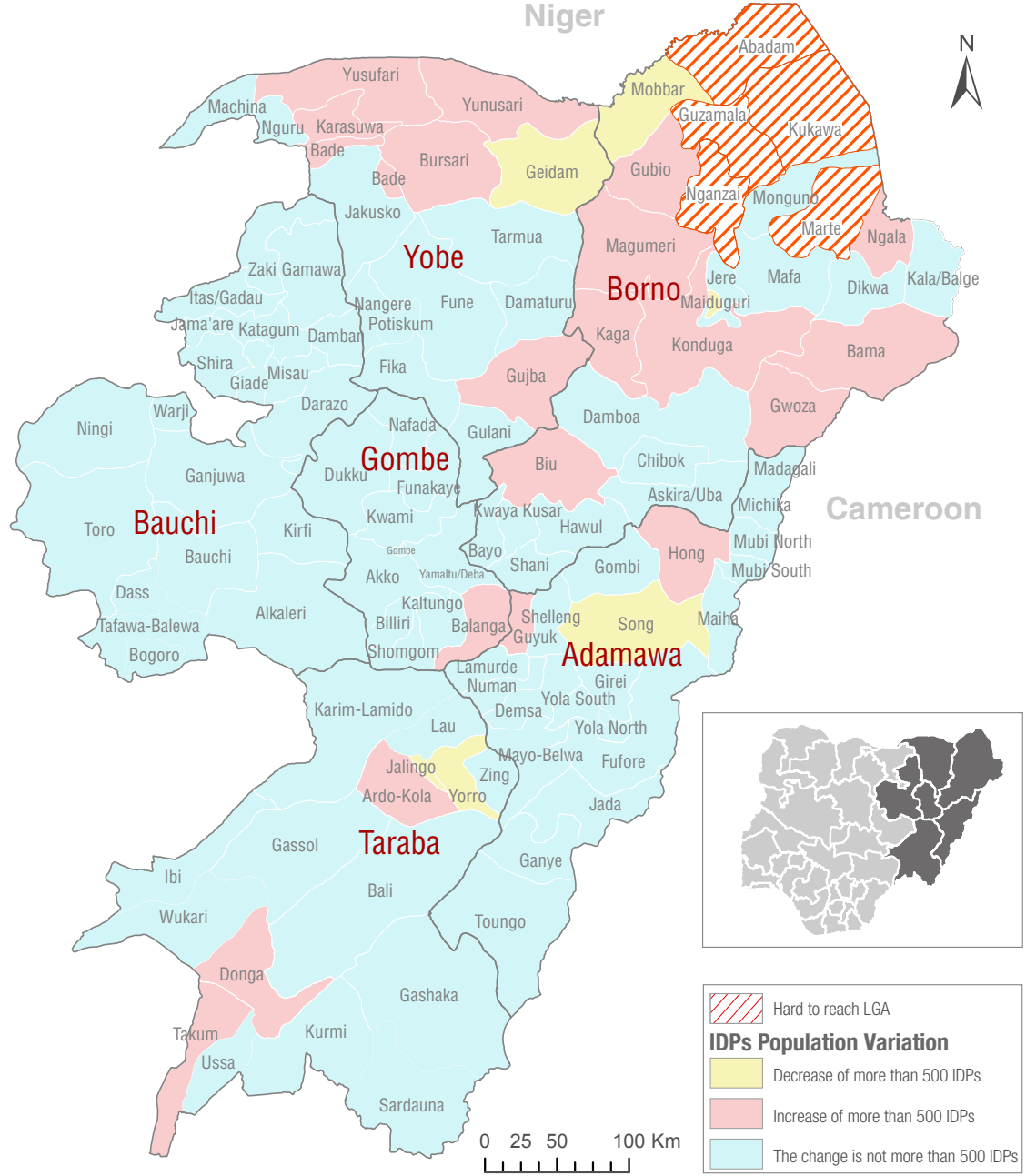
Yunusari: The IDP population increased as a result of the attacks by NSAGs in the wards Bultuwa/Mar/Yaro and Mairari within Yunusari and the influx of IDPs from Geidam LGA as a result of the attack on Geidam town.

Geidam: The IDP population in Geidam LGA decreased as a result of attacks launched on the community by NSAGs. Many IDPs fled to the neighbouring LGA Yunusari.

Jalingo: The IDP population decreased because numerous IDPs have returned to their villages of origin as the security situation is relatively calm at the moment.



Abadam, Guzamala, Kukawa, Marte and Nganzai LGAs were inaccessible during Round 37 assessments because of the recent attacks by Non-State Armed Groups (NSAGs).



"When quoting, paraphrasing, or in any other way using the information mentioned in this report, the source needs to be stated appropriately as follows: "Source: Displacement Tracking Matrix (DTM) of the International Organization for Migration (IOM), August 2021"