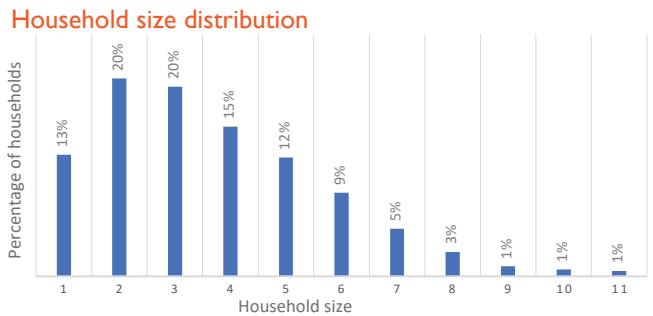
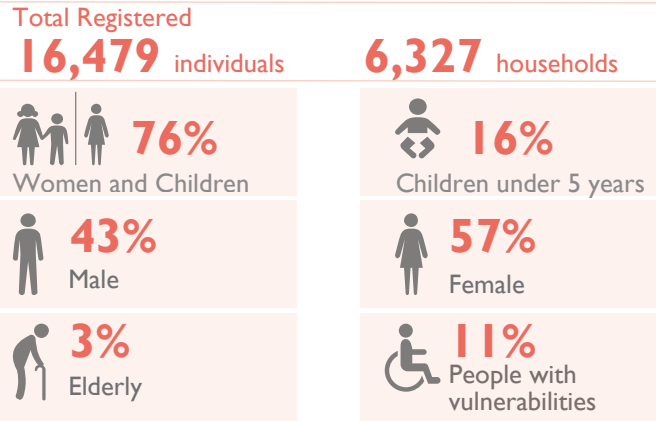
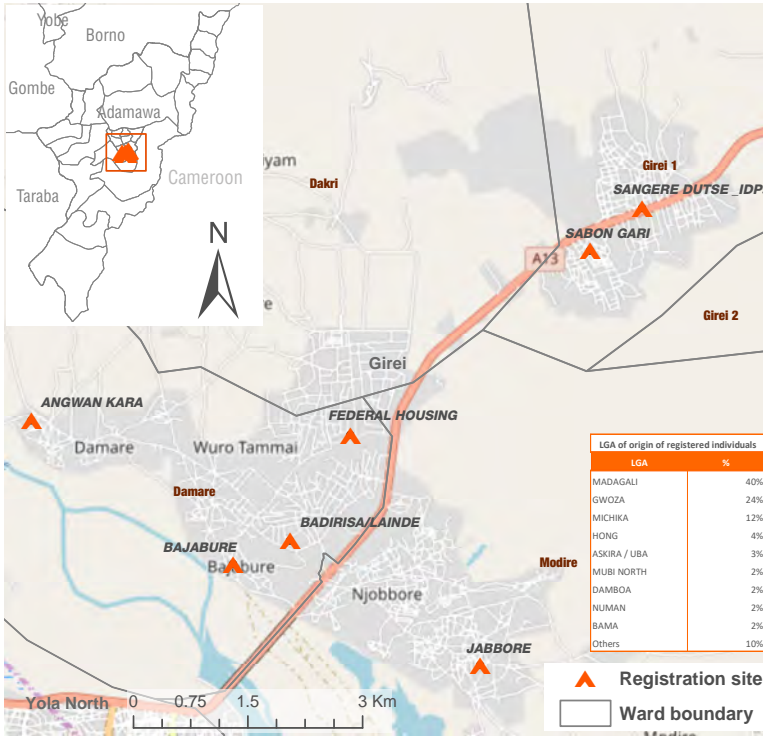


## Biometric Registration | 4 December 2018



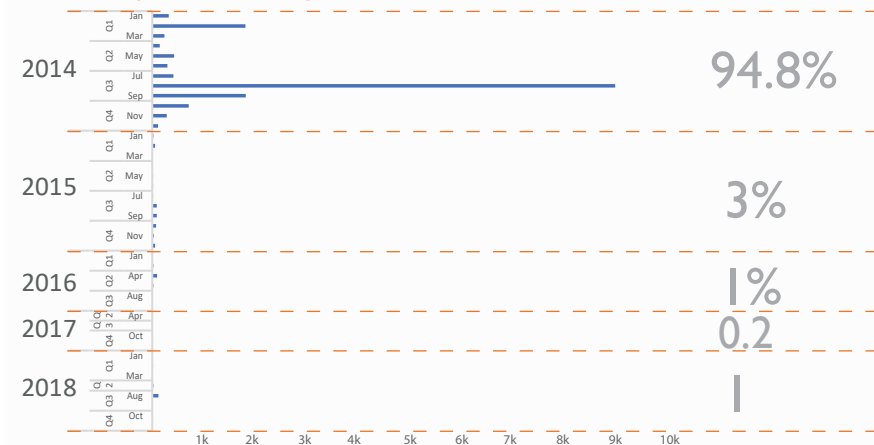
Recently concluded Biometric Registration in Girei Local Government Area (LGA), within the period of 13 November – 28 November 2018, has brought the total number of Returnees and Displaced persons in Girei (LGA) to 16,476 individuals (6,327 households). The average family size within the location is 3, with 33 per cent of families comprising of 1 - 2 members; 35 per cent comprising of 3 - 4 members; 21 per cent comprising of 5-6 members; 8 per cent comprising of 7-8 members; and 3 per cent comprising of 9 and above members.

During the registration exercise, the enumerators collected vulnerability data to identify individuals who may require additional humanitarian assistance. Out of the total population registered, 11 per cent are people experiencing at least one of the vulnerabilities (shown below). Vulnerability figures are obtained through interviews with heads of households, in the presence of other family members.

40 per cent of the IDPs in Girei were displaced from Madagali (LGA), 24 per cent from Gwoza (LGA), 12 per cent from Michika (LGA), 4 per cent from Hong (LGA), 3 per cent from Askira/Uba (LGA), 2 per cent from Mubi North, Numan, Bama, Damboa (LGA) respectively; 1 per cent from Demsa, Glrei, Gomi, Mubi South, Maiduguri, Dامتuru and Gujba (LGA) respectively.

Location Details			Total				Male				Female			
Place of registration	Location Type	SSID	HH	Ind	Male	Female	0-4 y	5-17 y	18-59 y	60+ y	0-4 y	5-17 y	18-59 y	60+ y
ANGWAN KARA	CAMP	AD_S040	653	1,710	845	865	123	333	353	36	128	318	390	29
BADIRISA/LAINDE	HOST COMMUNITY	AD_H068	1,371	3,565	1,552	2,013	286	662	580	24	257	645	1,045	66
BAJABURE	HOST COMMUNITY	AD_H064	488	1,376	557	819	112	267	164	14	111	277	409	22
FEDERAL HOUSING	HOST COMMUNITY	AD_H063	706	1,818	784	1,034	158	347	265	14	143	348	513	30
JABBORE	HOST COMMUNITY	AD_H082	1,241	3,218	1,382	1,836	251	648	445	38	238	614	915	69
SABON GARI	HOST COMMUNITY	AD_H071	1,813	4,592	1,900	2,692	389	860	604	47	380	859	1,380	73
SANGERE DUTSE_IDPs	HOST COMMUNITY	AD_H073	55	200	81	119	19	41	19	2	17	49	53	-
<b>Grand Total</b>			<b>6,327</b>	<b>16,479</b>	<b>7,101</b>	<b>9,378</b>	<b>1,338</b>	<b>3,158</b>	<b>2,430</b>	<b>175</b>	<b>1,274</b>	<b>3,110</b>	<b>4,705</b>	<b>289</b>
<b>Percentage</b>				<b>100%</b>	<b>43%</b>	<b>57%</b>	<b>8%</b>	<b>19%</b>	<b>15%</b>	<b>1%</b>	<b>8%</b>	<b>19%</b>	<b>29%</b>	<b>2%</b>

### Period of Displacement of Registered Individuals



### Vulnerabilities

11 per cent of the population are vulnerable

