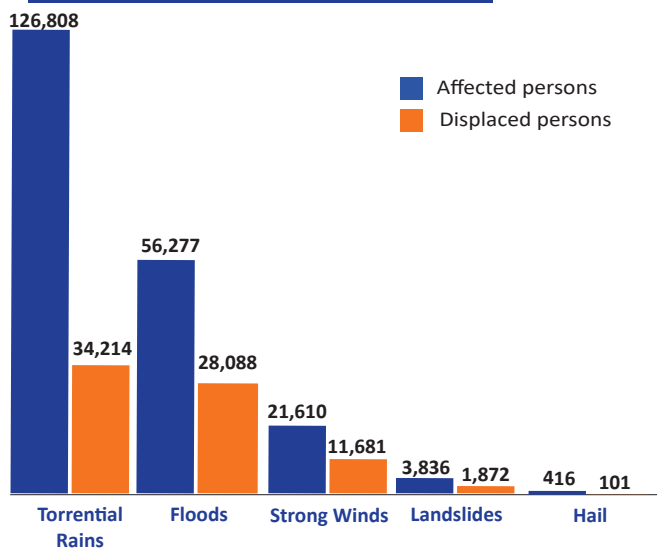


393 Natural Disasters

were tracked by DTM emergency tracking teams

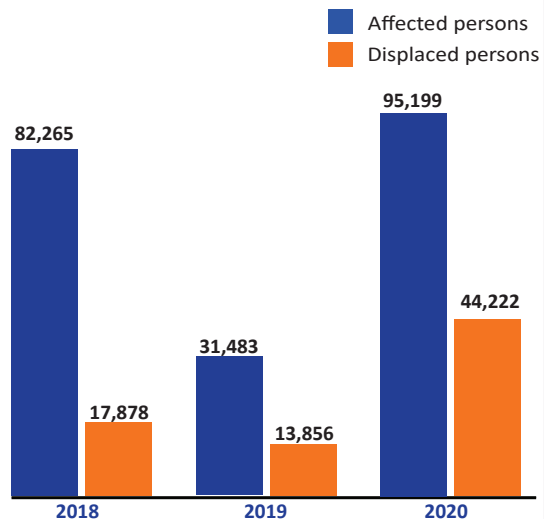
Affected and Displaced Persons
by main types of natural disaster



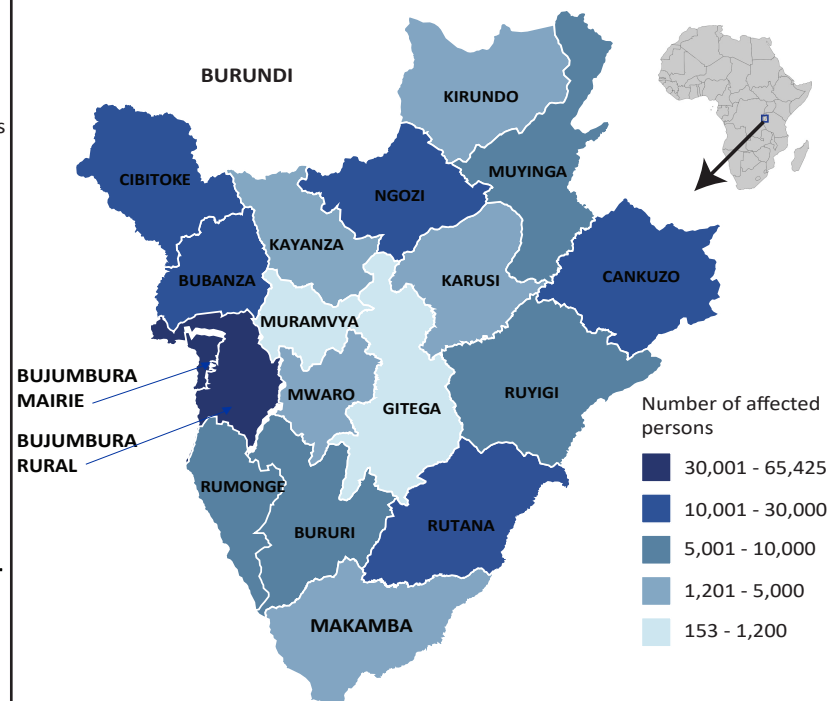
Over the past three years, natural disasters, in particular torrential rains, floods and strong winds that occurred in Burundi affected 208,947 persons, including 75,956 individuals that have been displaced. During this period, the main affected provinces were Bujumbura Rural (65,425 affected persons), Bujumbura Mairie (32,472 affected persons) and Rutana (18,818 affected persons). Alongside the severe human impact, these natural disasters destroyed many houses and infrastructures in the country.

208,947 affected persons 75,956 displaced persons

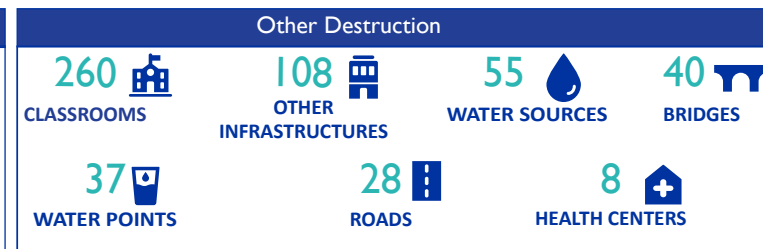
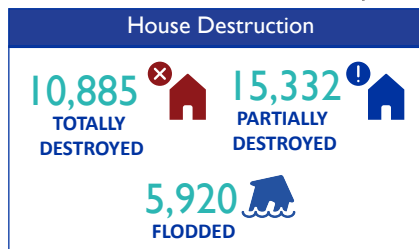
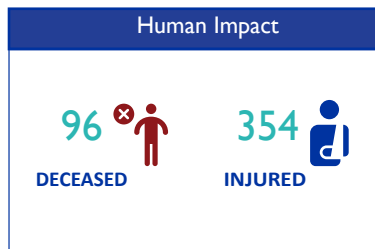
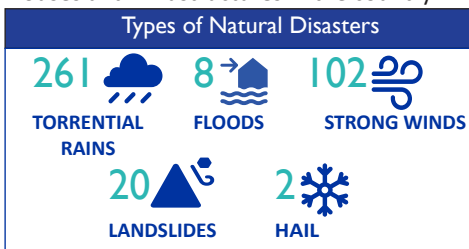
Affected and Displaced Persons by Period



Natural Disasters Affected Population by province



© IOM Burundi - Reference Map (December 2020)



METHODOLOGY

The Emergency Event Tracking (EET) tool aims to collect information on large and sudden population movements. Information is collected by enumerators (Red Cross volunteers) through Key Informant Interviews (KII) or direct observation. Two enumerators per commune are in charge of emergency surveillance and report any emergency events that occurred within 24 hours to the supervisor. After verification, the emergency events are shared with partners through the Whatsapp group (to inform partners on time for any emergency assistance). Every monday, a weekly dashboard is compiled and published regarding the emergency events which have taken place from Sunday to Saturday of the previous week (only severe events are published). These dashboards may be found at <https://displacement.iom.int/burundi>. This overview provides information on natural disasters which occurred from January 2018 to December 2020.