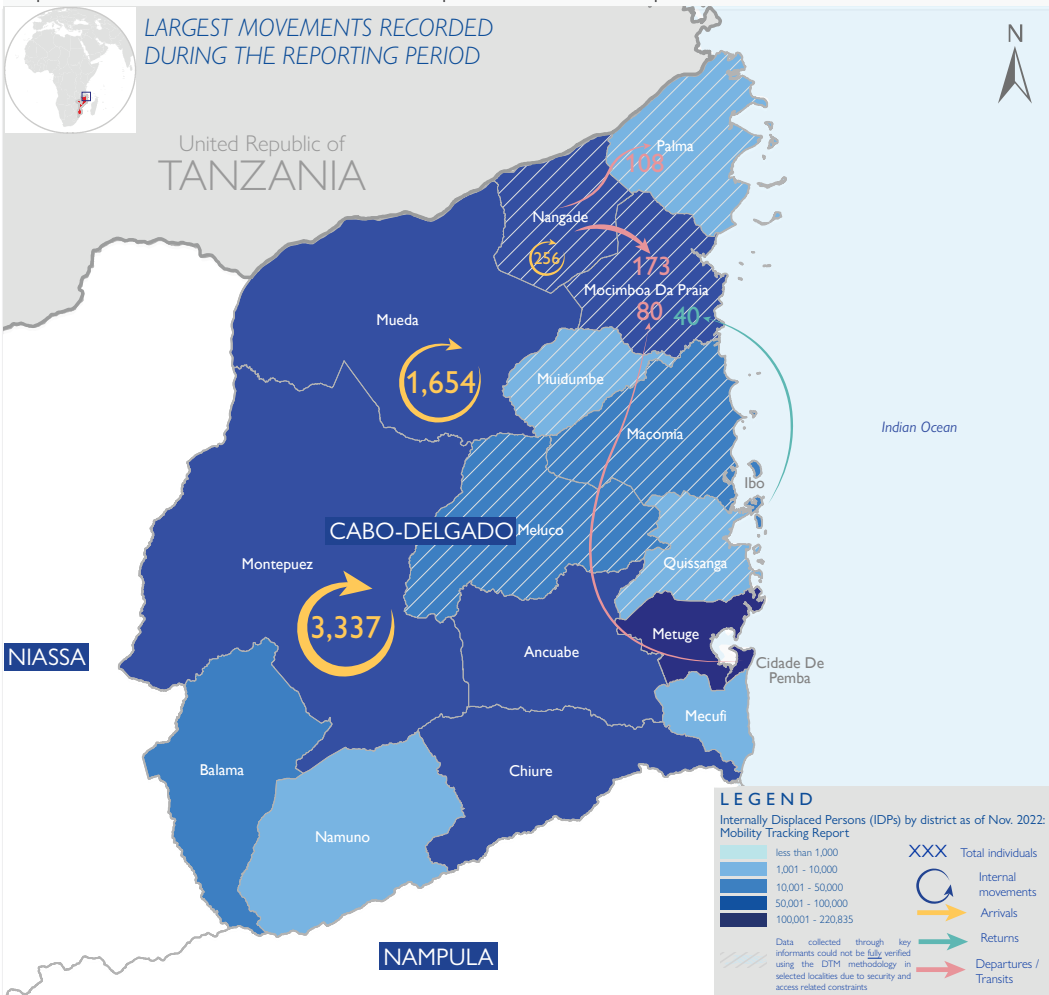


During the reporting period (01 to 07 February 2023), a total of 41 movements were recorded - 11 arrivals (5,071 individuals), 25 departures (757 individuals), and 5 returns (64 individuals). The largest arrival movements were recorded in Montepuez (5,071 individuals), and Mueda (1,654 individuals). The largest departure movements were recorded in Nangade (546 individuals), and Cidade de Pemba (80 individuals). The largest return movement was observed from Ibo to Mocimboa da Praia (40 individuals). Of the total population, 87 per cent of mobile groups were displaced for the first time, 4 per cent for a second time and 9 per cent were displaced at least three times.



KEY FIGURES

5,892

PEOPLE ON THE MOVE DURING THE REPORTING PERIOD

64

OF THE TOTAL IDPs RETURNED TO THEIR PLACE OF ORIGIN

42%

OF PEOPLE ON THE MOVE REPORTED ARE CHILDREN

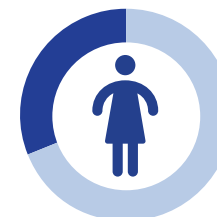
41%

OF THE REPORTED PEOPLE ON THE MOVE ARE LIVING WITH THE HOST COMMUNITY

118

ELDERLY WERE REPORTED, REPRESENTING THE LARGEST VULNERABLE GROUP

DEMOGRAPHICS



Women
1,796
31%



Men
1,605
27%



Children
2,491
42%

MAIN REPORTED NEEDS



MAIN DISTRICTS OF ORIGIN (for arrivals)



DEFINITION OF TERMINOLOGIES

PEOPLE ON THE MOVE: Indicative individual movements triggered by conflict/attacks, fear of attacks, search of food/livelihoods, access to humanitarian assistance, natural disaster, intended returns, relocation or family reunification.

TYPES OF MOVEMENT FLOWS: To capture the dynamic characteristics of migration, the ETT categorizes 4 types of movement flows: arrivals, departures and transits and returns. Each category is dependent on the recorded triggers of movement, duration of movement as well as movement intentions.

- **ARRIVALS:** Individuals arriving at the point of assessment with intentions to stay more than 1 month in current location
- **TRANSITS:** Individuals arriving at the point of assessment, with an intention to spend less than one month at current location.
- **DEPARTURES:** Individuals leaving the point of assessment to another location.
- **RETURNS:** Individuals returning to their locality of origin from previous place of displacement. Please note, the returnee category, for the purpose of DTM data collection, is restricted to individuals who returned to the Location/-Bairro of their habitual residence, or an adjacent area based on a free decision. Mozambique displaced persons having returned to districts of origin without having reached their locality of origin are still displaced and as such not counted in the returnee category.

VULNERABILITIES BY LOCALITY (ARRIVALS)

District/Locality/Site	Total number of households	Total number of individuals	Unaccompanied / separated children	Pregnant women	Elderly (60 years +)	People with disabilities
Montepuez	684	3,337	2	7	-	3
Nacaca-Nicuapa	684	3,337	2	7	-	3
Mueda	373	1,654	-	19	95	4
Bairro Chudi	116	456	-	4	27	3
Centro de Eduardo	4	16	-	-	-	-
Centro de Nandimba	22	67	-	-	9	1
Lipelua	178	789	-	13	43	-
Vila de Mueda	53	326	-	2	16	-
Macomia	12	43	-	-	1	1
Xinavane	12	43	-	-	1	1
Namuno	5	21	-	1	-	-
Milipone	5	21	-	1	-	-
Ibo	5	16	-	-	-	-
Vila do Ibo	5	16	-	-	-	-
Grand Total	1079	5071	2	27	96	8