

**4,586**  
Individuals

\*arriving at different locations within the reporting period (04 - 08 July 2022)

**1,070**  
Households

Triggers: Attacks, fear of attack

Means of transportation: Foot, bus



Fear of attacks and subsequent confirmed attacks in Ancyube district by Non-State Armed Groups triggered 4,586 individual displacement movements within Ancyube, Chiure, Quissanga, Balama, Mecufi, Mueda, Macomia, Montepuez, Meluco, Ibo, Namuno, Muidumbe, Metuge, Memba, Cidade de Nampula, Mecuburi, Nacala, Nacaroa, Ribaue, Erati and Cidade de Pemba. An estimate of 403 Internally Displaced Persons (IDPs) have been identified with vulnerabilities. At least 45% of these movements are arrivals in Metuge, 22% in Cidade de Pemba, and 7% in Macomia. New arrivals recorded within the reporting period map 759 individuals predominantly moving into displacement sites across Balama, Metuge, and Namuno. Approximately 62% of recorded movements represent individuals displaced for the first time while 38% represent individuals displaced more than once.

IOM teams observed an average of 917 individuals arriving at different locations within the reporting period (04 - 08 July) (please see below charts for further information). Current figures are to be considered as displacement movements observed between 04 to 08 July 2022.

The objective of the Emergency Tracking Tool (ETT) - Movement Alert is to collect information on large and sudden population movements, and to provide support to the humanitarian response partners by disseminating data on IDPs to support effective humanitarian response to the affected population. Information is collected through key informants interviews or direct observation. This dashboard provides basic information on displacements, and additional information can be shared upon request.

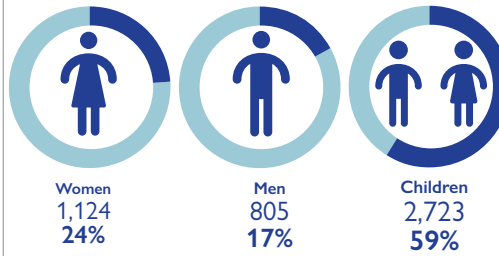
*DISCLAIMER: The depiction and use of boundaries, geographic names, and related data shown on maps and included in this report are not warranted to be error free nor do they imply judgment on the legal status of any territory, endorsement or acceptance of such boundaries by IOM.*

## URGENT NEEDS

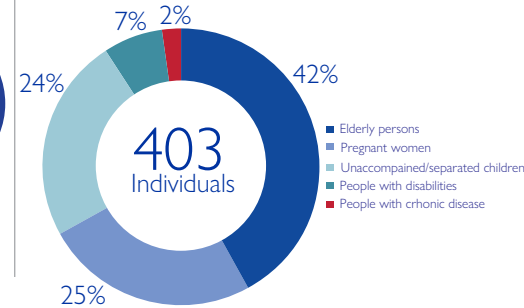


Urgent needs are calculated by weighting the total number of IDP arrivals in each group against the stated priority

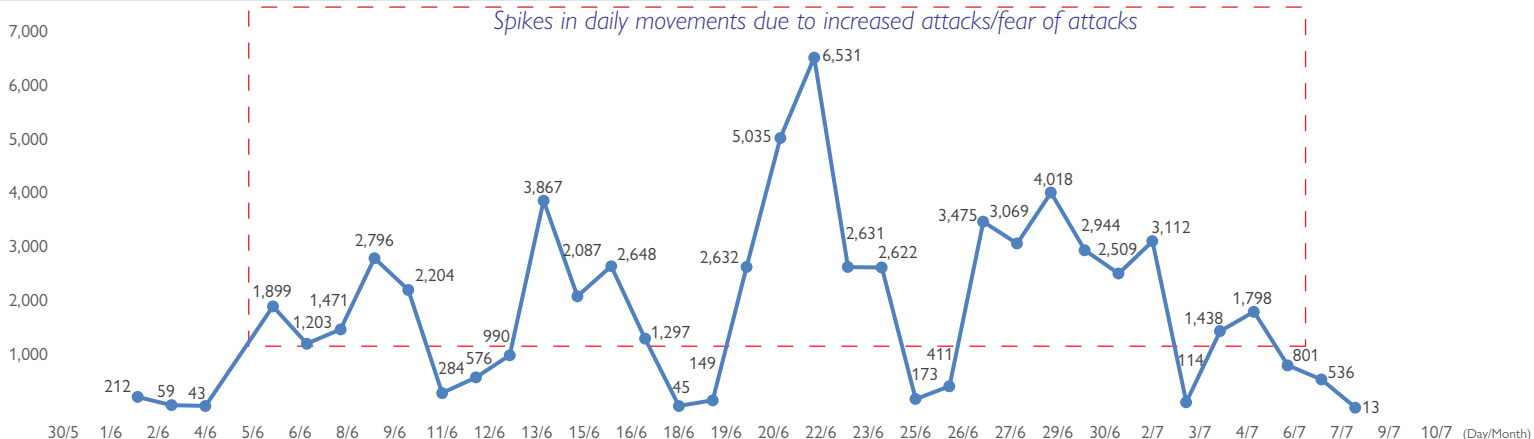
## DEMOGRAPHIC PROFILE



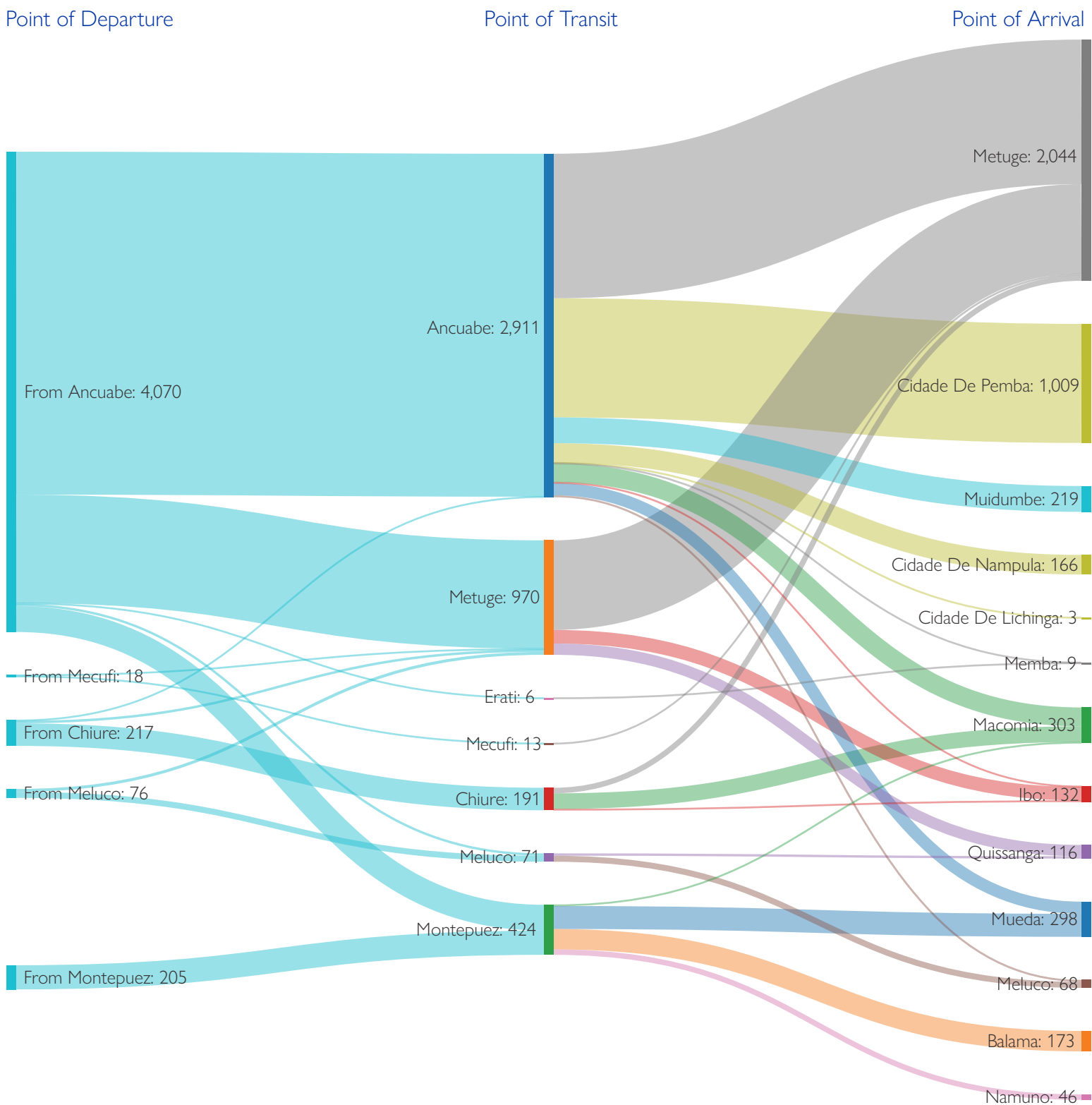
## VULNERABILITIES



## NUMBER OF INDIVIDUALS (2 JUNE - 8 JULY 2022)



MOVEMENT FLOWS (ARRIVALS AT DISTRICT LEVEL)



Website : <https://displacement.iom.int/mozambique>

Feedback: DTMMozambique@iom.int

@IOM\_Mozambique

Supported by :



When quoting, paraphrasing, or in any other way using the information mentioned in this report, the source needs to be stated appropriately as follows: : "The International Organization for Migration July, 2022, Displacement Tracking Matrix"