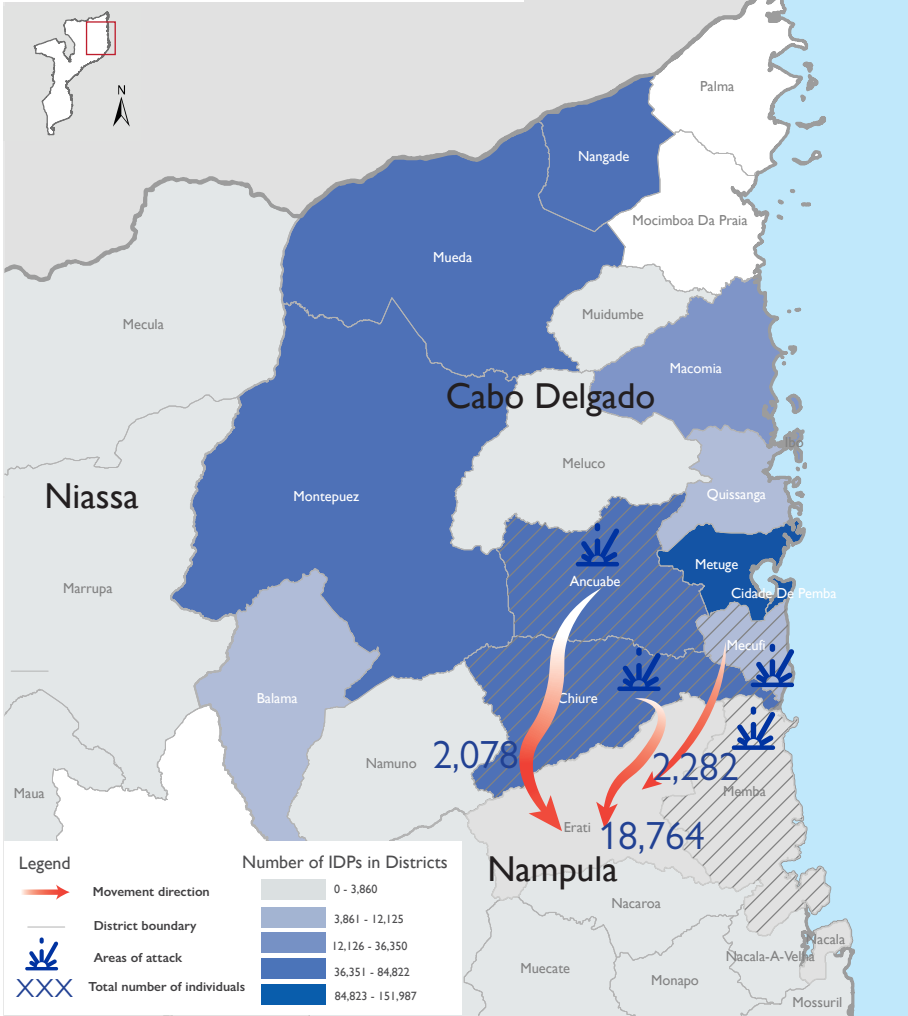


## LARGEST POPULATION MOVEMENTS



Fear of attacks and subsequent confirmed attacks in Ancyube and Chiure district by Non-State Armed Groups triggered the movements of 24,113 individuals to Nampula province, in the districts of Erati, Malema, Meconta, Memba, Mogincual, Nacala, Ribaue and Cidade de Nampula. Approximately 115 Internally Displaced Persons (IDPs) have been identified with vulnerabilities. At least 96% of these movements are arrivals in Erati. Estimated 24,113 individuals arrived in Erati district, which is main entrance of Nampula province.

IOM identified 23,567 individual displacement movements in the previous reporting period (02-20 June). Impact of new attacks reported between 9 and 19 June in Ancyube and Chiure districts account for the increase of displacement movements representing 24,113 individuals. Current figures are to be considered as cumulative displacement movements observed between 02-23 June.

The objective of the Emergency Tracking Tool (ETT) - Movement Alert is to collect information on large and sudden population movements, and to provide support to humanitarian response partners by disseminating data on IDPs for ensuring effective humanitarian response to the affected population. Information is collected through key informant interviews or direct observation. The dashboard provides basic information on displacements, and additional information can be shared upon request.

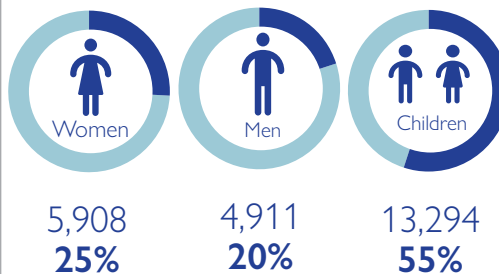
**DISCLAIMER:** The depiction and use of boundaries, geographic names, and related data shown on maps and included in this report are not warranted to be error free nor do they imply judgment on the legal status of any territory, endorsement or acceptance of such boundaries by IOM.

## URGENT NEEDS

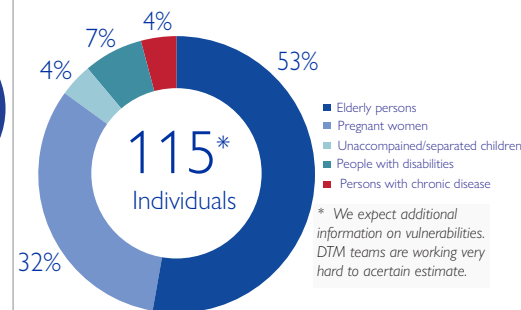


Top needs are calculated by weighting the total number of IDP arrivals in each group against the stated priority needs.

## DEMOGRAPHIC PROFILE



## VULNERABILITIES



MOVEMENT FLOWS (ARRIVALS AT DISTRICT LEVEL)

Point of Departure

Point of Transit

Point of Arrival

