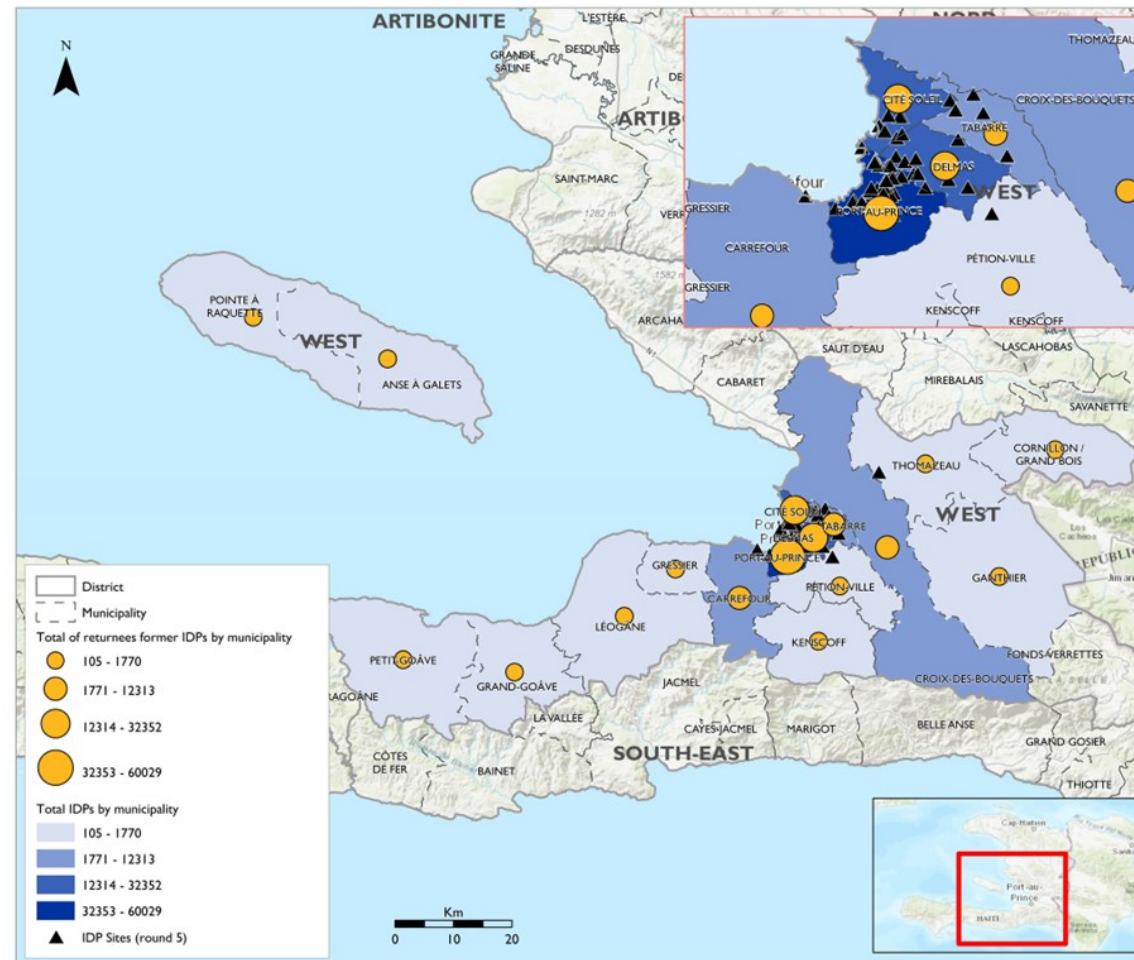


Host locations of Internally Displaced Persons (IDPs) and Returnees former IDPs



Key figures

494 assessed locations  
72% through field interviews  
28% through phone interviews

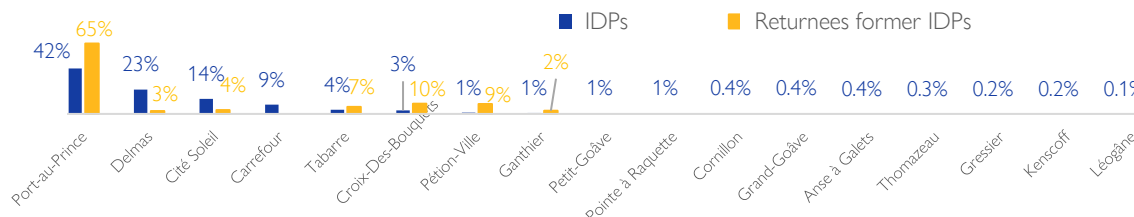
1,334 key informants interviewed

33,665 Internally displaced households  
146,584 Internally displaced Persons

Areas	# total IDPs	# of IDPs in host families	# of IDPs in IDP sites	# of sIDPs sites
PAPMA*	139,853	59,262	80,591	73
Outside PAPMA	6,731	6,491	240	1
<b>Total western district</b>	<b>146,584</b>	<b>65,753</b>	<b>80,831</b>	<b>74</b>

\* PAPMA = Port-au-Prince Metropolitan Area

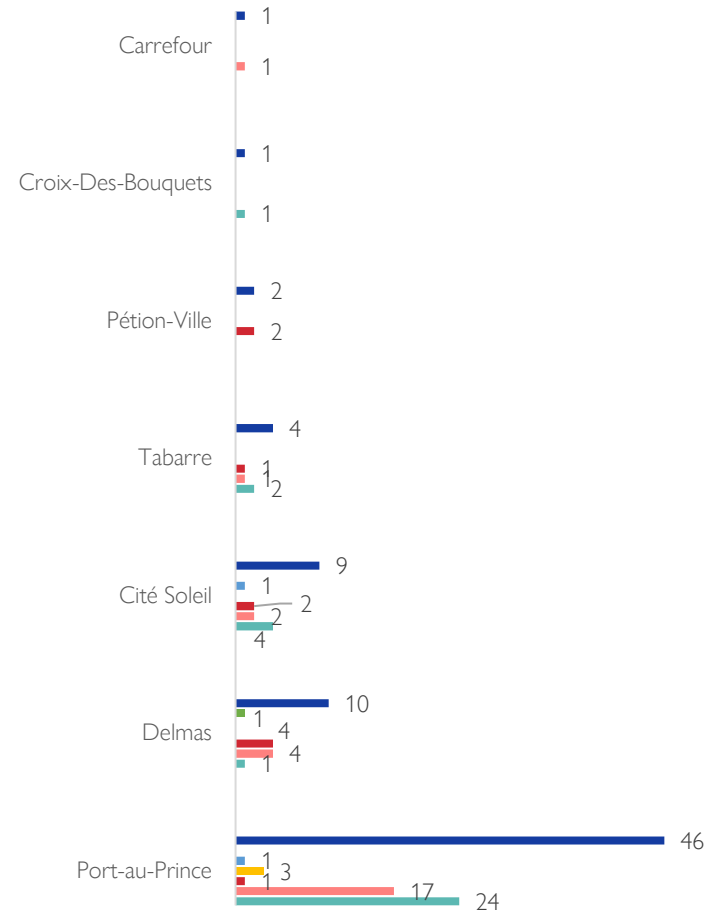
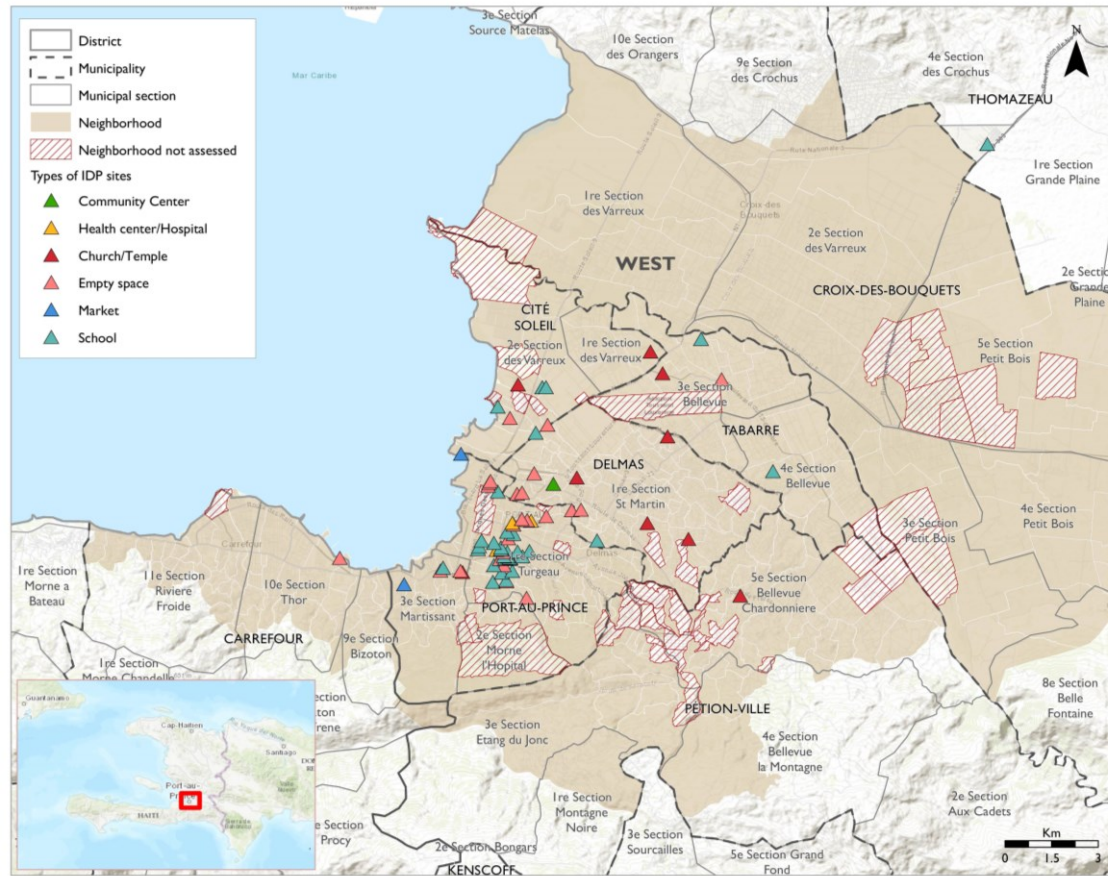
Increase in the proportion of IDPs in sites in the PAPMA compared to those in host families (45% of IDPs were in sites in round 4; this percentage increased to 58% in Round 5).  
See page 5 for more details



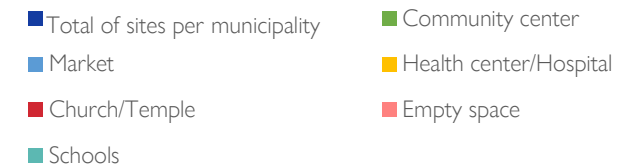
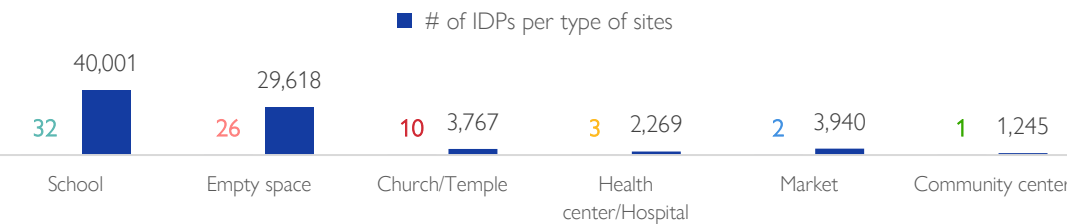
4,662 Returned households (Former IDPs)  
26,301 Returned individuals  
97% in the PAPMA  
3% in areas outside PAPMA



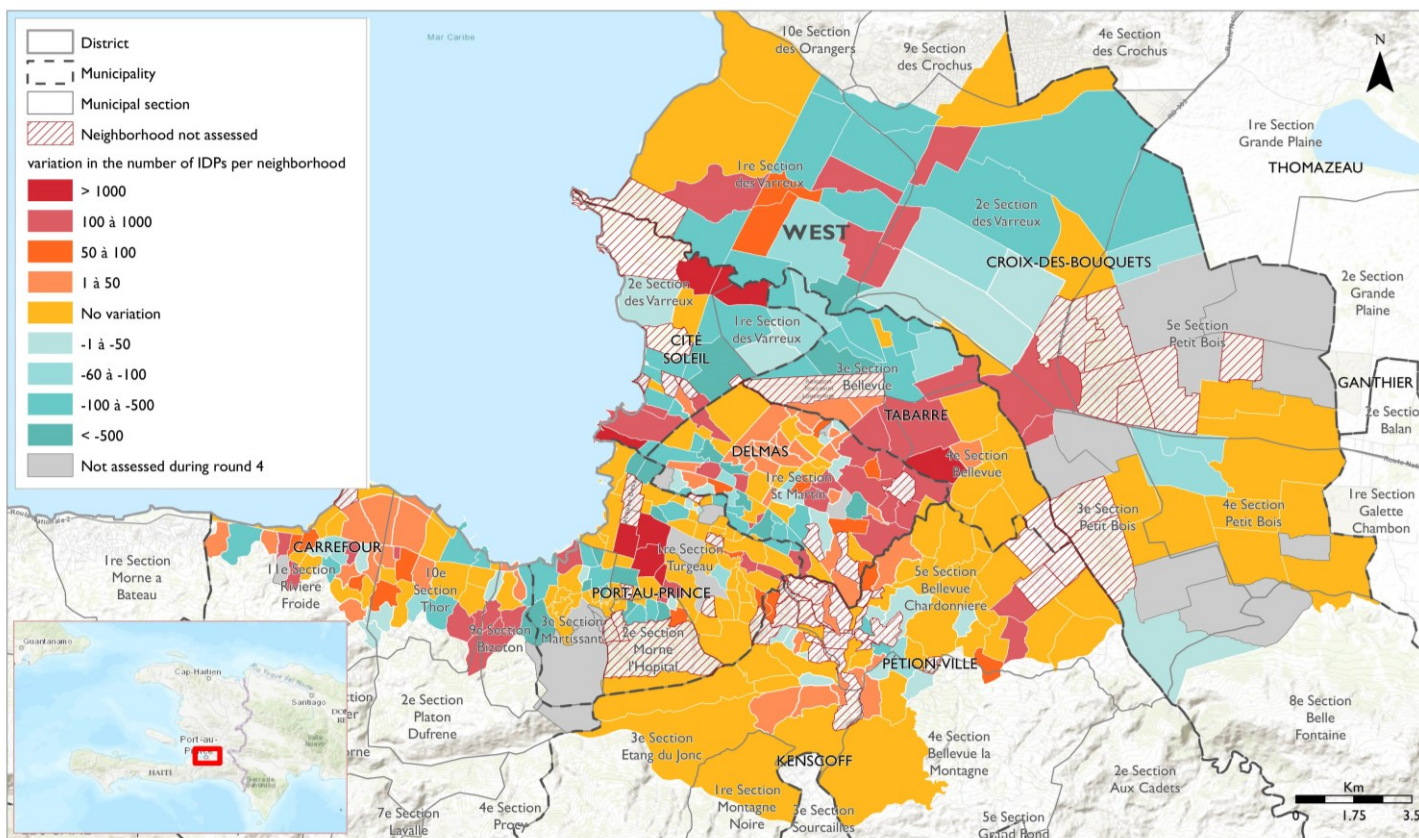
Types of IDPs' sites in the Port-au-Prince Metropolitan Area



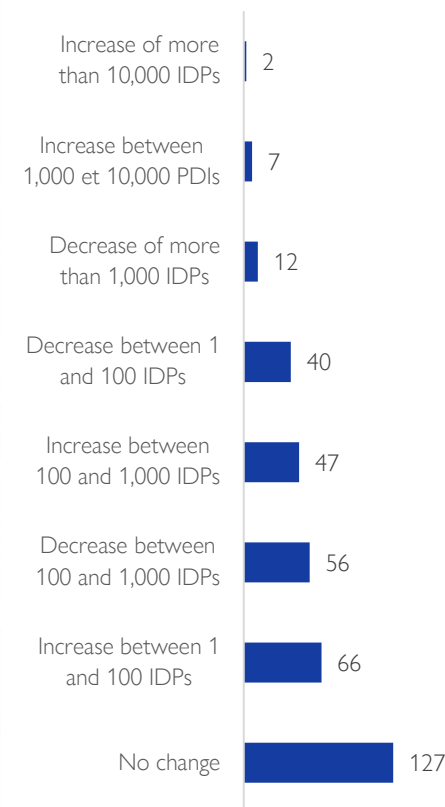
Number of sites and IDPs per type of sites



## Variations of IDPs per neighborhood, between Rounds 5 and 4



## Number of neighborhoods per variation



## Top 5 of neighborhoods where IDP numbers have increased significantly

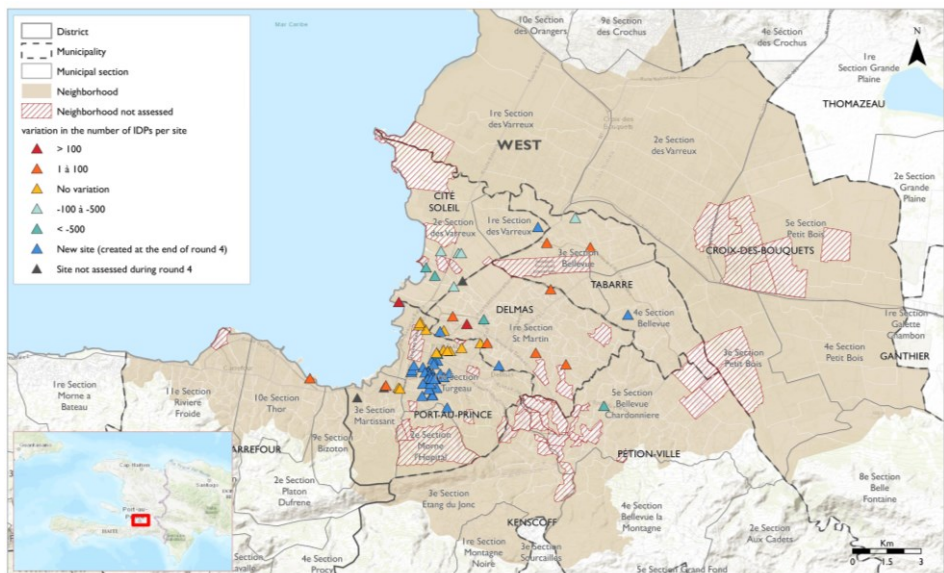
Municipality	Neighborhood	Round 4	Round 5	Variation in IDP numbers
Port-au-Prince	Bas Peu de Chose	0	15,664	+ 15,664
Port-au-Prince	Champ-de-Mars	0	10,620	+ 10,620
Port-au-Prince	Bois Verna	0	2,650	+ 2,650
Cité Soleil	Wharf Jeremie	2,911	4,829	+ 1,918
Tabarre	Caradeux	60	1,887	+ 1,827

A total of 127 neighborhoods in the PAPMA have not seen any change in the number of IDPs they host. Seven (7) neighborhoods, mainly located in the municipality of Port-au-Prince, experienced a significant increase. Particularly, neighborhoods of Bas Peu de Chose, Champs-de-Mars and Bois Verna, to which the majority of people who fled attacks of August 2023 in Carrefour-Feuilles and Savanes Pistaches had taken refuge.

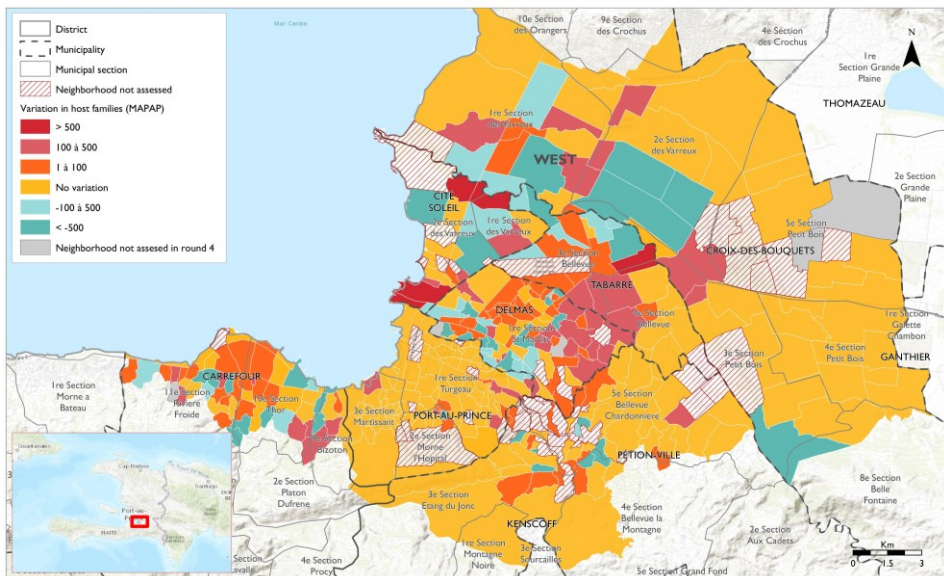
On the other hand, the number of IDPs fell by more than 1,000 people in 12 neighborhoods. Results seem to indicate that these people left the PAPMA to take refuge in provinces. DTM is conducting assessments in provinces to provide a national wide view of the displacement situation in Haiti.



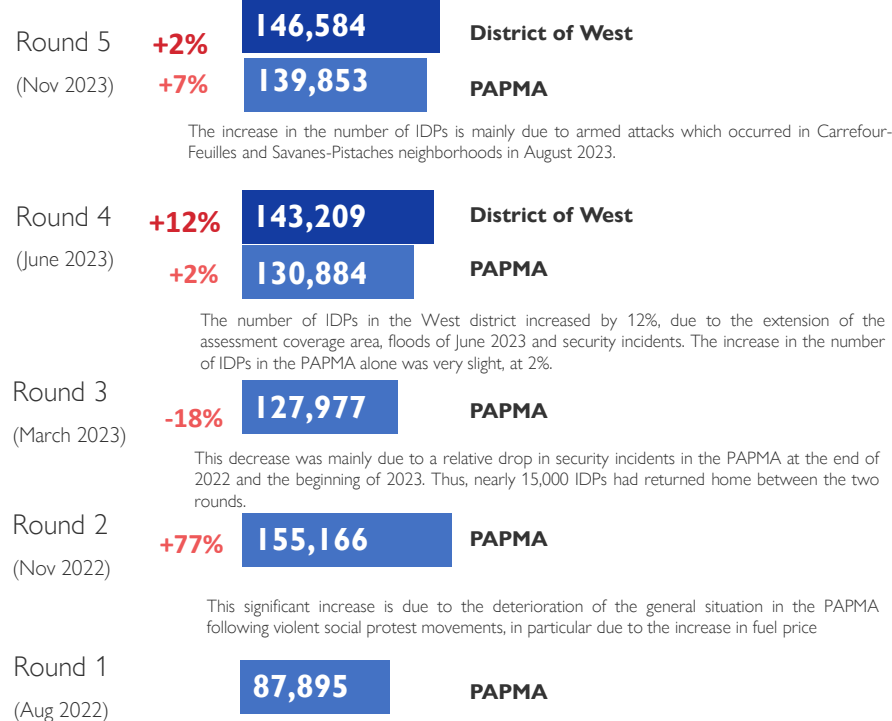
### Variations in the number of IDPs in sites of the PAPMA, between Rounds 5 and 4



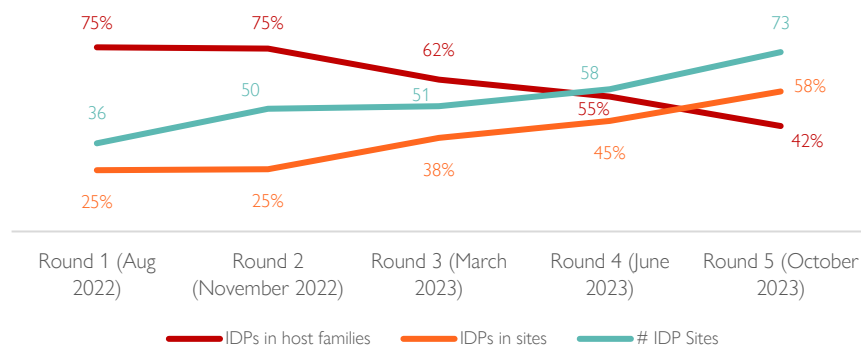
### Variations in the number of IDPs in host families in the PAPMA, between Rounds 5 and 4



### Variations in the number of IDPs, between Rounds 1 and 5 in the West and the PAPMA in particular

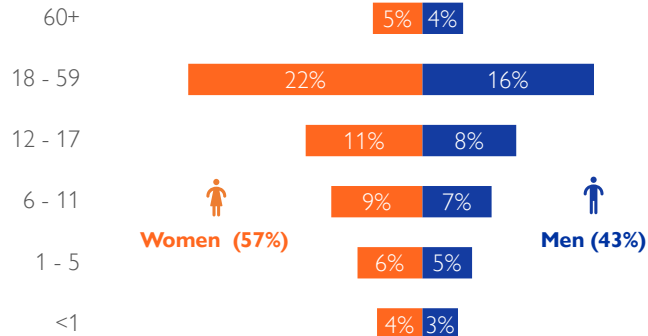


### Variations between Rounds 1 and 5 in the PAPMA: IDPs in host families vs. in sites and number of sites

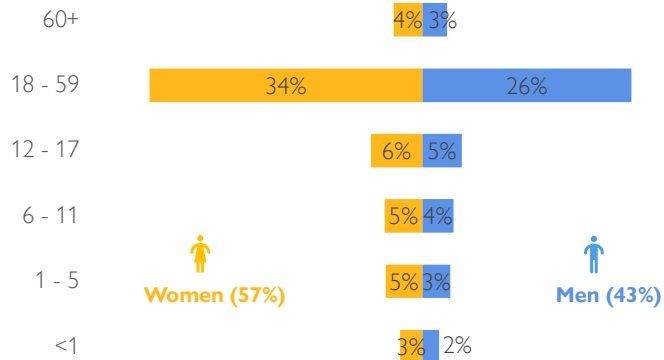


## Disaggregation by sex and age groups

### Internally displaced persons



### Returnees former IDPs



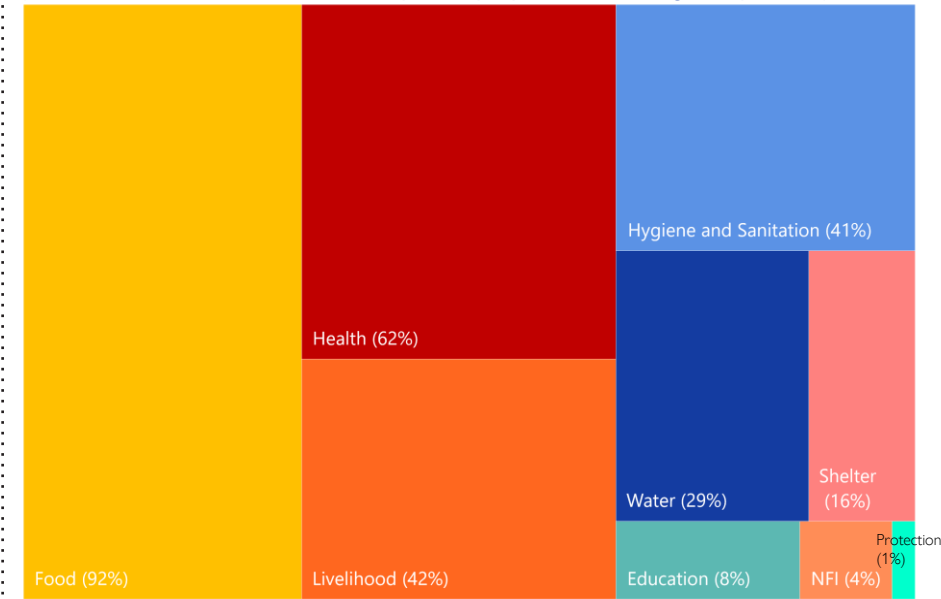
## Reasons of the displacement and return

Reasons of IDPs' displacement	%
Attack / Violence	98%
Natural disaster	1%
Preventive displacement / Fear	1%

Reasons for return	%
Improved security conditions in returning areas	74%
Access to livelihoods in the returning area	16%
Increased insecurity in the host location	7%
Cohabitation issues with host communities in the host location	2%
Lack of humanitarian aid in the host location	1%

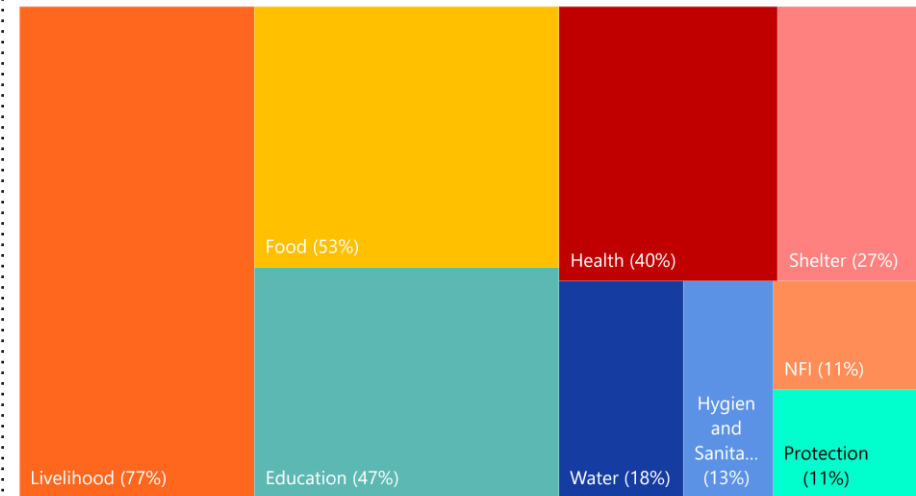
## Priority needs of IDPs in sites

(% of assessed sites where each need was reported by key informants among the top 3 needs)

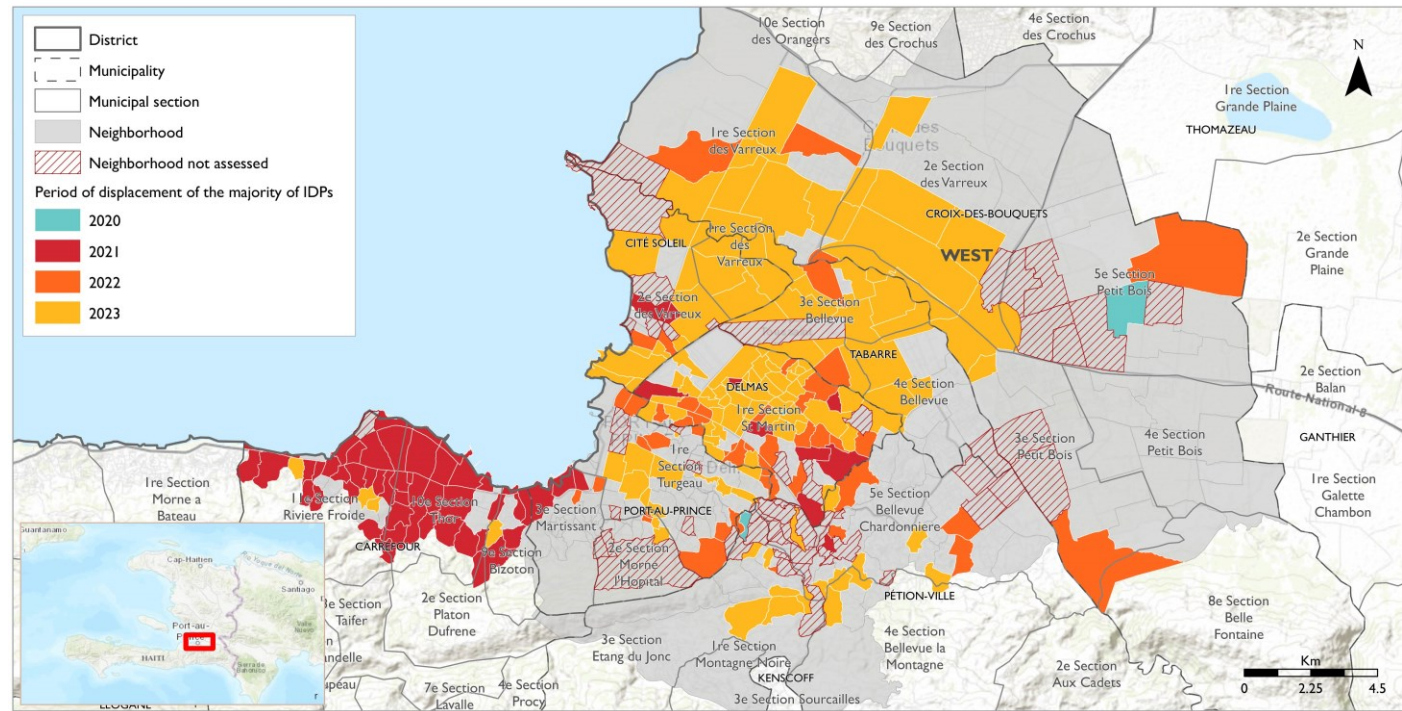


## Priority needs of IDPs in host families

(% of assessed locations where each need was reported by key informants among the top 3 needs)



Period of displacement of IDPs by neighborhood



The vast majority of IDPs were displaced either in 2022 (29%), or in 2023 (58%), particularly in August 2023 due to attacks which occurred in Carrefour-Feuilles and Savanes Pistaches, two neighborhoods located in the municipality of Port-au-Prince (see [Emergency Monitoring report 22](#)).

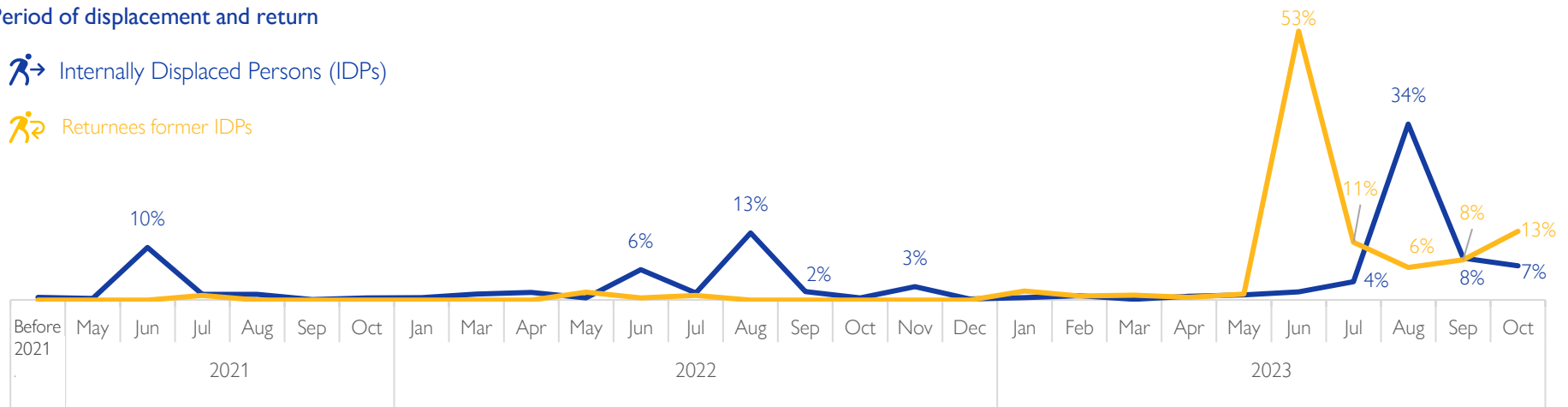
IDPs who were displaced since 2021 are mainly located in the municipality of Carrefour, which hosts 9 per cent of IDPs in the Western district,

Almost all returnees – Former IDPs (97%) returned to their places of origin in 2023. It should be noted that these returns are not necessarily sustainable due in particular to the volatility of the security situation.

Period of displacement and return

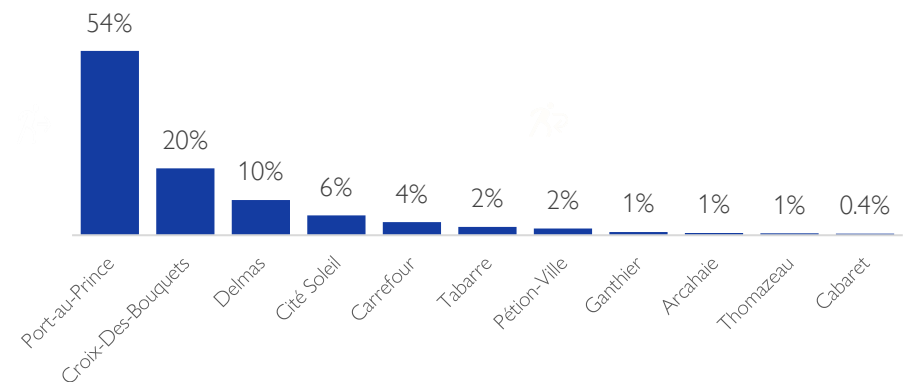
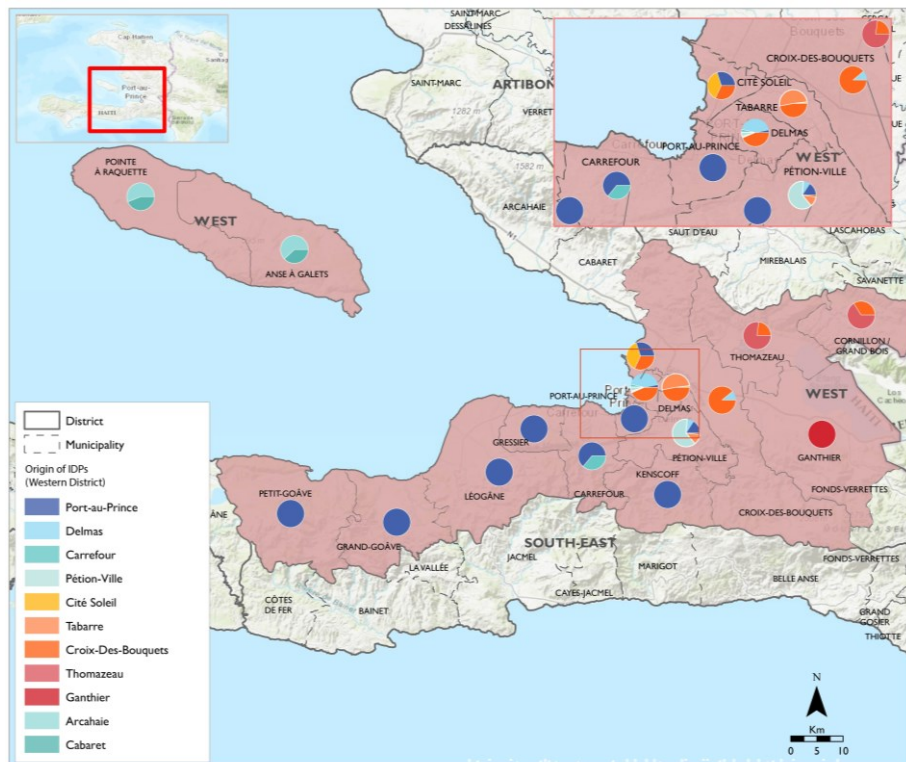
Internally Displaced Persons (IDPs)

Returnees former IDPs

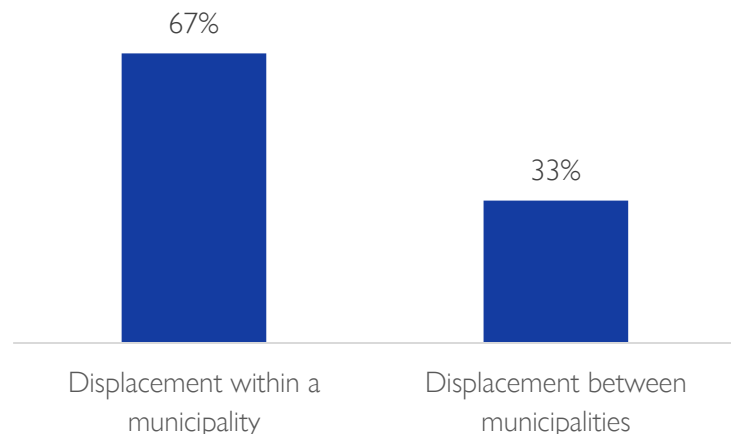
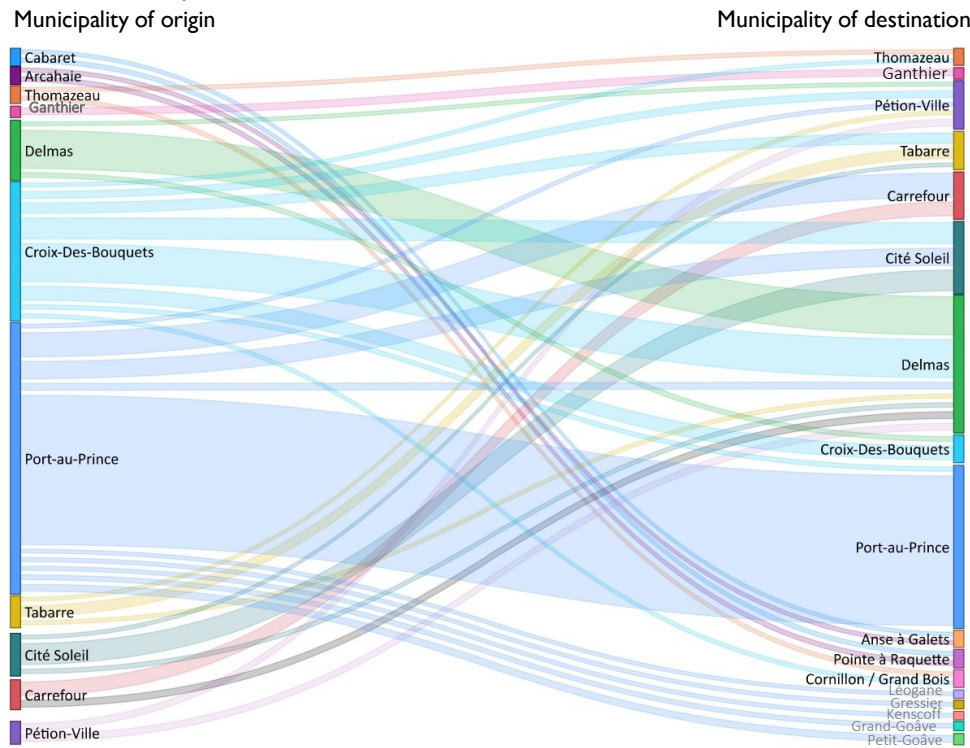




### Origins of IDPs



### Distance of displacement of IDPs

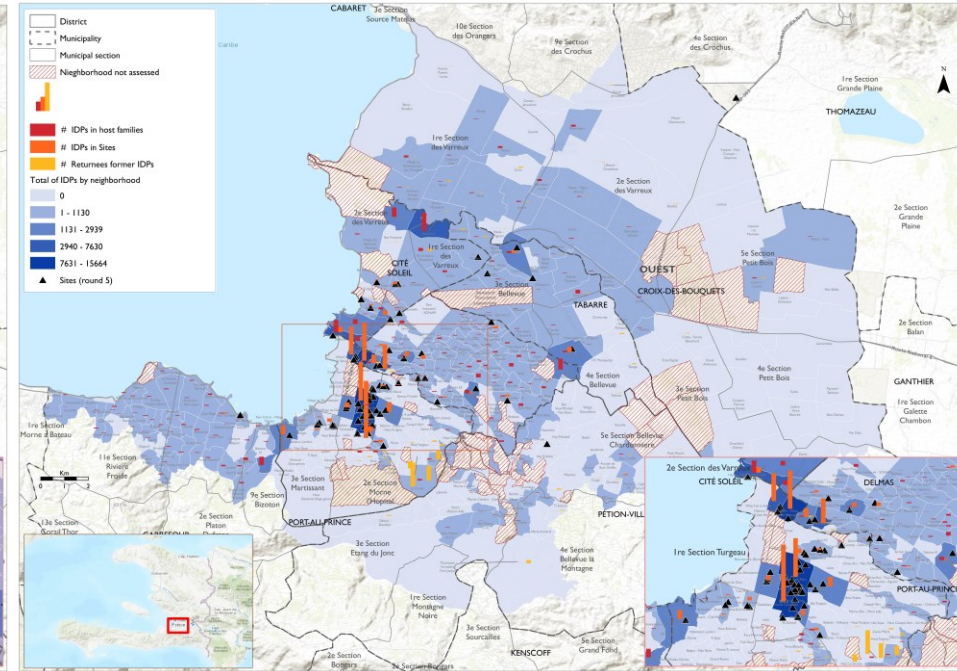
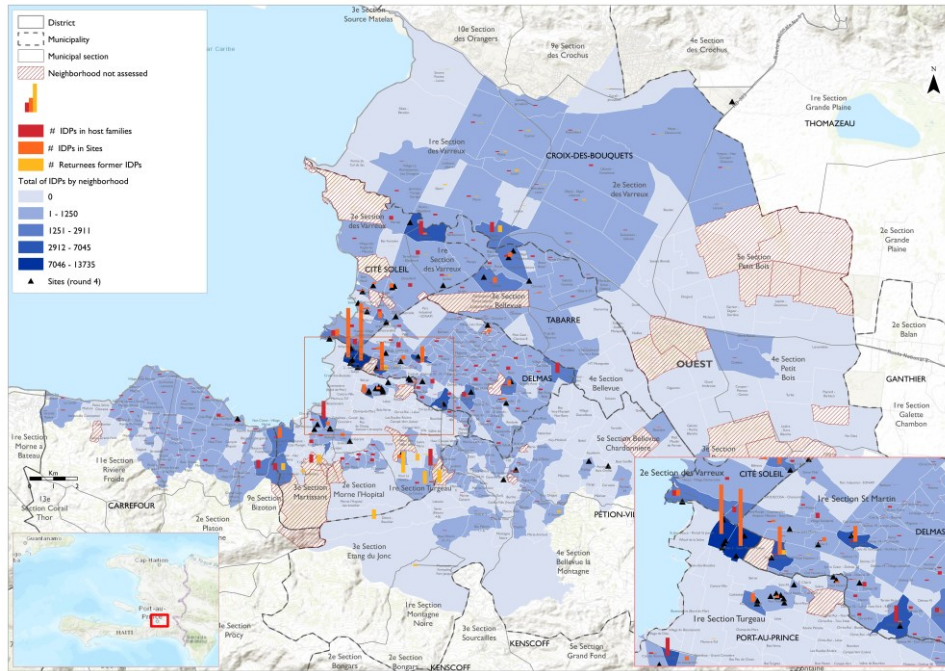




Comparison of the general displacement situation in the PAPMA between Rounds 4 and 5

**JUNE 2023 – ROUND 4**

**NOVEMBER 2023 – ROUND 5**



Maps in this report are for illustrative purposes only. The representations and use of boundaries and geographical names on these maps may include errors and do not imply any judgment on the legal status of any territory or official endorsement or acceptance of such boundaries by IOM.