



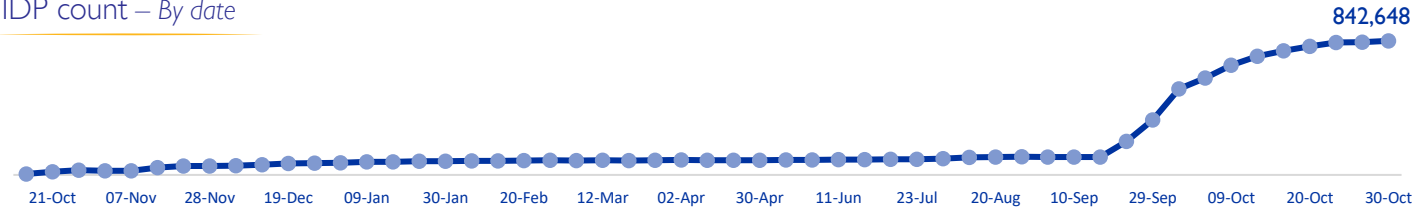
MOBILITY SNAPSHOT – Round 58

Report Production Date: 31 October 2024 | Data collected up till 4 pm on 30 October 2024

Overview

The International Organization for Migration (IOM) conducts daily monitoring of population movements to support preparedness and response efforts. This work is carried out in partnership with the Disaster Risk Management Unit, technically supported by the United Nations Development Programme, to triangulate and verify data from IOM's mobility tracking exercise and the Lebanese Red Cross household registration exercise.

IDP count – By date



IDPs by district of arrival and district of origin



842,648 (52% female and 48% male)
Total displaced individuals



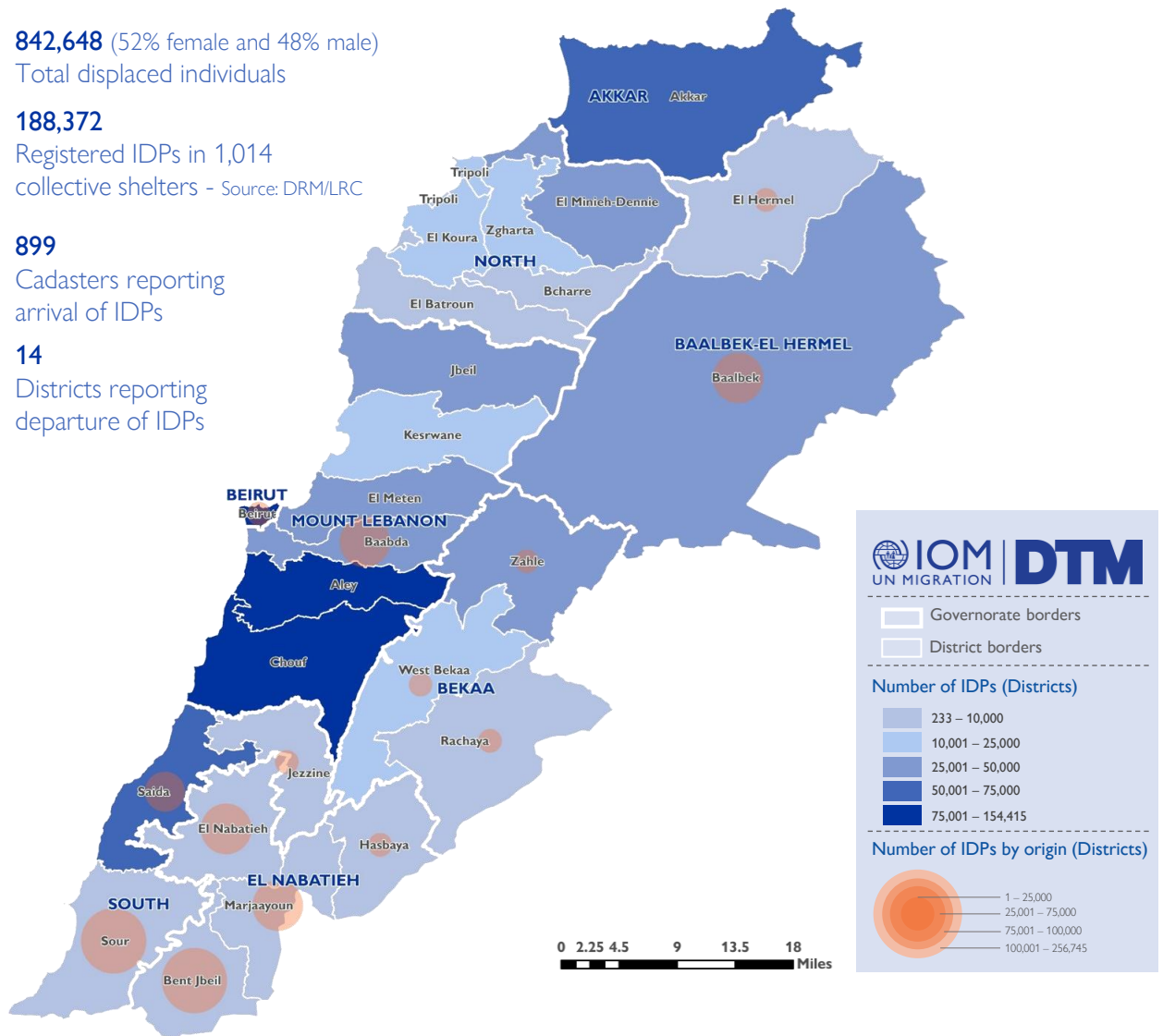
188,372
Registered IDPs in 1,014 collective shelters - Source: DRM/LRC



899
Cadasters reporting arrival of IDPs



14
Districts reporting departure of IDPs



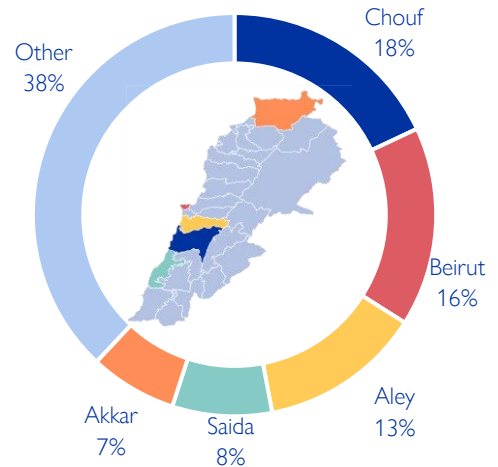
This map is for illustration purposes only. Names and boundaries on this map do not imply official endorsement or acceptance by IOM.

*DRM/LRC conducts household level registration for IDPs to inform direct assistance. This complements IOM's mobility tracking which captures an estimate of the total IDP population to inform national preparedness and response planning, as well as resource mobilisation.

Displacement within Lebanon – By district of arrival

Governorate	District	# of Cadasters	IDPs
Mount Lebanon	Chouf	82	154,415
Beirut	Beirut	11	133,053
Mount Lebanon	Aley	61	107,906
South	Saida	22	68,120
Akkar	Akkar	134	58,899
Baalbek-El Hermel	Baalbek	25	43,300
Mount Lebanon	El Meten	76	42,297
Mount Lebanon	Jbeil	68	41,481
Bekaa	Zahle	39	28,632
Mount Lebanon	Baabda	46	27,157
North	El Minieh-Dennie	43	25,260
Mount Lebanon	Kesrwane	54	21,689
Bekaa	West Bekaa	25	17,093
North	Zgharta	25	14,618
North	Tripoli	13	12,773
North	El Koura	39	12,504
South	Jezzine	30	7,909
South	Sour	1	7,495
North	El Batroun	51	6,968
Bekaa	Rachaya	19	4,240
El Nabatieh	Hasbaya	11	2,717
North	Bcharre	12	2,236
El Nabatieh	Bent Jbeil	1	609
El Nabatieh	El Nabatieh	7	594
Baalbek-El Hermel	El Hermel	1	450
El Nabatieh	Marjaayoun	3	233
Total		899	842,648

Chart 1: IDPs distribution by district of arrival

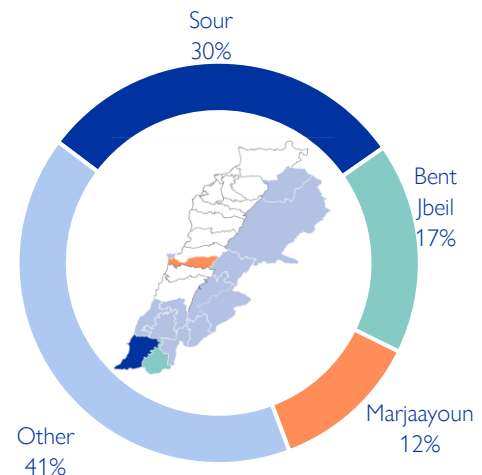


As of 30 October, Lebanon has recorded 842,648 internally displaced persons (IDPs), showing around 1% increase since 28 October. IDPs have sought safety in 899 cadasters throughout Lebanon. Displacement has been observed in all 26 districts across all eight governorates. 62% of the IDPs are in five districts out of the total 26 districts hosting IDPs—specifically, Chouf, Beirut, Aley, Saida, and Akkar.

Displacement within Lebanon – By district of departure

Governorate	District	IDPs
South	Sour	256,745
El Nabatieh	Bent Jbeil	142,892
El Nabatieh	Marjaayoun	98,533
El Nabatieh	El Nabatieh	88,033
Mount Lebanon	Baabda	87,661
Baalbek-El Hermel	Baalbek	78,038
South	Saida	46,952
Beirut	Beirut	20,641
El Nabatieh	Hasbaya	8,827
Bekaa	West Bekaa	5,750
Bekaa	Zahle	4,126
Baalbek-El Hermel	El Hermel	2,925
South	Jezzine	1,000
Bekaa	Rachaya	525
Total		842,648

Chart 2: IDPs distribution by district of departure



The majority of IDPs (59%) originate from three districts. These three districts span along the Southern border of Lebanon. Specifically, 30% are from Sour, 17% are Bent Jbeil, and 12% are from Marjaayoun. The remaining 41% originate from 11 different districts.

New displacement within Lebanon – By district of arrival

Governorate	District	# of Cadasters	IDPs
Mount Lebanon	Chouf	16	4,116
Bekaa	Zahle	6	2,500
South	Saida	10	1,821
Baalbek-El Hermel	Baalbek	6	1,645
Beirut	Beirut	4	1,500
Mount Lebanon	Jbeil	9	1,451
Mount Lebanon	El Meten	13	1,313
Mount Lebanon	Aley	10	1,213
Mount Lebanon	Baabda	6	755
Mount Lebanon	Kesrwane	4	698
Akkar	Akkar	13	469
El Nabatieh	Hasbaya	3	385
Bekaa	West Bekaa	1	250
North	El Minieh-Dennie	3	116
Bekaa	Rachaya	3	99
North	El Koura	4	93
South	Jezzine	5	26
North	El Batroun	3	23
North	Bcharre	2	19
North	Tripoli	2	19
El Nabatieh	Marjaayoun	2	13
El Nabatieh	El Nabatieh	1	1
Total		126	18,525

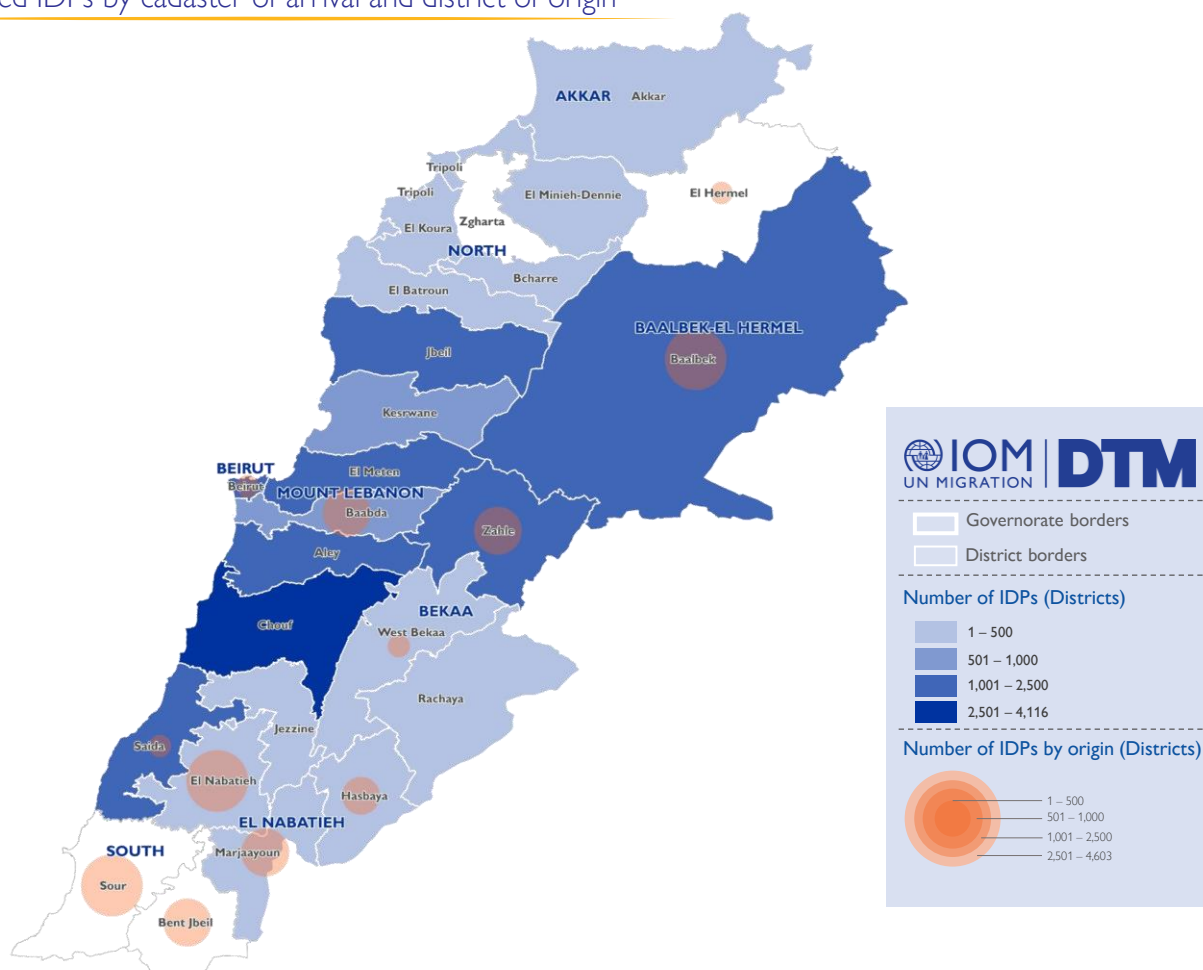
In the past week, there have been 18,525 new displacements. These individuals might be experiencing displacement for the first time or undergoing secondary movement.

The majority of newly displaced individuals come from Sour (25%), El Nabatieh (21%), Baalbek (16%), Marjaayoun (11%), and Bent Jbeil (8%) districts. The remaining 19% relocated from Baabda, Zahle, Hasbaya, Beirut, West Bekaa, Saida, and El Hermel districts.

Over the past week, the top five destinations (districts) for newly displaced individuals were Chouf (22%), Zahle (13%), Saida (10%), Baalbek (9%), and Beirut (8%).

The increase in total number of IDPs may not always align with the number of new arrivals within a specific period. This difference often occurs when Key Informants (KIs) report cumulative totals that include previously uncounted IDPs.

Newly arrived IDPs by cadaster of arrival and district of origin



This map is for illustration purposes only. Names and boundaries on this map do not imply official endorsement or acceptance by IOM.

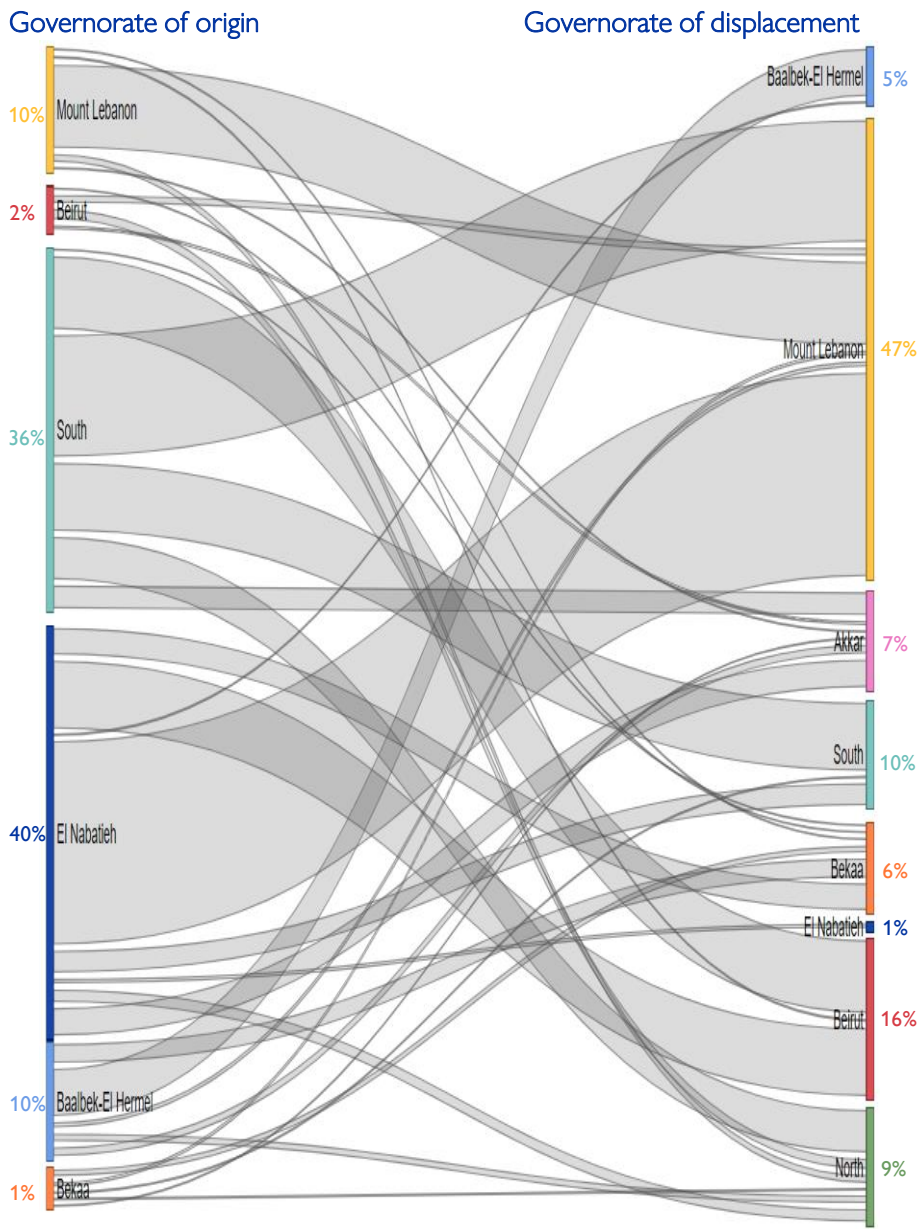
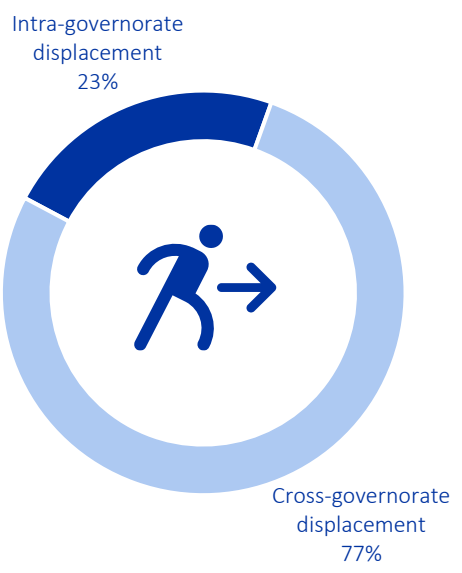
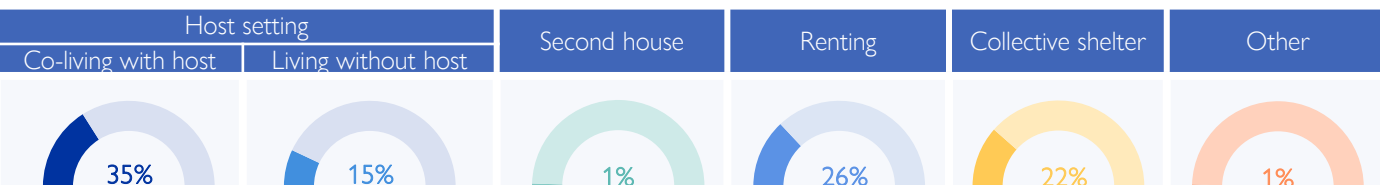


Chart 3: Displacement trends



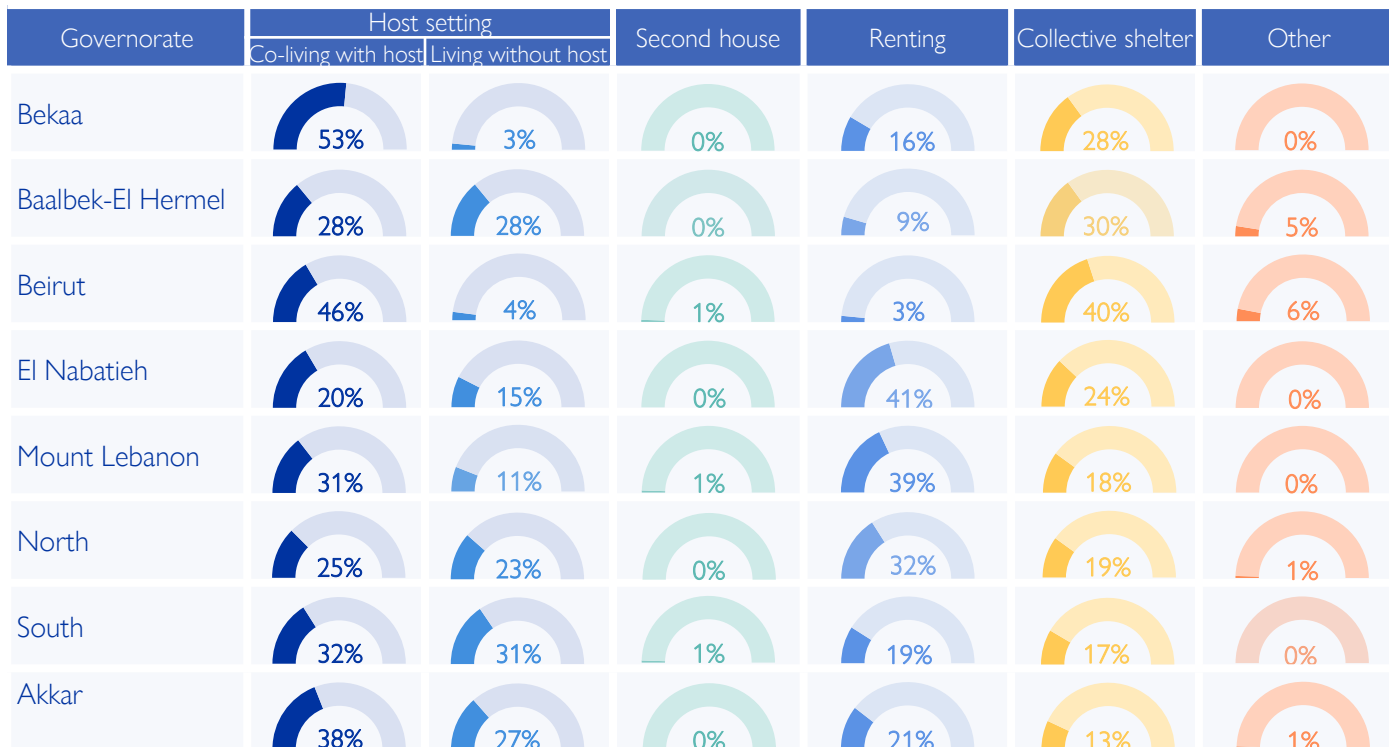
Overall, 77% of the displacement has occurred outside the boundaries of the IDPs' governorate of origin. While 40% (338,285) of the IDPs originate from El Nabatieh, of this population 99% fled to locations outside the boundaries of the governorate. Similarly, in the South governorate, where 36% (304,697) of IDPs originated, 79% of these IDPs chose to move outside the boundaries of the governorate. However, in Mount Lebanon governorate, where 10% (87,661) of IDPs originated, 88% of these IDPs chose to move internally within the boundaries of the governorate.

IDPs distribution by shelter type – By Governorate



Around 50% of IDPs are currently living in host settings, around 22% are housed in 1,014 collective shelters, while 26% have opted for rental housing. Another 1% have relocated to their secondary residences. Meanwhile, 1% are categorized under “other”, this includes unfinished buildings, tents, parks, on the streets, or self-settled sites.

Of the 50% in host settings, 291,461 are co-living with non-internally displaced families, while 122,055 reside separately. Notably, 67% of the 413,516 individuals in host settings are living in overcrowded conditions according to the perception of IOM DTM key informants.



Displacement demographics

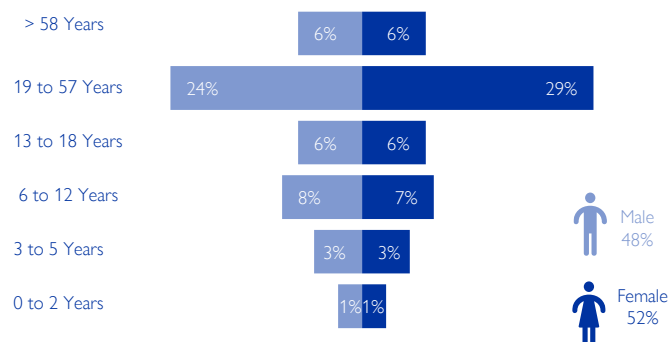


Chart 4: Displacement demographics – Based on Round 57

35% of IDPs are children (< 18 years), while 35% are female adults and 30% are male adults.

Note: These figures represent sample data of 2 households per location provided by key informants and do not reflect the entire IDP population in each area.

Methodology

The objective of the Mobility Snapshot is to support the humanitarian community in preparedness and response planning. Multi-layered data is routinely captured through Rounds using a suite of methodological tools designed to track and monitor displacement. These tools are in line with the [DTM Global Methodological Framework](https://dtm.iom.int/terms-and-conditions).

Data is collected nationwide through a combination of face-to-face and remote data collection methods, utilizing a network of over 50 enumerators and 1,500 key informants. These key informants consist of government officials, mukhtars, community representatives, and neighborhood focal points.

The following citation is required when using any data and information included in this information product: "International Organization for Migration (IOM), October 2024. DTM Mobility Snapshot, Round 58 IOM, Lebanon". For more information on terms and conditions of DTM reports and information products, please refer to <https://dtm.iom.int/terms-and-conditions>.