

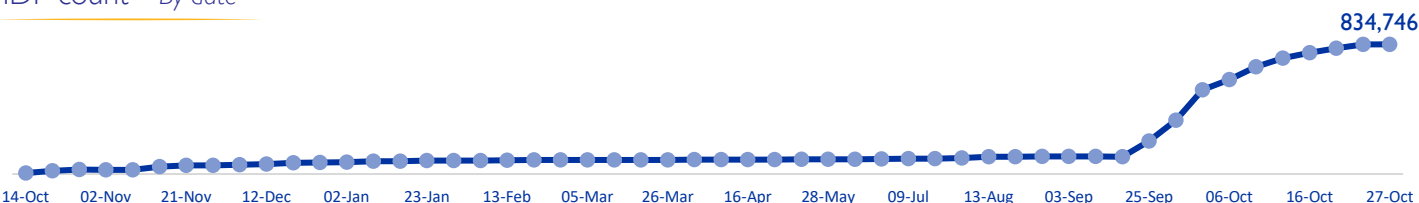
MOBILITY SNAPSHOT – Round 57

Report Production Date: 28 October 2024 | Data collected up till 4 pm on 27 October 2024

Overview

The International Organization for Migration (IOM) conducts daily monitoring of population movements to support preparedness and response efforts. This work is carried out in partnership with the Disaster Risk Management Unit, technically supported by the United Nations Development Programme, to triangulate and verify data from IOM's mobility tracking exercise and the Lebanese Red Cross household registration exercise.

IDP count – By date



IDPs by district of arrival and district of origin



834,746 (52% female and 48% male)
Total displaced individuals



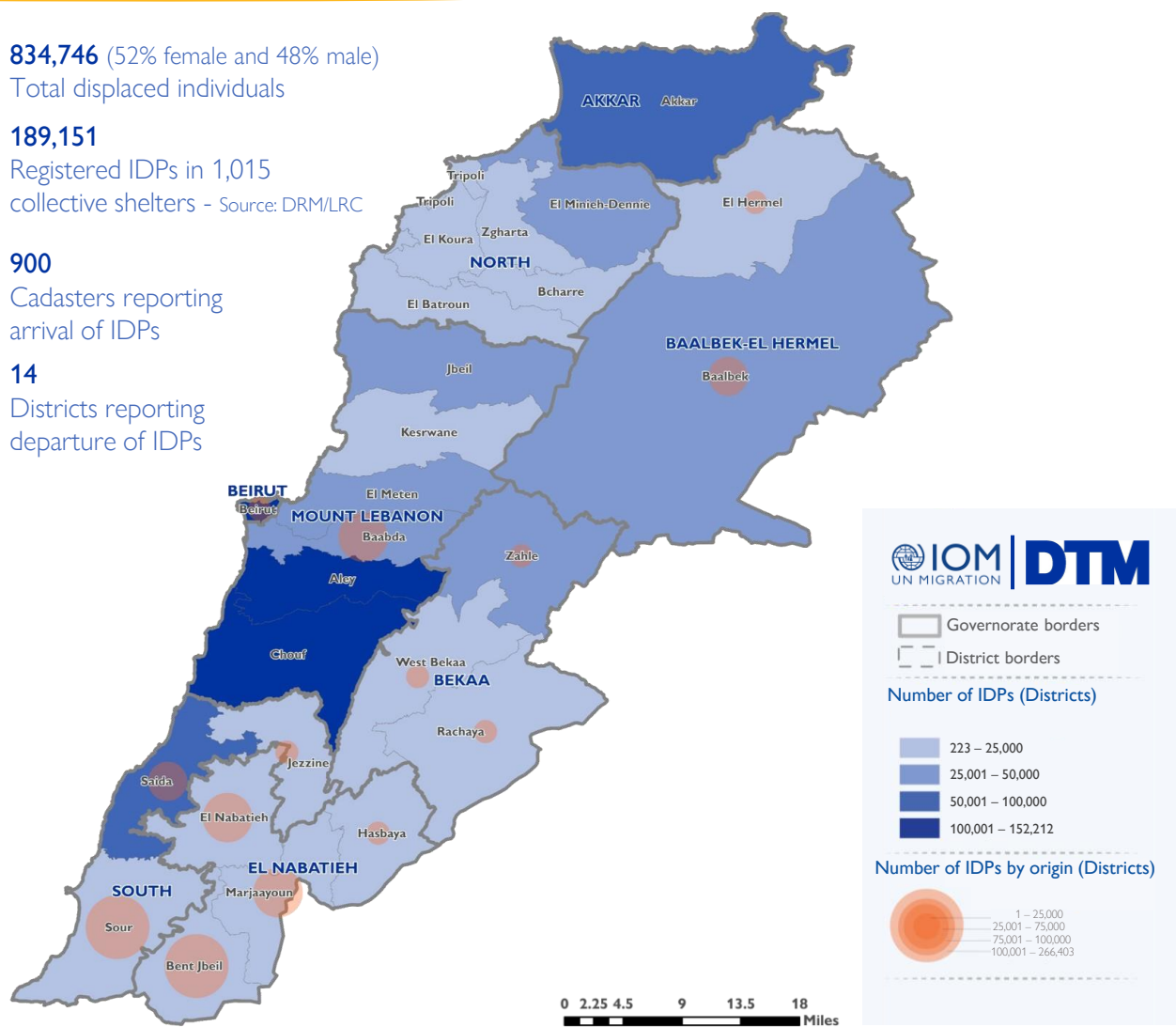
189,151
Registered IDPs in 1,015
collective shelters - Source: DRM/LRC



900
Cadasters reporting
arrival of IDPs



14
Districts reporting
departure of IDPs



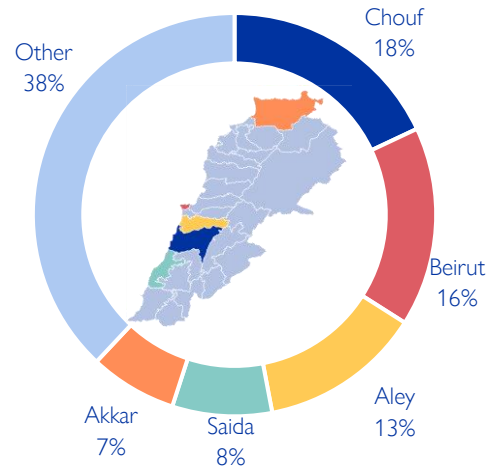
This map is for illustration purposes only. Names and boundaries on this map do not imply official endorsement or acceptance by IOM.

*DRM/LRC conducts household level registration for IDPs to inform direct assistance. This complements IOM's mobility tracking which captures an estimate of the total IDP population to inform national preparedness and response planning, as well as resource mobilisation.

Displacement within Lebanon – By district of arrival

Governorate	District	# of Cadasters	IDPs
Mount Lebanon	Chouf	83	152,212
Beirut	Beirut	11	131,885
Mount Lebanon	Aley	61	108,194
South	Saida	23	67,441
Akkar	Akkar	133	58,908
Baalbek-El Hermel	Baalbek	26	45,108
Mount Lebanon	El Meten	74	41,355
Mount Lebanon	Jbeil	68	40,052
Mount Lebanon	Baabda	47	27,321
Bekaa	Zahle	39	26,869
North	El Minieh-Dennie	44	25,192
Mount Lebanon	Kesrwane	53	20,388
Bekaa	West Bekaa	25	16,834
North	Zgharta	25	14,706
North	Tripoli	13	12,808
North	El Koura	39	12,413
South	Jezzine	30	7,786
South	Sour	1	7,563
North	El Batroun	52	6,963
Bekaa	Rachaya	19	4,203
El Nabatieh	Hasbaya	11	2,329
North	Bcharre	12	2,182
El Nabatieh	Bent Jbeil	1	750
El Nabatieh	El Nabatieh	7	593
Baalbek-El Hermel	El Hermel	1	450
El Nabatieh	Marjaayoun	2	241
Total		900	834,746

Chart 1: IDPs distribution by district of arrival

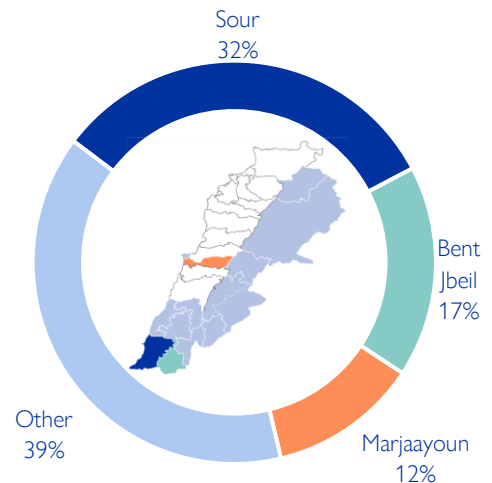


As of 28 October, Lebanon has recorded 834,746 internally displaced persons (IDPs), showing less than 1% increase since 23 October. IDPs have sought safety in 904 cadasters throughout Lebanon. Displacement has been observed in 26 out of the 26 districts across all eight governorates. 63% of the IDPs are in five districts out of the total 26 districts hosting IDPs—specifically, Chouf, Beirut, Aley, Saida, and Akkar.

Displacement within Lebanon – By district of departure

Governorate	District	IDPs
South	Sour	266,403
El Nabatieh	Bent Jbeil	144,132
El Nabatieh	Marjaayoun	96,071
El Nabatieh	El Nabatieh	85,963
Mount Lebanon	Baabda	82,355
Baalbek-El Hermel	Baalbek	69,364
South	Saida	47,790
Beirut	Beirut	21,624
El Nabatieh	Hasbaya	7,270
Bekaa	West Bekaa	5,498
Baalbek-El Hermel	El Hermel	4,401
Bekaa	Zahle	1,447
Bekaa	Rachaya	1,368
South	Jezzine	1,060
Total		834,746

Chart 2: IDPs distribution by district of departure



The majority of IDPs (61%) originate from three districts. These three districts span along the Southern border of Lebanon. Specifically, 32% are from Sour, 17% are Bent Jbeil, and 12% are from Marjaayoun. The remaining 39% originate from 11 different districts.

New displacement within Lebanon – By district of arrival

Governorate	District	# of Cadasters	IDPs
Mount Lebanon	Kesrwane	10	5,462
Beirut	Beirut	3	2,759
Akkar	Akkar	19	1,538
Mount Lebanon	Chouf	14	1,288
Mount Lebanon	El Meten	6	1,047
Mount Lebanon	Aley	7	851
North	El Batroun	6	752
South	Saida	5	670
Mount Lebanon	Baabda	11	489
South	Sour	1	200
North	Tripoli	4	180
Bekaa	Rachaya	5	166
North	El Minieh-Dennie	4	152
South	Jezzine	5	131
Bekaa	West Bekaa	1	130
El Nabatieh	Hasbaya	3	50
North	El Koura	4	31
Mount Lebanon	Jbeil	3	27
El Nabatieh	Marjaayoun	1	24
North	Bcharre	1	10
Total		113	15,957

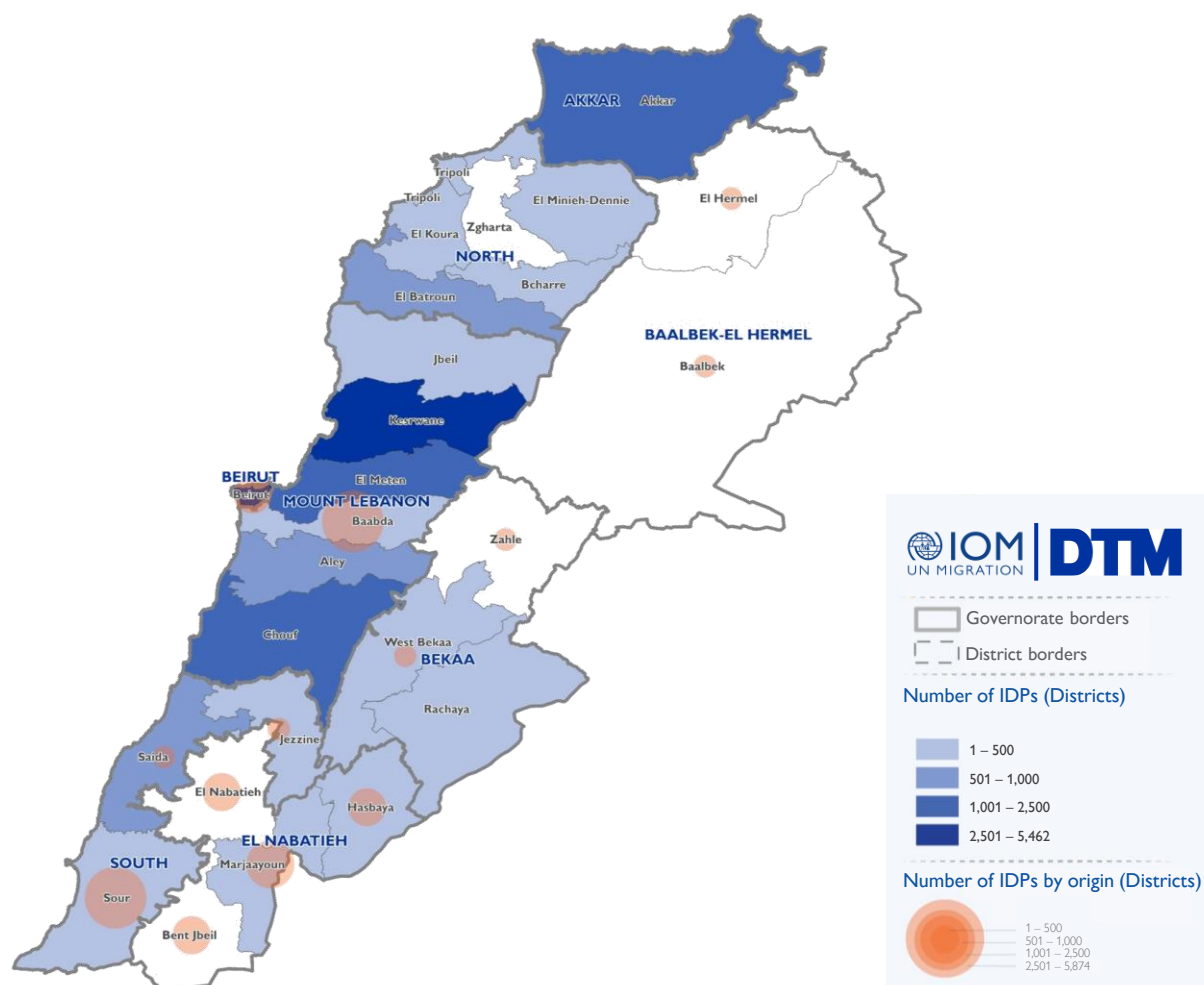
In the past week, there have been 15,957 new displacements. These individuals might be experiencing displacement for the first time or undergoing secondary movement.

The majority of newly displaced individuals come from Baabda (37%), Sour (31%), Marjaayoun (13%), Beirut (5%), and Bent Jbeil (5%) districts. The remaining 10% relocated from El Nabatieh, Hasbaya, Saida, El Hermel, West Bekaa, Baalbek, Zahle, and Jezzine districts.

Over the past week, the top five destinations (districts) for newly displaced individuals were Kesrwane (34%), Beirut (17%), Akkar (10%), Chouf (8%), and El Meten (7%).

The increase in total number of IDPs may not always align with the number of new arrivals within a specific period. This difference often occurs when Key Informants (KIs) report cumulative totals that include previously uncounted IDPs.

Newly arrived IDPs by cadaster of arrival and district of origin



This map is for illustration purposes only. Names and boundaries on this map do not imply official endorsement or acceptance by IOM.

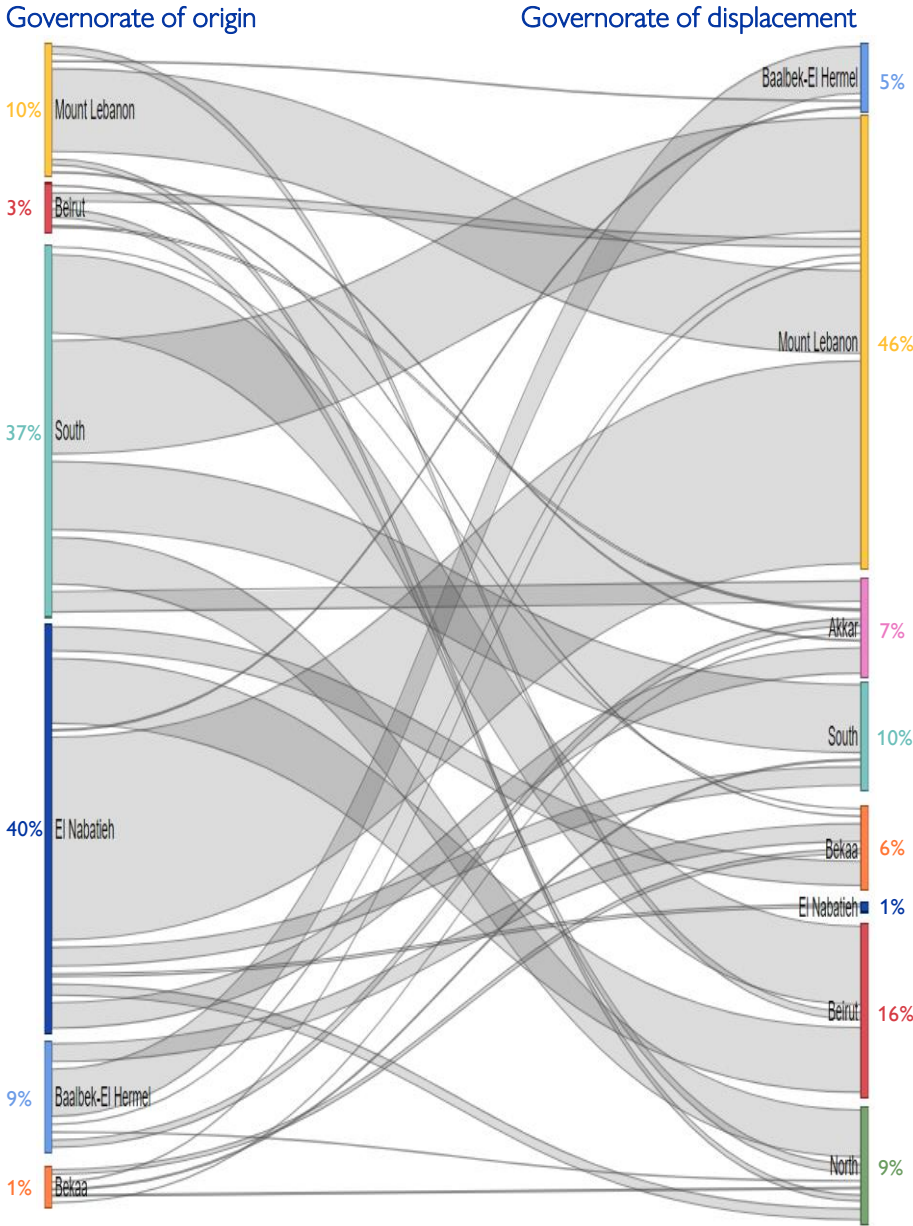
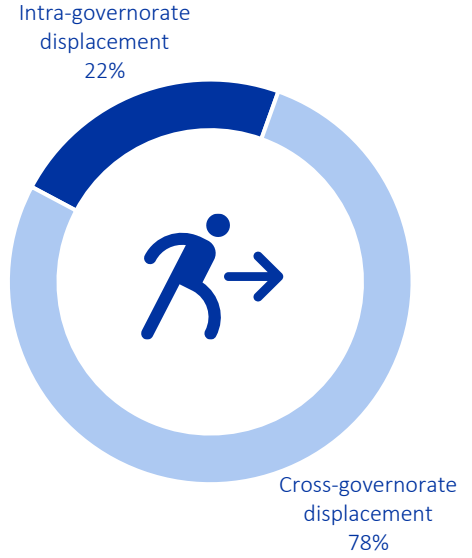
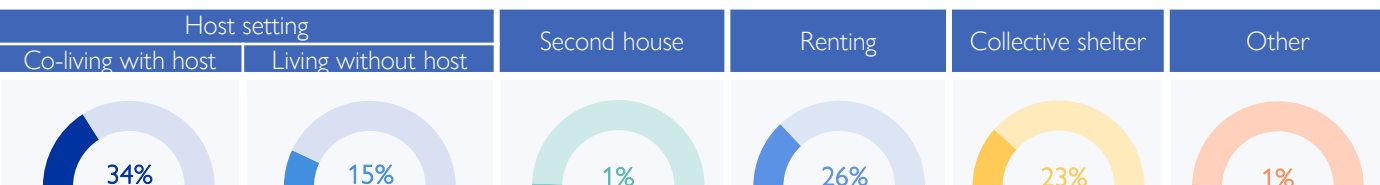


Chart 3: Displacement trends



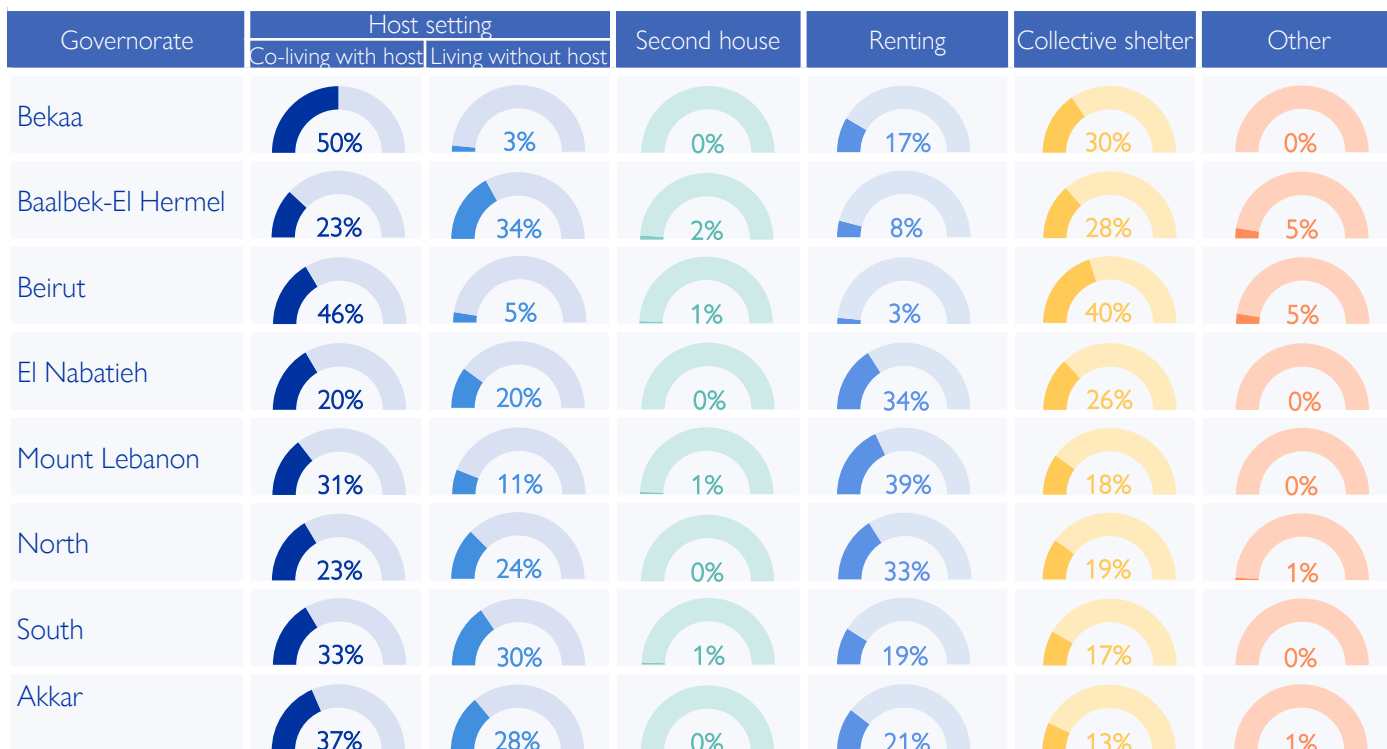
Overall, 78% of the displacement has occurred outside the boundaries of the IDPs' governorate of origin. While 40% (333,436) of the IDPs originate from El Nabatieh, of this population 99% fled to locations outside the boundaries of the governorate. Similarly, in the South governorate, where 37% (315,253) of IDPs originated, 81% of these IDPs chose to move outside the boundaries of the governorate. However, in Mount Lebanon governorate, where 10% (82,355) of IDPs originated, 82% of these IDPs chose to move internally within the boundaries of the governorate.

IDPs distribution by shelter type – By Governorate



Around 49% of IDPs are currently living in host settings, around 23% are housed in 1,015 collective shelters, while 26% have opted for rental housing. Another 1% have relocated to their secondary residences. Meanwhile, 1% are categorized under “other”, this includes unfinished buildings, tents, parks, on the streets, or self-settled sites.

Of the 49% in host settings, 281,115 are co-living with non-internally displaced families, while 124,160 reside separately. Notably, 65% of the 405,275 individuals in host settings are living in overcrowded conditions according to the perception of IOM DTM key informants.



Displacement demographics

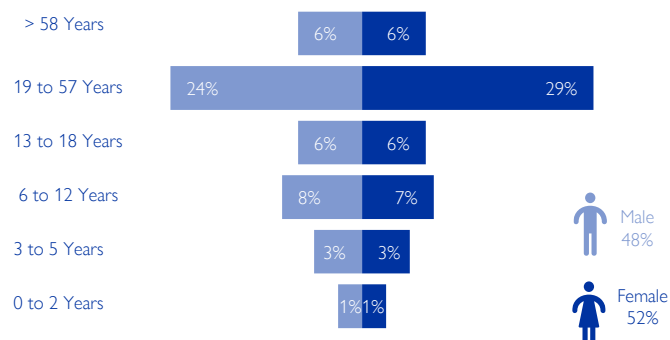


Chart 4: Displacement demographics

35% of IDPs are children (< 18 years), while 35% are female adults and 30% are male adults.

Note: These figures represent sample data of 2 households per location provided by key informants and do not reflect the entire IDP population in each area.

Methodology

The objective of the Mobility Snapshot is to support the humanitarian community in preparedness and response planning. Multi-layered data is routinely captured through Rounds using a suite of methodological tools designed to track and monitor displacement. These tools are in line with the [DTM Global Methodological Framework](#).

Data is collected nationwide through a combination of face-to-face and remote data collection methods, utilizing a network of over 50 enumerators and 1,500 key informants. These key informants consist of government officials, mukhtars, community representatives, and neighborhood focal points.

The following citation is required when using any data and information included in this information product: "International Organization for Migration (IOM), October 2024. DTM Mobility Snapshot, Round 57 IOM, Lebanon". For more information on terms and conditions of DTM reports and information products, please refer to <https://dtm.iom.int/terms-and-conditions>.