



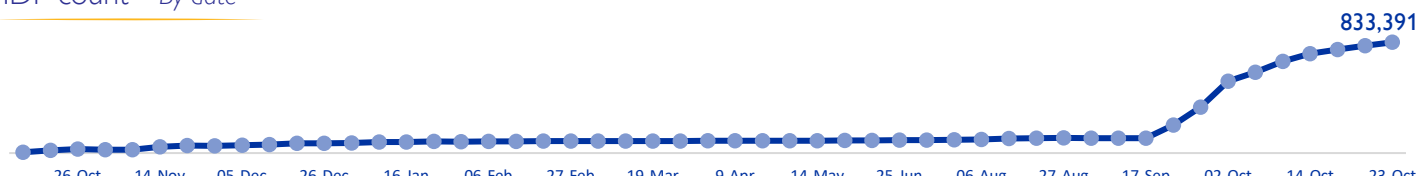
MOBILITY SNAPSHOT – Round 56

Report Production Date: 24 October 2024 | Data collected up till 4 pm on 23 October 2024

Overview

The International Organization for Migration (IOM) conducts daily monitoring of population movements to support preparedness and response efforts. This work is carried out in partnership with the Disaster Risk Management Unit, technically supported by the United Nations Development Programme, to triangulate and verify data from IOM's mobility tracking exercise and the Lebanese Red Cross household registration exercise.

IDP count – By date



IDPs by district of arrival and district of origin



833,391 (52% female and 48% male)
Total displaced individuals



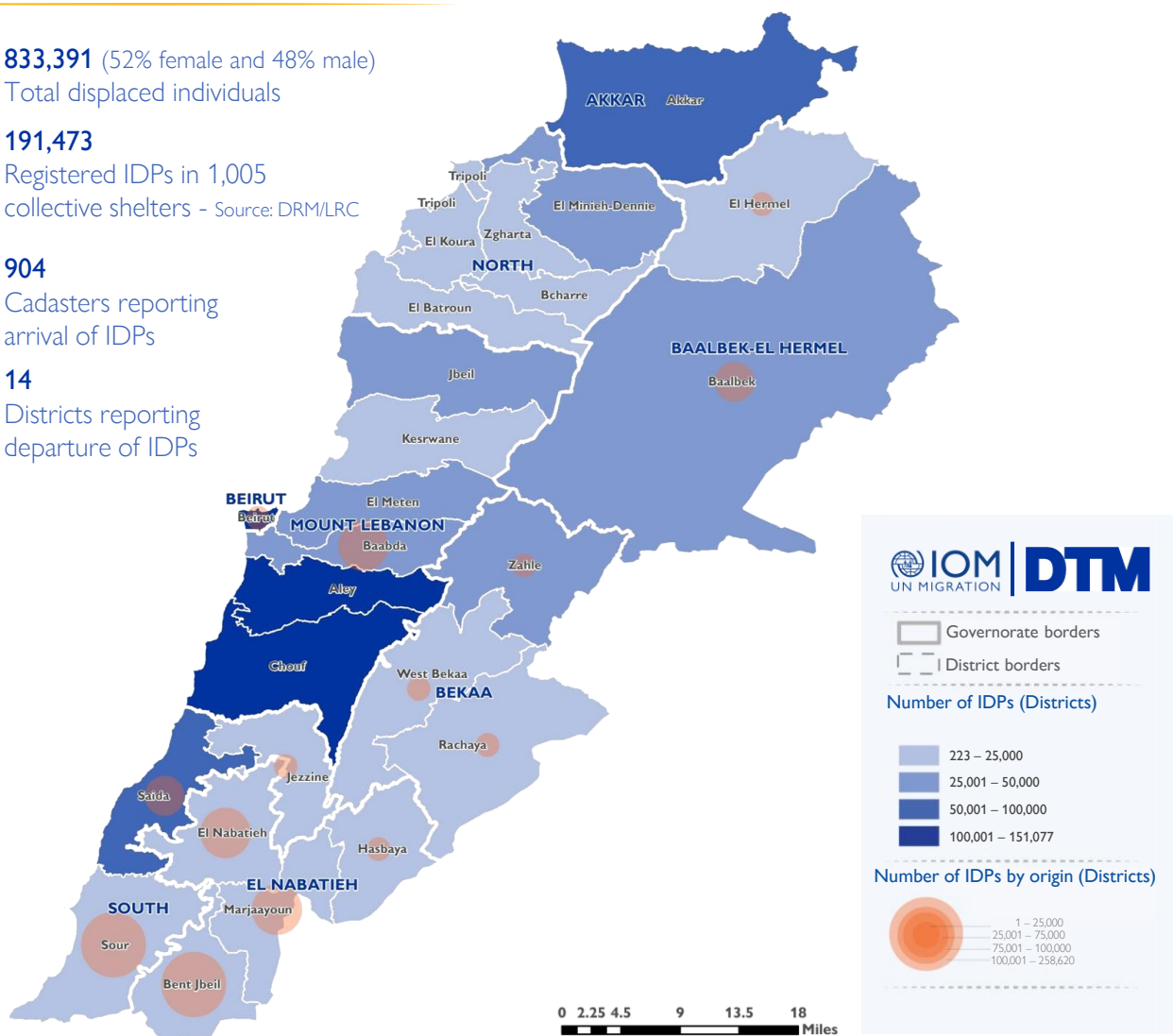
191,473
Registered IDPs in 1,005 collective shelters - Source: DRM/LRC



904
Cadasters reporting arrival of IDPs



14
Districts reporting departure of IDPs



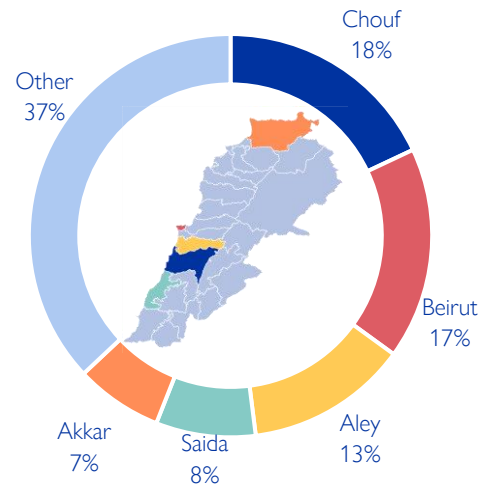
This map is for illustration purposes only. Names and boundaries on this map do not imply official endorsement or acceptance by IOM.

*DRM/LRC conducts household level registration for IDPs to inform direct assistance. This complements IOM's mobility tracking which captures an estimate of the total IDP population to inform national preparedness and response planning, as well as resource mobilisation.

Displacement within Lebanon – By district of arrival

Governorate	District	# of Cadasters	IDPs
Mount Lebanon	Chouf	83	151,077
Beirut	Beirut	11	142,117
Mount Lebanon	Aley	62	106,953
South	Saida	26	67,168
Akkar	Akkar	134	57,114
Baalbek-El Hermel	Baalbek	25	44,813
Mount Lebanon	El Meten	75	40,838
Mount Lebanon	Jbeil	69	40,185
Bekaa	Zahle	39	27,770
Mount Lebanon	Baabda	47	27,219
North	El Minieh-Dennie	44	25,025
Bekaa	West Bekaa	24	16,626
Mount Lebanon	Kesrwane	52	15,288
North	Zgharta	26	14,760
North	El Koura	39	12,380
North	Tripoli	11	12,066
South	Jezzine	30	7,688
South	Sour	1	7,326
North	El Batroun	52	6,287
Bekaa	Rachaya	19	4,023
El Nabatieh	Hasbaya	11	2,331
North	Bcharre	12	2,294
El Nabatieh	Bent Jbeil	2	770
El Nabatieh	El Nabatieh	7	593
Baalbek-El Hermel	El Hermel	1	450
El Nabatieh	Marjaayoun	2	230
Total		904	833,391

Chart 1: IDPs distribution by district of arrival

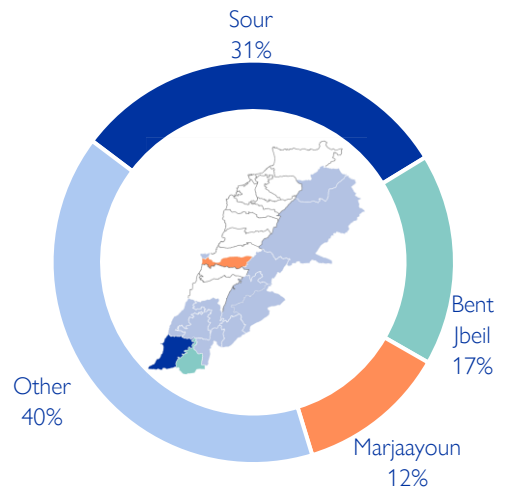


As of 23 October, Lebanon has recorded 833,391 internally displaced persons (IDPs), showing around 3% increase since 20 October. IDPs have sought safety in 1,081 locations (villages or neighbourhoods) across 904 cadasters throughout Lebanon. Displacement has been observed in 26 out of the 26 districts across all eight governorates. 63% of the IDPs are in five districts out of the total 26 districts hosting IDPs—specifically, Chouf, Beirut, Aley, Saida, and Akkar.

Displacement within Lebanon – By district of departure

Governorate	District	IDPs
South	Sour	258,620
El Nabatieh	Bent Jbeil	143,155
El Nabatieh	Marjaayoun	96,321
Mount Lebanon	Baabda	93,264
El Nabatieh	El Nabatieh	81,310
Baalbek-El Hermel	Baalbek	70,142
South	Saida	47,731
Beirut	Beirut	22,043
El Nabatieh	Hasbaya	8,563
Bekaa	West Bekaa	6,039
Baalbek-El Hermel	El Hermel	2,973
Bekaa	Zahle	1,542
South	Jezzine	1,063
Bekaa	Rachaya	625
Total		833,391

Chart 2: IDPs distribution by district of departure



The majority of IDPs (60%) originate from three districts. These three districts span along the Southern border of Lebanon. Specifically, 31% are from Sour, 17% are from Bent Jbeil, and 12% are from Marjaayoun. The remaining 40% originate from 11 different districts.

New displacement within Lebanon – By district of arrival

Governorate	District	# of Cadasters	IDPs
Mount Lebanon	Aley	14	10,540
Baalbek-El Hermel	Baalbek	4	5,300
Bekaa	West Bekaa	5	4,800
Mount Lebanon	Chouf	10	3,742
Akkar	Akkar	27	2,227
Mount Lebanon	El Meten	13	1,165
South	Saida	7	1,065
Mount Lebanon	Kesrwane	7	996
Mount Lebanon	Baabda	10	829
Mount Lebanon	Jbeil	8	321
North	El Batroun	3	178
Bekaa	Zahle	1	150
North	Tripoli	4	145
South	Jezzine	4	132
El Nabatieh	Hasbaya	2	79
Beirut	Beirut	1	77
North	El Koura	2	40
North	El Minieh-Dennie	2	17
El Nabatieh	Marjaayoun	1	7
North	Bcharre	1	4
Total		126	31,814

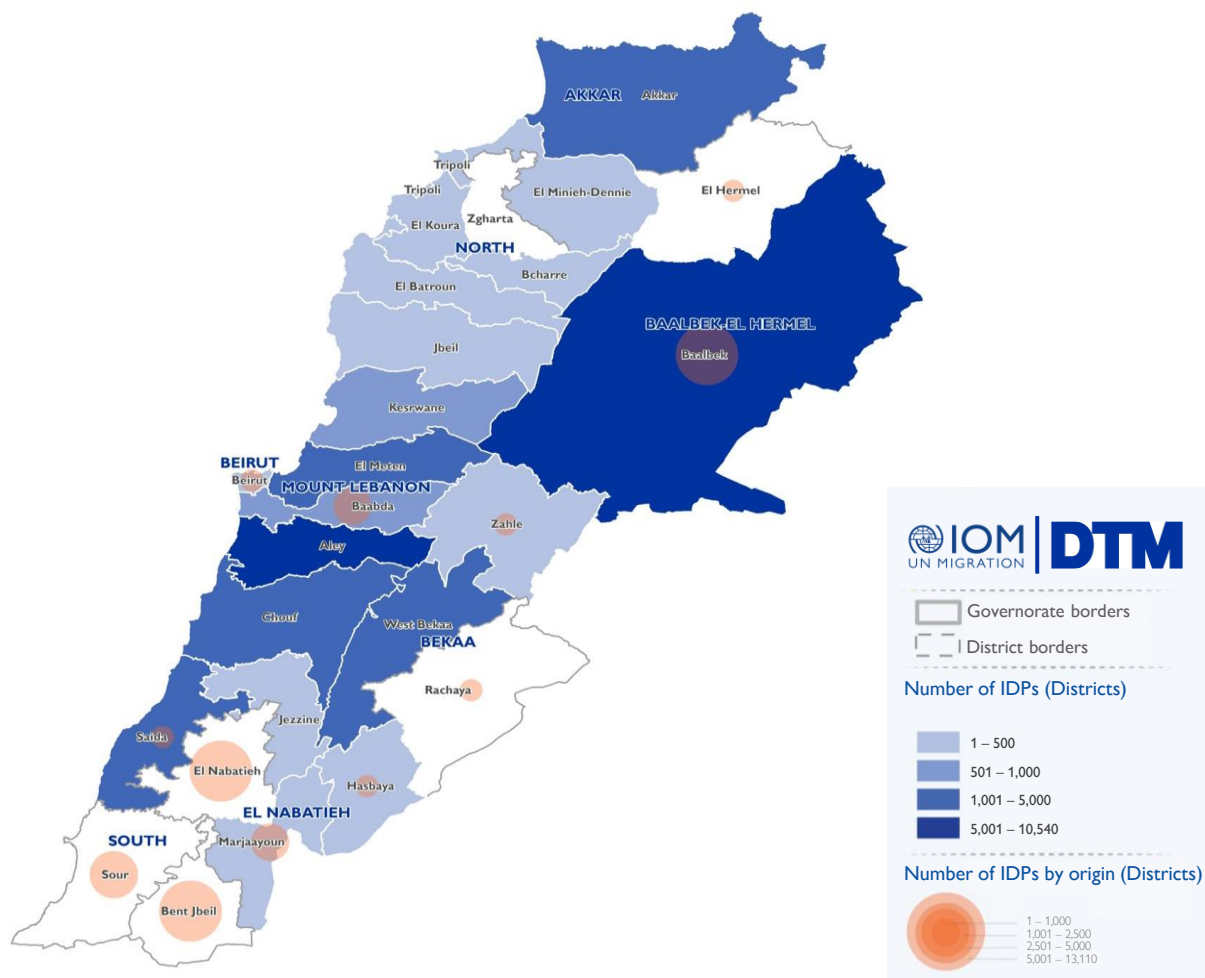
In the past week, there have been 31,814 new displacements. These individuals might be experiencing displacement for the first time or undergoing secondary movement.

The majority of newly displaced individuals come from Bent Jbeil (41%), El Nabatieh (19%), Baalbek (18%), Sour (9%), and Baabda (5%) districts. The remaining 8% relocated from Marjaayoun, Beirut, Saida, Hasbaya, Zahle, Rachaya, and El Hermel districts.

Over the past week, the top five destinations (districts) for newly displaced individuals were Aley (33%), Baalbek (17%), West Bekaa (15%), Chouf (12%), and Akkar (7%).

The increase in total number of IDPs may not always align with the number of new arrivals within a specific period. This difference often occurs when Key Informants (KIs) report cumulative totals that include previously uncounted IDPs.

Newly arrived IDPs by cadaster of arrival and district of origin



This map is for illustration purposes only. Names and boundaries on this map do not imply official endorsement or acceptance by IOM.

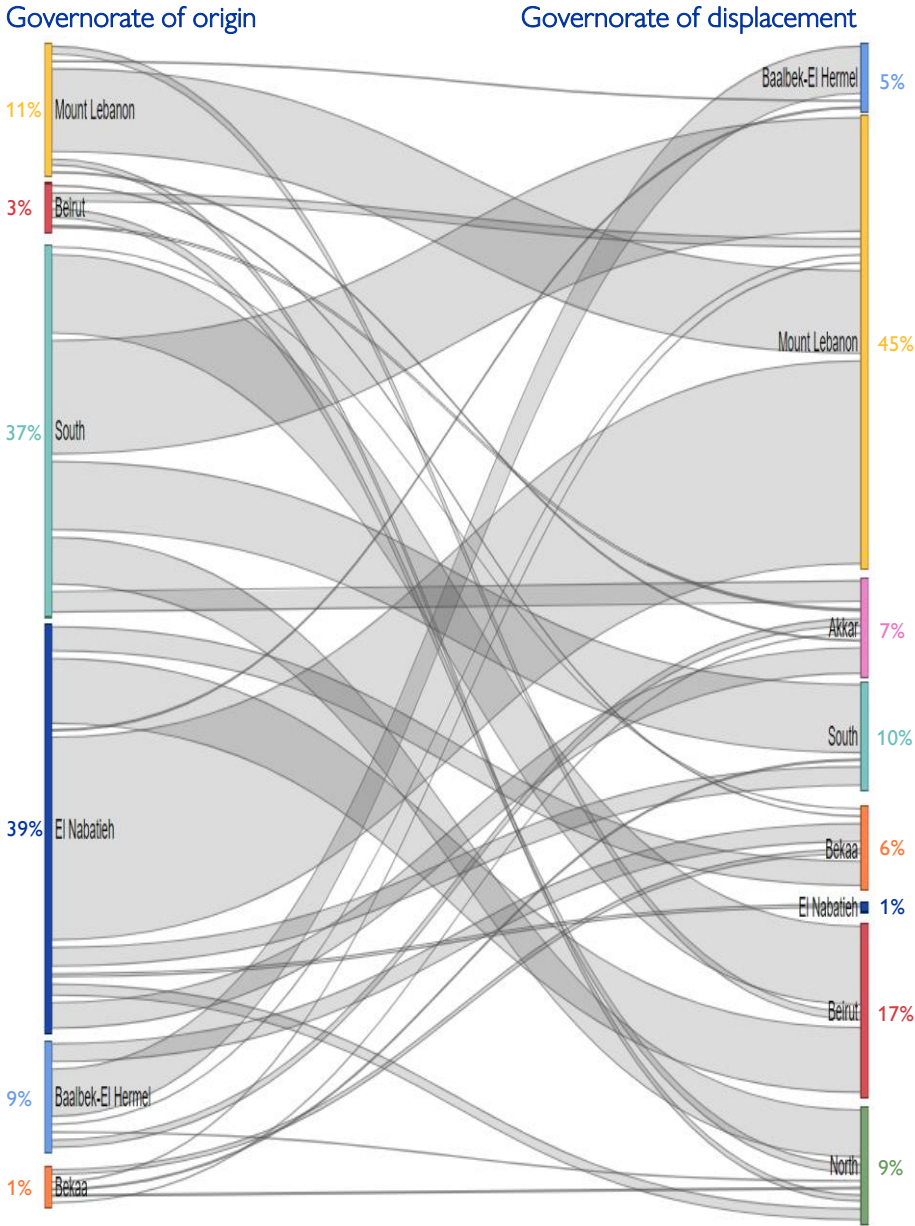
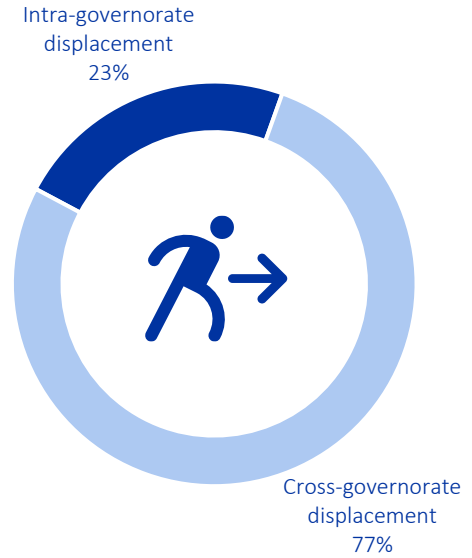
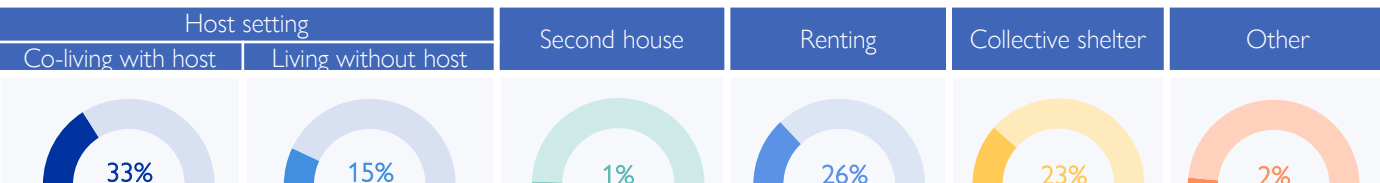


Chart 3: Displacement trends



Overall, 77% of the displacement has occurred outside the boundaries of the IDPs' governorate of origin. While 39% (329,349) of the IDPs originate from El Nabatieh, of this population 99% fled to locations outside the boundaries of the governorate. Similarly, in the South governorate, where 37% (307,414) of IDPs originated, 79% of these IDPs chose to move outside the boundaries of the governorate. However, in Mount Lebanon governorate, where 11% (93,264) of IDPs originated, 83% of these IDPs chose to move internally within the boundaries of the governorate.

IDPs distribution by shelter type – By Governorate



Around 48% of IDPs are currently living in host settings, around 23% are housed in 1,005 collective shelters, while 26% have opted for rental housing. Another 1% have relocated to their secondary residences. Meanwhile, 2% are categorized under “other”, this includes unfinished buildings, tents, parks, on the streets, or self-settled sites.

Of the 48% in host settings, 277,631 are co-living with non-internally displaced families, while 123,788 reside separately. Notably, 66% of the 401,419 individuals in host settings are living in overcrowded conditions according to the perception of IOM DTM key informants.

Governorate	Host setting		Second house	Renting	Collective shelter	Other
	Co-living with host	Living without host				
Bekaa	50%	2%	0%	17%	31%	0%
Baalbek-El Hermel	24%	34%	2%	8%	27%	5%
Beirut	44%	4%	1%	3%	38%	10%
El Nabatieh	27%	20%	0%	27%	26%	0%
Mount Lebanon	31%	11%	1%	38%	19%	0%
North	21%	24%	0%	34%	20%	1%
South	32%	31%	1%	19%	17%	0%
Akkar	37%	28%	0%	21%	13%	1%

Displacement demographics

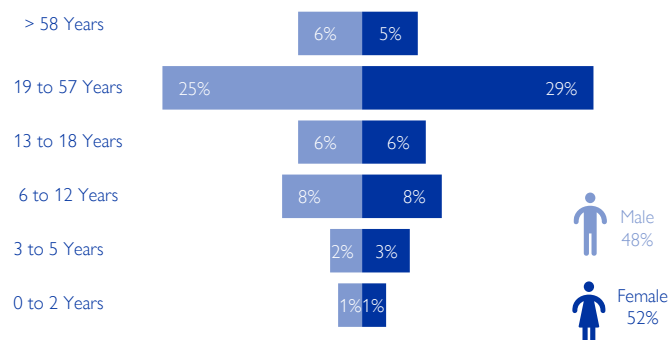


Chart 4: Displacement demographics – Based on Round 45

35% of IDPs are children (< 18 years), while 34% are female adults and 31% are male adults.

Note: These figures represent sample data of 2 households per location provided by key informants and do not reflect the entire IDP population in each area.

Methodology

The objective of the Mobility Snapshot is to support the humanitarian community in preparedness and response planning. Multi-layered data is routinely captured through Rounds using a suite of methodological tools designed to track and monitor displacement. These tools are in line with the [DTM Global Methodological Framework](#).

Data is collected nationwide through a combination of face-to-face and remote data collection methods, utilizing a network of over 50 enumerators and 1,500 key informants. These key informants consist of government officials, mukhtars, community representatives, and neighborhood focal points.

The following citation is required when using any data and information included in this information product: "International Organization for Migration (IOM), October 2024. DTM Mobility Snapshot, Round 56 IOM, Lebanon". For more information on terms and conditions of DTM reports and information products, please refer to <https://dtm.iom.int/terms-and-conditions>.