

MOBILITY SNAPSHOT – Round 51

Report Production Date: 07 October 2024 | Data collected up till 4 pm on 06 October 2024

Overview

The International Organization for Migration (IOM) conducts daily monitoring of population movements to support preparedness and response efforts.

This work is carried out in partnership with the Disaster Risk Management Unit, technically supported by the United Nations Development Programme, to triangulate and verify data from IOM's mobility tracking exercise and the Lebanese Red Cross household registration exercise.

IDP count – By date



IDPs by district of arrival and district of origin



608,509 (52% female and 48% male)
Total displaced individuals



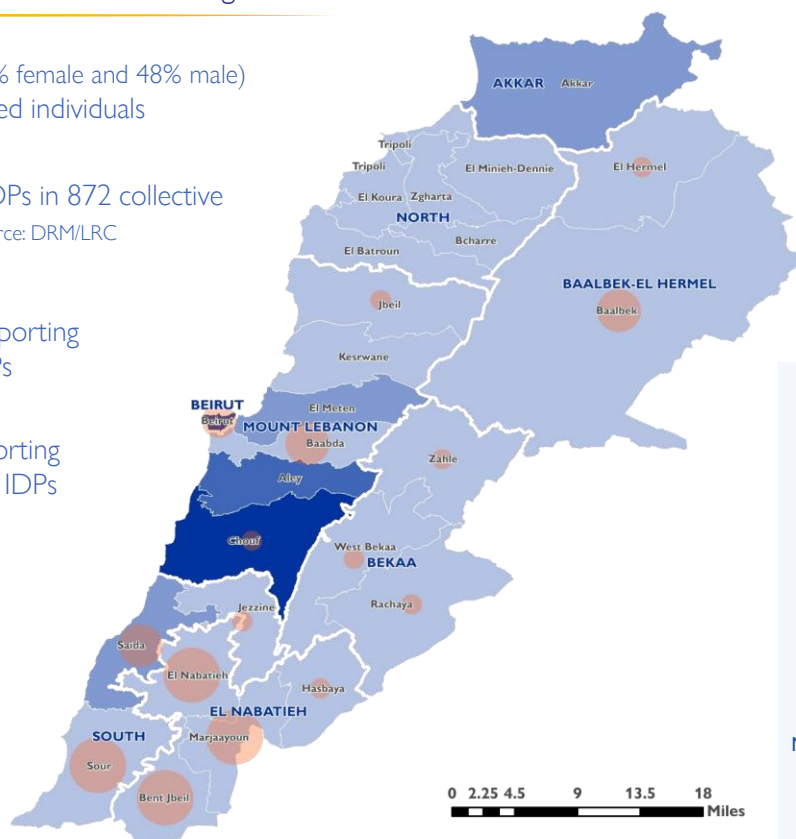
174,126
Registered IDPs in 872 collective shelters - Source: DRM/LRC



867
Cadasters reporting arrival of IDPs

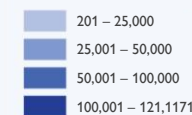


16
Districts reporting departure of IDPs

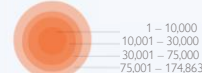


□ Governorate borders
□ District borders

Number of IDPs (Cadasters)



Number of IDPs by origin (Districts)



This map is for illustration purposes only. Names and boundaries on this map do not imply official endorsement or acceptance by IOM.

Cross border movements via land, sea and air borders

Mode of travel	Regular		Irregular		Total
	Lebanese	Syrians	Lebanese	Syrians	
Land	90,680	75,939	-	104,300	270,919
Air	44,425	10,285	-	-	54,710
Sea	916	218	-	-	1,134
Total	136,021	86,442	-	104,300	326,763



326,763
Lebanese and Syrian individuals have departed Lebanon since 23 September

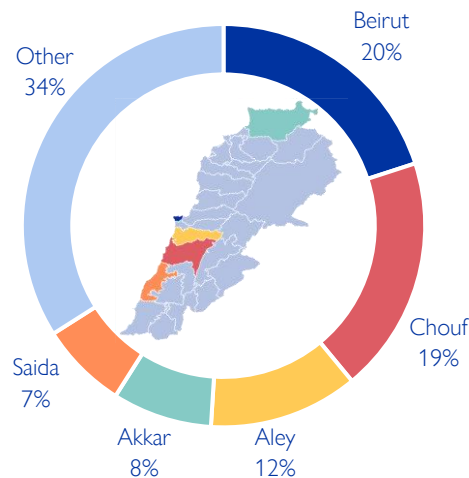
Source: Lebanese authorities (23 September - 4 October 2024)

*DRM/LRC conducts household level registration for IDPs to inform direct assistance. This complements IOM's mobility tracking which captures an estimate of the total IDP population to inform national preparedness and response planning, as well as resource mobilisation.

Displacement within Lebanon – By district of arrival

Governorate	District	# of Cadasters	IDPs
Beirut	Beirut	11	121,171
Mount Lebanon	Chouf	80	115,138
Mount Lebanon	Aley	60	70,257
Akkar	Akkar	128	46,595
South	Saida	28	44,412
Mount Lebanon	El Meten	72	26,526
Mount Lebanon	Jbeil	62	23,981
Baalbek-El Hermel	Baalbek	28	23,146
Bekaa	Zahle	39	20,765
Mount Lebanon	Baabda	44	18,459
North	El Minieh-Dennie	42	13,628
North	Zgharta	24	12,773
Mount Lebanon	Kesrwane	49	12,719
Bekaa	West Bekaa	22	12,124
North	El Koura	36	10,670
North	Tripoli	10	9,075
South	Sour	2	8,493
North	El Batroun	48	5,403
South	Jezzine	30	4,708
Bekaa	Rachaya	17	2,892
El Nabatieh	Hasbaya	12	2,288
El Nabatieh	El Nabatieh	6	1,186
North	Bcharre	11	1,015
Baalbek-El Hermel	El Hermel	2	535
El Nabatieh	Bent Jbeil	2	349
El Nabatieh	Marjaayoun	2	201
Total		867	608,509

Chart 1: IDPs distribution by district of arrival

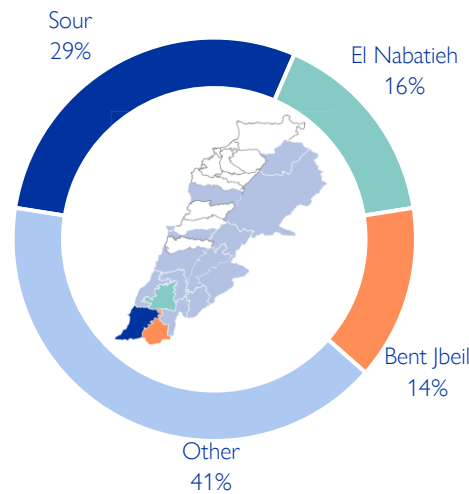


As of 7 October, Lebanon has recorded 608,509 internally displaced persons (IDPs), showing around 12% increase since 2 October. IDPs have sought safety in 1,049 locations (villages or neighbourhoods) across 867 cadasters throughout Lebanon. Displacement has been observed in 26 out of the 26 districts across all eight governorates. 66% of the IDPs are in five districts out of the total 26 districts hosting IDPs—specifically, Beirut, Chouf, Aley, Akkar, and Saida.

Displacement within Lebanon – By district of departure

Governorate	District	IDPs
South	Sour	174,863
El Nabatieh	El Nabatieh	96,816
El Nabatieh	Bent Jbeil	86,477
El Nabatieh	Marjaayoun	81,553
Mount Lebanon	Baabda	62,495
South	Saida	34,881
Baalbek-El Hermel	Baalbek	34,242
Beirut	Beirut	17,747
El Nabatieh	Hasbaya	8,986
Bekaa	West Bekaa	4,004
Baalbek-El Hermel	El Hermel	2,845
South	Jezzine	1,235
Bekaa	Zahle	1,128
Bekaa	Rachaya	727
Mount Lebanon	Chouf	495
Mount Lebanon	Jbeil	15
Total		608,509

Chart 2: IDPs distribution by district of departure



The majority of IDPs (59%) originate from three districts. These three districts span along the Southern border of Lebanon. Specifically, 29% are from Sour, 16% are from El Nabatieh, and 14% are from Bent Jbeil. The remaining 41% originate from 13 different districts.

New displacement within Lebanon – By district of arrival

Governorate	District	# of Cadasters	IDPs
Mount Lebanon	Aley	28	28,834
Mount Lebanon	Chouf	36	16,198
Akkar	Akkar	90	12,380
Bekaa	West Bekaa	6	6,601
South	Saida	15	6,369
Mount Lebanon	Baabda	21	5,989
Beirut	Beirut	7	5,725
North	El Minieh-Dennie	30	4,478
Mount Lebanon	El Meten	34	4,430
North	El Koura	18	2,826
Mount Lebanon	Jbeil	22	2,665
Baalbek-El Hermel	Baalbek	7	2,010
North	Tripoli	6	1,545
Mount Lebanon	Kesrwane	24	1,540
North	Zgharta	7	1,150
North	El Batroun	28	1,016
Bekaa	Zahle	6	920
South	Jezzine	10	897
El Nabatieh	Hasbaya	10	738
South	Sour	1	500
North	Bcharre	6	499
Bekaa	Rachaya	6	452
El Nabatieh	El Nabatieh	1	50
Total		419	107,812

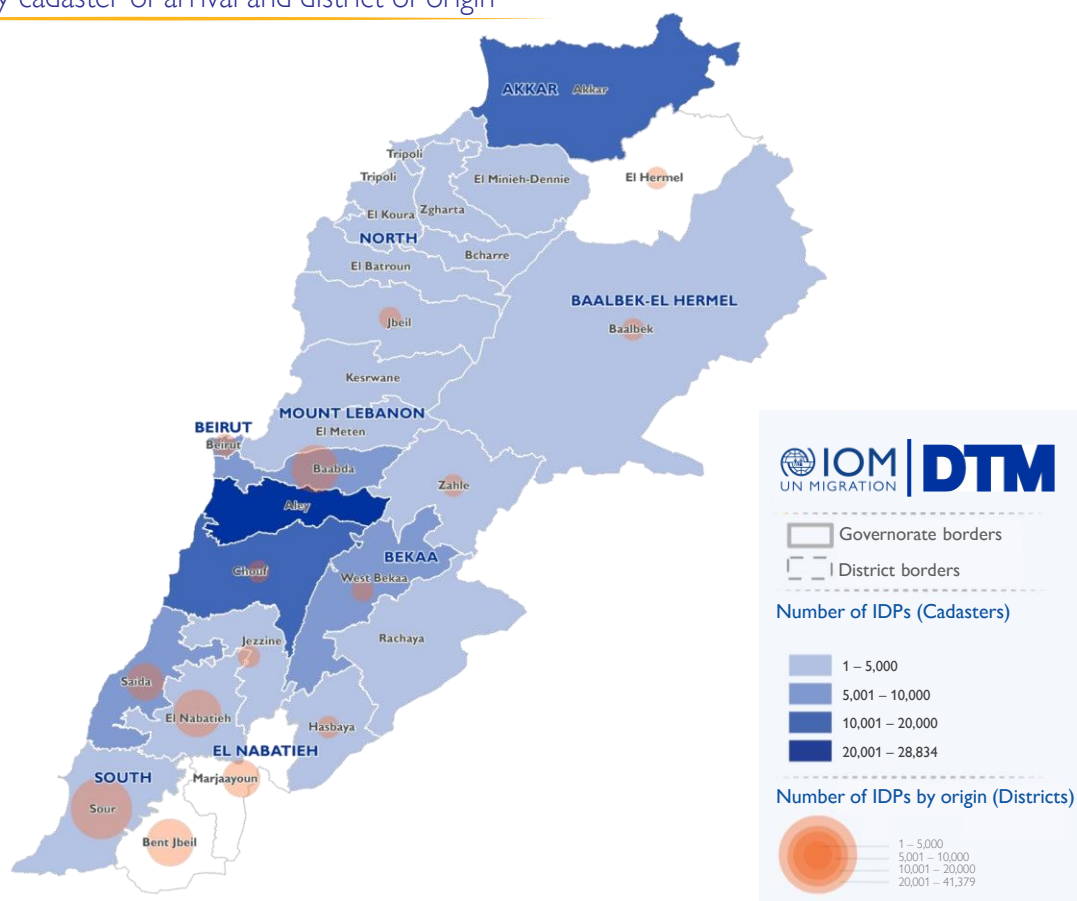
In the past week, there have been 107,812 new displacements. These individuals might be experiencing displacement for the first time or undergoing secondary movement.

The majority of newly displaced individuals come from Sour (38%), El Nabatieh (14%), Bent Jbeil (13%), Baabda (10%), and Marjaayoun (8%) districts. The remaining 17% relocated from Saida, Baalbek, Beirut, Hasbaya, West Bekaa, El Hermel, Zahle, Chouf, Jezzine, and Jbeil districts.

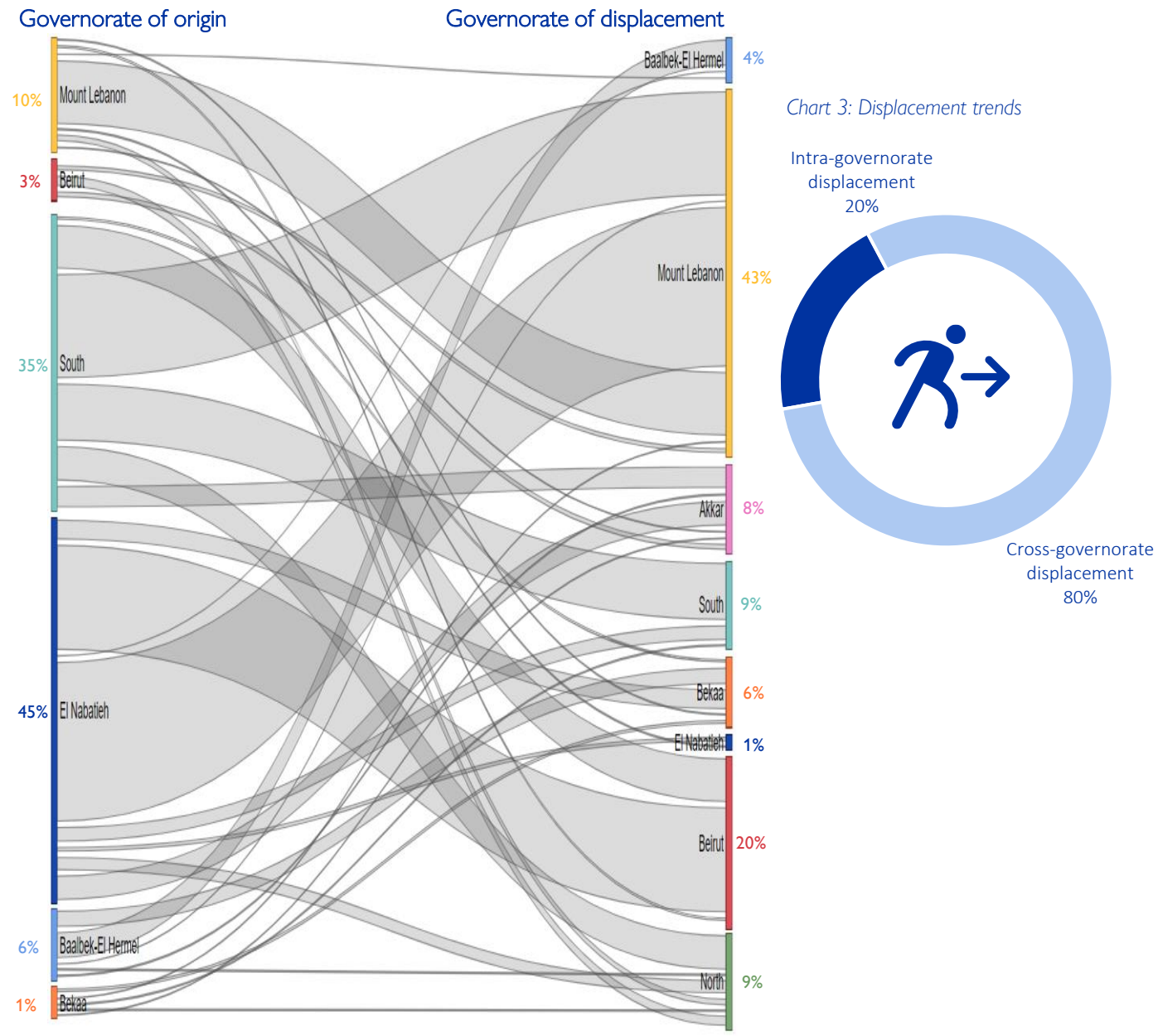
Over the past week, the top five destinations (districts) for newly displaced individuals were Aley (27%), Chouf (15%), Akkar (11%), West Bekaa (6%), and Saida (6%).

The increase in total number of IDPs may not always align with the number of new arrivals within a specific period. This difference often occurs when Key Informants (KIs) report cumulative totals that include previously uncounted IDPs.

Newly arrived IDPs by cadaster of arrival and district of origin

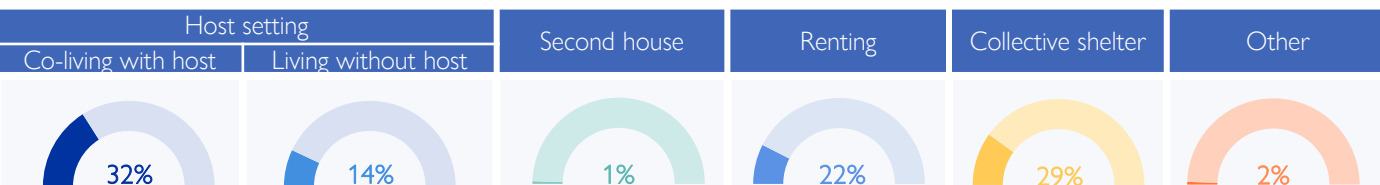


This map is for illustration purposes only. Names and boundaries on this map do not imply official endorsement or acceptance by IOM.



Overall, 80% of the displacement has occurred outside the boundaries of the IDPs' governorate of origin. While 45% (273,832) of the IDPs originate from EI Nabatieh, of this population 99% fled to locations outside the boundaries of the governorate. Similarly, in the South governorate, where 35% (210,979) of IDPs originated, 78% of these IDPs chose to move outside the boundaries of the governorate. However, in Mount Lebanon governorate, where 10% (63,005) of IDPs originated, 80% of these IDPs chose to move internally within the boundaries of the governorate.

IDPs distribution by shelter type – By Governorate



Around 46% of IDPs are currently living in host settings, around 29% are housed in 872 collective shelters, while 22% have opted for rental housing. Another 1% have relocated to their secondary residences. Meanwhile, 2% are living in unfinished buildings, tents, parks, on the streets, or self-settled.

Of the 46% in host settings, 194,460 are co-living with non-internally displaced families, while 86,263 reside separately. Notably, 65% of the 280,723 individuals in host settings are living in overcrowded conditions according to the perception of IOM DTM key informants.

Governorate	Host setting		Second house	Renting	Collective shelter	Other
	Co-living with host	Living without host				
Bekaa	43%	2%	0%	14%	40%	1%
Baalbek-El Hermel	12%	22%	4%	1%	51%	10%
Beirut	48%	3%	1%	3%	39%	6%
El Nabatieh	22%	24%	0%	29%	25%	0%
Mount Lebanon	28%	13%	1%	34%	24%	0%
North	17%	27%	0%	26%	27%	3%
South	29%	26%	1%	20%	24%	0%
Akkar	36%	28%	0%	16%	14%	6%

Displacement demographics

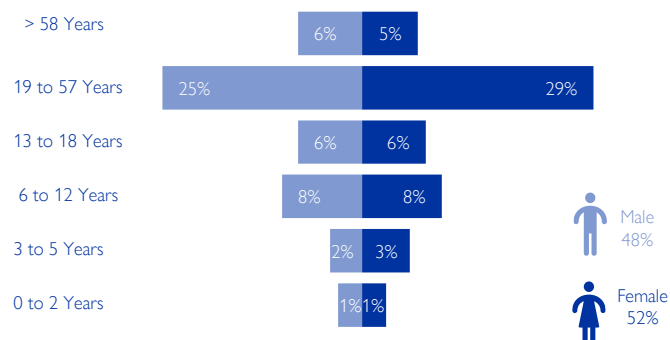


Chart 4: Displacement demographics – Based on Round 45

35% of IDPs are children (< 18 years), while 34% are female adults and 31% are male adults.

Note: These figures represent sample data of 2 households per location provided by key informants and do not reflect the entire IDP population in each area.

Methodology

The objective of the Mobility Snapshot is to support the humanitarian community in preparedness and response planning. Multi-layered data is routinely captured through Rounds using a suite of methodological tools designed to track and monitor displacement. These tools are in line with the [DTM Global Methodological Framework](#).

Data is collected nationwide through a combination of face-to-face and remote data collection methods, utilizing a network of over 50 enumerators and 1,500 key informants. These key informants consist of government officials, mukhtars, community representatives, and neighborhood focal points.

The following citation is required when using any data and information included in this information product: "International Organization for Migration (IOM), September 2024. DTM Mobility Snapshot, Round 51 IOM, Lebanon". For more information on terms and conditions of DTM reports and information products, please refer to <https://dtm.iom.int/terms-and-conditions>.