

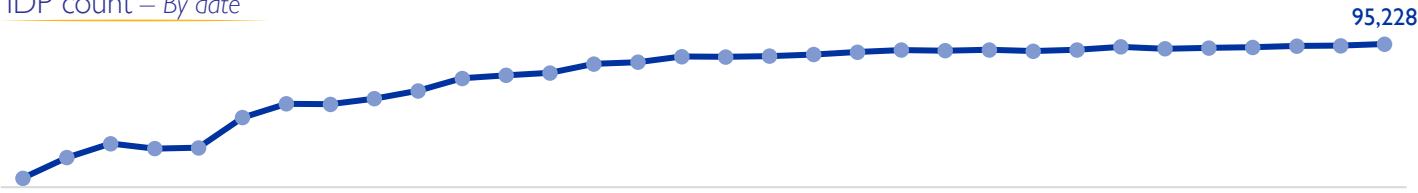
MOBILITY SNAPSHOT – Round 37

Report Production Date: 13 June 2024 | Data collected up till 4 pm on 11 June 2024

Overview

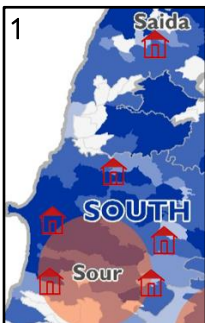
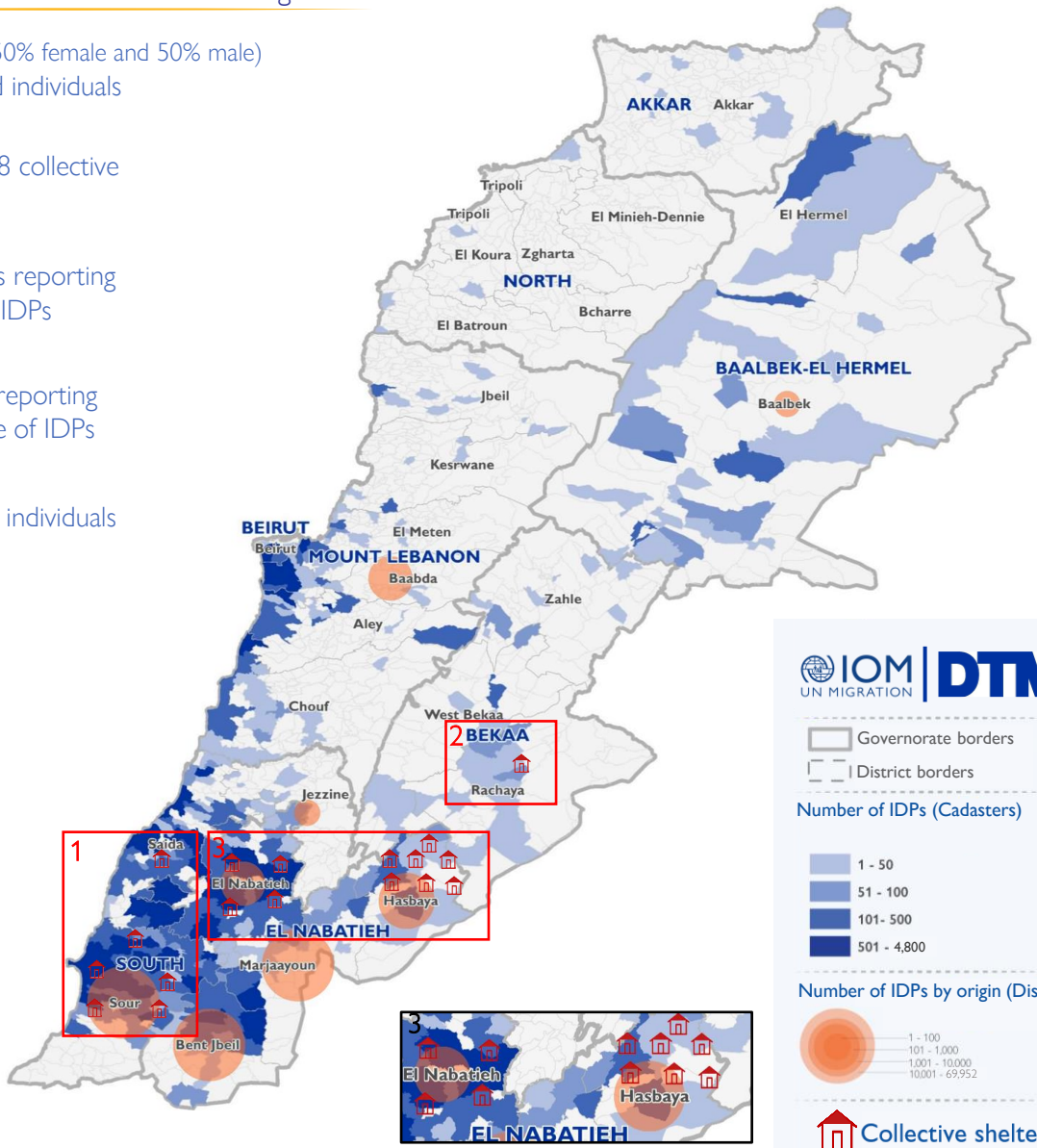
Armed confrontations have been occurring at the Southern Lebanese border since the 8 October 2023. As a consequence, several thousand families from South Lebanon have fled their homes. The International Organization for Migration (IOM) conducts daily monitoring of population movements, with the objective of informing preparedness and response planning. Population numbers for collective shelters have been directly provided from the data collected at the level of the emergency operations rooms, supported by the Lebanese Red Cross, (LRC) and the Disaster Risk Management (DRM) Unit.

IDP count – By date

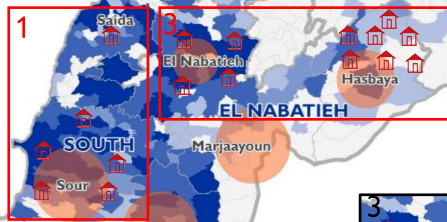


IDPs by cadaster of arrival and district of origin

- 95,228** (50% female and 50% male)
Displaced individuals
- 1,498**
IDPs in 18 collective shelters
- 339**
Cadasters reporting arrival of IDPs
- 8**
Districts reporting departure of IDPs
- 150**
Returnee individuals



Source: LRC-DRR, DRM



Source: LRC-DRR, DRM



Number of IDPs (Cadasters)

- 1 - 50
- 51 - 100
- 101 - 500
- 501 - 4,800

Number of IDPs by origin (Districts)

- 1 - 100
- 101 - 1,000
- 1,001 - 10,000
- 10,001 - 69,952

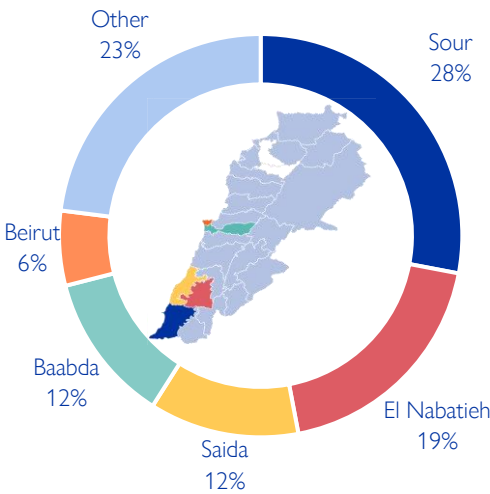
Collective shelter

This map is for illustration purposes only. Names and boundaries on this map do not imply official endorsement or acceptance by IOM.

Displacement within Lebanon – By district of arrival

Governorate	District	# of Cadasters	# of Locations	IDPs
South	Sour	52	63	26,474
El Nabatieh	El Nabatieh	38	38	18,398
South	Saida	43	55	11,392
Mount Lebanon	Baabda	13	20	11,273
Beirut	Beirut	7	12	5,588
El Nabatieh	Bent Jbeil	22	22	5,398
Mount Lebanon	Aley	14	25	5,021
Mount Lebanon	El Meten	20	25	3,352
Mount Lebanon	Chouf	21	35	2,208
El Nabatieh	Marjaayoun	14	14	1,726
Baalbek-El Hermel	Baalbek	22	25	1,582
El Nabatieh	Hasbaya	11	12	808
Bekaa	West Bekaa	8	8	513
Mount Lebanon	Jbeil	9	9	453
Bekaa	Rachaya	9	10	288
Baalbek-El Hermel	El Hermel	4	5	213
Bekaa	Zahle	9	9	184
Mount Lebanon	Kesrwane	4	4	168
Akkar	Akkar	9	11	114
South	Jezzine	5	5	37
North	El Batroun	2	2	26
North	El Koura	2	2	6
North	El Minieh-Dennie	1	1	6
Total		339	412	95,228

Chart 1: IDPs distribution by district of arrival

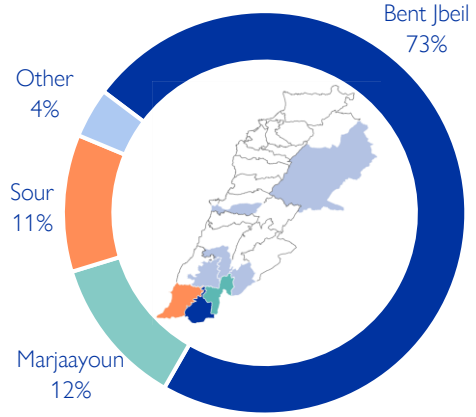


As of 11 June, Lebanon has recorded 95,228 internally displaced persons (IDPs), showing a 1% increase since 28 May. IDPs have sought safety in 412 locations (villages or neighbourhoods) across 339 cadasters throughout Lebanon. Displacement has been observed in 23 out of the 26 districts across all eight governorates. Most of the IDPs (77%) are in five districts out of the total 23 districts hosting IDPs—specifically, Sour, El Nabatieh, Saida, Baabda, and Beirut.

Displacement within Lebanon – By district of departure

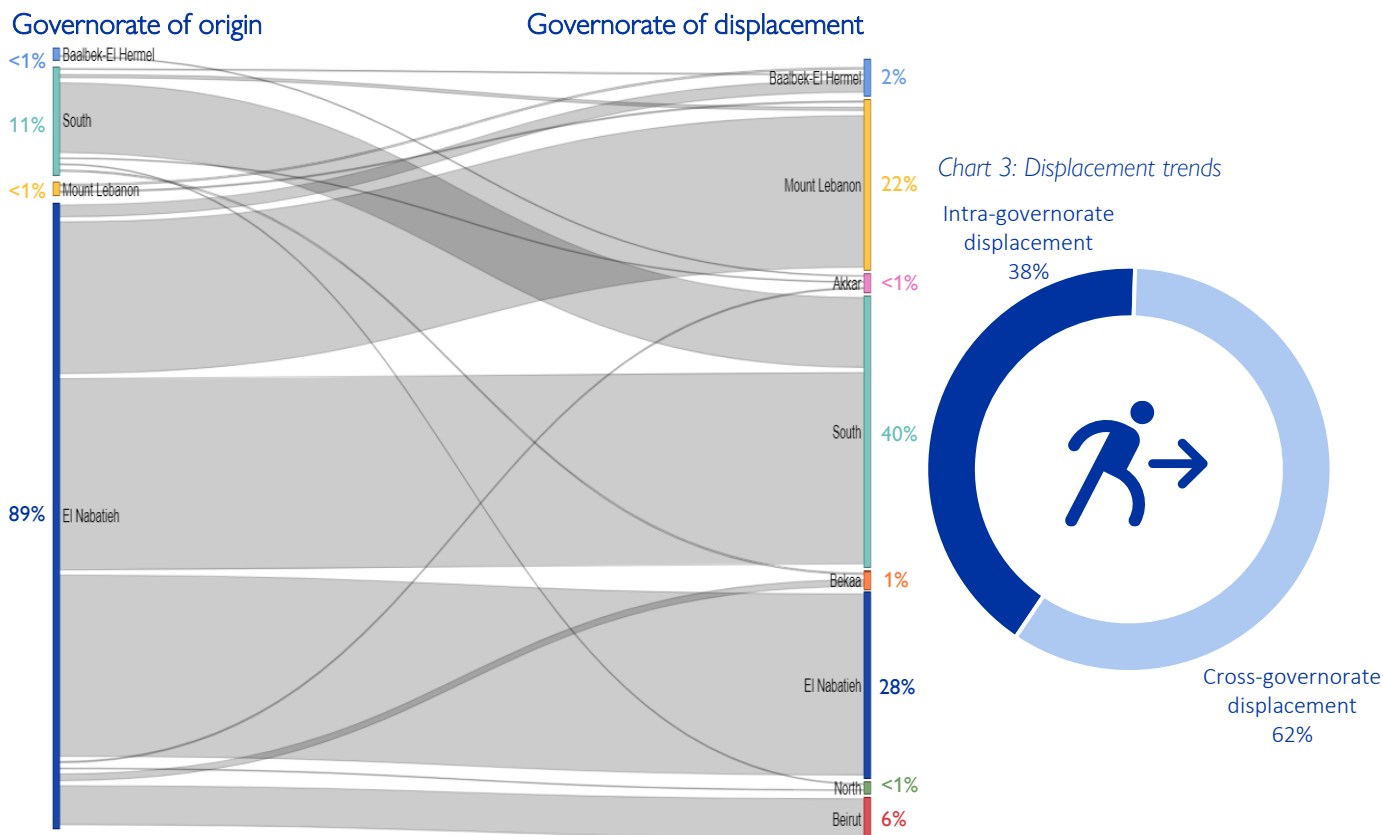
Governorate	District	IDPs
El Nabatieh	Bent Jbeil	69,952
El Nabatieh	Marjaayoun	11,570
South	Sour	10,622
El Nabatieh	Hasbaya	1,991
El Nabatieh	El Nabatieh	826
Mount Lebanon	Baabda	254
South	Jezzine	7
Baalbek-El Hermel	Baalbek	6
Total		95,228

Chart 2: IDPs distribution by district of departure



The majority of IDPs (96%) originate from three districts. These three districts span along the Southern border of Lebanon. Specifically, 73% are from Bent Jbeil, 12% are from Marjaayoun, and 11% are from Sour. The remaining 4% originate from seven different districts, Hasbaya, El Nabatieh, Baabda, Baalbek, and Jezzine.

Movement of IDPs from governorate of origin to governorate of displacement



Overall, 62% of the displacement has occurred outside the boundaries of the IDPs' governorate of origin. While 89% (84,339) of the IDPs originate from El Nabatieh, of this population 69% fled to locations outside the boundaries of El Nabatieh governorate. However, in the South governorate, where 11% (10,629) of IDPs originated, 95% of these IDPs chose to move internally within the governorate.

Arrivals in the last week – (4 June to 11 June)

Governorate	District	# of Cadasters	# of Locations	IDPs
Mount Lebanon	Aley	1	5	1,155
South	Sour	14	15	378
El Nabatieh	El Nabatieh	11	11	262
El Nabatieh	Bent Jbeil	5	5	126
South	Saida	7	7	109
Mount Lebanon	El Meten	1	1	100
Baalbek-EI Hermel	Baalbek	2	2	50
Beirut	Beirut	2	2	36
Mount Lebanon	Chouf	2	2	35
El Nabatieh	Marjaayoun	3	3	21
Mount Lebanon	Baabda	2	3	19
Bekaa	Rachaya	1	1	8
El Nabatieh	Hasbaya	1	1	2
Total		52	58	2,301

In the past week, 2,301 new displacements have been recorded in 52 cadasters across 13 districts. These individuals might be experiencing displacement for the first time or undergoing secondary movement. These individuals have arrived from Beirut, El Meten, Chouf, Hasbaya, Aley, Marjaayoun, Rachaya, Baabda, Saida, Bent Jbeil, Baalbek, Sour, El Nabatieh

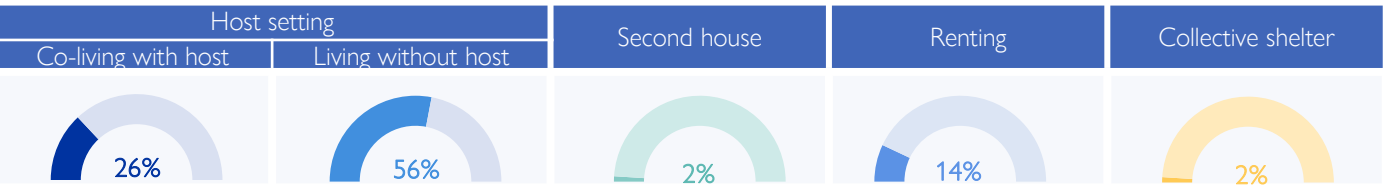
Return within Lebanon – By district *

Governorate	District	# of Cadasters	# of Locations	Returnees
El Nabatieh	Marjaayoun	1	1	150
Total		1	1	150

As of 11 June, 150 returnees have been identified in Marjaayoun district. These individuals have returned from El Nabatieh district.

* An IDP is identified as a returnee only if they have returned and stayed for over a week in their place of origin.

IDPs distribution by shelter type – By Governorate



Around 82% of IDPs are currently living in host settings, while 14% have opted for rental housing. Another 2% have relocated to their secondary residences. Around 2% are housed in 18 collective shelters.

Of the 82% in host settings, 24,789 are co-living with non-internally displaced families, while 53,822 reside separately. Notably, 17% of the 78,611 individuals in host settings are living in overcrowded conditions according to the perception of IOM DTM key informants.

In Sour, there are presently five collective shelters accommodating 919 IDPs; in Hasbaya, there are seven collective shelters hosting 188 IDPs; in El Nabatieh there are four collective shelter hosting 139 IDPs; in Rachaya, there is one collective shelter hosting 6 IDPs and in Saïda, there is one collective shelter hosting 246 IDPs.



Displacement demographics

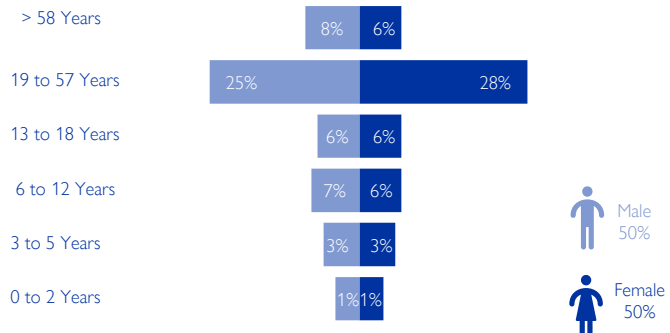


Chart 4: Displacement demographics

33% of IDPs are children (< 18 years), while 34% are female adults and 33% are male adults.

Note: These figures represent sample data of 2 households per location provided by key informants and do not reflect the entire IDP population in each area.

Methodology

The objective of the Mobility Snapshot is to support the humanitarian community in preparedness and response planning. Multi-layered data is routinely captured through Rounds using a suite of methodological tools designed to track and monitor displacement. These tools are in line with the [DTM Global Methodological Framework](#).

Data is collected nationwide through a combination of face-to-face and remote data collection methods, utilizing a network of over 44 enumerators and 3,600 key informants. These key informants consist of government officials, mukhtars, community representatives, and neighborhood focal points.