

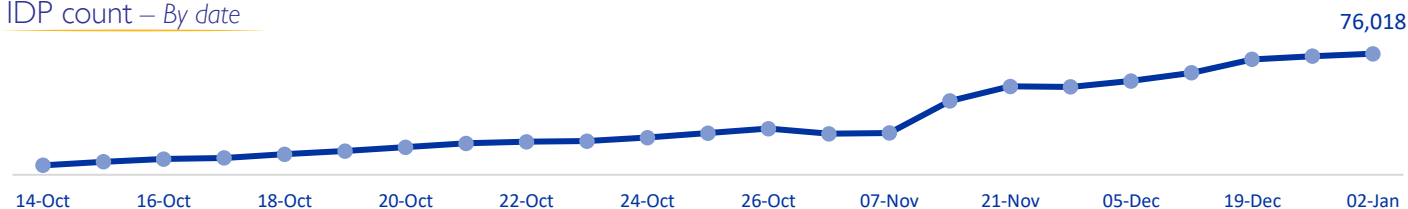
MOBILITY SNAPSHOT – Round 18

Report Production Date: 4 January 2024 | Data collected up till 4 pm on 2 January 2024

Overview

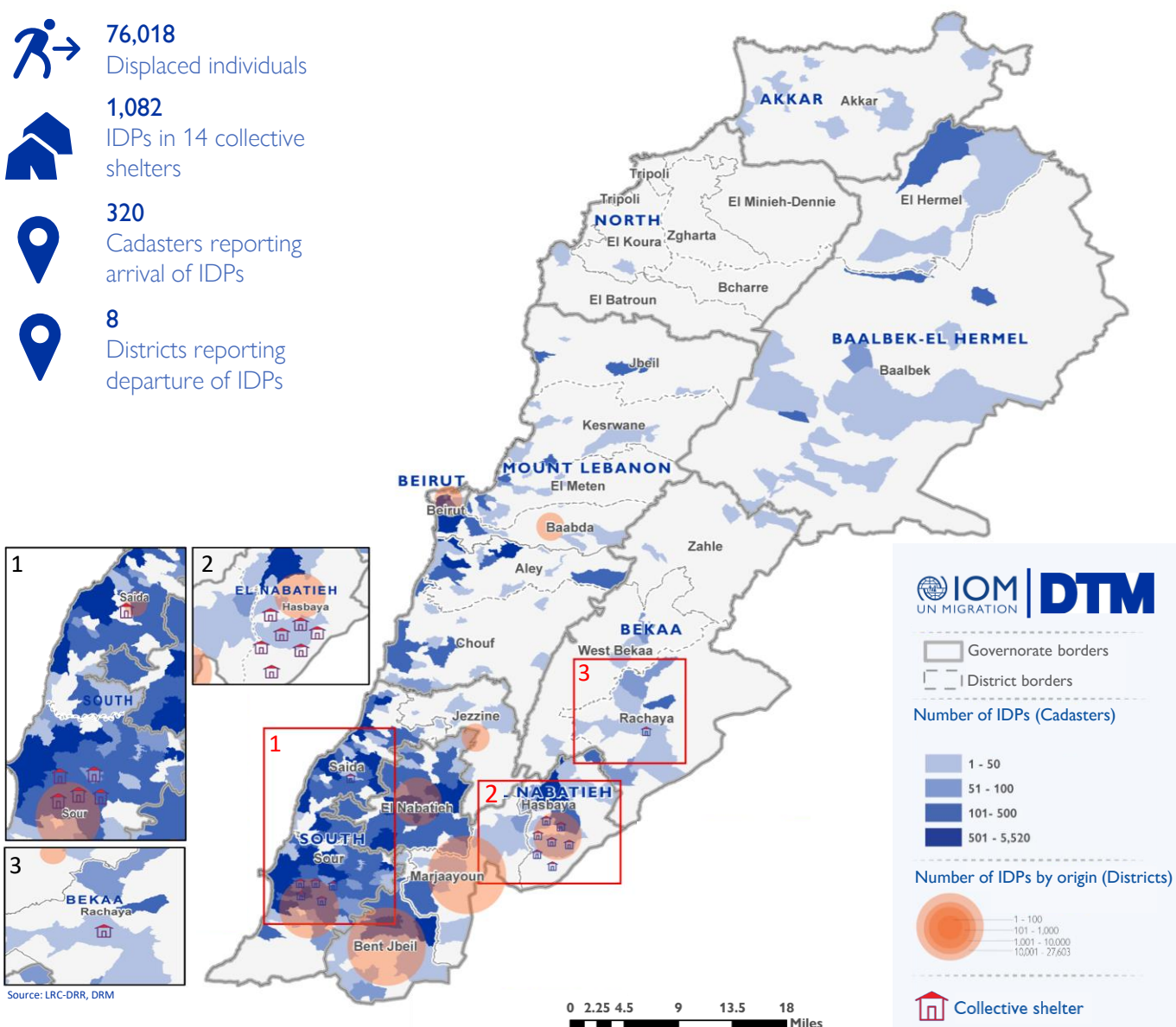
Armed confrontations have been occurring at the Southern Lebanese border since the 8 October 2023. As a consequence, several thousand families from South Lebanon have fled their homes. The International Organization for Migration (IOM) conducts daily monitoring of population movements, with the objective of informing preparedness and response planning. Population numbers for collective shelters and El Nabatieh governorate have been directly provided from the data collected at the level of the emergency operations rooms, supported by the Lebanese Red Cross, (LRC) and the Disaster Risk Management (DRM) Unit.

IDP count – By date



IDPs by cadaster of arrival and district of origin

- 76,018**
Displaced individuals
- 1,082**
IDPs in 14 collective shelters
- 320**
Cadasters reporting arrival of IDPs
- 8**
Districts reporting departure of IDPs

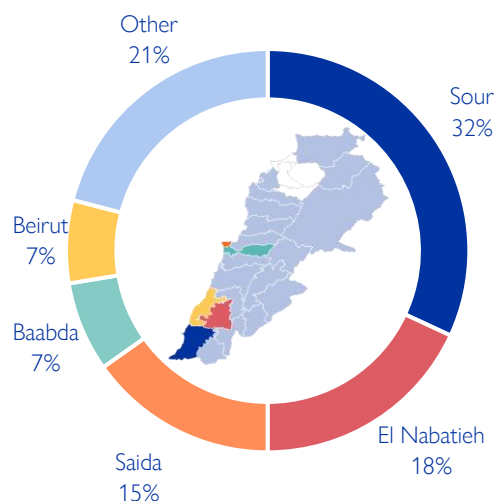


Source: LRC-DRR, DRM

Displacement within Lebanon – By district of arrival

Governorate	District	# of Cadasters	# of Locations	IDPs
South	Sour	51	64	24,317
El Nabatieh	El Nabatieh	40	40	13,791
South	Saida	37	51	11,566
Mount Lebanon	Baabda	12	22	5,495
Beirut	Beirut	5	10	5,070
Mount Lebanon	Aley	16	28	4,129
El Nabatieh	Bent Jbeil	28	28	3,346
Mount Lebanon	Chouf	18	33	2,024
El Nabatieh	Marjaayoun	14	14	1,366
El Nabatieh	Hasbaya	11	11	1,167
Mount Lebanon	El Meten	13	16	932
Baalbek-El Hermel	Baalbek	19	26	719
Mount Lebanon	Jbeil	5	7	697
Bekaa	Rachaya	8	9	367
Mount Lebanon	Kesrwane	8	8	301
Baalbek-El Hermel	El Hermel	4	7	215
Akkar	Akkar	15	17	175
Bekaa	West Bekaa	3	3	143
Bekaa	Zahle	5	5	105
South	Jezzine	6	6	87
North	El Batroun	1	1	4
North	El Koura	1	1	2
Total		320	407	76,018

Chart 1: IDPs distribution by district of arrival

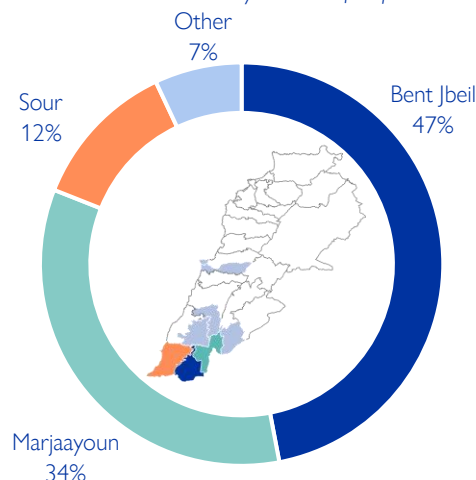


As of 2 January 2024, Lebanon has recorded 76,018 internally displaced persons (IDPs), showing a 2% increase since 26 December 2023. IDPs have sought safety in 407 locations (villages or neighbourhoods) across 320 cadasters throughout Lebanon. Displacement has been observed in 22 out of the 26 districts across all eight governorates. Most of the IDPs (79%) are in five districts out of the total 22 districts hosting IDPs—specifically, Sour, El Nabatieh, Saida, Beirut, and Baabda.

Displacement within Lebanon – By district of departure

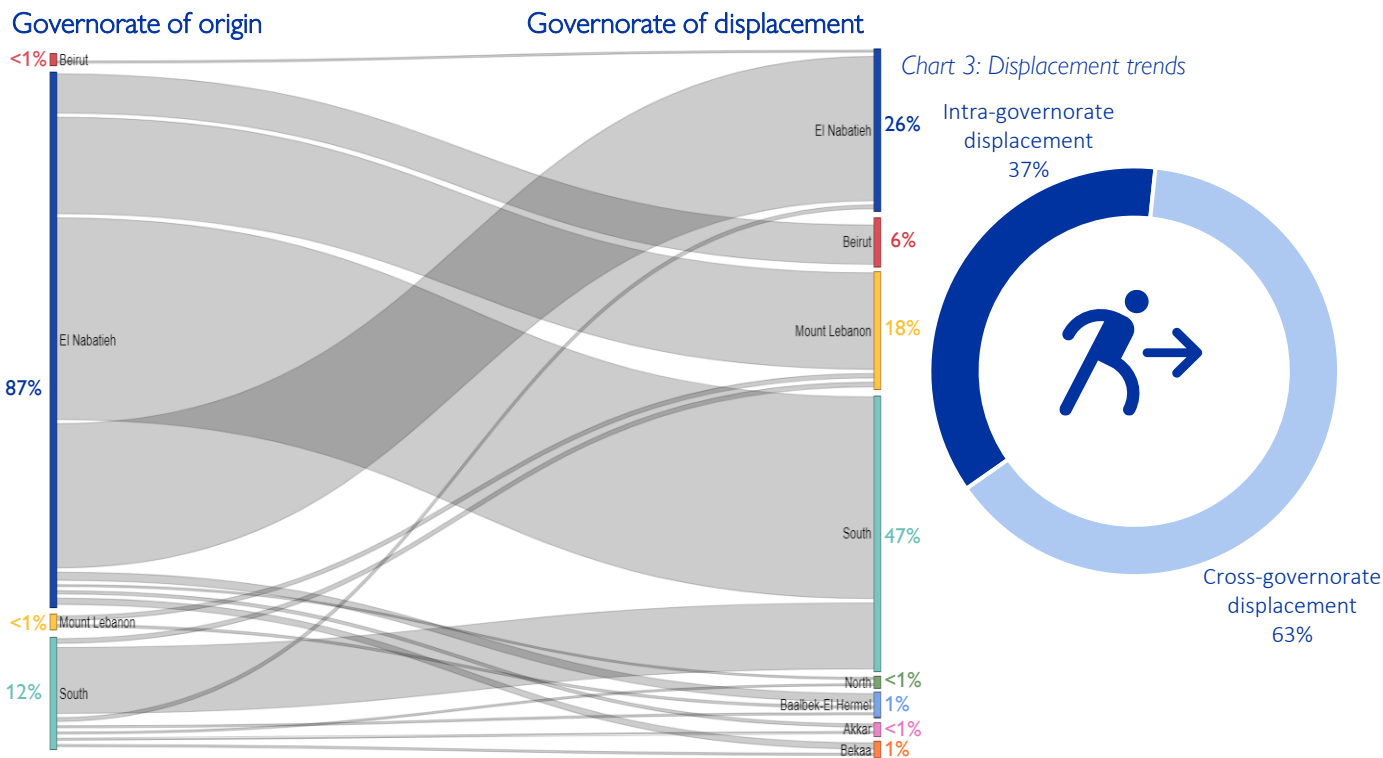
Governorate	District	IDPs
El Nabatieh	Bent Jbeil	36,063
El Nabatieh	Marjaayoun	25,952
South	Sour	9,405
El Nabatieh	Hasbaya	2,142
El Nabatieh	El Nabatieh	2,039
Mount Lebanon	Baabda	405
Beirut	Beirut	6
South	Jezzine	6
Total		76,018

Chart 2: IDPs distribution by district of departure



The majority of IDPs (94%) originate from three districts. These three districts span along the Southern border of Lebanon. Specifically, 47% are from Bent Jbeil, 34% are from Marjaayoun, and 12% are from Sour. The remaining 7% originate from five different districts, Hasbaya, El Nabatieh, Baabda, Beirut, and Jezzine.

Movement of IDPs from governorate of origin to governorate of displacement



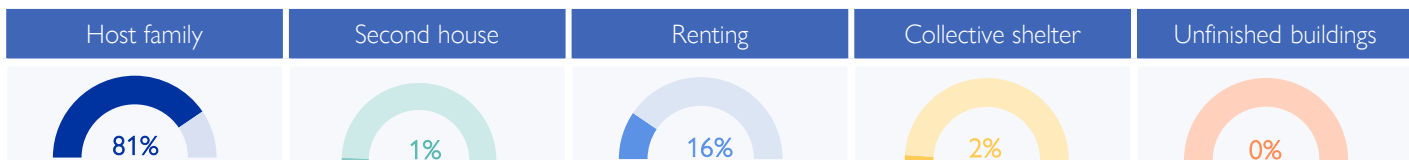
Overall, 63% of the displacement has occurred outside the boundaries of the IDPs' governorate of origin. While 86% (66,196) of the IDPs originate from El Nabatieh, of this population 71% fled to locations outside the boundaries of El Nabatieh governorate. However, in the South governorate, where 12% (9,411) of IDPs originated, 93% of these IDPs chose to move internally within the governorate.

Arrivals in the last week – (28 December 2023 to 2 January 2024)

Governorate	District	# of Cadasters	# of Locations	IDPs
South	Sour	31	33	1,038
South	Saida	21	23	858
Mount Lebanon	Baabda	6	9	815
Mount Lebanon	Aley	3	5	195
Beirut	Beirut	2	2	55
Mount Lebanon	Jbeil	2	4	50
Mount Lebanon	Kesrwane	2	2	35
Mount Lebanon	Chouf	3	3	35
Baalbek-El Hermel	Baalbek	2	2	15
Bekaa	Rachaya	1	1	10
Baalbek-El Hermel	El Hermel	1	1	5
Bekaa	Zahle	1	1	5
South	Jezzine	1	1	2
Total		76	87	3,118

In the past week, 3,118 new displacements have been recorded in 78 cadasters across 13 districts. These individuals might be experiencing displacement for the first time or undergoing secondary movement. These individuals have arrived from Bent Jbeil, El Nabatieh, Marjaayoun, Hasbaya, Baabda, and Sour districts.

IDPs distribution by shelter type – By Governorate



Around 81% of IDPs are currently living with host families, while 16% have opted for rental housing. Another 1% have relocated to their secondary residences. Around 2% are housed in 14 collective shelters.

In Sour, there are presently five collective shelters accommodating 753 IDPs; in Hasbaya, there are seven collective shelters hosting 139 IDPs, in Rachaya, there is one collective shelter hosting 38 IDPs and in Saïda, there is one collective shelter hosting 152 IDPs.



* The shelter information for El Nabatieh is derived from Round 12 data. Consequently, there is a 2% decrease in IDPs residing in Collective shelters, accompanied by a corresponding 2% increase in IDPs hosted by Families.

Displacement demographics

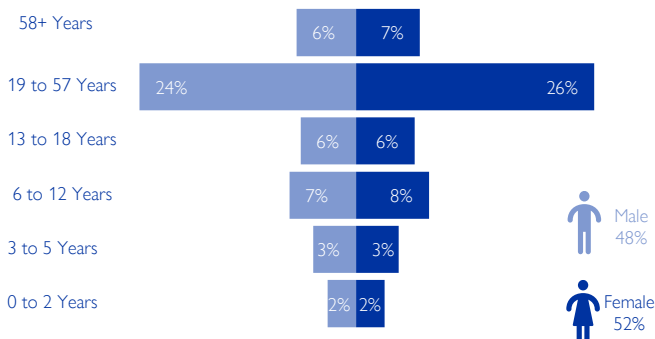


Chart 4: Displacement demographics – Based on Round 14 Data

Note: These figures represent sample data of 2 households per location provided by key informants and do not reflect the entire IDP population in each area.

Methodology

The objective of the Mobility Snapshot is to support the humanitarian community in preparedness and response planning. Multi-layered data is routinely captured through Rounds using a suite of methodological tools designed to track and monitor displacement. These tools are in line with the [DTM Global Methodological Framework](#).

Data is collected nationwide through a combination of face-to-face and remote data collection methods, utilizing a network of over 44 enumerators and 3,600 key informants. These key informants consist of government officials, mukhtars, community representatives, and neighborhood focal points.

The following citation is required when using any data and information included in this information product: "International Organization for Migration (IOM), January 2024. DTM Mobility Snapshot, Round 18. IOM, Lebanon". For more information on terms and conditions of DTM reports and information products, please refer to <https://dtm.iom.int/terms-and-conditions>.