

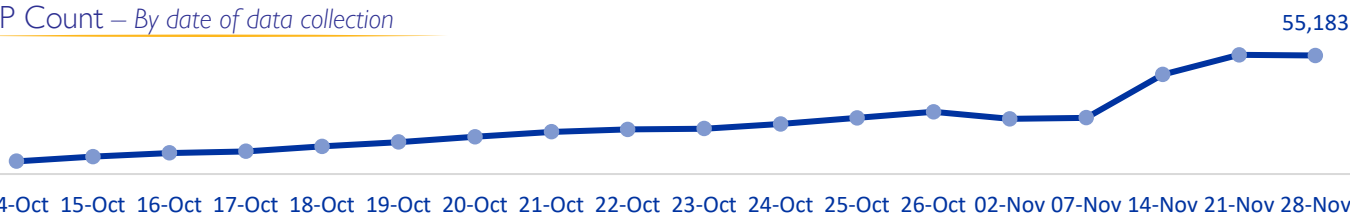
## MOBILITY SNAPSHOT – Round 13

Report Production Date: 30 November 2023 | Data collected up till 1600h 28 November 2023

### Overview

Armed confrontations have been occurring at the Southern Lebanese border since the 8th of October. As a consequence, several thousand families from South Lebanon have fled their homes. The International Organization for Migration (IOM) conducts daily monitoring of population movements, with the objective of informing preparedness and response planning. Population numbers for collective shelters and Nabatieh governorate have been directly provided from the data collected at the level of the emergency operations rooms, supported by the Lebanese Red Cross, (LRC) and the Disaster Risk Management (DRM) Unit.

### IDP Count – By date of data collection



### IDPs by Cadaster of Arrival and District of Origin



**55,183**  
Displaced individuals



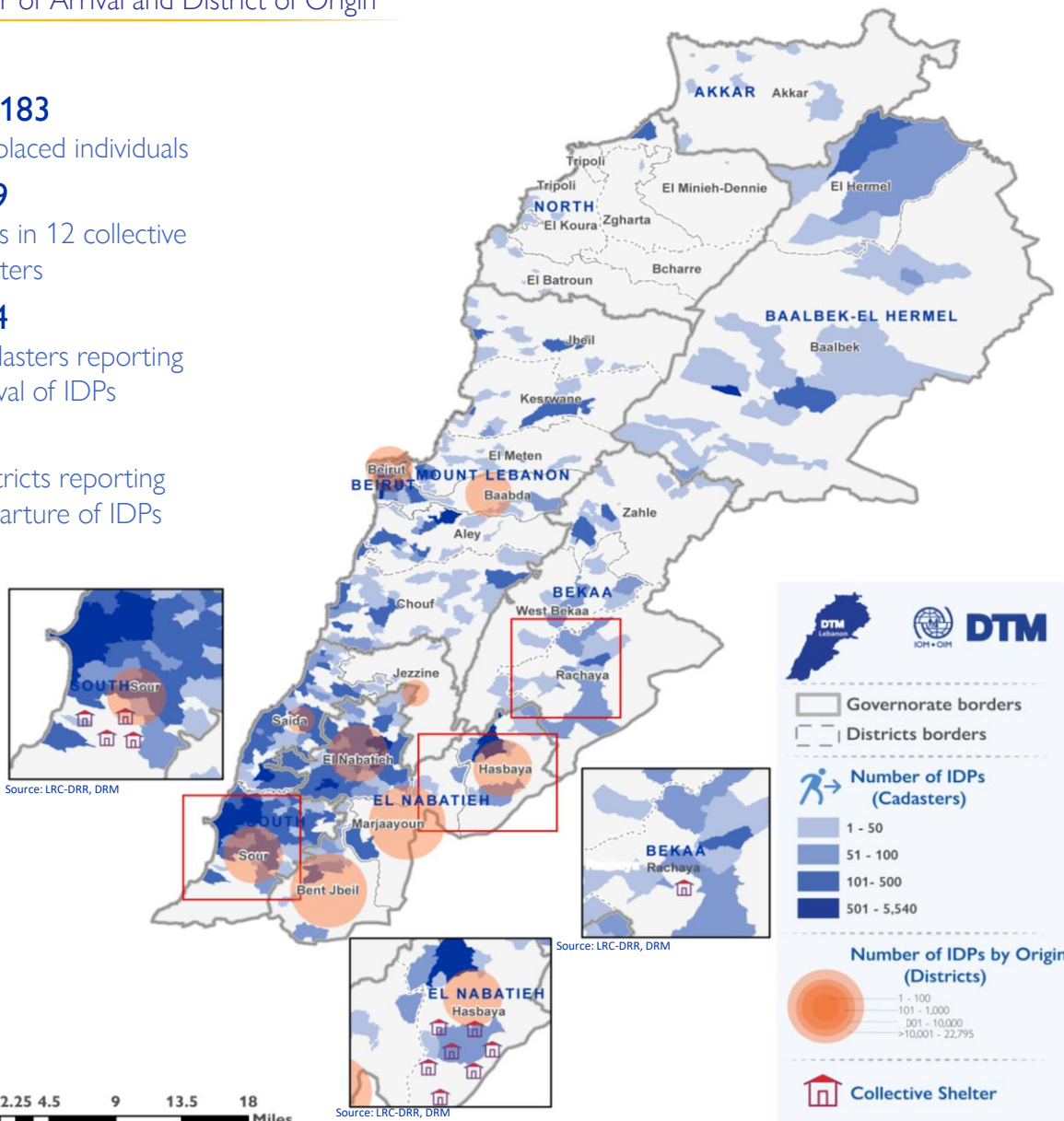
**979**  
IDPs in 12 collective shelters



**324**  
Cadastrers reporting arrival of IDPs



**9**  
Districts reporting departure of IDPs

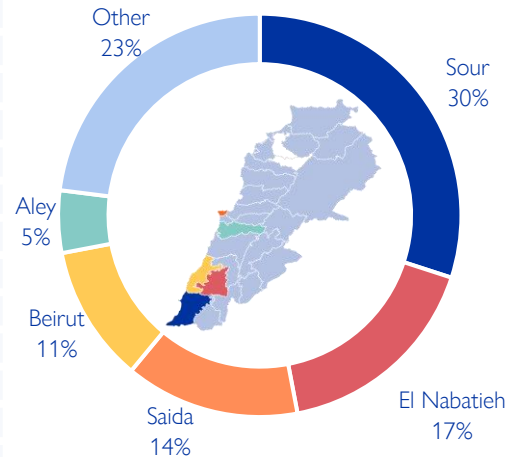


This map is for illustration purposes only. Names and boundaries on this map do not imply official endorsement or acceptance by IOM.

## Displacement within Lebanon – By District of Arrival

Governorate	District	# of Cadasters	# of Locations	IDPs
South	Sour	36	41	16,516
El Nabatieh	El Nabatieh	39	41	9,213
South	Saida	41	50	7,526
Beirut	Beirut	8	14	6,120
Mount Lebanon	Aley	18	24	2,861
Mount Lebanon	Baabda	12	20	1,940
Mount Lebanon	Chouf	21	27	1,694
El Nabatieh	Bent Jbeil	18	18	1,666
Baalbek-El Hermel	Baalbek	15	22	1,306
Mount Lebanon	El Meten	20	22	1,020
El Nabatieh	Hasbaya	8	10	920
Mount Lebanon	Kesrwane	7	8	838
Bekaa	Zahle	15	18	800
El Nabatieh	Marjaayoun	15	15	680
Mount Lebanon	Jbeil	6	8	630
Bekaa	Rachaya	10	11	491
Bekaa	West Bekaa	8	8	315
Baalbek-El Hermel	El Hermel	5	9	260
North	El Minieh-Dennie	2	2	210
Akkar	Akkar	9	9	66
North	El Batroun	7	7	65
North	El Koura	2	2	25
South	Jezzine	1	1	15
North	Tripoli	1	1	6
<b>Total</b>		<b>324</b>	<b>388</b>	<b>55,183</b>

Chart 1: IDPs Distribution by District of Arrival

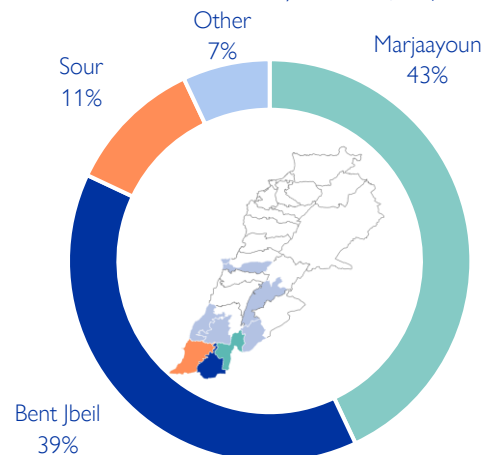


As of the 28th of November 2023, Lebanon has recorded 55,183 internally displaced persons (IDPs), showing a 1% decrease since 21st of November. IDPs have sought safety in 388 locations (villages or neighbourhoods) across 324 cadasters throughout Lebanon. Displacement has been observed in 24 out of the 26 districts across all eight governorates. Most of the IDPs (77%) are in five districts out of the total 24 districts hosting IDPs—specifically, Sour, El Nabatieh, Aley, Beirut, and Saida.

## Displacement within Lebanon – By District of Departure

Governorate	District	IDPs
El Nabatieh	Marjaayoun	23,576
El Nabatieh	Bent Jbeil	21,560
South	Sour	5,810
El Nabatieh	Hasbaya	1,915
El Nabatieh	El Nabatieh	1,780
Mount Lebanon	Baabda	410
South	Saida	73
Beirut	Beirut	49
Bekaa	West Bekaa	10
<b>Total</b>		<b>55,183</b>

Chart 2: IDPs Distribution by District of Departure



93% of the IDPs originate from three districts, 43% are from Marjaayoun, 39% are from Bent Jbeil, and 11% are from Sour. The remaining 7% originate from six different districts.

# Movement of IDPs from Governorate of Origin to Governorate of Displacement

## Governorate of Origin

## Governorate of Displacement

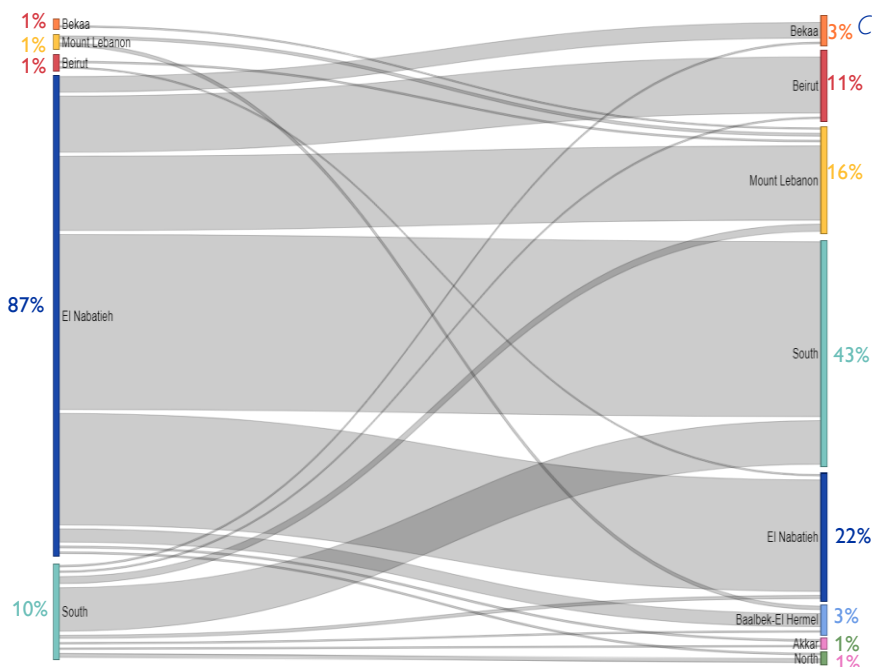
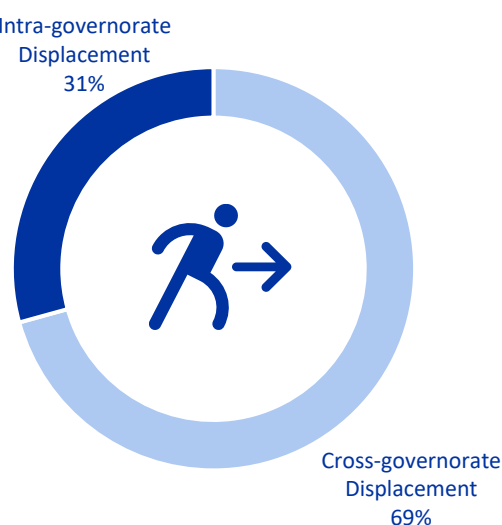


Chart 3: IDPs Distribution by Displacement Pattern



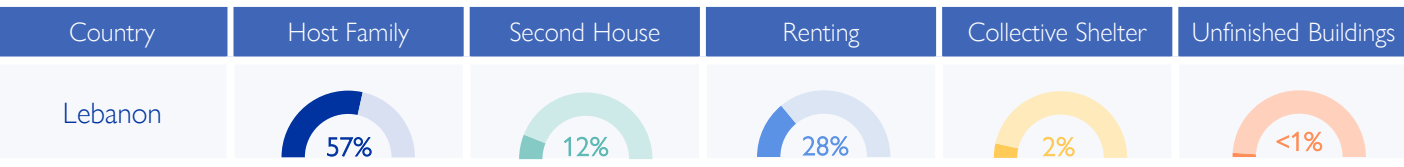
Overall, 69% of the displacement has occurred beyond the boundaries of the IDPs' governorate of origin. While most of the IDPs originate from El Nabatieh, however, only 25% sought safety in another location within the governorate. In the South governorate, where 10% of IDPs originated, 80% of these IDPs chose to move internally within the governorate.

## Arrivals in the Last Week – (21 to 28 November)

Governorate	District	# of Cadasters	# of Locations	IDPs
South	Sour	11	11	750
South	Saida	6	6	432
Mount Lebanon	Chouf	5	5	185
Mount Lebanon	Jbeil	1	1	150
Bekaa	West Bekaa	2	2	80
Mount Lebanon	Aley	3	3	59
Baalbek-EI Hermel	Baalbek	3	3	22
Bekaa	Zahle	2	2	20
Mount Lebanon	Kesrwane	1	1	20
Baalbek-EI Hermel	El Hermel	2	2	15
Mount Lebanon	Baabda	2	2	10
Bekaa	Rachaya	1	1	10
Beirut	Beirut	1	1	10
Akkar	Akkar	2	2	6
Mount Lebanon	El Meten	1	1	5
<b>Total</b>		<b>43</b>	<b>43</b>	<b>1,774</b>

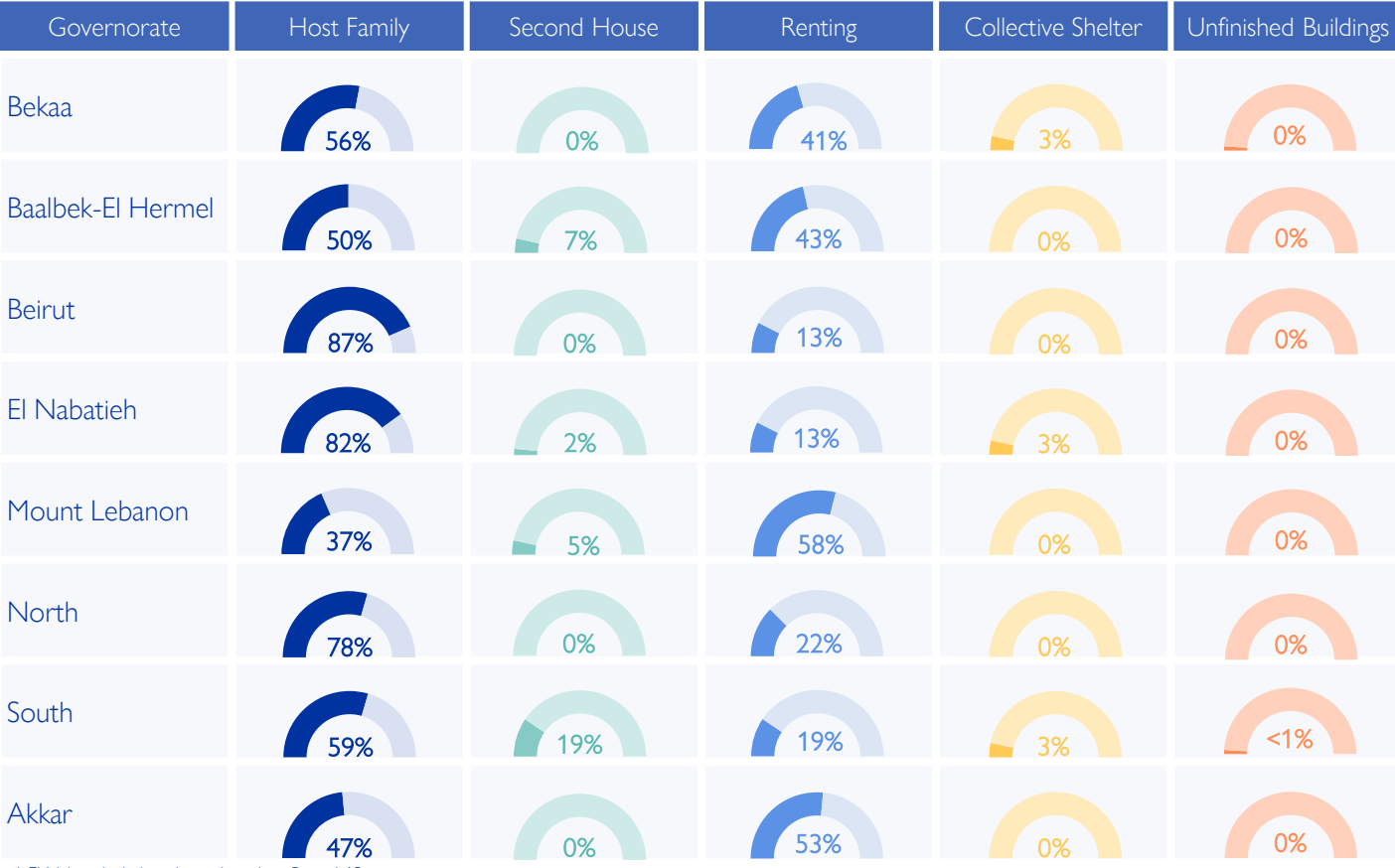
In the past week, 1,774 new IDPs have been recorded across in 43 cadasters across 15 districts. These individuals might be experiencing displacement for the first time or undergoing secondary movement.

# IDPs Distribution by Shelter Type – By Governorate



Around 57% of IDPs are currently living with host families, while 28% have opted for rental housing. Another 12% have relocated to their secondary residences. A smaller fraction, around 2%, are housed in Collective Shelters, with a further <1% having been reported to be staying in incomplete or unfinished buildings.

In Sour, there are presently four collective shelters accommodating 733 IDPs; in Hasbaya, there are seven collective shelters hosting 200 IDPs and in Kfar Denis, there is one collective shelter hosting 46 IDPs. Additionally, there are reports of 50 IDPs residing in unfinished buildings in South governorate.



\* El Nabatieh shelter data is based on Round 12

## Displacement Demographics

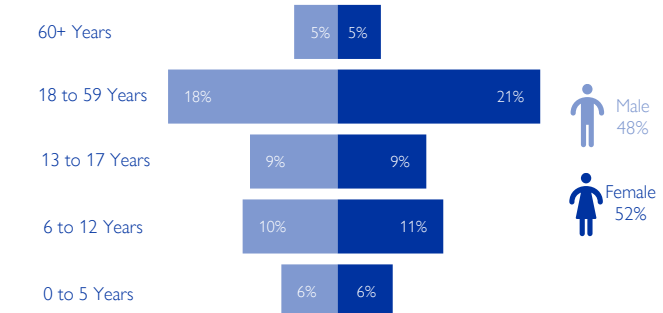


Chart 4: Displacement Demographics

Based on Round 9 data: Based on Round 9 data, 51% of IDPs are children (< 18 years), while 26% are female adults and 23% are male adults.

## Methodology

The objective of the Mobility Snapshot is to support the humanitarian community in preparedness and response planning. Multi-layered data is routinely captured through Rounds using a suite of methodological tools designed to track and monitor displacement. These tools are in line with the [DTM Global Methodological Framework](#).

Data is collected nationwide through a combination of face-to-face and remote data collection methods, utilizing a network of over 44 enumerators and 3,600 key informants. These key informants consist of government officials, mukhtars, community representatives, and neighborhood focal points.

The following citation is required when using any data and information included in this information product: "International Organization for Migration (IOM), November 2023. DTM Mobility Snapshot, Round 13. IOM, Lebanon". For more information on terms and conditions of DTM reports and information products, please refer to <https://dtm.iom.int/terms-and-conditions>.