

MOBILITY SNAPSHOT – Round 11

Report Production Date: 16 November 2023 | Data collected up till 1600h 14 November 2023

Overview

Armed confrontations have been occurring at the Southern Lebanese border since the 8th of October. As a consequence, several thousand families from South Lebanon have fled their homes. The International Organization for Migration (IOM) conducts daily monitoring of population movements, with the objective of informing preparedness and response planning. Population numbers for collective shelters have been directly provided from the data collected at the level of the emergency operations rooms, supported by the Lebanese Red Cross (LRC) and the Disaster Risk Management (DRM) Unit.

IDP Count – By date of data collection



IDPs by Cadaster of Arrival and District of Origin



46,325
Displaced individuals



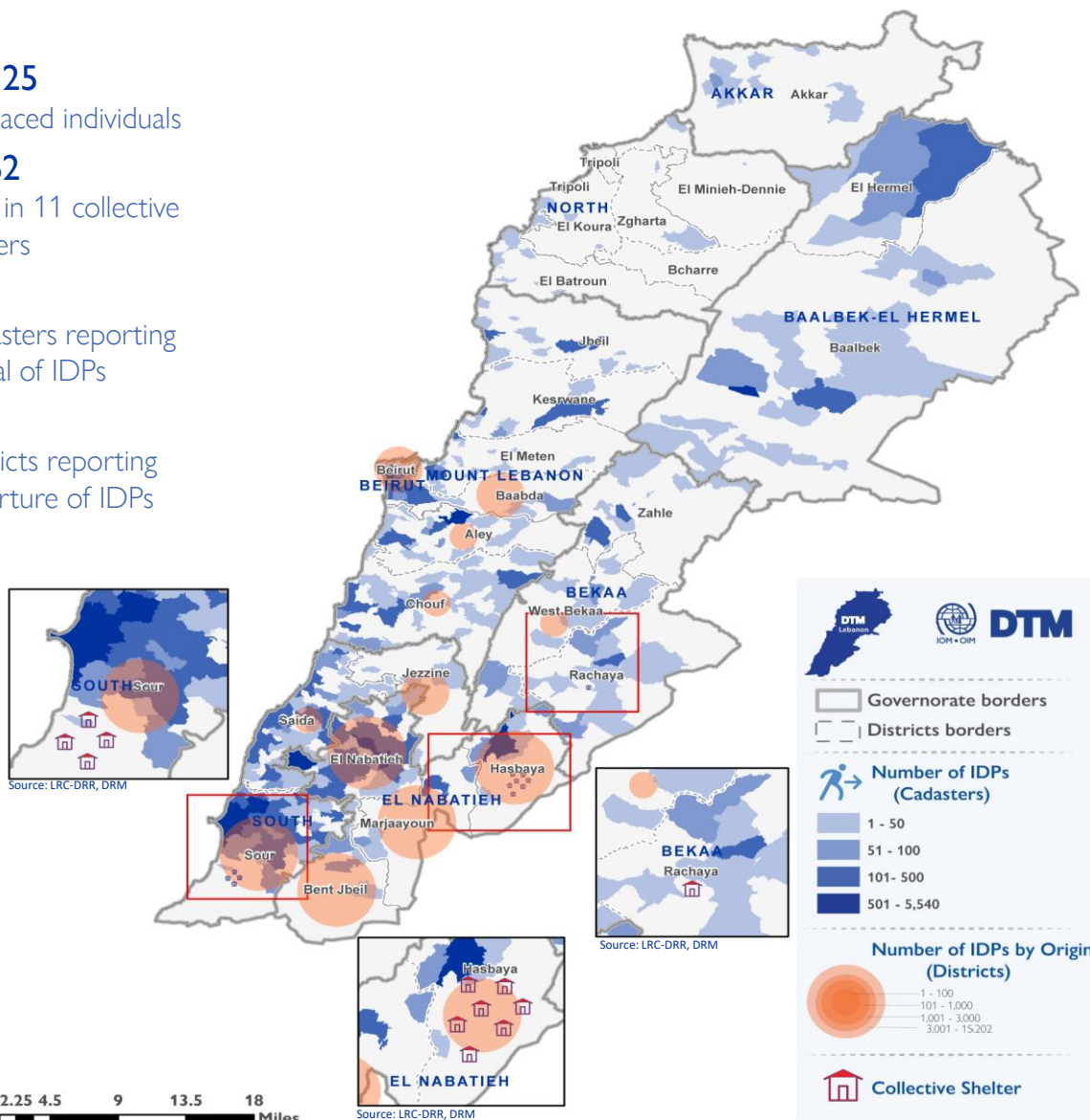
1,062
IDPs in 11 collective shelters



362
Cadastrers reporting arrival of IDPs



12
Districts reporting departure of IDPs

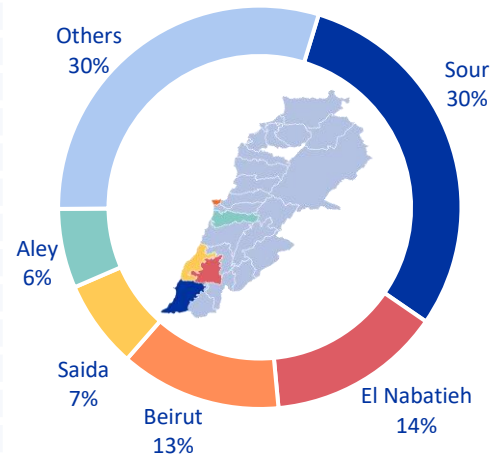


This map is for illustration purposes only. Names and boundaries on this map do not imply official endorsement or acceptance by IOM.

Displacement within Lebanon – By District of Arrival

Governorate	District	# of Cadasters	# of Locations	IDPs
South	Sour	40	45	13,904
El Nabatieh	El Nabatieh	37	37	6,487
Beirut	Beirut	8	14	6,020
South	Saida	41	55	3,290
Mount Lebanon	Aley	22	27	2,961
Mount Lebanon	Chouf	32	37	2,238
Baalbek-El Hermel	Baalbek	25	35	1,790
Mount Lebanon	Baabda	15	25	1,435
El Nabatieh	Hasbaya	7	9	1,433
Bekaa	Zahle	16	20	930
Mount Lebanon	Jbeil	14	17	892
Mount Lebanon	El Meten	17	20	890
Mount Lebanon	Keswane	8	11	830
Bekaa	Rachaya	9	11	659
El Nabatieh	Bent Jbeil	10	11	640
El Nabatieh	Marjaayoun	5	5	510
Bekaa	West Bekaa	12	12	435
Baalbek-El Hermel	El Hermel	5	10	320
Akkar	Akkar	14	14	247
South	Jezzine	9	10	190
North	El Batroun	7	7	62
North	El Koura	4	4	61
North	Zgharta	2	2	60
North	El Minieh-Dennie	2	2	35
North	Tripoli	1	1	6
Total		362	441	46,325

Chart 1: IDPs Distribution by District of Arrival

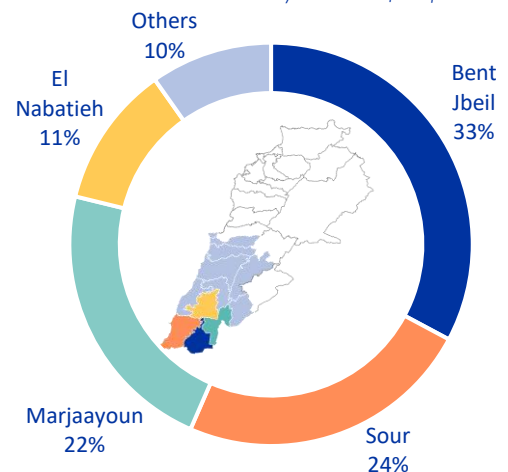


As of 14th of November 2023, Lebanon has recorded 46,325 internally displaced persons (IDPs), showing a 76% increase since 7th of November. IDPs have sought safety in 441 locations (villages or neighbourhoods) across 362 cadasters throughout Lebanon. Displacement has been observed in 25 out of the 26 districts across all eight governorates. Most of the IDPs (70%) are in five districts out of the total 25 districts hosting IDPs—specifically, Sour, El Nabatieh, Aley, Beirut, and Saida.

Displacement within Lebanon – By District of Departure

Governorate	District	IDPs
El Nabatieh	Bent Jbeil	15,202
South	Sour	10,992
El Nabatieh	Marjaayoun	10,321
El Nabatieh	El Nabatieh	5,278
El Nabatieh	Hasbaya	3,148
Mount Lebanon	Baabda	612
Beirut	Beirut	407
South	Jezzine	135
South	Saida	95
Mount Lebanon	Chouf	75
Bekaa	West Bekaa	30
Mount Lebanon	Aley	30
Total		46,325

Chart 2: IDPs Distribution by District of Departure



90% of the IDPs originate from four districts, 33% are from Bent Jbeil, 24% are from Sour, 22% are from Marjaayoun, and 11% are from El Nabatieh district. The remaining 10% originate from eight different districts.

Movement of IDPs from Governorate of Origin to Governorate of Displacement

Governorate of Origin

Governorate of Displacement

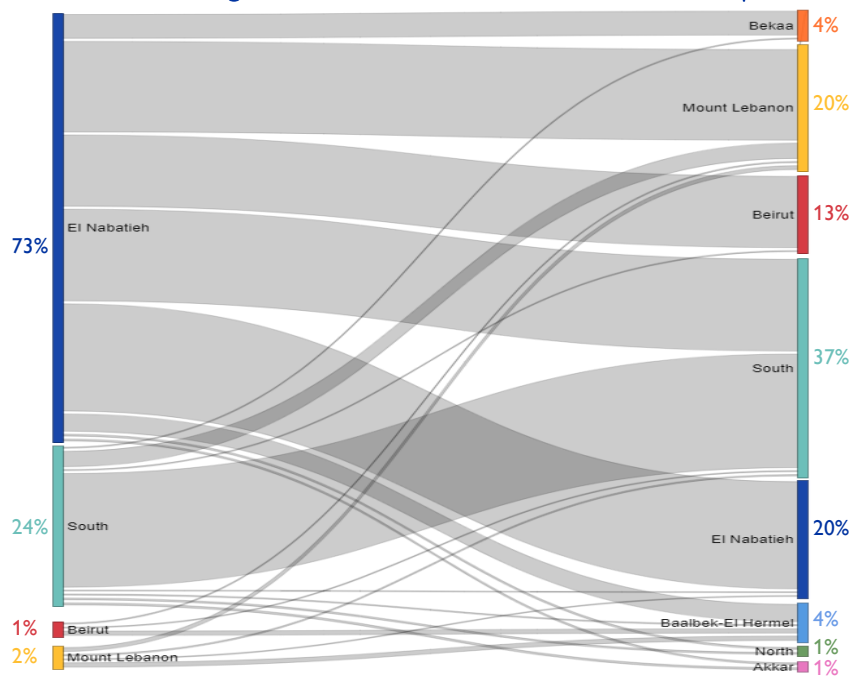
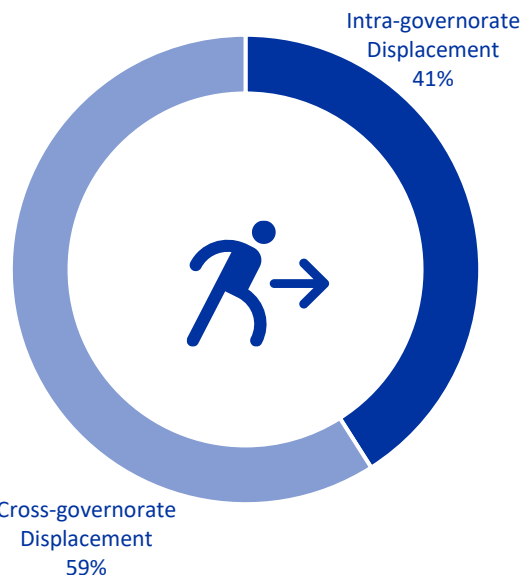


Chart 3: IDPs Distribution by Displacement Pattern



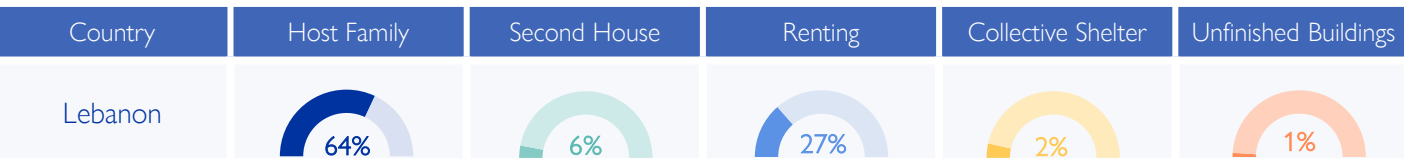
Overall, 59% of the displacement has occurred beyond the boundaries of the IDPs' governorate of origin. While most of the IDPs originate from El Nabatieh, only 26% sought safety in another location within the governorate. In the South governorate, where 24% of IDPs originated, 85% of these IDPs chose to move internally within the governorate.

Arrivals in the Last Week – (8 to 14 November)

Governorate	District	# of Cadasters	# of Locations	IDPs
Akkar	Akkar	2	2	10
Baalbek-EI Hermel	Baalbek	8	11	66
Baalbek-EI Hermel	EI Hermel	1	2	6
Beirut	Beirut	1	1	5
Bekaa	Rachaya	3	3	102
Bekaa	West Bekaa	4	4	25
Bekaa	Zahle	2	2	15
El Nabatieh	Bent Jbeil	3	4	131
El Nabatieh	El Nabatieh	20	20	675
El Nabatieh	Marjaayoun	2	2	105
Mount Lebanon	Aley	9	10	180
Mount Lebanon	Baabda	7	11	154
Mount Lebanon	Chouf	10	10	296
Mount Lebanon	El Meten	1	1	5
Mount Lebanon	Jbeil	4	5	185
Mount Lebanon	Kesrwane	1	1	5
North	El Batroun	1	1	10
South	Saida	16	19	315
South	Sour	14	14	368
Total		109	123	2,658

In the past week, 2,658 new IDPs have been recorded across 123 locations in 109 cadasters across 19 districts. These individuals might be experiencing displacement for the first time or undergoing secondary movement. While these factors have contributed to the increase in the overall IDP figure since Round 10, the primary factor has been the expanded geographic coverage in data collection—from 691 locations (villages and neighborhoods) in Round 10 to 2,112 locations in Round 11.

IDPs Distribution by Shelter Type – By Governorate



Around 64% of IDPs are currently living with host families, while 27% have opted for rental housing. Another 6% have relocated to their secondary residences. A smaller fraction, around 2%, are housed in Collective Shelters, with a further 1% having been reported to be staying in incomplete or unfinished buildings.

In Sour, there are presently four collective shelters accommodating 740 IDPs; in Hasbaya, there are seven collective shelters hosting 276 IDPs and in Kfar Denis, there is one collective shelter hosting 46 IDPs. Additionally, there are reports of 20 IDPs residing in unfinished buildings in Bekaa.



Displacement Demographics

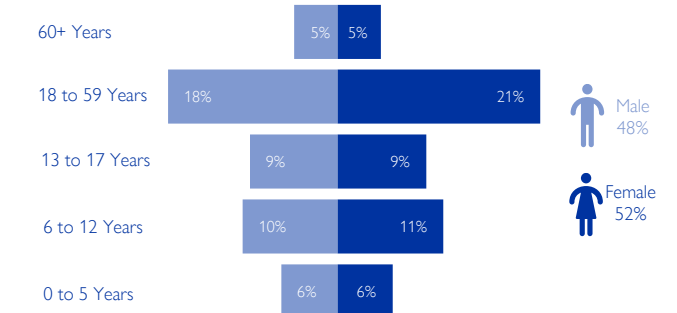


Chart 4: Displacement Demographics

Based on Round 9 data: Based on Round 9 data, 51% of IDPs are children (< 18 years), while 26% are female adults and 23% are male adults.

Methodology

The objective of the Mobility Snapshot is to support the humanitarian community in preparedness and response planning. Multi-layered data is routinely captured through Rounds using a suite of methodological tools designed to track and monitor displacement. These tools are in line with the [DTM Global Methodological Framework](#).

Data is collected nationwide through a combination of face-to-face and remote data collection methods, utilizing a network of over 44 enumerators and 3,600 key informants. These key informants consist of government officials, mukhtars, community representatives, and neighborhood focal points.

The following citation is required when using any data and information included in this information product: "International Organization for Migration (IOM), October 2023. DTM Mobility Snapshot, Round 11. IOM, Lebanon". For more information on terms and conditions of DTM reports and information products, please refer to <https://dtm.iom.int/terms-and-conditions>.