

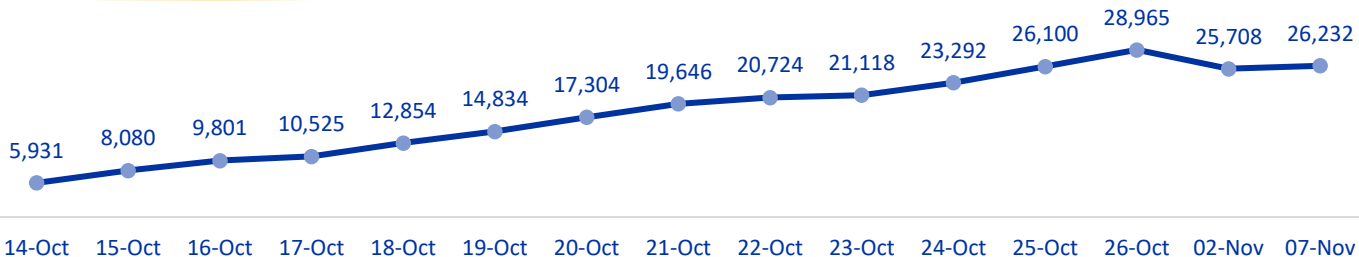
MOBILITY SNAPSHOT – Round 10

Report Production Date: 09 November 2023 | Data collected up till 1600h 07 November 2023

Overview

Armed confrontations have been occurring at the Southern Lebanese border since the 8th of October. As a consequence, several thousand families from South Lebanon have fled their homes. The International Organization for Migration (IOM), Lebanese Red Cross Disaster Risk Management (LRC DRR) Unit, and the Disaster Risk Management (DRM) Unit, conducts daily monitoring of population movements, with the objective of informing preparedness and response planning.

IDP Count – By date of data collection



IDPs by Cadaster of Arrival and District of Origin



26,232

Displaced individuals



986

IDPs in 11 collective shelters



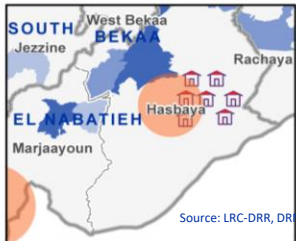
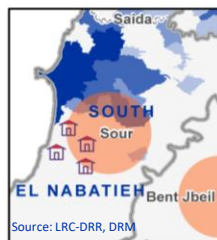
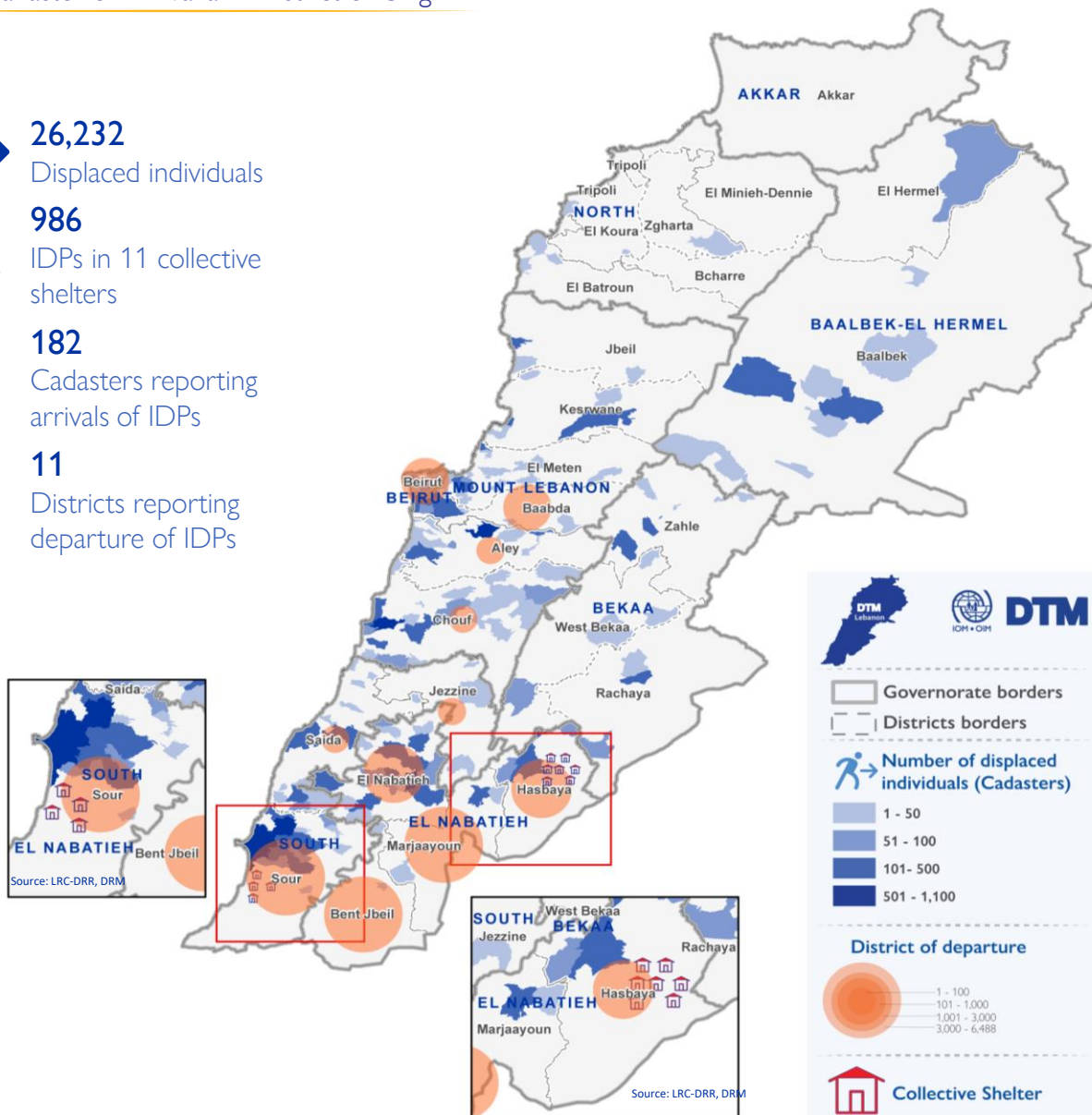
182

Cadasters reporting arrivals of IDPs



11

Districts reporting departure of IDPs



DTM Lebanon
ICR + ODI

- Governorate borders
- Districts borders
- Number of displaced individuals (Cadasters)
 - 1 - 50
 - 51 - 100
 - 101 - 500
 - 501 - 1,100
- District of departure
 - 1 - 100
 - 101 - 1,000
 - 1,001 - 3,000
 - 3,000 - 6,488
- Collective Shelter

This map is for illustration purposes only. Names and boundaries on this map do not imply official endorsement or acceptance by IOM.

Displacement within Lebanon – By District of Arrival

Governorate	District	# of Cadasters	# of Locations	IDPs
South	Sour	18	25	10,462
El Nabatieh	El Nabatieh	20	21	3,317
Mount Lebanon	Aley	12	19	2,695
Mount Lebanon	Chouf	26	35	2,245
South	Saida	17	24	1,722
Mount Lebanon	Baabda	10	23	1,152
Mount Lebanon	El Meten	21	26	906
Mount Lebanon	Kesrwane	6	10	685
Baalbek El-Hermel	Baalbek	9	16	501
Bekaa	Zahle	7	9	490
Bekaa	Rachaya	3	3	452
El Nabatieh	Hasbaya	3	3	350
Beirut	Beirut	7	11	320
El Nabatieh	Marjaayoun	3	4	245
Mount Lebanon	Jbeil	3	4	195
Bekaa	West Bekaa	5	5	190
Baalbek El-Hermel	El Hermel	1	6	95
South	Bent Jbeil	2	2	60
North	Zgharta	1	1	45
North	El Koura	2	2	40
North	El Batroun	3	3	35
South	Jezzine	3	4	30
Total		182	256	26,232

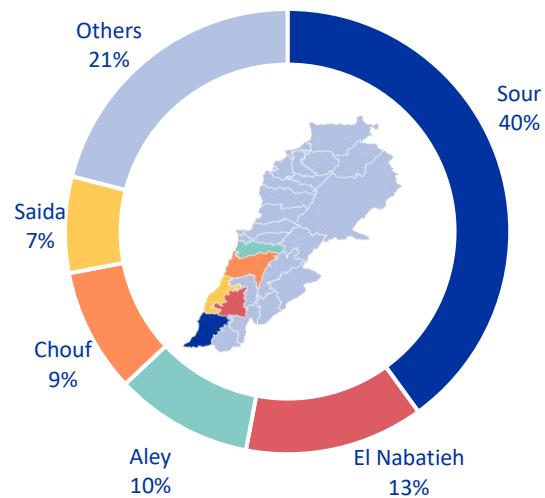


Chart 1: IDPs Distribution by Governorate of Arrival

As of 7th of November 2023, Lebanon has recorded 26,232 internally displaced persons (IDPs), showing a 2% increase since 2nd of November. IDPs have sought safety in 256 locations (villages or neighbourhoods) across 182 cadasters throughout Lebanon. Displacement has been observed in 22 districts in seven of the eight governorates. Most of the IDPs (78%) are in five districts out of the total 22 districts hosting IDPs—specifically, Sour, El Nabatieh, Aley, Chouf, and Saida.

Displacement within Lebanon – By District of Departure

Governorate of Origin	District of Origin	IDPs
South	Sour	9,725
El Nabatieh	Marjaayoun	6,488
El Nabatieh	Bent Jbeil	5,894
El Nabatieh	El Nabatieh	2,021
El Nabatieh	Hasbaya	1,614
Beirut	Beirut	244
Mount Lebanon	Baabda	115
South	Jezzine	87
South	Saida	20
Mount Lebanon	Aley	19
Mount Lebanon	Chouf	5
Total		26,232

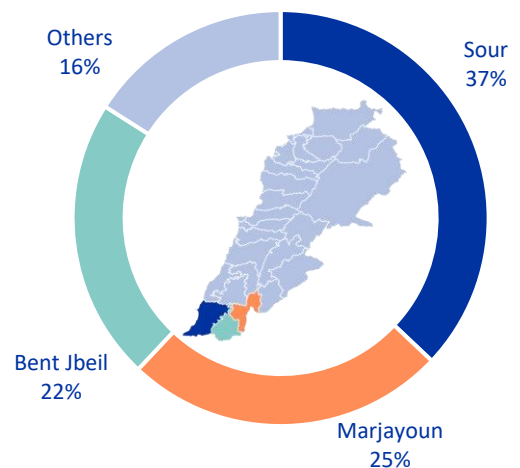
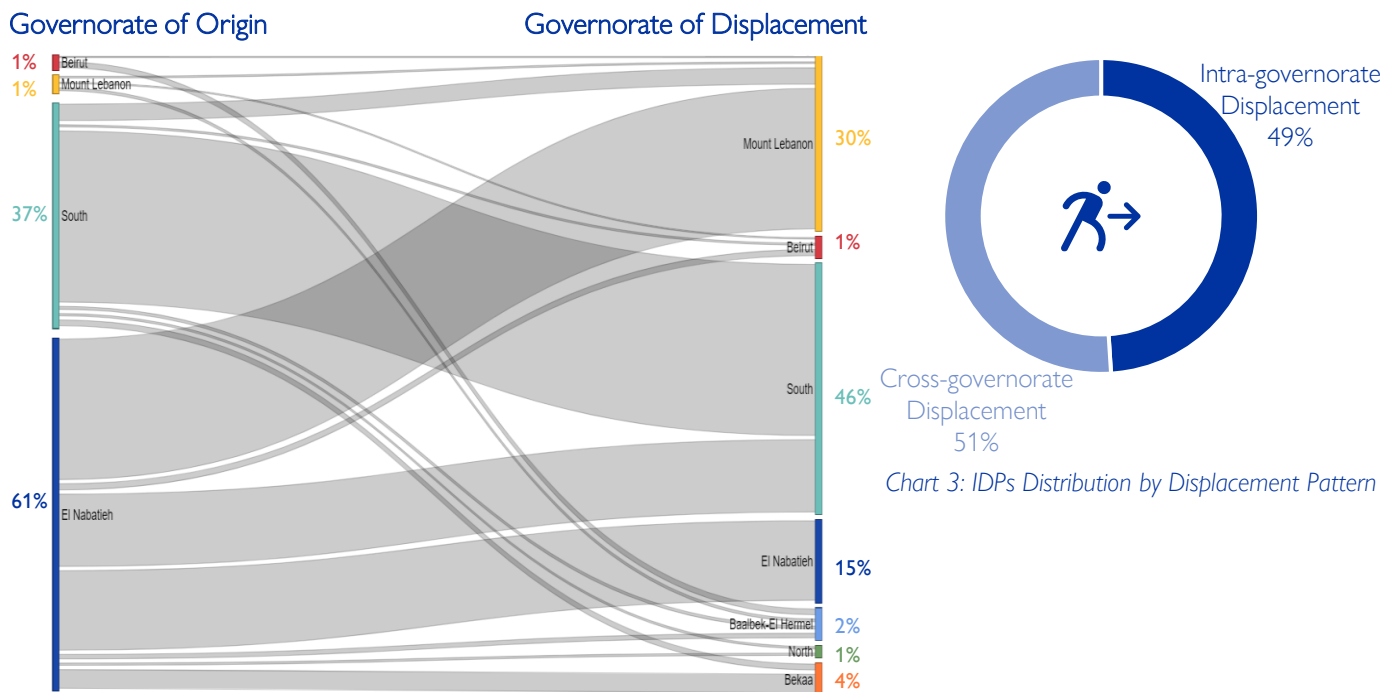


Chart 2: IDPs Distribution by Governorate of Departure

61% of departures originate from El Nabatieh, across four districts. However, while the South governorate has less overall departures, 37% of the overall displacement has originated from Sour, in the South.

Movement of IDPs from Governorate of Origin to Governorate of Displacement



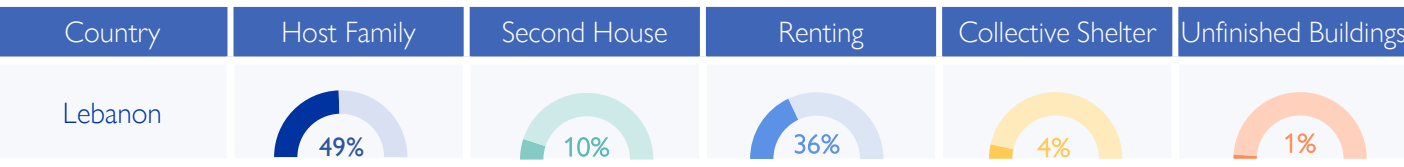
Overall, 51% of the displacement has occurred beyond the boundaries of the IDPs' governorate of origin. While most of the IDPs originate from El Nabatieh, only 15% sought safety in another location in the governorate. In the South governorate, where 37% of IDPs originated, 33% choose to move internally within the governorate.

Arrivals in the Last Week – (1 to 7 November)

Governorate	District	# of Cadasters	# of Locations	IDPs
Baalbek-El Hermel	Baalbek	2	2	10
Beirut	Beirut	2	2	3
Bekaa	Rachaya	2	2	202
Bekaa	West Bekaa	1	1	2
Bekaa	Zahle	1	1	5
El Nabatieh	El Nabatieh	13	13	316
El Nabatieh	Hasbaya	1	1	60
El Nabatieh	Marjaayoun	1	1	1
Mount Lebanon	Aley	10	13	259
Mount Lebanon	Baabda	6	11	113
Mount Lebanon	Chouf	5	8	187
Mount Lebanon	El Meten	6	7	272
Mount Lebanon	Jbeil	1	1	2
Mount Lebanon	Kesrwane	2	2	30
North	El Batroun	1	1	10
South	Saida	10	13	223
South	Sour	10	11	539
Total		74	90	2,234

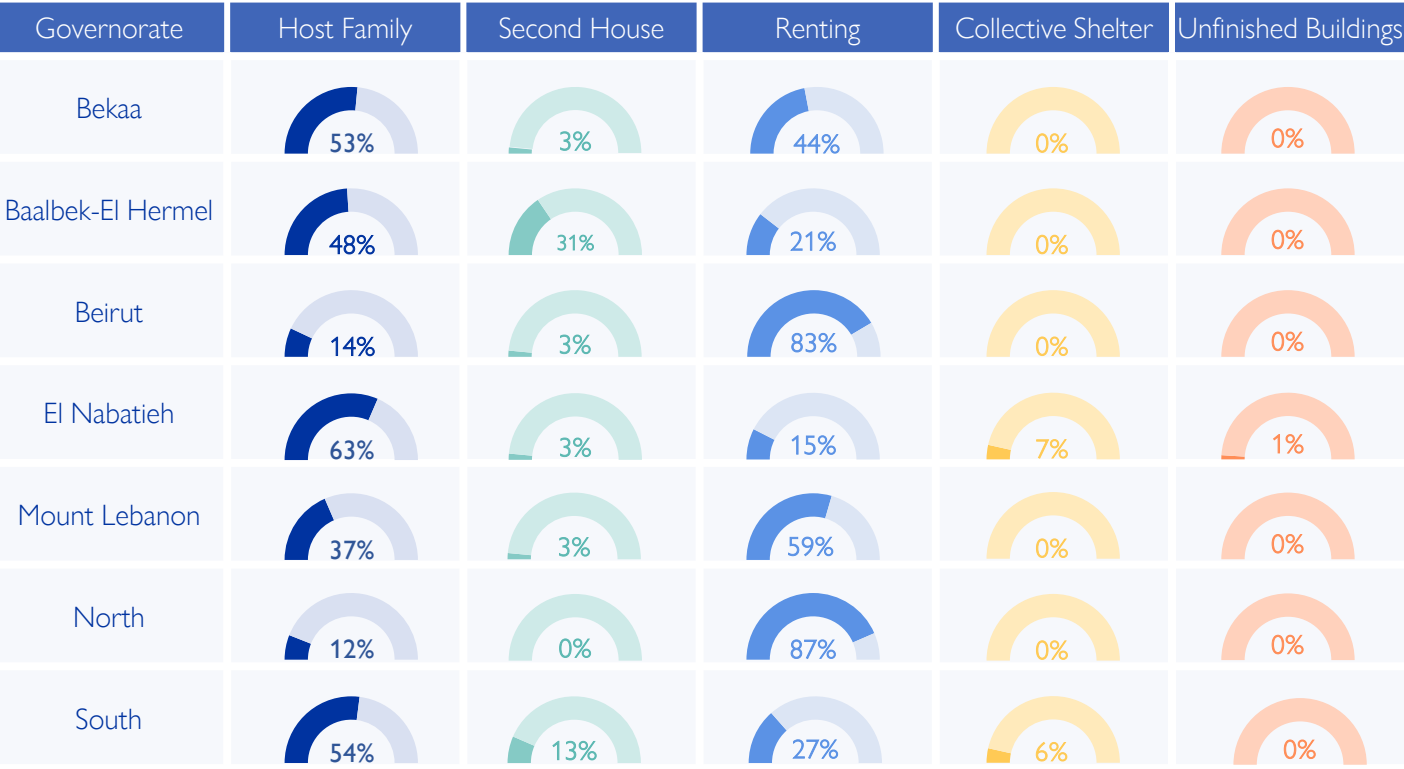
Since Round nine, the total number of IDPs increased by 524. However, in the past week, in 74 cadasters across 17 districts have recorded 2,234 new IDPs. These individuals may be experiencing displacement for the first time, or this could be a secondary movement, for these reasons, coupled with the complex nature of displacement monitoring, explains why the figure of 2,234 new IDP arrivals is higher than the increase since Round nine is 524 IDPs only.

IDPs Distribution by Shelter Type – By Governorate



Around 49% of IDPs are currently living with host families, while 36% have opted for rental housing. Another 10% have relocated to their secondary residences. A smaller fraction, around 4%, are housed in Collective Shelters, with a further 1% having been reported to be staying in incomplete or unfinished buildings.

In Sour, there are presently four collective shelters accommodating 710 IDPs, and in Hasbaya, there are seven collective shelters hosting 276 IDPs. Additionally, there are reports of 20 IDPs residing in unfinished buildings in Bent Jbeil.



Displacement Demographics

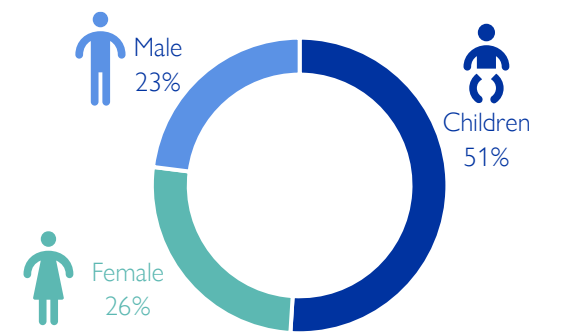


Chart 4: Displacement Demographics Based on Round 9 data: Based on Round 9 data, 51% of IDPs are children (< 18 years), while 26% are female adults and 23% are male adults.

Methodology

The objective of the Mobility Snapshot is to support the broader humanitarian community in preparedness and response planning. Multi-layered data is routinely captured through Rounds using a suite of methodological tools designed to track and monitor displacement. These tools are in line with the [DTM Global Methodological Framework](#). Data is collected nationwide through a combination of face-to-face and remote data collection methods, utilizing a network of over 44 enumerators and 3,600 key informants. These key informants consist of government officials, mukhtars, community representatives, and neighborhood focal points.

The following citation is required when using any data and information included in this information product: "International Organization for Migration (IOM), October 2023. DTM Mobility Snapshot, Round 10. IOM, Lebanon". For more information on terms and conditions of DTM reports and information products, please refer to <https://dtm.iom.int/terms-and-conditions>.