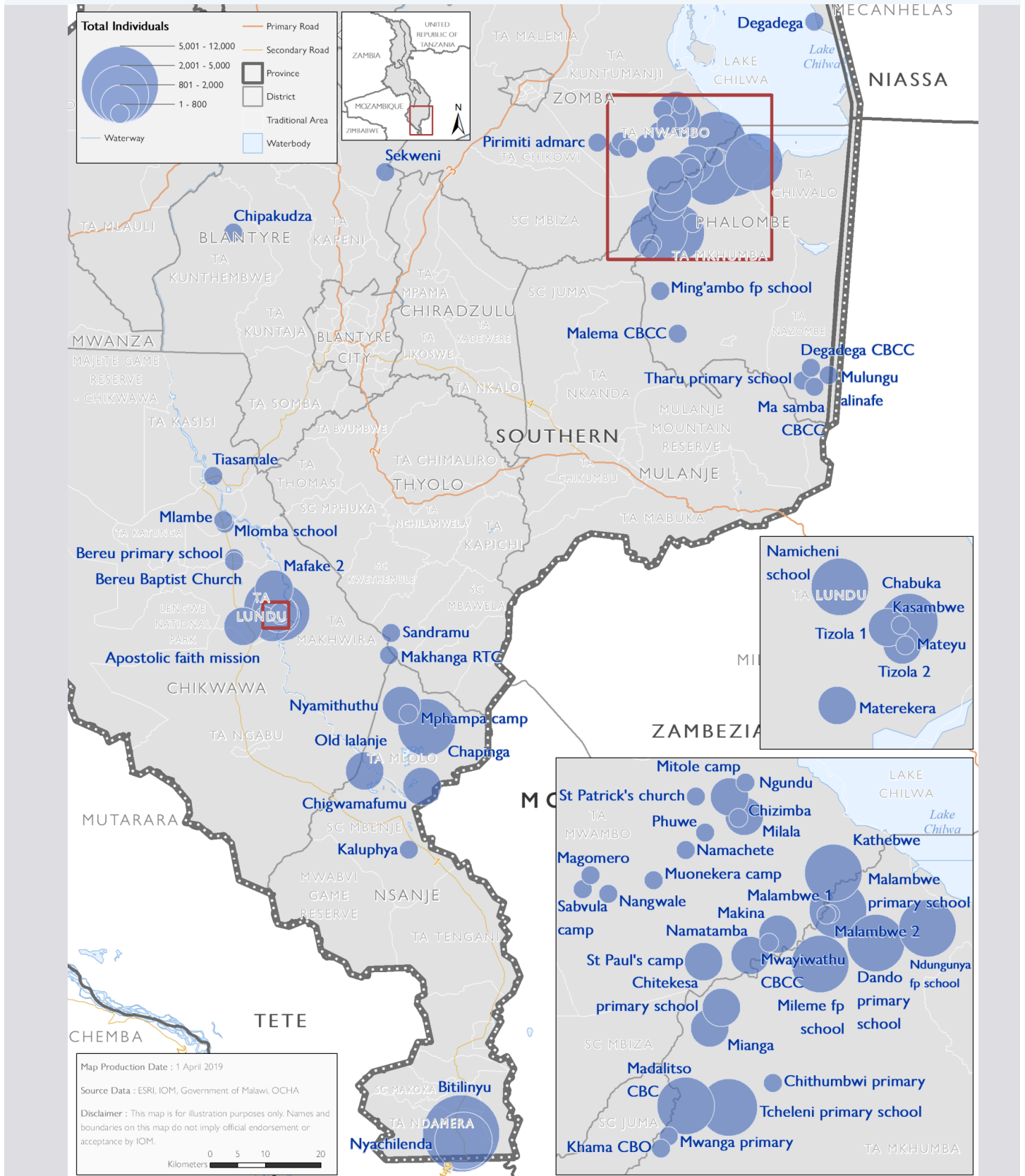


OVERVIEW

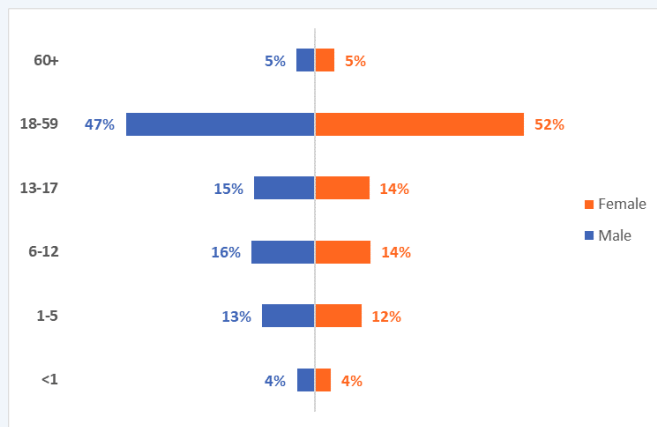
Since the beginning of March 2019, Malawi has experienced floods and sustained heavy rains caused by the tropical cyclone Idai weather system. IOM, in close coordination with the Government of Malawi through the Department of Disaster Management Affairs (DoDMA), conducted multi-sectoral location assessments in Chikwawa, Nsanje, Phalombe, Zomba districts from the 26th to the 31st of March 2019.



DEMOGRAPHICS

76,471 individuals (17,254 households) were reported across the 63 assessed displacement sites. The IDP population is composed of 58% of females and 42% of males. As seen in *Figure 1*, the largest age cohort is 18-59 years (52% female, 42% male), followed by 6-12 years (14% female, 16% male), and 13-17 years (14% female, 15% male). In terms of nationality, 330 Mozambicans were identified in two sites in Nsanje district.

Figure 1



SITE INFORMATION

All the displacement sites that were assessed are collective centres. 30 of the displacement sites are schools, 9 are community centres and the remaining (25) are classified as other.

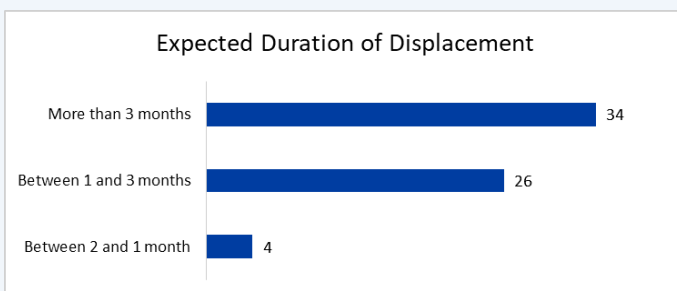
Twenty-seven of the sites reported having a site management agency, and the remaining 37 reported no agency.

60 of 64 are reported to be physically accessible. The remaining four sites reported that it was not safe and secure to access the site.

RETURN INTENTIONS

As seen in *Figure 2*, in 34 of the 64 sites the majority of individuals expect to be displaced for more than three months while in 26 sites, IDPs expect to be displaced for one to three months. In 4 sites, individuals expect to be displaced for one to two months.

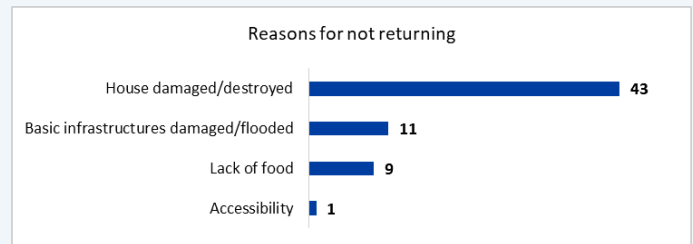
Figure 2



In 20 sites, the majority of IDPs reported that they were displaced from Phalombe district. In 18 of the 64 sites the majority of IDPs are from Zomba while in 16 sites most individuals are from Chikwawa.

In the majority of sites (43 sites of 64) it was reported that damaged or destroyed houses is the primary reason they are unable to return. The remaining reasons are basic infrastructure damage (11), lack of food (9) and accessibility (1), as seen in *Figure 3*.

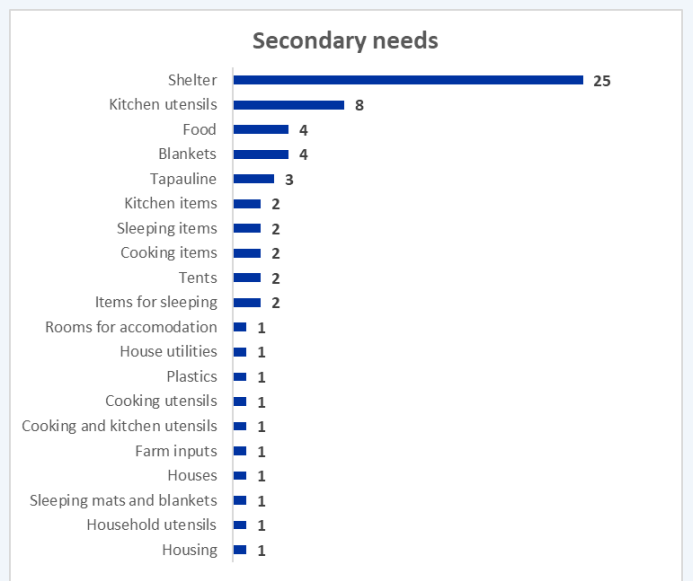
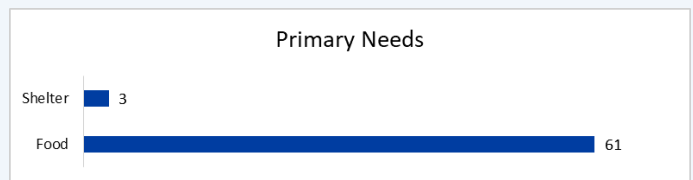
Figure 3



NEEDS OVERVIEW

As seen in *Figure 4*, the primary need reported in 61 sites is food. Three sites reported shelter as their main priority. The most reported secondary need in 25 sites is shelter related, such as construction materials, shelter or NFIs. In 8 sites kitchen sets is the most cited secondary need, and in another 4 sites the need is related to food.

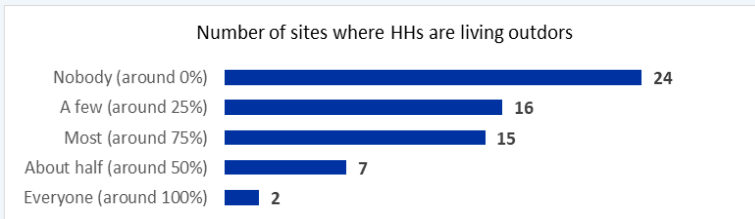
Figure 4



SHELTER

In 2 sites, all IDPs are sleeping outdoors while in 15 sites, 75% of IDPs are sleeping outdoors. In 7 sites, 50% of the population is sleeping outdoors. About half of the IDPs are sleeping in emergency shelters in 6 sites, and 75% of the population is sleeping in emergency shelters in 4 sites.

Figure 5

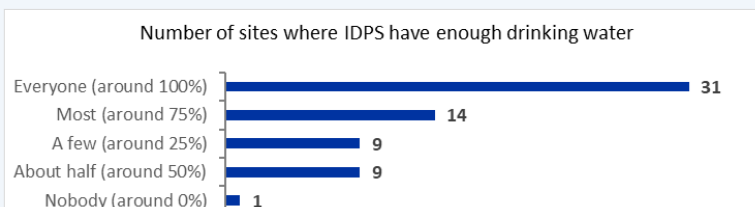


WASH

In 47 sites out of the 64, the main source of water is a tube well or a borehole. In 6 sites, IDPs get water from unprotected wells. In 4 sites, the main source of water is the public tap or standpipe.

In 31 sites, all IDPs have enough water to drink while in 14 sites, 75% of the population has enough water to drink. In 9 sites, half of the population does not have enough water while in 1 site no one has access to drinking water.

Figure 6



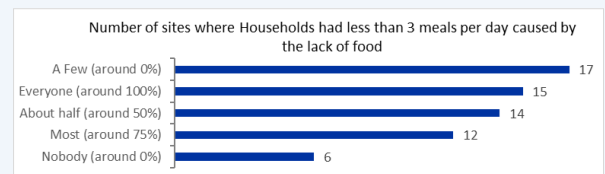
In 21 sites, no one has access to bathing or shower facilities while in 22 sites, only 25% of IDPs has access to shower facilities.

In 33 sites, the most common type of sanitation facilities are pit latrines with slab, while in 26, pit latrines without a slab are predominant.

FOOD AND NUTRITION

In 15 sites, all IDPs have less than 3 meals per day. In 12 sites, 75% of the households are in a similar situation while in 14 sites, half of the IDP households have less than 3 meals per day.

Figure 7



HEALTH

In 46 out of the 64 sites, the health facility is more than 30 minutes walking distance from the site. In 15 sites, the health facilities are up to 30 minutes walking distance while in 3 sites there are no reachable health facilities.

In 15 sites, lack of funds is preventing most IDPs from accessing health care services while in 8 sites there is no medicine available in health centres.

EDUCATION

In 28 sites, none of the children from 3 to 5 are attending school while in 9 of them, 75% of children are in the same situation. In 23 sites, none of the children from 6 to 12 are attending school while in 9 of them, 75% of children do not attend school. In 16 sites, none of the children from 13 to 17 are attending school and in 27 sites, 75% of children are in the same situation.

PROTECTION

In 38 sites there is no adequate lighting in any of the common spaces.

In 20 sites, none of the latrines are separated by sex while in 40 sites there are no sex-segregated bathing facilities.

In 54 sites out of the 64, there is a mechanism to ensure the safety of individuals in the site.

SEVERITY SCALE:

Shelter severity is measured using the percentage of households in each site sleeping in different types of shelters where the type of shelter is ordered by quality, i.e. from the best to the worst conditions.

Education severity is measured as the percentage of minors (persons less than 18 years) attending school.

Composite WASH severity is measured as the geometric mean of three severity measures:

- Water Access severity is measured using the number of IDPs with access to drinking water and the ones that have access to water for domestic use (i.e. for laundry, cooking, etc.);
- Hygiene Access severity is measured using the number of IDPs with access to functioning bathing/shower facilities and IDPs that have enough soap;
- Sanitation severity is based on the percentages of people living in areas where open defecation and/or dumped garbage is frequently visible.

For more detailed information about the methodology, please see technical document [here](#).

Table 1: WASH Severity by Site and Estimate of Number of Individuals in critical conditions (continued on next page)

Site Name	District	Water Severity Index	Hygiene Severity Index	Sanitation Severity Index	Composite WASH Index	Maximum estimate of people in the worst condition
Makina	Zomba	10.00	8.99	1.00	high	1230
Mwayiwathu CBCC	Zomba	1.00	8.58	2.30	medium	580
Milala	Zomba	1.00	10.00	4.67	high	1620
Chizimba	Zomba	7.75	7.75	1.00	high	350
Phuwe	Zomba	5.02	8.99	1.00	high	420
Chigwamafumu	Nsanje	6.69	8.99	7.75	very high	1950
Makhanga RTC	Nsanje	8.26	8.58	3.25	high	170
Namicheni school	Chikwawa	7.75	8.58	1.00	high	3100
Mateyu	Chikwawa	7.75	8.99	1.00	high	670
Tizola 1	Chikwawa	6.03	8.99	6.51	high	1140
Chabuka	Chikwawa	6.03	8.99	1.00	high	2360
Apostolic faith in Jesus	Chikwawa	10.00	8.58	1.00	high	1260
Mileme fp school	Phalombe	5.02	8.99	7.75	very high	2390
Dando primary school	Phalombe	9.30	8.58	1.00	high	2710
Malambwe 1	Phalombe	1.00	5.98	6.20	high	140
Malambwe 2	Phalombe	3.01	8.58	1.00	medium	110
Malambwe primary school	Phalombe	3.01	10.00	2.30	high	2980
Chitekesa primary school	Phalombe	10.00	7.99	3.60	very high	820
Mianga	Phalombe	1.00	7.99	1.00	medium	1200
Madalitso CBC	Phalombe	1.00	8.99	1.00	medium	2830
Mafake 2	Chikwawa	5.50	8.99	5.31	high	1030
TIZOLA 2	Chikwawa	1.00	8.99	1.00	medium	1910
Kasambwe	Chikwawa	4.02	10.00	1.00	high	540
Apostolic faith mission	Chikwawa	7.36	8.99	1.00	high	920
Pirimiti admarc	Zomba	1.00	5.85	1.00	medium	190
Sabvula camp	Zomba	10.00	7.99	4.18	very high	400
Magomero	Zomba	3.01	7.99	2.30	high	360

Table 1: WASH Severity by Site and Estimate of Number of Individuals in critical conditions (continued)

Site Name	District	Water Severity Index	Hygiene Severity Index	Sanitation Severity Index	Composite WASH Index	Maximum estimate of people in the worst condition
Sekweni	Zomba	1.00	5.85	1.00	medium	120
Chipakudza	Chikwawa	7.75	8.99	6.36	high	720
Tcheleni primary school	Phalombe	5.50	8.99	1.00	high	3410
Mwanga primary	Phalombe	10.00	10.00	1.00	very high	560
Chithumbwi primary	Phalombe	10.00	10.00	1.00	very high	350
Khama CBO	Phalombe	1.00	4.31	10.00	high	320
Ndungunya fp school	Phalombe	1.00	5.85	5.50	high	2000
Kaluphya	Nsanje	10.00	8.99	7.75	very high	570
Nyamithuthu	Nsanje	10.00	8.58	3.25	very high	840
Mphampa camp	Nsanje	9.30	8.99	6.66	very high	290
Old lalanje	Nsanje	7.75	10.00	2.30	high	1260
Bereu Baptist Church	Chikwawa	1.00	10.00	1.00	high	140
Mlambe	Chikwawa	1.00	4.31	1.00	medium	10
Mlomba school	Chikwawa	1.00	8.99	8.35	high	270
Kathebwe	Zomba	1.00	8.99	1.00	medium	2450
Namatamba	Zomba	5.02	5.98	1.00	medium	860
St Paul's camp	Zomba	1.00	10.00	1.00	high	810
Muonekera camp	Zomba	5.02	8.99	1.00	high	260
Chapinga	Nsanje	5.50	8.58	2.84	high	1700
Namachete	Zomba	7.75	8.99	1.00	high	690
Sandramu	Nsanje	5.50	8.99	7.75	very high	190
Ma samba CBCC	Phalombe	1.00	10.00	2.30	high	200
Tharu primary school	Phalombe	9.30	7.99	2.30	very high	450
Mulungu alinafe	Phalombe	1.00	7.75	3.60	high	160
Degadega	Phalombe	7.75	8.58	4.18	high	330
Degadega CBCC	Phalombe	1.00	5.98	1.00	medium	320
Nangwale	Zomba	1.00	5.98	1.00	medium	240
Tiasamale	Chikwawa	6.69	10.00	1.00	high	510
Bereu primary school	Chikwawa	1.00	5.98	2.84	medium	330
Materekera	Chikwawa	6.69	10.00	2.84	high	1640
Mitole camp	Zomba	1.00	10.00	1.00	high	820
Ming'ambo fp school	Phalombe	9.05	10.00	6.51	very high	180
Malema CBCC	Phalombe	10.00	10.00	1.00	very high	240
St Patrick's church	Zomba	1.00	5.98	3.60	medium	650
Ngundu	Zomba	1.00	8.99	1.00	medium	340
Bitilinyu	Nsanje	9.30	8.99	3.60	very high	11380
Nyachilenda	Nsanje	10.00	8.99	3.25	very high	4750

Table 2: Shelter Severity by Site and Estimate of Number of Individuals in critical conditions (continued on next page)

Site Name	District	Shelter Severity Index	Classification	Maximum estimated number of people in the worst condition
Makina	Zomba	3.25	medium	150
Mwayiwathu CBCC	Zomba	7.75	very high	150
Milala	Zomba	1.75	low	20
Chizimba	Zomba	3.25	medium	40
Phuwe	Zomba	5.50	high	80
Chigwamafumu	Nsanje	3.25	medium	20
Makhanga RTC	Nsanje	3.25	medium	0
Namicheni school	Chikwawa	5.50	high	280
Mateyu	Chikwawa	5.50	high	70
Tizola 1	Chikwawa	5.50	high	130
Chabuka	Chikwawa	4.75	medium	150
Apostolic faith in Jesus	Chikwawa	1.00	very low	20
Mileme fp school	Phalombe	5.50	high	140
Dando primary school	Phalombe	1.00	very low	40
Malambwe 1	Phalombe	8.50	very high	30
Malambwe 2	Phalombe	1.00	very low	0
Malambwe primary school	Phalombe	5.50	high	160
Chitekesa primary school	Phalombe	3.25	medium	10
Mianga	Phalombe	1.00	very low	20
Madalitso CBC	Phalombe	8.50	very high	450
Mafake 2	Chikwawa	4.00	medium	20
TIZOLA 2	Chikwawa	7.75	very high	440
Kasambwe	Chikwawa	7.75	very high	180
Apostolic faith mission	Chikwawa	1.00	very low	10
Pirimiti admarc	Zomba	1.75	low	0
Sabvula camp	Zomba	3.25	medium	30
Magomero	Zomba	1.00	very low	0
Sekweni	Zomba	1.00	very low	10
Chipakudza	Chikwawa	7.75	very high	100
Tcheleni primary school	Phalombe	7.00	high	380
Mwanga primary	Phalombe	10.00	critical	290
Chithumbwi primary	Phalombe	1.00	very low	10

Table 2: Shelter Severity by Site and Estimate of Number of Individuals in critical conditions (continued)

Site Name	District	Shelter Severity Index	Classification	Maximum estimated number of people in the worst condition
Khama CBO	Phalombe	10.00	critical	120
Ndungunya fp school	Phalombe	10.00	critical	850
Kaluphya	Nsanje	8.50	very high	100
Nyamithuthu	Nsanje	10.00	critical	180
Mphampa camp	Nsanje	8.50	very high	50
Old lalanje	Nsanje	5.50	high	70
Bereu Baptist Church	Chikwawa	1.00	very low	0
Mlambe	Chikwawa	3.25	medium	20
Mlomba school	Chikwawa	1.00	very low	0
Kathebwe	Zomba	7.75	very high	370
Namatamba	Zomba	4.75	medium	50
St Paul's camp	Zomba	5.50	high	120
Muonekera camp	Zomba	3.25	medium	20
Chapinga	Nsanje	10.00	critical	450
Namachete	Zomba	1.00	very low	10
Sandramu	Nsanje	8.50	very high	20
Ma samba CBCC	Phalombe	10.00	critical	40
Tharu primary school	Phalombe	7.75	very high	200
Mulungu alinafe	Phalombe	1.00	very low	0
Degadega	Phalombe	3.25	medium	20
Degadega CBCC	Phalombe	3.25	medium	20
Nangwale	Zomba	1.00	very low	0
Tiasamale	Chikwawa	1.00	very low	10
Bereu primary school	Chikwawa	1.00	very low	0
Materekera	Chikwawa	7.75	very high	280
Mitole camp	Zomba	1.00	very low	10
Ming'ambo fp school	Phalombe	10.00	critical	40
Malema CBCC	Phalombe	7.75	very high	20
St Patrick's church	Zomba	1.00	very low	10
Ngundu	Zomba	1.00	very low	0
Bitilinyu	Nsanje	4.75	medium	580
Nyachilenda	Nsanje	7.75	very high	770

Table 3: Education Severity by Site and Estimate of Number of Individuals in critical conditions (continued on next page)

Site Name	District	% of children without school access	Severity Classification	Maximum estimate of Children without Education Access
Makina	Zomba	59	very high	416
Mwayiwathu CBCC	Zomba	25	medium	112
Milala	Zomba	43	high	254
Chizimba	Zomba	32	high	90
Phuwe	Zomba	56	very high	138
Chigwamafumu	Nsanje	39	high	499
Makhanga RTC	Nsanje	51	very high	42
Namicheni school	Chikwawa	44	very high	910
Mateyu	Chikwawa	66	critical	179
Tizola 1	Chikwawa	72	critical	478
Chabuka	Chikwawa	77	critical	1389
Apostolic faith in Jesus	Chikwawa	36	high	207
Mileme fp school	Phalombe	64	very high	275
Dando primary school	Phalombe	100	critical	1800
Malambwe 1	Phalombe	100	critical	59
Malambwe 2	Phalombe	49	very high	29
Malambwe primary school	Phalombe	100	critical	1902
Chitekesa primary school	Phalombe	63	very high	48
Mianga	Phalombe	100	critical	437
Madalitso CBC	Phalombe	49	very high	609
Mafake 2	Chikwawa	61	very high	313
TIZOLA 2	Chikwawa	63	very high	760
Kasambwe	Chikwawa	100	critical	321
Apostolic faith mission	Chikwawa	100	critical	638
Pirimiti admarc	Zomba	85	critical	158
Sabvula camp	Zomba	46	very high	131
Magomero	Zomba	88	critical	191
Sekweni	Zomba	77	critical	27
Chipakudza	Chikwawa	68	critical	165
Tcheleni primary school	Phalombe	72	critical	1530
Mwanga primary	Phalombe	35	high	76
Chithumbwi primary	Phalombe	45	very high	91

Table 3: Education Severity by Site and Estimate of Number of Individuals in critical conditions (continued)

Site Name	District	% of children without school access	Severity Classification	Maximum estimate of Children without Education Access
Khama CBO	Phalombe	100	critical	70
Ndungunya fp school	Phalombe	68	critical	169
Kaluphya	Nsanje	50	very high	181
Nyamithuthu	Nsanje	60	very high	318
Mphampa camp	Nsanje	67	critical	110
Old lalanje	Nsanje	46	very high	300
Bereu Baptist Church	Chikwawa	56	very high	37
Mlambe	Chikwawa	59	very high	94
Mlomba school	Chikwawa	95	critical	139
Kathebwe	Zomba	72	critical	569
Namatamba	Zomba	94	critical	374
St Paul's camp	Zomba	25	medium	142
Muonekera camp	Zomba	100	critical	86
Chapinga	Nsanje	92	critical	368
Namachete	Zomba	81	critical	360
Sandramu	Nsanje	70	critical	64
Ma samba CBCC	Phalombe	81	critical	92
Tharu primary school	Phalombe	41	high	52
Mulungu alinafe	Phalombe	43	high	18
Degadega	Phalombe	57	very high	102
Degadega CBCC	Phalombe	88	critical	92
Nangwale	Zomba	46	very high	66
Tiasamale	Chikwawa	76	critical	142
Bereu primary school	Chikwawa	100	critical	115
Materekera	Chikwawa	47	very high	331
Mitole camp	Zomba	81	critical	153
Ming'ambo fp school	Phalombe	63	very high	63
Malema CBCC	Phalombe	95	critical	207
St Patrick's church	Zomba	51	very high	34
Ngundu	Zomba	78	critical	113
Bitilinyu	Nsanje	94	critical	308
Nyachilenda	Nsanje	35	high	810

Table 4: Number of Individuals by Site (continued on next page)

Site Name	District	Total HHs	Total Individuals
Makina	Zomba	496	1,230
Mwayiwathu CBCC	Zomba	190	773
Milala	Zomba	343	1,615
Chizimba	Zomba	130	472
Phuwe	Zomba	137	422
Chigwamafumu	Nsanje	390	1,949
Makhanga RTC	Nsanje	34	170
Namicheni school	Chikwawa	917	4,137
Mateyu	Chikwawa	122	666
Tizola 1	Chikwawa	228	1,140
Chabuka	Chikwawa	487	2,363
Apostolic faith in Jesus	Chikwawa	300	1,255
Mileme fp school	Phalombe	460	2,393
Dando primary school	Phalombe	707	2,710
Malambwe 1	Phalombe	40	139
Malambwe 2	Phalombe	40	140
Malambwe primary school	Phalombe	288	2,975
Chitekesa primary school	Phalombe	212	816
Mianga	Phalombe	412	1,198
Madalitso CBC	Phalombe	565	2,827
Mafake 2	Chikwawa	317	1,025
TIZOLA 2	Chikwawa	554	1,913
Kasambwe	Chikwawa	227	536
Apostolic faith mission	Chikwawa	254	915
Pirimiti admarc	Zomba	60	249
Sabvula camp	Zomba	95	404
Magomero	Zomba	72	360
Sekweni	Zomba	104	161
Chipakudza	Chikwawa	120	718
Tcheleni primary school	Phalombe	683	3,411
Mwanga primary	Phalombe	278	557
Chithumbwi primary	Phalombe	132	352

For more detailed information about each site including demographics, needs, and vulnerabilities, please see [site profiles here](#).

Table 4: Number of Individuals by Site (continued)

Site Name	District	Total HHs	Total Individuals
Khama CBO	Phalombe	114	317
Ndungunya fp school	Phalombe	814	2,310
Kaluphya	Nsanje	131	571
Nyamithuthu	Nsanje	168	841
Mphampa camp	Nsanje	58	289
Old lalanje	Nsanje	246	1,259
Bereu Baptist Church	Chikwawa	48	141
Mlambe	Chikwawa	65	265
Mlomba school	Chikwawa	30	271
Kathebwe	Zomba	460	2,452
Namatamba	Zomba	163	857
St Paul's camp	Zomba	211	812
Muonekera camp	Zomba	80	260
Chapinga	Nsanje	431	2,265
Namachete	Zomba	227	686
Sandramu	Nsanje	26	188
Ma samba CBCC	Phalombe	35	200
Tharu primary school	Phalombe	256	450
Mulungu alinafe	Phalombe	68	216
Degadega	Phalombe	75	445
Degadega CBCC	Phalombe	83	319
Nangwale	Zomba	89	238
Tiasamale	Chikwawa	165	510
Bereu primary school	Chikwawa	66	327
Materekera	Chikwawa	350	1,639
Mitole camp	Zomba	212	815
Ming'ambo fp school	Phalombe	36	178
Malema CBCC	Phalombe	20	243
St Patrick's church	Zomba	145	648
Ngundu	Zomba	99	338
Bitilinyu	Nsanje	1,922	11,384
Nyachilenda	Nsanje	967	4,746
Grand Total		17,254	76,471

For more detailed information about each site including demographics, needs, and vulnerabilities, please see [site profiles here](#).