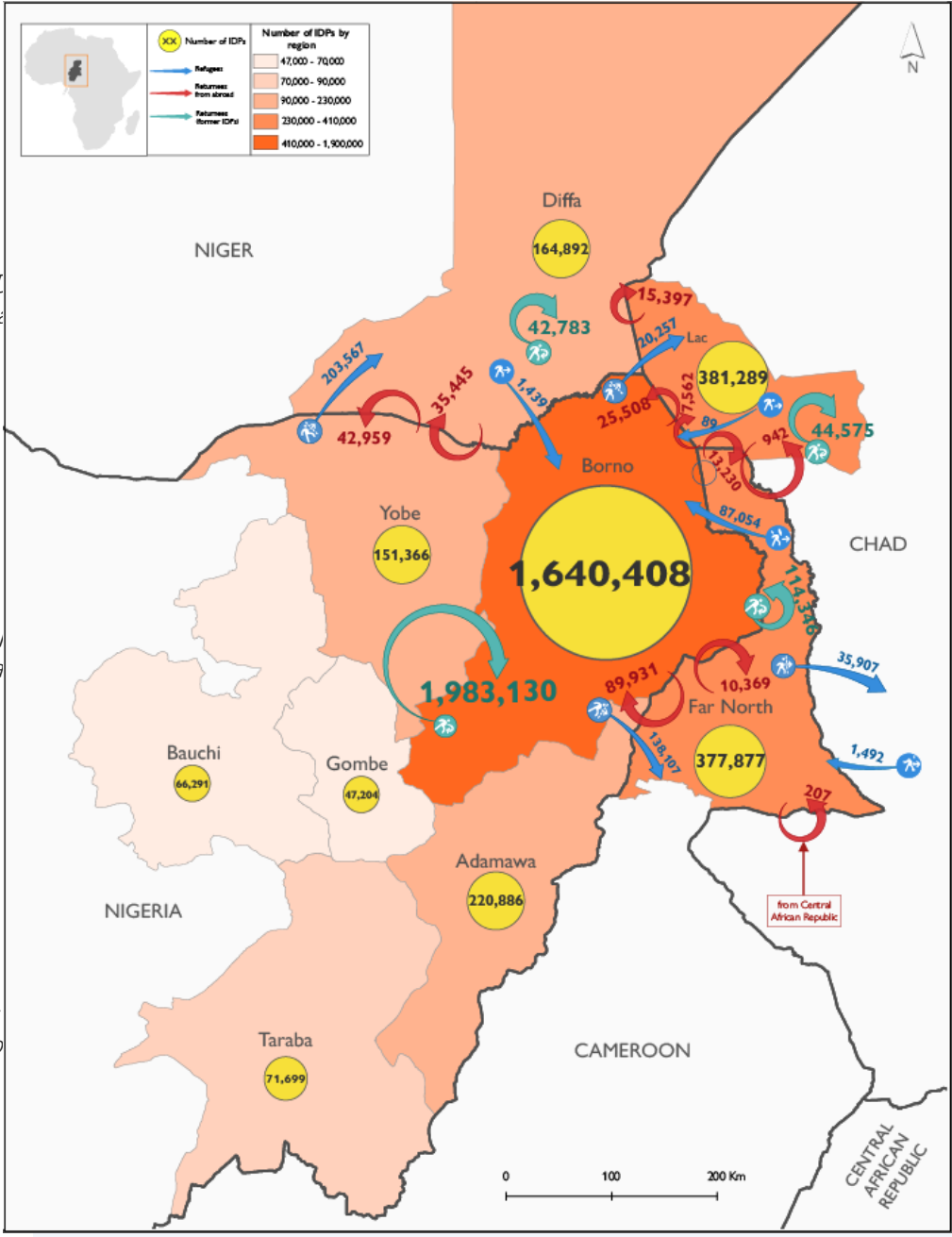
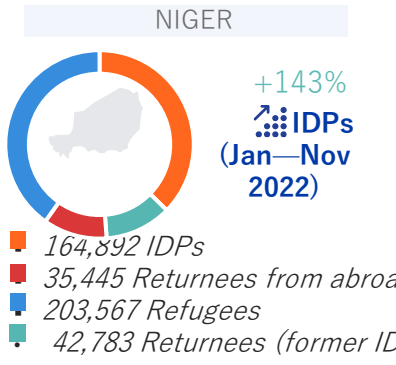
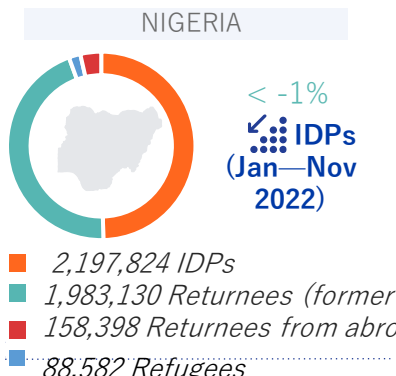
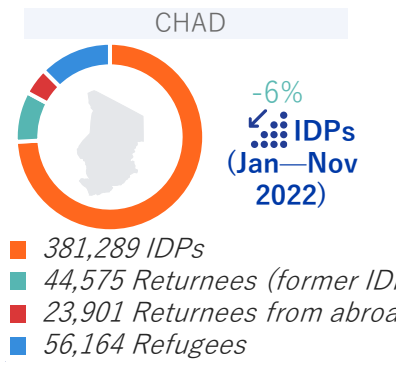
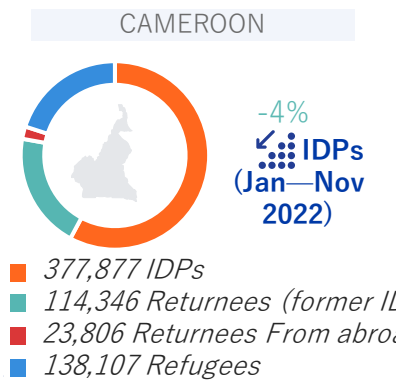




**Context :** The crisis currently affecting the Lake Chad Basin states results from a complex combination of factors, including conflict with Non-State Armed Groups, extreme poverty, underdevelopment and a changing climate, which together have triggered significant displacement of populations. As of 30 November 2022, Cameroon, Chad, Niger and Nigeria were hosting an estimated 6,034,686 affected individuals made up of Internally Displaced Persons (IDPs), Refugees (both in- and out-of-camp) and Returnees (Former IDPs and Returnees from abroad). 73 per cent of the affected population (representing 4,427,934 individuals) were located in Nigeria, while 11 per cent resided in Cameroon (654,136 individuals), 8 per cent in Chad (505,928 individuals) and 7 per cent in Niger (446,687 individuals).



This map is for illustrative purposes only. The boundaries and names shown, and the designations used on this map do not imply official endorsement or acceptance by the International Organization for Migration.

Sources and dates: DTM Cameroon (Round 24 - February 2022), DTM Chad (August 2022), DTM Nigeria (July 2022), Government of Niger (28/02/2022), DREC-M/R/UNHCR West and Central Africa (31 October 2022), UNHCR Cameroon (31/10/2022), CNARR & UNHCR (31/10/2022)