

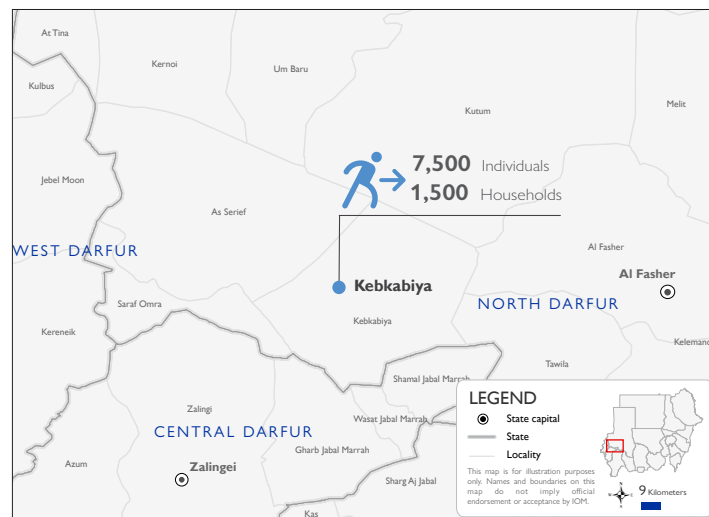
The DTM Emergency Event Tracking (EET) is deployed to track sudden displacement and population movements, provide more frequent updates on the scale of displacement, and quantify the affected population when needed. As a subcomponent of the new Mobility Tracking methodology in Sudan (Round Four), and activated on a need basis, EET utilises a broad network of key informants to capture best estimates of the affected population presence per location – a useful tool for humanitarian response planning and design.

## Event Overview

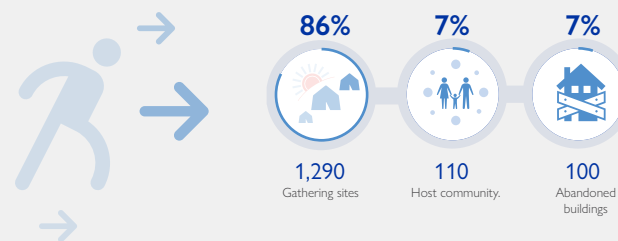


DTM teams activated EET to monitor the displacement of individuals affected by heavy rains and flooding in Kebkabiya town, Kebkabiya locality, North Darfur on 31 August 2022. The first EET update estimates that a total number of 7,500 individuals (1,500 households) are currently displaced across the Kebkabiya town, North Darfur. The entire IDP caseload (100%) was originally displaced from Kebkabiya town and currently seeking shelters in locations at the higher grounds across the town.

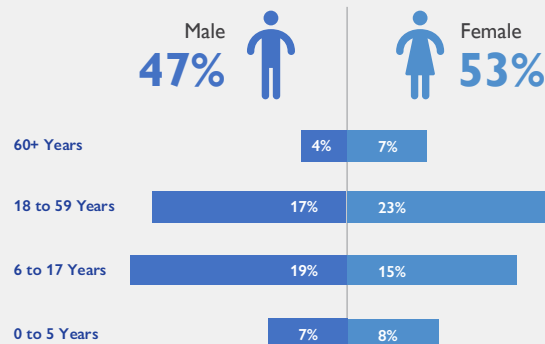
DTM field teams have confirmed one death and further five individuals sustained injuries. All displaced individuals are Sudanese nationals. At least 2,314 cases of additional vulnerabilities in need of assistance and support were identified by key informants through DTM's Protection indicator. Additionally, DTM Sudan estimates that there are approximately 1,125 persons with disabilities among the IDP caseload.\* Based on a ranking scale, and the three priority needs across the caseload are Food, Non-Food Items, and Nutrition.



## Shelter Indicator



## Demographics

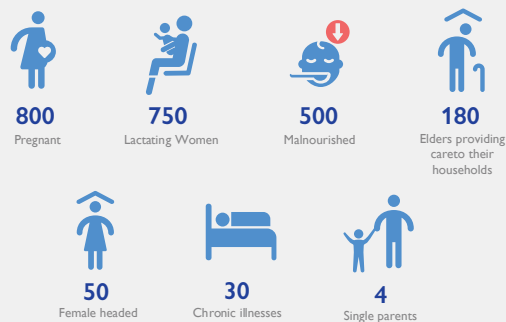


## Priority needs

Ranking scale



## Vulnerabilities<sup>1</sup>



## Return Intention

Data collected through the return intention indicator suggests that the entire IDP caseload (100%) intends to return to their sites of origin as soon as they can reconstruct their homes.

## IOM DISCLAIMER

The opinions expressed in the report are those of the authors and do not necessarily reflect the views of the International Organization for Migration (IOM). The designations employed and the presentation of material throughout the report do not imply the expression of any opinion whatsoever on the part of IOM concerning the legal status of any country, territory, city or area, or of its authorities, or concerning its frontiers or boundaries.

IOM is committed to the principle that humane and orderly migration benefits migrants and society. As an intergovernmental organization, IOM acts with its partners in the international community to: assist in the meeting of operational challenges of migration; advance understanding of migration issues; encourage social and economic development through migration; and uphold the human dignity and well-being of migrants.

<sup>1</sup> Using the WHO global estimate that approximately 15% of the total population are persons with disabilities (PwDs), DTM estimates a total of 152 PwDs among the IDP caseload registered. The remaining 82 vulnerabilities have been identified among the IDP caseload by key informants.