

SITE PROFILE

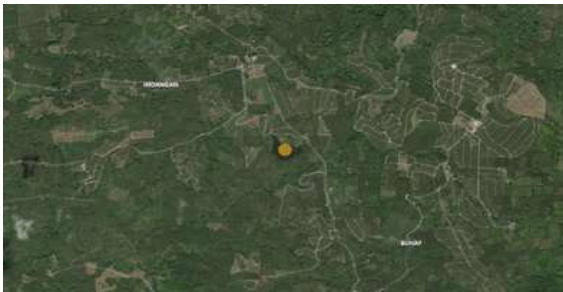
Indangan Camp Site

Brgy. Barangay Indangan, Makilala, North Cotabato

694 FAMILIES | 3,470 PERSONS | LATITUDE 6.9879056 | LONGITUDE 125.1497389

PRIORITY NEEDS

1st priority Shelter
2nd priority Food
3rd priority N/A



REASONS PREVENTING RETURN OF IDPs

House damaged/destroyed

The camp site need megaphones.

SITE DETAILS

Survey date	21 November 2019
Site ID	26
Site type	Empty Lot
Site classification	Spontaneous settlement
Date majority displaced	31 October 2019
Government-recognized	No
IDPs are for relocation	No
Site hosts indigenous people	No
IP groups in site	N/A

CAMP COORDINATION AND CAMP MANAGEMENT

Site Management Committee (SMC)	Yes
IDPs members of SMC	N/A
Organization/agency managing the site	Government
Registration activity	Yes
Service providers contact list visible on-site	Yes

SHELTER AND NON-FOOD ITEMS (NFIs)

Most common type of shelter	Tent
Available NFIs	None

WATER, SANITATION AND HYGIENE

Main source of water	Spring
Distance to main source of water	Offsite (>20 minutes)
Number of functioning toilets	1
Separate male and female latrines	No
Separate male and female bathing areas	Yes
Solid waste management	Garbage pickup n/a

FOOD AND NUTRITION

Frequency of food distribution	Irregular
Supplemental feeding for pregnant/lactating	Yes
Supplemental feeding for children	Yes

HEALTH

Prevalent health problems	Cough, colds, fever, diarrhea
Distance to nearest health facility	0-100 m

EDUCATION

Access to formal/informal education	Yes
Number of children attending school	None
Distance to nearest education facility	0-1 km

PROTECTION

Frequency of psychosocial support	Irregular
Security provided on-site	Yes
Security incidents are reported	No
Lighting in majority of communal points	Unknown

LIVELIHOOD

Typical sources of livelihood	Farming (irregular), bamboo weave
-------------------------------	-----------------------------------

INFORMATION NEEDS

Documents, food distribution, water and sanitation, protection services, legal services, security situation, distribution of non-food items, return, resettlement or migration

Information on groups with special needs is available upon request by parties with Data Sharing Agreements with IOM.