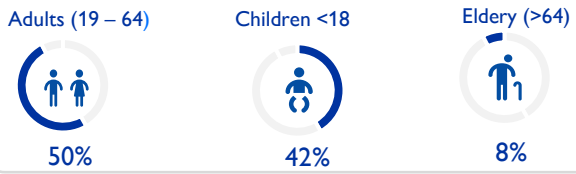
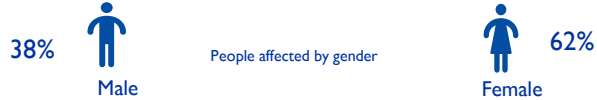




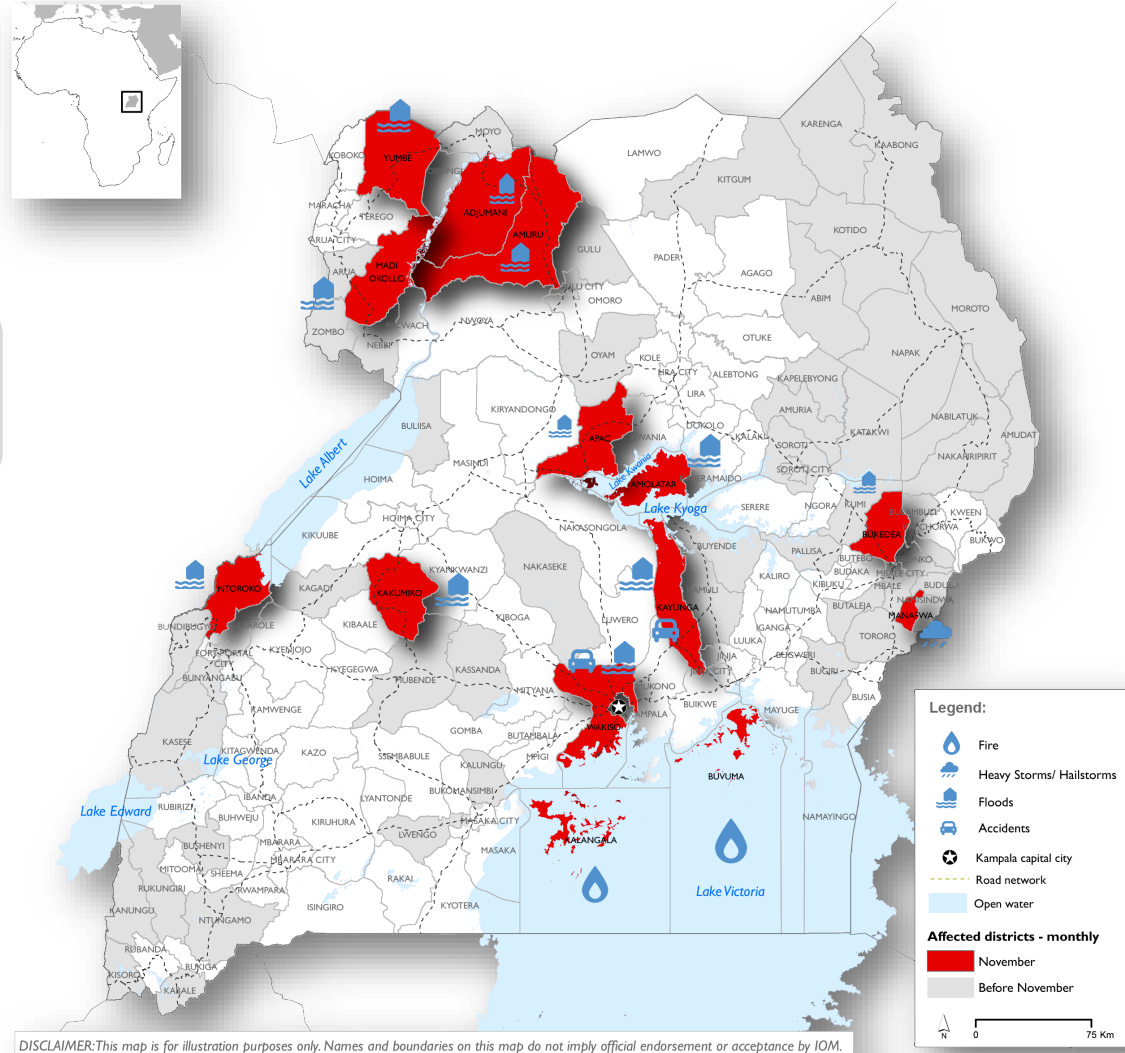
Overview of affected population – November 2023



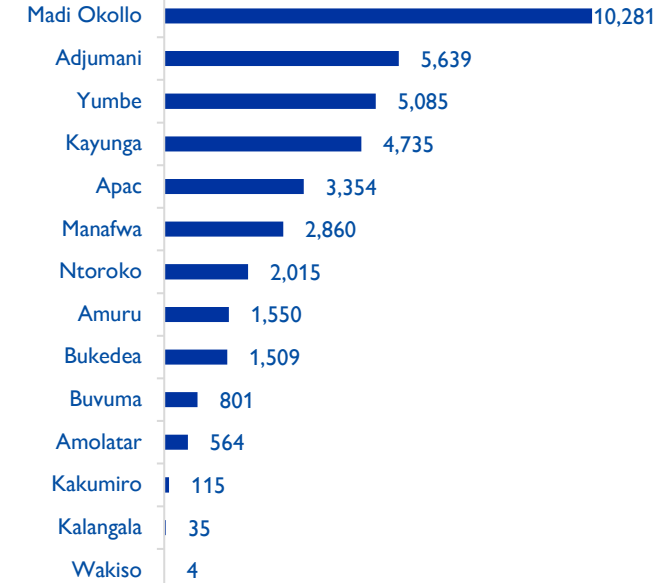
November 2023 observations

- The ongoing heavy rains in the nation triggered extreme weather events which include floods and heavy storms in the month of November.
- The disasters affected a total of 38,547 individuals, representing 7,854 households while 15,962 individuals from 2,839 households were internally displaced.
- Adults (19-64 years) were the most affected population group (50%), followed by children under 18 years (42%) and the elderly who were above 64 years (8%).
- The most pressing needs are food assistance, NFI, Hygiene promotion among others.
- Houses partially damaged totaled 4,019 while 1,594 houses were completely destroyed. 208 water facilities, 42 health facilities and 32 schools were also affected.
- Disasters have so far affected 215,299 individuals and displaced over 47,467 people as reported from January to November 2023.

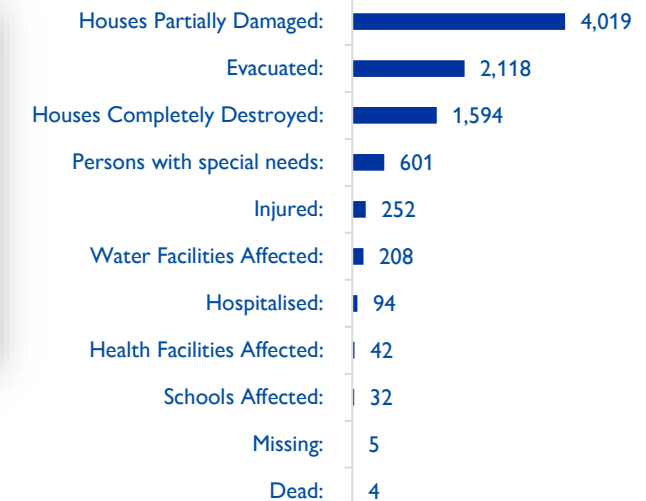
Districts affected in 2023



Affected people by district in November 2023



Disaster Impacts – November 2023

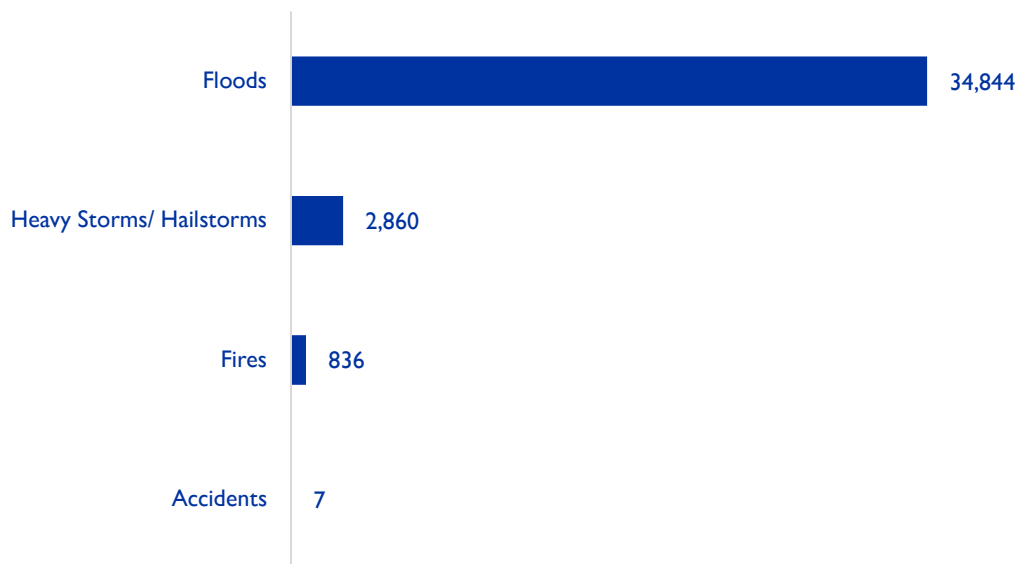


Partners

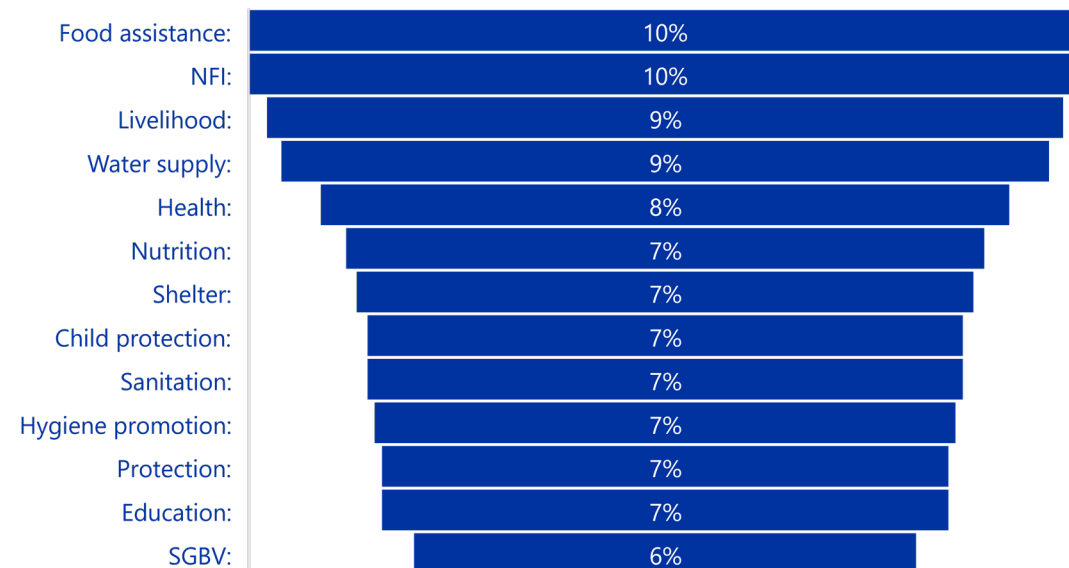




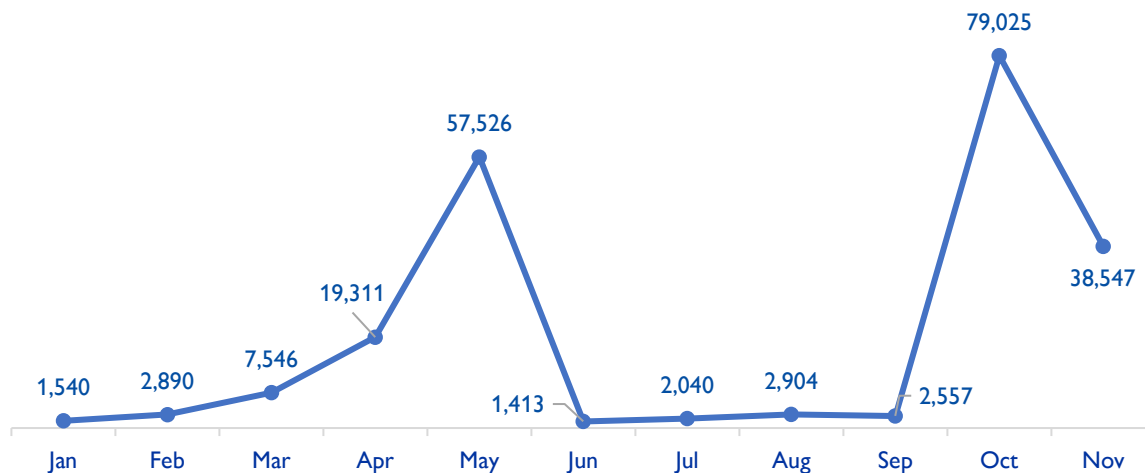
Number of affected people by disasters in November 2023



Priority needs assessment



2023 Monthly Impacts (affected) due to disasters



2023 Monthly Impacts (IDPs) due to disasters

