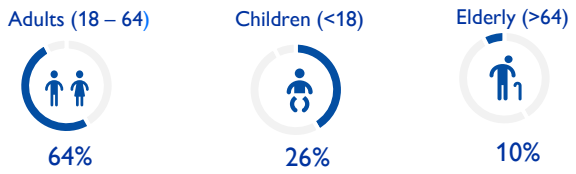
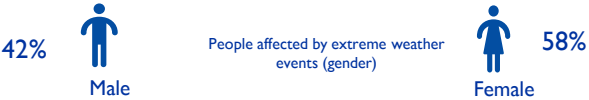




### Overview of Affected Population – September & October 2024

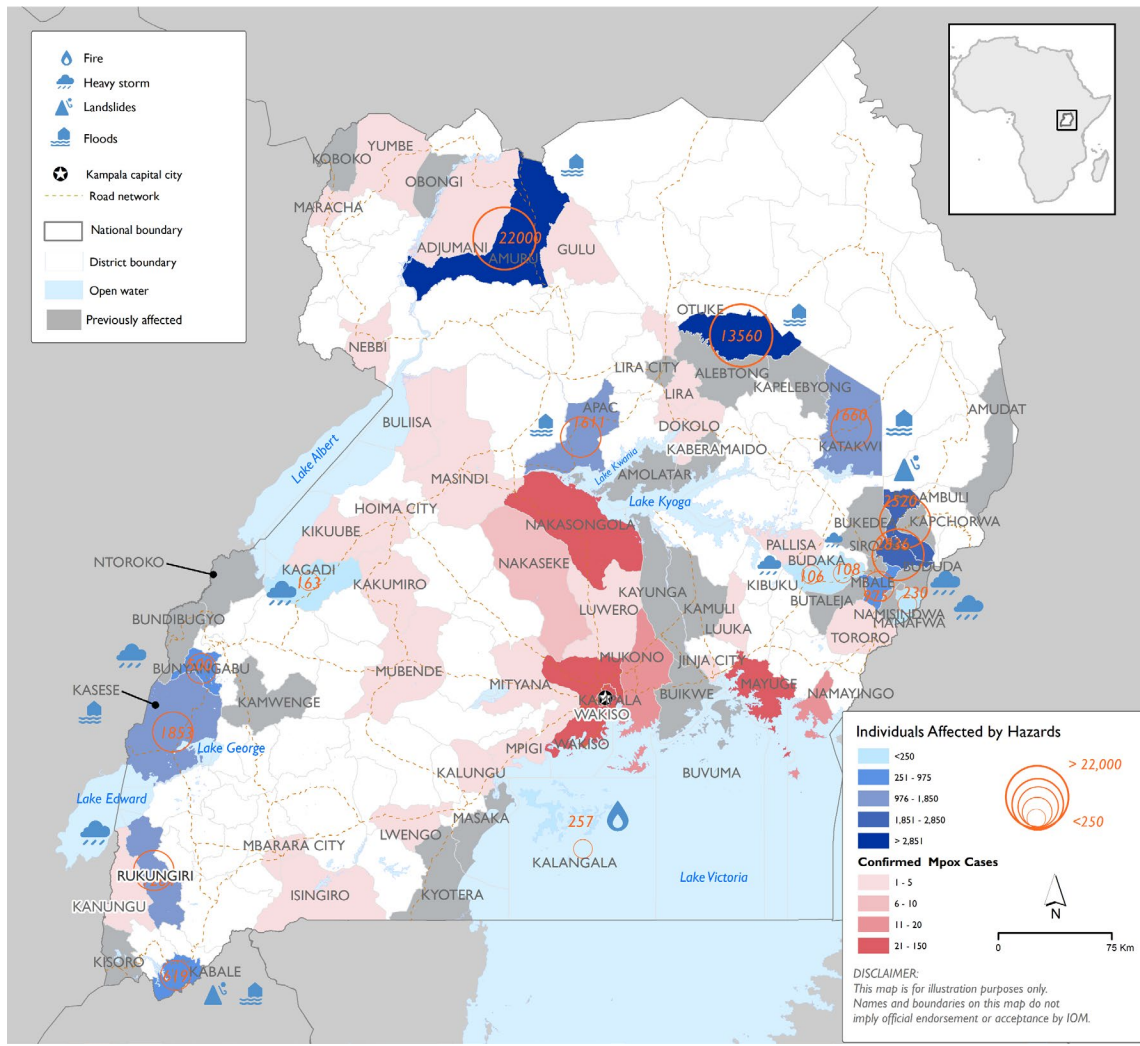


*Disclaimer: The percentages and figures presented are based on the disaggregated data provided.*

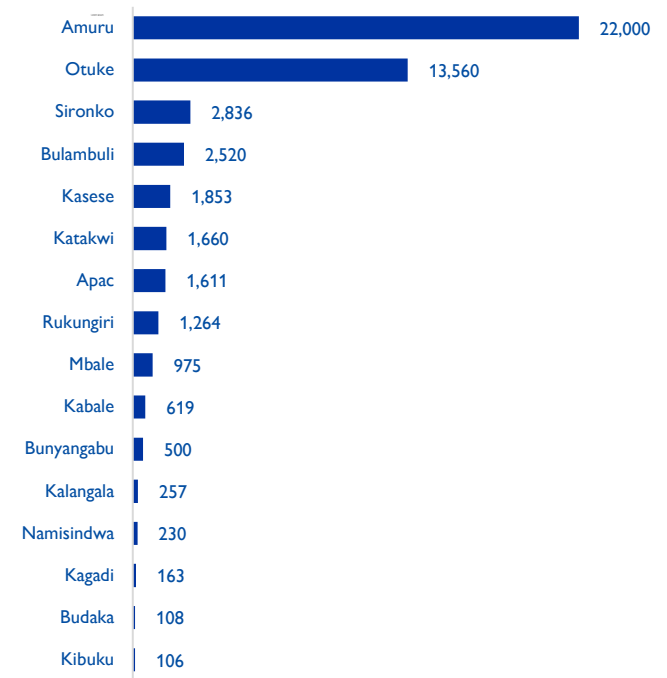
### Observations for September & October 2024

- As of November 10, 2024, the Ministry of Health reported 443 Mpox cases across 37 districts. Males accounted for 56% of cases, with females making up the remaining 44%. Additionally, September and October saw widespread extreme weather events, including floods, landslides, heavy storms, and fires.
- Hazards during the reporting period affected over 50,262 individuals (9,348 households), with 21,498 people from 3,965 households being internally displaced.
- The most affected age group were adults between 18 and 64 years (64%), followed by children below the age of 18 (26%) and elderly above 64 (10%). Notably, more than half of affected people were female (58%).
- As a consequence, urgent needs have emerged, with health, food assistance and NFIs as critical priorities in the aftermath of the reported hazards.
- Infrastructure damage was significant, with 4,990 houses partially destroyed, 926 houses completely destroyed, and 902 water facilities, 29 schools and 6 health facilities impacted.

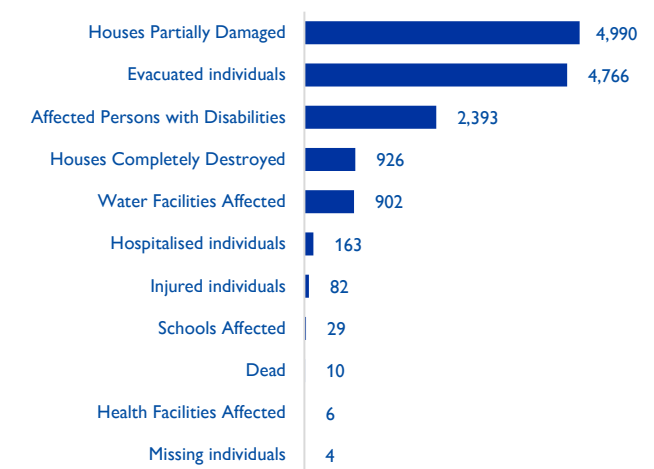
### Districts Affected in 2024



### Affected People by District in September & October 2024



### Hazard Impacts – September & October 2024



### Partners





### Priority Needs Assessment

District	Subcounty	Hygiene Promotion	Health	Water Supply	Sanitation	Shelter	Food Assistance	Nutrition	Education	NFIs	Protection	Child Protection	SGBV	Livelihoods
Amuru	Attiak	1	1	1	2	2	1	1	2	1	1	1	1	2
Apac	Ibuje	1	1	1	2	1	1	3	2	1	3	2	2	1
Budaka	Nansanga	5	2	4	4	4	4	4	4	4	4	4	4	4
	Lyama	5	5	5	1	1	2	5	5	2	5	5	5	2
Bulambuli	Namisuni	1	1	1	1	2	1	2	2	1	2	2	2	2
Bunyangabu	Rwimi	4	3	3	2	3	1	4	4	1	2	2	3	1
Kabale	Rubaya	1	1	1	1	1	1	2	2	3	1	1	4	3
	Kitumba	2	1	1	1	1	1	2	1	2	2	1	5	1
	Kamuganguzi	4	1	1	1	1	1	2	3	1	2	2	4	2
Kagadi	Ndaiga	5	3	4	4	3	5	1	2	5	1	1	5	3
Kalangala	Mazinga	4	1	2	1	1	1	1	1	1	3	1	2	1
	Kalangala Town Council	5	5	1	1	2	1	1	2	1	3	2	2	1
Kasese	Nyamwamba Division	3	1	1	1	2	1	4	2	1	2	1	4	2
Katakwi	Palam	1	2	2	1	1	2	2	2	1	2	2	2	1
	Ngariam	2	2	2	1	2	1	2	2	1	2	2	2	1
Kibuku	Kadama	4	4	4	2	4	2	4	4	3	4	5	5	2
Nyondo	Nyondo	3	1	1	1	3	1	1	3	1	3	3	1	1
	Bukiende	3	2	1	1	1	1	1	1	1	2	3	1	1
Namisindwa	Bumwoni	4	4	4	4	4	3	4	3	4	4	4	4	4
Otuke	Ogwette	1	1	1	1	1	1	1	2	1	1	1	3	1
Rukungiri	Buyanja	2	2	2	2	2	1	2	2	1	2	2	2	1
	Eastern Divison	2	2	3	3	2	1	1	3	1	3	4	4	4
Sironko	Bukiise	2	1	1	1	1	2	2	1	1	2	1	3	1

KEY	HIGH	MEDIUM	LOW	NOT	NONE
PRIORITY	1	2	3	4	5

### Methodology

The IOM DTM Emergency Event Tracking (EET) is a tool set up to quickly collect information on mobility due to a particular events to provide timely updates on displacement and/or migration between assessment rounds. Information is gathered following field visits and telephone interviews with key informants in affected areas, including displacement sites and host communities. This summary report presents the results of assessments on different types of hazards across districts in Uganda, carried out during September and October 2024, through field reports shared by partners and telephone calls with key informants in the District Disaster Management Committees (DDMCs) members in 16 districts in Uganda. Data was collected on the number and sex and age of people affected, including internally displaced persons (IDPs), the impacts of the hazards, and key observations.

Note that information is related to the specific climatic events and does not always provide an overview of all population movements within a location. Only information that can be gathered quickly is captured, thus it may be incomplete. Data collected through this method can be used to identify locations where specific assessments need to be conducted and/or where rapid assistance may be needed.

The following citation is required when using any data and information included in this report and information product: "International Organization for Migration (IOM), **November 2024. Uganda Multi-hazard EET. IOM Uganda**".

For more information on the terms and conditions of DTM reports and information products, please refer to <https://dtm.iom.int/terms-and-conditions>.

FOR MORE INFORMATION: Contact us on [dtmuganda@iom.int](mailto:dtmuganda@iom.int) and for more DTM Products visit: <https://dtm.iom.int/uganda>