

# UKRAINE INTERNAL DISPLACEMENT REPORT

## GENERAL POPULATION SURVEY

ROUND 14  
OCTOBER 2023

## TABLE OF CONTENTS

OVERVIEW OF POPULATION FIGURES	2
DEMOGRAPHICS	3
INTERNAL DISPLACEMENT FLOWS	4
DURATION OF DISPLACEMENT	6
PRIORITY NEEDS AND COPING STRATEGIES	7
WINTERIZATION	9
IMMEDIATE MOBILITY INTENTIONS	10
LONG-TERM INTENTIONS AND THE DURABLE SOLUTIONS PATHWAYS	12
THE IASC CRITERIA	14
HOUSING, LAND AND PROPERTY	16
HEALTH	16
PUBLIC AFFAIRS	17
BRIEF NOTE ON METHODOLOGY	18

Unless noted otherwise, data cited in this report were compiled from Round 14 of the General Population Survey, dated September 25, 2023. All numbers are rounded for ease of use. Data collection was facilitated by the Multicultural Insights research agency.

The full spectrum of results of Round 14 of IOM's General Population Survey is presented in three complementary products: the **Population Snapshot**, the **Ukraine Internal Displacement Report**, and the **Ukraine Returns Report**. IOM now also prepares **oblast-specific briefs for key oblasts of displacement and return** for use by local actors and oblast authorities. Additional analysis is available upon request to [dtmukraine@iom.int](mailto:dtmukraine@iom.int).

## KEY FINDINGS

As of 25 September 2023, IOM estimates that **3.7 million people are internally displaced within Ukraine**. Of the total, 52 per cent of all IDPs are concentrated in just five oblasts in Ukraine, with the largest estimated de-facto IDP presence in Dnipropetrovska and Kharkivska Oblasts (498,000 and 494,000 estimated IDPs, respectively). Almost half of the total IDP population originated from just two oblasts: Donetsk (24%) and Kharkivska (22%).

The **five oblasts hosting the largest numbers of IDPs are also the principal oblasts of return**.

**Seventy per cent of displaced households reported having been displaced for at least one year**, IDPs displaced for 422 days on average. As IDPs remain in displacement for longer periods of time, they may face compounded vulnerabilities borne out by the protracted nature of their displacement. Amplified fragilities in displacement may compel IDPs to return despite safety and security risks persisting in areas of return.

Compared to Round 13, latest data show **a notable reduction in the number of IDPs who report an immediate intention to relocate**, with a drop in displaced households intending to either return to their place of habitual residence or relocate to another location within one month from 15 per cent in R 13 to 6 per cent in R 14.

**Among IDPs considering relocation, 85 per cent were contemplating returning** to their pre-war habitual place of residence, with highest proportions currently residing in Chernihivska and Poltavaska Oblasts. Meanwhile, the highest shares of IDPs intending to integrate were in Kyivska (27%), Odeska (24%), Dnipropetrovska (21%) Oblasts.

Similar to previous rounds, cash remains the most pressing need reported by all population groups (50% for IDPs, 45% for returnees and 44% for non-IDPs). **The need for generators & power banks (10%) and fuel for heating (7%) ranked as the second and third most vital needs**. These needs appear to be linked to anticipated power outages following potential attacks on energy infrastructure.

IDPs in the South and East macro-regions were less likely to consider their homes adequate for the winter. Oblasts where IDPs were most likely to report their homes as unprepared are Khersonska (25%), Chernihivska (18%) and Odeska (18%). **Significant shares of IDPs (38%) and non-displaced persons (48%) considering relocation indicated that the upcoming winter was a significant factor in their wish to leave**. This may reflect a high vulnerability of IDP, returnee and non-displaced households who might not have the resources for neither repair nor relocation.

**Close to half (47%) of IDPs reported that their households owned a house/apartment that was damaged or destroyed by the war**, while among the resident population, 8 per cent stated damaged property ownership.

The opinions expressed in this publication are those of the authors and do not necessarily reflect the views of the International Organization for Migration (IOM). The designations employed and the presentation of material throughout the publication do not imply expression of any opinion whatsoever on the part of IOM concerning the legal status of any country, territory, city or area, or of its authorities, or concerning its frontiers or boundaries.

IOM is committed to the principle that humane and orderly migration benefits migrants and society. As an intergovernmental organization, IOM acts with its partners in the international community to: assist in meeting the operational challenges of migration; advance understanding of migration issues; encourage social and economic development through migration; and uphold the human dignity and well-being of migrants.

© 2023 International Organization for Migration (IOM) All rights reserved. When quoting, paraphrasing or in any way using the information mentioned in this report, the source needs to be stated appropriately as follows: "Source: International Organization for Migration (IOM), Ukraine Displacement Report, October 2023".

# OVERVIEW

Since the full-scale invasion of Ukraine by the Armed Forces of the Russian Federation, the International Organization for Migration (IOM) has been collecting data on internally displaced persons (IDPs), returnees, and the non-displaced population through a nationwide representative General Population Survey. Starting with Round 13, the survey was scaled up to provide reliable oblast-level data, with 20,000 randomized interviews conducted in each round, followed by 6,000 additional in-depth interviews with a representative sample of each population group. IOM is committed to utilizing the best population data available at the time of each

survey for extrapolation of population estimates. Since the start of the full-scale invasion, estimates of total population present in Ukraine have improved, impacting the comparability of population estimates between some rounds of IOM's survey. Round 14 population estimates are based on a new available UNFPA population baseline for Ukraine valid as of July 2023 (est. a total population of 33,000,000, excluding the Autonomous Republic of Crimea and Sevastopol), also utilized to underpin high level humanitarian coordination and planning by key UN actors and partners.

## DISPLACEMENT AND MOBILITY TRENDS

Map 1: Estimated IDPs presence by oblast of displacement

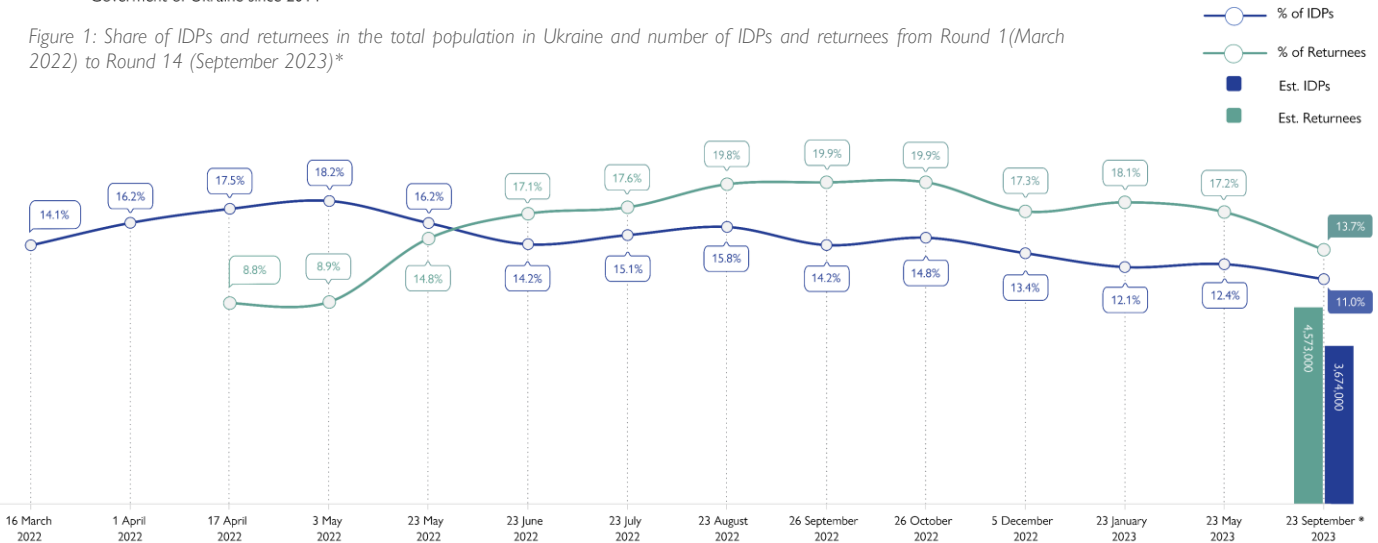


**3,674,000**  
EST. TOTAL IDPS



**4,573,000**  
EST. TOTAL RETURNEES

Figure 1: Share of IDPs and returnees in the total population in Ukraine and number of IDPs and returnees from Round 1 (March 2022) to Round 14 (September 2023)\*



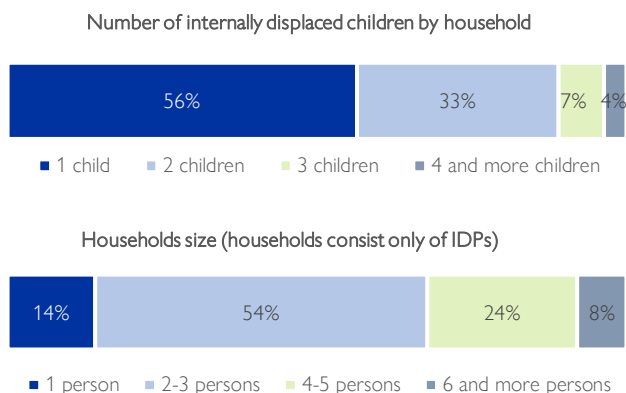
\* Trends unaffected by the extrapolation are shown by the line chart and expressed in % of the total population in Ukraine. Estimated figures have been rounded to the nearest 1,000. Percentages in graphs have been rounded for visualization purposes. Decreases in the shares of displaced persons and returnees as a proportion of the total resident population in Ukraine observed from September 2022 may be explained by changes in the population baseline; changes in phone network coverage and connectivity; and seasonal and other factors generating large movements of populations.

## DEMOGRAPHICS

Following Round 13 of the General Population Survey IOM, in cooperation with the UN Population Fund (UNFPA) revised the questions identifying the characteristics of IDP households, with the goal of gaining more accurate sex and age disaggregation of affected household members. This enabled the production of an estimated demographic breakdown of the displaced population, including enhanced insights into the prevalence of vulnerabilities and composition of households.

### HOUSEHOLD COMPOSITION

Figure 2: Number of displaced children in affected households and number of people in households consisting only of IDPs



Eighty-one percent (81%) of IDPs interviewed resided in households comprised solely of internally displaced persons, while 19 per cent confirmed living in mixed households with individuals who were not displaced by the war which started on 24 February 2022.

- 3.03** average IDP household size (IDP-only households) as of September 2023
- 1.60** average number of children per IDP-only household as of September 2023
- 81%** households consisting exclusively of IDPs as of September 2023
- 53%** households have at least one vulnerable member (people with disabilities or chronically ill) as of September 2023

N.B. Households with IDPs only

Figure 3: Share of IDPs by settlement type

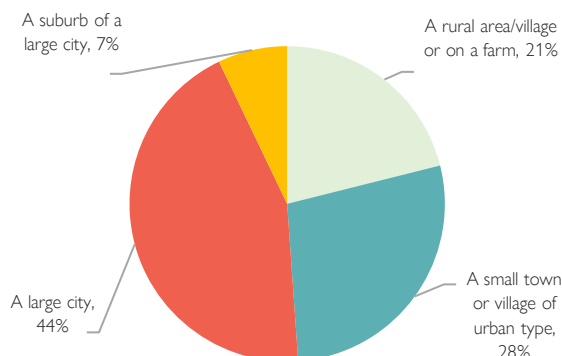


Table 1: Share of IDPs by sex and age group

Estimated group size	Female	Male	Total
Infants	0.4%	0.4%	0.4%
1-4 years old	3.1%	5.6%	4.1%
5-9 years old	7.3%	9.0%	8.0%
10-17 years old	9.7%	14.9%	11.9%
Adults 18-29	10.2%	12.4%	11.1%
Adults 30-39	17.3%	14.4%	16.1%
Adults 40-49	14.7%	12.2%	13.6%
Adults 50-59	11.6%	10.7%	11.3%
Elderly (60+)	25.7%	20.4%	23.5%
<b>Total</b>	<b>57.3%</b>	<b>42.7%</b>	<b>100.0%</b>

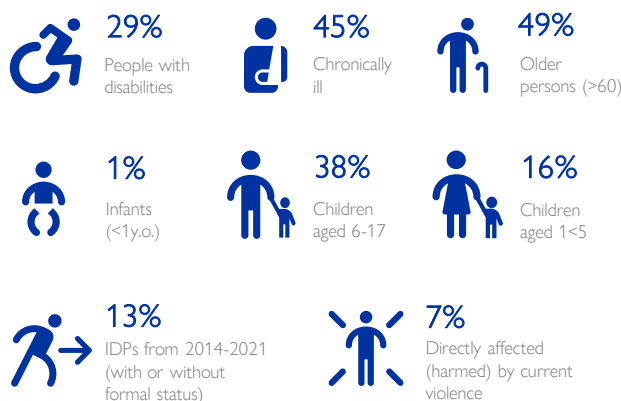
Table 2: Max. estimate of IDPs by sex and age group\*

Estimated group size	Female	Male	Total
Infants	7,000	5,000	12,000
1-4 years old	52,000	71,000	123,000
5-9 years old	125,000	114,000	239,000
10-17 years old	165,000	189,000	354,000
Adults 18-29	174,000	157,000	331,000
Adults 30-39	295,000	183,000	478,000
Adults 40-49	250,000	154,000	404,000
Adults 50-59	199,000	136,000	335,000
Elderly (60+)	439,000	260,000	699,000
<b>Total</b>	<b>1,706,000</b>	<b>1,269,000</b>	<b>2,975,000*</b>

\* Figures relating to the sex and age disaggregation of members of displaced households are based solely on data for those household members who do not live in their primary residence because of the war (representing 81% of all IDP households).

### HOUSEHOLD VULNERABILITIES

The share of IDPs who report one or more of their current household members fall within one of the following vulnerability categories (read as: "38% of IDP respondents indicate that at least one member of the family currently with them is a child between ages of 5 and 17"):



N.B.: The description of the characteristics of IDP household members is based solely on the data for those household members who do not live in their place of habitual residence due to the war.

## INTERNAL DISPLACEMENT FLOWS

### CURRENT LOCATION & ORIGIN

Table 3: Share of IDPs originating from the top 5 oblasts of origin of IDPs

Oblast	% of total IDPs
Donetska Oblast	24%
Kharkivska Oblast	22%
Zaporizka Oblast	11%
Khersonska Oblast	11%
Luhanska Oblast	8%
Other oblasts	24%

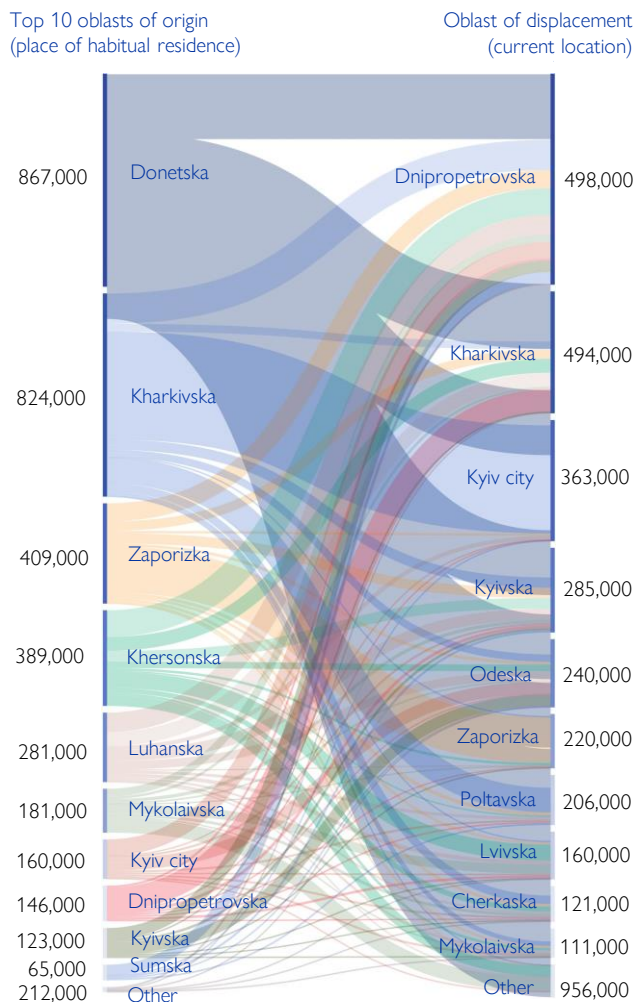
Table 4: Share of IDPs living in the top 5 IDP hosting oblasts

Oblast	% of total IDPs
Dnipropetrovska Oblast	14%
Kharkivska Oblast	13%
Kyiv City	10%
Kyivska Oblast	8%
Odeska Oblast	7%
Other oblasts	48%

Almost half of the total IDP population identified in R14, equivalent to 1,691,000 people, originated from two oblasts: Donetska (24%) and Kharkivska (22%). Donetska Oblast is the main oblast of origin for IDPs, with resulting displacement spreading across several other oblasts. Conversely, the primary oblast of displacement is Dnipropetrovska Oblast – it hosts 14 per cent of estimated IDPs – where IDPs have fled to from various oblasts, particularly neighbouring ones. Kyiv city and Kyivska Oblast also host a substantial number of IDPs, in line with trends observed in previous rounds. This phenomenon can likely be attributed to the perceived improved security conditions and availability of work opportunities in these areas. Lastly, it is worth noting that the top five oblasts hosting IDPs are the same ones with the highest percentage of returnees among R14.

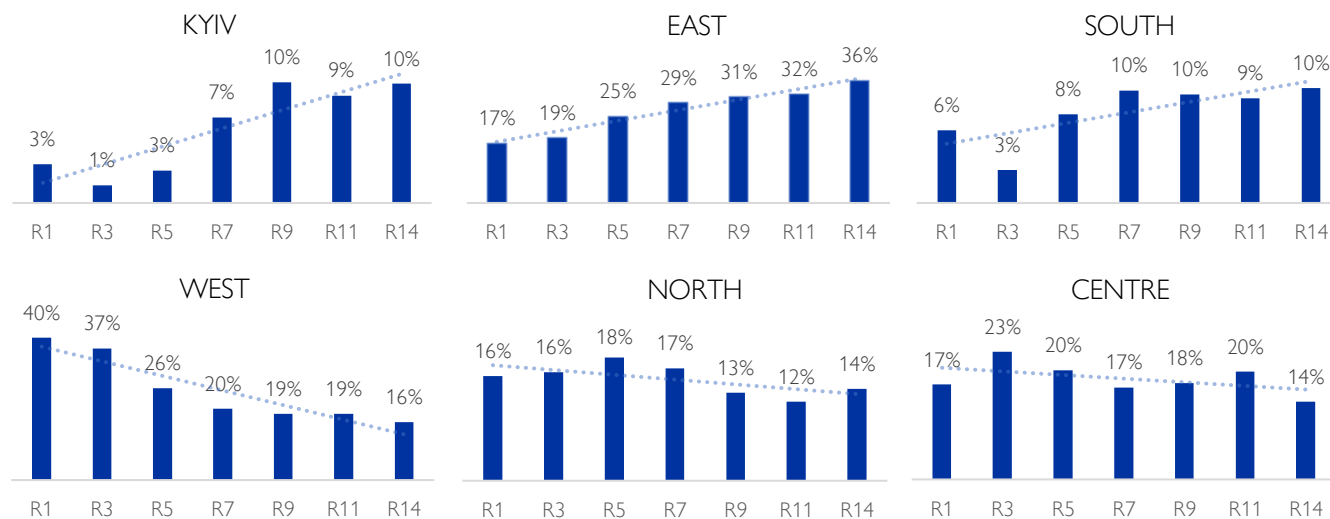
*N.B. IDP respondents are identified by a) de facto not being present in their area of habitual residence, and b) indicating that the escalation of the war in February 2022 was their reason for going or staying in displacement.*

Figure 4: Flow between top 10 oblasts of displacement and oblasts of origin



*N.B. Estimates of the number of displaced people do not take into account those who did not provide information on current location and place of origin (0.5% respondents for current location and 0.5% for place of origin)*

Figure 5: Shares of IDPs by macro-region of displacement from Round 1 (April 2022) to Round 14 (September 2023)\*



\* Estimates of the number of displaced people at the macro-regional level do not include data from respondents who did not provide location information.

## INTERNAL DISPLACEMENT FLOWS

### MACRO-REGIONS OF ORIGIN OF IDPs

Where do those currently displaced by war come from?

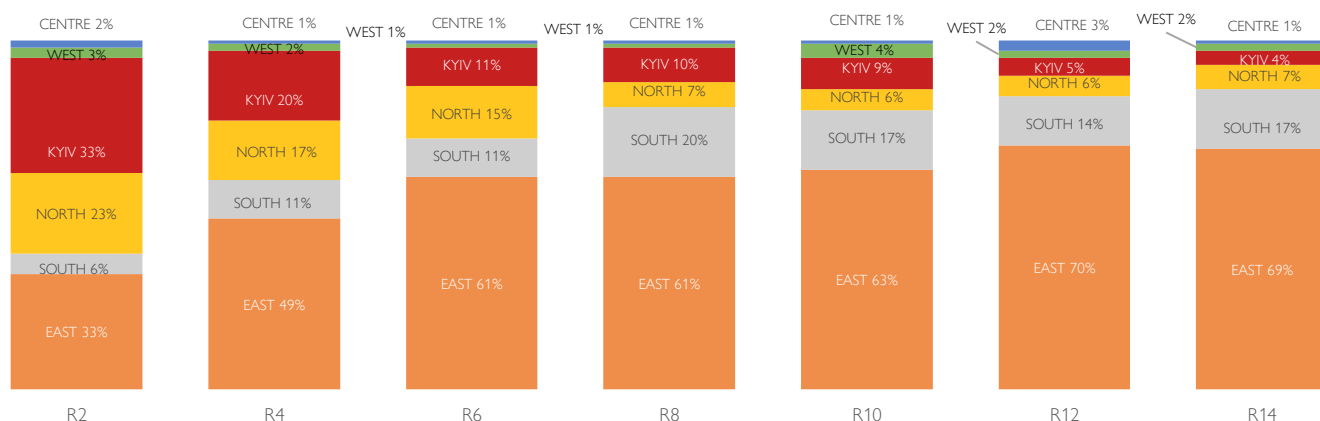
The majority of IDPs continue to originate from oblasts in the East of Ukraine (69%, equ. 2,246,000). Less than one in five IDPs originate from oblasts in the South of Ukraine (17%, equivalent to 612,000 people). IDPs originating from Kyiv and the North of Ukraine make up a combined 11 per cent, with Kyiv having recorded the largest percentage decrease since the General Population Survey began, from 33 per cent in Round 2 (April 2022) to four per cent in Round 14.

Table 5: Share and absolute number of IDPs by macro-region of origin

Macro-region	% of IDPs origin	# est. IDPs per macro-region of origin
EAST	69%	2,246,000
SOUTH	17%	612,000
NORTH	7%	255,000
KYIV	4%	160,000
WEST	2%	50,000
CENTRE	1%	43,000
<b>Total est. displaced within Ukraine</b>		<b>3,674,000*</b>

N.B. Estimates of the number of displaced people do not reflect those who did not provide current and origin location information (0.5% - current location and 0.5% - place of origin).

Figure 6: Share of IDPs by macro-region of origin, from Round 2 (April 2022) to Round 14 (September 2023)



### MACRO-REGIONS OF CURRENT LOCATION OF IDPs

Where are those displaced by the war currently located?

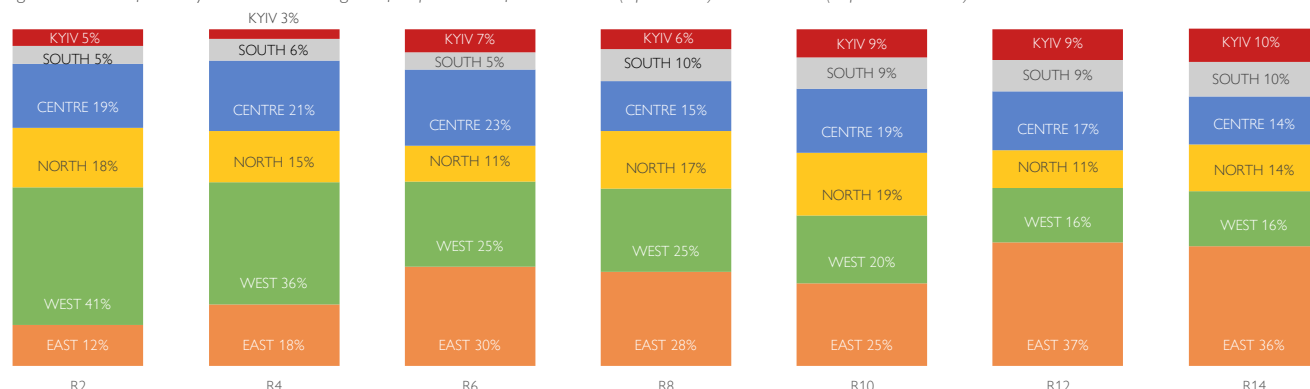
Slightly over one-third (36%) of all IDPs in Ukraine are currently situated in the Eastern oblasts, (est. 1,300,000 individuals). Over time, Kyiv city has also seen a steady increase in the proportion of Ukraine's IDPs hosted in the city, from around three per cent in Round 4 (May 2022), to around 10 per cent in Round 14. In contrast, the Southern and Central oblasts have remained consistent compared to Round 13. However, the Western and Northern oblasts have observed a slight decline in IDP population, with the Western regions decreasing from an estimated 36 per cent in Round 4 (May 2022) to around 16 per cent in Round 14.

Table 6: Share and absolute number of IDPs by current macro-region of displacement

Macro-region	% of IDPs location	# est. IDPs per host macro-region
EAST	36%	1,300,000
WEST	16%	594,000
NORTH	14%	503,000
CENTRE	14%	521,000
KYIV	10%	363,000
SOUTH	10%	374,000
<b>Total est. displaced within Ukraine</b>		<b>3,674,000*</b>

N.B. Estimates of the number of displaced people do not reflect those who did not provide current and origin location information (0.5% - current location and 0.5% - place of origin).

Figure 7: Share of IDPs by current macro-region of displacement from Round 2 (April 2022) to Round 14 (September 2023)



## INTERNAL DISPLACEMENT FLOWS

### RETURNS FROM ABROAD INTO DISPLACEMENT WITHIN UKRAINE

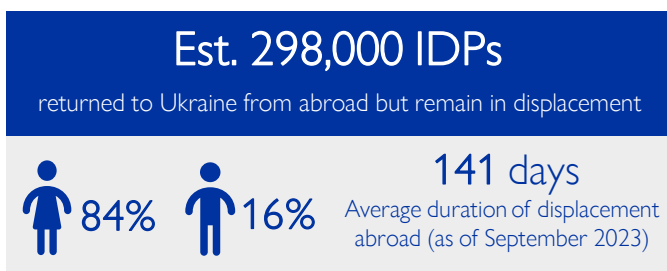
The General Population Survey has served as a key source of return statistics, delivering highly representative estimates of returnee figures since April 2022. To date, no estimates exist indicating the number of people in Ukraine who remain internally displaced after returning from abroad.

Starting from Round 13 of the General Population Survey IOM introduced a new set of questions to estimate the number of those who returned to Ukraine from outside of the country, but who remain internally displaced. Please see the separate Returns report to review the analysis of data collected through the General Population Survey Round 14 among individuals who have returned to their habitual place of residence.

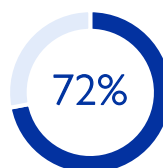
The survey results indicate that **8 per cent of IDPs in Ukraine returned from abroad but remain in displacement**, which equates to an estimated 298,000 people. Around half of those who returned from abroad but remain displaced inside Ukraine were in another country for less than three months. Those IDPs who returned from abroad and are currently in the west of Ukraine had the longest average duration of displacement, around five months (158 days).

The majority of IDPs in this group originate from oblasts that are currently under partial temporary military occupation by the Russian Federation. While some have relocated to areas near the frontline (e.g., 18% in Kharkivska Oblast), others are dispersed throughout the country.

Figure 8: Number and sex breakdown of IDPs who returned to Ukraine from abroad but not to their places of habitual residence



Thirty-nine (39%) per cent of those IDPs who returned from abroad self-reported that their households owned a house/apartment that was damaged or destroyed by the war. Most of them were compelled to live in rented dwellings (55%) or in a friend's or family member's homes (31%).



of IDPs who have returned from abroad to Ukraine reported having spent all their savings or reported not having had savings before being displaced.

Table 7: Top 5 oblasts of origin of IDPs who returned to Ukraine but not to their places of habitual residence

Oblast	%
Kharkivska Oblast	18%
Donetska Oblast	16%
Khersonska Oblast	15%
Zaporizka Oblast	12%
Kyiv city	8%
Other oblasts	31%

Table 8: Top 5 IDP-hosting oblasts of IDPs who returned to Ukraine but not to their places of habitual residence

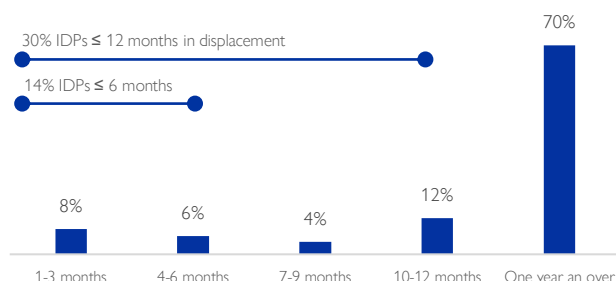
Oblast	%
Kharkivska Oblast	11%
Dnipropetrovska Oblast	9%
Odeska Oblast	9%
Kyiv city	8%
Lvivska Oblast	7%
Other oblasts	56%

## DURATION OF DISPLACEMENT

**422 days** average duration of displacement among IDPs in Ukraine (as of September 2023)

In Round 14, 70 per cent of IDPs reported having been displaced for one year or longer. Of the remaining share, 8 per cent reported having been displaced more than 90 days.

Figure 9: Share of IDPs by duration of displacement



In all, 30 per cent of interviewed IDPs had been displaced for less than a year at the time of the survey, while 14 per cent had been displaced for six months or less, including 8 per cent within three months of the survey date. This reflects the continuous nature of displacement of people throughout Ukraine, a year and a half after the start of the full-scale invasion.

The fact that a significant proportion of surveyed IDPs have been displaced for over a year reflects the protracted nature of displacement in Ukraine. As a result, long-term IDPs may face compounded vulnerabilities, emphasizing the growing necessity to develop durable solutions to forced displacement in the country. Amplified fragilities of protracted displacement may compel IDPs to return despite safety and security in areas of return.

IDPs currently displaced in Volynska, Chernivetska, and Kirovohradska Oblasts reported a higher average length of displacement compared to IDPs residing in other oblasts – IDPs residing in these oblasts have been displaced for over 450 days.

Kharkivska (354,000), Dnipropetrovska (384,000), Kyiv city (272,000), Kyivska (195,000) and Poltavska (175,000) Oblasts, all located in East or North macroregions, hold the largest absolute numbers of IDPs who were displaced for over a year.

## PRIORITY NEEDS OF IDPs AND COPING STRATEGIES

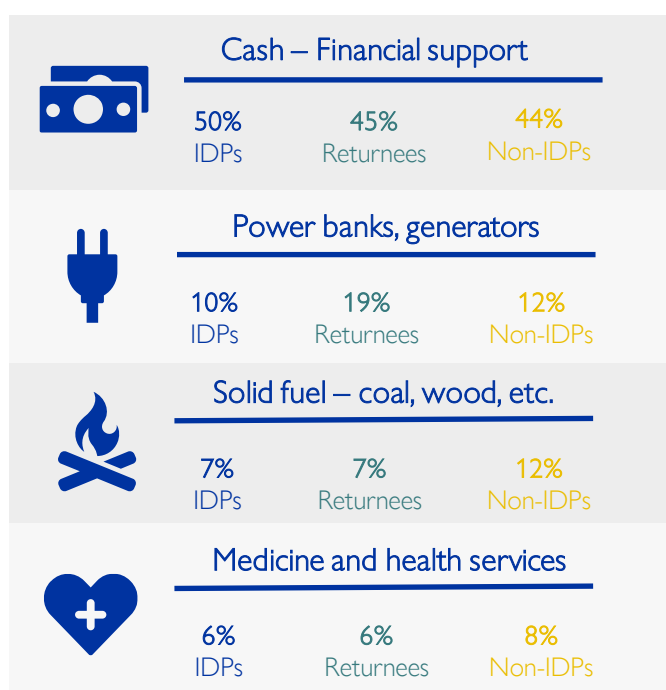
### MOST PRESSING NEED

As in previous rounds, cash (direct financial assistance) remains the most pressing need reported by displaced (50% of IDP respondents), returnee (45%) and non-displaced (44%) populations alike. As temperatures drop and ahead of the winter season, generators and power banks (10%) as well as fuel for heating (7%) were the second- and third-most urgent needs mentioned by IDP respondents, followed by medical and health services (6%).

Cash, generators and heating fuel were the most urgent needs of displaced persons across Ukraine.

Notably, 7 per cent of returnees and 6 per cent of non-displaced persons cited building materials as their most pressing need – compared to 2 per cent of displaced interviewees.

Figure 10: Most pressing needs of affected populations, by respondent profile



Differences in the most pressing needs can be observed between the types of locations in which affected populations reside. Thus, while financial support remained the top need for all settlement types, displaced and non-displaced people residing in rural areas and villages expressed greater needs for solid fuel (17% of IDPs living rural areas), while greater shares of respondents in large cities and their suburbs reported urgent need for power banks, generators and accumulators (11% of IDPs living in cities and their suburbs).

Similarly, returnees residing in rural areas (9%) and small towns (9%) expressed a greater want of building material than those interviewed in cities (5%). Meanwhile, greater shares of IDP respondents chose clothing, blankets and other non-food items as well as accommodation as their most pressing need in towns and cities than in rural areas (5%).

### PRIORITY NEEDS

IDPs systematically displayed higher needs for basic goods than returnees and non-displaced populations, with the exception of repair and construction material which returnees (27%) and non-displaced persons (26%) reported greater needs for; and solid fuel for heating which, interestingly, a higher share of non-displaced respondents (25%) reported being in need of. As in previous rounds, cash and financial assistance (74%) were the most significant needs of IDPs, while power banks, generators and accumulators (57%) and clothes and blankets (46%) were the next most-reported needs, possibly reflecting anticipated power cuts following attacks on critical infrastructure. Surprisingly, given the approach of the cold months, only 36 per cent of IDPs reported a need for heating appliances.

IDPs in Kyiv city consistently had the smallest share of respondents reporting a lack of basic non-food items, while the largest proportions of respondents requiring items were interviewed in East or South macro-regions.

Table 9: Share of respondents reporting a lack in basic goods, by respondent profile

	IDPs	Returnees	Non-displaced
Cash - financial support	74%	58%	59%
Power banks, generators	57%	49%	34%
Clothes, blankets, and other NFI	46%	24%	18%
Medicines and health services	39%	13%	27%
Heating appliances	36%	24%	17%
Hygiene items	32%	13%	10%
Food	27%	15%	14%
Solid fuel for heating	23%	19%	25%
Repair materials	20%	27%	26%
Accommodation	18%	7%	4%
Access to money	10%	6%	7%

The lack of medicine and health services as well as hygiene items, noted by 39 per cent and 32 per cent of displaced interviewees respectively, has been growing (see the chart on the next page) and seems to point to a greater difficulty IDPs have accessing medication and health-related services.

Confirming a trend observed in previous rounds, female respondents, from all three groups assessed, consistently reported greater need for goods than male respondents, with the exception of accommodation.

### FINANCIAL SITUATION

Less than half of IDP respondents (48%) indicated that their income allowed them to cover their household needs, compared to 65 per cent of returnees and 64 per cent of non-displaced respondents. Amongst all three population categories, male respondents were more likely than female respondents to report sufficient savings, by up to ten percentage points.

Similarly, a significantly larger proportion of IDPs (56%) reported that their household had exhausted their entire savings than returnees (44%) and the non-IDP population (34%). Oblasts where the largest proportions of IDPs had no more savings included Rivneska, Donetsk, Volynska and Khersonska.



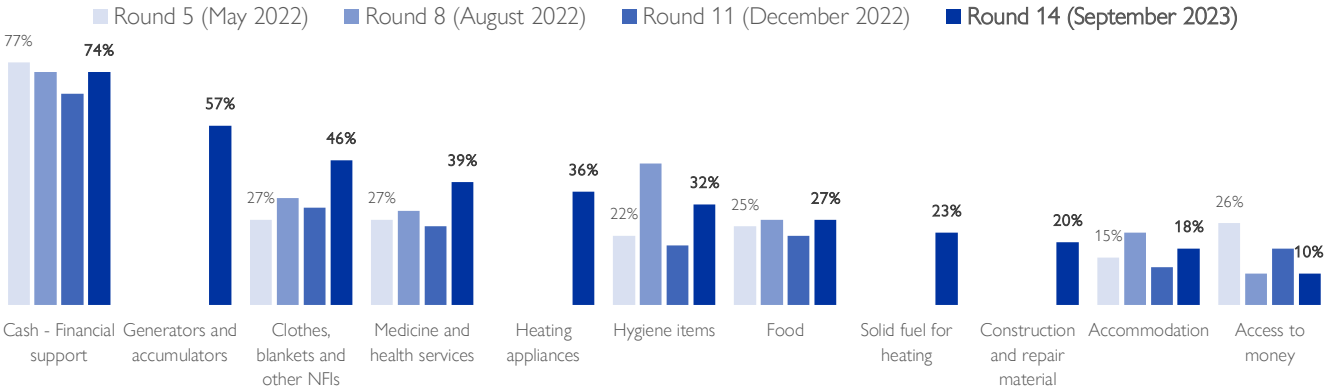
## PRIMARY NEEDS OF IDPs AND COPING STRATEGIES

### CHANGE IN NEEDS OVER TIME

As displacement becomes increasingly protracted, IDP needs for basic goods are following two divergent trends. While the share of respondents reporting lacking food has progressively decreased since the beginning of the year (from 32% in January 2023 to 27% in August 2023) and access to money (availability of financial services and functional ATMs) becomes gradually easier, the share of respondents requiring hygiene items and accommodation

has been growing (with some fluctuation) over the twelve months preceding Round 14 – from 13 per cent of IDPs in July 2023 to 18 per cent in August 2023 for accommodation and from 20 per cent to 32 per cent for hygiene items. Unsurprisingly, the need for generators, clothes and blankets seems to follow a seasonal cycle, with needs growing during the winter and falling in the warmer months.

Figure 11: Change in the share of IDPs reporting a lack of basic goods, from Round 5 (May 2022) to Round 14 (September 2023)



### COPING MECHANISMS

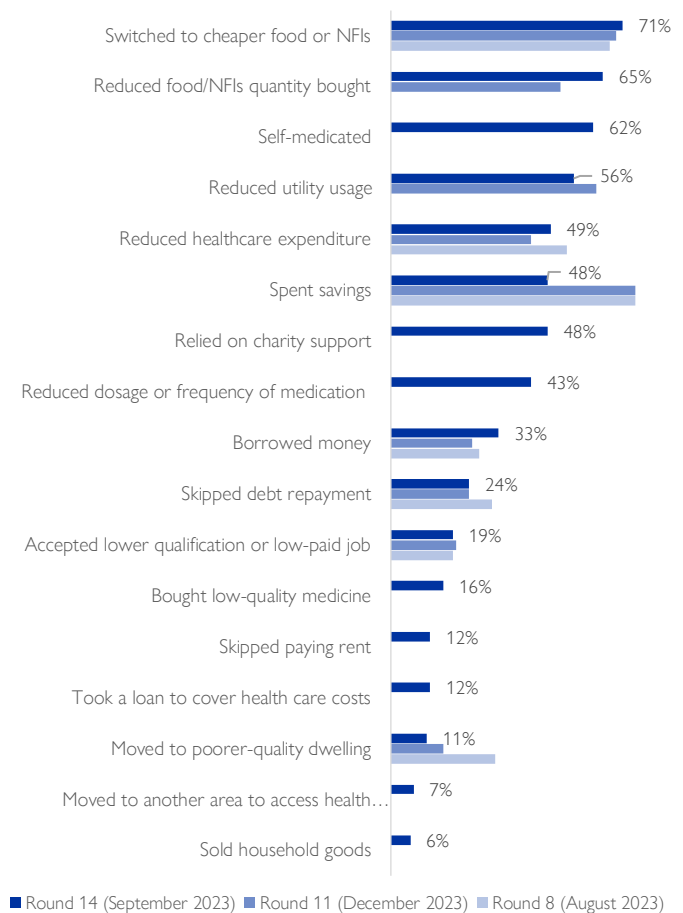
The General Population Survey systematically monitors the coping mechanisms adopted by IDPs or their family members in the 30 days preceding the survey to fulfill their basic household needs, as these actions have the potential to exacerbate vulnerabilities among those already at risk to shocks.

In this round, fewer respondents reported having had to spend their savings (48%, compared to 67% in June 2023 and 75% in December 2022). Nevertheless, significant shares of IDP respondents reported having had to reduce the costs of food and non-food items (71%) – most acutely in Dnipropetrovska, Volynska, Kirovohradska and Odeska Oblasts; to reduce the quantity of food purchased (65%) – most prominently in Volynska, Donetsk, Zakarpatska and Rivnenska Oblasts; and to forgo seeking medical care (62%) or reduce healthcare spending (49%). The shares of displaced households compelled to adopt these four practices have remained broadly constant over the past 12 months.

Ahead of winter, 56 per cent of IDP respondents indicated having had to reduce utility usage – notably in Rivnenska, Kharkivska, and Donetsk Oblasts - potentially signifying that displaced households may be driven to reduce usage of electricity, heating or warm water at a time when they will be most needed.

Many coping strategies were employed by female and male respondents in comparable proportions, while significant distinctions were evident in the utilization of other coping mechanisms. This was the case for reducing the quantity of food purchased, reported by 71 per cent of female IDPs and 56 per cent of male IDPs; accepting lower paid employment, noted by 16 per cent of female IDPs and 25 per cent of male IDPs; and spending savings, selected by 45 per cent of female IDP and 53 per cent of male IDP.

Figure 12: Share of IDPs who reported adopting coping mechanisms in the 30 days preceding the survey, from Round 8 (August 2022) to Round 14 (September 2023), by coping mechanism



## SECTOR SPOTLIGHT: WINTERISATION

With the winter season approaching, the needs of affected populations will shift. Heating, home insulation and availability of solid fuel will come into greater focus as the cold weather takes hold. Round 14 of the General Population Survey added multiple indicators to better capture needs for the winter. The below section details key winterization findings derived from these indicators' results.

### WINTER PREPAREDNESS AND RELOCATION

The vast majority of IDPs (86%) indicated that their home was adequately set up for winter (compared to 95% amongst non-displaced respondents), a result which confirms the trend, identified the previous winter, that an increasingly greater share of displaced people perceive their homes as being well prepared to face winter. In particular, IDPs in the North and West macro-regions reported housing as being relatively less adequate when compared to non-displaced respondents.

Unsurprisingly, displaced persons living in rural areas were less likely to reside in housing well-prepared for winter (80%) than those living in large cities (90%). It may however be noted that non-displaced residents living in rural areas, in contrast to IDPs, overwhelmingly considered their home to be prepared for winter (95%).

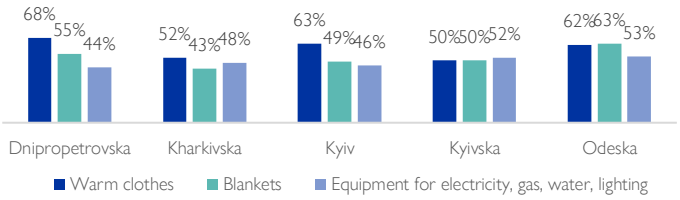
Among displaced and non-displaced populations alike, homes located in South and East macro-regions were less likely to be reported as being adequate for winter relative to other macro-regions. The oblasts where respondents were most likely to report their lodging as inadequately prepared for winter were Khersonska (25%), Chernihivska (18%) and Odeska (18%).

Furthermore, the winter season remains a concern to all three surveyed populations, as a significant share of IDPs (38%) and non-displaced persons (48%) considering relocation indicated that the upcoming winter was a significant factor for them wishing to leave. This was the case for two-thirds of IDPs in Odeska Oblast, half of IDPs in Kharkivska Oblast, a third of IDPs in Kyiv city and a quarter of IDPs in Dnipropetrovska Oblast.

Asked about the remaining needs to prepare their household for winter, IDP respondents noted that improvements or repairs would be needed to ensure preparedness for winter, in particular by having windows installed (51%) and additional walls built (40%).

In addition, internally displaced persons reported primarily needing warm clothes (59% of IDPs surveyed), blankets (49%) and heating, lighting and water equipment and supply (48%) to improve their family's resilience during the winter months. It is worth noting that displaced populations systematically faced higher needs than non-displaced populations, with the exception of construction material.

Figure 13: Top three needs of IDPs for the winter in the five oblasts hosting the largest numbers of IDPs, by share of IDPs reporting the need in each oblast



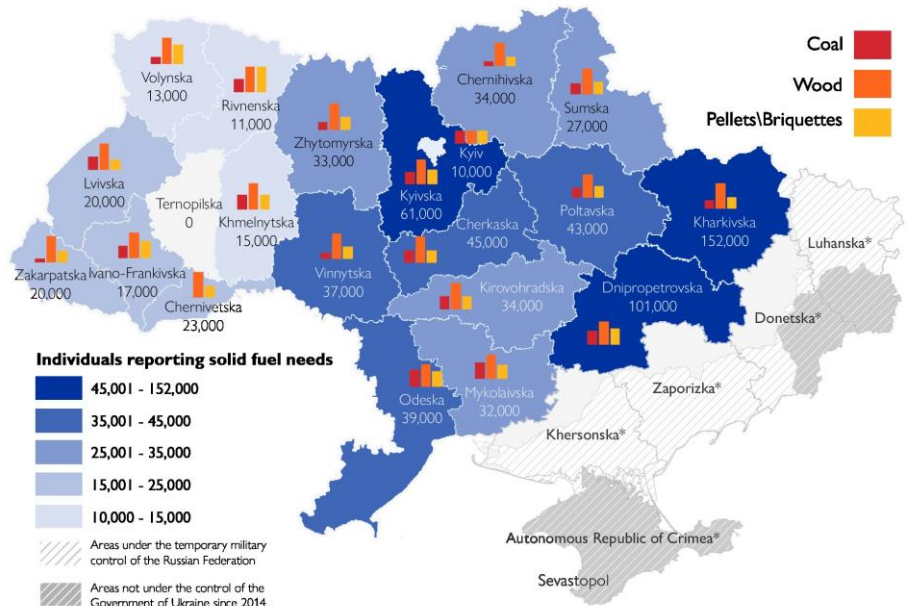
### HEATING FUEL

Amongst respondents who reported lacking solid fuel for heating (23% of IDPs, 19% of returnees and 25% of non-displaced), almost all IDP (96%), returnee (95%) and non-displaced (94%) respondents specified using wood to heat their home. Pellets or briquettes (mentioned by 52% of IDPs, 53% of returnees and 50% of non-IDPs) are another notable heating sources, while coal is used by a relatively smaller share of respondents requiring heating fuel.

The fuel used by displaced, returnee and non-displaced households to heat their homes varied from one macro-region to the next. Only 9 per cent of respondents living in Kyiv city, for instance, used coal as heating fuel, compared to 71 per cent of respondents in South macro-region. Homes in South (59%) and East (58%) macro-regions were more likely to be heated through pellets and briquettes.

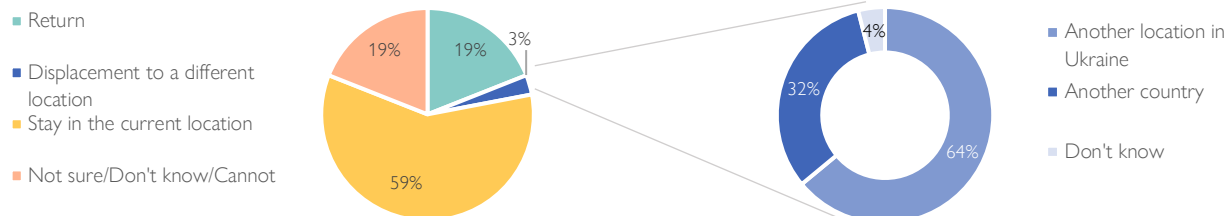
The oblasts where the largest number of IDPs reported lacking solid fuel for heating were Kharkivska (152,000), Dnipropetrovska (101,000) and Kyivska Oblasts (61,000). Yet close to three-quarters (72%) of IDPs reported not having enough funds to cover fuel costs throughout winter. Chernivetska (89%), Dnipropetrovska (85%), Donetsk (84%) and Odeska (80%) hosted the largest shares of IDPs without enough savings to pay for fuel. Although slightly lower, the share of non-displaced respondents who could not afford fuel for winter is also significant (66%).

Map 2: Number of IDPs reporting solid fuel needs for heating and main solid fuels needed, by oblast



## IMMEDIATE MOBILITY INTENTIONS

Figure 14: Mobility intentions of IDPs and intended destination among IDPs considering relocation, but not to their habitual place of residence



## RETURN INTENTIONS OF IDPs

In Round 14, 22 per cent of the estimated displaced population reported that they are considering leaving their current location (est. 824,000 individuals), including 19 per cent (eq. to 701,000 individuals) who sought to return to their place of habitual residence before the war. They represent 85 per cent of IDPs who planned to leave their current location. IDPs originating from Donetsk, Zaporizhka, Mykolayivska, Kharkivska, Khersonska Oblasts, and Kyiv City were the most inclined to contemplate returning to their habitual place of residence. Among oblasts hosting the largest numbers of IDPs, the plan to return in the short-term was most prominent among IDPs residing in Kyivska Oblast (20%), followed by Dnipropetrovska (16%) and Kharkivska and Kyiv City (both 15%).

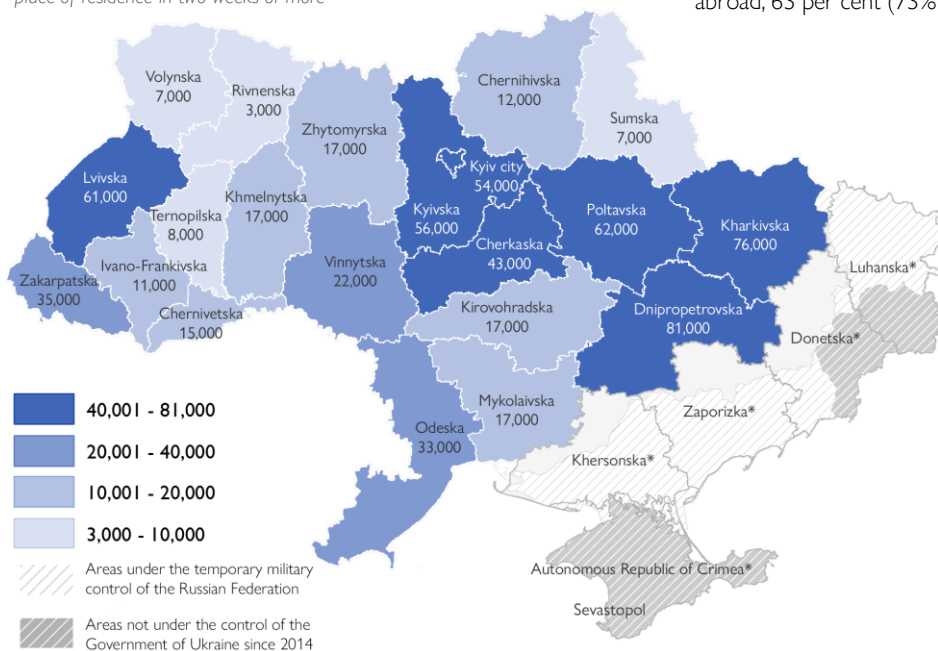
An estimated 52,000 individuals were planning to return to their place of origin within one month of the time of the interview.

## DISPLACEMENT TO A DIFFERENT LOCATION

Of the IDPs considering displacement from their current location but not return (11% of those intending to relocate, eq. 123,000), 64 per cent considered the possibility of being displaced to a different location in Ukraine while 32 per cent planned for relocation abroad.

Among this subset of IDPs, compared to Round 13, there is a

Map 3: Estimated number of IDPs reported intention to return to their habitual place of residence in two weeks or more



N.B. Estimates in Donetsk, Zaporizka, Luhanska, and Khersonska Oblasts are likely under-represented due to limited coverage of government-controlled areas only, as well as the limited number of respondents reached through the random digit dial.

decrease in the share of respondents who might experience re-displacement elsewhere in Ukraine (-10%) and increase in those intending to be relocated abroad (+9%).

The possibility of being displaced to a different location rather than returning home was particularly prominently envisaged amongst IDPs originally from Luhanska (45% of IDPs from that oblast who planned to leave their place of displacement reported the possibility of being displaced to a different location), Odeska (42%), Chernihivska (22%), and Dnipropetrovska (18%).

**(RE-)DISPLACEMENT WITHIN UKRAINE** Within Ukraine, the top five destination oblasts indicated were Kyiv city and Kyivska (12% each), followed by Kharkivska, Lvivska, Dnipropetrovska and Donetsk Oblasts. Eighteen per cent of those considering the possibility of being re-displaced from their current location did not know yet where they would go, depending on the situation. Among non-displaced Ukrainians, the share of people considering displacement to another place in Ukraine was 57 per cent while 38 per cent were considering relocation abroad. This is a significant drop compared to Round 12 (January 2023) and 13 (June 2023), where respectively 51 per cent and 52 per cent of the non-displaced population considering relocation, but not return, had reported the intent to relocate abroad.

**RELOCATION ABROAD** Among those IDPs considering relocation abroad, 63 per cent (73% in Round 13) indicated a country within

the European Union, with Denmark mentioned most frequently by respondents (19%), followed by virtually equal shares for The Netherlands, Germany, Czechia, Georgia (13% each), Portugal, the United States of America, Canada and the United Kingdom (6%). In four of the five oblasts hosting the largest number of IDPs, a relatively limited share of IDPs considering re-displacement but not return, namely 9 per cent (in Kharkivska Oblast and Kyiv City) and 5 per cent (Odeska and Dnipropetrovska Oblasts) of IDPs considering the possibility of relocation but not return, mentioned relocation abroad. This is a notable shift from Round 13 when Kyivska, and Odeska Oblasts had the highest percentage of IDPs intending to relocate abroad.

## IMMEDIATE MOBILITY INTENTIONS

### TIMELINE OF INTENDED RELOCATION

Among the 22 per cent of IDPs who reported wishing to leave their current location, around 6 per cent of IDPs were planning to leave their current location in one month (est. 52,000 nationwide). Within this subset, three per cent intended to do so in the two weeks following the survey (est. 25,000 nationwide). Compared to Round 13, there has been a significant reduction in the number of people with immediate plans to relocate. The share of individuals intending to relocate within one month after the survey has dropped from 15 to 6 per cent. Within this group, the proportion of those planning to relocate within two weeks following the survey has also decreased, going from seven down to three per cent. By contrast, among those Ukrainians who had not been displaced, the share of people considering relocation remains stable and in line with previous rounds, but still very small (around 2% nationwide).

In some oblasts, a larger share of IDPs were considering relocation – in Zakarpatska (48%) and Lvivska (45%) substantial shares of IDPs stated thinking about relocating (regardless of the destination). Other oblasts where relatively larger proportions (at least one-third) of IDPs were considering relocation include Vinnytska, Kirovohradska, Poltavska, Cherkaska and Chernivetska. Out of the IDPs surveyed, approximately 59 per cent (estimated 2,163,000 individuals) indicated that they had no plans to leave their current location at the time of the survey. The largest proportion of IDPs opting to stay in their present location was observed in Kyiv city (69% of IDPs currently there, est. 251,000), followed nearly by Dnipropetrovska Oblast (64% of IDPs currently there, est. 320,000) among the top oblasts hosting IDPs. Remarkably, nearly all IDPs currently in Khersonska Oblast (92%) expressed their intent to stay in their present location. It is worth noting that almost one-fifth of IDPs either do not know or are unable to make plans due to the security situation.

Figure 15: Shares of IDPs and non-displaced people considering relocation, from Round 2 (April 2022) to Round 14 (September 2023)

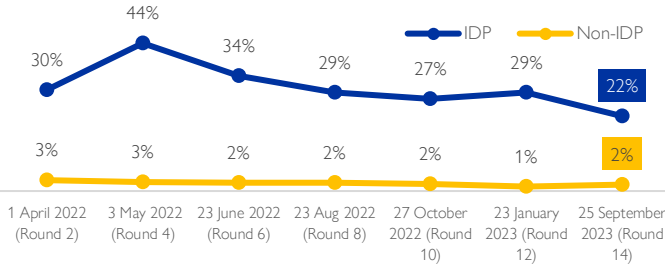


Figure 17: Intended timeline for relocation among IDPs considering it, with nation-wide estimates

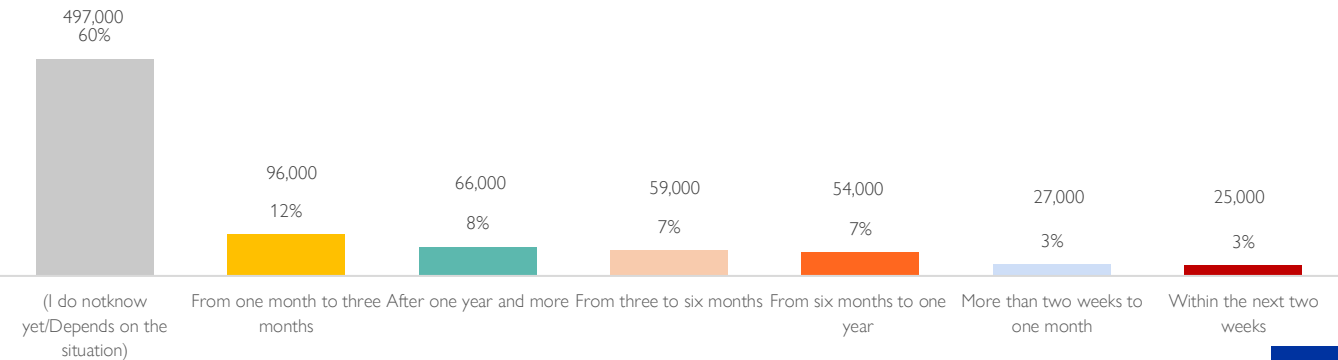
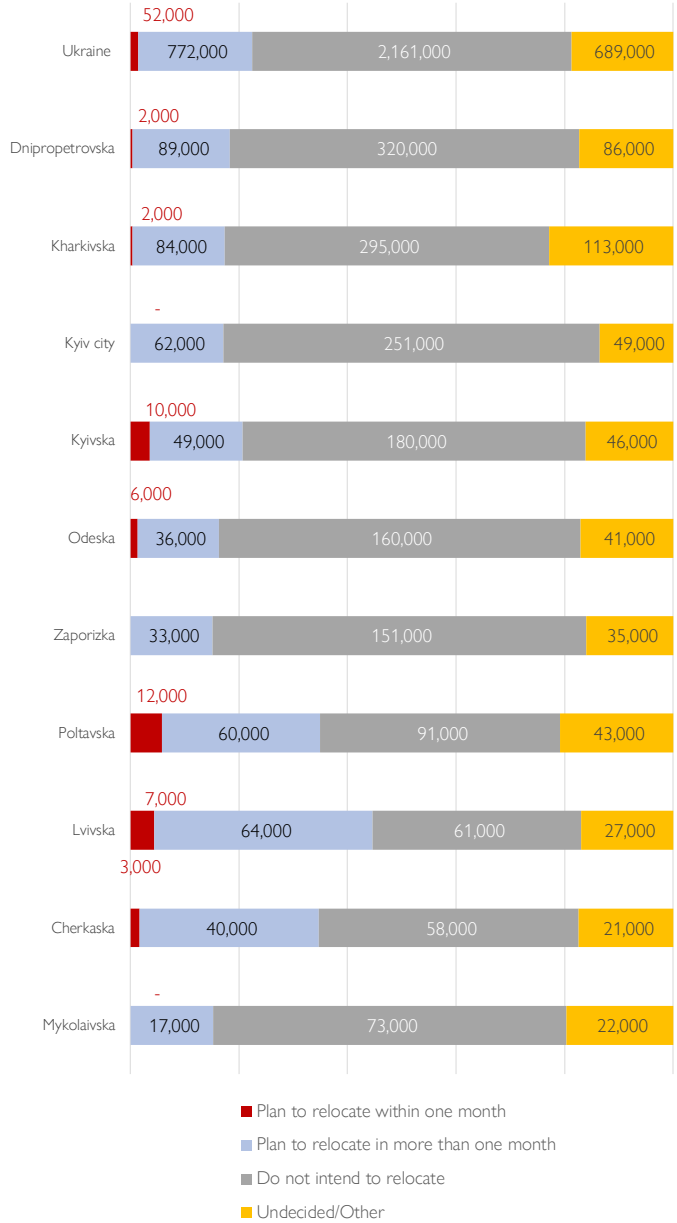


Figure 16: Immediate mobility intentions of IDPs in the top 10 IDP-hosting oblasts



## LONG-TERM INTENTIONS – DURABLE SOLUTION PATHWAYS

Sixty-two per cent of IDPs planned to eventually return to their place of habitual residence (est. 2,300,000). This is to be contrasted with the 22 per cent of IDPs who intended to return in the short-run. Of the displaced households who did not plan to return in the long-run, one-fifth (18%, or 665,000 people) planned to integrate into their current location and build a life there (compared to 59% who expressed the wish to stay in their current location in the short-term), followed by 3 per cent (113,000) who planned to resettle in a place other than their current location or habitual place of residence.

Among the top ten oblasts of displacement, the highest shares of IDPs intending to integrate were found in Kyivska (27%), Odeska (24%) and Dnipropetrovska (21%) Oblasts. In addition, almost a quarter of IDPs located in Kyiv city reported the wish to integrate, while the shares of those who planned to return were highest in the Poltavska and Cherkaska regions.

Men and women expressed plans to integrate at equal rates (18% for both). Notably, a larger share of respondents staying in rural areas (68%) indicated planning on returning to their place of habitual residence; conversely, IDPs who expressed the desire to integrate were more likely to live in large cities (21%) than other settlement types. Furthermore, the plan to return was expressed by over three-quarters (76%) of IDPs living in collective centers.

Table 10: Long-term mobility intentions of IDPs, from Round 8 (August 2022) to Round 14 (September 2023)

<b>Projected Return stock</b>	2,273,000 IDPs
<i>IDPs who remain in displacement with the intention to seek return as a durable solution – an estimate of potential future number of IDPs on the return pathway.</i>	
<b>Local Integration stock</b>	675,000 IDPs
<i>IDPs who are seeking integration as a durable solution to their displacement in their current location, and thus are already on a pathway to a solution to their displacement</i>	
<b>Projected Resettlement stock</b>	113,000 IDPs
<i>IDPs who remain in displacement with the intention to seek resettlement to another location as a durable solution – an estimate of potential future number of IDPs on the resettlement pathway.</i>	
<b>Durable Solutions preference not yet determined</b>	613,000 IDPs (of whom 25,000 currently relocating, and 588,000 don't know)

Figure 18: Long-term mobility intentions of IDPs in the top 10 oblasts of displacement and nationwide

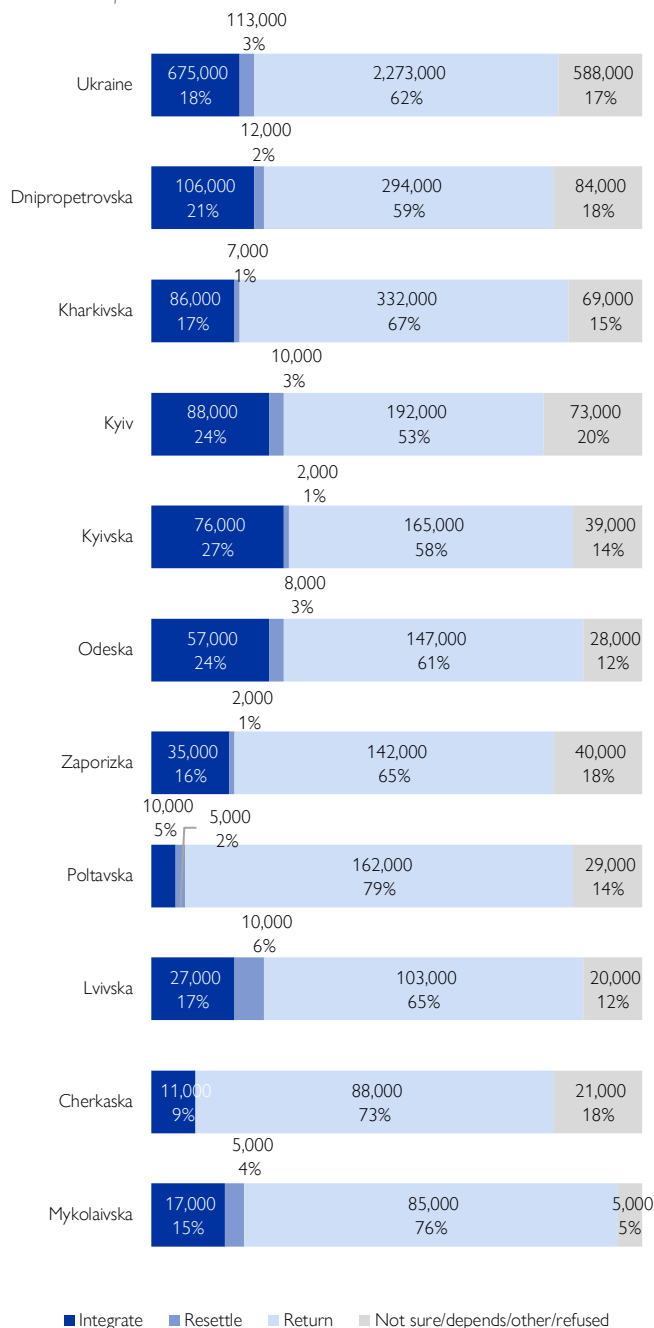
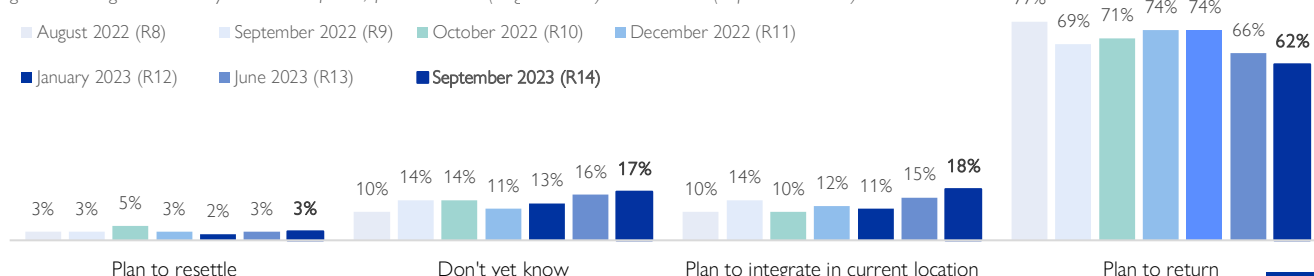


Figure 19: Long-term mobility intentions of IDPs, from Round 8 (August 2022) to Round 14 (September 2023)



## DURABLE SOLUTION PATHWAYS : PROFILE OF IDPs INTENDING TO INTEGRATE

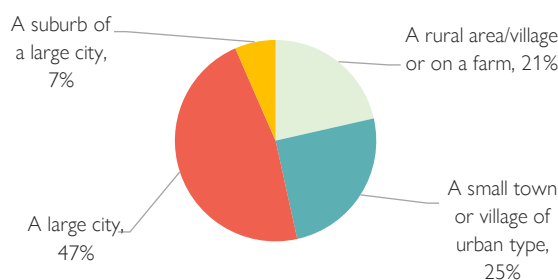
The majority of IDPs who intended to integrate in their current locations lived in urban settlements (47%). Within the subsample of IDPs who intended to integrate, households were composed of an estimated 123,000 of school-aged children (5-17 years old), while an estimated 401,000 were adults of working age.

Tables 11 and 12: Sex and age disaggregation of IDP households considering integration in the location they currently reside in

Estimated group size	Female	Male	Total
Infants	0.8%	0.3%	0.6%
1-4 years old	4.8%	7.6%	6.0%
5-9 years old	7.2%	10.0%	8.4%
10-17 years old	7.9%	11.6%	9.5%
Adults 18-29	16.8%	16.3%	16.6%
Adults 30-39	20.7%	16.6%	18.9%
Adults 40-49	12.6%	15.3%	13.8%
Adults 50-59	11.2%	8.4%	10.0%
Elderly (60+)	18.0%	13.9%	16.2%
<b>Total</b>	<b>56.0%</b>	<b>44.0%</b>	<b>100.0%</b>

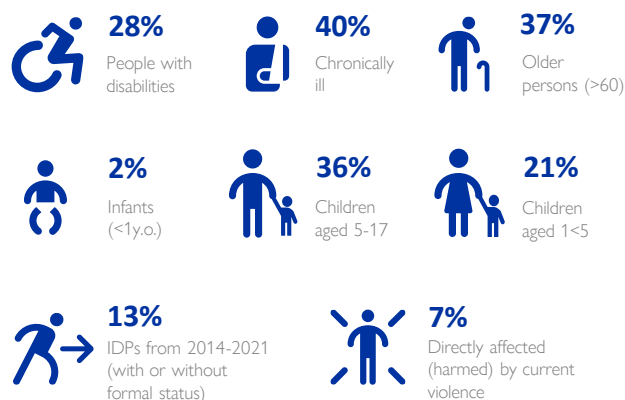
Estimated group size	Female	Male	Total
Infants	3,000	1,000	4,000
1-4 years old	18,000	23,000	41,000
5-9 years old	27,000	30,000	57,000
10-17 years old	30,000	34,000	64,000
Adults 18-29	63,000	49,000	112,000
Adults 30-39	78,000	49,000	127,000
Adults 40-49	48,000	45,000	93,000
Adults 50-59	42,000	25,000	67,000
Elderly (60+)	68,000	42,000	110,000
<b>Total</b>	<b>377,000</b>	<b>298,000</b>	<b>675,000</b>

Figure 20: Share of IDP considering integration in the location they currently reside in, by settlement type



### HOUSEHOLD VULNERABILITIES

The share of IDPs who reported that one or more of their current household members fall within one of the following vulnerability categories (read as: “36% of IDP respondents indicate that at least one member of the family currently with them is a child between ages of 5 and 17”):



### IDP INTEGRATION NEEDS

IDPs who expressed a plan for local integration were asked about the support they needed to integrate. While cash support was the most mentioned integration need (45%) from the entire sub-sample, a third of displaced males also expressed a need for support to increase their chances of securing an income (for example, through vocational training). Displaced women more frequently reported the need for psychosocial assistance, as well as essential health care and other services.

Figure 21: Level of integration support needed by IDPs who plan to integrate in the current location, by support type

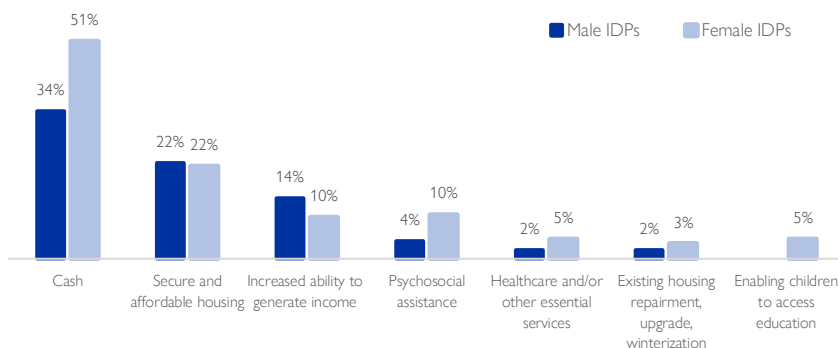
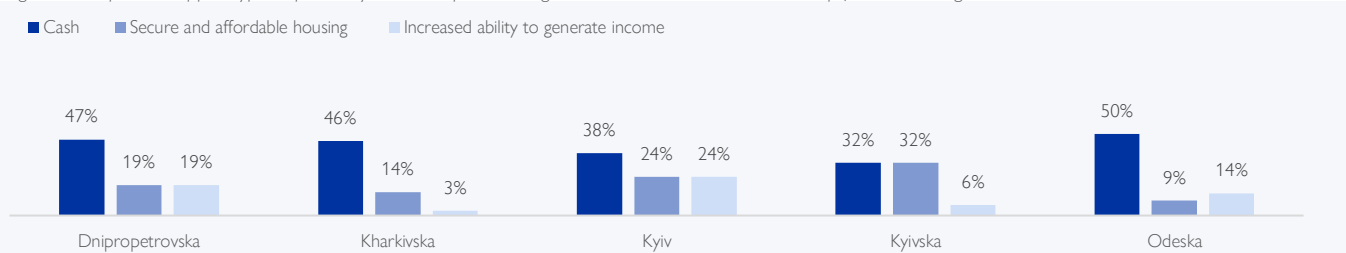


Figure 22: Top three support types reported by IDPs who plan to integrate in the current location in the top five IDP-hosting oblasts



## DURABLE SOLUTION PATHWAYS : THE IASC CRITERIA

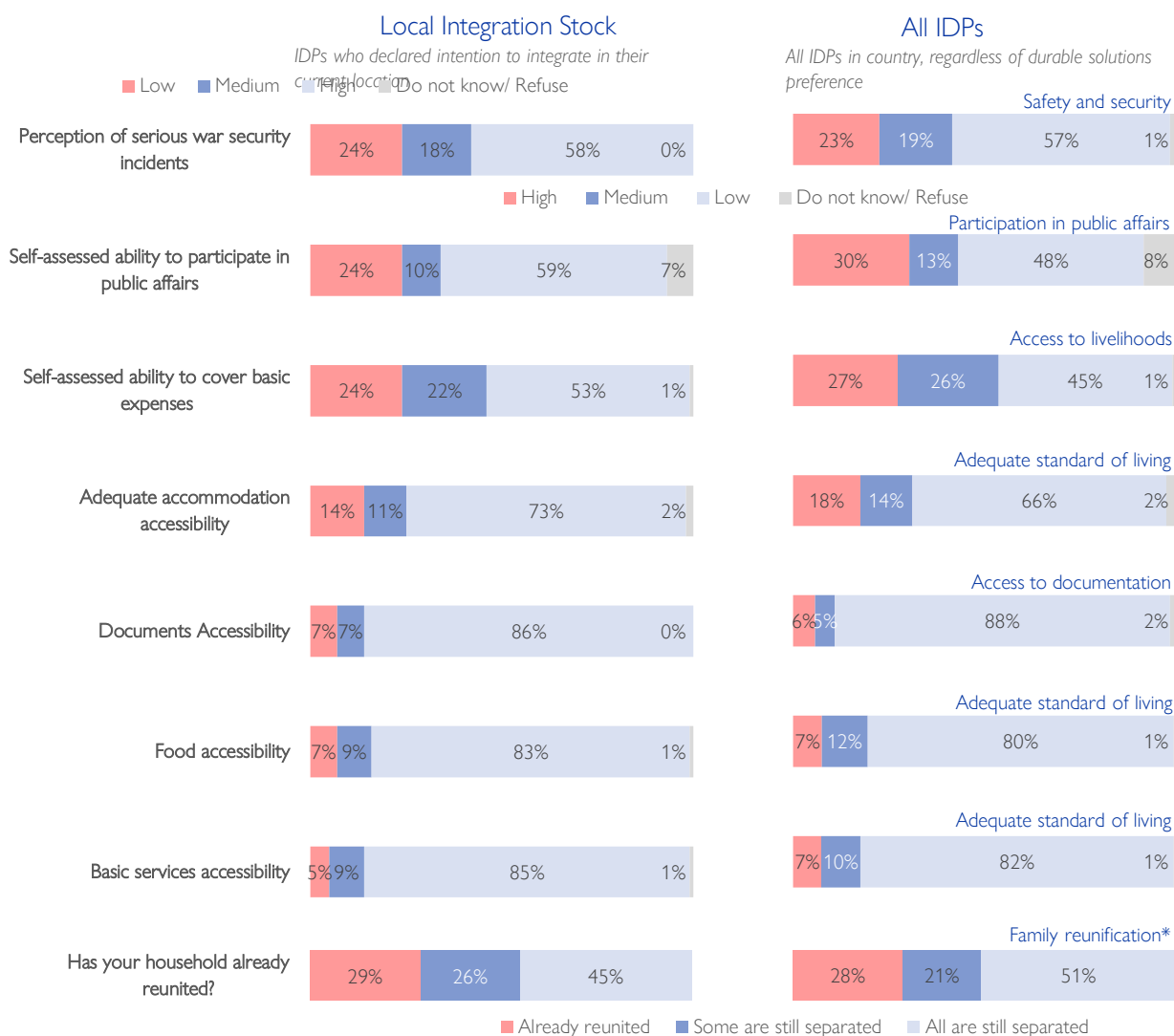
Supporting IDPs in achieving lasting solutions to internal displacement requires analysis of their unique needs and vulnerabilities within their specific context. This section serves as an overview of the challenges encountered by the displaced population, with a particular emphasis on the eight criteria outlined in the Inter-Agency Standing Committee's (IASC) Framework on Durable Solutions for IDPs. To evaluate progress towards durable solutions, IOM has developed a set of questions that provide a preliminary assessment of these criteria within the Ukrainian context. These questions cover vital aspects, such as safety and security, living standards, livelihood opportunities, access to documentation, participation in public affairs, and family reunification.

This round of the General Population Survey included indicators relating to housing, land, and property (HLP) as well as participation in public affairs, adapted to the Ukrainian context, key results of which may be found on the 'Durable Solutions Pathway' page.

**NOTE:** As a key follow up to the *Data for Solutions* Symposium organized by IOM under the aegis of the United Nations Resident Coordinator's office in Ukraine (RCO), a Roadmap to a Joint Analytical Framework on Durable Solutions to Internal displacement in Ukraine is under development. Once the joint framework is developed, IOM shall include the collectively agreed-upon indicators in the General Population Survey. See the Symposium report and recommendations [here](#).

At the national level, the primary concerns for the displaced population revolved around the ability to cover basic expenses, noted as a 'high' or 'medium' concern by 53 per cent of respondents, family reunification (49%) and participation in public affairs (43%). On the other hand, concerns relating to safety and security decreased significantly between Rounds 13 and 14, from 77 per cent to 42 per cent.

Figure 23: self-assessment of IDPs according to the eight IASC Durable Solutions framework criteria, by reintegration status



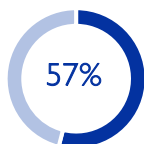
\*N.B. Data are given in relation to those who reported being separated from family members during the war (41% of the entire sample and 44% of those who plan to integrate in their current location).

Respondents rated their access to services, goods, and community participation on a scale from 0 (not easy) to 10 (very easy). Security incidents were assessed on a scale from 0 (never) to 10 (always), indicating the perceived frequency. Family unity was evaluated through questions about separation from other members and subsequent reunification. Responses were categorized as low (points 10-6), medium (point 5), and high (points 4-0) levels based on specific needs and vulnerabilities for analysis and reporting purposes.

## DURABLE SOLUTION PATHWAYS : THE IASC CRITERIA

This section examines in-depth data collected relevant to each of the criteria outlined by the IASC Framework on Durable Solutions for IDPs for durable solutions\* among a **specific sub-sample of IDPs who are already on their “solutions pathway” – those who intend to integrate into their current location.**

### SAFETY AND SECURITY



of IDPs who intend to integrate in their current location reported frequently experiencing security incidents related to the ongoing war.

Fewer IDPs reported frequently experiencing safety incidents compared to previous rounds; although significant shares of people displaced in Odeska, Khersonska, Donetsk and Zaporizka Oblasts did report experiencing frequent incident, indicating a shift south of the war. In all but three oblasts, IDPs perceived being subject to attacks at lower rates than returnees, possibly pointing to a difference in perceptions of safety in displacement and return locations.

IDPs residing in large cities were more likely to report experiencing frequent serious security incidents, compared to IDPs currently staying in rural areas, villages or small towns.

### COVERING BASIC EXPENSES

Among IDPs intending to integrate in their current location, approximately 27 per cent reported facing significant difficulties in covering basic expenses. IDPs' inability to pay for basic costs is not restricted to a particular region: at least two-thirds of IDPs have reported difficulties to cover expenses in Khersonska oblasts in the south, Chernihivska and Zakarpatska in the west, Chernivetska in the north and Donetsk in the east.

Notably, similar shares of female and male respondents indicated struggling to cover their expenses.



26%

IDPs wanting to integrate in large cities and their suburbs reported struggling to cover the costs of their basic expenses.



31%

IDPs wanting to integrate in rural areas reported serious difficulties to cover the costs of basic expenses.

### FAMILY REUNIFICATION

IDPs residing and intending to integrate in the city of Kyiv, and in Zakarpatska, Kharkivska, Sumska, Zhytomyrska, Zaporizka, Kyivska and Ivano-Frankivska Oblasts reported the highest rates of family separation. The largest shares of IDPs who indicated being separated from their families during displacement came from Kharkivska, Luhanska, Donetsk, and Khersonska Oblasts.

In addition, higher percentages of younger IDPs reported being separated from their family, three-quarters of whom have reunited with no or only some members of their family, while elderly IDPs displayed the lowest shares of reports of family separation.

Furthermore, a greater proportion of female IDPs who wish to integrate locally reported having been separated from their families, and among them, one-third are still awaiting reunification.

*\*The analysis and survey reflect seven out of the eight IASC Durable Solutions criteria, as it was deemed that timing was not yet fit for assessing the IDP access to effective remedies and justice (Criterion #8).*

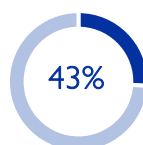
### ADEQUATE STANDARD OF LIVING

Overall, 18 per cent of IDPs on the integration pathway reported facing moderate to severe difficulties in accessing basic services (clean water, sanitation, healthcare, school, communication networks, etc.).

Additionally, 7 per cent of IDPs mentioned having serious issues accessing food for themselves and their family. Ternopilka, Sumska, Lvivska and Volynska Oblasts displayed the largest proportions of IDPs struggling to access food (12%).

Moderate or serious shortage of adequate accommodation was also indicated by 31 per cent of IDPs in their location of integration. Lack of adequate housing was most prevalent among IDPs integrating in Rivnenska, Kirovohradska, Chernivetska, Cherkaska, Kyivska and Ivano-Frankivska Oblasts. The shares of IDPs reporting inadequate access to suitable accommodation were similar amongst men and women, but a larger share (+10 percentage points) of elderly respondents indicated struggling to find housing when compared to young adults.

### PARTICIPATION IN PUBLIC AFFAIRS



of IDPs who intend to integrate reported it was moderately or very difficult for them to participate in public affairs and the resolution of community issues in their current location

Issues with participating in community council meetings, committees, neighborhood councils, cooperatives, school boards, etc. were most prominent among IDPs integrating in Zakarpatska, Khersonska and Donetsk Oblasts where at least half of integrating IDPs reported difficulties.

Notably, IDPs originally from East and South macro-regions reported the greatest challenges in participating in public affairs.

Meanwhile, close to half of IDPs aged 60 or older mentioned not being able to participate in public affairs, compared with a quarter of IDPs aged 25-34 and less than one-fifth of respondents aged 18-25.

The proportions of IDPs reporting difficulty in involvement in public affairs did not differ significantly by sex.

### DOCUMENTATION

Eleven per cent of IDPs intending to locally integrate reported encountering moderate or significant difficulties in accessing documentation, including obtaining certifications for personal identification, education level, and professional experience. Specifically, displaced people currently residing in the eastern oblasts, particularly in Zhytomyrska, Odeska and Sumska Oblasts, as well as in the city of Kyiv, faced these challenges to a greater extent.



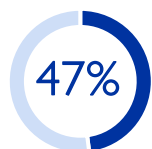
IDPs from Donetsk, Kharkivska, Khersonska, Luhanska, Zaporizka, and Mykailovska Oblasts, as well as Kyiv city, who intend to locally integrate, reported facing greater difficulties in terms of access to documents.



## DURABLE SOLUTIONS SPOTLIGHT: HOUSING, LAND, AND PROPERTY (HLP)

### HOUSING RESTORATION AND COMPENSATION NEEDS

Monitoring the situation of the displaced population who require access to mechanisms for housing, land, and property restitution is crucial in measuring IDPs' prospects for achieving solutions regardless of their preferred solution pathway - integration, return, or resettlement.



Of IDPs self-reported that their households owned a house/apartment that was damaged or destroyed by the war since February 2022, while among the resident population, eight per cent stated damaged housing property ownership.

*N.B. The inability of respondents to visit the location may lead to an overabundance of self-reports regarding destroyed housing.*

A significant percentage of IDPs whose place of origin was Luhanska Oblast (72%) reported owning destroyed or damaged housing, followed by IDPs from Donetsk (56%), Chernihivska (56%), Khersonska (51%), and Kharkivska (47%) Oblasts. A notable number of IDPs originate from these areas (est. 1.3 million people), demonstrating the importance of housing compensation and rehabilitation planning to achieve durable solutions and address housing-related vulnerabilities in areas of displacement, resettlement, and return.

### MECHANISMS TO RESTORE HOUSING

The limited financial resources of displaced populations can prevent repairs to damaged residences or the ability to purchase new homes when relying on their own funds. The situation becomes more complicated when residences are in territories under temporary military control by the Russian Federation, or in areas continuously affected by conflict or long-range attacks. Considering the vulnerability of displaced people related to housing is acute, the national and international stakeholders continue the recovery support provision, through compensation and restoration of destroyed housing and property, via national and localized mechanisms.



Of IDPs whose residential houses were affected due to the war since February 2022 confirmed receiving assistance, including new housing, repairs to existing housing, compensation, or other forms of assistance.

On 10 May 2023, the state launched the housing restoration “eVidnovlenia” programme to provide financial assistance from the state for the repairing and compensation of housing units affected as a result of the war. Eighty per cent of IDPs who owned damaged or destroyed housing reported that they are aware of the programme. The IDPs living in small towns or urban-type villages were slightly less aware of the eVidnovlenia initiative (20%). Also, a lower level of awareness was identified among IDPs aged 60 and over (only 70% said they knew of the programme). No significant disparities were found between men and women.

In total, 37 per cent of IDPs reported that they had made an attempt to apply for participation in the programme, most of whom indicated being originally from East macro-region and the city of Kyiv. Six per cent of those IDPs who applied reported that they had received compensation\*.

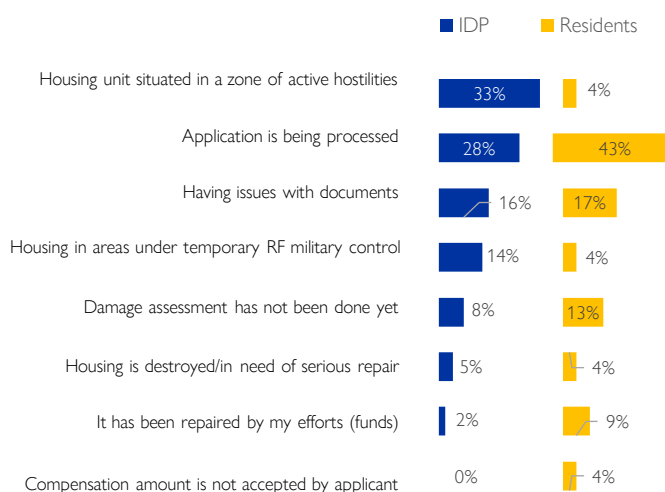
\*The response rate represents respondents' perception of receiving assistance, including counselling assistance. These figures are based on individual perceptions and actual applicant and recipient rates may be higher.

### BARRIERS TO ACCESS TO HOUSING COMPENSATION

For most of the interviewed IDPs, the main obstacle to accessing housing compensation mechanisms was the location of their house in a war zone or in territories under temporary military control of the RF, for which compensation is not provided at the current programme stage.

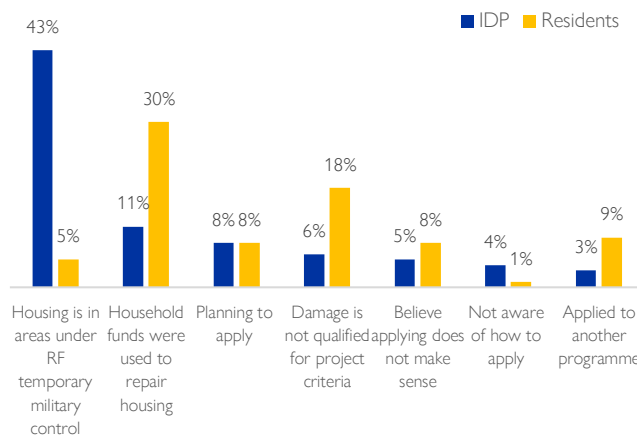
The bulk (82%) of displaced people stated the availability of official documents confirming ownership of the mentioned housing. However, 16 per cent of IDPs stated their claims to residential house damage compensation have not been resolved due to documentation issues. It was mainly centered on cases of incomplete document packages or invalid documents, etc.

Figure 24: Reason for not receiving housing compensation, by respondent profile



The fact that their house was located in a war zone was the main reason for which IDPs who did not seek compensation for the state programme for affected housing did not apply. Notably, the IDPs are significantly less likely to indicate that damaged housing was repaired using their financial resources compared to the non-displaced population. It might be related to both the physical inaccessibility of housing and the degree of damage.

Figure 25: Reason for not participating in the housing compensation mechanism, by respondent profile



## DURABLE SOLUTIONS SPOTLIGHT: PARTICIPATION IN PUBLIC AFFAIRS

In Round 14 of the General Population Survey, we chose to focus on specific criteria for durable solutions. With that in mind, the choice was made to prepare this section spotlighting participation in public affairs.

### ENGAGEMENT AND PERCEIVED INFLUENCE

When asked about their **engagement in public affairs and social events**, IDPs consistently reported the highest proportion of respondents claiming ‘not at all’ for their level of engagement across all indicators, compared to returnees and non-IDPs. Across all population groups assessed, no engagement at all was consistently cited as the highest response, with public affairs engagement consistently low irrespective of positioning along the durable solutions pipeline.

In comparison, the category with the highest level of engagement across all population groups was schooling and education (7% returnees, 6% IDPs, 4% non-IDPs noting great engagement). Similarly, school administrations and teachers were noted as the second-largest site of influence, demonstrating an effective site of productive engagement (greatest among returnees at 21%).

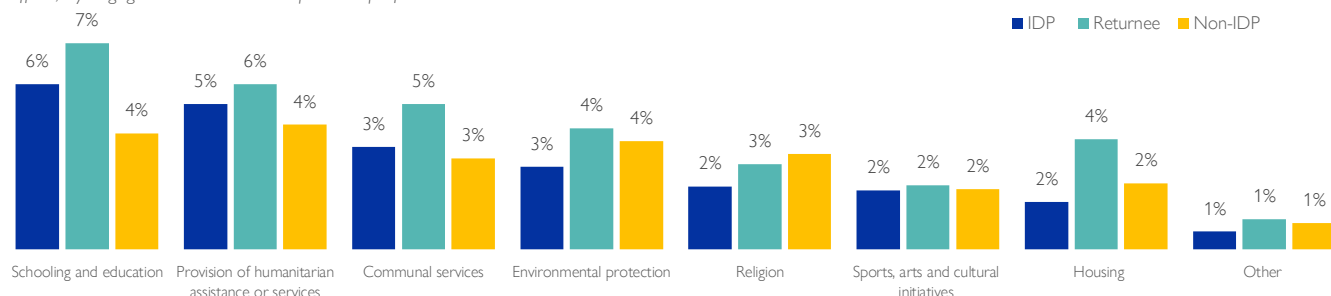
When considering perceived influence, government bodies or authorities were recognised as the greatest body of influence among the non-IDPs and IDPs (20% and 18% respectively). However, an overall concern for a lack of influence was identified across all population groups, with a large share of respondents claiming, ‘I don’t influence community’s decision-making at all’. This response was noted primarily among IDPs, with 54 per cent claiming a lack of influence (50% non-IDPs and 40% returnees).

Figure 26: Share of respondents reporting having no influence in the community in which they currently live, by respondent profile



Considering a gendered lens, female IDPs find it marginally more difficult to participate in public affairs, with 32 per cent noting a high inability to do so (compared to 28% of assessed males). However, for IDPs stating a medium difficulty level in participating, this was equal across both male and female participants (13% each).

Figure 28: Share of respondents indicating being highly engaged in public affairs, by engagement sector and respondent profile



**A lack of participation in public affairs was most commonly reported by IDPs currently residing in the western oblasts of Ukraine.** Specifically, Zakarpatska Oblast had the highest proportion, with 55 per cent of the surveyed IDPs currently displaced there reporting a low self-assessed ability to participate in public affairs. This was followed by Khersonska (50%) and Donetsk (47%) Oblasts, along the frontline. This is likely to be due to intensified military action impacting the ability to conduct organised public affairs. Consistent with the identification of frontline areas as sites lacking participation, 32 per cent of respondents (each) identified difficulty participating in the North and East of the country.

Conversely, IDPs in Zhytomyrska Oblast reported the greatest ability to participate in public affairs (70%). This was followed by Vinnytska (59%) and Kyiv (58%) Oblasts.

The rural or urban setting at the time of the interview appears to have an impact on the self-perceived ability to participate in public affairs. Specifically, the further away the assessed populations are located from a city centre, the increasingly harder they find it to participate in public affairs. Twenty-five per cent of IDPs located in large cities found it difficult to participate, in comparison to 36 per cent of those located in highly rural areas, a difference of over 10 per cent.

Figure 27: Share of respondents reporting participating in public affairs, by current settlement type



### TRUST AMONG POPULATION GROUPS

Across all population groups, family members and relatives were consistently cited as the most trustworthy, with over 80 per cent of all groups trusting family members ‘to a great extent’. Friends were considered the second-most trustworthy group, listed by all population types. This reliance on informal personal connections indicates a strong sense of close community ties.

The least trustworthy group listed by all population types was the church, with 24 per cent of IDPs claiming complete mistrust.

## ESTIMATED POPULATION BY DISPLACEMENT STATUS

Oblast	Estimated <i>de facto</i> IDPs present	Estimated returnee pop. present
Cherkaska	121,000	62,000
Chernihivska	68,000	196,000
Chernivetska	68,000	19,000
Dnipropetrovska	498,000	323,000
Ivano-Frankivska	88,000	58,000
Kharkivska	494,000	567,000
Khmelnitska	70,000	40,000
Kirovohradska	83,000	30,000
Kyiv	363,000	1,042,000
Kyivska	285,000	808,000
Lvivska	160,000	125,000
Mykolaivska	111,000	201,000
Odeska	240,000	241,000
Poltavska	206,000	43,000
Rivnenska	37,000	65,000
Sumska	78,000	135,000
Ternopil'ska	57,000	33,000
Vinnytska	110,000	69,000
Volyn'ska	29,000	47,000
Zakarpatska	85,000	8,000
Zhytomyrska	72,000	145,000
<i>Donetska*</i>	<i>88,000</i>	<i>120,000</i>
<i>Zaporizka*</i>	<i>220,000</i>	<i>113,000</i>
<i>Luhanska*</i>	<i>n/a</i>	<i>n/a</i>
<i>Khersonska*</i>	<i>23,000</i>	<i>68,000</i>
Residence location unknown (in Ukraine)**	20,000	15,000
<b>Total population</b>	<b>3,674,000</b>	<b>4,573,000</b>

\* Estimates in Donetsk, Zaporizka, Luhanska and Khersonska Oblasts (blue text) are likely under-represented due to limited coverage of government-controlled areas only, as well as the limited number of respondents reached through the random digit dial.

\*\* Respondents currently on short term trips outside of places of current residence (away from residence, away from location of displacement)

## A BRIEF NOTE ON THE METHODOLOGY

The data presented in this report was commissioned by the International Organization for Migration (IOM) and collected by Multicultural Insights through phone-based interviews with 20,000 randomly selected respondents per round using the computer-assisted telephone interview (CATI) method, and a random digit dial (RDD) approach, with an overall sample error of 0.69% [CL95%]. Round 14 of data collection was completed between 3 and 25 September 2023. The survey included all of Ukraine, excluding the Crimean Peninsula and the areas of Donetsk, Luhanska, Khersonska, and Zaporizka Oblasts under the temporary military control of the Russian Federation where phone coverage by Ukrainian operators is not available. All interviews were anonymous, and respondents were asked for consent before starting the interview. A total of 51 interviewers were employed in this work. The team consisted of male and female interviewers and the interviews were conducted in Ukrainian (87%) and Russian languages (13%), with language selection by preference of each respondent.

Limitations: The exact proportion of the excluded populations is unknown, and certain considerations are to be made when interpreting results. Those currently residing outside the territory of Ukraine were not interviewed, following active exclusion. Population estimates assume that minors (those under 18 years old) are accompanied by their adult parents or guardians. The sample frame is limited to adults that use mobile phones. It is unknown if all phone networks were fully functional across the entire territory of Ukraine for the entire period of the survey; therefore, some numbers may have had a higher probability of receiving calls than others. Residents of areas with a high level of civilian infrastructure damage may have a lower representation among the sample – one may assume the needs in the report are skewed towards under-reporting. People residing in the Autonomous Republic of Crimea (ARC) or the NGCA Donetsk and Luhansk were not among the people surveyed/ were not included in the survey. For further details on the methodology and sampling design, please refer to the full Methodological Note (publication forthcoming).

**Disclaimer:** The opinions expressed in this report are those of the authors and do not necessarily reflect the views of the International Organization for Migration (IOM). The information contained in this report is for general information purposes only. The designations employed and the presentation of material throughout the report do not imply expression of any opinion whatsoever on the part of IOM concerning the legal status of any country, territory, city or area, or of its authorities, or concerning its frontiers or boundaries. Unless noted otherwise, data cited in this report were compiled from Round 14 of the General Population Survey, dated as of September 25, 2023. All numbers are rounded for ease of use. Data collection was facilitated by Multicultural Insights.



IOM UKRAINE