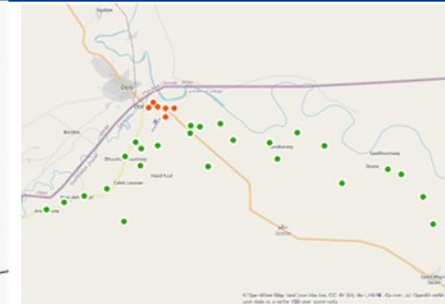
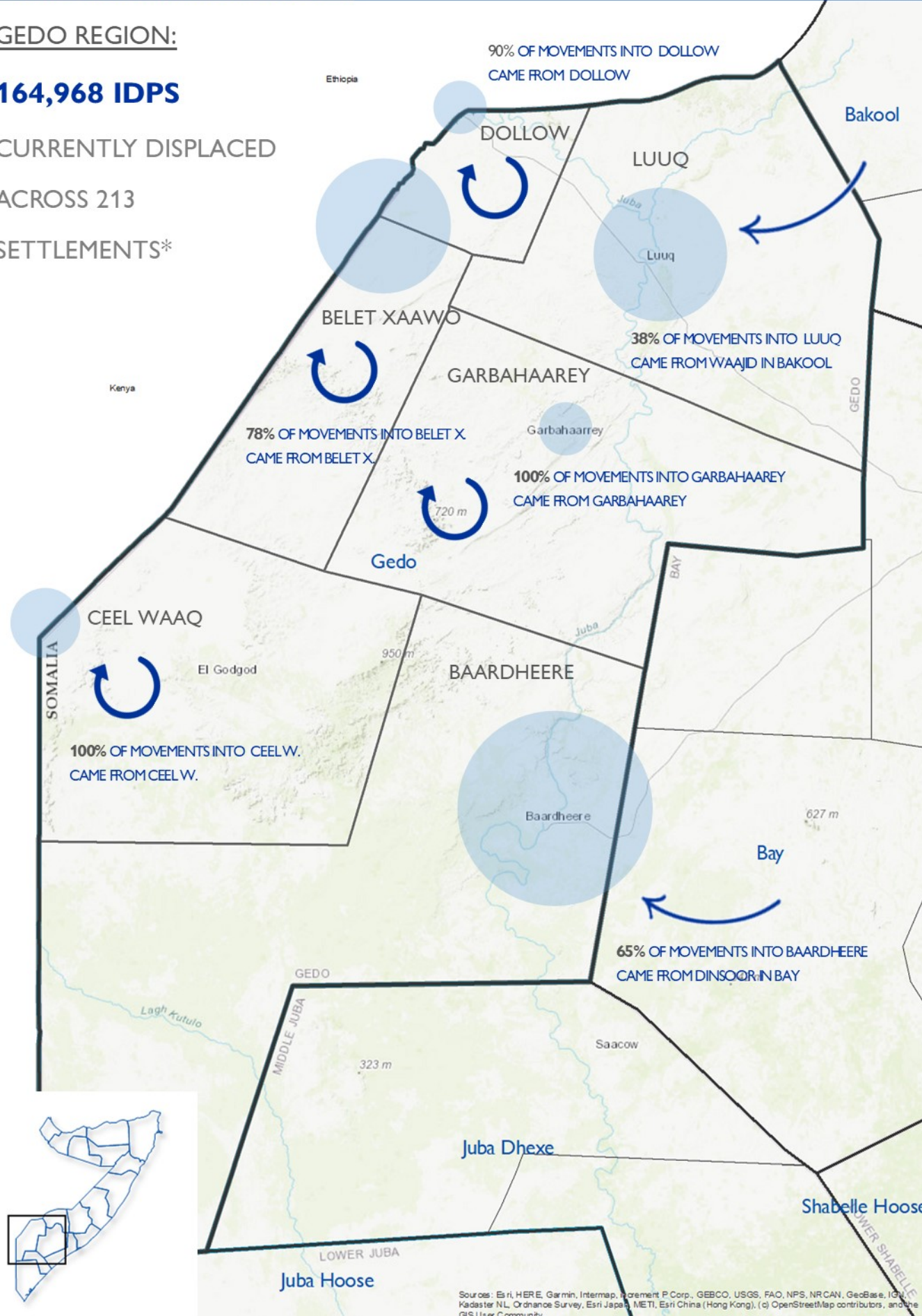


GEDO REGION:

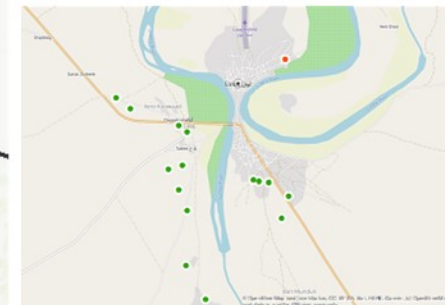
164,968 IDPS

CURRENTLY DISPLACED
ACROSS 213
SETTLEMENTS*



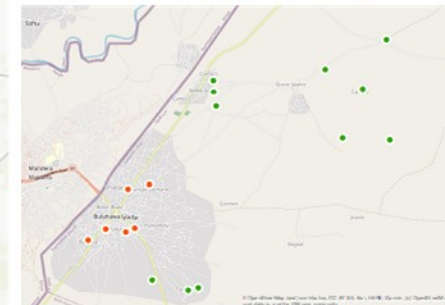
DOLLOW:

2,824 IDPS ACROSS
42 SETTLEMENTS, OF WHICH
2 IDP SITES



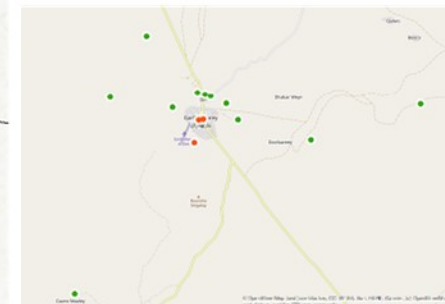
LUUQ TOWN:

34,268 IDPS ACROSS
45 SETTLEMENTS, OF WHICH
23 IDP SITES



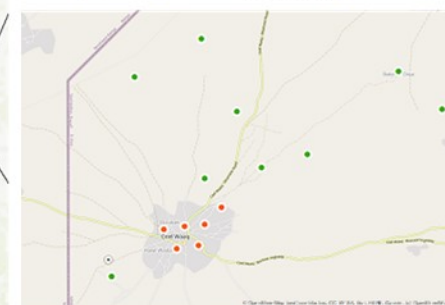
BELET XAAWO TOWN:

56,184 IDPS ACROSS
30 SETTLEMENTS, OF WHICH
4 IDP SITES



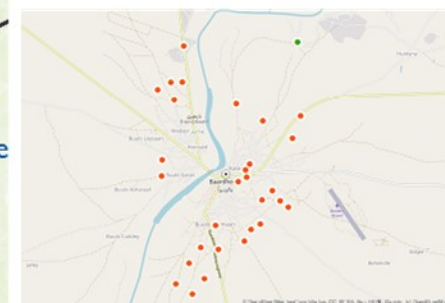
GARBAHAAREY TOWN:

4,552 IDPS ACROSS
19 SETTLEMENTS, OF WHICH
6 IDP SITES



CEEL WAAQ TOWN:

9,254 IDPS ACROSS
39 SETTLEMENTS, OF WHICH
3 IDP SITES



BAARDHEERE TOWN:

57,886 IDPS ACROSS
38 SETTLEMENTS, OF WHICH
21 IDP SITES

POPULATION MOBILITY
KEY FINDINGS:



213

ASSESSED SETTLEMENTS



164,968

INTERNALLY DISPLACED PEOPLE



60%

MOVEMENTS WITHIN THE REGION



52%

MOVEMENTS WITHIN DISTRICTS



99%

SPONTANEOUS MOVEMENTS



68%

FIRST DISPLACEMENT



68%

TRAVEL BETWEEN 1 - 4 DAYS



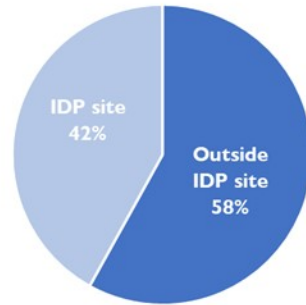
36% MOVE BY MOTOR VEHICLE

* ACROSS URBAN SETTLEMENTS (NEIGHBORHOODS IN EACH DISTRICT MAIN TOWN) AND RURAL SETTLEMENTS (ONLY VILLAGES IN THE PERIPHERY OF THE MAIN TOWNS).

Sources: Esri, HERE, Garmin, Intermap, increment P Corp., GEBCO, USGS, FAO, NPS, NRCAN, GeoBase, IGN, Kadaster NL, Ordnance Survey, Esri Japan, METI, Esri China (Hong Kong), (c) OpenStreetMap contributors, and the GIS User Community

SUMMARY FIGURES

District main towns	# Settlements	# IDPs
Bardheere	38	57,886
Belet Xaawo	30	56,184
Ceel Waaq	39	9,254
Doolow	42	2,824
Garbahaarey	19	4,552
Luuq	45	34,268
Total	213	164,968

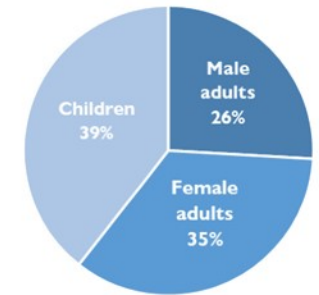


% OF INDIVIDUALS IN IDP SITES AND OUTSIDE IDP SITES

IDPs DEMOGRAPHIC PROFILE

District main towns	# IDPs	# Male adults	# Female adults	# Children
Bardheere	57,886	15,377	19,541	22,968
Belet Xaawo	56,184	12,480	16,660	27,044
Ceel Waaq	9,254	3,395	3,692	2,167
Doolow	2,824	669	884	1,270
Garbahaarey	4,552	866	1,535	2,151
Luuq	34,268	6,723	13,481	14,064
Total	164,968	39,510	55,793	69,664

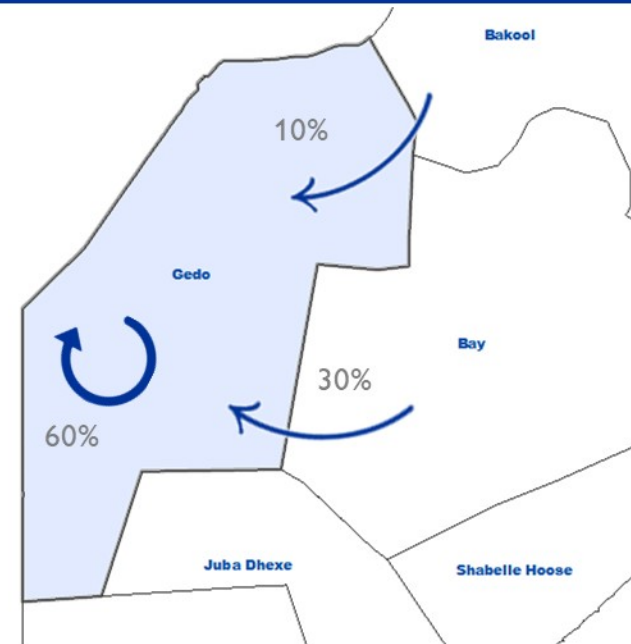
IDPs' SEX AND AGE BREAKDOWN



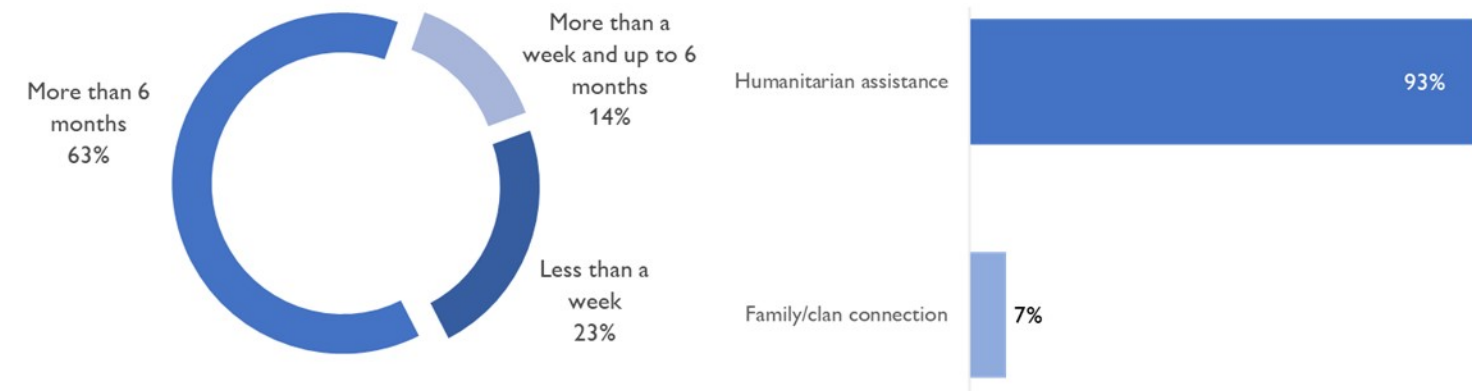
REGIONS OF ORIGIN

Region of origin	% IDPs
Bakool	10%
Bay	30%
Gedo	60%

% IDPS BY REGION OF ORIGIN

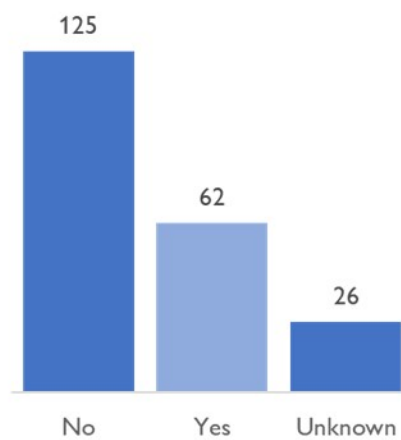


EXPECTED DISPLACEMENT DURATION AND REASON FOR DISPLACEMENT LOCATION

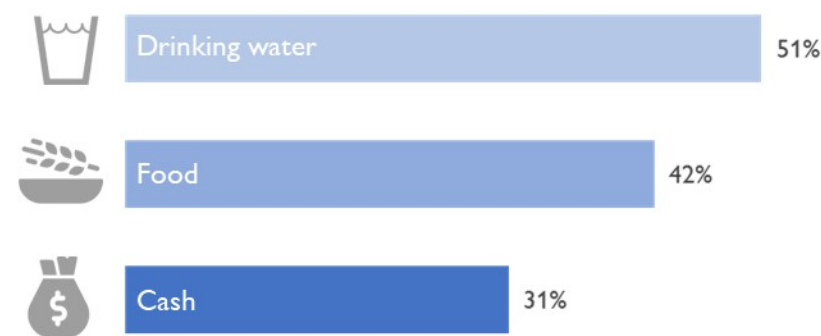


% IDPs BY DURATION OF INTENTION TO STAY IN CURRENT LOCATION AND MAIN REASON TO CHOOSE CURRENT DISPLACEMENT LOCATION

HUMANITARIAN ASSISTANCE AND NEEDS

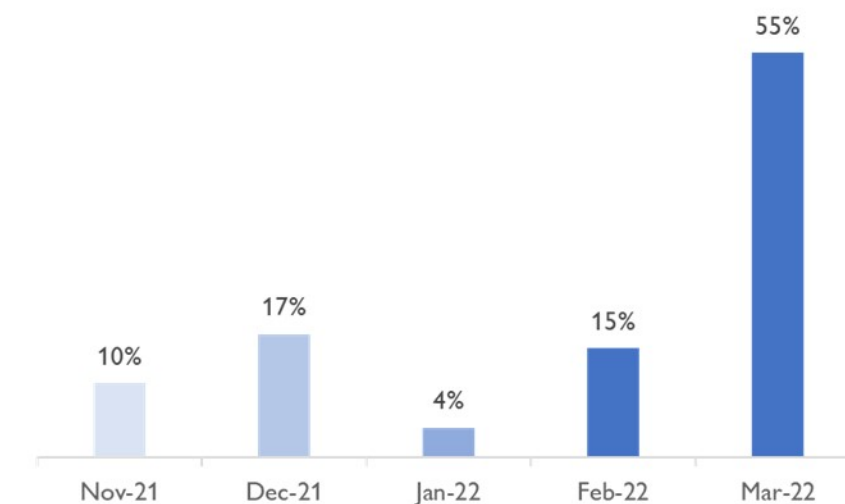


OF SETTLEMENTS REPORTING HUMANITARIAN AND/OR GOVERNMENT ACTORS PROVIDING HUMANITARIAN ASSISTANCE



% IDPS BY 3 MAIN REPORTED NEEDS IN DISPLACEMENT SETTLEMENTS

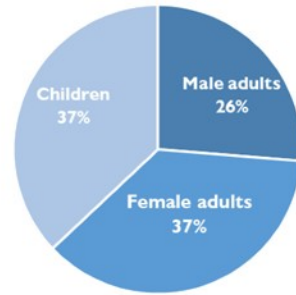
TIMELINE OF DISPLACEMENT



% IDPs PER MONTH OF DISPLACEMENT

IDP SITES - SUMMARY FIGURES

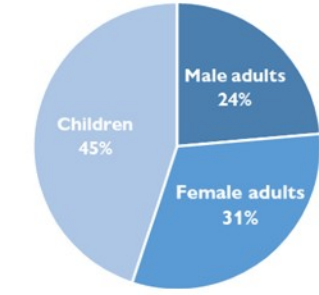
District main towns	# IDPs	# IDP sites
Baardheere	30,588	21
Belet Xaawo	8,808	4
Ceel Waaq	952	3
Doolow	1,803	5
Garbahaarey	1,972	7
Luuq	25,905	23
Total	70,028	63



IDPS'SEX AND AGE BREAKDOWN

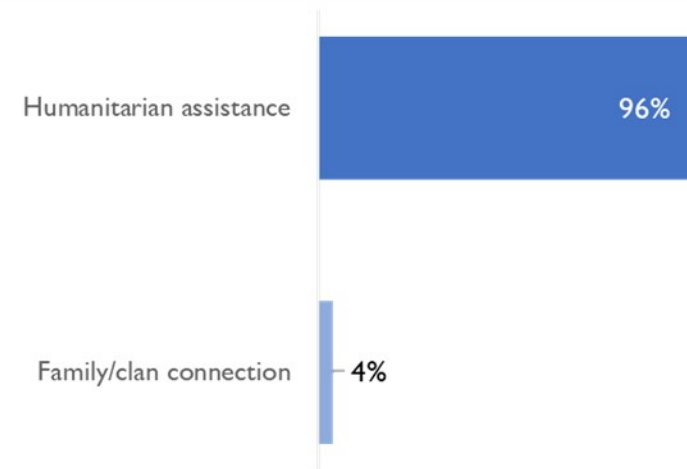
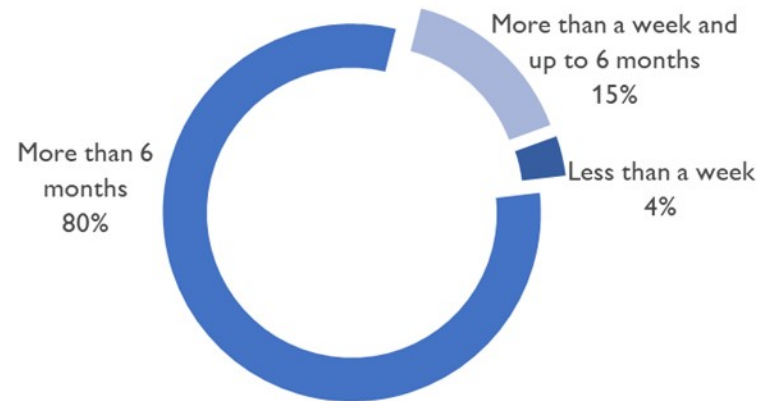
OUTSIDE IDP SITES - SUMMARY FIGURES

District main towns	# IDPs	# Outside IDP sites
Baardheere	27,298	17
Belet Xaawo	47,376	26
Ceel Waaq	8,302	36
Doolow	1,021	37
Garbahaarey	2,580	13
Luuq	8,363	22
Total	94,940	151



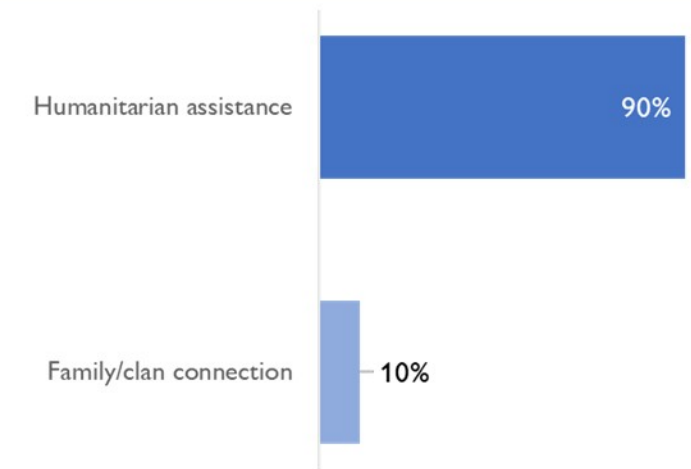
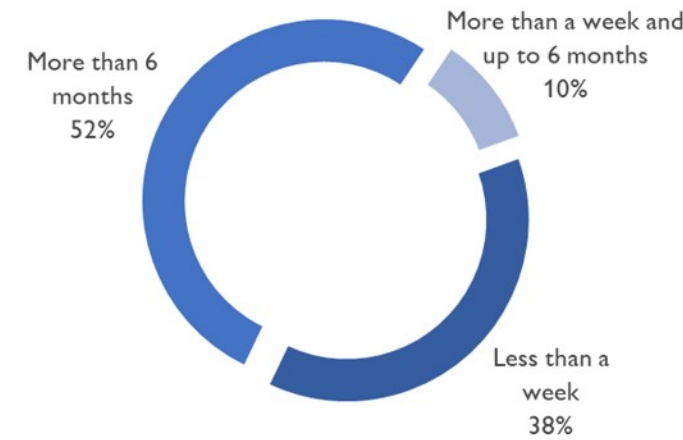
IDPS'SEX AND AGE BREAKDOWN

IDP SITES - EXPECTED DISPLACEMENT DURATION AND REASON FOR DISPLACEMENT LOCATION



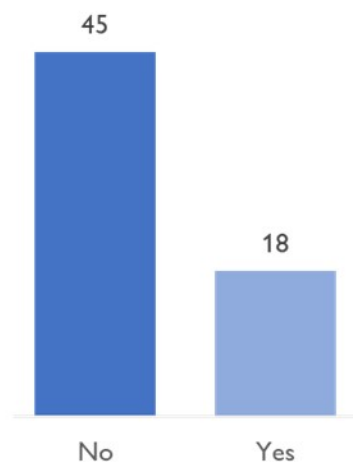
% IDPs BY DURATION OF INTENTION TO STAY IN CURRENT LOCATION AND MAIN REASON TO CHOOSE CURRENT DISPLACEMENT LOCATION

OUTSIDE IDP SITES - EXPECTED DISPLACEMENT DURATION AND REASON FOR DISPLACEMENT LOCATION



% IDPs BY DURATION OF INTENTION TO STAY IN CURRENT LOCATION AND MAIN REASON TO CHOOSE CURRENT DISPLACEMENT LOCATION

IDP SITES - HUMANITARIAN ASSISTANCE AND NEEDS

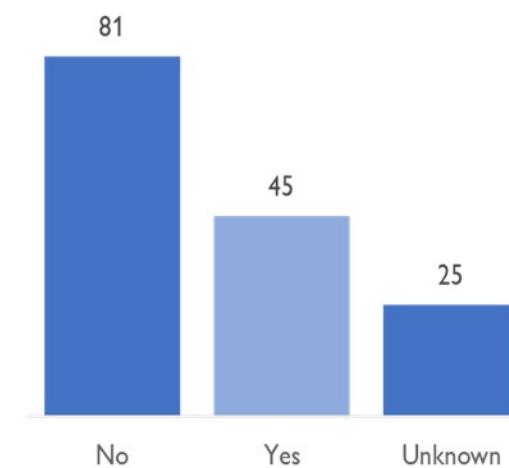


OF SETTLEMENTS REPORTING HUMANITARIAN AND/OR GOVERNMENT ACTORS PROVIDING HUMANITARIAN ASSISTANCE



% IDPS BY 3 MAIN REPORTED NEEDS IN DISPLACEMENT SETTLEMENTS

OUTSIDE IDP SITES - HUMANITARIAN ASSISTANCE AND NEEDS



OF SETTLEMENTS REPORTING HUMANITARIAN AND/OR GOVERNMENT ACTORS PROVIDING HUMANITARIAN ASSISTANCE



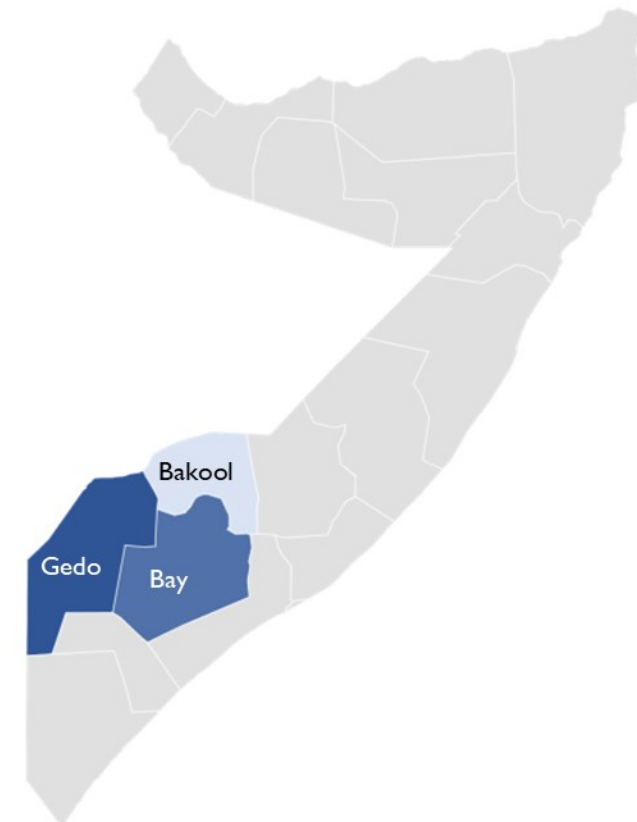
% IDPS BY 3 MAIN REPORTED NEEDS IN DISPLACEMENT SETTLEMENTS

POPULATION CHANGES BETWEEN ROUNDS BY DISTRICT

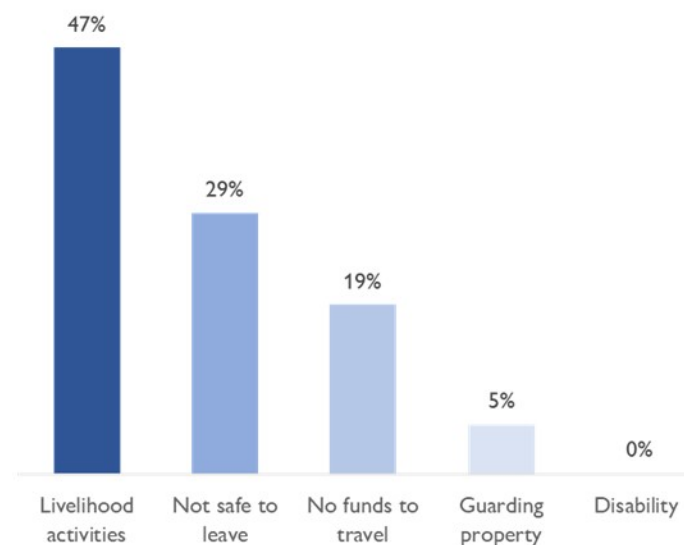
District main town	# IDPs	# Settlements
Pilot		
Baardheere	13,235	18
Belet Xaawo	16,017	11
Ceel Waaq	2,190	15
Doolow	1,001	15
Garbahaarey	621	7
Luuq	9,644	14
Total	42,708	80
Round 1		
Baardheere	34,638	30
Belet Xaawo	18,066	21
Ceel Waaq	4,326	23
Doolow	1,711	30
Garbahaarey	369	13
Luuq	22,938	17
Total	82,048	134
Round 2		
Baardheere	77,456	38
Belet Xaawo	46,186	30
Ceel Waaq	8,610	39
Doolow	1,507	37
Garbahaarey	1,582	20
Luuq	35,284	45
Total	170,625	209
Round 3		
Baardheere	58,255	37
Belet Xaawo	51,312	31
Ceel Waaq	8,682	39
Doolow	1,283	37
Garbahaarey	1,739	20
Luuq	35,438	45
Total	156,709	209
Round 4		
Baardheere	56,325	38
Belet Xaawo	55,692	31
Ceel Waaq	9,156	39
Doolow	2,352	39
Garbahaarey	2,024	20
Luuq	35,282	44
Grand Total	160,831	211
Round 5		
Baardheere	57,886	38
Belet Xaawo	56,184	30
Ceel Waaq	9,254	39
Doolow	2,824	42
Garbahaarey	4,552	19
Luuq	34,268	45
Total	164,968	213

INFORMATION ON THE COMMUNITIES OF ORIGIN

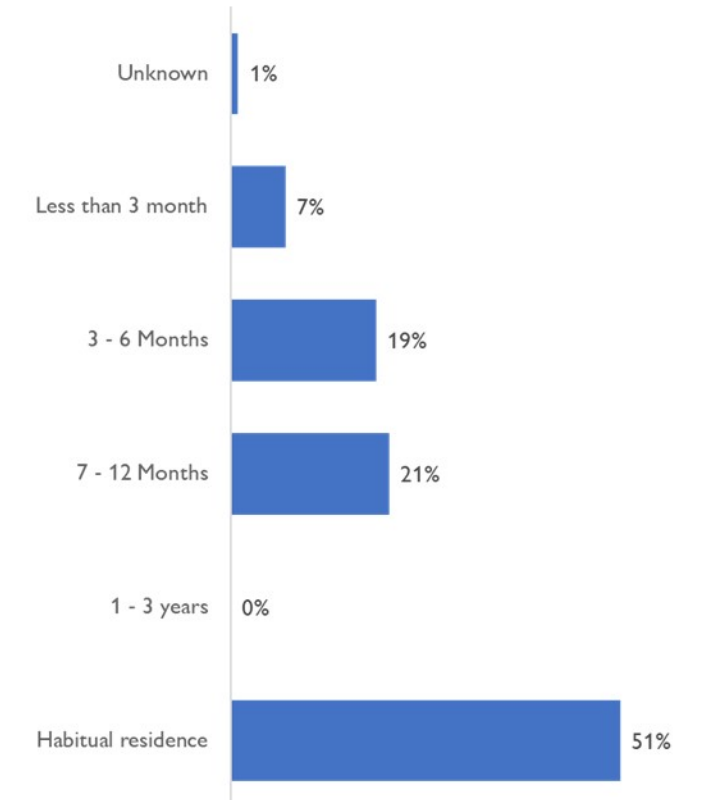
Region of origin	# ind. stayed behind
Bakool	1,700
Bay	27,469
Gedo	33,741



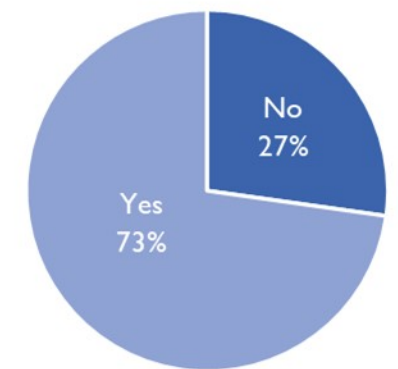
INDIVIDUALS WHO STAYED BEHIND IN THE IDP'S COMMUNITIES OF ORIGIN, BY REGION



% INDIVIDUALS BY REASON TO STAYING BEHIND IN THE IDP'S COMMUNITIES OF ORIGIN



% IDPS BY LENGTH OF STAY IN THE IDP'S COMMUNITIES OF ORIGIN



% KEY INFORMANTS WHO REPORTED THAT ALL THOSE WHO LIVED IN THE IDP'S COMMUNITIES OF ORIGIN FLED

CONTEXT AND METHODOLOGY

As the drought continues to worsen with displacement increasing in Somalia DTM is piloting an Emergency Trends Tracking (ETT) tool in Gedo region to monitor displacement trends and hotspots in support of operational planning.

Three failed consecutive rainy seasons have resulted in 90% of the country experiencing severe drought conditions. In February 2022, OCHA reports that 4.3 million individuals are affected by drought. During the 2017 drought, DTM Somalia conducted a country wide ETT and the data from that period indicated the highest numbers of displaced individuals were observed in Bay, Banadir and Gedo regions. Based on this and due to IOM's operational presence in Gedo region, DTM decided to deploy an ETT pilot in Gedo region.

ETT is a crisis-based tool that tracks sudden displacement triggered by specific events or emerging crises. The objective of ETT is to help prioritize humanitarian response and to enable partners to deliver rapid assistance. Based on previous drought induced displacement patterns, the humanitarian community expects that people will move from rural to urban areas in search of humanitarian services. Consequently, this pilot, which concentrates only on drought induced displacements, focuses on the main urban centers and surrounding villages for each district. The data is collected through Key Informant Interviews (KIIs) at the location level, from Saturday to Wednesday every week. All locations assessed are monitored each week.

LIMITATIONS

The data is collected through Key Informant Interviews (KIIs), consequently the findings should be considered as estimates. The data is also captured for the "majority of the people displaced within a location". For example, the place of origin assessed for the IDPs in one location, is the place of origin of the majority of these IDPs. The detailed information on all places of origin is not collected and reported.

The information provided is related to a specific event (ongoing drought) and does not provide an overview of all population movements within a location. Moreover, the exercise covers the main urban centres and surrounding areas in each district, consequently none of the districts have a full coverage. The GPS coordinates collected can be approximations and are not always exact locations.

MAPS DISCLAIMER AND LEGENDS

The maps in this report are for illustrative purposes only. Representations and the use of boundaries and geographical names on these maps may include errors and do not imply judgment of the legal status of a territory, nor official recognition or acceptance of these boundaries by IOM.

 Top displacement movements within districts

 Top displacement movements across regions

 Green dots represent rural settlements and red dots represent urban settlements

Definitions of settlement types:

Urban settlements: neighborhoods located in the main administrative town of each district.

Rural settlements: villages outside of cities and towns.

IDP sites: camp and camp-like settings hosting IDPs.