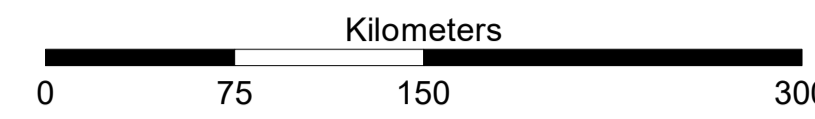


Population distribution as of DTM Round 5 (Jan. - March 2019) in soums with very high and high level of risk of Dzud under the EAP January 2020

1:3,000,000 1 cm = 30 km



<https://www.iom.int> | email: dtmsupport@iom.int

Source Data : ESRI, IOM DTM, IFRC DREF, National Emergency Management Agency, National Statistics Office of Mongolia, UNJLC

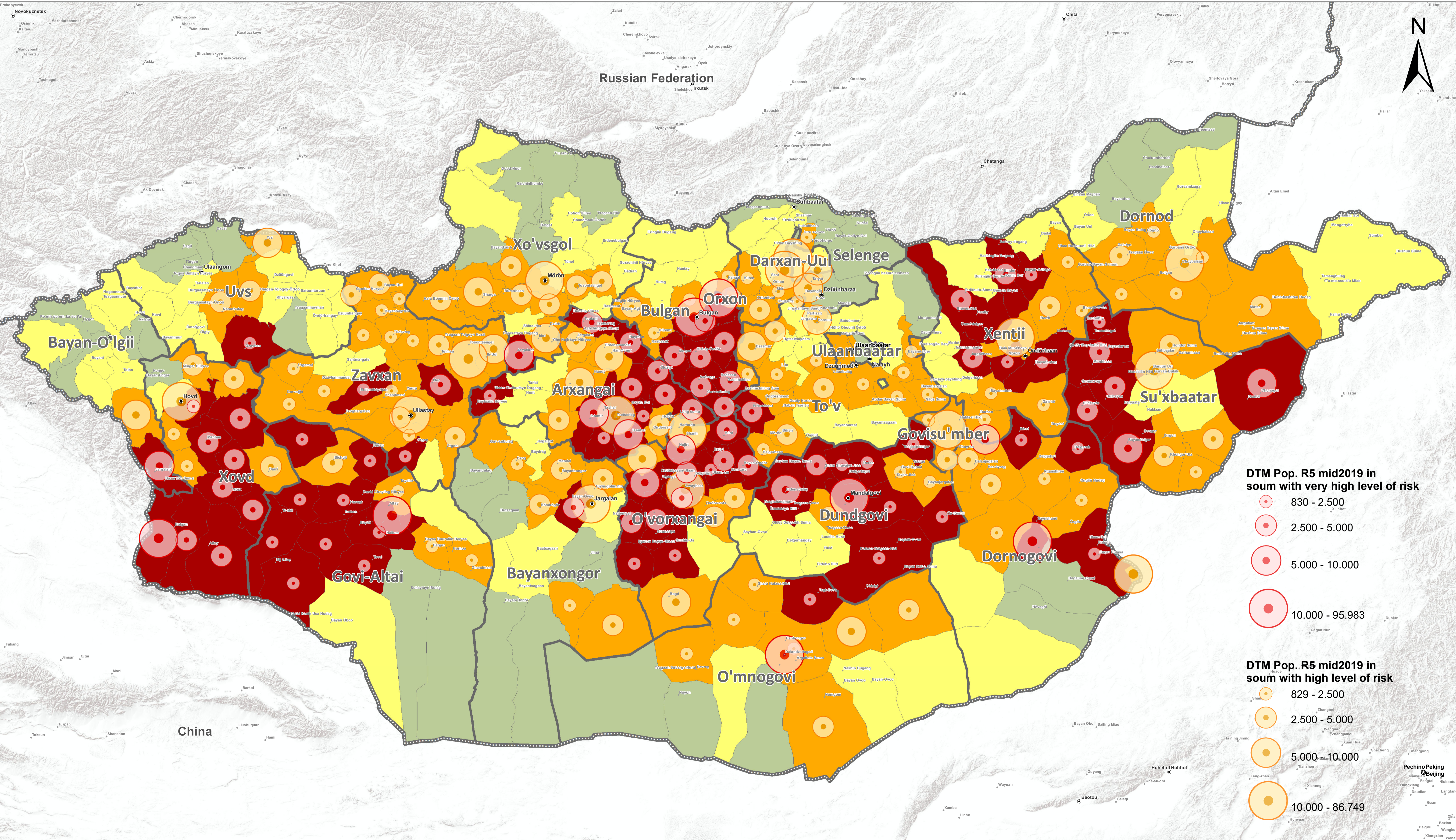
Map Production Date : 21 January 2020

Disclaimer : This map is for illustration purposes only. Names and boundaries on this map do not imply official endorsement or acceptance by IOM.

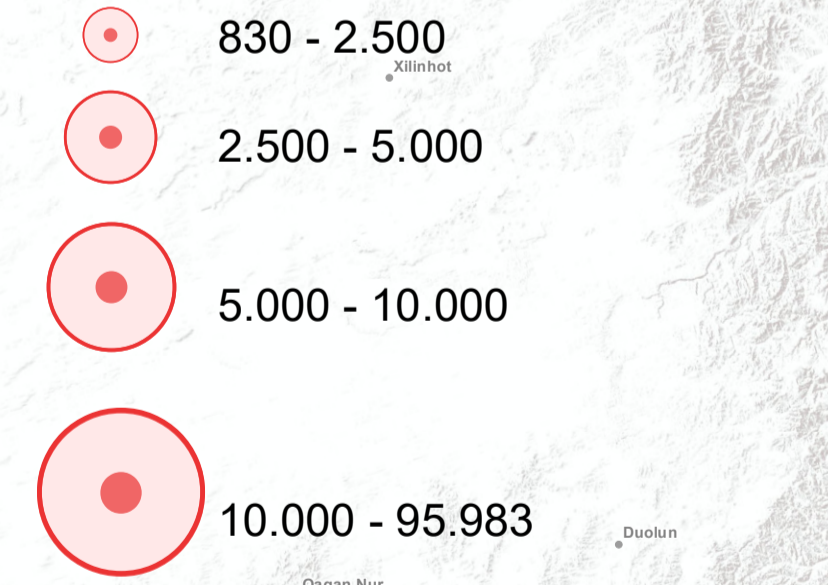
Dzud 2020 Risk level in soums

- Very high level of risk
- High level of risk
- Medium level of risk
- Low level of risk

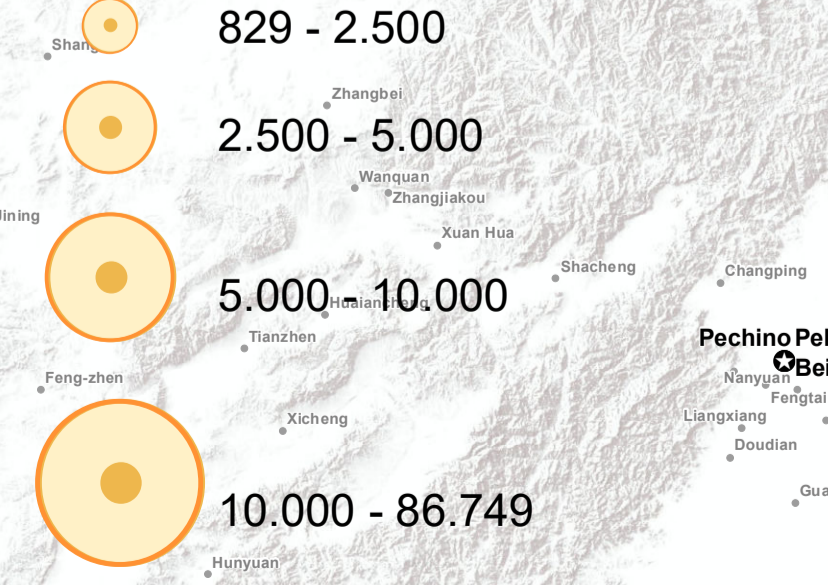
- ⊙ Country Capital
- Major City
- Intermediate City
- Country administrative boundaries
- Administrative Level 1



DTM Pop. R5 mid2019 in soum with very high level of risk



DTM Pop. R5 mid2019 in soum with high level of risk



Important note: DTM Round 5 (Jan - Mar 2019) was completed in 330 soums, but did not include data collection in Ulaanbaatar. This map therefore does not contain population numbers for Ulaanbaatar.