

KEY NUMBERS

46,092
observed
movements
in 2024

22,402
observed
movements
in February
2024

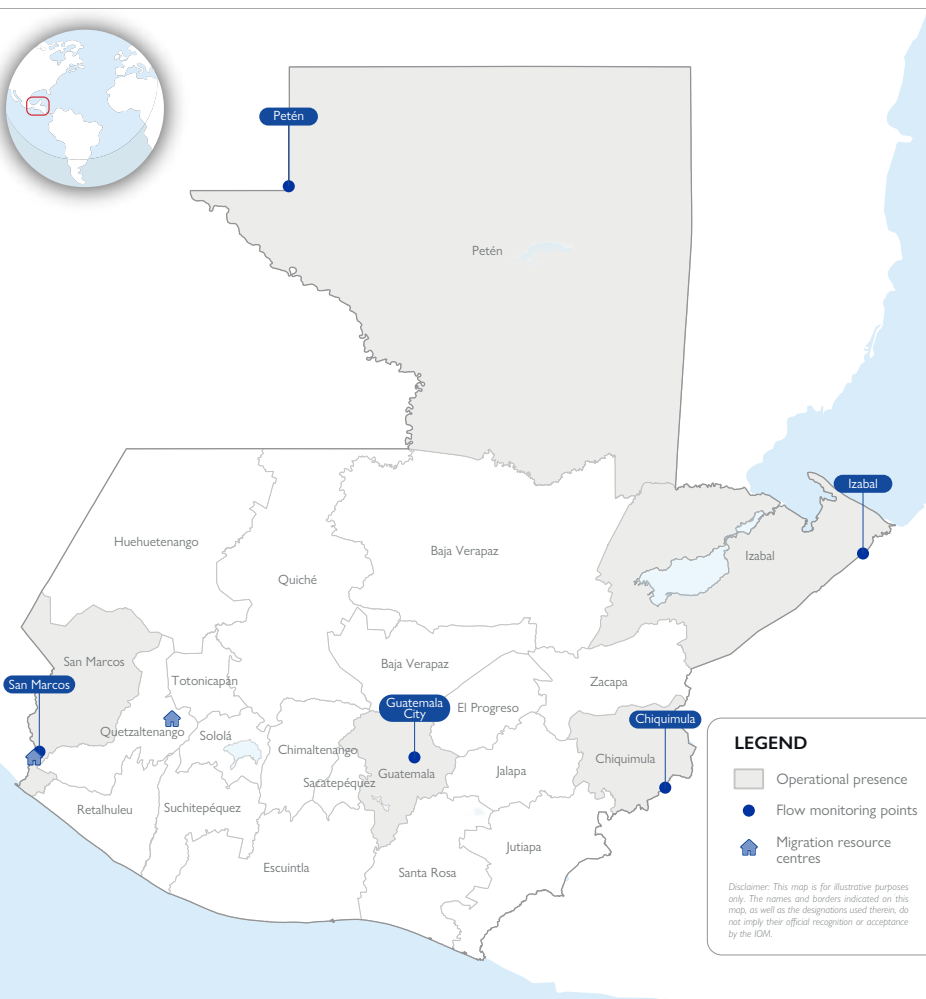
-6%
difference
from
January
2024

5
flow
monitoring
points

51% San Marcos
17% Chiquimula
11% Guatemala City
11% Petén
10% Izabal

964
surveyed
individuals
in 2024

400
surveyed
individuals
in February
2024

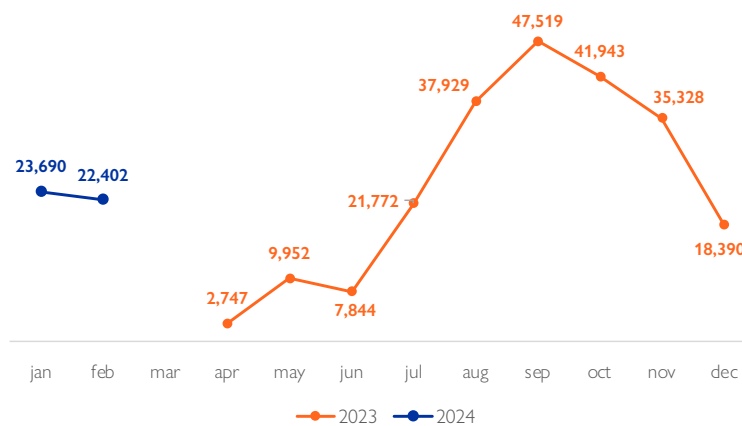


OVERVIEW

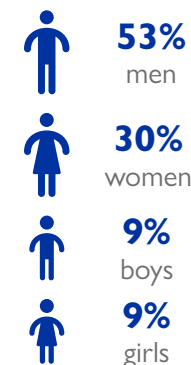
In February 2024, 22,402 movements were observed in Guatemala (18% children) and 400 individuals were surveyed.¹ The number of observed movements decreased by 6 per cent from January 2024 (23,690) due to operational constraints in data collection. More than half of surveyed individuals originated from the Bolivarian Republic of Venezuela (63%). The main intended destination was the United States of America (90%).

Since 2022, migratory flows through the Latin America and Caribbean region have increased significantly, with record levels of persons crossing the perilous jungle of the Darién National Park from Colombia into Panama. The in-transit flows tracked in Guatemala have mirrored these regional migration trends.

MONTHLY COUNT IN 2023 AND 2024



DEMOGRAPHIC PROFILE

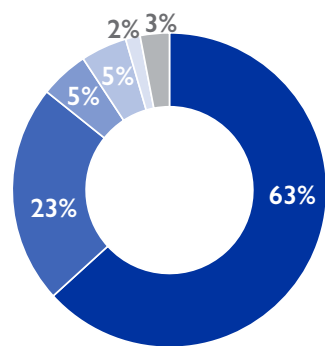


MEANS OF TRANSPORT



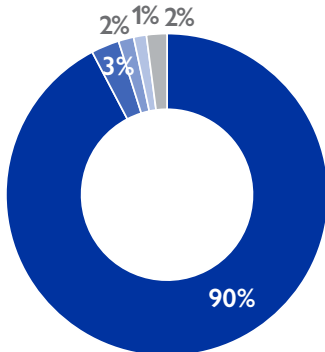
¹ Data on observed movements (count) are presented on the first page and data on surveyed individuals (survey) on the second page. Percentages may not add up to 100% due to rounding.

NATIONALITIES



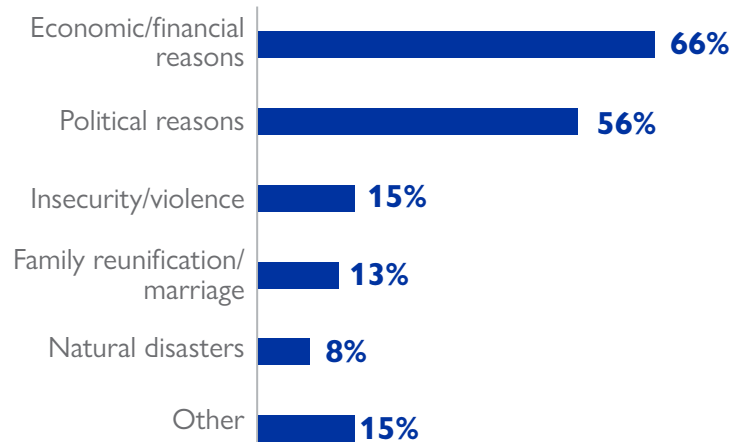
- Bolivarian Republic of Venezuela
- Honduras
- Colombia
- Ecuador
- El Salvador
- Other

COUNTRY OF DESTINATION



- United States of America
- Mexico
- Canada
- Guatemala
- Other

REASONS FOR TRAVEL

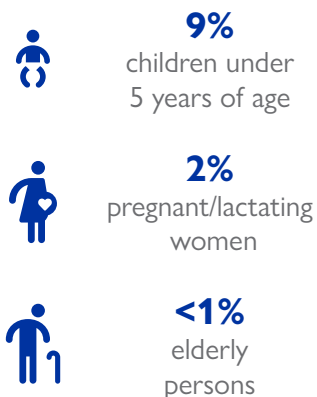


Note: multiple option question.

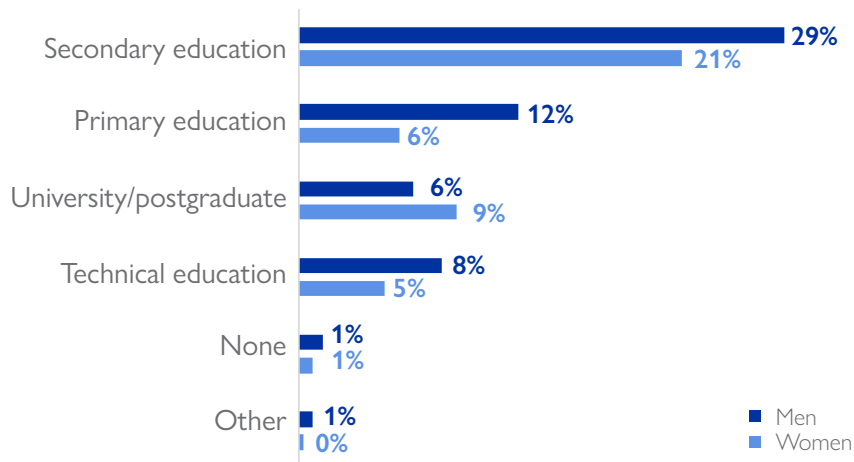
MAIN NEEDS



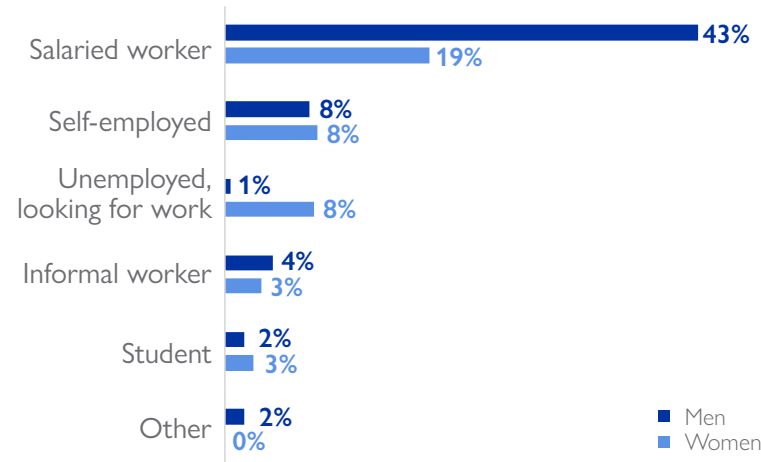
MAIN VULNERABILITIES



EDUCATION LEVEL



EMPLOYMENT STATUS AT COUNTRY OF ORIGIN



METHODOLOGY

The Displacement Tracking Matrix (DTM) is a system to gather and analyse data to disseminate critical multi layered information on the mobility, vulnerabilities, and needs of displaced and mobile populations that enables decision makers and responders to provide these populations with better context specific assistance. The objective of flow monitoring is to collect information on the volume and basic characteristics of populations transiting during observation hours at selected flow monitoring points. In response to the increase in migratory flows through Central America and given the need to know the characteristics and mobility patterns of people transiting through Guatemala, IOM implemented a flow monitoring count and survey based on the DTM methodology in April 2023. These exercises were initiated in five different transit points in the Departments of San Marcos, Chiquimula, Petén, Izabal and Guatemala City. Data collected represents the situation at specific points of transit during selected hours of observations and provides only a partial view of the volume and characteristics of population flows transiting through the flow monitoring points. This tool does not intend to provide a total number of all transiting populations, but rather to estimate volume and characteristics of population flows transiting through an observed point.

CONTACT

✉ iomguatemala@iom.int
 🌐 <https://dtm.iom.int/guatemala>

🌐 <https://infounitnca.iom.int/>
 📧 @OIMGuatemala

📺 @OIMGuatemala

WITH SUPPORT FROM

