

REGIONAL MOBILITY MAPPING

WEST AND CENTRAL AFRICA
JANUARY 2022



International Organization for Migration (IOM)
The UN Migration Agency



REGIONAL MOBILITY MAPPING

WEST AND CENTRAL AFRICA JANUARY 2022

Permission is required to reproduce any part of this publication. Permission to be freely granted to educational or non-profit organizations.

The opinions expressed do not necessarily reflect the views of the International Organization for Migration (IOM). The designations employed, and the presentation of material within the report do not imply the expression of any opinion whatsoever on the part of IOM concerning the legal status of any country, territory city or area, or of its authorities, or concerning its frontiers or boundaries. This document was produced with the financial assistance of the European Union, the Ministry of Foreign Affairs of the Netherlands, the US Government and the United Kingdom's Department for International Development (DFID). The views expressed herein can in no way be taken to reflect the official opinion of the donors.

© International Organization for Migration (IOM) July 2021

IOM is committed to the principle that humane and orderly migration benefits migrants and society. As an intergovernmental organization, IOM acts with its partners in the international community to assist in meeting the operational challenges of migration, advance understanding of migration issues, encourage social and economic development through migration, and uphold the human dignity and well-being of migrants.

Disclaimer: The maps in this report are for illustrative purposes only. Representations and the use of boundaries and geographical names on these maps may include errors and do not imply judgment of the legal status of a territory, nor official recognition or acceptance of these boundaries by IOM.

For feedback, please contact:
RO Dakar, Regional Data Hub – rodakar-dataresearch@iom.int

FUNDING SUPPORT

This report is produced by DTM Regional Support team for West and Central Africa through funding support from:



This project is funded by the European Union



UKaid
from the British people



USAID
FROM THE AMERICAN PEOPLE



MiRAC
MIGRATION RESOURCE ALLOCATION COMMITTEE

INTRODUCTION

ABOUT THIS REPORT

The development and implementation of policies and programmes in West and Central Africa promoting safe, orderly and humane migration require a better understanding of human mobility in the region.

Human mobility in the region take many different forms. Transhumance, seasonal migration conducted during the harvesting season, travel during religious festivities, tourism, economic migration to North Africa and Europe, the search for employment in the mining industry, forced displacements due to conflict, natural disasters or climate-related migration, rural exodus, are all examples of movements observed in West and Central Africa and show the many faceted nature of mobility in the region.

This document is an attempt to provide a dynamic and regularly updated portrait of mobility within, from and to West and Central Africa region for Migration (IOM), the United Nations Department of Economic and Social Affairs (UNDESA) and the United Nations High Commissioner for Refugees (UNHCR).

The maps contained in this document are not only meant to inform on ongoing mobility patterns, but also provide information to support direct programming (protection of migrants, management of transhumance flows, support to safe returns of displaced people) and policy.

DATA SOURCES

Data sources for the information displayed in this document are provided at the bottom of each page. When reference is made to IOM data, the data was collected from: 1) Flow Monitoring, 2) Mobility Tracking, 3) Interviews with individuals who benefited from voluntary returns and reintegration programs (AVRR), 4) Search and Rescue operations, 5) Missing Migrants Project, 6) Transhumance Tracking Tool

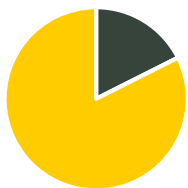
Further information on the data collection methodologies and on the activities referenced throughout the report is available in the following documents:

- Regional Data Hub Factsheet
- Displacement Factsheet
- Migration Factsheet
- Transhumance Factsheet
- Missing Migrants Project Factsheet
- Migrant Protection and Assistance/Assisted Voluntary Return and Reintegration Factsheet
- COVID-19 Mobility Restriction Monitoring Factsheet
- Data Protection Factsheet

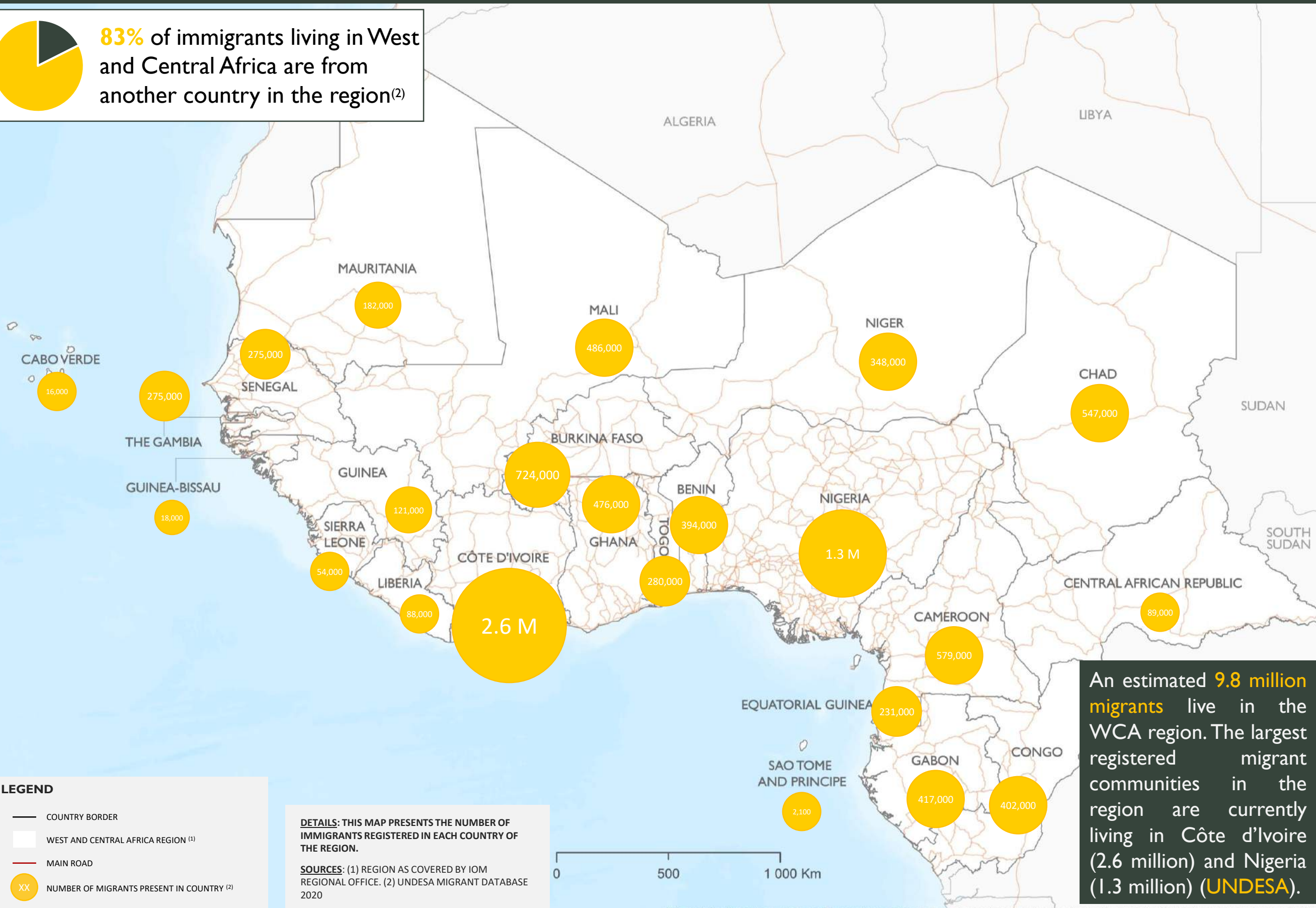
Other data presented in this document is provided by the Ministries of the Interior of Spain, Italy and Greece, the United Nations High Commissioner for Refugees (UNHCR), the United Nations Department of Economic and Social Affairs (UNDESA) and the Internal Displacement Monitoring Centre (IDMC).

CONTENT

- INTERNATIONAL MIGRANTS ◦ *Page 4*
- EMIGRATION FROM WCA ◦ *Page 5*
- MIGRATION FLOWS ◦ *Page 6*
- MIGRATION CORRIDORS ◦ *Page 7*
- LABOUR MOBILITY ◦ *Page 8*
- TRANSHUMANCE ◦ *Page 9*
- TRANSHUMANCE II ◦ *Page 10*
- INTER-REGIONAL ROUTES ◦ *Page 11*
- ARRIVALS TO EUROPE I ◦ *Page 12*
- ARRIVALS TO EUROPE II ◦ *Page 13*
- TRAVELLER PROFILES ◦ *Page 14*
- MISSING MIGRANTS ◦ *Page 15*
- COVID-19 AND MOBILITY ◦ *Page 16*
- REGIONS OF ORIGIN ◦ *Page 17*
- CONFLICT & INTERNAL DISPLACEMENT ◦ *Page 18*
- DISASTERS & INTERNAL DISPLACEMENT ◦ *Page 19*
- RETURN ASSISTANCE BY IOM ◦ *Page 20*
- IOM PRESENCE IN THE REGION ◦ *Page 21*
- NOTE ON METHODOLOGY I ◦ *Page 22*
- NOTE ON METHODOLOGY II ◦ *Page 23*



83% of immigrants living in West and Central Africa are from another country in the region⁽²⁾



LEGEND

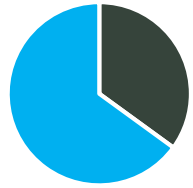
- COUNTRY BORDER
- WEST AND CENTRAL AFRICA REGION ⁽¹⁾
- MAIN ROAD
- XX NUMBER OF MIGRANTS PRESENT IN COUNTRY ⁽²⁾

DETAILS: THIS MAP PRESENTS THE NUMBER OF IMMIGRANTS REGISTERED IN EACH COUNTRY OF THE REGION.

SOURCES: (1) REGION AS COVERED BY IOM REGIONAL OFFICE. (2) UNDESA MIGRANT DATABASE 2020

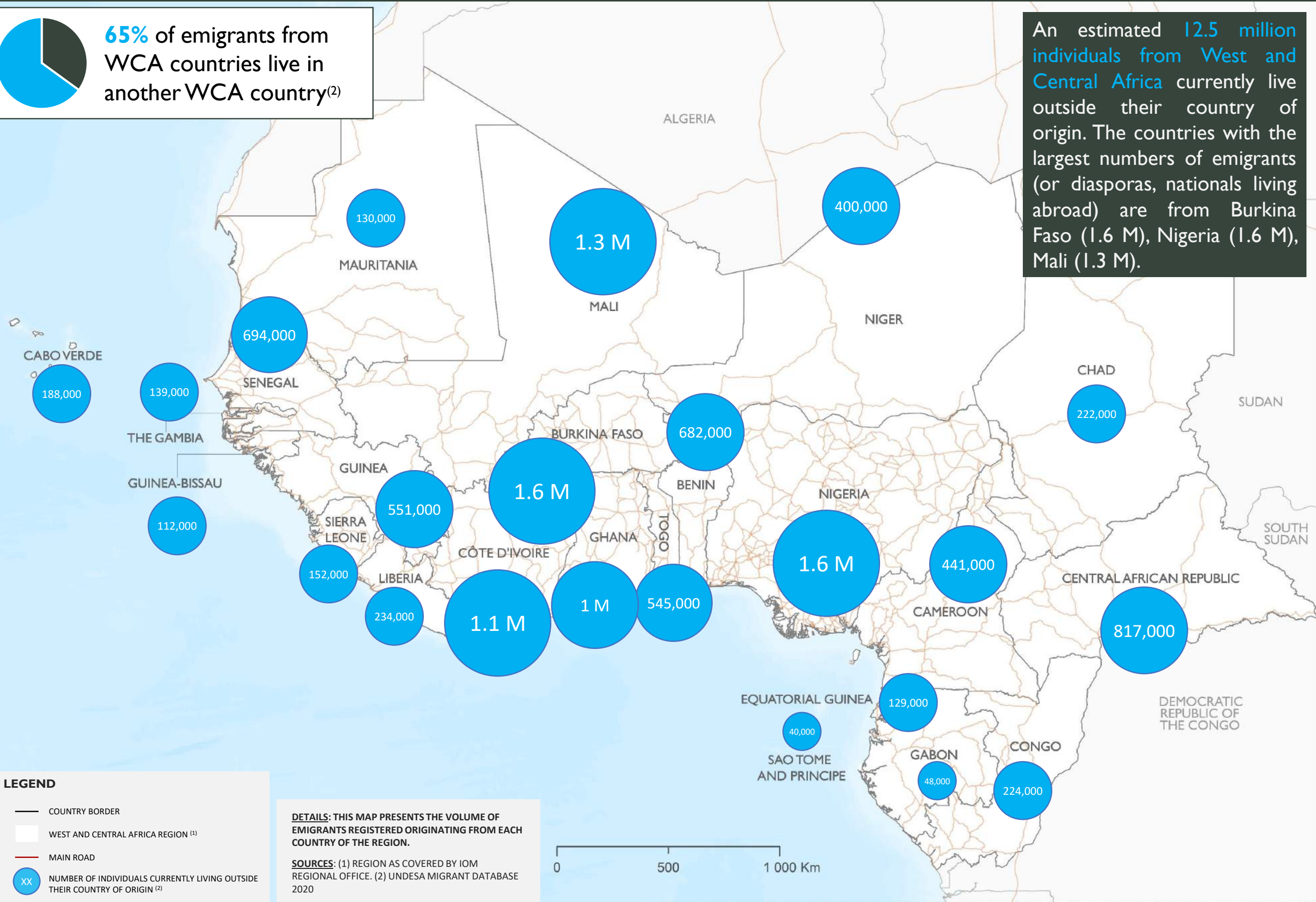
An estimated **9.8 million migrants** live in the WCA region. The largest registered migrant communities in the region are currently living in Côte d'Ivoire (2.6 million) and Nigeria (1.3 million) (**UNDESA**).

This map is for illustration purposes only. The boundaries and names shown and the designations used on this map do not imply official endorsement or acceptance by IOM



65% of emigrants from WCA countries live in another WCA country⁽²⁾

An estimated **12.5 million** individuals from West and Central Africa currently live outside their country of origin. The countries with the largest numbers of emigrants (or diasporas, nationals living abroad) are from Burkina Faso (1.6 M), Nigeria (1.6 M), Mali (1.3 M).



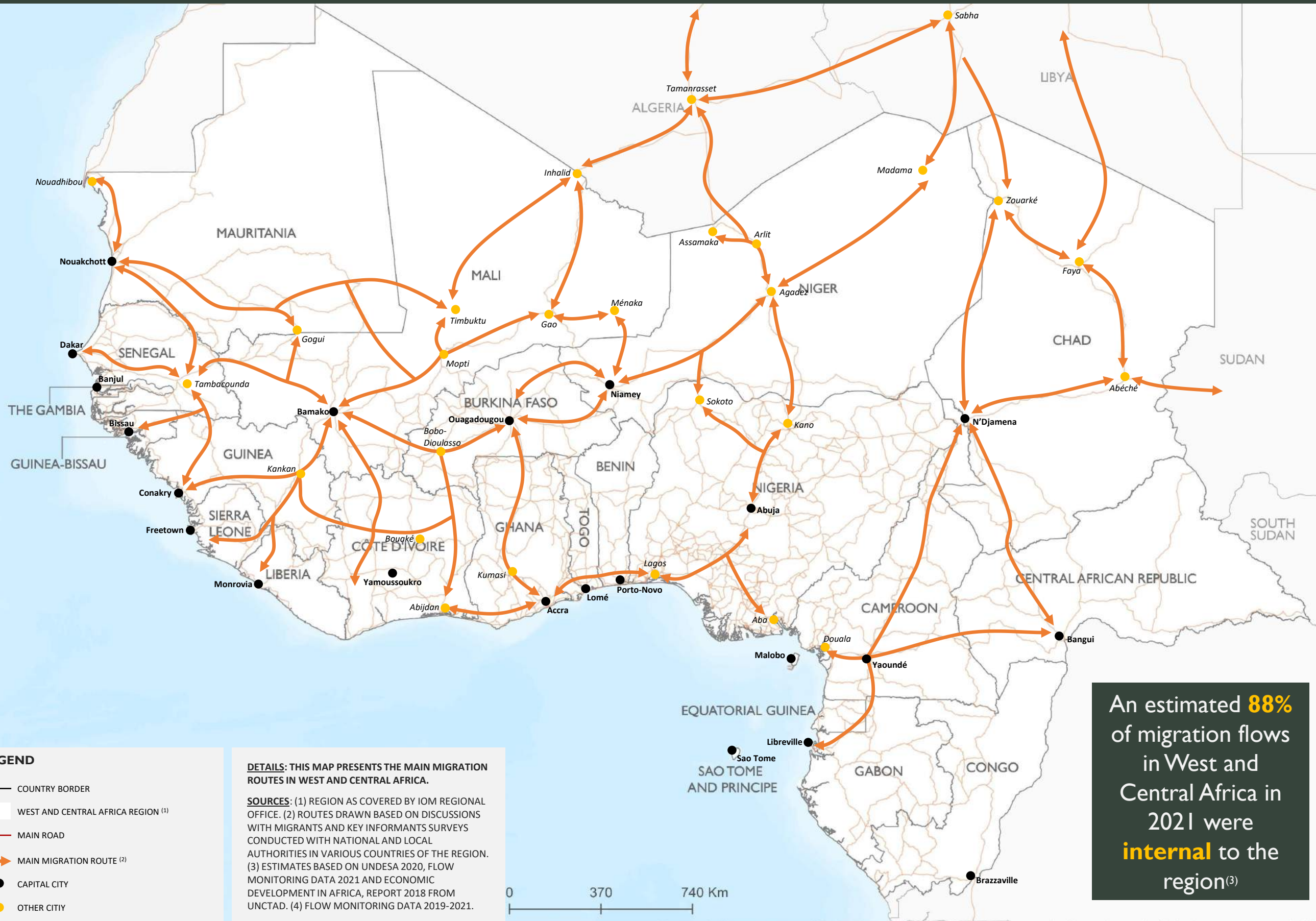
LEGEND

- COUNTRY BORDER
- WEST AND CENTRAL AFRICA REGION ⁽¹⁾
- MAIN ROAD
- XX NUMBER OF INDIVIDUALS CURRENTLY LIVING OUTSIDE THEIR COUNTRY OF ORIGIN ⁽²⁾

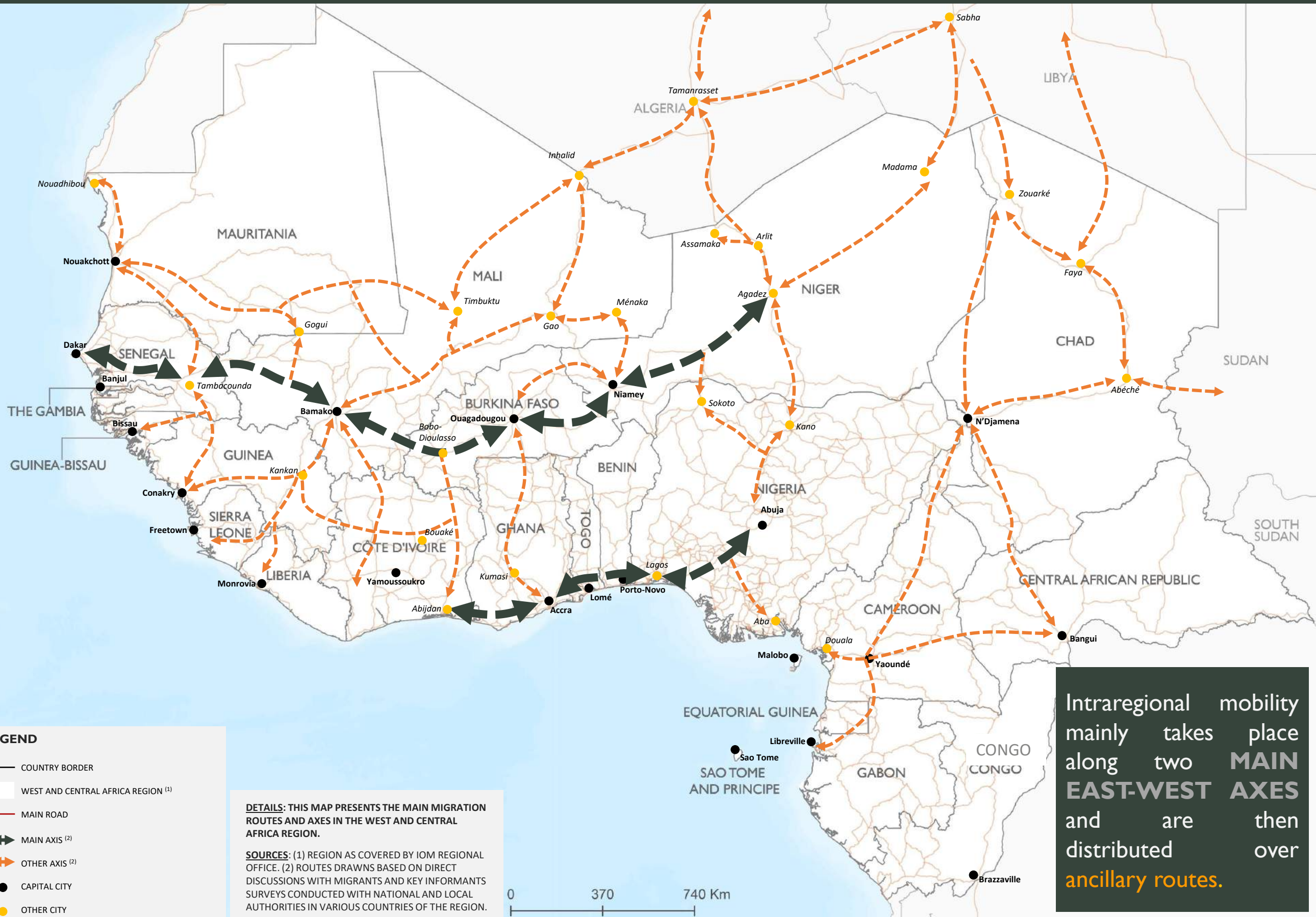
DETAILS: THIS MAP PRESENTS THE VOLUME OF EMIGRANTS REGISTERED ORIGINATING FROM EACH COUNTRY OF THE REGION.

SOURCES: (1) REGION AS COVERED BY IOM REGIONAL OFFICE. (2) UNDESA MIGRANT DATABASE 2020





An estimated **88%** of migration flows in West and Central Africa in 2021 were **internal** to the region⁽³⁾

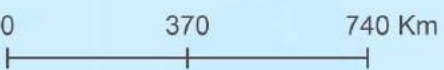


LEGEND

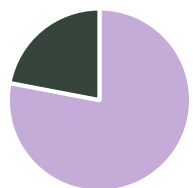
- COUNTRY BORDER
- ◻ WEST AND CENTRAL AFRICA REGION ⁽¹⁾
- MAIN ROAD
- ↔ MAIN AXIS ⁽²⁾
- ⇄ OTHER AXIS ⁽²⁾
- CAPITAL CITY
- OTHER CITY

DETAILS: THIS MAP PRESENTS THE MAIN MIGRATION ROUTES AND AXES IN THE WEST AND CENTRAL AFRICA REGION.

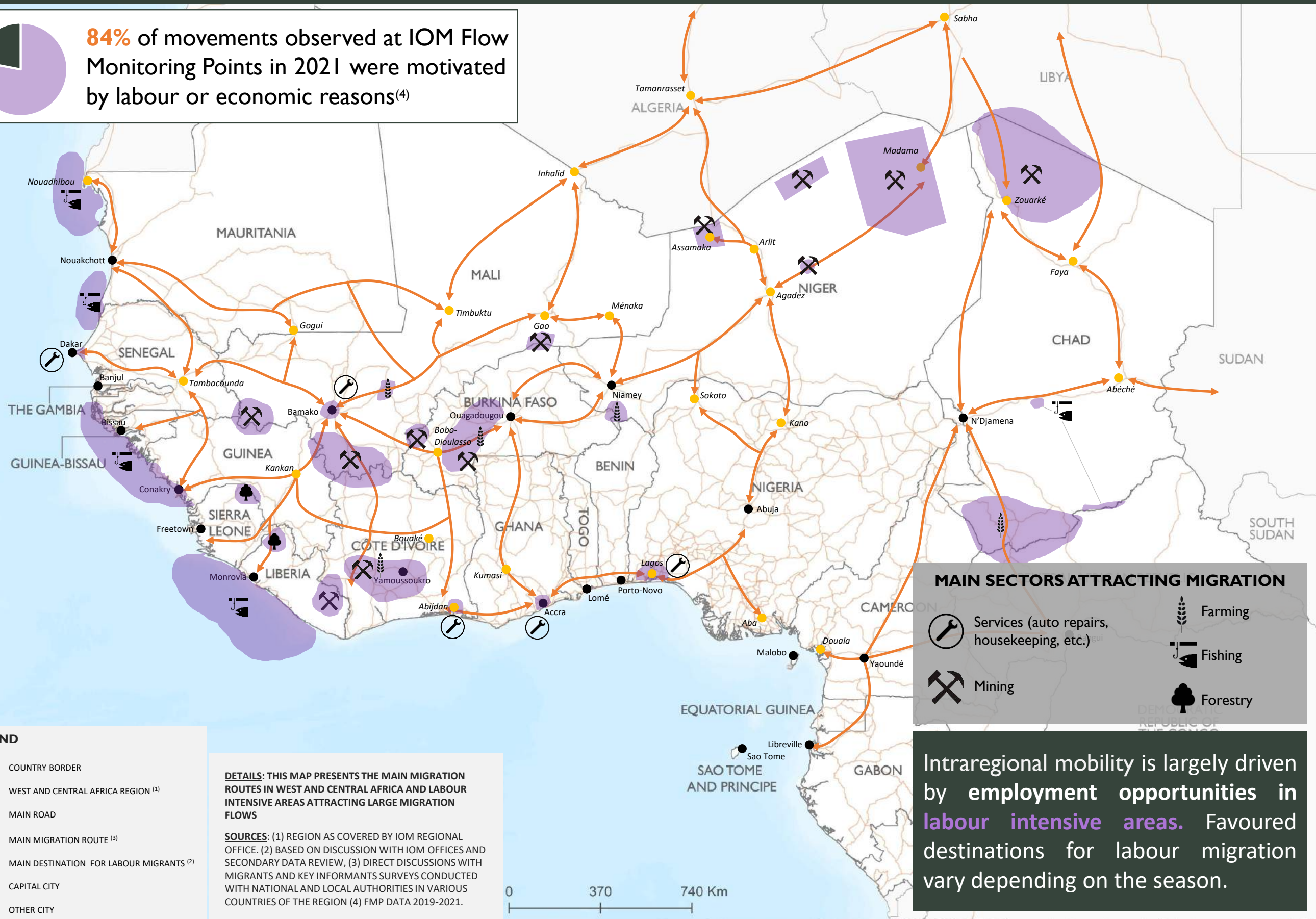
SOURCES: (1) REGION AS COVERED BY IOM REGIONAL OFFICE. (2) ROUTES DRAWNS BASED ON DIRECT DISCUSSIONS WITH MIGRANTS AND KEY INFORMANTS SURVEYS CONDUCTED WITH NATIONAL AND LOCAL AUTHORITIES IN VARIOUS COUNTRIES OF THE REGION.



Intraregional mobility mainly takes place along two **MAIN EAST-WEST AXES** and are then distributed over **ancillary routes.**



84% of movements observed at IOM Flow Monitoring Points in 2021 were motivated by labour or economic reasons⁽⁴⁾



MAIN SECTORS ATTRACTING MIGRATION

- Services (auto repairs, housekeeping, etc.)
- Mining
- Farming
- Fishing
- Forestry

Intraregional mobility is largely driven by employment opportunities in labour intensive areas. Favoured destinations for labour migration vary depending on the season.

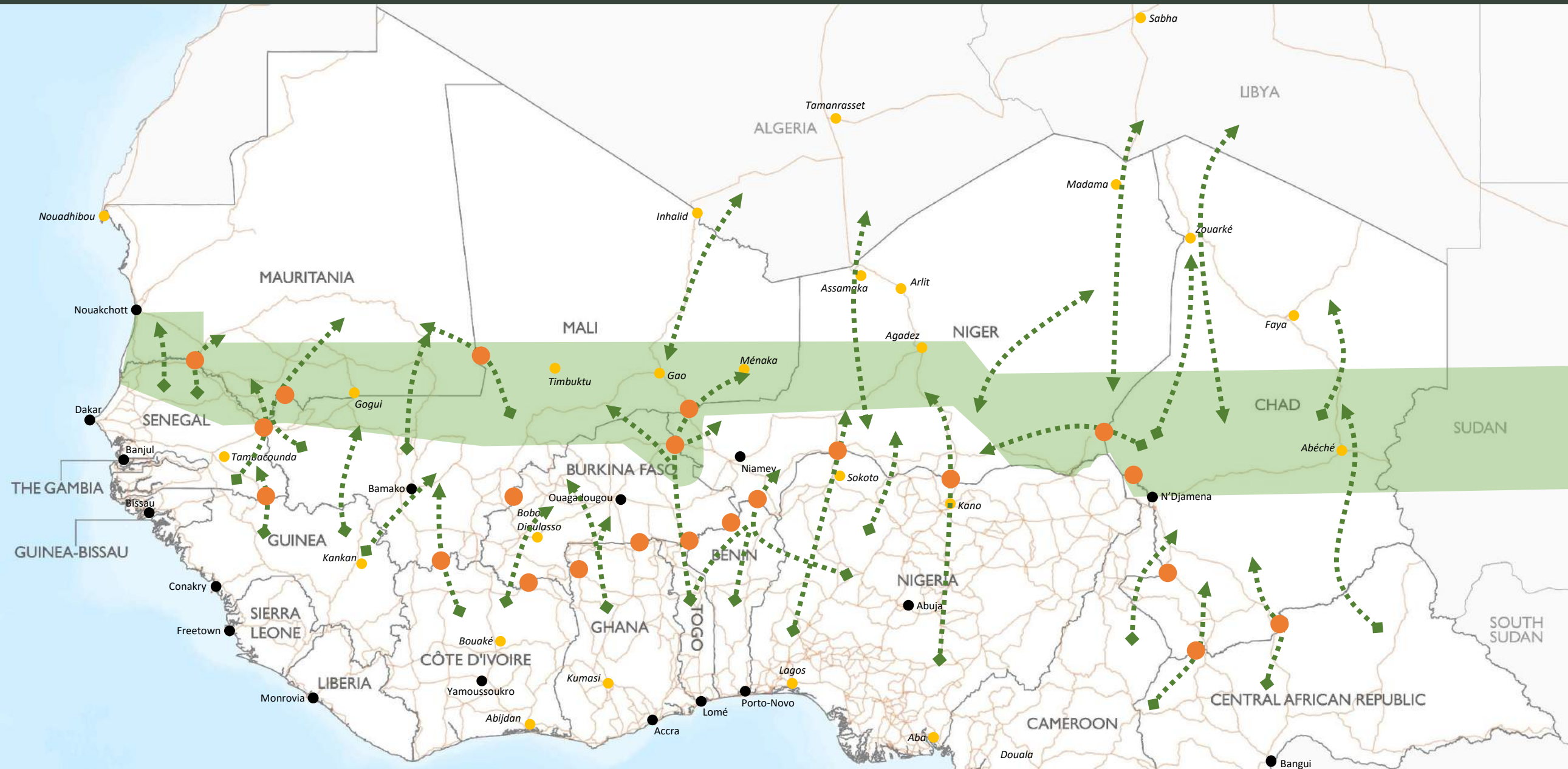
LEGEND

- COUNTRY BORDER
- WEST AND CENTRAL AFRICA REGION ⁽¹⁾
- MAIN ROAD
- MAIN MIGRATION ROUTE ⁽³⁾
- MAIN DESTINATION FOR LABOUR MIGRANTS ⁽²⁾
- CAPITAL CITY
- OTHER CITY

DETAILS: THIS MAP PRESENTS THE MAIN MIGRATION ROUTES IN WEST AND CENTRAL AFRICA AND LABOUR INTENSIVE AREAS ATTRACTING LARGE MIGRATION FLOWS

SOURCES: (1) REGION AS COVERED BY IOM REGIONAL OFFICE. (2) BASED ON DISCUSSION WITH IOM OFFICES AND SECONDARY DATA REVIEW, (3) DIRECT DISCUSSIONS WITH MIGRANTS AND KEY INFORMANTS SURVEYS CONDUCTED WITH NATIONAL AND LOCAL AUTHORITIES IN VARIOUS COUNTRIES OF THE REGION (4) FMP DATA 2019-2021.





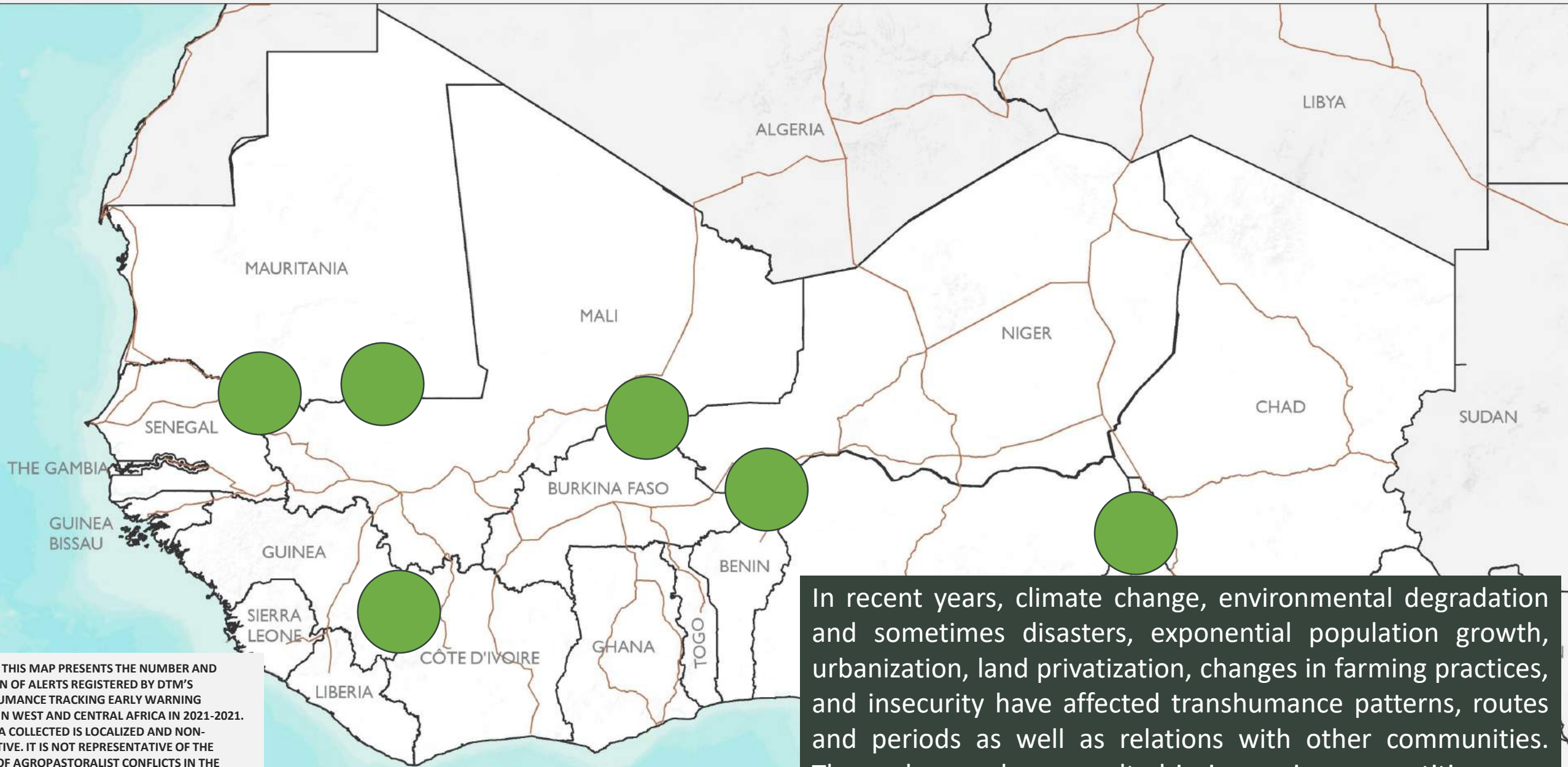
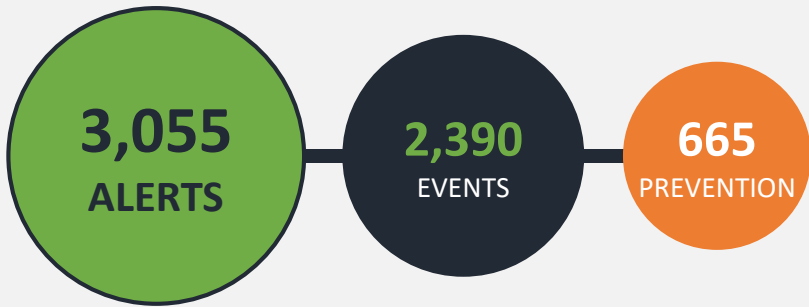
LEGEND

- COUNTRY BORDER
- WEST AND CENTRAL AFRICA REGION ⁽¹⁾
- PASTORAL ZONE ⁽²⁾
- TRANSBOUNDARY TRANSHUMANCE ROUTE ⁽²⁾
- ◇ DIRECTION DURING DRY SEASON ⁽²⁾
- ▶ DIRECTION DURING WET SEASON ⁽²⁾
- KEY TRANSIT POINT FOR TRANSHUMANT HERDERS ⁽³⁾
- CAPITAL CITY
- OTHER CITY

DETAILS: THIS MAP PRESENTS THE MAIN TRANSHUMANCE AND NOMADIC ROUTES IN THE WEST AND CENTRAL AFRICA REGION

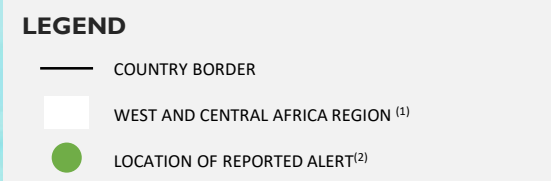
SOURCES: (1) REGION AS COVERED BY IOM REGIONAL OFFICE. (2) ROUTES ARE TAKEN FROM FAO-CIRAD, SYSTEME D'INFORMATON SUR LE PASTORALISME AU SAHEL, 2012 AND IOM TRANSHUMANCE TRACKING TOOL (BENIN, BURKINA FASO, CHAD, CAR, CÔTE D'IVOIRE, MALI, MAURITANIA, NIGER, TOGO). (3) TRANSHUMANCE TRACKING TOOL 2021

Transhumance, a form of pastoralism which sees herders and their livestock migrate on a seasonal basis between complementary ecological areas, from areas with scarce grazing lands and water sources to areas with more abundant pastures and water, is a common occupation across West and Central Africa which contributes significantly to human mobility in the region. The main transhumance routes link between Sahelian countries and coastal countries.



DETAILS: THIS MAP PRESENTS THE NUMBER AND LOCATION OF ALERTS REGISTERED BY DTM'S TRANSHUMANCE TRACKING EARLY WARNING SYSTEM IN WEST AND CENTRAL AFRICA IN 2021-2021. THE DATA COLLECTED IS LOCALIZED AND NON-EXHAUSTIVE. IT IS NOT REPRESENTATIVE OF THE EXTENT OF AGROPASTORALIST CONFLICTS IN THE REGION.

SOURCES: (1) REGION AS COVERED BY IOM REGIONAL OFFICE. (2) DATA COLLECTED USING THE TTT EARLY WARNING TOOL IN MAURITANIA, MALI, BENIN, CAMEROON AND BURKINA FASO AND SHOWING THE NUMBER AND TYPE OF ALERTS RECORDED THROUGH THE TTT'S EARLY WARNING SYSTEM

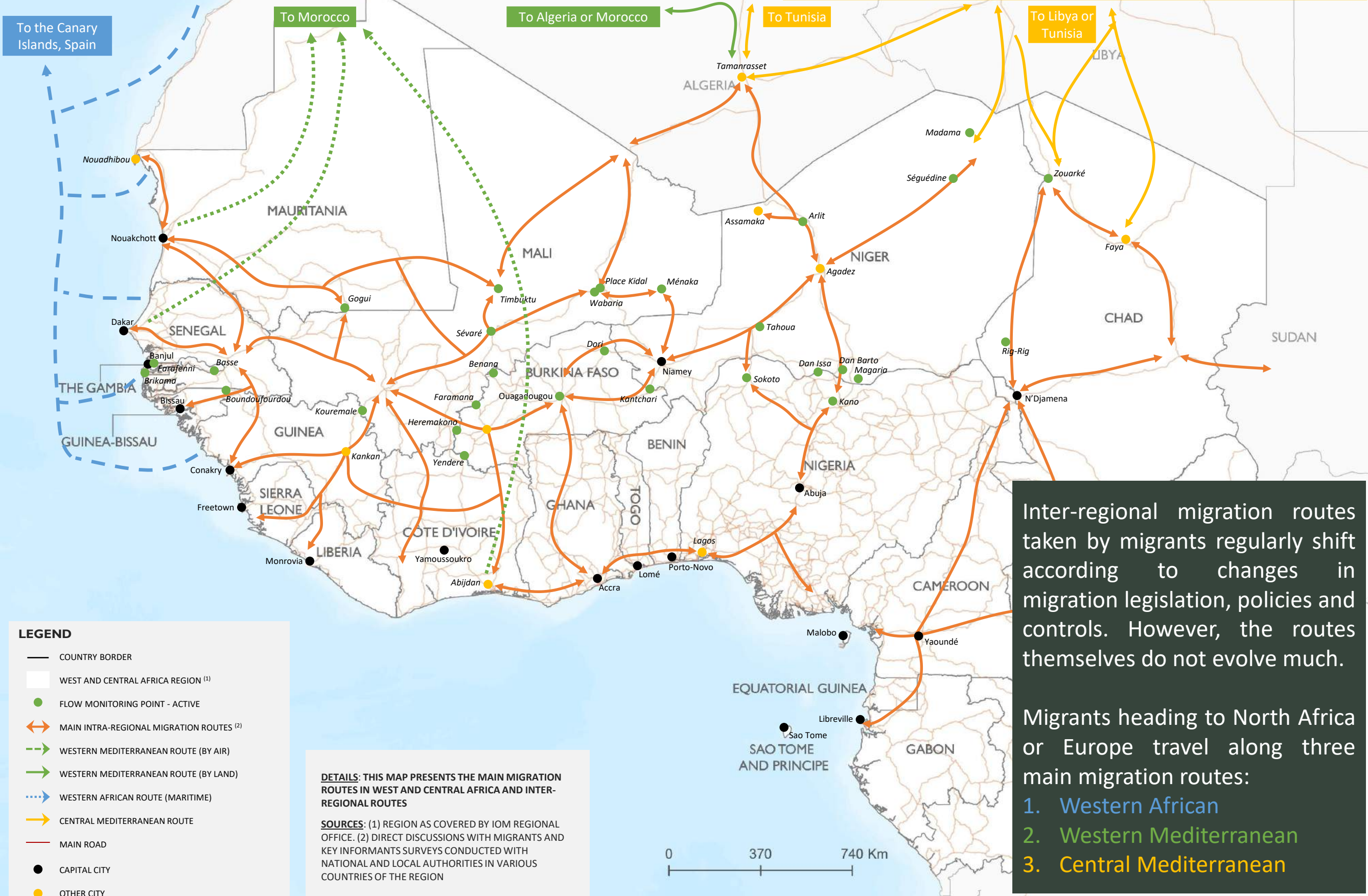


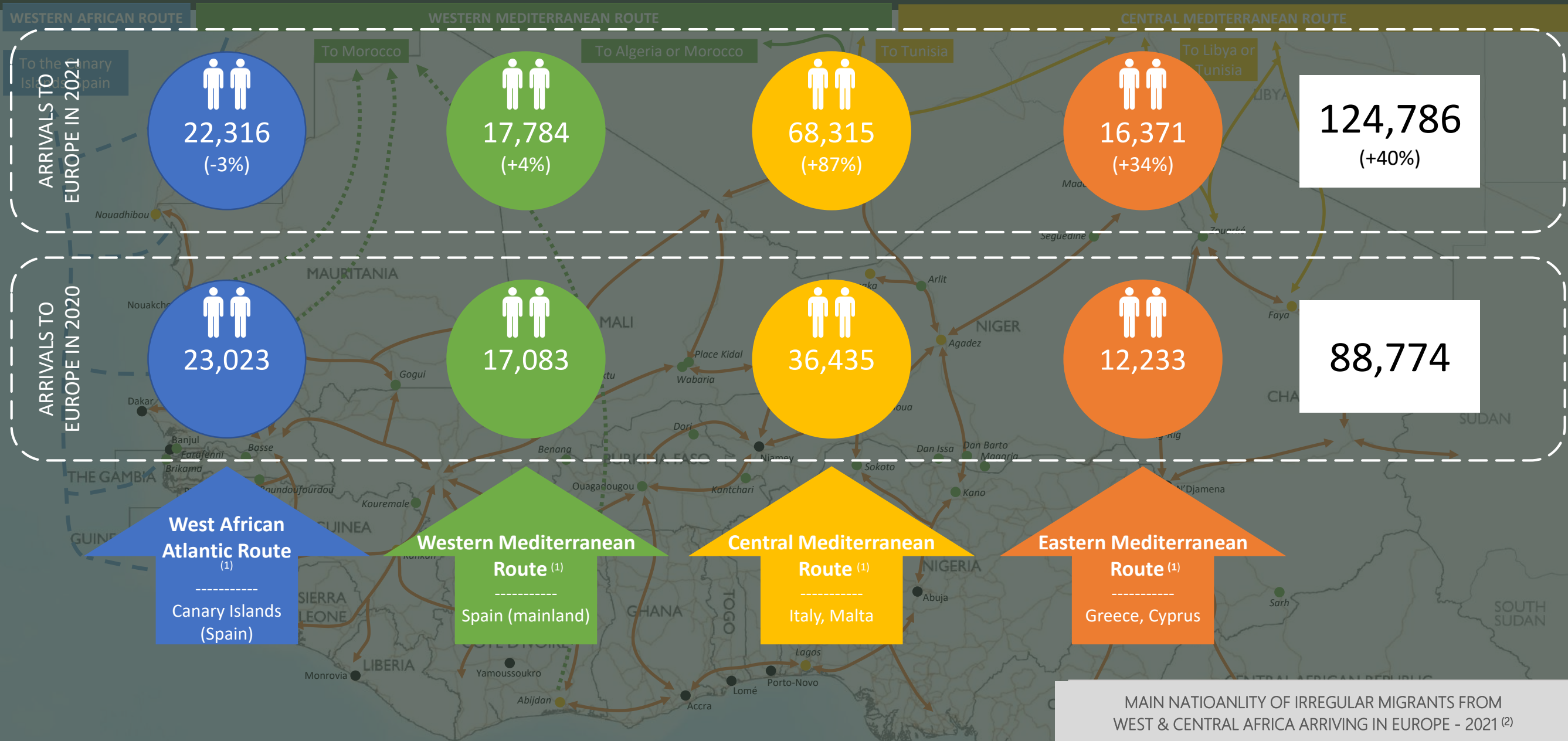
In recent years, climate change, environmental degradation and sometimes disasters, exponential population growth, urbanization, land privatization, changes in farming practices, and insecurity have affected transhumance patterns, routes and periods as well as relations with other communities. These changes have resulted in increasing competition over natural resources and have exacerbated tensions, generating at times deadly conflicts between transhumant herders and farmers.

WESTERN AFRICAN ROUTE

WESTERN MEDITERRANEAN ROUTE

CENTRAL MEDITERRANEAN ROUTE





- LEGEND**
- COUNTRY BORDER
 - WEST AND CENTRAL AFRICA REGION (1)
 - FLOW MONITORING POINT - ACTIVE
 - MAIN INTRA-REGIONAL MIGRATION ROUTES (2)
 - WESTERN MEDITERRANEAN ROUTE (BY AIR)
 - WESTERN MEDITERRANEAN ROUTE (BY LAND)
 - WESTERN AFRICAN ROUTE (MARITIME)
 - CENTRAL MEDITERRANEAN ROUTE
 - MAIN ROAD
 - CAPITAL CITY
 - OTHER CITY

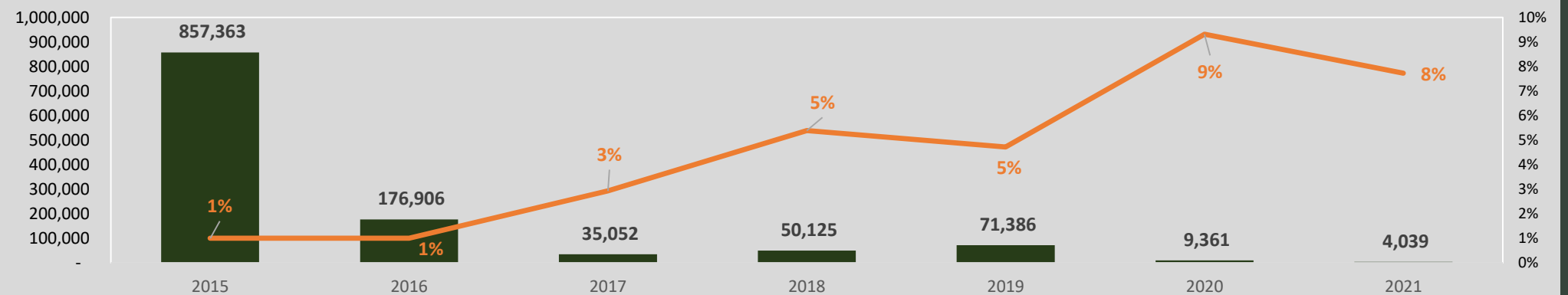
In 2021, an estimated **124,786** migrants arrived in Italy, Spain, Greece and other countries (Malta, Cyprus) by sea and land irregularly. In the 1st semester of 2021, **49,171** individuals arrived in Europe.

MAIN NATIONALITY OF IRREGULAR MIGRANTS FROM WEST & CENTRAL AFRICA ARRIVING IN EUROPE - 2021 (2)

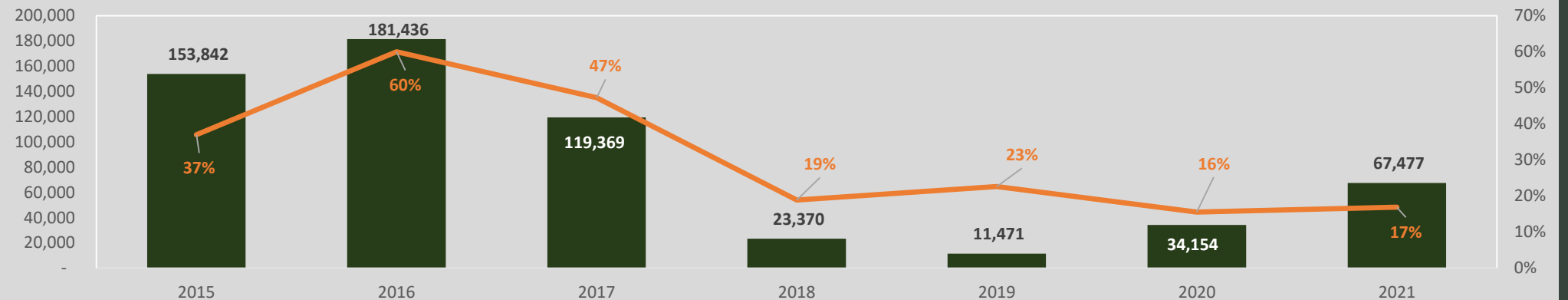
SUB-SAHARAN UNIDENTIFIED	15,077
CÔTE D'IVOIRE	4,000
GUINEA	2,682
MALI	1,735
CAMEROON	1,030
NIGERIA	851
THE GAMBIA	478
SENEGAL	309
BURKINA FASO	295
GHANA	289
OTHER	722

0 370 740 Km

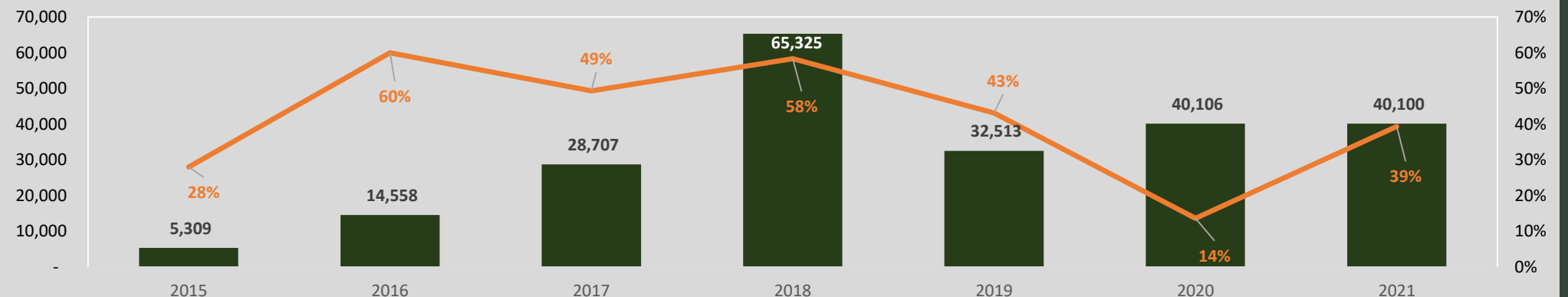
TOTAL ARRIVALS IN GREECE AND PROPORTION OF WCA NATIONALS



TOTAL ARRIVALS IN ITALY AND PROPORTION OF WCA NATIONALS



TOTAL ARRIVALS IN SPAIN AND PROPORTION OF WCA NATIONALS



LEGEND:

- XX # OF ARRIVALS
- x% % OF ARRIVALS OF WCA NATIONALS

DETAILS: THIS PAGE PRESENTS THE NUMBERS OF ARRIVALS TO EUROPE BY MAIN COUNTRY OF ARRIVAL (GREECE, ITALY, SPAIN), YEAR, AND PROPORTION OF WEST AND CENTRAL AFRICAN NATIONALS.

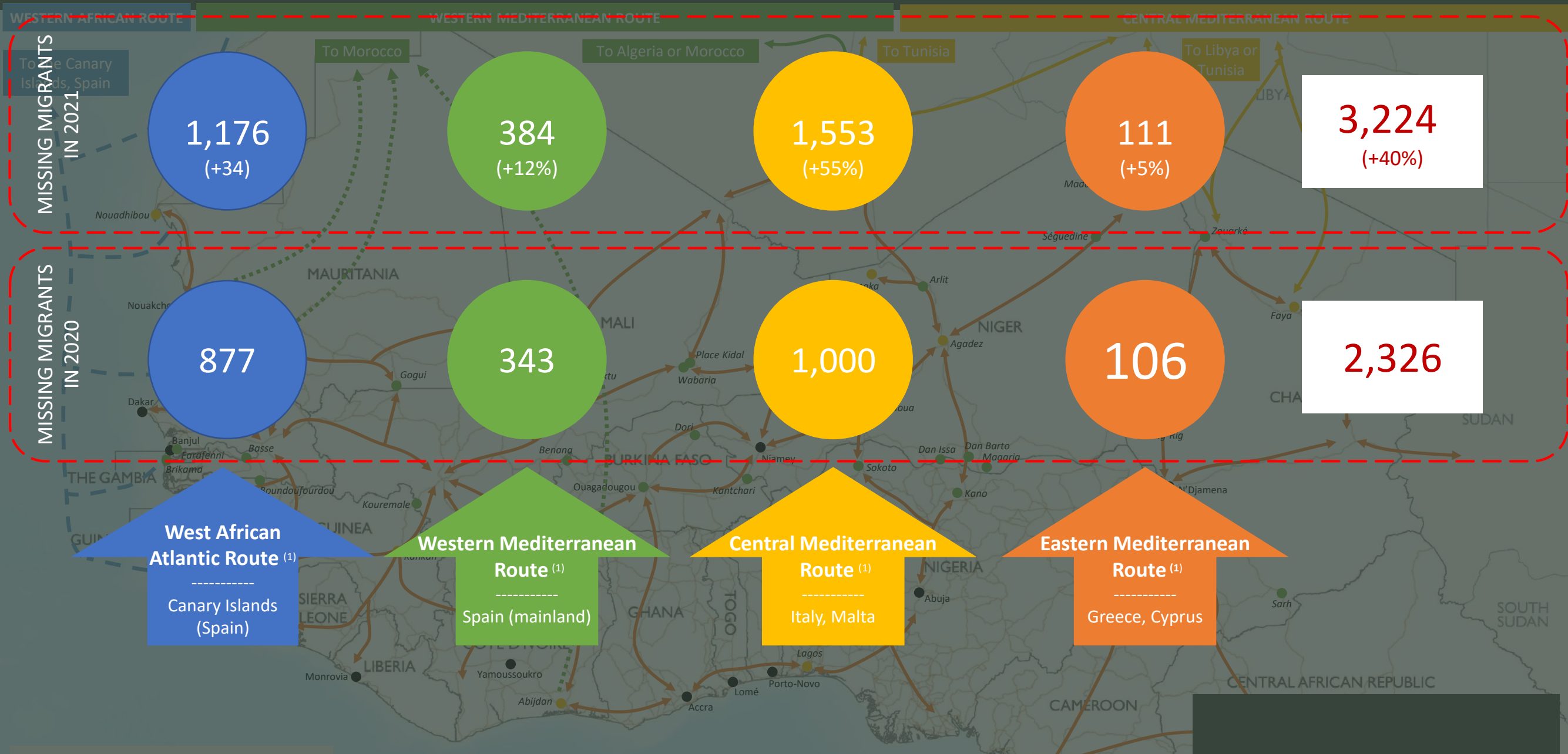
SOURCES: Ministries of the Interior of Spain, Italy and Greece; IOM and UNHCR data.

Migrant and refugee arrivals to Europe have changed significantly between 2015 and 2021. In 2015, an estimated 857,363 migrants and refugees reached Greece, with only 1% originating from West and Central Africa (WCA). The share of migrants from WCA amongst arrivals to Greece then steadily increased, reaching 5% in 2018, and to 8% in 2021. Arrivals of WCA nationals in Italy slowly decrease in 2020-2021 (respectively 16% and 17%). The share of WCA nationals amongst migrant and refugee arrivals to Spain witnessed some fluctuations between 2015 and 2021, and witnessed a sharp decrease between 2017 (60% of all arrivals in Spain, the highest observed in the 2015-2021 time period) and 2021 (39%). The drop in the share of WCA nationals arriving in Spain between 2019 and 2020 is partially explained by the lack of nationality data for October-December 2020. For January-December 2021, irregular arrivals in Italy saw an increase significantly compared to 2020. The 2021 arrivals have already more than doubled the total number of irregular migrant arrivals to Italy in 2020.

BY INTENDED DESTINATION

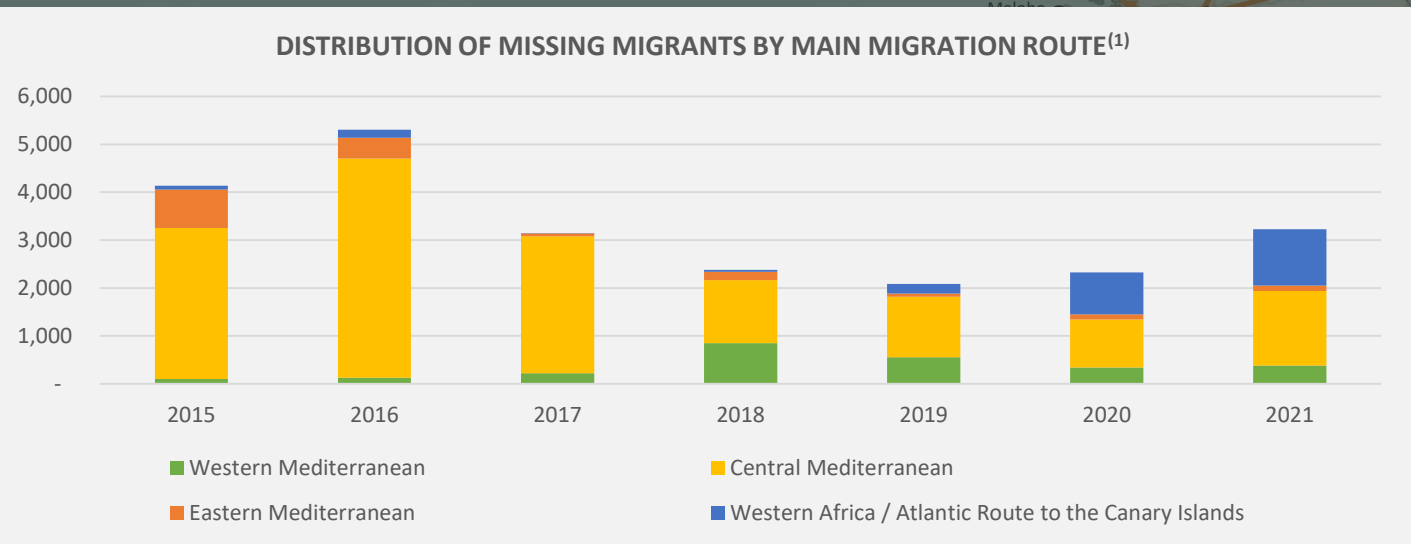


Travellers moving within West and Central Africa, headed for North Africa, and migrating to Europe showcase significant differences in age, marital status, education level and employment status prior to travel (in their country of habitual residence). The unemployment rate of travellers also varies according to the nature of the movements and the intended destination: migration to a country in West and Central Africa is more likely to be conducted in response to concrete job opportunities than migration to Europe or North Africa. *The profile of travellers (individuals crossing IOM Flow Monitoring Points) by intended destination presented on this page is based on data collected during Flow Monitoring Surveys conducted with over 47,787 travellers across the region between January and December 2020. Further information on methodology is available at the end of this document.*



DETAILS: THIS VISUAL PRESENTS THE NUMBERS OF DEAD AND MISSING MIGRANTS RECORDED ALONG THE FOUR MAIN MIGRATIONS ROUTES IN 2021 AND COMPARED WITH 2020.

SOURCES: (1) MISSING MIGRANT PROJECT DATA FOR 2020 AND 2021, GLOBAL MIGRATION DATA AND ANALYSIS CENTER, IOM.

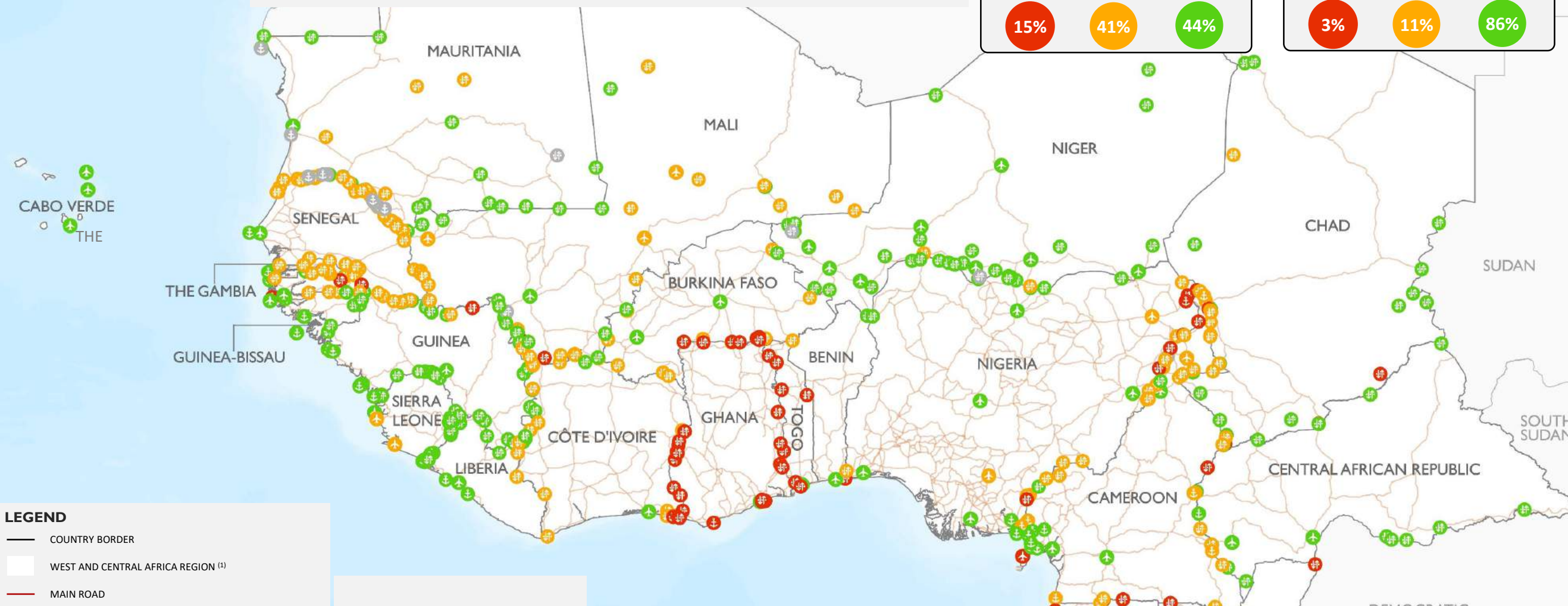
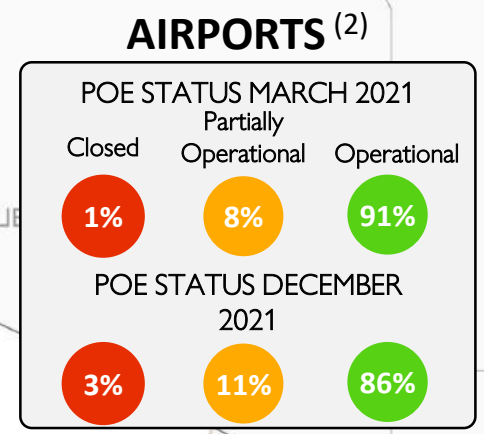
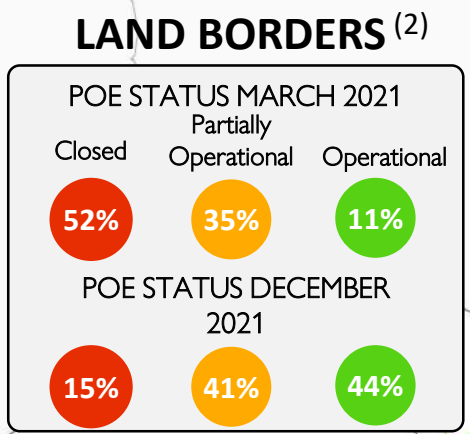
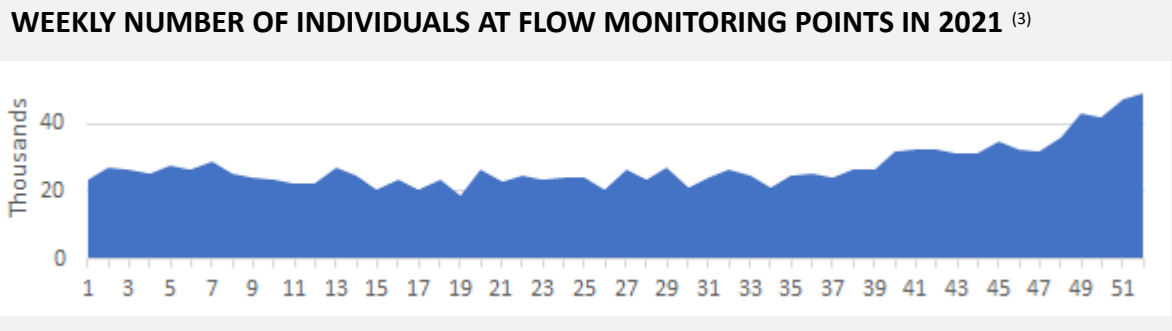


In 2021, the number of migrants who died or disappeared along the Central Mediterranean, Western Mediterranean, West African Atlantic and Eastern Mediterranean routes **(3,224)** increased compared to the year 2020 (2,326).



COVID-19 & MOBILITY

Regional Mobility Mapping in West and Central Africa • January 2022



LEGEND

- COUNTRY BORDER
- WEST AND CENTRAL AFRICA REGION ⁽¹⁾
- MAIN ROAD

TYPE OF POINT OF ENTRY ⁽²⁾

- INTERNATIONAL AIRPORT
- LAND BORDER POINT
- BLUE BORDER POINT

STATUS OF POINT OF ENTRY ⁽²⁾

- OPERATIONAL
- PARTIALLY OPERATIONAL (OPEN FOR COMMERCIAL TRAFFIC ONLY)
- CLOSED
- STATUS UNKNOWN

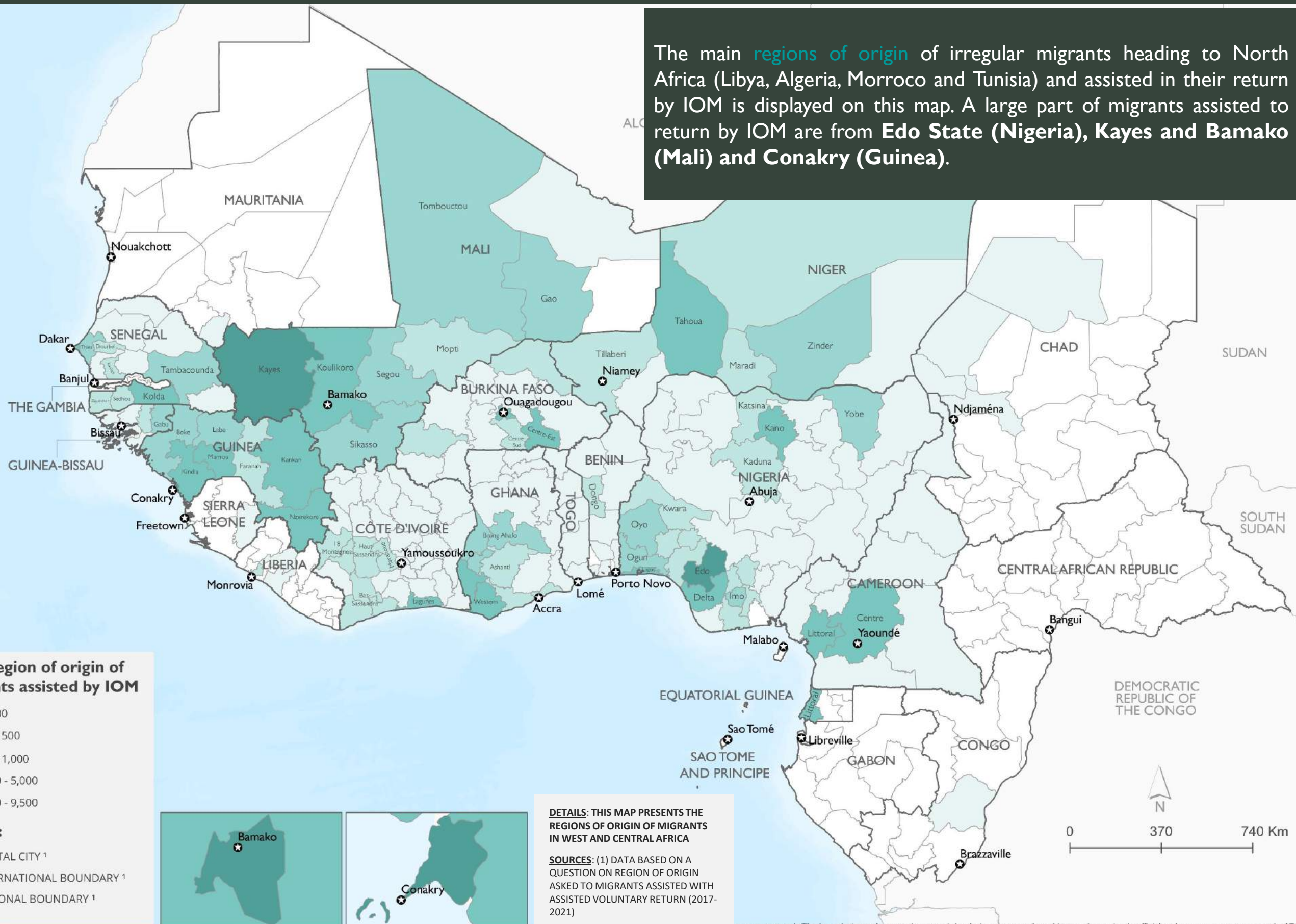
DETAILS: THIS MAP PRESENTS THE OPERATIONAL STATUS OF POINTS OF ENTRY IN WEST AND CENTRAL AFRICA. ADDITIONAL INFORMATION IS PROVIDED ON THE IMPACT OF COVID-19 ON REGIONAL MOBILITY

SOURCES: (1) REGION AS COVERED BY IOM REGIONAL OFFICE. (2) MOBILITY RESTRICTION MONITORING/POINT OF ENTRY ASSESSMENT CONDUCTED BY IOM IN WEST AND CENTRAL AFRICA, IN APRIL 2020 AND MARCH 2021. (3) BASED ON FLOW MONITORING REGISTRY CONDUCTED IN CHAD, MALI and NIGER IN 2021.

Travel disruptions, restrictions and bans in West and Central Africa adopted by governments to stem the spread of COVID-19, had profound effects on regional mobility. In 2021, regional migration flows returned to their regular seasonal patterns. As of December 2021, 44% of all Points of Entry in WCA were still closed.

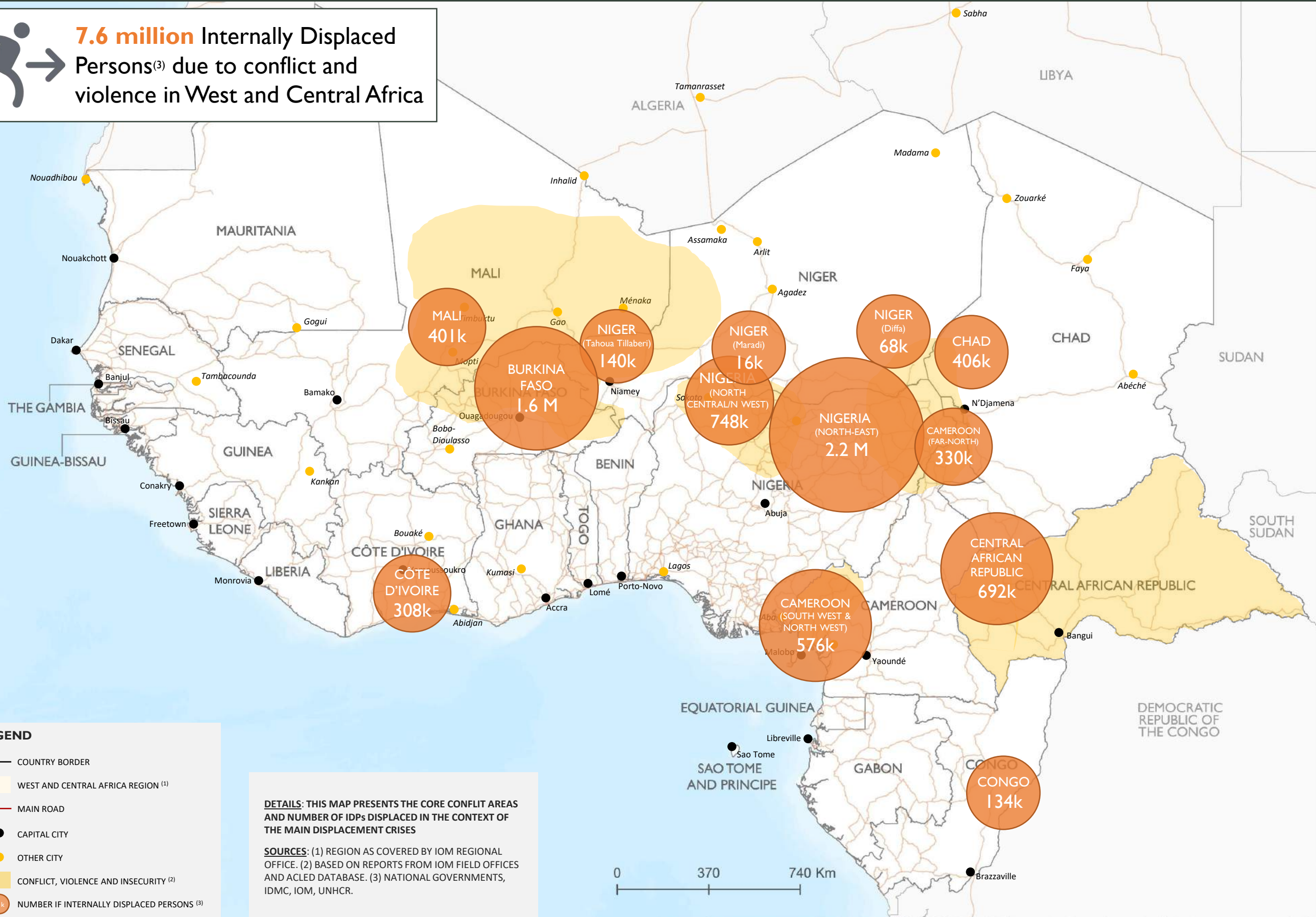
This map is for illustration purposes only. The boundaries and names shown and the designations used on this map do not imply official endorsement or acceptance by IOM.

The main **regions of origin** of irregular migrants heading to North Africa (Libya, Algeria, Morocco and Tunisia) and assisted in their return by IOM is displayed on this map. A large part of migrants assisted to return by IOM are from **Edo State (Nigeria), Kayes and Bamako (Mali) and Conakry (Guinea)**.





7.6 million Internally Displaced Persons⁽³⁾ due to conflict and violence in West and Central Africa



LEGEND

- COUNTRY BORDER
- WEST AND CENTRAL AFRICA REGION ⁽¹⁾
- MAIN ROAD
- CAPITAL CITY
- OTHER CITY
- CONFLICT, VIOLENCE AND INSECURITY ⁽²⁾
- NUMBER OF INTERNALLY DISPLACED PERSONS ⁽³⁾

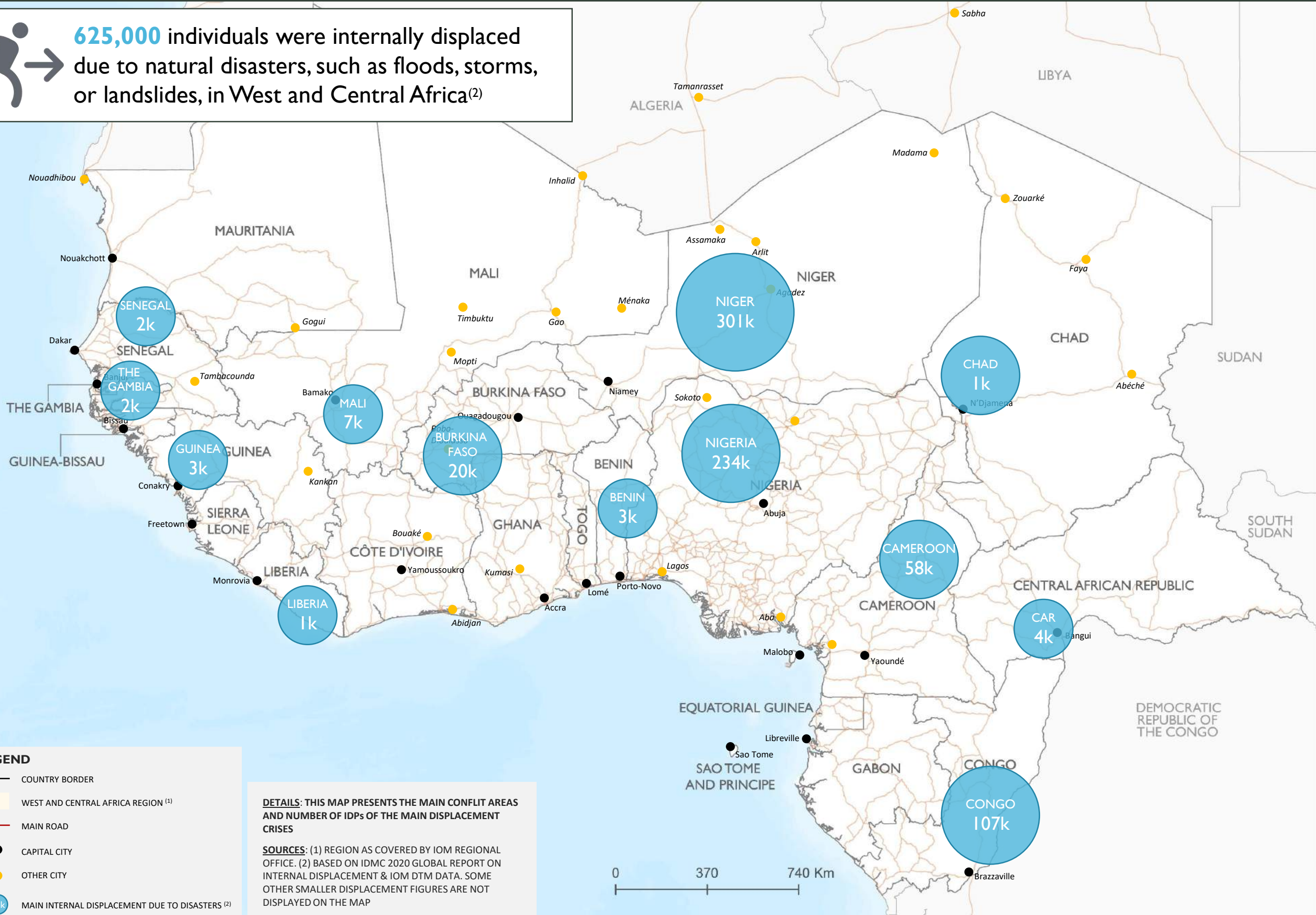
DETAILS: THIS MAP PRESENTS THE CORE CONFLICT AREAS AND NUMBER OF IDPs DISPLACED IN THE CONTEXT OF THE MAIN DISPLACEMENT CRISES

SOURCES: (1) REGION AS COVERED BY IOM REGIONAL OFFICE. (2) BASED ON REPORTS FROM IOM FIELD OFFICES AND ACLED DATABASE. (3) NATIONAL GOVERNMENTS, IDMC, IOM, UNHCR.

0 370 740 Km



625,000 individuals were internally displaced due to natural disasters, such as floods, storms, or landslides, in West and Central Africa⁽²⁾



LEGEND

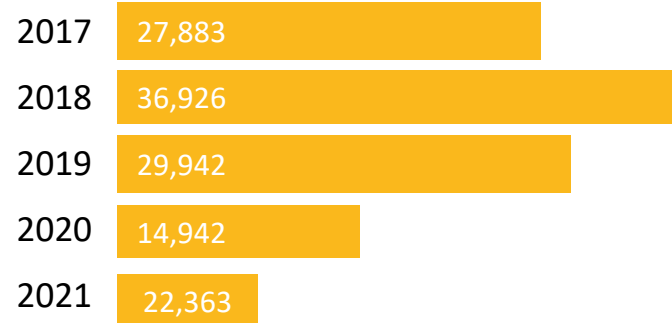
- COUNTRY BORDER
- WEST AND CENTRAL AFRICA REGION ⁽¹⁾
- MAIN ROAD
- CAPITAL CITY
- OTHER CITY
- MAIN INTERNAL DISPLACEMENT DUE TO DISASTERS ⁽²⁾

DETAILS: THIS MAP PRESENTS THE MAIN CONFLICT AREAS AND NUMBER OF IDPs OF THE MAIN DISPLACEMENT CRISES

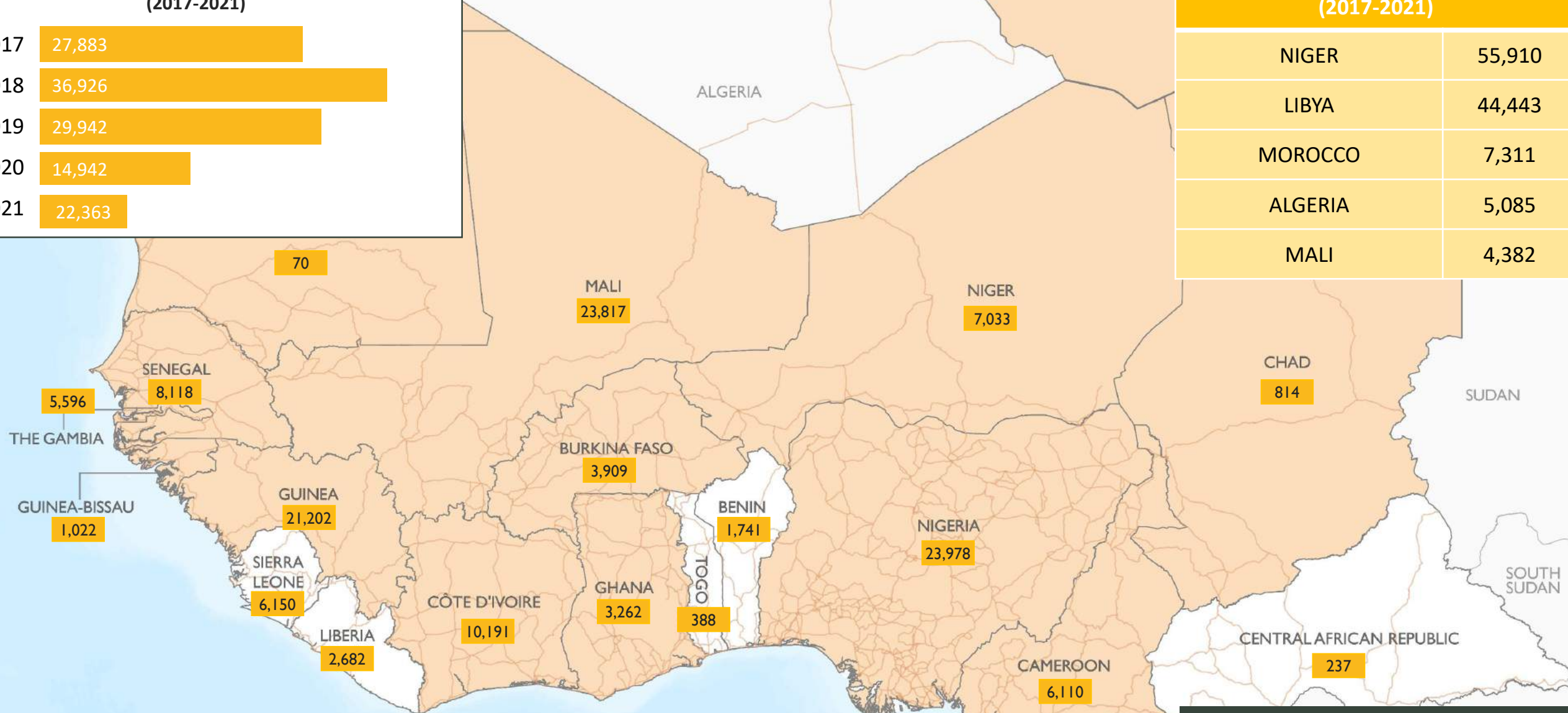
SOURCES: (1) REGION AS COVERED BY IOM REGIONAL OFFICE. (2) BASED ON IDMC 2020 GLOBAL REPORT ON INTERNAL DISPLACEMENT & IOM DTM DATA. SOME OTHER SMALLER DISPLACEMENT FIGURES ARE NOT DISPLAYED ON THE MAP

0 370 740 Km

Individuals assisted in their voluntary return (AVR) to WCA (2017-2021)



MAIN SENDING COUNTRIES (2017-2021)	
NIGER	55,910
LIBYA	44,443
MOROCCO	7,311
ALGERIA	5,085
MALI	4,382



LEGEND

- COUNTRY BORDER
- WEST AND CENTRAL AFRICA + LIBYA (EUTF) ⁽¹⁾
- XX ASSISTANCE TO VOLUNTARY RETURNS 2017-2021 ⁽²⁾
- MAIN ROADS

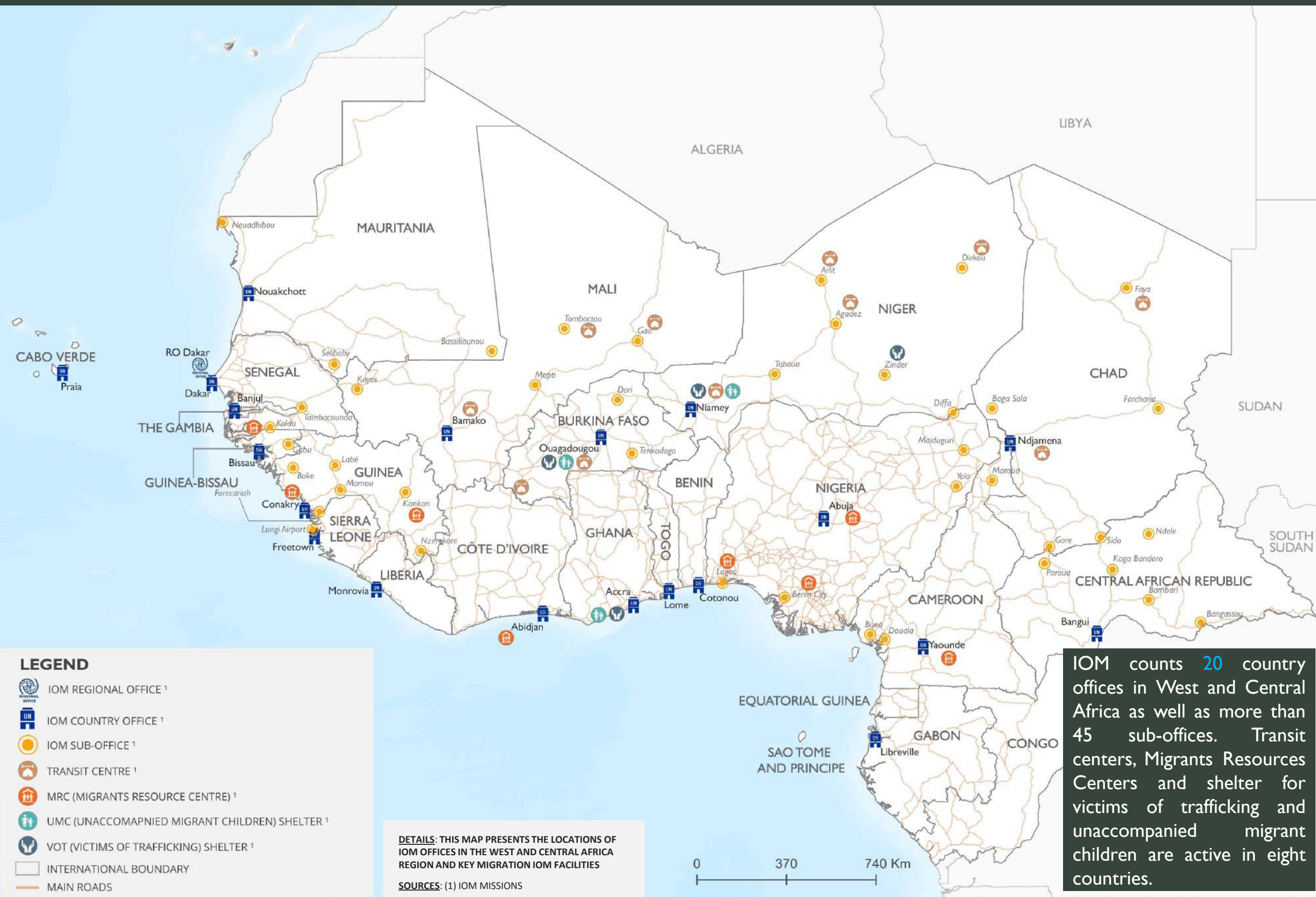
DETAILS: THIS MAP PRESENTS MIGRANTS' ORIGINS AND MAIN RETURN ASSISTANCE PROVIDED BY IOM

SOURCES: (1) IOM MISSIONS CURRENTLY IMPLEMENTING EU TRUST FUND ACTIVITIES. (2) ROUNDED UP FIGURES FOR STRANDED AND VULNERABLE MIGRANTS SUPPORTED BY IOM WITH THEIR VOLUNTARY RETURN FROM 2017 TO 2021.



IOM is assisting stranded migrants who wish to go home. Between 2017 and 2021, **132,056** migrants benefited from IOM assistance, often conducted through the **EU-IOM Joint Initiative on Migrant Protection and Reintegration**, a comprehensive programme to save lives, protect and assist migrants along key migration routes in Africa.

This map is for illustration purposes only. The boundaries and names shown and the designations used on this map do not imply official endorsement or acceptance by IOM



LEGEND

- IOM REGIONAL OFFICE ¹
- IOM COUNTRY OFFICE ¹
- IOM SUB-OFFICE ¹
- TRANSIT CENTRE ¹
- MRC (MIGRANTS RESOURCE CENTRE) ¹
- UMC (UNACCOMPANIED MIGRANT CHILDREN) SHELTER ¹
- VOT (VICTIMS OF TRAFFICKING) SHELTER ¹
- INTERNATIONAL BOUNDARY
- MAIN ROADS

DETAILS: THIS MAP PRESENTS THE LOCATIONS OF IOM OFFICES IN THE WEST AND CENTRAL AFRICA REGION AND KEY MIGRATION IOM FACILITIES

SOURCES: (1) IOM MISSIONS

IOM counts **20** country offices in West and Central Africa as well as more than **45** sub-offices. Transit centers, Migrants Resources Centers and shelter for victims of trafficking and unaccompanied migrant children are active in eight countries.

This map is for illustration purposes only. The boundaries and names shown and the designations used on this map do not imply official endorsement or acceptance by IOM

NOTE ON METHODOLOGY I

This section provides additional details on data sources used in this report

DATA ON RETURNS THROUGH ASSISTED VOLUNTARY AND HUMANITARIAN RETURN PROGRAMMES

DESCRIPTION: Data collected on the regions of origin of migrants provides details on individuals assisted in voluntary or humanitarian return by IOM. It is based on databases from Libya and Niger that have been aggregated and uses nearly 110,000 entries dating from 2016 to 2020.

It does not necessarily present the origins of all migrants moving in WCA and focuses on a very specific migrant population (those trying to move to other regions).

FLOW MONITORING (DTM)

COUNTRIES: BURKINA FASO, CHAD, GUINEA, MALI, NIGER

DESCRIPTION: At Flow Monitoring Point (FMP), enumerators collect information on the number, frequency and defining features of individuals transiting through a particular location. Prior to the establishment of an FMP, areas of high mobility are identified following discussions with national and local actors. The locations at which FMPs are set up, key points of transit such as border points or coach stations, are then identified based on participatory mapping of main migration routes conducted in partnership with national and local authorities. In 2020, more than 30 FMPs were active in eight countries of the

West and Central Africa region (Burkina Faso, Cameroon, Chad, Guinea, Mali, Niger, Nigeria, and Senegal).

Data is collected at FMPs using two main tools: Flow Monitoring Registry (FMR) and Flow Monitoring Survey (FMS). The FMR includes direct observations at places of entry, transit or exit, as well as interviews with key informants (including transportation workers, housing workers, and migration officials) to assess movement trends, routes, and countries of origin and destination. The FMS entails more detailed individual surveys to profile people on the move, including education levels and skills/employment; drivers of migrations; and needs, risks and vulnerabilities. This document presents an analysis of surveys conducted using the FMS tool. A similar methodology is used in other regions (Horn of Africa and Europe) to allow for comparative analysis of flows and individuals' characteristics.

LIMITS: The data presented on Page 11 is based on surveys conducted with travellers at FMPs in Senegal, Mali, Guinea, Burkina Faso, Nigeria, Niger and Chad during the timeframe indicated. The data should not be generalized and does not present a full picture of inter- and intra-regional migration, but rather a snapshot of migration flows at specific locations. For example, while IOM aims to establish Flow Monitoring Points at locations with high transit flows (based on information from key informants), flows are changing, and FMPs can only provide a partial picture.

MOBILITY TRACKING (DTM)

COUNTRIES: CAMEROON, CENTRAL AFRICAN REPUBLIC, CHAD, MALI, NIGERIA.

DESCRIPTION: Mobility tracking aims to quantify presence of population categories, reasons for displacement, length of displacement and needs within defined locations, with a frequency that captures mobility dynamics. This component is well suited to quantifying groups of people, whether internally displaced, migrants in transit locations, stranded migrants or other populations of concern. Its approach is highly customizable: it can be light-touch or in-depth depending on the phase and requirements of the response, and often increases in depth and detail over successive rounds. Mobility tracking can be established quickly and is suitable for covering large areas, including for nationwide coverage. It is better suited for populations with some base level of stability and predictability of location, rather than highly mobile populations. However, in and out movement is routinely captured, and the event tracking tool can supplement to mitigate this limitation.

NOTE ON METHODOLOGY II

TRANSHUMANCE TRACKING TOOL (DTM)

COUNTRIES: BENIN, BURKINA FASO, CAMEROON, CHAD, COTE D'IVOIRE, GHANA, MALI, MAURITANIA, NIGER, TOGO

Transhumance is a farming method by which farmers accompany their herds in search of pasture and water points. It can be carried out internally in a country or cover several countries, and often extends over large distances. Climate variation, the economic situation and the reduction of pastures and water have accentuated the phenomenon of transhumance for twenty years, pushing transhumant pastoralists to travel longer distances.

IOM has developed the Transhumance Tracking Tool (TTT). The TTT, with data collected through a network of key informants, collects key data on transhumance movements in West and Central Africa, with the aim of providing the information needed for the implementation of support programs for populations involved in transhumance.

This methodology aims to support, strengthen and harmonize transhumance monitoring within the West and Central Africa region implemented by various associations linked to the Bilital Maroobé Network (RBM) which provide information to help implement programs for the population involved in transhumance and try to inform populations and authorities of the risks of conflicts linked to transhumance.

The methodology used in the context of the TTT, developed in collaboration with government partners and society civil, is based on an approach similar to the monitoring of populations (Flow Monitoring Points by IOM) and is based on three fundamental tools (the mapping, counting and alert).

MISSING MIGRANTS PROJECT (GMDAC)

COUNTRIES: BURKINA FASO, CHAD, MALI, MAURITANIA, NIGER, SENEGAL

Missing Migrants Project counts migrants who have died at the external borders of states, or in the process of migration towards an international destination, regardless of their legal status. The Project records only those migrants who die during their journey to a country different from their country of residence.

Missing Migrants Project data include the deaths of migrants who die in transportation accidents, shipwrecks, violent attacks, or due to medical complications during their journeys. It also includes the number of corpses found at border crossings that are categorized as the bodies of migrants, on the basis of belongings and/or the characteristics of the death.

The Missing Migrants Project currently gathers information from diverse sources such as official records – including from coast guards and medical examiners – and other sources such as media reports, NGOs, and surveys and interviews of migrants. In the Mediterranean region, data are relayed from relevant national authorities to IOM field missions, who then share it with the Missing Migrants Project team. Data are also obtained by IOM and other organizations that receive survivors at landing points in Italy and Greece. IOM and UNHCR also regularly coordinate to validate data on missing migrants in the Mediterranean.

There are some limitations to the data available on deaths and disappearances during migration in West and Central Africa. The information available is sparse and rarely

contains information on sex, age, and places of disappearance or death. Moreover, there is no perfectly harmonized data on the number of migrants missing, nor information on the families who are still looking for those lost during their migration.

EXTERNAL SOURCES

ARRIVALS IN ITALY, GREECE AND SPAIN: data presented on arrivals to Europe is taken from figures provided by Greek, Italians and Spanish national authorities. However, the complete nationality breakdown of migrants is not available; only the top 10 nationalities of arriving migrants is provided. Therefore, nationality figures presented are likely fragmented.

IDMC: the Internal Displacement Monitoring Centers is the world's definitive source of data and analysis on internal displacement and provide regular data on internal displacement through its Global internal displacement database and report.

UNDESA: the United Nations Department for Economic and Social Affairs (UNDESA) provides regular update on its migrants' stocks. Data presented does not reflect all migration stocks in each country and are likely underestimating total migrants' population in the region.

REGIONAL DATA HUB FACTSHEETS



International Organization for Migration (IOM)
The UN Migration Agency

Regional Office for West and Central Africa
Zone 3, Route des Almadies
Dakar BP 16 838

Senegal: Tel: +221 33 689 62 00 - Fax: +221 33 869 62 33

Information management: RO Dakar – Data & Research Unit
rodakar-dataresearch@iom.int or djusselme@iom.int