

Overall returnees through **Torkham and Chaman** since January 2020 **1,926**

- 92.3%** *Undocumented families
- 7.7%** *Undocumented individuals travelling with documented families
- 0%** *Undocumented individuals travelling alone

- 68%** Individuals with no documents
Afghans who do not have any legal document (POR, ACC, VISA)
- 9%** Individuals with ACC
Individuals with Afghan Citizen Card (ACC)
- 23%** Individuals with Tazkira
Afghan ID card that comes under the Undocumented Afghans category
- 0%** Individuals with ACC Token
Individuals who received token to obtain ACC
- 0%** Individuals with Expired POR Card
Proof of Registration (POR) cards that have expired before 2015
- 0%** Individuals with no Passport or Expired Visa
Afghans with expired visa or passport without visa



6 Undocumented Afghan individuals returned to Afghanistan through the **Torkham** border crossing, whereas none through **Chaman/Spin Boldak** border crossing.

WHO IS AN UNDOCUMENTED AFGHAN

- Individuals with No Documents
- Individuals with No Passport or Lapsed Visa
- Individuals with Tazkira
- Individuals with Expired POR Card
- Individuals with ACC Card
- Individuals with ACC Token

RESPONDENT'S PROFILE

Respondents by Gender

85% Male, **15% Female**

Age Group of Respondents

Age Group	Gender	Total %
5 - 17 Yr		0%
18 - 59 Yr		77%
60 + Yr		23%

RETURNEE'S PROFILE

Age-Gender Disaggregation (Individuals)

Total Female: 54.3%, **Total Male: 45.7%**

Age Group	Female %	Male %
60+ Yr	1.4%	1.4%
18-59 Yr	18.6%	17.1%
5 - 17 Yr	18.6%	11.4%
0 - 4 Yr	15.7%	15.8%

VULNERABLE CASES

Overall **11%** individuals were identified as vulnerable during this reporting period

- 89%** Total Vulnerable Cases
- 25%** Elderly Members
- 13%** Disabled Persons
- 38%** Chronically ill persons
- 0%** Pregnant Women
- 0%** Female Headed Households
- 24%** *Widows+ Other

* Other category includes 13% drug addicts persons.

TRANSPORT & ASSETS

Overall **5** vehicles crossed from **Torkham and Chaman/Spin Boldak** borders. Majority of the returnees used **Trucks and Pick-ups (54% and 46% respectively)** to return to Afghanistan. **Cash & Household Items** were reported as highest priority assets for migrants returning to Afghanistan.

* % of Households travelling with assets to Afghanistan

Border	Household Items or Personal Belongings	Productive Assets	Families Carrying Cash	Livestock	Own Transportation
Torkham	100%	0%	0%	0%	0%
Chaman	0%	0%	0%	0%	0%

Transport Type Summary

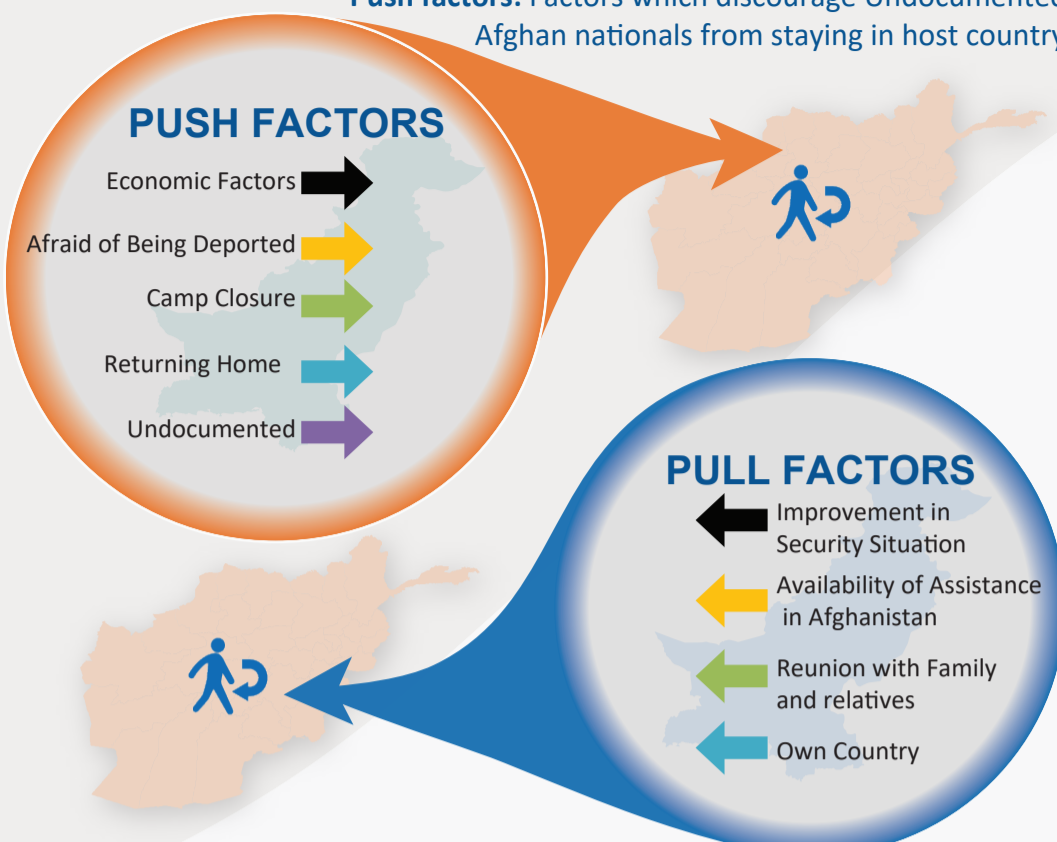
Transport Type	Percentage	Average Individuals per Unit
Truck	54%	On average 3 individuals used one Truck
Pickup	46%	On average 3 individuals used one pickup
Bus	0%	On average 0 individuals used one bus
Rented Car	0%	
By Foot	0%	

RETURNS & ACC CARD DISTRIBUTION

Legend: **Torkham** (Blue line), **Chaman** (Orange line), **ACC Card Distributed** (Callouts)

PUSH AND PULL FACTORS RECORDED BASED ON RETURNEES RESPONSE

Push factors: Factors which discourage Undocumented Afghan nationals from staying in host country.

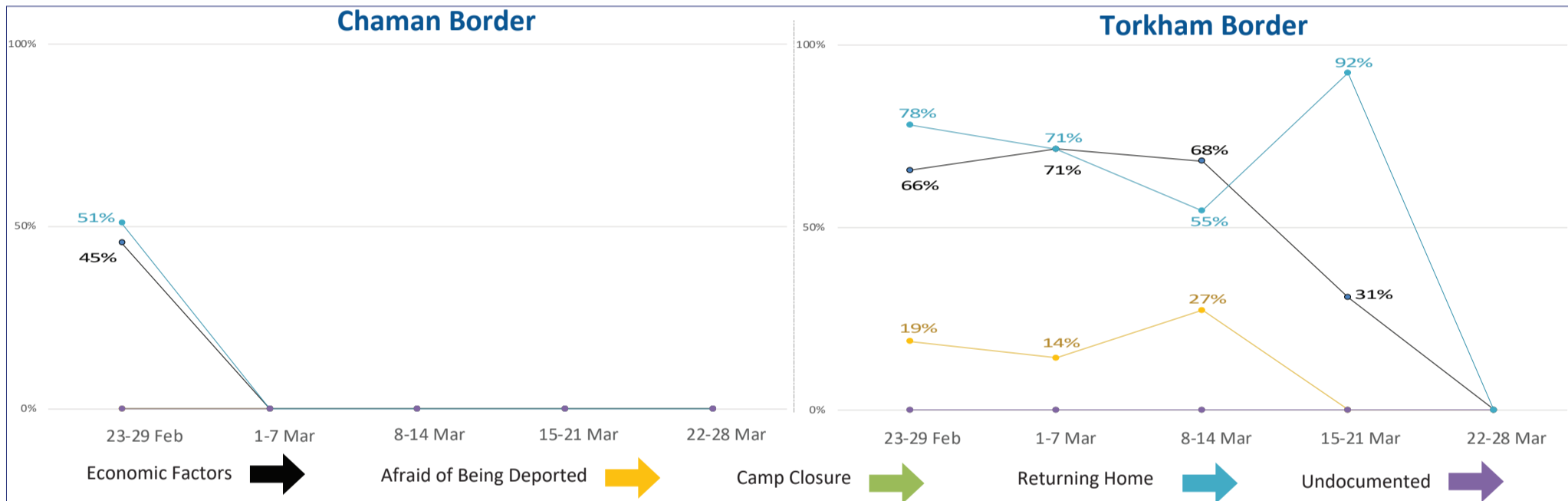


Key highlights include:

- Out of the total number of returns during current reporting period **54%** returnees were female whereas **46%** were male.
- Top 5 destination provinces for returns were **Kunduz (53%), Kabul (37%), Nangahar (9%)** and **Laghman (21%)**.
- Largest proportion of returns were from **Khyber Pakhtunkhwa (53%), Punjab (26%)** followed by Islamabad (**21%**).
- Majority of the respondents were male while **15%** of the respondents were female.
- In **Torkham** and **Chaman**, **none** of the respondents reported against push factor, and neither did they for any of the pull factors.
- During the reporting period, only 5 vehicles crossed through **Torkham** border, and it was noted that no individual stayed overnight at border crossing.
- The greatest age-wise proportion of Afghans crossing the border is between 18-59 years of age i.e. **36%**, while minors (under the age of 5 years) consisted of nearly **31%** of the total returnees.
- Moreover, out of the respondents interviewed during the last two weeks, **11%** fell into **vulnerable** criteria such as Chronically ill, elderly, widows and disable persons.

Pull factors: Factors which encourage Undocumented Afghan nationals to return to their country of origin.

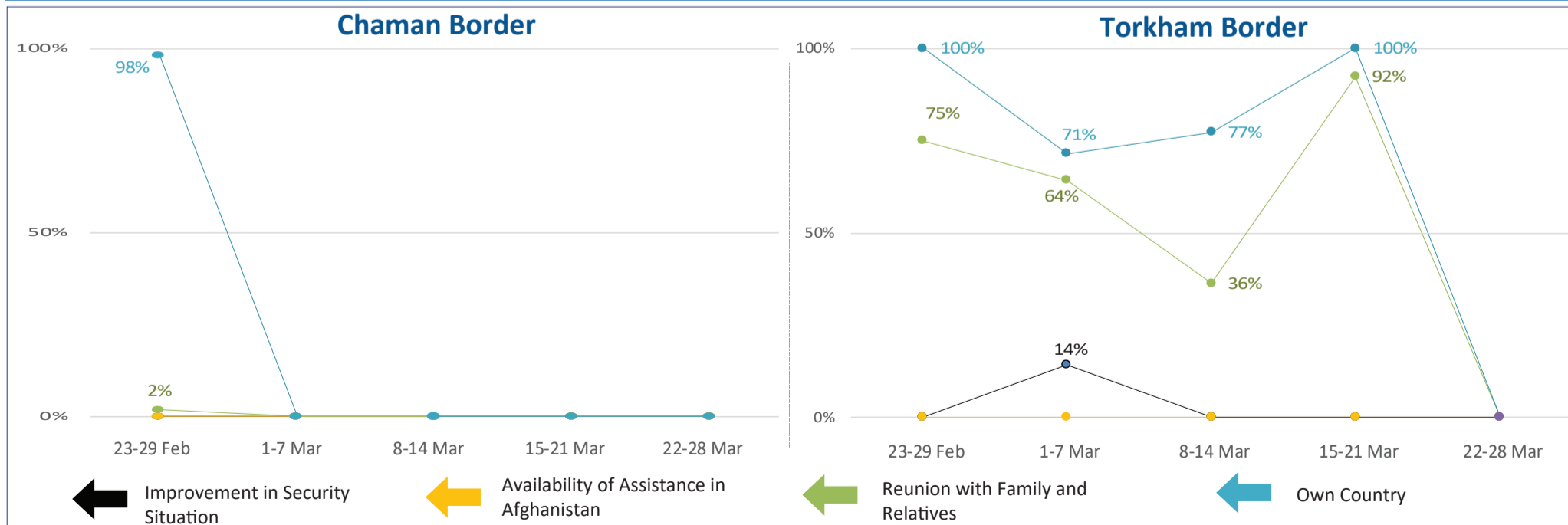
PUSH Factors (Weekly Trend)



Top three ranked provinces in Pakistan based on the PUSH Factors' responses are.



PULL Factors (Weekly Trend)



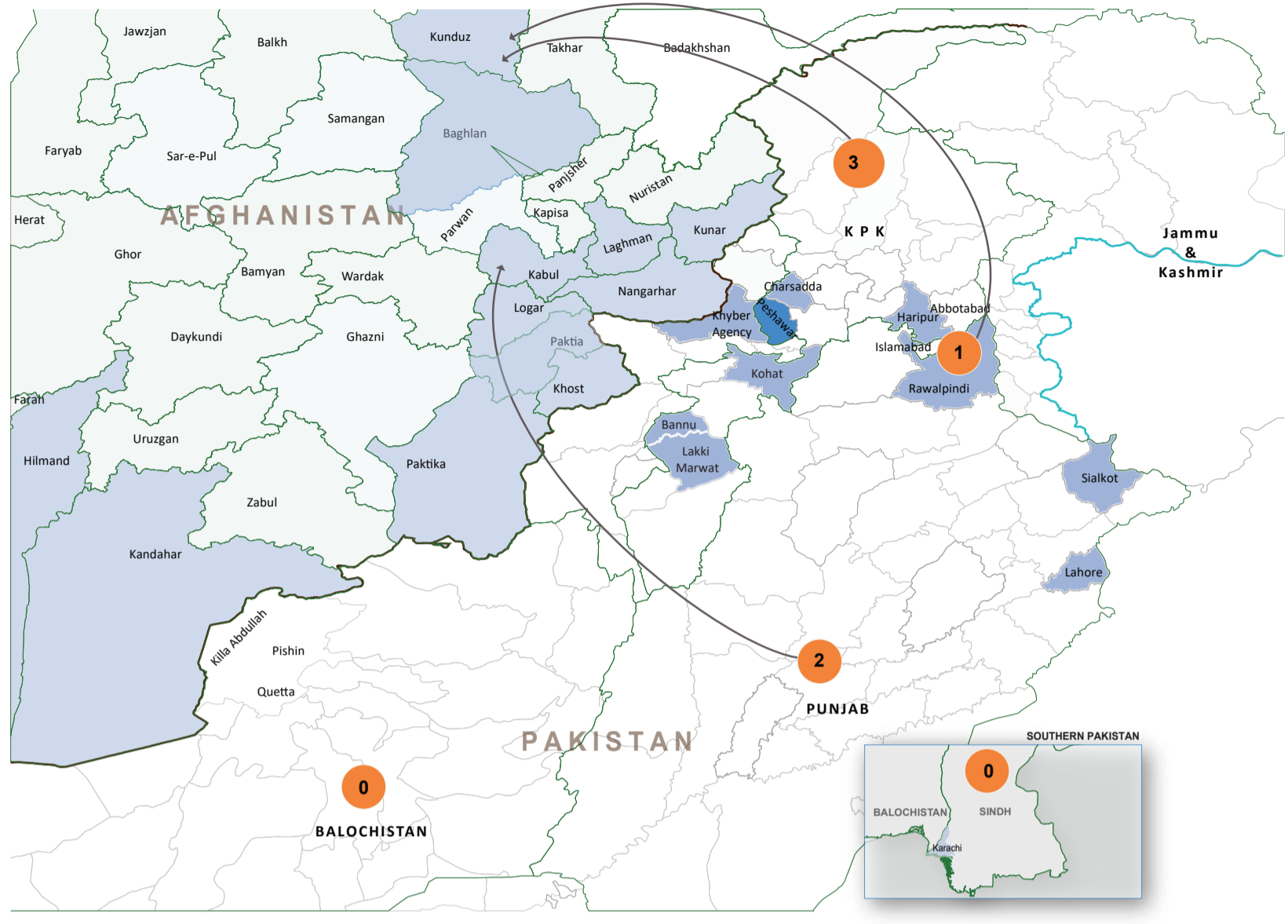
Top three ranked provinces in Afghanistan based on the PULL Factors' responses are.





HIGH RETURN AREAS

Population Movement Trend for Spontaneous Returns of Undocumented Afghans from Pakistan



AFGHANISTAN

The top 5 destination provinces for returns are

- Nangarhar (9%)
- Kunduz (53%)
- Kabul (37%)
- Laghman (1%)

PAKISTAN

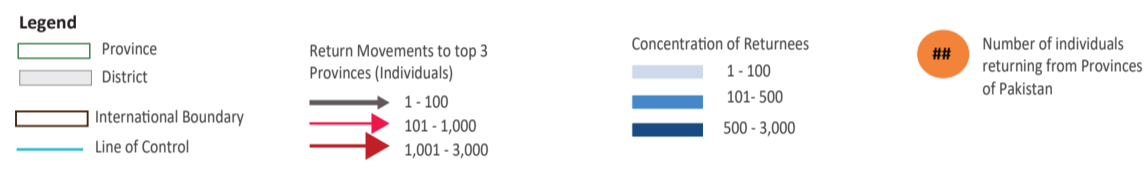
The largest proportion of returns are from:

- Khyber Pakhtunkhwa (53%)
- Punjab (26%)
- Islamabad (21%)

Data Source: Population Census Organization, UNOCHA

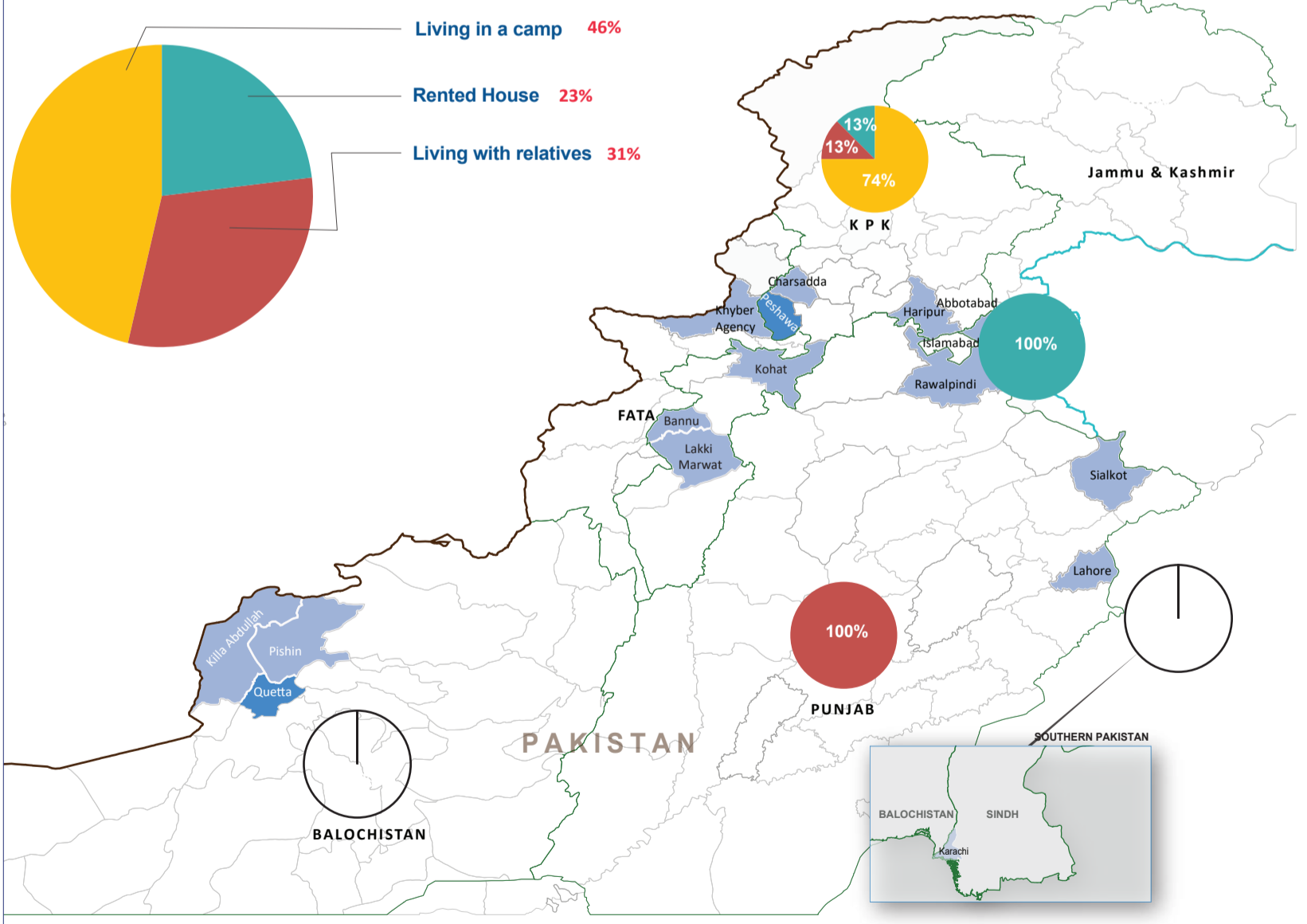
Disclaimers: The designations employed and the presentation of material on this map do not imply the expression of any opinion whatsoever on the part of the Secretariat of the United Nations concerning the legal status of any country, territory, city or area or of its authorities, or concerning the delimitation of its frontiers or boundaries. The dotted line represents approximately the line of control between India and Pakistan. The final status of Jammu and Kashmir has not yet been agreed upon by the parties.

Please note: The boundaries and names shown and the designations used on this map do not imply official acceptance or endorsement by IOM.



LIVING CONDITIONS IN PAKISTAN

Current Living Conditions of Undocumented Afghans in Pakistan



Overall, 46% of Undocumented Afghan returnees reported living in camps, 31% living with relatives whereas the remaining 23% reported living in rented houses.

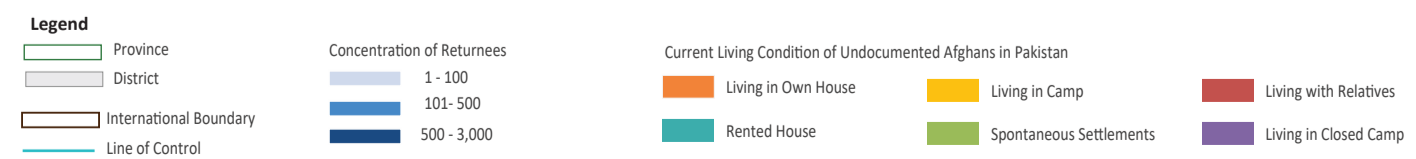
There are differences at provincial levels where for example in Islamabad 100% and in Khyber Pakhtunkhwa 13% of Undocumented Afghan returnees reported living in rented houses.

In Punjab 100% and in Khyber Pakhtunkhwa 13% of the Undocumented Afghan returnees reported living with relatives.

Data Source: Population Census Organization, UNOCHA

Disclaimers: The designations employed and the presentation of material on this map do not imply the expression of any opinion whatsoever on the part of the Secretariat of the United Nations concerning the legal status of any country, territory, city or area or of its authorities, or concerning the delimitation of its frontiers or boundaries. The dotted line represents approximately the line of control between India and Pakistan. The final status of Jammu and Kashmir has not yet been agreed upon by the parties.

Please note: The boundaries and names shown and the designations used on this map do not imply official acceptance or endorsement by IOM.



* The Response for "Own House" relates to the fact that land/house is bought in the name of Pakistani relatives.