

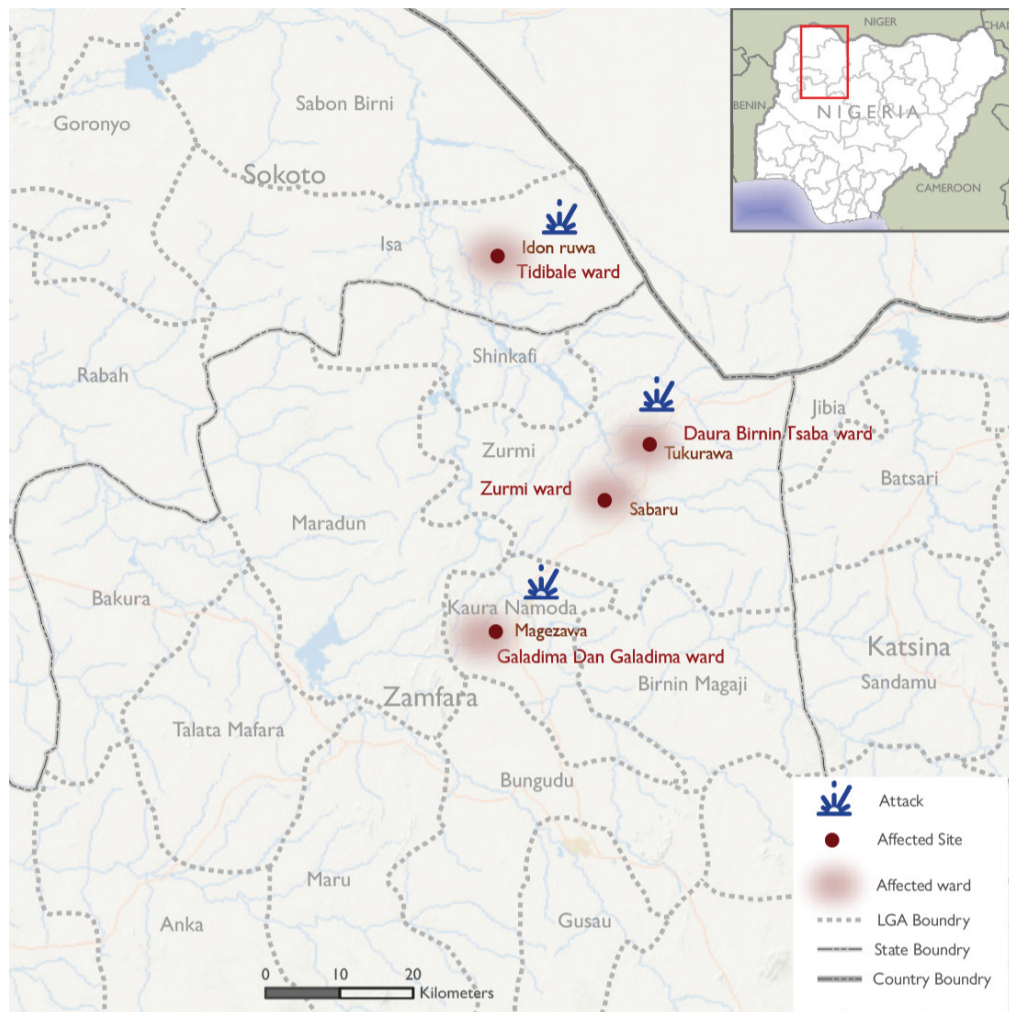
1,133 Individuals Affected
 37 Damaged Shelters
 4 Affected Locations
 10 Casualties
 Triggers:

Event Overview

On 29 and 30 June 2024, armed bandits attacked the communities of Sabaru, Tukurwa in Zurmi ward of Zurmi local government area (LGA) and Magezawa in Galadima Dan Galadima ward in Kaura Namoda local government area (LGA) of Zamfara State and the community Idon ruwa in Tidibale ward of Isa local government area (LGA) of Sokoto State. Ten casualties/injuries were reported. The attack affected 1, 133 individuals in 227 households. The affected individuals included 634 children, 281 women and 218 men.

Of all the needs identified, food and security were the most prevalent. Other needs included shelter and non-food items (NFI).

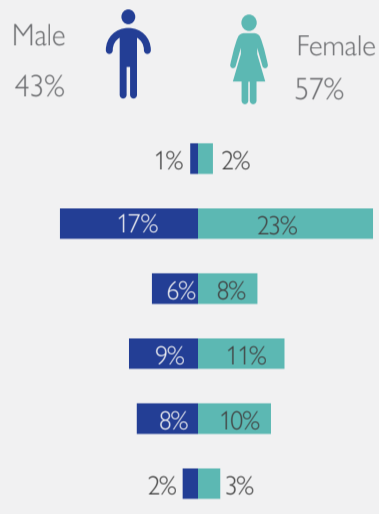
Following these events, DTM (Displacement Tracking Matrix) field staff conducted rapid assessments to inform the humanitarian community and Government/partners, and to enable a targeted response.



Map 1. Affected locations

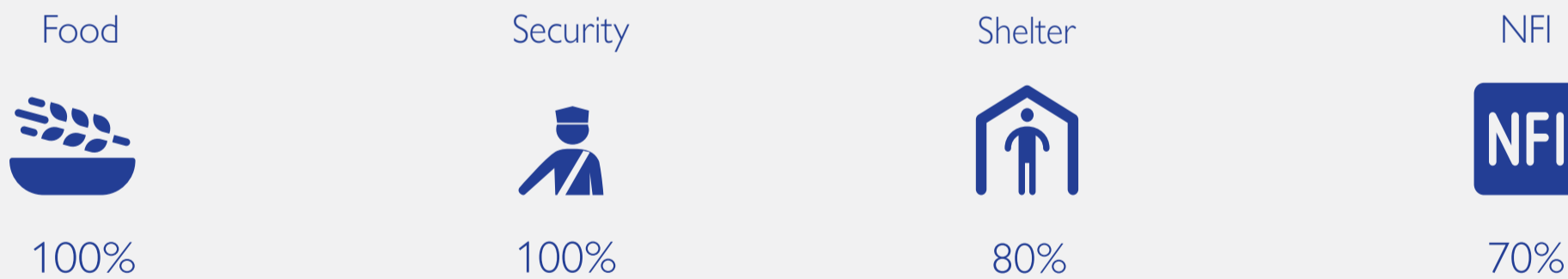
This map is for illustration purposes only. The boundaries and names shown, and the designations used on this map do not imply official endorsement or acceptance by the International Organization for Migration.

Demographic Breakdown



Gender breakdown of the affected population

Priority Needs*



*Multiple choice

Table 1. Affected individuals

State	LGA	Ward	Site	Triggers	Number of affected households	Number of affected individuals			Casualty	Number of damaged shelter
						Male	Female	Total		
Sokoto	Isa	Tidibale	Idon ruwa	Attack	14	25	47	72	0	0
Zamfara	Kaura Namoda	Galadima Dan Galadima	Magezawa	Attack	106	257	315	572	4	22
	Zurmi	Daura Birnin Tsaba	Tukurawa	Attack	15	183	231	414	6	0
		Zurmi	Sabaru	Attack	92	30	45	75	0	15
Total					227	495	638	1,133	10	37

Methodology: Crises and emergencies require the humanitarian community to act urgently. As a subcomponent of DTM's mobility tracking, flash reports utilise direct observation and a broad network of key informants to monitor sudden displacement resulting from events like natural disasters or attacks and collect information on the number, profile, and immediate needs of affected populations. In the initial 24 - 48 hours after an incident, DTM Nigeria activates a rapid assessment to document the event, urgent needs of affected individuals, demographic information, and impact. If displacement occurs, DTM Nigeria issues an Early Warning Flash/Incident report within 72 hours, notifying partners and stakeholders.

Disclaimer: The opinions expressed in the report are those of the authors and do not necessarily reflect the views of the International Organization for Migration (IOM). The designations employed and the presentation of material throughout the report do not imply the expression of any opinion whatsoever on the part of IOM concerning the legal status of any country, territory, city or area, or its authorities, or concerning its frontiers or boundaries. When quoting, paraphrasing, or in any other way using the information mentioned in this report, the source needs to be stated appropriately as follows: "Source: Displacement Tracking Matrix (DTM) of the International Organization for Migration (IOM), July 2024."

