

OVERVIEW

With the onset of the rainy season in Nigeria's northeastern states of Borno, Adamawa and Yobe, varying degrees of damage have been reported in host communities, camps and camp-like settlements. Heavy rainfalls, accompanied by strong winds have caused serious damage to shelters and infrastructures.

Between 1 June and 31 August 2022, IOM's DTM programme carried out assessments to ascertain the level of damage sustained in IDP and host community sites due to heavy windstorms, rainfall and flood. Overall, 72 host community locations, 11 camps and nine collective settlements were assessed. The worst-hit of the assessed sites was Banki, a host community location in Buduwa/Bula Chirabe ward of Bama LGA, where heavy rainfall alongside the opening of the dam gates in Cameroon led to the flooding of the community affecting an estimated 7,389 individuals.

In total, 4,989 shelters/houses were damaged by the flood, leaving a total of 8,181 households (4,645 in Borno State, 962 in Adamawa State and 2,574 in Yobe State) in immediate need of shelter. Three hundred and thirty-four casualties were reported as a result of rainstorms and floods during the period.

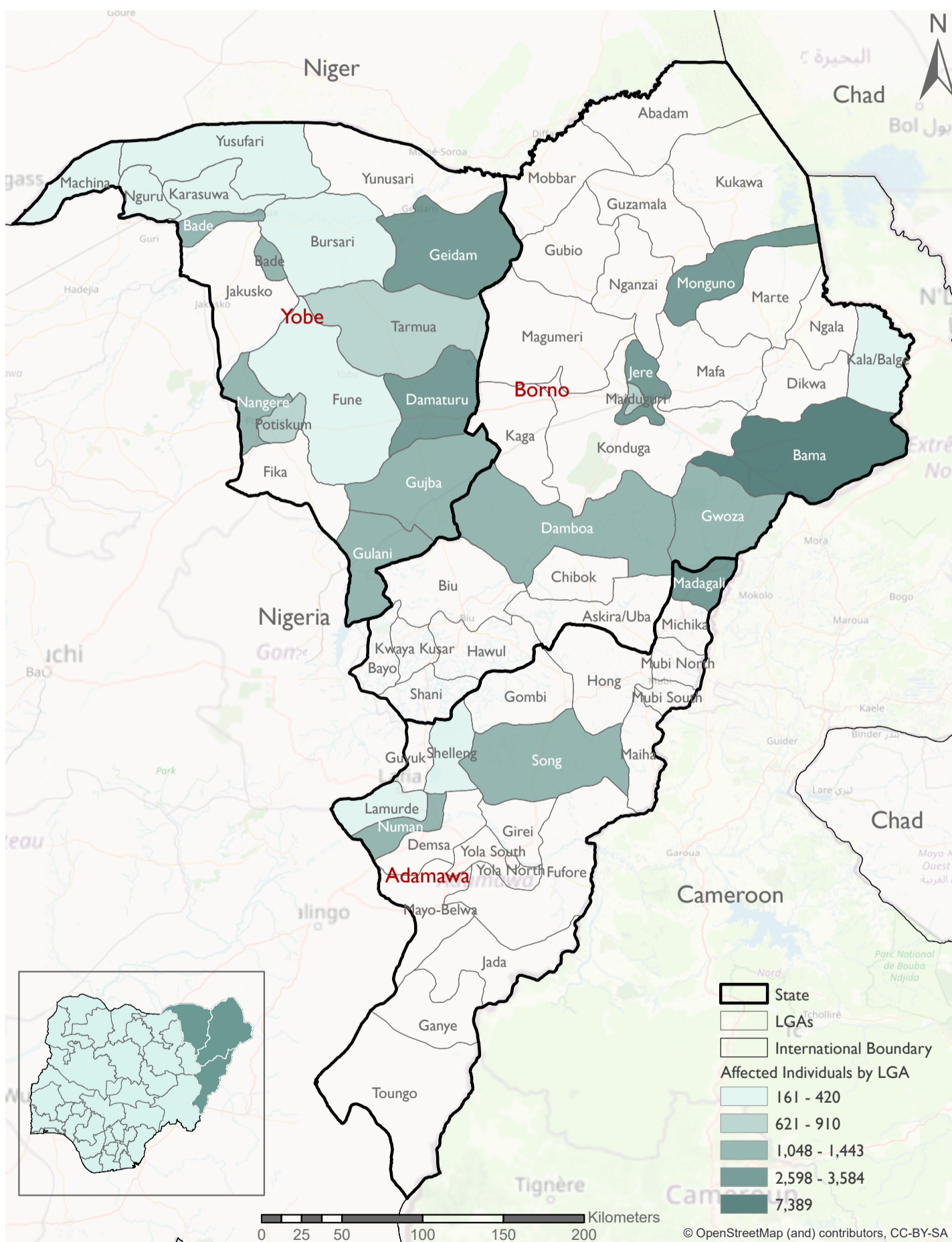
A total of 37,475 individuals (16,393 in Borno State, 5,979 in Adamawa State and 15,042 in Yobe State) have been affected by heavy rainfalls that have led to flooding since the inception of the rainy season. Of the total individuals, Borno State accounts for 44%, Yobe State 40% and Adamawa State 16%.

NEEDS

Shelter, shelter repair kits and a good drainage system have been the major need of the affected population.

A number of affected individuals in Geidam and Gulani LGAs in Yobe state have received Food Items, NFI and cash support from the government.

AFFECTED LGAs



The maps in this report are for illustration purposes only. The depiction and use of boundaries, geographic names, and related data shown on maps and included in this report are not warranted to be errors free nor do they imply judgment on the legal status of any territory, or any endorsement or acceptance of such boundaries by IOM

State	LGA	Ward	Site Type	Site Name	No. of Affected Households	No. of Affected Individuals	Male	Female	Children	Casualties	No. of Damaged Shelters
Adamawa	Lamurde	Ngbakowo	Host Community	Mbakowo	38	221	92	129	117	2	52
	Madagali	Duhu/ Shuwa	Host Community	Shuwa	181	1,080	449	631	677	19	126
	Madagali	Gulak	Host Community	Gulak Gari	137	844	388	456	557	15	69
	Madagali	Hyambula	Host Community	Hyambula	63	378	181	197	272	8	62
	Madagali	Pallam	Host Community	Pallam "B"	55	330	144	186	223	0	30
	Madagali	Wagga	Host Community	Wagga	41	250	96	154	152	0	23
	Numan	Imburu	Host Community	Imburu	109	580	248	332	210	0	63
	Numan	Bare	Host Community	Bilachi	37	175	77	98	103	11	18
	Numan	Gamadio	Host Community	Wadikake	29	198	84	114	108	1	14
	Numan	Kodomti	Host Community	Kikan	54	323	137	186	170	2	22
Shelleng	Shelleng	Host Community	Anguwan Maikano	70	400	176	224	194	10	70	
Song	Song Gari	Host Community	Mbalyebe	148	1,200	517	683	838	4	100	
Total					962	5,979	2,589	3,390	3,621	72	649
Borno	Bama	Buduwa/Bula Chirabe	Camp	Banki Camp	2,332	7,389	3,279	4,110	5,736	48	348
	Damboa	Damboa Central	Host Community	Damboa Central	209	571	227	344	362	17	96
	Damboa	Damboa Central	Host Community	Hausari	106	477	301	176	346	0	223
	Gwoza	Pulka/Bokko	Collective Settlement	Camp D	18	61	17	44	37	0	2
	Gwoza	Pulka/Bokko	Host Community	Gufta Mud brick	229	1,382	457	925	927	2	229
	Jere	Mashamari	Camp	Alhaji Bashir liman House	22	110	49	61	54	0	22
	Jere	Old Maiduguri	Camp	El Miskin Camp 1	123	458	202	256	242	0	123
	Jere	Old Maiduguri	Camp	Faria Gidan Block Camp	115	513	222	291	303	0	115
	Jere	Mashamari	Collective Settlement	Bash Camp	55	198	87	111	93	0	55
	Jere	Old Maiduguri	Camp	Al-Yakub	101	505	232	273	271	0	101
	Jere	Old Maiduguri	Camp	El-Miskin Camp I	85	243	107	136	140	0	80
	Jere	Old Maiduguri	Camp	Shuwari Filling Ball Camp	76	188	83	105	95	0	76
	Jere	Old Maiduguri	Collective Settlement	Ahmed Grema	91	347	158	189	188	0	91
	Kala Balge	Rann "A"	Collective Settlement	Ajari/Bulamari	29	83	40	43	67	0	26
	Kala Balge	Rann "A"	Collective Settlement	Boarding Primary School	27	83	35	48	42	0	20
	Kala Balge	Rann "A"	Collective Settlement	General Hospital Rann	7	52	20	32	25	0	16
	Maiduguri M.C	Bolori I	Collective Settlement	Shuwari 5 Camp	125	626	254	372	229	0	125
	Maiduguri M.C	Maisandari	Collective Settlement	Ajiri	11	58	24	34	39	0	11
	Maiduguri M.C	Maisandari	Collective Settlement	Kuru Camp	29	148	62	86	77	0	29
Maiduguri M.C	Maisandari	Host Community	sare 1	9	42	16	26	25	0	9	
Monguno	Monguno	Camp	Gana Ari Camp	35	139	59	80	67	0	23	
Monguno	Monguno	Camp	G.G.S.S Camp	432	1,735	766	969	634	1	63	
Monguno	Monguno	Camp	N.R.C.Camp	379	985	458	527	282	0	130	
Total					4,645	16,393	7,155	9,238	10,281	68	2,013
Yobe	Bade	Lawan Audu	Host Community	Sabon Gari	45	347	131	216	181	0	45
	Bade	Lawan Fannami	Host Community	Abujan Amare	42	319	133	186	188	4	41
	Bade	Lawan Fannami	Host Community	Kesewa	23	231	83	148	126	0	23
	Bade	Dagona	Host Community	Dagona	28	181	75	106	93	3	28
	Bursari	Garun Dole/Garin Alkali	Host Community	Burum	29	215	94	121	66	3	29
	Damaturu	Maisandari/Waziri	Host Community	Maisandari	112	560	243	317	257	0	42
	Damaturu	Maisandari	Host Community	Maisandari	10	50	21	29	17	0	10
	Damaturu	Nayinawa	Host Community	Kandahar	45	270	113	157	136	5	45
	Damaturu	Nayinawa	Host Community	Kandahar	49	245	109	136	95	3	51
	Damaturu	Nayinawa	Host Community	Nayinawa	108	648	281	367	326	0	42
	Damaturu	Njiwal/Gwange	Host Community	Pompomari Jammaina	165	825	358	467	372	0	26
	Fika	Daya/Chana	Host Community	Kukar Gadu	8	45	21	24	28	0	32
	Fune	Damagum town	Host Community	Damagum	35	213	90	123	92	20	28
	Fune	Damagum town	Host Community	Sabon Gari	15	89	55	34	56	8	11
	Geidam	Asheikri	Host Community	Ajari	18	117	43	74	54	1	18
	Geidam	Asheikri	Host Community	Anguwar Area	56	364	145	219	194	5	56
	Geidam	Asheikri	Host Community	Ari Lawan St.	22	143	55	88	64	2	22
	Geidam	Asheikri	Host Community	Ganye Kura	12	78	26	52	31	0	12
	Geidam	Asheikri	Host Community	Anguwar Area	78	507	195	312	204	0	78
	Geidam	Asheikri	Host Community	Ari Lawan St.	42	278	103	175	128	0	42
	Geidam	Balle/Gallaba/Meleri	Host Community	Lawanti	49	318	123	195	165	4	49
	Geidam	Hausari	Host Community	Garin Zarami	84	533	206	327	272	7	84
	Geidam	Hausari	Host Community	Garin Zarami	24	156	60	96	66	3	24
	Geidam	Kawuri	Host Community	Anguwar Kanti	18	117	44	73	60	2	18
	Geidam	Kawuri	Host Community	Zanna Nur St.	68	442	163	279	236	3	68
	Geidam	Kawuri	Host Community	Zanna Nur Street	82	531	204	327	270	0	82
	Gujba	Bunigari/Lawanti	Host Community	Manyama/Malari	52	364	166	198	239	11	52
	Gujba	Gujba	Camp	Ngamma	54	378	159	219	234	0	57
	Gujba	Gujba	Host Community	Garin ltache	24	168	76	92	93	0	23
	Gujba	Buniyadi North/South	Host Community	Kasatchia	31	242	102	140	172	1	31
	Gulani	Bularafa	Host Community	Kukawa	177	1,152	506	646	638	0	138
	Gulani	Bumsa	Host Community	Bulumkutu/Tike	137	897	378	519	395	0	62
	Gulani	Njibulwa	Host Community	Bakin Tasha	20	130	58	72	73	0	10
	Gulani	Njibulwa	Host Community	Bulamari	11	72	30	42	34	0	8
	Gulani	Njibulwa	Host Community	Unguwankudu/Asibiti	17	110	49	61	54	1	13
	Karasawa	Jaji Maji	Host Community	Lawanti	38	198	90	108	83	0	198
	Machina	Dole	Host Community	Tsangaya	30	161	68	93	79	0	161
	Nangere	Dawasa/G.Baba	Host Community	Bakin Tasha	98	235	127	108	118	28	98
	Nangere	Degubi	Host Community	Degubi Primary	21	148	69	79	70	0	21
	Nangere	Kukuri/Chiromari	Host Community	Chiromari	68	163	74	89	92	10	68
	Nangere	Langawa/Darin	Host Community	Dagare	34	175	78	97	90	3	40
	Nangere	Langawa/Darin	Host Community	Fadawa	44	214	102	112	118	0	44
	Nangere	Nangere	Host Community	Anguwan Lamido	116	322	166	156	171	16	106
	Nguru	Hausari	Host Community	Zango	41	246	102	144	124	0	0
	Nguru	Nglaiwa	Host Community	Kantudu	25	132	58	74	79	0	0
	Potiskum	Dogo Nini	Host Community	Yan Kanwa Ramin Kasa	27	85	42	43	48	3	27
	Potiskum	Ngoin/Alaraba	Host Community	Jigawa	3	20	8	12	11	0	4
	Potiskum	Yerimaram/Garin Daye	Host Community	Babut	14	75	38	37	40	9	14
	Potiskum	Mamudo	Host Community	Mamudo	37	324	156	168	202	15	32
Potiskum	Yerimaram	Host Community	Fillin Allah	5	55	25	30	29	5	5	
Potiskum	Yerimaram	Host Community	Garin gaga B	12	107	54	53	69	3	12	
Potiskum	Yerimaram	Host Community	Gishuwa Daboa	6	66	29	37	42	0	6	
Tarmuwa	Babangida	Host Community	Bulama Abdul	51	306	159	147	164	0	13	
Tarmuwa	Biriri/Churokusko	Host Community	Biriri	58	359	179	180	244	0	35	
Tarmuwa	Lantaiwa	Host Community	Lantewa	13	78	35	43	44	3	0	
Yusufari	Jabuwa	Host Community	Fujiganari	14	84	41	43	32	9	14	
Yusufari	Mai-Malari	Host Community	Bula Jaji	29	154	67	87	79	4	29	
Total					2,574	15,042	6,465	8,577	7,737	194	2,327
Grand Total					8,181	37,414	16,209	21,205	21,639	334	4,989



Flooded area in Imburu, Numan LGA



Flooded area in Imburu, Numan LGA



Flooded area in Anguwan Maikano, Shelleng LGA



A damaged house in Dagona, Bade LGA



Flooded area in Damagum, Fune LGA



Flooded area in Dagona, Bade LGA



Flooded area in Ngbakowo, Lamurde LGA



A Damaged House in Hyambula, Lamurde LGA



Flooded area in Gulak LGA



Flooded area in Bilachi, Numan LGA



Flooded area in Bumsa, Gulani LGA



A Damaged House in Gujba, Gujba LGA



Flooded area in Banki, Bama LGA



Humanitarian Aid and Civil Protection

"When quoting, paraphrasing, or in any other way using the information mentioned in this report, the source needs to be stated appropriately as follows: "Source: Displacement Tracking Matrix (DTM) of the International Organization for Migration (IOM), Nigeria Mission, AUGUST 2022.""

For more information or to report an alert, please contact:
DTM Nigeria: iomnigeriadtm@iom.int
<https://displacement.iom.int/nigeria> ; <https://dtm.iom.int/nigeria>