

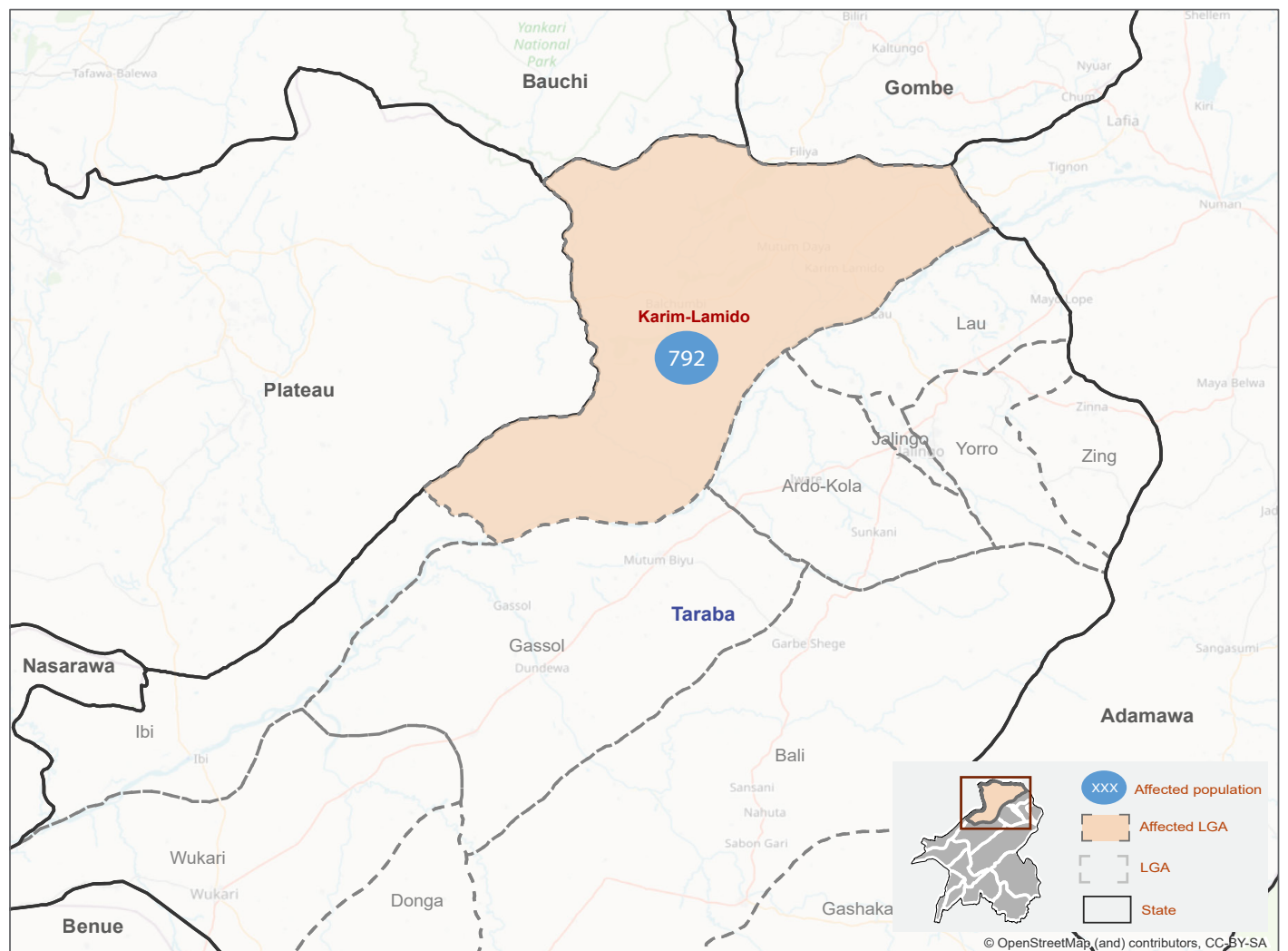
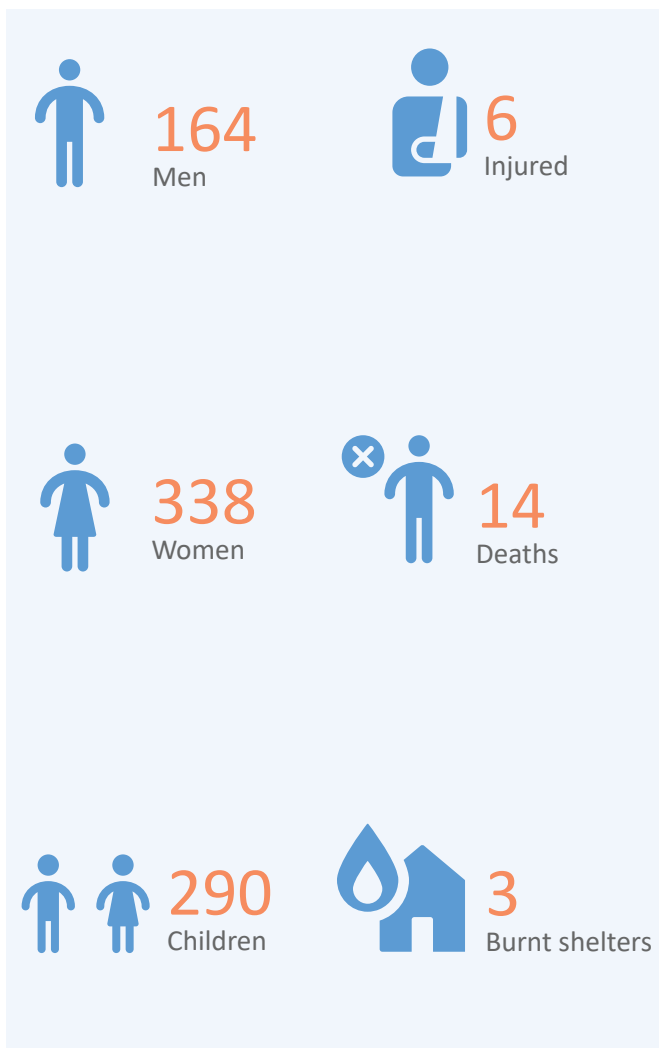


OVERVIEW

Surging communal violence between ethnic and religious groups, and long-standing conflicts between farming communities and nomadic herders are prevalent across north-east Nigeria. These conflicts are predominantly centered on disputes over land and cause great insecurity and widespread displacement across the region.

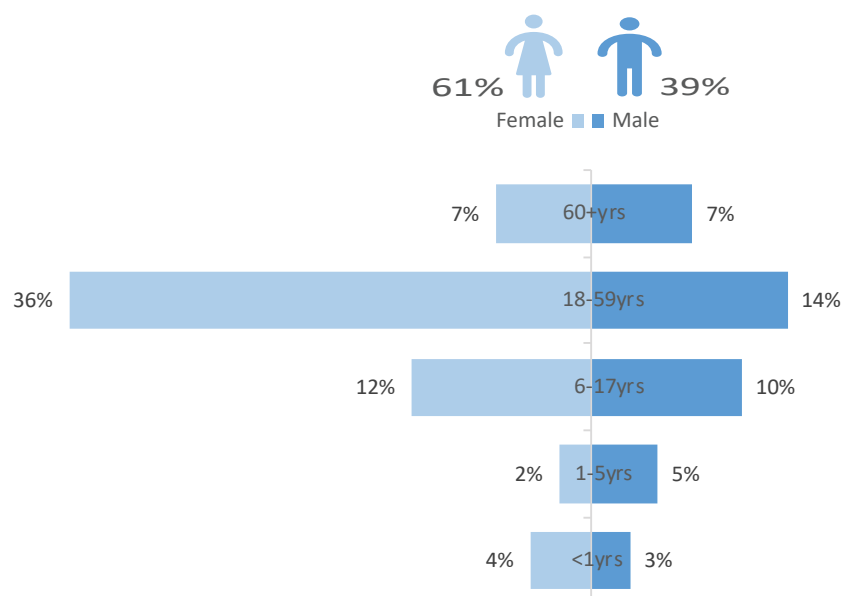
On 27 July 2021, there was a communal clash between farmers and herdsmen in Jen community of Jen ardido ward in Karim-Lamido LGA of Taraba State which has induced a large-scale displacement towards the neighbouring communities in same LGA. Following this event, rapid assessments were conducted by DTM (Displacement Tracking Matrix) field staff to inform the humanitarian community and government partners, and enable targeted response. Flash reports utilize direct observation and a broad network of key informants to gather representative data and collect information on the number, profile, and immediate needs of affected populations.

The recorded displacement involved a total of 792 individuals. A total of 20 casualties was recorded and 3 shelters were damaged. The affected population moved to neighbouring communities in search of safety. According to the rapid assessment, 34 percent of IDPs mentioned food as their primary need, followed by medical services (reported by 31% of IDPs), and NFI (reported by 13% of IDPs).

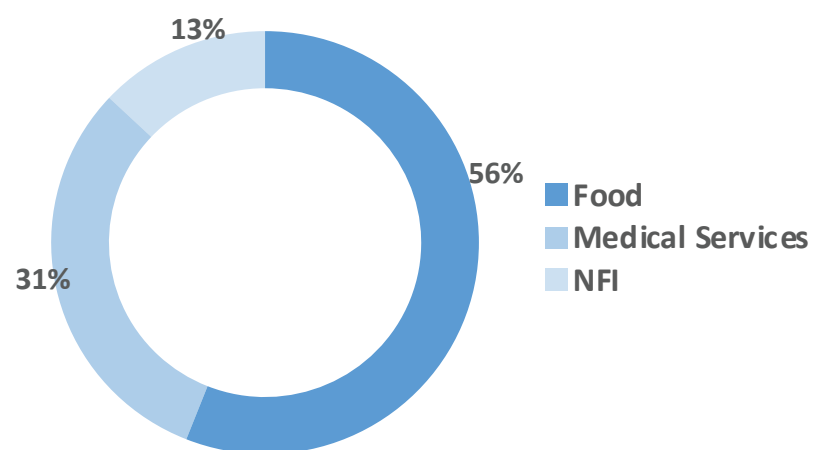


The map is for illustration purposes only. The depiction and use of boundaries, geographic names and related data shown are not warranted to be error free nor do they imply judgment on the legal status of any territory, or any endorsement or acceptance of such boundaries by IOM.

AGE CLASSIFICATION (FIG. 1)



MOST NEEDED ASSISTANCE (FIG. 2)



"When quoting, paraphrasing, or in any other way using the information mentioned in this report, the source needs to be stated appropriately as follows: "Source: Displacement Tracking Matrix (DTM) of the International Organization for Migration (IOM), July 2021.""