



# EMERGENCY TRACKING TOOL (ETT)

The DTM Emergency Tracking Tool (ETT) is deployed to track and to collect information on large and sudden population movements, provide frequent updates on the scale of displacement and quantify the affected population when needed. As a subcomponent of the Mobility Tracking methodology in Nigeria, ETT utilises direct observation and a broad network of key informants to capture best estimates of the affected population per location, enabling targeted humanitarian response planning.

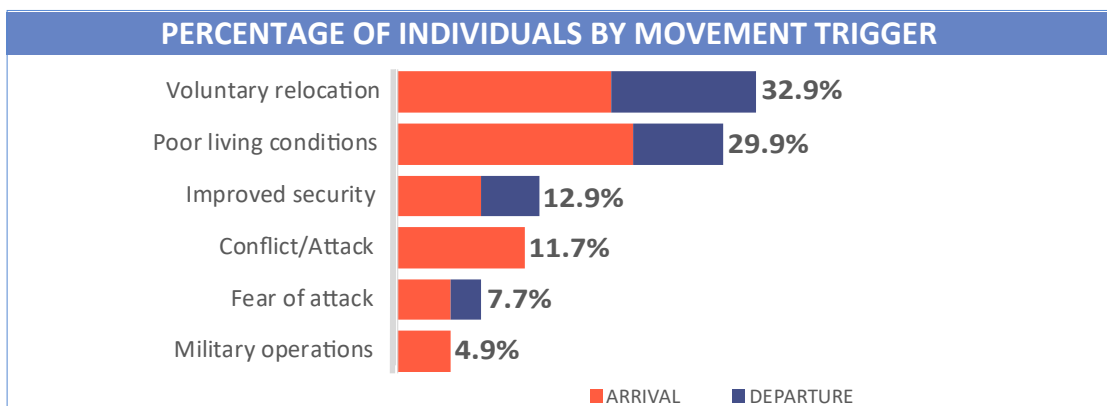
## ETT Report: No. 213 | 01 - 07 March 2021

MOVEMENTS	NEW ARRIVAL SCREENING BY NUTRITION PARTNERS
<p><b>Arrivals:</b> 1,431 individuals</p> <p><b>Departures:</b> 602 individuals</p>	<p><b>116</b> Children (6-59 months) screened for malnutrition</p> <p><b>MUAC category of screened children</b></p> <p>Green: 95   Yellow: 10   Red: 11</p>

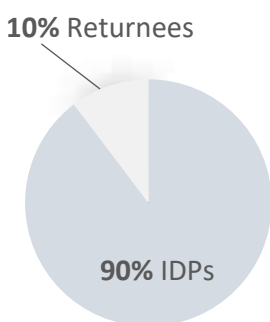
In the states Borno and Adamawa, a total of 2,033 movements were recorded, comprising 1,431 arrivals and 602 departures, between 01 and 07 March 2021. Arrivals were recorded at locations in Askira/Uba, Bama, Biu, Gwoza, Mobbar and Ngala Local Government Areas (LGAs) of the most conflict-affected state of Borno. Arrivals were also recorded in Demsa, Girei, Gombi, Hong, Lamurde, Madagali, Maiha, Michika, Mubi North, Mubi South, Numan, Song, Yola North and Yola South LGAs of Adamawa.

Departures were recorded in Askira/Uba, Damboa, Fufore, Gwoza, Hawul and Kala/Balge LGAs of Borno; Demsa, Fufore, Gombi, Madagali, Maiha, Michika, Mubi North, Mubi South, Numan, Song and Yola South LGAs of Adamawa.

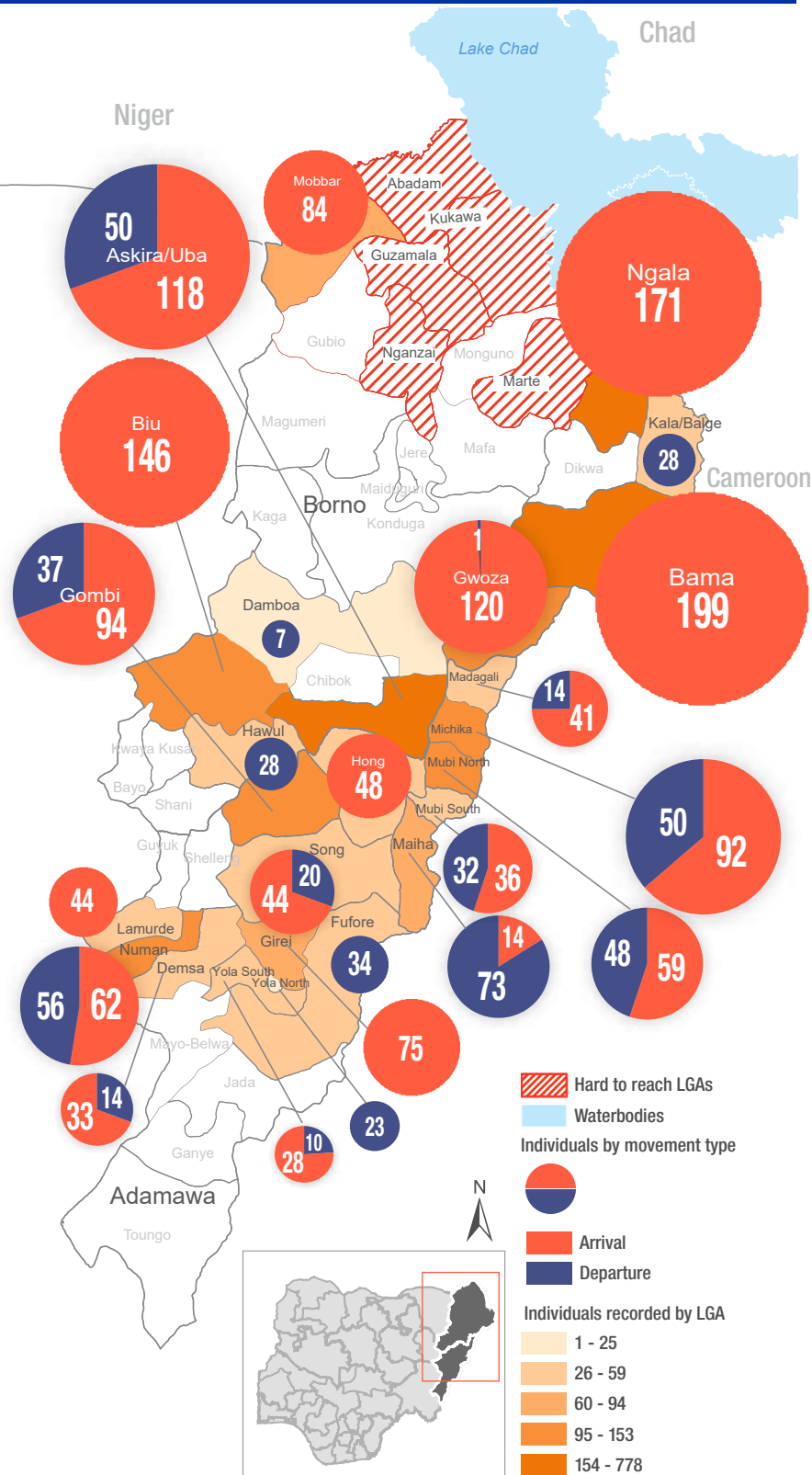
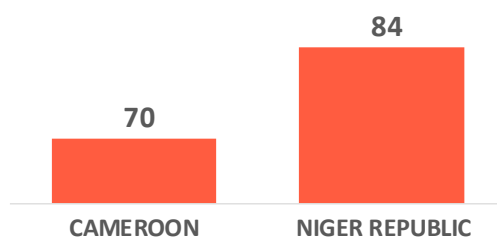
The ETT assessment identified the following movement triggers: voluntary relocation (668 individuals or 32.9%), poor living conditions (608 individuals or 29.9%), improved security (264 individuals or 12.9%), conflict/attack (234 individuals or 11.7%), fear of attack (157 individuals or 7.7%) and military operations (99 individuals or 4.9%).



### Affected Population



### Arrivals from neighbouring Countries



\* Movements in Kala/Balge were captured by ETT outreach staff in the LGA

## SUMMARY OF MAJOR MOVEMENTS

**Bama:** 199 arrivals were recorded in Bama LGA of Borno State. The arrivals included 129 individuals from Bama LGA of Borno State and 70 individuals from Marwa region in Cameroon. Fifty per cent of the movements recorded were due to military operations, 35 per cent of the movements recorded can be classified as voluntary relocation and 15 per cent of the movements occurred as a result of poor living conditions.

**Ngala:** 171 arrivals were recorded in Ngala LGA of Borno State. The arrivals recorded were 171 individuals from Kala/Balge LGA of Borno State. All individuals recorded relocated as a result of poor living conditions.

**Askira/Uba:** 118 arrivals and 50 departures were recorded in Askira/Uba LGA of Borno State. The arrivals included 77 individuals from Askira/Uba LGA of Borno State, 22 individuals from Mubi South and 19 individuals from Hong LGAs of Adamawa State. The departures included 28 individuals to Damboa LGA of Borno State, 15 individuals to Akko LGA of Gombe State and 7 to Madagali LGA of Adamawa State. Forty-two per cent of the movements were triggered by conflict/attack, 30 per cent relocated due to poor living conditions, 13 per cent relocated due to fear of attack, 11 per cent relocated as a result of improved security situation in areas of origin and 4 per cent relocated voluntarily.

**Biu:** 146 arrivals were recorded in Biu LGA of Borno State. The arrivals recorded were 146 individuals from Biu LGA of Borno State. All individuals recorded relocated due to conflict/attack.

## NEW ARRIVAL MALNUTRITION SCREENING SUMMARY (CHILDREN 6-59 MONTHS)

An exhaustive nutrition screening using mid-upper arm circumference (MUAC) and Oedema for acute malnutrition was conducted by sector partners for 116 children of 6-59 months. Of the 116 children screened, the MUAC reading indicated that 11 children were recorded in the red category, 10 children in the yellow category and 95 children in the green category. No case of oedema was reported in the 4 LGAs assessed.

The results also included 40 children who arrived from neighbouring countries (21 in Mobbar and 19 in Ngala). Of all the 40 children measured, 2 were recorded in the red category, 35 in the green category and the remaining 3 in the yellow category. All children found with acute malnutrition have been admitted for treatment. Please note, the data presented are not surveillance results and should be interpreted with caution.

LGA	MUAC Categories						Total
	Green (>12.5cm)		Yellow (11.5cm - 12.5cm)		Red (<11.5cm)		
	Inaccessible	Accessible	Inaccessible	Accessible	Inaccessible	Accessible	
Bama	20	0	6	0	9	0	35
Gwoza	0	23	0	1	0	0	24
Mobbar	0	18	0	3	0	0	21
Ngala	12	22	0	0	0	0	36
<b>Total</b>	<b>32</b>	<b>100</b>	<b>6</b>	<b>4</b>	<b>9</b>	<b>2</b>	<b>116</b>

■ Nourished

■ Moderate Acute Malnutrition (MAM)

■ Severe Acute Malnutrition (SAM)

Please note, the data presented are not surveillance results and should be interpreted with caution.

**Table 1. Details of movements by locations of assessment and locations of arrival / departure - only movements with at least 21 persons are listed below**

Tracking location			Movement location			ARRIVAL	DEPARTURE	GRAND TOTAL
STATE	LGA	WARD	STATE	LGA	WARD			
ADAMAWA	GIREI	DAMARE	ADAMAWA	DEMSA	BILLE	33	-	33
		WURO DOLE		GOMBI	GARKIDA	42	-	42
	GOMBI	GARKIDA	ADAMAWA	GIREI	WURO DOLE	-	42	42
		GOMBI NORTH		HONG	BANGSHIKA	-	31	31
	HONG	HILDI	ADAMAWA	GOMBI	GARKIDA	24	-	24
		HONG		SONG	SONG GARI	24	-	24
	LAMURDE	LAFIYA	ADAMAWA	GUYUK	DUMNA	26	-	26
	MADAGALI	K/WURO NGAYANDI	ADAMAWA	MUBI NORTH	DIGIL	23	-	23
	MAIHA	BELEL	ADAMAWA	MUBI NORTH	LOKUWA	-	31	31
	MICHIKA	BAZZA MARGHI	ADAMAWA	GOMBI	GOMBI NORTH	21	-	21
		MODA/DLAKA/GHENJUWA	ADAMAWA	BORNO	GWOZA	PULKA/BOKKO	-	50
	MUBI NORTH	DIGIL	ADAMAWA	MADAGALI	K/WURO NGAYANDI	-	23	23
		LOKUWA		MAIHA	BELEL	31	-	31
	MUBI SOUTH	GUDE	BORNO	ASKIRA UBA	LASSA	-	22	22
	NUMAN	IMBURU	GOMBE	BILLIRI	BILLIRI SOUTH	52	-	52
		SABON PEGI	ADAMAWA	LAMURDE	WADUKU	-	22	22
	SONG	SONG GARI	ADAMAWA	HONG	HONG	-	24	24
BORNO	ASKIRA/UBA	ASKIRA EAST	BORNO	DAMBOA	DAMBOA	-	28	28
		LASSA	ADAMAWA	MUBI SOUTH	MUJARA	22	-	22
		WAMDEO/GIWI	BORNO	ASKIRA UBA	MUSSA	38	-	38
	BAMA	BUDUWA/BULA CHIRABE	CAMEROON	MARWA	MORA	70	-	70
		SHEHURI/HAUSARI/MAIRI	BORNO	BAMA	SABSABWA/SOYE/BULONGU	31	-	31
	BIU	DUGJA	BORNO	BIU	DIPCHARI/JERE/DAR-JAMAL/KOTEMBE	98	-	98
		ZARAWUYAKU			GUR	65	-	65
	GWOZA	GWOZA TOWN GADAMAYO	ADAMAWA	MUBI NORTH	LOKUWA	62	-	62
	HAWUL	KYAWA-BUR/TANGA RUMTA	BORNO	DAMBOA	LOKUWA	29	-	29
					AZUR/MULTE/FORFOR	-	22	22
KALA BALGE	RANN "A"	BORNO	NGALA	NGALA WARD	-	22	22	
MOBBAR	DAMASAK CENTRAL	NIGER REPUBLIC	DIFFA	SHETTIMARI	-	21	21	
NGALA	NGALA WARD	BORNO	KALA BALGE	RANN "A"	84	-	84	
					171	-	171	

The depiction and use of boundaries, geographic names, and related data shown on maps and included in this report are not warranted to be error free nor do they imply judgment on the legal status of any territory, or any endorsement or acceptance of such boundaries by IOM.

When quoting, paraphrasing or in anyway using the information mentioned in this report, the source needs to be stated appropriately as follows: "Source: International Organization for Migration [month, year], Displacement Tracking Matrix (DTM)".

\* MUAC data is provided by UNICEF

For more information or to report an alert, please contact:

Henry Kwenin, DTM Project Coordinator: [hkwenin@iom.int](mailto:hkwenin@iom.int) | +234 903 8852 524

Dave Bercasio, Emergency Coordinator: [dbercasio@iom.int](mailto:dbercasio@iom.int) | +234 907 5070 001

DTM information products: <http://dtm.iom.int/nigeria>

