



# EMERGENCY TRACKING TOOL (ETT)

DTM Emergency Tracking Tool (ETT) is deployed to track and provide up-to-date information on sudden displacement and other population movements

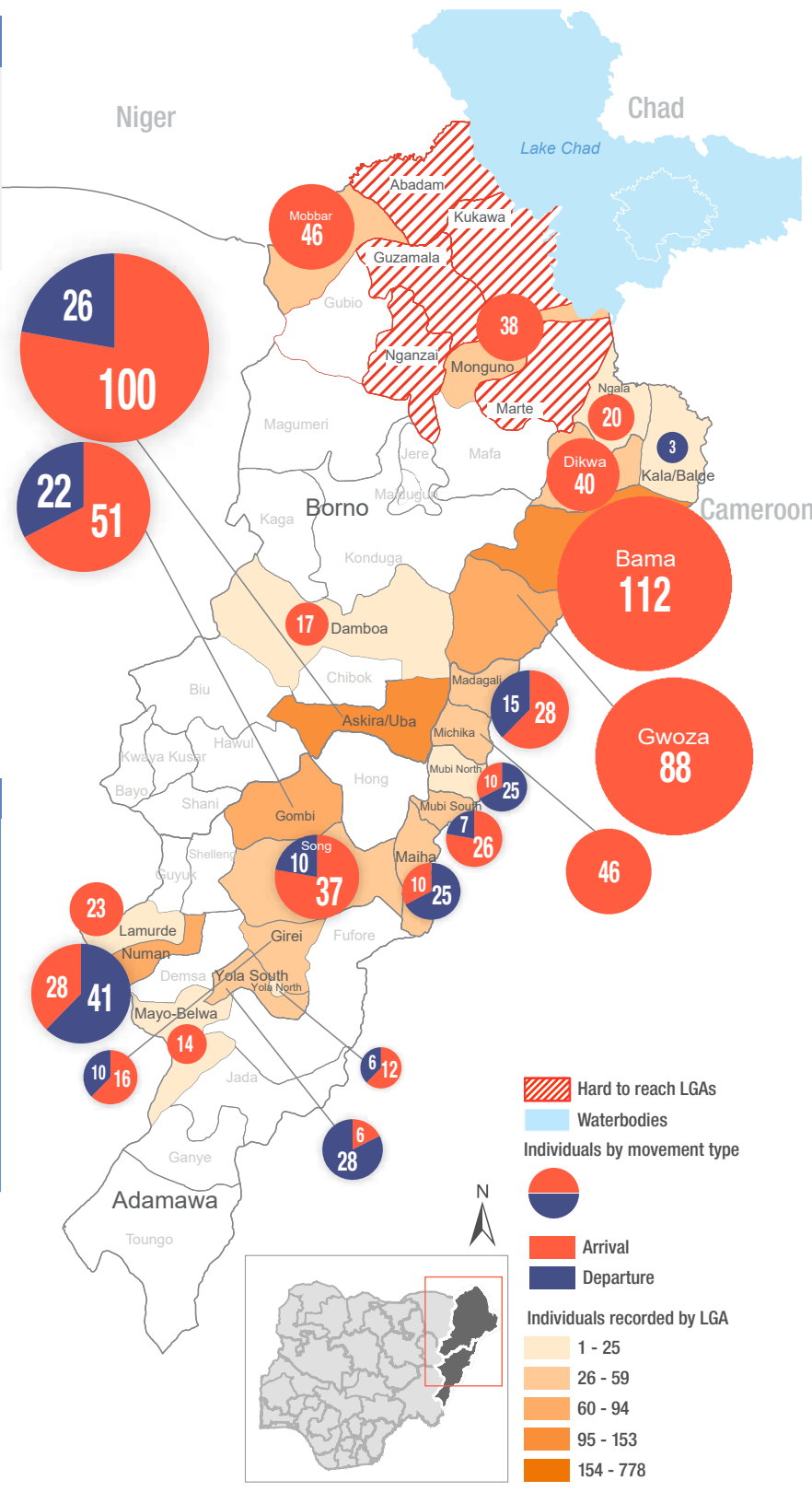
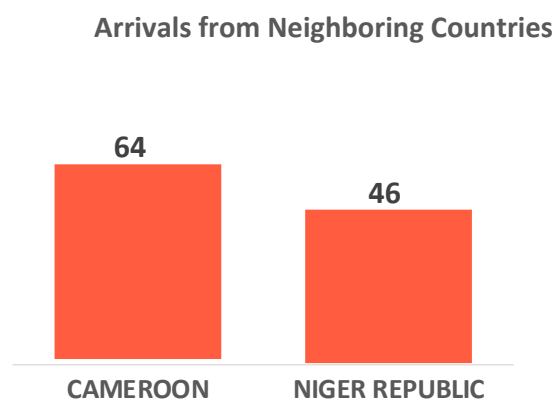
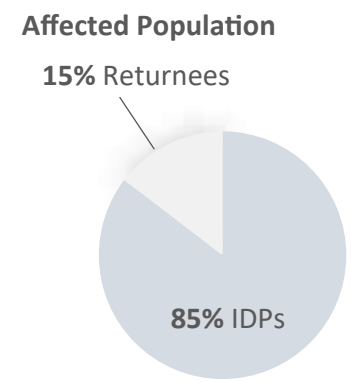
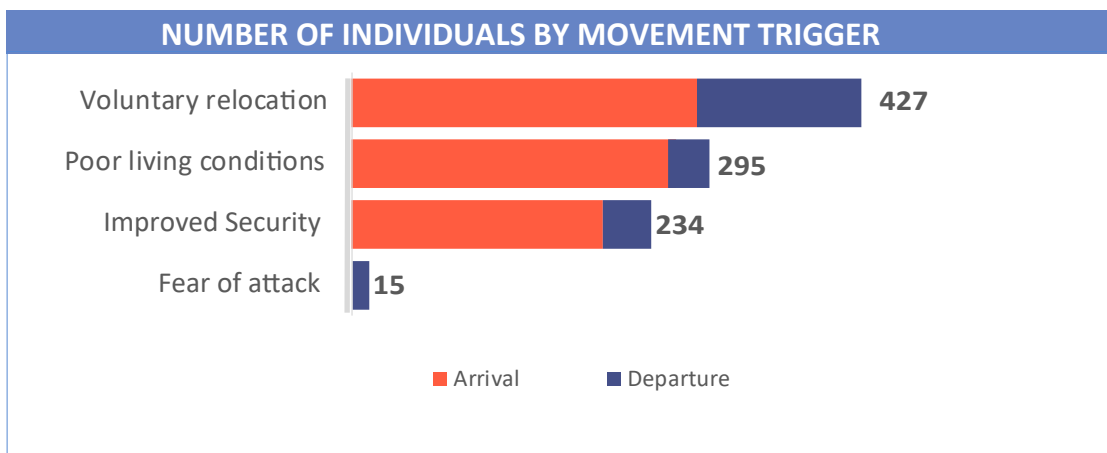
## ETT Report: No. 194 | 19 - 25 October 2020

| MOVEMENTS   | NEW ARRIVAL SCREENING BY NUTRITION PARTNERS  |
|---|--|
| <p><b>Arrivals:</b><br/>726 individuals</p> <p><b>Departures:</b><br/>245 individuals</p> | <p><b>56</b> Children (6-59 months) screened for malnutrition</p> <p><b>MUAC category of screened children</b></p> <p>Green: 47    Yellow: 7    Red: 2</p> |

A total of 971 movements were recorded, comprising 726 arrivals and 245 departures, between 19 and 25 October 2020. Arrivals were recorded at locations in Askira/Uba, Bama, Damboa, Dikwa, Gwoza, Mobbar, Monguno and Ngala Local Government Areas (LGAs) of the most-affected Nigerian State of Borno. Arrivals were also recorded in Girei, Gombi, Lamurde, Madagali, Maiha, Mayo Belwa, Michika, Mubi North, Mubi South, Numan, Song, Yola North and Yola South LGAs of the state of Adamawa.

Departures were recorded in Askira/Uba and Kala/Balge LGA of Borno; Girei, Gombi, Madagali, Maiha, Mubi North, Mubi South, Numan, Song, Yola North and Yola South LGAs of Adamawa.

ETT assessments identified the following movement triggers: voluntary relocation (44.0%), poor living conditions (30.4%), improved security (24.1%), and fear of attack (1.5%).



\* Movements in Kala/Balge were captured by ETT outreach staff in the LGA

## SUMMARY OF MAJOR MOVEMENTS

**Askira/Uba:** 100 arrivals and 26 departures were recorded in Askira/Uba LGA of Borno state. The arrivals included 77 from Askira/Uba and 10 from Maiduguri Metropolitan Council LGAs of Borno state, 9 from Girei and 4 from Hong LGAs of Adamawa state. The departures included 19 from Askira/Uba and 7 from Chibok LGAs of Borno state. 89 per cent of the movements recorded were as a result of improved security and 11 per cent were triggered by poor living conditions.

**Bama:** 112 arrivals were recorded in Bama LGA of Borno state. The arrivals included 79 from Jere and 2 from Bama LGAs of Borno state and 5 from were from Marwa region in Cameroon. 85 per cent of the movements recorded were triggered by poor living conditions and 15 per cent relocated voluntarily.

**Gwoza:** 88 arrivals were recorded in Gwoza LGA of Borno state. The arrivals included 16 from Gwoza, 9 from Bama and 5 from Jere LGAs of Borno state, 11 from Maiha LGA of Adamawa state, 8 from Abuja Metropolitan Area Council of the Federal Capital Territory and 39 from Marwa region in Cameroon. 85 per cent of the movements recorded were triggered by poor living conditions and 15 per cent relocated voluntarily.

**Gombi:** 51 arrivals and 22 departures were recorded in Gombi LGA of Adamawa state. The arrivals included 18 from Askira/Uba LGA of Borno state, 18 from Demsa and 15 from Michika LGAs of Adamawa state. All departures were from Guyuk of Adamawa state. 55 per cent of the movements recorded were as a result of voluntary relocation, 24 per cent were triggered by improved security while the remaining 21 per cent were due to poor living conditions.

## NEW ARRIVAL MALNUTRITION SCREENING SUMMARY (CHILDREN 6-59 MONTHS)

An exhaustive nutrition screening using mid-upper arm circumference (MUAC) and Oedema for acute malnutrition was conducted by Sector partners for 56 children of 6-59 months. Of the 56 children screened, the MUAC reading was 2 children (from Accessible areas) in the Red category, 7 were in the Yellow category and 47 were measured in the Green category. No case of Oedema was reported in the 4 LGAs that we received reports from.

The results also include 28 children from neighboring countries (5 in Bama, 7 in Gwoza, 14 in Mobbar and 2 in Ngala). Of all the 28 children measured, 2 children was recorded in the Red category, 20 in the Green category and the remaining 6 in the Yellow category. All children found with acute malnutrition have been admitted for treatment. Please note, the data presented are not surveillance results and should be interpreted with caution.

| LGA          | MUAC Categories |            |                          |            |               |            | Total     |
|--------------|-----------------|------------|--------------------------|------------|---------------|------------|-----------|
|              | Green (>12.5cm) |            | Yellow (11.5cm - 12.5cm) |            | Red (<11.5cm) |            |           |
|              | Inaccessible    | Accessible | Inaccessible             | Accessible | Inaccessible  | Accessible |           |
| Bama         | 5               | 6          | 0                        | 0          | 0             | 2          | 13        |
| Gwoza        | 6               | 18         | 0                        | 0          | 0             | 0          | 24        |
| Mobbar       | 0               | 9          | 0                        | 5          | 0             | 0          | 14        |
| Ngala        | 0               | 3          | 0                        | 2          | 0             | 0          | 5         |
| <b>Total</b> | <b>11</b>       | <b>36</b>  | <b>0</b>                 | <b>7</b>   | <b>0</b>      | <b>2</b>   | <b>56</b> |

■ Nourished

■ Moderate Acute Malnutrition (MAM)

■ Severe Acute Malnutrition (SAM)

Please note, the data presented are not surveillance results and should be interpreted with caution.

**Table 1. Details of movements by locations of assessment and locations of arrival / departure - only movements with at least 10 persons are listed below**

| Tracking location |                     |   | Movement location |            |                       | ARRIVAL | DEPARTURE | GRAND TOTAL |
|-------------------|---------------------|---|-------------------|------------|-----------------------|---------|-----------|-------------|
| STATE             | LGA                 | WARD  | STATE             | LGA        | WARD                  |         |           |             |
| ADAMAWA           | GIREI               | GIREI I   | ADAMAWA           | FUFURE     | PARIYA                | 16      | -         | 16          |
|                   | GOMBI               | GOMBI NORTH                                     | ADAMAWA           | MICHIKA    | MINKISI WURO NGIKI    | 15      | -         | 15          |
|                   |                     |   | BORNO             | ASKIRA/UBA | HUSARA/TAMPUL         | 18      | -         | 18          |
|                   |                     | GOMBI SOUTH                                     | ADAMAWA           | DEMSA      | DEMSA                 | 18      | -         | 18          |
|                   |                     |   | GUYUK             | DOMNA      | -                     | 22      | 22        |             |
|                   | LAMURDE             | WADUKU  | GOMBE             | GOMBE      | GOMBE                 | 23      | -         | 23          |
|                   | MADAGALI            | DUHU/SHUWA GULAK                                | ADAMAWA           | MADAGALI   | PALLAM                | -       | 15        | 15          |
|                   |                     |   | MAIHA             | MAYONGULI  | 13                    | -       | 13        |             |
|                   | MAYO BELWA          | MAYO BELWA                                      | ADAMAWA           | DEMSA      | BILLE                 | 14      | -         | 14          |
|                   | MICHIKA             | GARTA MICHIKA I MINKISI WURO NGIKI              | ADAMAWA           | MUBI NORTH | BETSO                 | 14      | -         | 14          |
|                   |                     |   |                   | YOLA SOUTH | MAKAMA A              | 11      | -         | 11          |
|                   |                     |   |                   | SONG       | SONG WAJE             | 12      | -         | 12          |
|                   | MUBI NORTH          | KOLERE  | ADAMAWA           | MUBI NORTH | VIMTIM                | 14      | -         | 14          |
|                   | MUBI SOUTH          | NASSARAWO                                       | ADAMAWA           | YOLA SOUTH | NAMTARI               | -       | 11        | 11          |
|                   | NUMAN               | IMBURU SABON PEGI                               | ADAMAWA           | LAMURDE    | WADUKU                | -       | 22        | 22          |
|                   |                     |   |                   | YOLA NORTH | JAMBUTU               | 11      | -         | 11          |
|                   |                     |   |                   | DEMSA      | KPASHAM               | 11      | -         | 11          |
|                   |                     |   |                   | GUYUK      | DOMNA                 | -       | 13        | 13          |
| SONG              | SONG GARI SONG WAJE | ADAMAWA   | HONG              | UBA        | -                     | 17      | 17        |             |
|                   |                     |   | SONG              | SONG GARI  | -                     | 11      | 11        |             |
| YOLA SOUTH        | DANDU               | ADAMAWA   | FUFURE            | BETI       | -                     | 11      | 11        |             |
| BORNO             | ASKIRA/UBA          | CHUL/RUMIRGO UBA WAMDEO / GIWI                  | BORNO             | ASKIRA/UBA | UBA                   | 42      | -         | 42          |
|                   |                     |   |                   |            | MUSSA                 | -       | 12        | 12          |
|                   |                     |   |                   |            | UBA                   | 35      | -         | 35          |
|                   | BAMA                | BUDUWA / BULA CHIRABE SHEHURI / HAUSARI / MAIRI | BORNO             | BAMA       | KUMSHE                | 12      | -         | 12          |
|                   |                     |   |                   |            | SABSABWA/SOYE/BULONGU | 14      | -         | 14          |
|                   | JERE                | SHUKURI   | 79                | -          | 79                    |         |           |             |
|                   | DAMBOA              | DAMBOA  | BORNO             | JERE       | MAIRI                 | 17      | -         | 17          |
|                   | DIKWA               | DIKWA   | BORNO             | MAIDUGURI  | MAISANDARI            | 21      | -         | 21          |
|                   | GWOZA               | GWOZA TOWN GADAMAYO                             | ADAMAWA           | MAIHA      | SORAU A               | 11      | -         | 11          |
|                   |                     | PULKA/BOKKO                                     | BORNO             | GWOZA      | DURE/WALA/WARABE      | 16      | -         | 16          |
|                   | CAMEROON            | MARWA   | MORA              | 30         | -                     | 30      |           |             |
|                   | MOBBAR              | DAMASAK   | NIGER REPUBLIC    | DIFFA      | SHETTIMARI            | 46      | -         | 46          |
|                   | MONGUNO             | MONGUNO   | BORNO             | NGANZAI    | GAJIRAM               | 38      | -         | 38          |
| NGALA             | NGALA WARD          | CAMEROON  | MARWA             | DARACK     | 20                    | -       | 20        |             |

The depiction and use of boundaries, geographic names, and related data shown on maps and included in this report are not warranted to be error free nor do they imply judgment on the legal status of any territory, or any endorsement or acceptance of such boundaries by IOM.

When quoting, paraphrasing or in anyway using the information mentioned in this report, the source needs to be stated appropriately as follows: "Source: International Organization for Migration [month, year], Displacement Tracking Matrix (DTM)".

\* MUAC data is provided by UNICEF

For more information or to report an alert, please contact:

Henry Kwenin, DTM Project Coordinator: [hkwenin@iom.int](mailto:hkwenin@iom.int) | +234 903 8852 524

Dave Bercasio, Emergency Coordinator: [dbercasio@iom.int](mailto:dbercasio@iom.int) | +234 907 5070 001

DTM information products: <http://dtm.iom.int/nigeria>

