



EMERGENCY TRACKING TOOL (ETT)

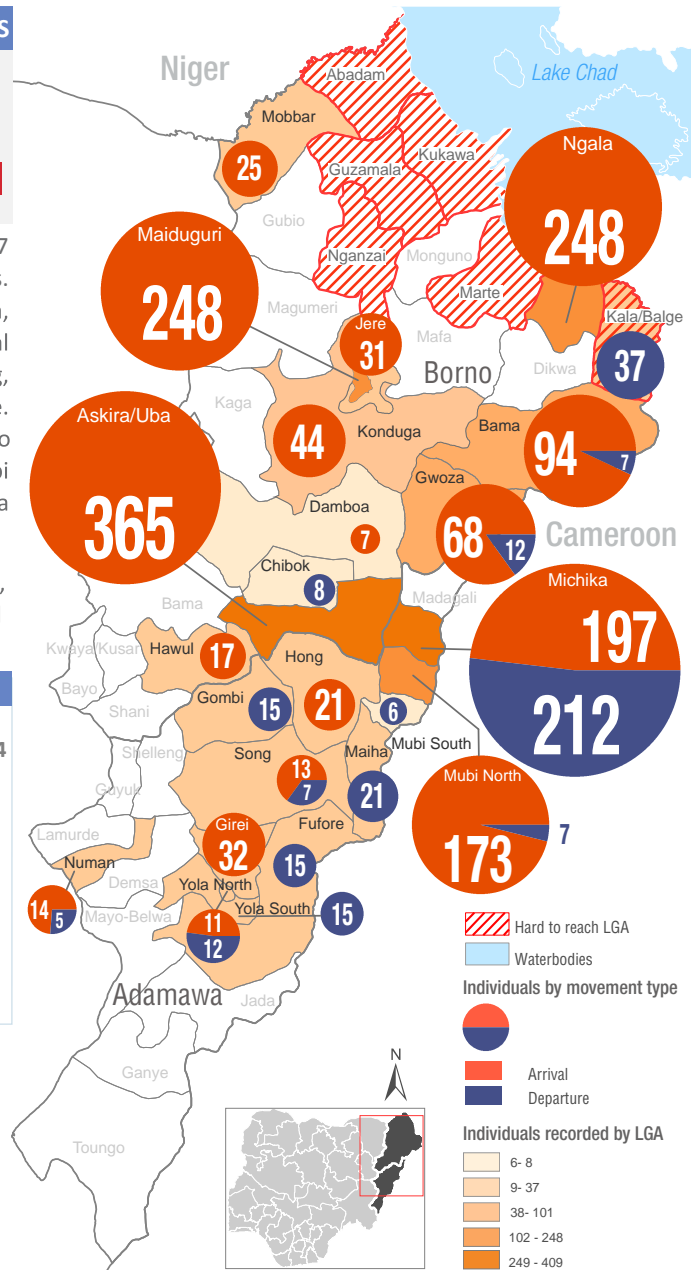
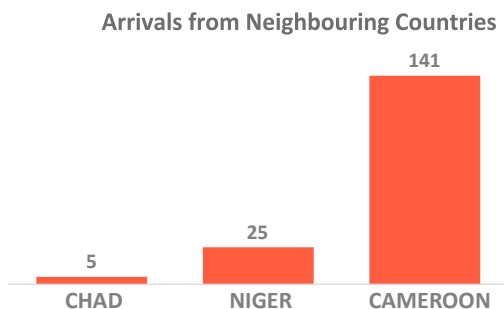
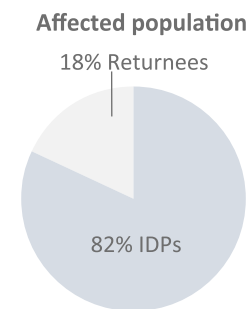
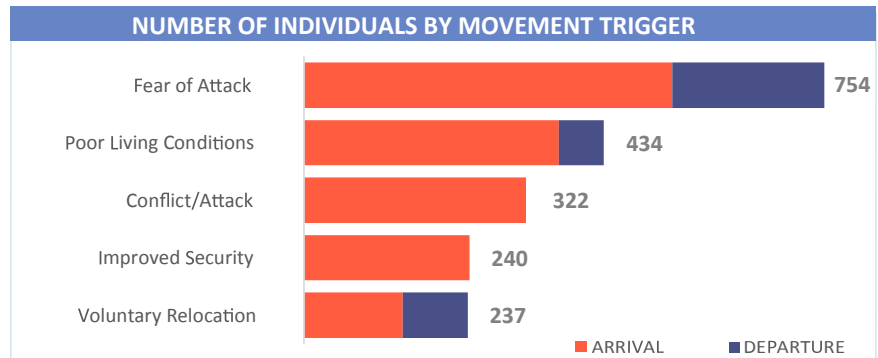
DTM Emergency Tracking Tool (ETT) is deployed to track and provide up-to-date information on sudden displacement and other population movements

ETT Report: No. 152 | 30 December 2019 - 5 January 2020

MOVEMENTS	NEW ARRIVAL SCREENING BY NUTRITION PARTNERS
<p>Arrivals: 1,608 individuals</p> <p>Departures: 379 individuals</p>	<p>141 Children (6-59 months) screened for malnutrition</p> <p>MUAC category of screened children</p> <p>Green: 118 Yellow: 17 Red: 6</p>

During the period of 30 December 2019 – 5 January 2020, a total of 1,987 movements were recorded, which composed of 1,608 arrivals and 379 departures. Arrivals were recorded at locations in Maiduguri Metropolitan Council, Askira/Uba, Bama, Damboa, Gwoza, Hawul, Jere, Konduga, Mobbar and Ngala Local Government Areas (LGAs) of Borno State. Arrivals were also recorded in Girei, Hong, Maiha, Michika, Mubi North, Numan, Song and Yola North LGAs of Adamawa State. Departures were recorded in Bama, Chibok, Gwoza and Kala/Balge LGAs of Borno State. Departures were also recorded in Fufore, Gombi, Maiha, Michika, Mubi North, Mubi South, Numan, Song, Yola North and Yola South LGAs of Adamawa State.

ETT assessments identified the following movement triggers: fear of attack (38%), poor living conditions (22%), conflict/attack (16%), improved security (12%) and voluntary relocation (12%).



* Movements in Kala/Balge were captured by ETT outreach staff in the LGA

SUMMARY OF MAJOR MOVEMENTS

- Michika:** 197 arrivals and 212 departures were recorded in Michika LGA of Adamawa State. The arrivals include 182 from Vi-Bokka ward of Michika LGA and 15 from Ngurore ward of Yola South LGA and were tracked in Michika II. The 212 departures were from Madzi ward. The arrivals were all due to improved security while the departures were all due to fear of attack.
- Askira/Uba:** 365 arrivals were recorded in Askira/Uba LGA of Borno State. The arrivals include 196 from Michika I ward of Michika LGA of Adamawa State and were tracked in Uba ward. Other arrivals include 147 from Lassa ward and 22 from Husara/Tampul ward and were tracked in Uba and Kopa/Multhafu wards respectively. 54% of the new arrivals reported to have relocated due to the ongoing conflict, 40% due to Fear of attack while 6% were reportedly due to Improved security.
- Ngala:** 248 arrivals were recorded in Ngala LGA of Borno State. The arrivals include 140 from Rann "A" ward and 108 from Hile-Alifa of Cameroon. The arrivals were all due to poor living conditions.
- Maiduguri:** 248 arrivals were recorded in Maiduguri Metropolitan Council of Borno State. The 248 arrivals were from Dalori/Wanori ward of Konduga LGA and were tracked at NYSC Camp in Maisandari ward of Maiduguri Metropolitan Council. The arrivals were all due to fear of attack.

NEW ARRIVAL MALNUTRITION SCREENING SUMMARY (CHILDREN 6-59 MONTHS)

An exhaustive nutrition screening using monitoring of symptoms of acute malnutrition mid upper arm circumference (MUAC) and Oedema was conducted by Nutrition Sector partners for 141 children of 6-59 months. Of the 141 children screened, the MUAC reading recorded 6 children (5 from accessible and 1 from an In-accessible area) in the Red category, 17 in the Yellow category and 118 measured in the Green category. No cases of Oedema were reported in the 4 LGAs that reports were received from.

The results also include 70 children from neighbouring Cameroon, Chad and Republic of Niger (1 child moved to Bama, 0 to Gwoza, 8 to Mobbar and 61 moved to Ngala); of all the 70 children measured, two (2) children were in the red category, 58 in the green category and 10 measured in the yellow category. All children found with acute malnutrition have been admitted for treatment.

Please note, the data presented are not surveillance results and should be interpreted with caution.

LGA	MUAC Categories						Total
	Green (≥12.5cm)		Yellow (11.5 cm - 12.5cm)		Red (<11.5cm)		
	Inaccessible	Accessible	Inaccessible	Accessible	Inaccessible	Accessible	
Bama	21	8	0	1	1	1	32
Gwoza	1	15	0	1	0	0	17
Mobbar	0	7	0	1	0	0	8
Ngala	0	66	0	14	0	4	84
Total	22	96	0	17	1	5	141

■ Nourished
 ■ Moderate Acute Malnutrition (MAM)
 ■ Severe Acute Malnutrition (SAM)

Table 1. Details of movements by locations of assessment and locations of arrival / departure - only movements with at least 8 persons are listed below

Tracking Location			Movement Location						
STATE	LGA	WARD	STATE2	LGA2	WARD2	ARRIVAL	DEPARTURE	Grand Total	
ADAMAWA	FUFORE	RIBADU	ADAMAWA	YOLA SOUTH	BOLE/YOLDE PATE	-	15	15	
	GIREI	GIREI I	ADAMAWA	FUFORE	PARIYA	18	-	18	
			TARABA	LAU	MAYO LOPE	14	-	14	
	GOMBI	GOMBI NORTH	ADAMAWA	MUBI NORTH	KOLERE	-	15	15	
	HONG	BANSHIKA	ADAMAWA	HONG	HILDI	21	-	21	
	MAIHA	SORAU A	ADAMAWA	MAIHA	SORAU B	-	21	21	
	MICHIKA	MADZI	ADAMAWA	GOMBI	GOMBI SOUTH	-	73	73	
				MUBI NORTH	BETSO	-	139	139	
				MICHIKA	VI-BOKKA	182	-	182	
	MUBI NORTH	MADZI	ADAMAWA	MUBI NORTH	NGURORE	15	-	15	
				MUBI NORTH	MADZI	139	-	139	
	BORNO	ASKIRA/UBA	KOLERE	ADAMAWA	MICHIKA	MINKISI WURO NGIKI	34	-	34
				ADAMAWA	YOLA NORTH	KAREWA	14	-	14
		SONG	SONG GARI	ADAMAWA	MADAGALI	SHUWA/DUHU	13	-	13
YOLA NORTH		JAMBTU	ADAMAWA	MICHIKA	MODA/DLAKA	11	12	23	
YOLA SOUTH		NAMTARI	BORNO	MAIDUGURI	MAIRE	-	8	8	
BAMA		SHEHURI / HAUSARI / MAIRI	BORNO	ASKIRA/UBA	HUSARA/TAMPUL	22	-	22	
				ADAMAWA	MICHIKA	MICHIKA I	196	-	196
				BORNO	ASKIRA/UBA	LASSA	147	-	147
				CAMEROON	MAYO-SAVA	MORA	9	-	9
CHIBOK		KORONGILUM	BORNO	BAMA	ABBARAM	12	-	12	
	BAMA			BUDUWA / BULA CHIRABE	15	-	15		
GWOZA	PULKA BOKKO	BORNO	BAMA	GONIRI	22	-	22		
			CAMEROON	MAYO-SAVA	MORA	23	-	23	
			YOBE	GUJBA	BONI YADI	8	-	8	
			BORNO	ASKIRA UBA	CHULL/RUMIRGO	10	-	10	
HAWUL	KWAJAJFA/HANG	BORNO	ASKIRA UBA	CHULL/RUMIRGO	10	-	10		
JERE	OLD MAIDUGURI	BORNO	KONDUGA	AUNO/CHABBAL	26	-	26		
KALA/BALGE	RANN "A"	BORNO	NGALA	NGALA	-	37	37		
KONDUGA	DALORI/WANORI	BORNO	KONDUGA	DALORI/WANORI	44	-	44		
MAIDUGURI	MAISANDARI	BORNO	KONDUGA	DALORI/WANORI	248	-	248		
MOBBAR	DAMASAK CENTRAL	REPUBLIC OF NIGER	DIFFA	CHEMIMARI	25	-	25		
NGALA	NGALA	BORNO	KALA/BALGE	RANN "A"	140	-	140		
		CAMEROON	LOGONE-ET-CHARI	HILE-ALIFA	108	-	108		

The depiction and use of boundaries, geographic names, and related data shown on maps and included in this report are not warranted to be error free nor do they imply judgment on the legal status of any territory, or any endorsement or acceptance of such boundaries by IOM. MUAC data is provided by UNICEF.

For more information or to report an alert, please contact:

Henry Kwenin, DTM Project Coordinator: hkwenin@iom.int | +234 903 8852 524

David Bercasio, Emergency Coordinator: dbercasio@iom.int | +234 907 5070 001

DTM information products: <http://nigeria.iom.int/dtm>

