



# EMERGENCY TRACKING TOOL (ETT)

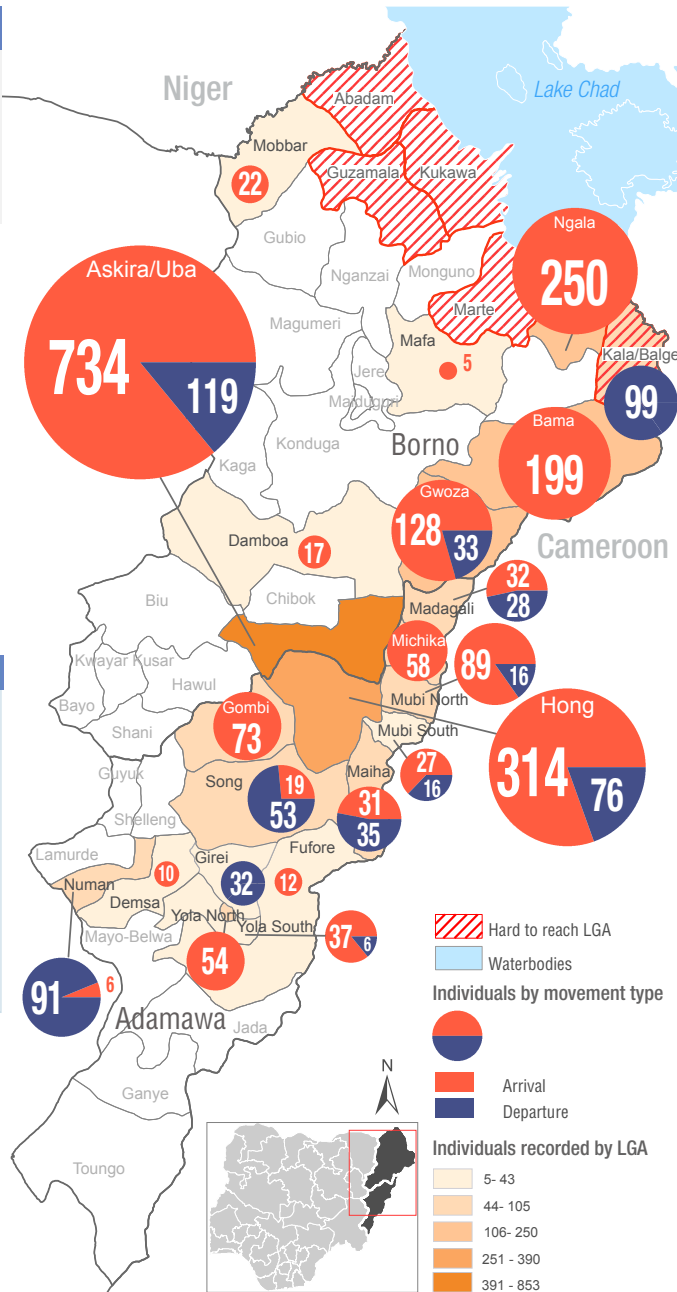
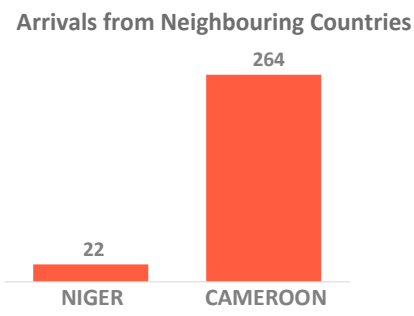
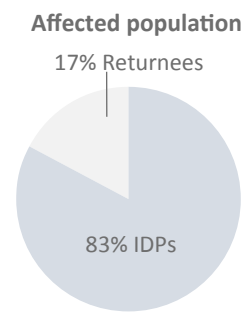
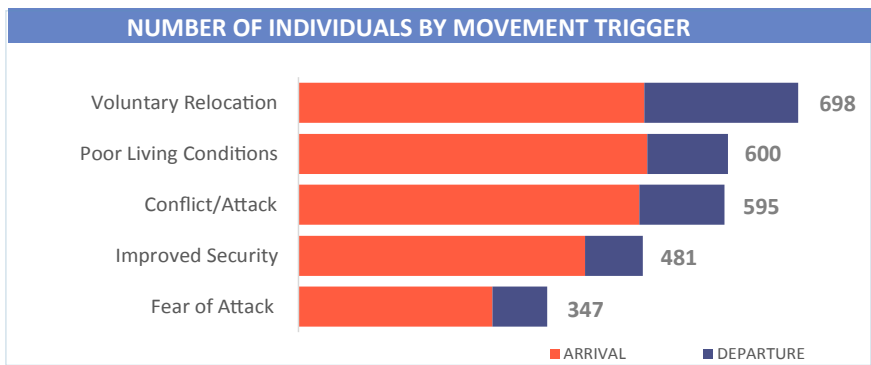
DTM Emergency Tracking Tool (ETT) is deployed to track and provide up-to-date information on sudden displacement and other population movements

## ETT Report: No. 149 | 9 - 15 December 2019

MOVEMENTS	NEW ARRIVAL SCREENING BY NUTRITION PARTNERS
<p><b>Arrivals:</b> 2,117 individuals</p> <p><b>Departures:</b> 604 individuals</p>	<p><b>147</b> Children (6-59 months) screened for malnutrition</p> <p><b>MUAC category of screened children</b></p> <p>Green: 134   Yellow: 12   Red: 1</p>

During the period of 9 – 15 December 2019, a total of 2,721 movements were recorded, which composed of 2,117 arrivals and 604 departures. Arrivals were recorded at locations in Askira/Uba, Bama, Damboa, Gwoza, Mafa, Mobbar and Ngala Local Government Areas (LGAs) of Borno State. Arrivals were also recorded in Demsa, Fufore, Gombi, Hong, Madagali, Maiha, Michika, Mubi North, Mubi South, Numan, Song, Yola North and Yola South LGAs of Adamawa State. Departures were recorded in Askira/Uba, Gwoza and Kala/Balge LGAs of Borno State. Departures were also recorded in Girei, Hong, Madagali, Maiha, Mubi North, Mubi South, Numan, Song and Yola South LGAs of Adamawa State.

ETT assessments identified the following movement triggers: voluntary relocation (26%), poor living conditions (22%), conflict/attack (22%), improved security (17%) and fear of attack (13%).



\* Movements in Kala/Balge were captured by ETT outreach staff in the LGA

## SUMMARY OF MAJOR MOVEMENTS

**Askira/Uba:** 734 arrivals and 119 departures were recorded in Askira/Uba LGA of Borno State. The arrivals include 38 from Biu ward of Biu LGA, 320 from Chull/Rumirgo ward, 75 from Mussa ward, 56 from Uba ward and 4 from Husara/Tampul ward. Other arrivals include 179 from Tarmuwa LGA of Yobe State, 34 from Mubi North and 28 from Madagali LGAs of Adamawa State. The departures include 86 from Chull/Rumirgo ward and 33 from Wamdeo/Giwi ward. 44% of the new arrivals reported to have relocated due to the ongoing conflict/attack, 35% due to fear of attack, 17% due to improved security while 10% were reportedly voluntarily. The departures were all due to the ongoing conflict/attack.

**Hong:** 314 arrivals and 76 departures were recorded in Hong LGA of Adamawa State. The arrivals include 86 from Askira Uba LGA of Borno State. Other arrivals include 111 from Hong ward, 103 from Garaha ward and 14 from Kwarhi ward and were tracked in Daksiri, Banshika and Thilbang ward. The 76 departures were from Daksiri ward. 69% of the new arrivals reported to have relocated due to improved security, 27% due to the ongoing conflict/attack while 4% were reportedly voluntarily. The departures were all due to fear of attack.

**Ngala:** 250 arrivals were recorded in Ngala LGA of Borno State. The arrivals include 118 from Rann "A" ward of Kala/Balge LGA, 65 from Makary, 34 from Logone-Birni and 33 from Kousseri of Cameroon. The arrivals were all due to poor living conditions.

**Bama:** 199 arrivals were recorded in Bama LGA of Borno State. The arrivals include 50 from Buduwa/Bula Chirabe ward and 26 from Abbaram ward and were tracked in Shehuri/Hausari/Mairi ward. Other arrivals include 34 from Pulka Bokko ward of Gwoza LGA, 41 from Kolofata, 25 from Mokolo, 19 from Waza and 4 from Mora of Cameroon. 80% of the new arrivals reported to have relocated voluntarily, 13% due to poor living conditions while 7% were reportedly due to the ongoing conflict/attack.

IOM's Emergency Tracking Tool (ETT) is deployed in Nigeria's northeastern states. Only Local Government Areas (LGAs) in which the IDP population changed since the latest DTM round of assessments are represented in this report. The data has been collected by DTM staff deployed at the locations listed and cross-checked with the partners present on the ground.

## NEW ARRIVAL MALNUTRITION SCREENING SUMMARY (CHILDREN 6-59 MONTHS)

An exhaustive nutrition screening using monitoring of symptoms of acute malnutrition mid upper arm circumference (MUAC) and Oedema was conducted by Nutrition Sector partners for 147 children of 6-59 months. Of the 147 children screened, the MUAC reading recorded 1 child (from an inaccessible area) in the Red category, 12 in the Yellow category and 134 measured in the Green category. No cases of Oedema were reported in the 4 LGAs that we received reports from.

The results also include 68 children from neighbouring Cameroon and Republic of Niger (26 children moved to Bama, 4 to Gwoza, 4 to Mobbar and 34 moved to Ngala); of all the 68 children measured, one child was in the red category, 60 in the green category and 7 measured in the yellow category. All children found with acute malnutrition have been admitted for treatment.

*Please note, the data presented are not surveillance results and should be interpreted with caution.*

LGA	MUAC Categories						Total
	Green (≥12.5cm)		Yellow (11.5 cm - 12.5cm)		Red (<11.5cm)		
	Inaccessible	Accessible	Inaccessible	Accessible	Inaccessible	Accessible	
Bama	12	41	1	2	0	0	56
Gwoza	0	32	0	3	0	0	35
Mobbar	0	2	0	2	0	0	4
Ngala	0	47	0	4	0	1	52
<b>Total</b>	<b>12</b>	<b>122</b>	<b>1</b>	<b>11</b>	<b>0</b>	<b>1</b>	<b>147</b>

■ Nourished

■ Moderate Acute Malnutrition (MAM)

■ Severe Acute Malnutrition (SAM)

**Table 1. Details of movements by locations of assessment and locations of arrival / departure - only movements with at least 20 persons are listed below**

Tracking Location			Movement Location						
STATE	LGA	WARD	STATE2	LGA2	WARD2	ARRIVAL	DEPARTURE	Grand Total	
ADAMAWA	GOMBI	GOMBI SOUTH	ADAMAWA	GIREI	DAMARE	20	-	20	
	HONG	BANSHIKA	ADAMAWA	HONG	GARAHA	103	-	103	
		DAKSIRI			HONG	-	76	76	
		UBA	BORNO	ASKIRA UBA	CHULL/RUMIRGO	86	-	86	
		MADAGALI	DUHU/SHUWA	ADAMAWA	MAIHA	SARAU B	32	-	32
	KIRCHINGA/WUROGAYANDI		BORNO	ASKIRA UBA	KOPA/MULTHAFU	-	28	28	
	MICHIKA	MICHIKA I	ADAMAWA	MICHIKA	SINA KAMALE	26	-	26	
	MUBI NORTH	DIGIL	BORNO	ASKIRA UBA	CHULL/RUMIRGO	29	-	29	
		LOKUWA			UBA	36	-	36	
	MUBI SOUTH	LAMURDE	BORNO	ASKIRA UBA	CHULL/RUMIRGO	27	-	27	
NUMAN	NUMAN I	ADAMAWA	NUMAN	BOLKI	-	52	52		
SONG	SONG WAJE	ADAMAWA	JADA	NASSARAWO KOMA	-	20	20		
BORNO	ASKIRA/UBA	CHULL/RUMIRGO	ADAMAWA	HONG	UBA	-	86	86	
		HAUSARI/ZADAWA	BORNO	ASKIRA/UBA	UBA	56	-	56	
		KOPA/MULTHAFU	ADAMAWA	MADAGALI	K/WURO NGYANDI	320	-	320	
		NGOHI	BORNO	BIU	BIU	28	-	28	
		UBA	ADAMAWA	MUBI NORTH	LOKUWA	38	-	38	
		WAMDEO / GIWI		MUBI SOUTH	LAMURDE	34	-	34	
		BAMA	BUDUWA / BULA CHIRABE	CAMEROON	MAYO-TSANAGA	MOKOLO	-	33	33
				BORNO	BAMA	ABBARAM	75	-	75
	SHEHURI / HAUSARI / MAIRI		BORNO	BAMA	BUDUWA / BULA CHIRABE	179	-	179	
			GWOZA	PULKA BOKKO	25	-	25		
			CAMEROON	MAYO-SAVA	KOLOFATA	26	-	26	
	GWOZA	GWOZA WAKANE/BULABULIN	ADAMAWA	FUFURE	GURIN	50	-	50	
			BORNO	BAMA	SHEHURI / HAUSARI / MAIRI	34	-	34	
		PULKA BOKKO	CAMEROON	MAYO-SAVA	MORA	41	-	41	
			TARABA	ARDO-KOLA	ARDO-KOLA	46	-	46	
	KALA/BALGE	RANN "A"	BORNO	NGALA	NGALA	-	33	33	
	MOBBAR	DAMASAK	NIGER	DIFFA	CHETIMARI	26	-	26	
	NGALA	NGALA	BORNO	KALA/BALGE	RANN "A"	24	-	24	
			CAMEROON	LOGONE-ET-CHARI	LOGONE-BIRNI	-	99	99	
					KOUSSERI	118	-	118	
					MAKARY	22	-	22	

The depiction and use of boundaries, geographic names, and related data shown on maps and included in this report are not warranted to be error free nor do they imply judgment on the legal status of any territory, or any endorsement or acceptance of such boundaries by IOM. MUAC data is provided by UNICEF

For more information or to report an alert, please contact:

Henry Kwenin, DTM Project Coordinator: [hkwenin@iom.int](mailto:hkwenin@iom.int) | +234 903 8852 524

Dave Bercasio, Emergency Coordinator: [dbercasio@iom.int](mailto:dbercasio@iom.int) | +234 907 5070 001

DTM information products: <http://nigeria.iom.int/dtm>

