

DISPLACEMENT TRACKING MATRIX — NIGERIA EMERGENCY TRACKING TOOL (ETT)

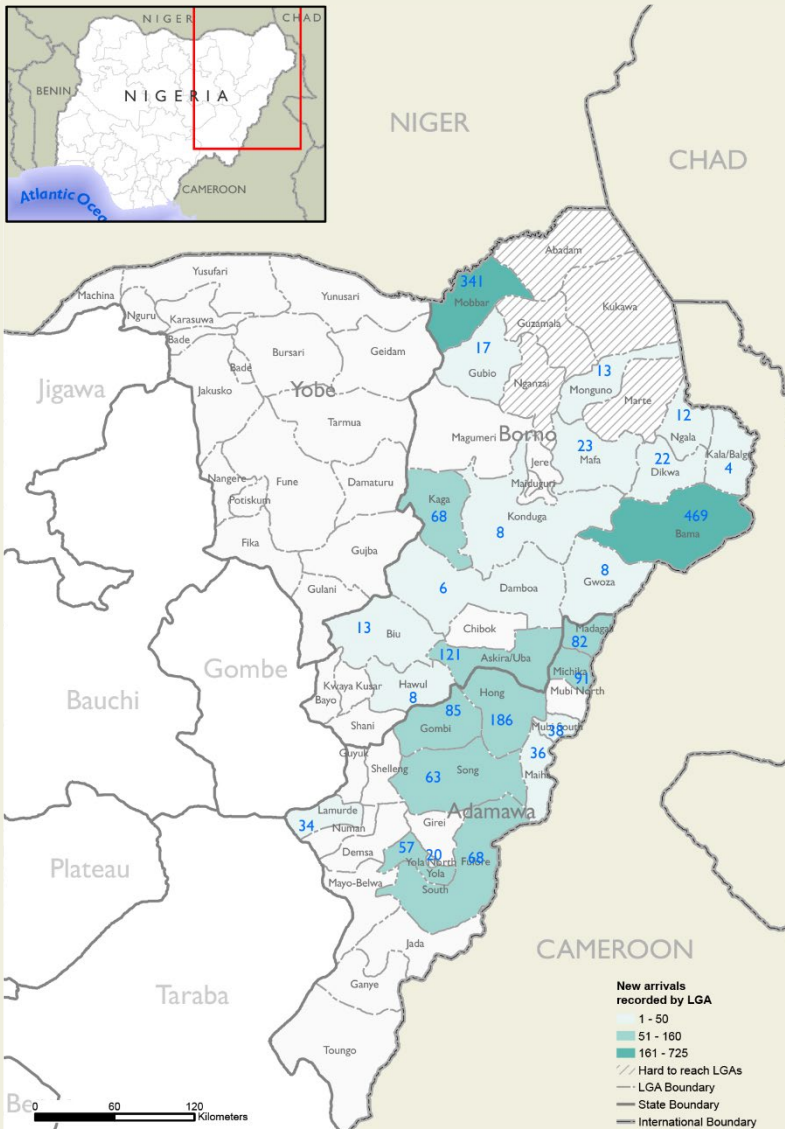
SUMMARY OF MOVEMENTS IN BORNO AND ADAMAWA STATES, 08 – 14 July 2024

DASHBOARD: 388

DATA COLLECTION: Week 27, 2024

DATE OF PUBLICATION: 19 July 2024

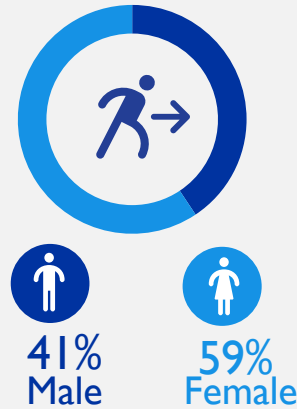
OVERVIEW OF DISPLACEMENTS



KEY FIGURES



GENDER BREAKDOWN



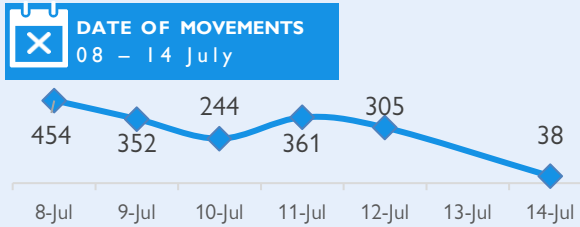
METHODOLOGY

The DTM Emergency Tracking Tool (ETT) is deployed to track and collect information on large and sudden population movements, provide frequent updates on the scale of displacement and quantify the affected population when needed. As a sub-component of the mobility tracking methodology in Nigeria, ETT utilizes direct observations and a broad network of key informants to capture the best estimates of the affected population per location, enabling targeted humanitarian response planning.

LIMITATIONS

The ETT figures reported are not cumulative of all the affected persons thus far but rather provide a snapshot of the current displacement situation on the date indicated. The data and information reported on this dashboard are related solely to the movements caused by the triggers on page two between 08 – 14 July.

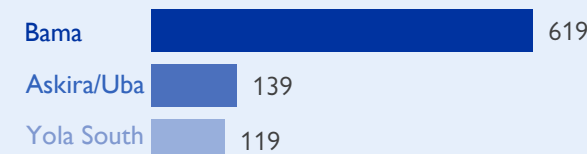
DISPLACEMENT EVOLUTION



TOP REPORTED NEEDS*



TOP AREAS OF ORIGIN



ALERT SUMMARY

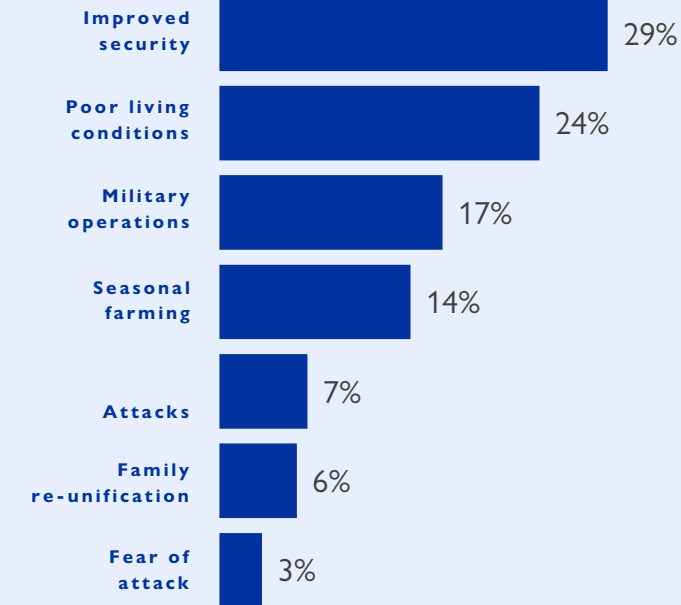
Between 08 and 14 July 2024, a total of 1,754 new arrivals were recorded at locations in Adamawa and Borno states. The new arrivals were recorded at locations in Askira/Uba, Bama, Dikwa, Gubio, Gwoza, Kaga, Kala Balge, Mobbar and Ngala Local Government Areas (LGAs) of the most conflict-affected Borno State, and in Demsa, Fufore, Gombi, Hong, Lamurde, Madagali, Michika, Mubi North, Mubi South, Song, Yola North and Yola South LGAs of Adamawa State.

ETT assessments identified the following movement triggers: improved security (512 individuals or 29%), poor living conditions (422 individuals or 24%), military operation (294 individuals or 17%), seasonal farming (252 individuals or 14%), attack (116 individuals or 7%), family re-unification (102 individuals or 6%) and fear of attack (56 individuals or 3%).

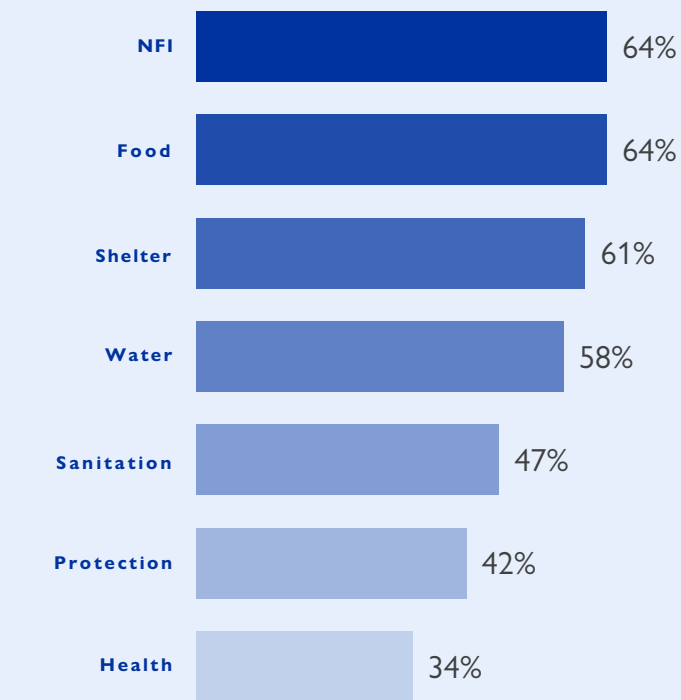
This map is for illustration purposes only. Names and boundaries on this map do not imply official endorsement or acceptance by IOM.

*Multiple-choice response

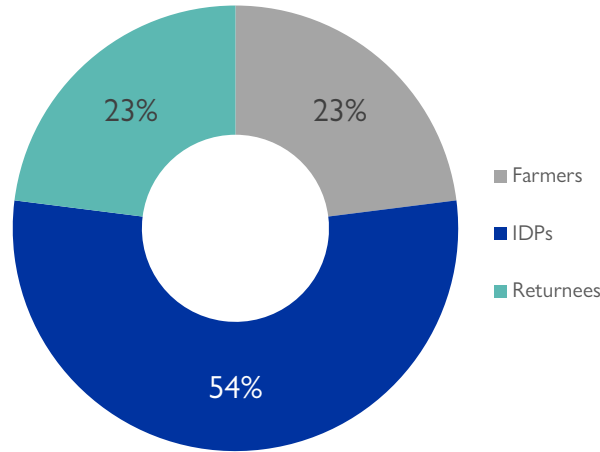
PERCENTAGE OF INDIVIDUALS BY MOVEMENT TRIGGER



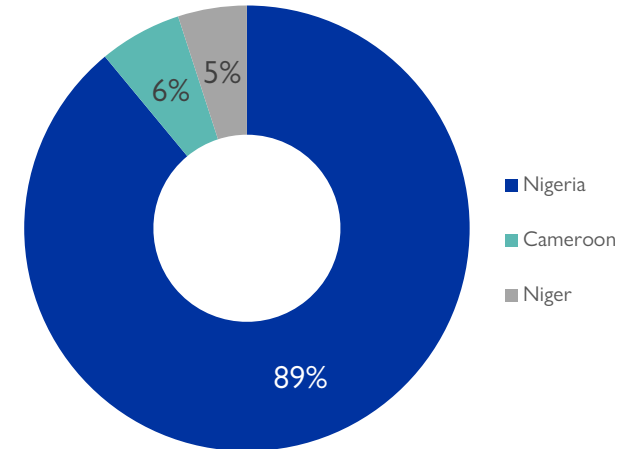
NEEDS EVOLUTION*



ARRIVING POPULATION



COUNTRY OF DEPARTURE OF THE POPULATION



NEW ARRIVALS SCREENING BY NUTRITION PARTNERS



256 MUAC

Green: 162

Yellow: 56

Red: 38

Children (6 – 59 months)
Screened for malnutrition.
Category of screened children.

MALNUTRITION SCREENING SUMMARY OF THE NEW ARRIVALS (CHILDREN 6 – 59 MONTHS)

Between 08 and 14 July 2024, an exhaustive nutrition screening using Mid-Upper Arm Circumference (MUAC) and oedema for acute malnutrition was conducted by sector partners for 256 children aged 6-59 months. Of the 256 children screened, the MUAC reading indicated that 38 were recorded in the red category, 56 in the yellow category and 162 in the green category. No case of oedema was reported in the six LGAs assessed.

Among the 256 children screened, 60 arrived from neighbouring countries (41 in Mobbar LGA and 19 in Bama LGA); of all the 60 children measured; 49 were in green, 10 were in yellow and one in the red category. All children found with acute malnutrition have been admitted to the treatment programme.

LGA	MUAC Categories						Total
	Green ($\geq 12.5\text{cm}$)		Yellow (11.5cm – 12.5cm)		Red ($< 11.5\text{cm}$)		
	Inaccessible	Accessible	Inaccessible	Accessible	Inaccessible	Accessible	
Bama	98	22	38	6	34	0	138
Dikwa	1	0	0	0	0	0	1
Gwoza	4	0	4	0	3	0	11
Kala Balge	0	0	1	0	0	0	1
Mobbar	0	34	0	6	0	1	41
Ngala	3	0	1	0	0	0	1
Total	106	56	44	12	37	1	256

Please note, the data presented above are not surveillance results and should be interpreted with caution.

■ Nourished

■ Moderate Acute Malnutrition (MAM)

■ Severe Acute Malnutrition (SAM)

*Multiple-choice response

DISPLACEMENT BREAKDOWN – only the movements with 12 persons and above are listed below.

State	Arrival location		Movement location			Number of individuals	
	LGA	Ward	State	LGA	Ward		
Adamawa	Demsa	Demsa	Adamawa	Yola South	Ngurore	57	
	Fufore	Beti	Adamawa	Yola South	Adarawo	27	
	Gombi	Tawa	Adamawa	Askira/Uba	Ngohi	116	
				Fufore	Pariya	21	
				Madagali	Wula	22	
				Song	Sigire	23	
	Hong	Hong	Adamawa	Gombi	Gombi South	27	
				Hong	Bangshika	13	
				Yola South	Bole Yolde Pate	35	
				Madagali	Gulak	40	
	Lamurde	Lafiya	Adamawa	Lamurde	Waduku	56	
	Madagali	Madagali	Adamawa	Gwoza	Gwoza Wakane/Bulabulin	17	
				Song	Song Gari	19	
				Bama	Gulumba/Jukkuri/Batra	23	
				Konduga	Kawuri	16	
	Michika	Michika	Adamawa	Gombi	Gombi North	16	
				Michika	Michika I	41	
				Madagali	Gulak	20	
				Maiha	Tambajam	24	
	Mubi North	Mubi North	Adamawa	Garoua	Garoua	27	
				Hong	Hildi	13	
				Nafada	Nafada East	23	
	Mubi South	Lamorde	Borno	Chibok	Chibok Wuntaku	29	
Song	Song Waje	Adamawa	Fufore	Pariya	26		
Yola South	Yola South	Adamawa	Bali	Suntai	12		
			Kaltungo	Kaltungo	16		
Borno	Askira/Uba	Askira/Uba	Adamawa	Askira/Uba	Uba	23	
				Mubi North	Kolere	15	
	Bama	Bama	Borno	Borno	Andara/Ajiri/Wulba	215	
					Dipchari/Jere/Dar-Jamal/Kotembe	80	
					Maiduguri	Gwange	32
					Marwa	Mora	81
	Shehuri/Hausari/Mairi	Shehuri/Hausari/Mairi	Borno	Borno	Gulumba/Jukkuri/Batra	70	
					Lawanti/Malam/Mastari/Abbaram	57	
					Mbuliya/Goniri/Siraja	140	
	Gubio	Gubio I	Borno	Maiduguri	Maisandari	20	
	Gwoza	Gwoza Wakane/Bulabulin	Borno	Gwoza	Guduf Nagadiyo	27	
	Kaga	Benisheikh	Borno	Konduga	Masba/Dalwa West	14	
	Mobbar	Damasak	Niger	Diffa	Diffa	95	
Ngala	Ngala	Borno	Dikwa	Dikwa	17		



GLOBAL DATA INSTITUTE
DISPLACEMENT TRACKING MATRIX

